

LEGEND

- COUNTY LINE
- - - SECTION LINE
- - - - QUARTER SECTION LINE
- - - - - SIXTEENTH SECTION LINE
- POINT OF INTERSECTION
- MONUMENT FOUND
- ⊙ CALCULATED CORNER

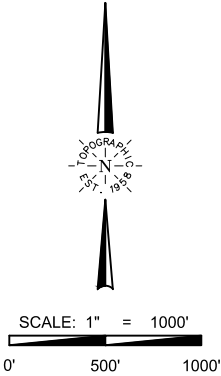
POINT	NAD 83		NAD 27	
SURFACE HOLE LOCATION	N:	1255031.55	N:	255034.41
	E:	3237781.90	E:	2237933.84
	LAT:	N40.0303239	LAT:	N40.0303406
	LONG:	W104.6508539	LONG:	W104.6503335
LANDING POINT LOCATION	N:	1254346.31	N:	254349.19
	E:	3240110.64	E:	2240262.53
	LAT:	N40.0283814	LAT:	N40.0283981
	LONG:	W104.6425619	LONG:	W104.6420419
BOTTOM OF PRODUCTION ZONE	N:	1244675.91	N:	244678.89
	E:	3240228.65	E:	2240380.63
	LAT:	N40.0018324	LAT:	N40.0018490
	LONG:	W104.6424745	LONG:	W104.6419543
BOTTOM HOLE LOCATION	N:	1244585.92	N:	244588.90
	E:	3240229.75	E:	2240381.73
	LAT:	N40.0015854	LAT:	N40.0016019
	LONG:	W104.6424737	LONG:	W104.6419535



TOPOGRAPHIC
LOYALTY INNOVATION LEGACY
520 Stacy Court Ste B, Lafayette, CO 80026
303.666.0379 www.topographic.com

SURVEYOR'S STATEMENT
THE UNDERSIGNED HEREBY STATES THAT THE WELL LOCATION SHOWN HEREON WAS STAKED ON THE GROUND BASED ON EXISTING MONUMENTATION AND/OR PHYSICAL EVIDENCE FOUND IN THE FIELD AND IS CORRECT TO THE BEST OF MY KNOWLEDGE, INFORMATION AND BELIEF.

- NOTES**
- HORIZONTAL (NAD 83) AND VERTICAL (NAVD 88) DATUM IS BASED ON THE TRIMBLE VRS NETWORK. THE LINEAL UNITS OF MEASUREMENT ARE U.S. SURVEY FEET.
 - ALL DIRECTIONS, DISTANCES, AND DIMENSIONS SHOWN HEREON ARE BASED ON COORDINATES FROM THE "COLORADO COORDINATE SYSTEM OF 1983 NORTH ZONE" (TITLE 38, ARTICLE 52 C.R.S.).
 - ALL SECTION LINE DIMENSIONS SHOWN HEREON ARE BASED ON FIELD MEASUREMENTS OF EXISTING MONUMENTS AND/OR PHYSICAL EVIDENCE FOUND IN THE FIELD UNLESS OTHERWISE INDICATED.
 - PHYSICAL FEATURES SHOWN HEREON ARE FOR GRAPHICAL REPRESENTATION ONLY.
 - SEE FORM 2A FOR VISIBLE IMPROVEMENTS WITHIN 500' OF WELLHEAD.
 - DISTANCES TO NEAREST SECTION LINES ARE MEASURED PERPENDICULARLY.
 - THIS IS NOT A LAND SURVEY NOR LAND SURVEY PLAT.
- PDOP READING: 1.5 INSTRUMENT OPERATOR: TAYLOR ONLEY.



VERDAD RESOURCES FAWN 2734 14H			
FIELD	05/05/2021	DRAFT	SW
REV 1	07/25/2022	CHECK	ZAK
SHEET : 1 OF 2		JOB: 141441	

WELL LOCATION MAP

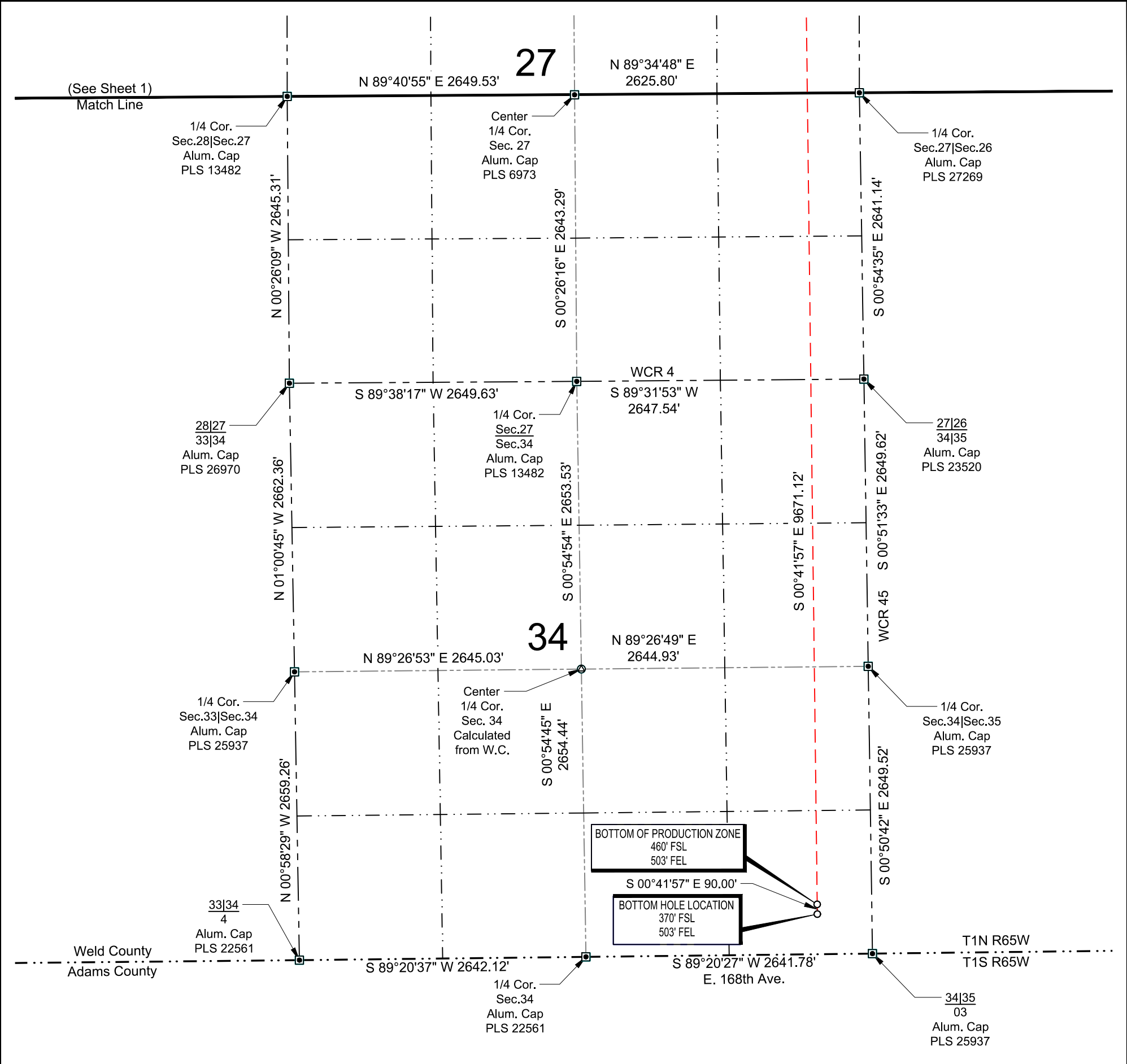
S.H.L. SE/4 SW/4, SECTION 22 T1N R65W 6TH PM

LP NE/4 NE/4, SECTION 27 T1N R65W 6TH PM

BPZ SE/4 SE/4, SECTION 34 T1N R65W 6TH PM

BHL SE/4 SE/4, SECTION 34 T1N R65W 6TH PM

WELD COUNTY, COLORADO



LEGEND

- COUNTY LINE
- - - SECTION LINE
- . - . QUARTER SECTION LINE
- - - - SIXTEENTH SECTION LINE
- POINT OF INTERSECTION
- MONUMENT FOUND
- ⊙ CALCULATED CORNER

POINT	NAD 83		NAD 27	
SURFACE HOLE LOCATION	N:	1255031.55	N:	255034.41
	E:	3237781.90	E:	2237933.84
	LAT:	N40.0303239	LAT:	N40.0303406
	LONG:	W104.6508539	LONG:	W104.6503335
LANDING POINT LOCATION	N:	1254346.31	N:	254349.19
	E:	3240110.64	E:	2240262.53
	LAT:	N40.0283814	LAT:	N40.0283981
	LONG:	W104.6425619	LONG:	W104.6420419
BOTTOM OF PRODUCTION ZONE	N:	1244675.91	N:	244678.89
	E:	3240228.65	E:	2240380.63
	LAT:	N40.0018324	LAT:	N40.0018490
	LONG:	W104.6424745	LONG:	W104.6419543
BOTTOM HOLE LOCATION	N:	1244585.92	N:	244588.90
	E:	3240229.75	E:	2240381.73
	LAT:	N40.0015854	LAT:	N40.0016019
	LONG:	W104.6424737	LONG:	W104.6419535



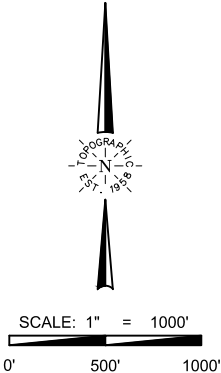
TOPOGRAPHIC

LOYALTY INNOVATION LEGACY

520 Stacy Court Ste B, Lafayette, CO 80026
303.666.0379 www.topographic.com

SURVEYOR'S STATEMENT
THE UNDERSIGNED HEREBY STATES THAT THE WELL LOCATION SHOWN HEREON WAS STAKED ON THE GROUND BASED ON EXISTING MONUMENTATION AND/OR PHYSICAL EVIDENCE FOUND IN THE FIELD AND IS CORRECT TO THE BEST OF MY KNOWLEDGE, INFORMATION AND BELIEF.

- NOTES**
- HORIZONTAL (NAD 83) AND VERTICAL (NAVD 88) DATUM IS BASED ON THE TRIMBLE VRS NETWORK. THE LINEAL UNITS OF MEASUREMENT ARE U.S. SURVEY FEET.
 - ALL DIRECTIONS, DISTANCES, AND DIMENSIONS SHOWN HEREON ARE BASED ON COORDINATES FROM THE "COLORADO COORDINATE SYSTEM OF 1983 NORTH ZONE" (TITLE 38, ARTICLE 52 C.R.S.).
 - ALL SECTION LINE DIMENSIONS SHOWN HEREON ARE BASED ON FIELD MEASUREMENTS OF EXISTING MONUMENTS AND/OR PHYSICAL EVIDENCE FOUND IN THE FIELD UNLESS OTHERWISE INDICATED.
 - PHYSICAL FEATURES SHOWN HEREON ARE FOR GRAPHICAL REPRESENTATION ONLY.
 - SEE FORM 2A FOR VISIBLE IMPROVEMENTS WITHIN 500' OF WELLHEAD.
 - DISTANCES TO NEAREST SECTION LINES ARE MEASURED PERPENDICULARLY.
 - THIS IS NOT A LAND SURVEY NOR LAND SURVEY PLAT.
- PDOP READING: 1.5 INSTRUMENT OPERATOR: TAYLOR ONLEY.



VERDAD RESOURCES FAWN 2734 14H			
FIELD	05/05/2021	DRAFT	SW
REV 1	07/25/2022	CHECK	ZAK
SHEET : 2 OF 2		JOB: 141441	

WELL LOCATION MAP
S.H.L. SE/4 SW/4, SECTION 22 T1N R65W 6TH PM
LP NE/4 NE/4, SECTION 27 T1N R65W 6TH PM
BPZ SE/4 SE/4, SECTION 34 T1N R65W 6TH PM
BHL SE/4 SE/4, SECTION 34 T1N R65W 6TH PM
WELD COUNTY, COLORADO