

Well Header

Surface UWI 0512324076	Business Unit Rockies	Gov Auth Dist	Prod Tree Loc Land
Original RKB (ft) 4,802.00	Orig. KB to Gnd (ft) 10.00	Orig. Spud Date 8/8/2006	Abandon Date

Comment
LIMITED ENTYR. # OF JTS UNKNOWN FOR SURFACE CSG. STAGE TOOLS @ 4110', 4218', 4249', & 4252'. FIELD OPS NOTICE- FLOWLINES ABANDONED PER RULE 1103, RCVD 6/29/17. STATE SHOWS SHUT IN SINCE JAN 2018.

Directions To Well
WCR 72 & 47, SOUTHE 0.1, WEST 0.1 INTO

Congressional Location

Quarter 3 NE	Quarter 4 NE	Section 2	Twnshp 6	Twncshp N/S N	Range 65	Rng E/W D W
-----------------	-----------------	--------------	-------------	------------------	-------------	----------------

Bottom Hole Legal Location

Bottom Hole Legal Location

Plug Back Total Depths

Date	PBD (ftKB)	Method	Com
8/13/2006	7,274	TAG	FLOAT SHOE
8/21/2006	7,250	CASED HOLE LOG	DEPTH LOGGER FROM CBL
3/19/2007	7,245	TAG	CLEAN OUT AND LAND TBG

Wellbore Sections

Section Des	Hole Size (in)	Act Top (ftKB)	Act Btm (ftKB)
SURFACE PRODUCTION	12 1/4 7 7/8	10.0 503.0	503.0 7,300.0

Zone Statuses

Zone Name	Status Date	Status	Fluid Type	Job	Prod Method
NIORBARA	2/6/2007	PR		DRILLING/C	Flowing
NIORBARA	10/11/2011	PR		DRILLING/C	
CODELL	2/6/2007	PR		DRILLING/C	Flowing
CODELL	10/11/2011	PR		DRILLING/C	
CODELL	1/5/2016	PR			Flowing
NIORBARA-4	10/11/2011	PR	Water		

Casing Strings

Surface, Planned?-N, 493ftKB

Csg Des	Run Date	OD (in)	Wt/Len	Grade	Top Dept	Set Dept
Surface	8/9/2006	8 5/8			10	493

Production Casing, Planned?-N, 7290ftKB

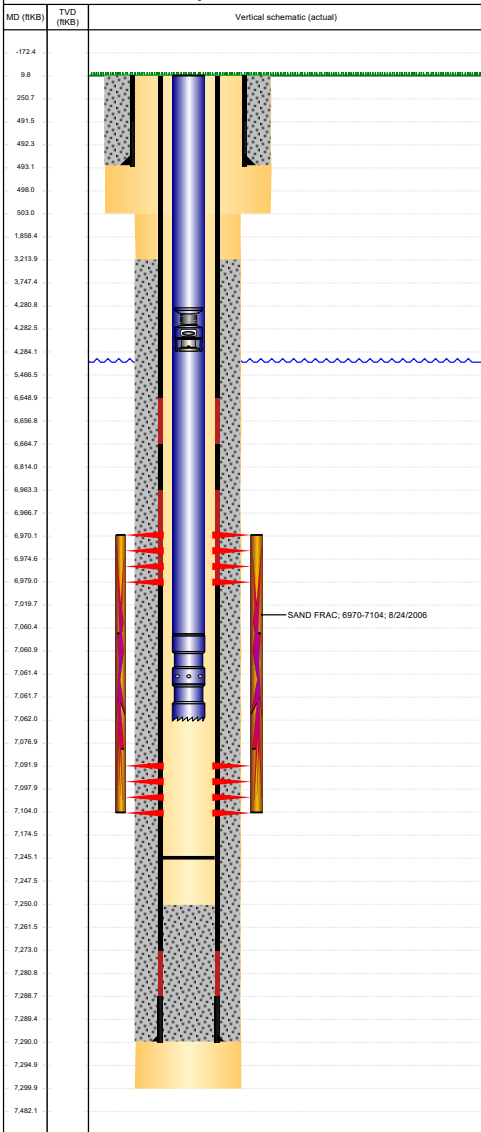
Csg Des	Run Date	OD (in)	Wt/Len	Grade	Top Dept	Set Dept
Production Casing	8/13/2006	4 1/2	11.60	LT&C	10	7290

Cement

Description	Top (ftKB)	Btm (ftKB)
SURFACE CASING CEMENT	10.0	493.0
Description	Top (ftKB)	Btm (ftKB)
PRODUCTION CASING CEMENT	3,214.0	7,290.0

Tubing Strings

Tubing Components



Logs						
Date	Type	Depth Top (MD) (ftKB)	Btm (ftKB)			
8/13/200	INDUCTION	493	7,297.0			
8/21/200	CEMENT BOND	3,100	7,247.0			
12/19/20	GYRO	10	7,050.0			
Perforation Data						
Linked Zone	Explosive Type	Sum of Entered Shot Total	Top (ftKB)	Btm (ftKB)	Date	
NIOBRARA, Original Hole	B	18	6,970.0	6,979.0	8/23/2006	
CODELL, Original Hole		48	7,092.0	7,104.0	8/24/2006	
Total (Sum)		66				
Stimulation Intervals						
Interval	Start Date	Primary Job Type			Zone	
1	8/24/2006	DRILLING/COMPLETION - ORIGINAL			NIOBRARA-CODELL, Or	
Technical Result		Tech Result Details		Tech Result Note		
Comment						
LIMITED ENTRY						