

LEGEND

- COUNTY LINE
- - - SECTION LINE
- - - - QUARTER SECTION LINE
- - - - - SIXTEENTH SECTION LINE
- POINT OF INTERSECTION
- MONUMENT FOUND
- ⊙ CALCULATED CORNER

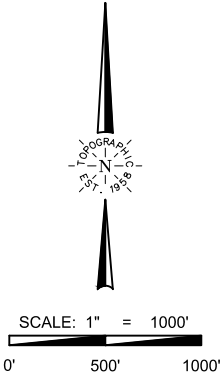
POINT	NAD 83		NAD 27	
SURFACE HOLE LOCATION	N:	1255031.33	N:	255034.19
	E:	3237749.90	E:	2237901.84
	LAT:	N40.0303241	LAT:	N40.0303409
	LONG:	W104.6509682	LONG:	W104.6504477
LANDING POINT LOCATION	N:	1254337.73	N:	254340.60
	E:	3239070.21	E:	2239222.13
	LAT:	N40.0283853	LAT:	N40.0284021
	LONG:	W104.6462774	LONG:	W104.6457571
BOTTOM OF PRODUCTION ZONE	N:	1244663.92	N:	244666.89
	E:	3239185.99	E:	2239337.99
	LAT:	N40.0018271	LAT:	N40.0018437
	LONG:	W104.6461966	LONG:	W104.6456762
BOTTOM HOLE LOCATION	N:	1244573.92	N:	244576.90
	E:	3239187.07	E:	2239339.07
	LAT:	N40.0015801	LAT:	N40.0015966
	LONG:	W104.6461958	LONG:	W104.6456755



**TOPOGRAPHIC**  
LOYALTY INNOVATION LEGACY  
520 Stacy Court Ste B, Lafayette, CO 80026  
303.666.0379 www.topographic.com

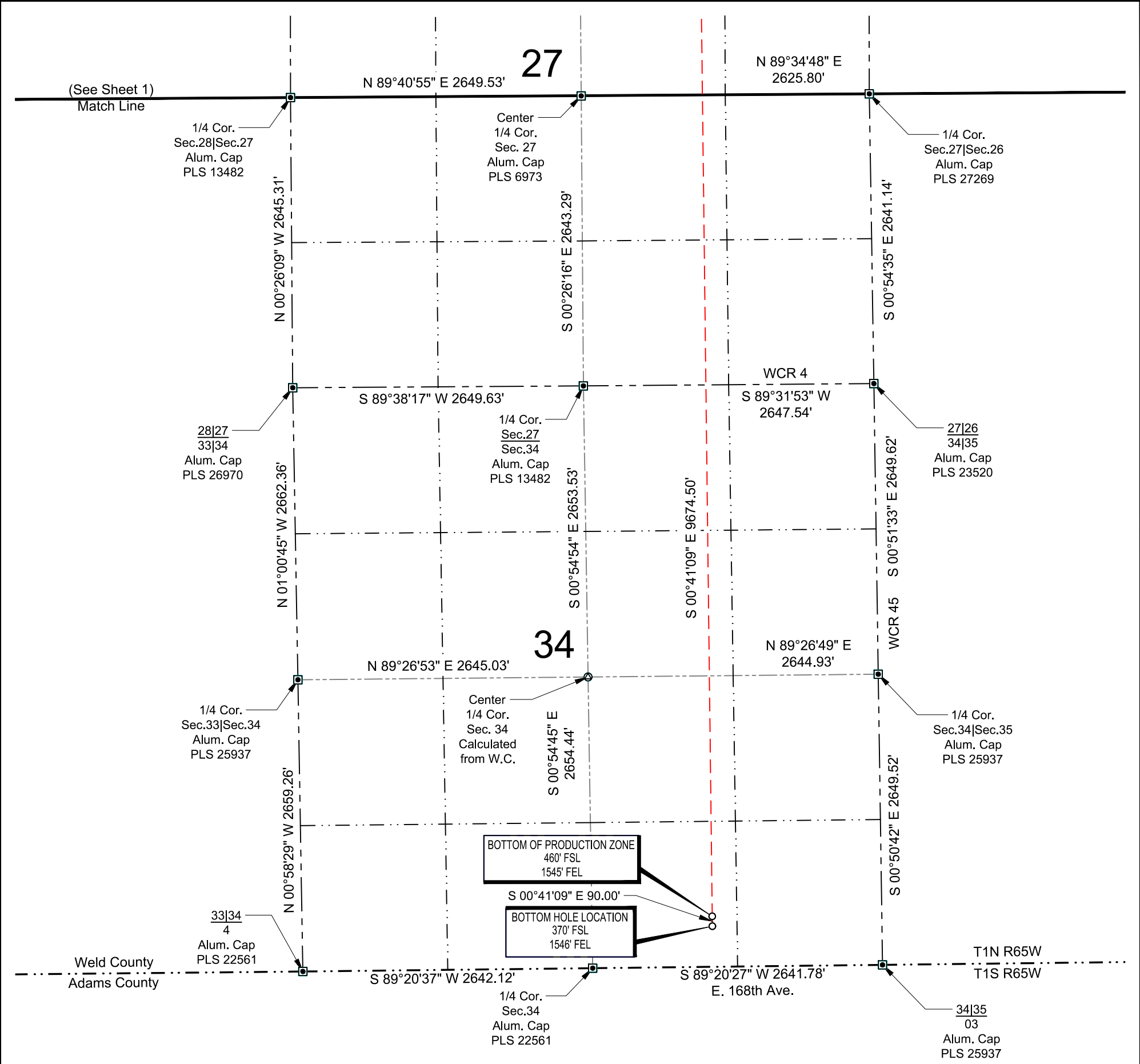
**SURVEYOR'S STATEMENT**  
THE UNDERSIGNED HEREBY STATES THAT THE WELL LOCATION SHOWN HEREON WAS STAKED ON THE GROUND BASED ON EXISTING MONUMENTATION AND/OR PHYSICAL EVIDENCE FOUND IN THE FIELD AND IS CORRECT TO THE BEST OF MY KNOWLEDGE, INFORMATION AND BELIEF.

- NOTES**
- HORIZONTAL (NAD 83) AND VERTICAL (NAVD 88) DATUM IS BASED ON THE TRIMBLE VRS NETWORK. THE LINEAL UNITS OF MEASUREMENT ARE U.S. SURVEY FEET.
  - ALL DIRECTIONS, DISTANCES, AND DIMENSIONS SHOWN HEREON ARE BASED ON COORDINATES FROM THE "COLORADO COORDINATE SYSTEM OF 1983 NORTH ZONE" (TITLE 38, ARTICLE 52 C.R.S.).
  - ALL SECTION LINE DIMENSIONS SHOWN HEREON ARE BASED ON FIELD MEASUREMENTS OF EXISTING MONUMENTS AND/OR PHYSICAL EVIDENCE FOUND IN THE FIELD UNLESS OTHERWISE INDICATED.
  - PHYSICAL FEATURES SHOWN HEREON ARE FOR GRAPHICAL REPRESENTATION ONLY.
  - SEE FORM 2A FOR VISIBLE IMPROVEMENTS WITHIN 500' OF WELLHEAD.
  - DISTANCES TO NEAREST SECTION LINES ARE MEASURED PERPENDICULARLY.
  - THIS IS NOT A LAND SURVEY NOR LAND SURVEY PLAT.
- PDOP READING: 1.5 INSTRUMENT OPERATOR: TAYLOR ONLEY.



VERDAD RESOURCES FAWN 2734 12H			
FIELD	05/05/2021	DRAFT	SW
REV 1	07/25/2022	CHECK	ZAK
SHEET : 1 OF 2		JOB: 141441	

**WELL LOCATION MAP**  
S.H.L. SE/4 SW/4, SECTION 22 T1N R65W 6TH PM  
LP NW/4 NE/4, SECTION 27 T1N R65W 6TH PM  
BPZ SW/4 SE/4, SECTION 34 T1N R65W 6TH PM  
BHL SW/4 SE/4, SECTION 34 T1N R65W 6TH PM  
WELD COUNTY, COLORADO



LEGEND

- COUNTY LINE
- - - SECTION LINE
- - - - QUARTER SECTION LINE
- - - - - SIXTEENTH SECTION LINE
- POINT OF INTERSECTION
- MONUMENT FOUND
- ⊙ CALCULATED CORNER

POINT	NAD 83		NAD 27	
SURFACE HOLE LOCATION	N:	1255031.33	N:	255034.19
	E:	3237749.90	E:	2237901.84
	LAT:	N40.0303241	LAT:	N40.0303409
	LONG:	W104.6509682	LONG:	W104.6504477
LANDING POINT LOCATION	N:	1254337.73	N:	254340.60
	E:	3239070.21	E:	2239222.13
	LAT:	N40.0283853	LAT:	N40.0284021
	LONG:	W104.6462774	LONG:	W104.6457571
BOTTOM OF PRODUCTION ZONE	N:	1244663.92	N:	244666.89
	E:	3239185.99	E:	2239337.99
	LAT:	N40.0018271	LAT:	N40.0018437
	LONG:	W104.6461966	LONG:	W104.6456762
BOTTOM HOLE LOCATION	N:	1244573.92	N:	244576.90
	E:	3239187.07	E:	2239339.07
	LAT:	N40.0015801	LAT:	N40.0015966
	LONG:	W104.6461958	LONG:	W104.6456755




TOPOGRAPHIC

LOYALTY INNOVATION LEGACY

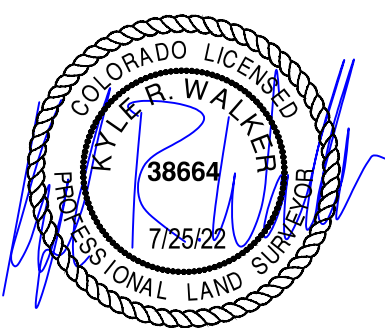
520 Stacy Court Ste B, Lafayette, CO 80026  
303.666.0379 www.topographic.com

**SURVEYOR'S STATEMENT**  
THE UNDERSIGNED HEREBY STATES THAT THE WELL LOCATION SHOWN HEREON WAS STAKED ON THE GROUND BASED ON EXISTING MONUMENTATION AND/OR PHYSICAL EVIDENCE FOUND IN THE FIELD AND IS CORRECT TO THE BEST OF MY KNOWLEDGE, INFORMATION AND BELIEF.

- NOTES**
- HORIZONTAL (NAD 83) AND VERTICAL (NAVD 88) DATUM IS BASED ON THE TRIMBLE VRS NETWORK. THE LINEAL UNITS OF MEASUREMENT ARE U.S. SURVEY FEET.
  - ALL DIRECTIONS, DISTANCES, AND DIMENSIONS SHOWN HEREON ARE BASED ON COORDINATES FROM THE "COLORADO COORDINATE SYSTEM OF 1983 NORTH ZONE" (TITLE 38, ARTICLE 52 C.R.S.).
  - ALL SECTION LINE DIMENSIONS SHOWN HEREON ARE BASED ON FIELD MEASUREMENTS OF EXISTING MONUMENTS AND/OR PHYSICAL EVIDENCE FOUND IN THE FIELD UNLESS OTHERWISE INDICATED.
  - PHYSICAL FEATURES SHOWN HEREON ARE FOR GRAPHICAL REPRESENTATION ONLY.
  - SEE FORM 2A FOR VISIBLE IMPROVEMENTS WITHIN 500' OF WELLHEAD.
  - DISTANCES TO NEAREST SECTION LINES ARE MEASURED PERPENDICULARLY.
  - THIS IS NOT A LAND SURVEY NOR LAND SURVEY PLAT.
- PDOP READING: 1.5 INSTRUMENT OPERATOR: TAYLOR ONLEY.



SCALE: 1" = 1000'  
0' 500' 1000'



VERDAD RESOURCES FAWN 2734 12H			
FIELD	05/05/2021	DRAFT	SW
REV 1	07/25/2022	CHECK	ZAK
SHEET : 2 OF 2		JOB: 141441	

**WELL LOCATION MAP**  
S.H.L. SE/4 SW/4, SECTION 22 T1N R65W 6TH PM  
LP NW/4 NE/4, SECTION 27 T1N R65W 6TH PM  
BPZ SW/4 SE/4, SECTION 34 T1N R65W 6TH PM  
BHL SW/4 SE/4, SECTION 34 T1N R65W 6TH PM  
WELD COUNTY, COLORADO