

# **VERDAD RESOURCES**

**WATTENBERG FIELD**

**1N-65W-22 FAWN 2734 & 2833 PAD**

**FAWN 2734-10H**

**Plan A**

**Plan: Design #1**

## **Standard Planning Report**

**30 July, 2022**

# VERDAD RESOURCES

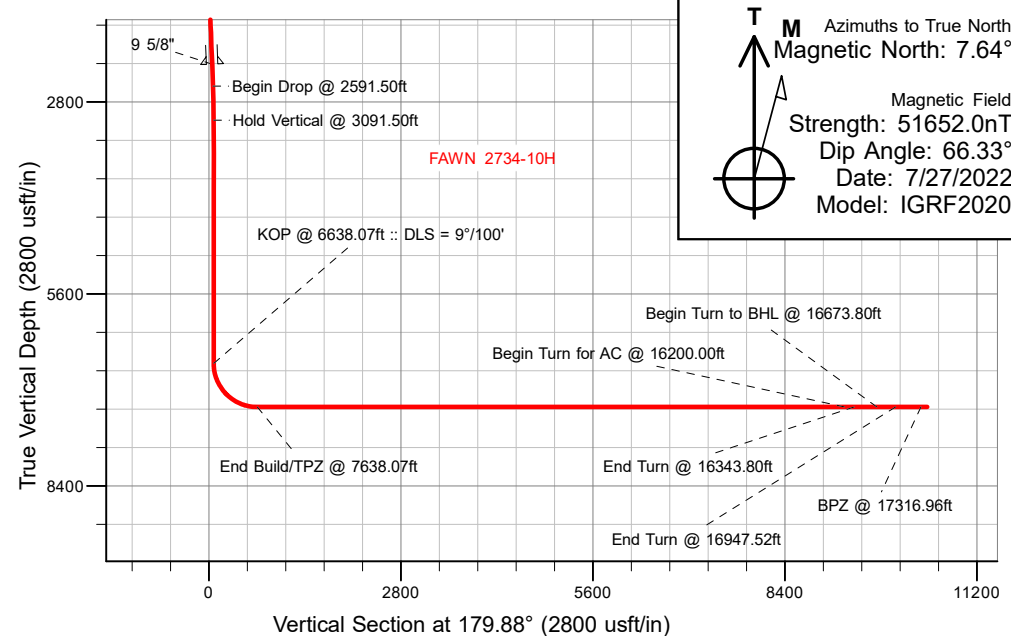
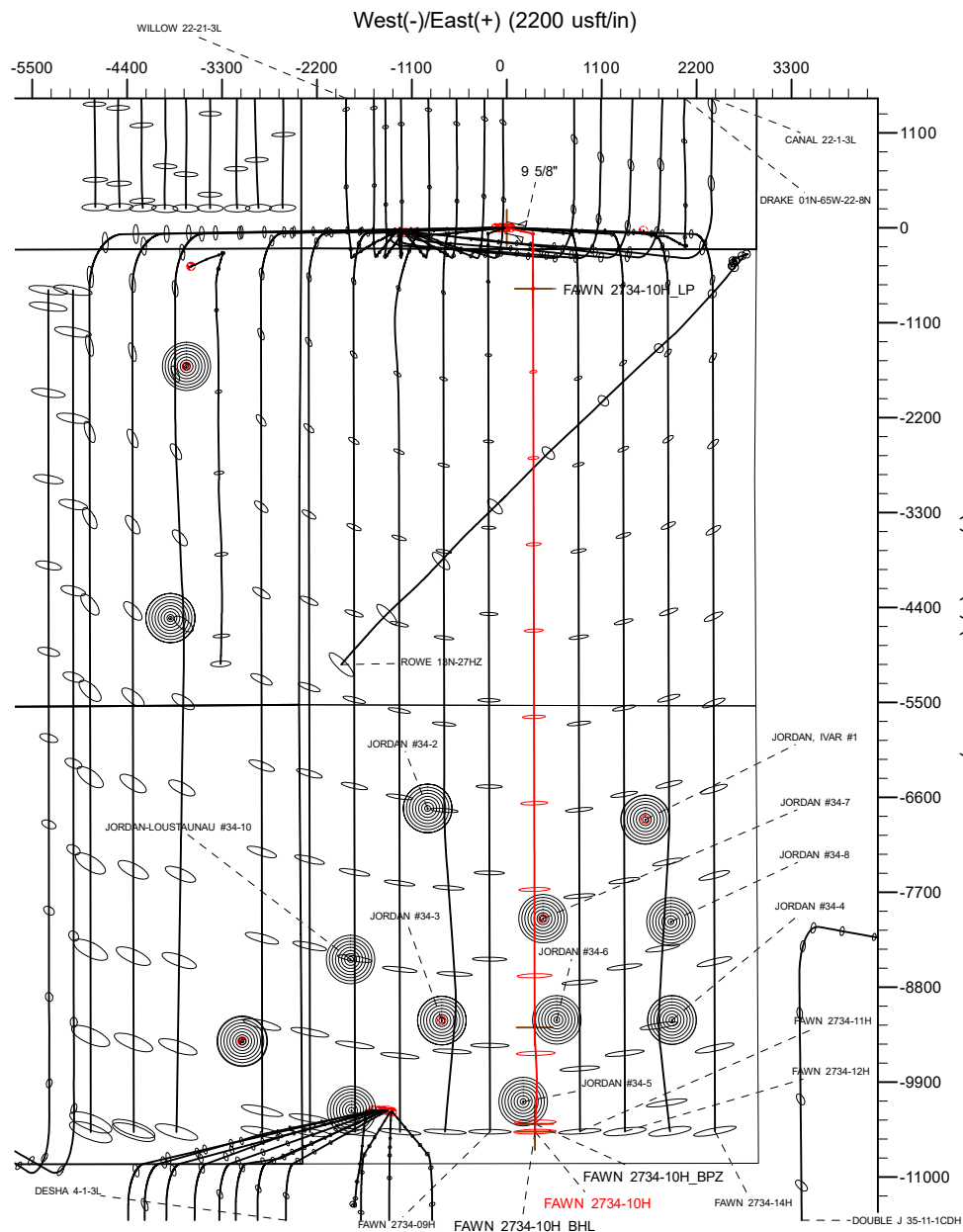
CASING DETAILS			
TVD	MD	Name	Size
2250.00	2267.23	9 5/8"	9-5/8

## SECTION DETAILS

MD	Inc	Azi	TVD	+N/-S	+E/-W	Dleg	TFace	VSect	Target
0.00	0.00	0.00	0.00	0.00	0.00	0.00	0.00	0.00	
800.00	0.00	0.00	800.00	0.00	0.00	0.00	0.00	0.00	
1300.00	10.00	102.67	1297.47	-9.55	42.46	2.00	102.67	9.63	
2591.50	10.00	102.67	2569.34	-58.74	261.27	0.00	0.00	59.28	
3091.50	0.00	0.00	3066.81	-68.28	303.73	2.00	180.00	68.92	
6638.07	0.00	0.00	6613.38	-68.28	303.73	0.00	0.00	68.92	
7638.07	90.00	179.88	7250.00	-704.90	305.11	9.00	179.88	705.54	
16200.00	90.00	179.88	7250.00	-9266.81	323.64	0.00	0.00	9267.47	FAWN 2734-10H_Tg
16343.80	90.00	177.00	7250.00	-9410.54	327.56	2.00	-90.00	9411.21	
16673.80	90.00	177.00	7250.00	-9740.09	344.83	0.00	0.00	9740.79	
16947.52	90.00	182.47	7250.00	-10013.70	346.09	2.00	90.00	10014.40	
17407.04	90.00	182.47	7250.00	-10472.79	326.25	0.00	0.00	10473.45	FAWN 2734-10H_BHL

WELLBORE TARGET DETAILS (LAT/LONG)

Name	TVD	Northing	Easting	Latitude	Longitude
FAWN 2734-10H_SHL	0.00	1255031.12	3237717.90	40.030324	-104.651083
FAWN 2734-10H_LP/TPZ	7250.00	1254329.14	3238029.78	40.028389	-104.649993
FAWN 2734-10H_BPZ	7250.00	1244651.92	3238143.34	40.001822	-104.649919
FAWN 2734-10H_BHL	7250.00	1244561.93	3238144.39	40.001575	-104.649918



WELL DETAILS: FAWN 2734-10H

GL = 5107'

RKB = 20' @ 5127.00usft (RIG)

Plan: Design #1 (FAWN 2734-10H/Plan A)

Date: 7/30/2022

## Planning Report

<b>Database:</b>	EDM 5000.16 Single User Db	<b>Local Co-ordinate Reference:</b>	Well FAWN 2734-10H
<b>Company:</b>	VERDAD RESOURCES	<b>TVD Reference:</b>	RKB = 20' @ 5127.00usft (RIG)
<b>Project:</b>	WATTENBERG FIELD	<b>MD Reference:</b>	RKB = 20' @ 5127.00usft (RIG)
<b>Site:</b>	1N-65W-22 FAWN 2734 & 2833 PAD	<b>North Reference:</b>	True
<b>Well:</b>	FAWN 2734-10H	<b>Survey Calculation Method:</b>	Minimum Curvature
<b>Wellbore:</b>	Plan A		
<b>Design:</b>	Design #1		

<b>Project</b>	WATTENBERG FIELD		
<b>Map System:</b>	US State Plane 1983	<b>System Datum:</b>	Mean Sea Level
<b>Geo Datum:</b>	North American Datum 1983		
<b>Map Zone:</b>	Colorado Northern Zone		

Site		1N-65W-22 FAWN 2734 & 2833 PAD				
Site Position:		Northing:	1,255,173.64	usft	Latitude:	40.030719
From:	Lat/Long	Easting:	3,237,589.54	usft	Longitude:	-104.651536
Position Uncertainty:		0.00	usft	Slot Radius:	13-3/16	"

Well		FAWN 2734-10H				
Well Position	+N/-S	0.00 usft	Northing:	1,255,031.12 usft	Latitude:	40.030324
	+E/-W	0.00 usft	Easting:	3,237,717.90 usft	Longitude:	-104.651083
Position Uncertainty		3.28 usft	Wellhead Elevation:	usft	Ground Level:	5,107.00 usft
Grid Convergence:		0.55 °				

<b>Wellbore</b>	Plan A				
<b>Magnetics</b>	<b>Model Name</b>	<b>Sample Date</b>	<b>Declination (°)</b>	<b>Dip Angle (°)</b>	<b>Field Strength (nT)</b>
	IGRF202013	7/27/2022	7.64	66.33	51,651.95688754

<b>Design</b>	Design #1				
<b>Audit Notes:</b>					
<b>Version:</b>		<b>Phase:</b>	PLAN	<b>Tie On Depth:</b>	0.00
<b>Vertical Section:</b>	<b>Depth From (TVD) (usft)</b>	<b>+N/-S (usft)</b>	<b>+E/-W (usft)</b>	<b>Direction (°)</b>	
	0.00	0.00	0.00	179.88	

<b>Plan Survey Tool Program</b>		<b>Date</b>	7/30/2022		
<b>Depth From (usft)</b>	<b>Depth To (usft)</b>	<b>Survey (Wellbore)</b>	<b>Tool Name</b>	<b>Remarks</b>	
1	0.00	2,250.00	Design #1 (Plan A)	ISCWSA MWD	
				Fixed:v2:standard declination	
2	2,250.00	17,406.91	Design #1 (Plan A)	ISCWSA MWD	
				Fixed:v2:standard declination	

## Planning Report

<b>Database:</b>	EDM 5000.16 Single User Db	<b>Local Co-ordinate Reference:</b>	Well FAWN 2734-10H
<b>Company:</b>	VERDAD RESOURCES	<b>TVD Reference:</b>	RKB = 20' @ 5127.00usft (RIG)
<b>Project:</b>	WATTENBERG FIELD	<b>MD Reference:</b>	RKB = 20' @ 5127.00usft (RIG)
<b>Site:</b>	1N-65W-22 FAWN 2734 & 2833 PAD	<b>North Reference:</b>	True
<b>Well:</b>	FAWN 2734-10H	<b>Survey Calculation Method:</b>	Minimum Curvature
<b>Wellbore:</b>	Plan A		
<b>Design:</b>	Design #1		

Plan Sections										
Measured Depth (usft)	Inclination (°)	Azimuth (°)	Vertical Depth (usft)	+N/-S (usft)	+E/-W (usft)	Dogleg Rate (°/100usft)	Build Rate (°/100usft)	Turn Rate (°/100usft)	TFO (°)	Target
0.00	0.00	0.00	0.00	0.00	0.00	0.00	0.00	0.00	0.00	
800.00	0.00	0.00	800.00	0.00	0.00	0.00	0.00	0.00	0.00	
1,300.00	10.00	102.67	1,297.47	-9.55	42.46	2.00	2.00	0.00	102.67	
2,591.50	10.00	102.67	2,569.34	-58.74	261.27	0.00	0.00	0.00	0.00	
3,091.50	0.00	0.00	3,066.81	-68.28	303.73	2.00	-2.00	0.00	180.00	
6,638.07	0.00	0.00	6,613.38	-68.28	303.73	0.00	0.00	0.00	0.00	
7,638.07	90.00	179.88	7,250.00	-704.90	305.11	9.00	9.00	17.99	179.88	
16,200.00	90.00	179.88	7,250.00	-9,266.81	323.64	0.00	0.00	0.00	0.00	FAWN 2734-10H_Tgt
16,343.80	90.00	177.00	7,250.00	-9,410.54	327.56	2.00	0.00	-2.00	-90.00	
16,673.80	90.00	177.00	7,250.00	-9,740.09	344.83	0.00	0.00	0.00	0.00	
16,947.52	90.00	182.47	7,250.00	-10,013.70	346.09	2.00	0.00	2.00	90.00	
17,407.04	90.00	182.47	7,250.00	-10,472.79	326.25	0.00	0.00	0.00	0.00	FAWN 2734-10H_BHI

# Planning Report

<b>Database:</b>	EDM 5000.16 Single User Db	<b>Local Co-ordinate Reference:</b>	Well FAWN 2734-10H
<b>Company:</b>	VERDAD RESOURCES	<b>TVD Reference:</b>	RKB = 20' @ 5127.00usft (RIG)
<b>Project:</b>	WATTENBERG FIELD	<b>MD Reference:</b>	RKB = 20' @ 5127.00usft (RIG)
<b>Site:</b>	1N-65W-22 FAWN 2734 & 2833 PAD	<b>North Reference:</b>	True
<b>Well:</b>	FAWN 2734-10H	<b>Survey Calculation Method:</b>	Minimum Curvature
<b>Wellbore:</b>	Plan A		
<b>Design:</b>	Design #1		

Planned Survey									
Measured Depth (usft)	Inclination (°)	Azimuth (°)	Vertical Depth (usft)	+N/-S (usft)	+E/-W (usft)	Vertical Section (usft)	Dogleg Rate (°/100usft)	Build Rate (°/100usft)	Turn Rate (°/100usft)
0.00	0.00	0.00	0.00	0.00	0.00	0.00	0.00	0.00	0.00
100.00	0.00	0.00	100.00	0.00	0.00	0.00	0.00	0.00	0.00
200.00	0.00	0.00	200.00	0.00	0.00	0.00	0.00	0.00	0.00
300.00	0.00	0.00	300.00	0.00	0.00	0.00	0.00	0.00	0.00
400.00	0.00	0.00	400.00	0.00	0.00	0.00	0.00	0.00	0.00
500.00	0.00	0.00	500.00	0.00	0.00	0.00	0.00	0.00	0.00
600.00	0.00	0.00	600.00	0.00	0.00	0.00	0.00	0.00	0.00
700.00	0.00	0.00	700.00	0.00	0.00	0.00	0.00	0.00	0.00
800.00	0.00	0.00	800.00	0.00	0.00	0.00	0.00	0.00	0.00
Begin Nudge @ 800.00ft									
900.00	2.00	102.67	899.98	-0.38	1.70	0.39	2.00	2.00	0.00
1,000.00	4.00	102.67	999.84	-1.53	6.81	1.54	2.00	2.00	0.00
1,100.00	6.00	102.67	1,099.45	-3.44	15.31	3.47	2.00	2.00	0.00
1,200.00	8.00	102.67	1,198.70	-6.12	27.20	6.17	2.00	2.00	0.00
1,300.00	10.00	102.67	1,297.47	-9.55	42.46	9.63	2.00	2.00	0.00
Hold Tangent @ 1300.00ft									
1,400.00	10.00	102.67	1,395.95	-13.35	59.40	13.48	0.00	0.00	0.00
1,500.00	10.00	102.67	1,494.43	-17.16	76.35	17.32	0.00	0.00	0.00
1,600.00	10.00	102.67	1,592.91	-20.97	93.29	21.17	0.00	0.00	0.00
1,700.00	10.00	102.67	1,691.39	-24.78	110.23	25.01	0.00	0.00	0.00
1,800.00	10.00	102.67	1,789.87	-28.59	127.17	28.86	0.00	0.00	0.00
1,900.00	10.00	102.67	1,888.35	-32.40	144.11	32.70	0.00	0.00	0.00
2,000.00	10.00	102.67	1,986.83	-36.21	161.06	36.54	0.00	0.00	0.00
2,100.00	10.00	102.67	2,085.31	-40.02	178.00	40.39	0.00	0.00	0.00
2,200.00	10.00	102.67	2,183.79	-43.82	194.94	44.23	0.00	0.00	0.00
2,267.23	10.00	102.67	2,250.00	-46.39	206.33	46.82	0.00	0.00	0.00
9 5/8"									
2,300.00	10.00	102.67	2,282.27	-47.63	211.88	48.08	0.00	0.00	0.00
2,400.00	10.00	102.67	2,380.75	-51.44	228.82	51.92	0.00	0.00	0.00
2,500.00	10.00	102.67	2,479.23	-55.25	245.77	55.77	0.00	0.00	0.00
2,591.50	10.00	102.67	2,569.34	-58.74	261.27	59.28	0.00	0.00	0.00
Begin Drop @ 2591.50ft									
2,600.00	9.83	102.67	2,577.72	-59.06	262.70	59.61	2.00	-2.00	0.00
2,700.00	7.83	102.67	2,676.53	-62.42	277.67	63.00	2.00	-2.00	0.00
2,800.00	5.83	102.67	2,775.81	-65.03	289.27	65.64	2.00	-2.00	0.00
2,900.00	3.83	102.67	2,875.45	-66.88	297.49	67.50	2.00	-2.00	0.00
3,000.00	1.83	102.67	2,975.33	-67.96	302.31	68.59	2.00	-2.00	0.00
3,091.50	0.00	0.00	3,066.81	-68.28	303.73	68.92	2.00	-2.00	0.00
Hold Vertical @ 3091.50ft									
3,100.00	0.00	0.00	3,075.31	-68.28	303.73	68.92	0.00	0.00	0.00
3,200.00	0.00	0.00	3,175.31	-68.28	303.73	68.92	0.00	0.00	0.00
3,300.00	0.00	0.00	3,275.31	-68.28	303.73	68.92	0.00	0.00	0.00
3,400.00	0.00	0.00	3,375.31	-68.28	303.73	68.92	0.00	0.00	0.00
3,500.00	0.00	0.00	3,475.31	-68.28	303.73	68.92	0.00	0.00	0.00
3,600.00	0.00	0.00	3,575.31	-68.28	303.73	68.92	0.00	0.00	0.00
3,700.00	0.00	0.00	3,675.31	-68.28	303.73	68.92	0.00	0.00	0.00
3,800.00	0.00	0.00	3,775.31	-68.28	303.73	68.92	0.00	0.00	0.00
3,900.00	0.00	0.00	3,875.31	-68.28	303.73	68.92	0.00	0.00	0.00
4,000.00	0.00	0.00	3,975.31	-68.28	303.73	68.92	0.00	0.00	0.00
4,100.00	0.00	0.00	4,075.31	-68.28	303.73	68.92	0.00	0.00	0.00
4,200.00	0.00	0.00	4,175.31	-68.28	303.73	68.92	0.00	0.00	0.00
4,300.00	0.00	0.00	4,275.31	-68.28	303.73	68.92	0.00	0.00	0.00
4,400.00	0.00	0.00	4,375.31	-68.28	303.73	68.92	0.00	0.00	0.00
4,500.00	0.00	0.00	4,475.31	-68.28	303.73	68.92	0.00	0.00	0.00

## Planning Report

<b>Database:</b>	EDM 5000.16 Single User Db	<b>Local Co-ordinate Reference:</b>	Well FAWN 2734-10H
<b>Company:</b>	VERDAD RESOURCES	<b>TVD Reference:</b>	RKB = 20' @ 5127.00usft (RIG)
<b>Project:</b>	WATTENBERG FIELD	<b>MD Reference:</b>	RKB = 20' @ 5127.00usft (RIG)
<b>Site:</b>	1N-65W-22 FAWN 2734 & 2833 PAD	<b>North Reference:</b>	True
<b>Well:</b>	FAWN 2734-10H	<b>Survey Calculation Method:</b>	Minimum Curvature
<b>Wellbore:</b>	Plan A		
<b>Design:</b>	Design #1		

Planned Survey									
Measured Depth (usft)	Inclination (°)	Azimuth (°)	Vertical Depth (usft)	+N/-S (usft)	+E/-W (usft)	Vertical Section (usft)	Dogleg Rate (°/100usft)	Build Rate (°/100usft)	Turn Rate (°/100usft)
4,600.00	0.00	0.00	4,575.31	-68.28	303.73	68.92	0.00	0.00	0.00
4,700.00	0.00	0.00	4,675.31	-68.28	303.73	68.92	0.00	0.00	0.00
4,800.00	0.00	0.00	4,775.31	-68.28	303.73	68.92	0.00	0.00	0.00
4,900.00	0.00	0.00	4,875.31	-68.28	303.73	68.92	0.00	0.00	0.00
5,000.00	0.00	0.00	4,975.31	-68.28	303.73	68.92	0.00	0.00	0.00
5,100.00	0.00	0.00	5,075.31	-68.28	303.73	68.92	0.00	0.00	0.00
5,200.00	0.00	0.00	5,175.31	-68.28	303.73	68.92	0.00	0.00	0.00
5,300.00	0.00	0.00	5,275.31	-68.28	303.73	68.92	0.00	0.00	0.00
5,400.00	0.00	0.00	5,375.31	-68.28	303.73	68.92	0.00	0.00	0.00
5,500.00	0.00	0.00	5,475.31	-68.28	303.73	68.92	0.00	0.00	0.00
5,600.00	0.00	0.00	5,575.31	-68.28	303.73	68.92	0.00	0.00	0.00
5,700.00	0.00	0.00	5,675.31	-68.28	303.73	68.92	0.00	0.00	0.00
5,800.00	0.00	0.00	5,775.31	-68.28	303.73	68.92	0.00	0.00	0.00
5,900.00	0.00	0.00	5,875.31	-68.28	303.73	68.92	0.00	0.00	0.00
6,000.00	0.00	0.00	5,975.31	-68.28	303.73	68.92	0.00	0.00	0.00
6,100.00	0.00	0.00	6,075.31	-68.28	303.73	68.92	0.00	0.00	0.00
6,200.00	0.00	0.00	6,175.31	-68.28	303.73	68.92	0.00	0.00	0.00
6,300.00	0.00	0.00	6,275.31	-68.28	303.73	68.92	0.00	0.00	0.00
6,400.00	0.00	0.00	6,375.31	-68.28	303.73	68.92	0.00	0.00	0.00
6,500.00	0.00	0.00	6,475.31	-68.28	303.73	68.92	0.00	0.00	0.00
6,600.00	0.00	0.00	6,575.31	-68.28	303.73	68.92	0.00	0.00	0.00
6,638.07	0.00	0.00	6,613.38	-68.28	303.73	68.92	0.00	0.00	0.00
<b>KOP @ 6638.07ft :: DLS = 9°/100'</b>									
6,650.00	1.07	179.88	6,625.31	-68.39	303.73	69.03	9.00	9.00	0.00
6,700.00	5.57	179.88	6,675.21	-71.29	303.74	71.93	9.00	9.00	0.00
6,750.00	10.07	179.88	6,724.73	-78.10	303.75	78.73	9.00	9.00	0.00
6,800.00	14.57	179.88	6,773.57	-88.77	303.78	89.40	9.00	9.00	0.00
6,850.00	19.07	179.88	6,821.42	-103.23	303.81	103.87	9.00	9.00	0.00
6,900.00	23.57	179.88	6,867.98	-121.41	303.85	122.05	9.00	9.00	0.00
6,950.00	28.07	179.88	6,912.98	-143.18	303.89	143.82	9.00	9.00	0.00
7,000.00	32.57	179.88	6,956.13	-168.42	303.95	169.06	9.00	9.00	0.00
7,050.00	37.07	179.88	6,997.16	-196.97	304.01	197.60	9.00	9.00	0.00
7,100.00	41.57	179.88	7,035.83	-228.64	304.08	229.28	9.00	9.00	0.00
7,150.00	46.07	179.88	7,071.89	-263.26	304.15	263.89	9.00	9.00	0.00
7,200.00	50.57	179.88	7,105.13	-300.59	304.23	301.23	9.00	9.00	0.00
7,250.00	55.07	179.88	7,135.34	-340.42	304.32	341.06	9.00	9.00	0.00
7,300.00	59.57	179.88	7,162.33	-382.50	304.41	383.13	9.00	9.00	0.00
7,350.00	64.07	179.88	7,185.93	-426.56	304.51	427.20	9.00	9.00	0.00
7,400.00	68.57	179.88	7,206.00	-472.34	304.61	472.98	9.00	9.00	0.00
7,450.00	73.07	179.88	7,222.42	-519.55	304.71	520.19	9.00	9.00	0.00
7,500.00	77.57	179.88	7,235.09	-567.91	304.81	568.55	9.00	9.00	0.00
7,550.00	82.07	179.88	7,243.92	-617.11	304.92	617.75	9.00	9.00	0.00
7,600.00	86.57	179.88	7,248.86	-666.85	305.03	667.49	9.00	9.00	0.00
7,638.07	90.00	179.88	7,250.00	-704.90	305.11	705.54	9.00	9.00	0.00
<b>End Build/TPZ @ 7638.07ft</b>									
7,700.00	90.00	179.88	7,250.00	-766.83	305.24	767.47	0.00	0.00	0.00
7,800.00	90.00	179.88	7,250.00	-866.83	305.46	867.47	0.00	0.00	0.00
7,900.00	90.00	179.88	7,250.00	-966.83	305.68	967.47	0.00	0.00	0.00
8,000.00	90.00	179.88	7,250.00	-1,066.83	305.89	1,067.47	0.00	0.00	0.00
8,100.00	90.00	179.88	7,250.00	-1,166.83	306.11	1,167.47	0.00	0.00	0.00
8,200.00	90.00	179.88	7,250.00	-1,266.83	306.33	1,267.47	0.00	0.00	0.00
8,300.00	90.00	179.88	7,250.00	-1,366.83	306.54	1,367.47	0.00	0.00	0.00
8,400.00	90.00	179.88	7,250.00	-1,466.83	306.76	1,467.47	0.00	0.00	0.00

## Planning Report

<b>Database:</b>	EDM 5000.16 Single User Db	<b>Local Co-ordinate Reference:</b>	Well FAWN 2734-10H
<b>Company:</b>	VERDAD RESOURCES	<b>TVD Reference:</b>	RKB = 20' @ 5127.00usft (RIG)
<b>Project:</b>	WATTENBERG FIELD	<b>MD Reference:</b>	RKB = 20' @ 5127.00usft (RIG)
<b>Site:</b>	1N-65W-22 FAWN 2734 & 2833 PAD	<b>North Reference:</b>	True
<b>Well:</b>	FAWN 2734-10H	<b>Survey Calculation Method:</b>	Minimum Curvature
<b>Wellbore:</b>	Plan A		
<b>Design:</b>	Design #1		

Planned Survey										
Measured Depth (usft)	Inclination (°)	Azimuth (°)	Vertical Depth (usft)	+N/-S (usft)	+E/-W (usft)	Vertical Section (usft)	Dogleg Rate (°/100usft)	Build Rate (°/100usft)	Turn Rate (°/100usft)	
8,500.00	90.00	179.88	7,250.00	-1,566.83	306.97	1,567.47	0.00	0.00	0.00	
8,600.00	90.00	179.88	7,250.00	-1,666.83	307.19	1,667.47	0.00	0.00	0.00	
8,700.00	90.00	179.88	7,250.00	-1,766.83	307.41	1,767.47	0.00	0.00	0.00	
8,800.00	90.00	179.88	7,250.00	-1,866.83	307.62	1,867.47	0.00	0.00	0.00	
8,900.00	90.00	179.88	7,250.00	-1,966.83	307.84	1,967.47	0.00	0.00	0.00	
9,000.00	90.00	179.88	7,250.00	-2,066.83	308.06	2,067.47	0.00	0.00	0.00	
9,100.00	90.00	179.88	7,250.00	-2,166.83	308.27	2,167.47	0.00	0.00	0.00	
9,200.00	90.00	179.88	7,250.00	-2,266.83	308.49	2,267.47	0.00	0.00	0.00	
9,300.00	90.00	179.88	7,250.00	-2,366.83	308.71	2,367.47	0.00	0.00	0.00	
9,400.00	90.00	179.88	7,250.00	-2,466.83	308.92	2,467.47	0.00	0.00	0.00	
9,500.00	90.00	179.88	7,250.00	-2,566.83	309.14	2,567.47	0.00	0.00	0.00	
9,600.00	90.00	179.88	7,250.00	-2,666.83	309.36	2,667.47	0.00	0.00	0.00	
9,700.00	90.00	179.88	7,250.00	-2,766.83	309.57	2,767.47	0.00	0.00	0.00	
9,800.00	90.00	179.88	7,250.00	-2,866.82	309.79	2,867.47	0.00	0.00	0.00	
9,900.00	90.00	179.88	7,250.00	-2,966.82	310.00	2,967.47	0.00	0.00	0.00	
10,000.00	90.00	179.88	7,250.00	-3,066.82	310.22	3,067.47	0.00	0.00	0.00	
10,100.00	90.00	179.88	7,250.00	-3,166.82	310.44	3,167.47	0.00	0.00	0.00	
10,200.00	90.00	179.88	7,250.00	-3,266.82	310.65	3,267.47	0.00	0.00	0.00	
10,300.00	90.00	179.88	7,250.00	-3,366.82	310.87	3,367.47	0.00	0.00	0.00	
10,400.00	90.00	179.88	7,250.00	-3,466.82	311.09	3,467.47	0.00	0.00	0.00	
10,500.00	90.00	179.88	7,250.00	-3,566.82	311.30	3,567.47	0.00	0.00	0.00	
10,600.00	90.00	179.88	7,250.00	-3,666.82	311.52	3,667.47	0.00	0.00	0.00	
10,700.00	90.00	179.88	7,250.00	-3,766.82	311.74	3,767.47	0.00	0.00	0.00	
10,800.00	90.00	179.88	7,250.00	-3,866.82	311.95	3,867.47	0.00	0.00	0.00	
10,900.00	90.00	179.88	7,250.00	-3,966.82	312.17	3,967.47	0.00	0.00	0.00	
11,000.00	90.00	179.88	7,250.00	-4,066.82	312.39	4,067.47	0.00	0.00	0.00	
11,100.00	90.00	179.88	7,250.00	-4,166.82	312.60	4,167.47	0.00	0.00	0.00	
11,200.00	90.00	179.88	7,250.00	-4,266.82	312.82	4,267.47	0.00	0.00	0.00	
11,300.00	90.00	179.88	7,250.00	-4,366.82	313.03	4,367.47	0.00	0.00	0.00	
11,400.00	90.00	179.88	7,250.00	-4,466.82	313.25	4,467.47	0.00	0.00	0.00	
11,500.00	90.00	179.88	7,250.00	-4,566.82	313.47	4,567.47	0.00	0.00	0.00	
11,600.00	90.00	179.88	7,250.00	-4,666.82	313.68	4,667.47	0.00	0.00	0.00	
11,700.00	90.00	179.88	7,250.00	-4,766.82	313.90	4,767.47	0.00	0.00	0.00	
11,800.00	90.00	179.88	7,250.00	-4,866.82	314.12	4,867.47	0.00	0.00	0.00	
11,900.00	90.00	179.88	7,250.00	-4,966.82	314.33	4,967.47	0.00	0.00	0.00	
12,000.00	90.00	179.88	7,250.00	-5,066.82	314.55	5,067.47	0.00	0.00	0.00	
12,100.00	90.00	179.88	7,250.00	-5,166.82	314.77	5,167.47	0.00	0.00	0.00	
12,200.00	90.00	179.88	7,250.00	-5,266.82	314.98	5,267.47	0.00	0.00	0.00	
12,300.00	90.00	179.88	7,250.00	-5,366.82	315.20	5,367.47	0.00	0.00	0.00	
12,400.00	90.00	179.88	7,250.00	-5,466.82	315.42	5,467.47	0.00	0.00	0.00	
12,500.00	90.00	179.88	7,250.00	-5,566.82	315.63	5,567.47	0.00	0.00	0.00	
12,600.00	90.00	179.88	7,250.00	-5,666.82	315.85	5,667.47	0.00	0.00	0.00	
12,700.00	90.00	179.88	7,250.00	-5,766.82	316.06	5,767.47	0.00	0.00	0.00	
12,800.00	90.00	179.88	7,250.00	-5,866.82	316.28	5,867.47	0.00	0.00	0.00	
12,900.00	90.00	179.88	7,250.00	-5,966.82	316.50	5,967.47	0.00	0.00	0.00	
13,000.00	90.00	179.88	7,250.00	-6,066.82	316.71	6,067.47	0.00	0.00	0.00	
13,100.00	90.00	179.88	7,250.00	-6,166.82	316.93	6,167.47	0.00	0.00	0.00	
13,200.00	90.00	179.88	7,250.00	-6,266.82	317.15	6,267.47	0.00	0.00	0.00	
13,300.00	90.00	179.88	7,250.00	-6,366.82	317.36	6,367.47	0.00	0.00	0.00	
13,400.00	90.00	179.88	7,250.00	-6,466.82	317.58	6,467.47	0.00	0.00	0.00	
13,500.00	90.00	179.88	7,250.00	-6,566.82	317.80	6,567.47	0.00	0.00	0.00	
13,600.00	90.00	179.88	7,250.00	-6,666.82	318.01	6,667.47	0.00	0.00	0.00	
13,700.00	90.00	179.88	7,250.00	-6,766.82	318.23	6,767.47	0.00	0.00	0.00	
13,800.00	90.00	179.88	7,250.00	-6,866.82	318.45	6,867.47	0.00	0.00	0.00	

## Planning Report

<b>Database:</b>	EDM 5000.16 Single User Db	<b>Local Co-ordinate Reference:</b>	Well FAWN 2734-10H
<b>Company:</b>	VERDAD RESOURCES	<b>TVD Reference:</b>	RKB = 20' @ 5127.00usft (RIG)
<b>Project:</b>	WATTENBERG FIELD	<b>MD Reference:</b>	RKB = 20' @ 5127.00usft (RIG)
<b>Site:</b>	1N-65W-22 FAWN 2734 & 2833 PAD	<b>North Reference:</b>	True
<b>Well:</b>	FAWN 2734-10H	<b>Survey Calculation Method:</b>	Minimum Curvature
<b>Wellbore:</b>	Plan A		
<b>Design:</b>	Design #1		

Planned Survey										
Measured Depth (usft)	Inclination (°)	Azimuth (°)	Vertical Depth (usft)	+N/-S (usft)	+E/-W (usft)	Vertical Section (usft)	Dogleg Rate (°/100usft)	Build Rate (°/100usft)	Turn Rate (°/100usft)	
13,900.00	90.00	179.88	7,250.00	-6,966.82	318.66	6,967.47	0.00	0.00	0.00	
14,000.00	90.00	179.88	7,250.00	-7,066.82	318.88	7,067.47	0.00	0.00	0.00	
14,100.00	90.00	179.88	7,250.00	-7,166.81	319.09	7,167.47	0.00	0.00	0.00	
14,200.00	90.00	179.88	7,250.00	-7,266.81	319.31	7,267.47	0.00	0.00	0.00	
14,300.00	90.00	179.88	7,250.00	-7,366.81	319.53	7,367.47	0.00	0.00	0.00	
14,400.00	90.00	179.88	7,250.00	-7,466.81	319.74	7,467.47	0.00	0.00	0.00	
14,500.00	90.00	179.88	7,250.00	-7,566.81	319.96	7,567.47	0.00	0.00	0.00	
14,600.00	90.00	179.88	7,250.00	-7,666.81	320.18	7,667.47	0.00	0.00	0.00	
14,700.00	90.00	179.88	7,250.00	-7,766.81	320.39	7,767.47	0.00	0.00	0.00	
14,800.00	90.00	179.88	7,250.00	-7,866.81	320.61	7,867.47	0.00	0.00	0.00	
14,900.00	90.00	179.88	7,250.00	-7,966.81	320.83	7,967.47	0.00	0.00	0.00	
15,000.00	90.00	179.88	7,250.00	-8,066.81	321.04	8,067.47	0.00	0.00	0.00	
15,100.00	90.00	179.88	7,250.00	-8,166.81	321.26	8,167.47	0.00	0.00	0.00	
15,200.00	90.00	179.88	7,250.00	-8,266.81	321.48	8,267.47	0.00	0.00	0.00	
15,300.00	90.00	179.88	7,250.00	-8,366.81	321.69	8,367.47	0.00	0.00	0.00	
15,400.00	90.00	179.88	7,250.00	-8,466.81	321.91	8,467.47	0.00	0.00	0.00	
15,500.00	90.00	179.88	7,250.00	-8,566.81	322.12	8,567.47	0.00	0.00	0.00	
15,600.00	90.00	179.88	7,250.00	-8,666.81	322.34	8,667.47	0.00	0.00	0.00	
15,700.00	90.00	179.88	7,250.00	-8,766.81	322.56	8,767.47	0.00	0.00	0.00	
15,800.00	90.00	179.88	7,250.00	-8,866.81	322.77	8,867.47	0.00	0.00	0.00	
15,900.00	90.00	179.88	7,250.00	-8,966.81	322.99	8,967.47	0.00	0.00	0.00	
16,000.00	90.00	179.88	7,250.00	-9,066.81	323.21	9,067.47	0.00	0.00	0.00	
16,100.00	90.00	179.88	7,250.00	-9,166.81	323.42	9,167.47	0.00	0.00	0.00	
16,200.00	90.00	179.88	7,250.00	-9,266.81	323.64	9,267.47	0.00	0.00	0.00	
Begin Turn for AC @ 16200.00ft										
16,300.00	90.00	177.88	7,250.00	-9,366.79	325.60	9,367.45	2.00	0.00	-2.00	
16,343.80	90.00	177.00	7,250.00	-9,410.54	327.56	9,411.21	2.00	0.00	-2.00	
End Turn @ 16343.80ft										
16,400.00	90.00	177.00	7,250.00	-9,466.66	330.50	9,467.34	0.00	0.00	0.00	
16,500.00	90.00	177.00	7,250.00	-9,566.53	335.73	9,567.21	0.00	0.00	0.00	
16,600.00	90.00	177.00	7,250.00	-9,666.39	340.97	9,667.08	0.00	0.00	0.00	
16,673.80	90.00	177.00	7,250.00	-9,740.09	344.83	9,740.79	0.00	0.00	0.00	
Begin Turn to BHL @ 16673.80ft										
16,700.00	90.00	177.52	7,250.00	-9,766.26	346.08	9,766.96	2.00	0.00	2.00	
16,800.00	90.00	179.52	7,250.00	-9,866.22	348.66	9,866.93	2.00	0.00	2.00	



## Planning Report

<b>Database:</b>	EDM 5000.16 Single User Db	<b>Local Co-ordinate Reference:</b>	Well FAWN 2734-10H
<b>Company:</b>	VERDAD RESOURCES	<b>TVD Reference:</b>	RKB = 20' @ 5127.00usft (RIG)
<b>Project:</b>	WATTENBERG FIELD	<b>MD Reference:</b>	RKB = 20' @ 5127.00usft (RIG)
<b>Site:</b>	1N-65W-22 FAWN 2734 & 2833 PAD	<b>North Reference:</b>	True
<b>Well:</b>	FAWN 2734-10H	<b>Survey Calculation Method:</b>	Minimum Curvature
<b>Wellbore:</b>	Plan A		
<b>Design:</b>	Design #1		

Casing Points					
Measured Depth (usft)	Vertical Depth (usft)	Name		Casing Diameter (")	Hole Diameter (")
2,267.23	2,250.00	9 5/8"		9-5/8	13-1/2

Plan Annotations					
Measured Depth (usft)	Vertical Depth (usft)	Local Coordinates		Comment	
		+N/-S (usft)	+E/-W (usft)		
800.00	800.00	0.00	0.00	Begin Nudge @ 800.00ft	
1,300.00	1,297.47	-9.55	42.46	Hold Tangent @ 1300.00ft	
2,591.50	2,569.34	-58.74	261.27	Begin Drop @ 2591.50ft	
3,091.50	3,066.81	-68.28	303.73	Hold Vertical @ 3091.50ft	
6,638.07	6,613.38	-68.28	303.73	KOP @ 6638.07ft :: DLS = 9°/100'	
7,638.07	7,250.00	-704.90	305.11	End Build/TPZ @ 7638.07ft	
16,200.00	7,250.00	-9,266.81	323.64	Begin Turn for AC @ 16200.00ft	
16,343.80	7,250.00	-9,410.54	327.56	End Turn @ 16343.80ft	
16,673.80	7,250.00	-9,740.09	344.83	Begin Turn to BHL @ 16673.80ft	
16,947.52	7,250.00	-10,013.70	346.09	End Turn @ 16947.52ft	
17,316.96	7,250.00	-10,382.80	330.14	BPZ @ 17316.96ft	
17,407.04	7,250.00	-10,472.79	326.25	TD Well @ 17407.04ft	