

# **VERDAD RESOURCES**

**WATTENBERG FIELD**

**1N-65W-22 FAWN 2734 & 2833 PAD**

**FAWN 2734-09H**

**Plan A**

**Plan: Design #1**

## **Standard Planning Report**

**30 July, 2022**

Project: WATTENBERG FIELD  
Site: 1N-65W-22 FAWN 2734 & 2833 PAD  
Well: FAWN 2734-09H  
Wellbore: Plan A  
Design: Design #1

# VERDAD RESOURCES

## CASING DETAILS

TVD	MD	Name	Size
2250.00	2265.33	9 5/8"	9-5/8

SHL  
244' FSL  
2366' FWL

LP/TPZ  
460' FNL  
2171' FWL

BPZ  
460' FSL  
2175' FWL

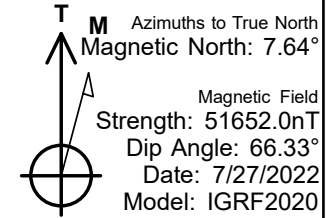
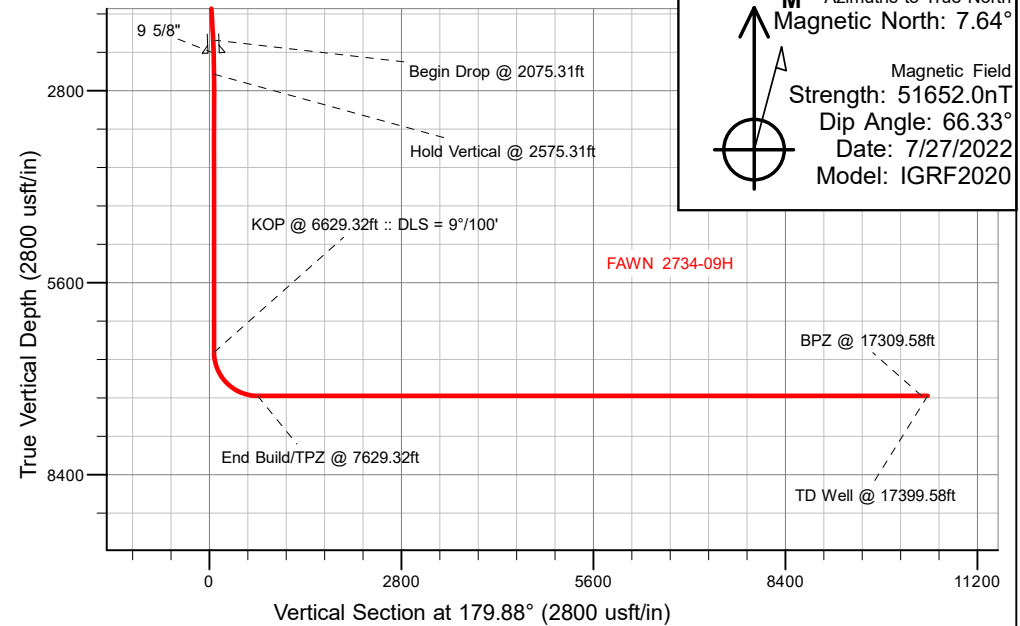
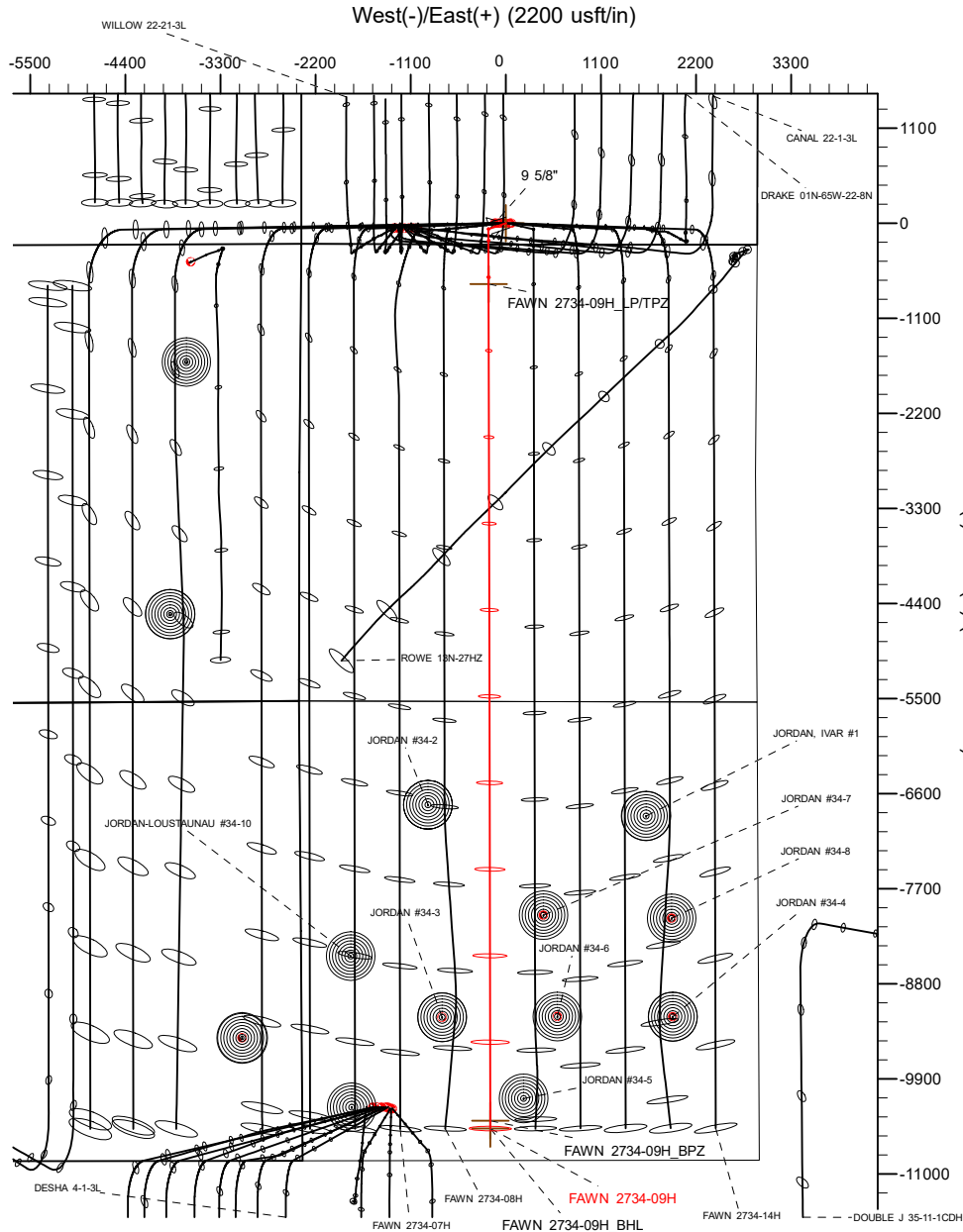
BHL  
370' FSL  
2175' FWL

## SECTION DETAILS

MD	Inc	Azi	TVD	+N/-S	+E/-W	Dleg	TFace	VSect	Target
0.00	0.00	0.00	0.00	0.00	0.00	0.00	0.00	0.00	
860.00	0.00	0.00	860.00	0.00	0.00	0.00	0.00	0.00	
1360.00	10.00	251.52	1357.47	-13.80	-41.28	2.00	251.52	13.71	
2075.31	10.00	251.52	2061.91	-53.17	-159.09	0.00	0.00	52.83	
2575.31	0.00	0.00	2559.37	-66.96	-200.36	2.00	180.00	66.54	
6629.32	0.00	0.00	6613.38	-66.96	-200.36	0.00	0.00	66.54	
7629.32	90.00	179.88	7250.00	-703.58	-199.06	9.00	179.88	703.16	
17399.58	90.00	179.88	7250.00	-10473.83	-179.13	0.00	0.00	10473.43	FAWN 2734-09H_BHL

## WELLBORE TARGET DETAILS (LAT/LONG)

Name	TVD	Northing	Easting	Latitude	Longitude
FAWN 2734-09H_SHL	0.00	1255031.01	3237701.91	40.030324	-104.651140
FAWN 2734-09H_LP/TPZ	7250.00	1254325.53	3237509.56	40.028393	-104.651851
FAWN 2734-09H_BPZ	7250.00	1244645.95	3237622.01	40.001819	-104.651780
FAWN 2734-09H_BHL	7250.00	1244555.95	3237623.05	40.001572	-104.651779



## WELL DETAILS: FAWN 2734-09H

GL = 5107'

RKB = 20' @ 5127.00usft (RIG)

Plan: Design #1 (FAWN 2734-09H/Plan A)

Date: 7/30/2022

## Planning Report

<b>Database:</b>	EDM 5000.16 Single User Db	<b>Local Co-ordinate Reference:</b>	Well FAWN 2734-09H
<b>Company:</b>	VERDAD RESOURCES	<b>TVD Reference:</b>	RKB = 20' @ 5127.00usft (RIG)
<b>Project:</b>	WATTENBERG FIELD	<b>MD Reference:</b>	RKB = 20' @ 5127.00usft (RIG)
<b>Site:</b>	1N-65W-22 FAWN 2734 & 2833 PAD	<b>North Reference:</b>	True
<b>Well:</b>	FAWN 2734-09H	<b>Survey Calculation Method:</b>	Minimum Curvature
<b>Wellbore:</b>	Plan A		
<b>Design:</b>	Design #1		

<b>Project</b>	WATTENBERG FIELD		
<b>Map System:</b>	US State Plane 1983	<b>System Datum:</b>	Mean Sea Level
<b>Geo Datum:</b>	North American Datum 1983		
<b>Map Zone:</b>	Colorado Northern Zone		

Site		1N-65W-22 FAWN 2734 & 2833 PAD				
Site Position:		Northing:	1,255,173.64	usft	Latitude:	40.030719
From:	Lat/Long	Easting:	3,237,589.54	usft	Longitude:	-104.651536
Position Uncertainty:	0.00	usft	Slot Radius:	13-3/16	"	

Well		FAWN 2734-09H				
Well Position	+N/-S	0.00 usft	Northing:	1,255,031.01 usft	Latitude:	40.030325
	+E/-W	0.00 usft	Easting:	3,237,701.91 usft	Longitude:	-104.651140
Position Uncertainty		3.28 usft	Wellhead Elevation:	usft	Ground Level:	5,107.00 usft
Grid Convergence:		0.55 °				

<b>Wellbore</b>	Plan A				
<b>Magnetics</b>	<b>Model Name</b>	<b>Sample Date</b>	<b>Declination (°)</b>	<b>Dip Angle (°)</b>	<b>Field Strength (nT)</b>
	IGRF202013	7/27/2022	7.64	66.33	51,651.95104787

<b>Design</b>	Design #1				
<b>Audit Notes:</b>					
<b>Version:</b>		<b>Phase:</b>	PLAN	<b>Tie On Depth:</b>	0.00
<b>Vertical Section:</b>	<b>Depth From (TVD) (usft)</b>	<b>+N/-S (usft)</b>	<b>+E/-W (usft)</b>	<b>Direction (°)</b>	
	0.00	0.00	0.00	179.88	

<b>Plan Survey Tool Program</b>		<b>Date</b>	7/30/2022		
<b>Depth From (usft)</b>	<b>Depth To (usft)</b>	<b>Survey (Wellbore)</b>	<b>Tool Name</b>	<b>Remarks</b>	
1	0.00	2,250.00	Design #1 (Plan A)	ISCWSA MWD	
				Fixed:v2:standard declination	
2	2,250.00	17,399.58	Design #1 (Plan A)	ISCWSA MWD	
				Fixed:v2:standard declination	

Planning Report

Database:	EDM 5000.16 Single User Db	Local Co-ordinate Reference:	Well FAWN 2734-09H
Company:	VERDAD RESOURCES	TVD Reference:	RKB = 20' @ 5127.00usft (RIG)
Project:	WATTENBERG FIELD	MD Reference:	RKB = 20' @ 5127.00usft (RIG)
Site:	1N-65W-22 FAWN 2734 & 2833 PAD	North Reference:	True
Well:	FAWN 2734-09H	Survey Calculation Method:	Minimum Curvature
Wellbore:	Plan A		
Design:	Design #1		

Plan Sections										
Measured Depth (usft)	Inclination (°)	Azimuth (°)	Vertical Depth (usft)	+N/-S (usft)	+E/-W (usft)	Dogleg Rate (°/100usft)	Build Rate (°/100usft)	Turn Rate (°/100usft)	TFO (°)	Target
0.00	0.00	0.00	0.00	0.00	0.00	0.00	0.00	0.00	0.00	
860.00	0.00	0.00	860.00	0.00	0.00	0.00	0.00	0.00	0.00	
1,360.00	10.00	251.52	1,357.47	-13.80	-41.28	2.00	2.00	0.00	251.52	
2,075.31	10.00	251.52	2,061.91	-53.17	-159.09	0.00	0.00	0.00	0.00	
2,575.31	0.00	0.00	2,559.37	-66.96	-200.36	2.00	-2.00	0.00	180.00	
6,629.32	0.00	0.00	6,613.38	-66.96	-200.36	0.00	0.00	0.00	0.00	
7,629.32	90.00	179.88	7,250.00	-703.58	-199.06	9.00	9.00	17.99	179.88	
17,399.58	90.00	179.88	7,250.00	-10,473.83	-179.13	0.00	0.00	0.00	0.00	FAWN 2734-09H_BHI

## Planning Report

<b>Database:</b>	EDM 5000.16 Single User Db	<b>Local Co-ordinate Reference:</b>	Well FAWN 2734-09H
<b>Company:</b>	VERDAD RESOURCES	<b>TVD Reference:</b>	RKB = 20' @ 5127.00usft (RIG)
<b>Project:</b>	WATTENBERG FIELD	<b>MD Reference:</b>	RKB = 20' @ 5127.00usft (RIG)
<b>Site:</b>	1N-65W-22 FAWN 2734 & 2833 PAD	<b>North Reference:</b>	True
<b>Well:</b>	FAWN 2734-09H	<b>Survey Calculation Method:</b>	Minimum Curvature
<b>Wellbore:</b>	Plan A		
<b>Design:</b>	Design #1		

Planned Survey									
Measured Depth (usft)	Inclination (°)	Azimuth (°)	Vertical Depth (usft)	+N/-S (usft)	+E/-W (usft)	Vertical Section (usft)	Dogleg Rate (°/100usft)	Build Rate (°/100usft)	Turn Rate (°/100usft)
0.00	0.00	0.00	0.00	0.00	0.00	0.00	0.00	0.00	0.00
100.00	0.00	0.00	100.00	0.00	0.00	0.00	0.00	0.00	0.00
200.00	0.00	0.00	200.00	0.00	0.00	0.00	0.00	0.00	0.00
300.00	0.00	0.00	300.00	0.00	0.00	0.00	0.00	0.00	0.00
400.00	0.00	0.00	400.00	0.00	0.00	0.00	0.00	0.00	0.00
500.00	0.00	0.00	500.00	0.00	0.00	0.00	0.00	0.00	0.00
600.00	0.00	0.00	600.00	0.00	0.00	0.00	0.00	0.00	0.00
700.00	0.00	0.00	700.00	0.00	0.00	0.00	0.00	0.00	0.00
800.00	0.00	0.00	800.00	0.00	0.00	0.00	0.00	0.00	0.00
860.00	0.00	0.00	860.00	0.00	0.00	0.00	0.00	0.00	0.00
Begin Nudge @ 860.00ft									
900.00	0.80	251.52	900.00	-0.09	-0.26	0.09	2.00	2.00	0.00
1,000.00	2.80	251.52	999.94	-1.08	-3.24	1.08	2.00	2.00	0.00
1,100.00	4.80	251.52	1,099.72	-3.18	-9.53	3.16	2.00	2.00	0.00
1,200.00	6.80	251.52	1,199.20	-6.39	-19.11	6.35	2.00	2.00	0.00
1,300.00	8.80	251.52	1,298.27	-10.69	-31.98	10.62	2.00	2.00	0.00
1,360.00	10.00	251.52	1,357.47	-13.80	-41.28	13.71	2.00	2.00	0.00
Hold Tangent @ 1360.00ft									
1,400.00	10.00	251.52	1,396.86	-16.00	-47.87	15.90	0.00	0.00	0.00
1,500.00	10.00	251.52	1,495.34	-21.50	-64.34	21.37	0.00	0.00	0.00
1,600.00	10.00	251.52	1,593.82	-27.01	-80.80	26.84	0.00	0.00	0.00
1,700.00	10.00	251.52	1,692.30	-32.51	-97.27	32.31	0.00	0.00	0.00
1,800.00	10.00	251.52	1,790.78	-38.01	-113.74	37.78	0.00	0.00	0.00
1,900.00	10.00	251.52	1,889.26	-43.52	-130.21	43.25	0.00	0.00	0.00
2,000.00	10.00	251.52	1,987.74	-49.02	-146.68	48.72	0.00	0.00	0.00
2,075.31	10.00	251.52	2,061.91	-53.17	-159.09	52.83	0.00	0.00	0.00
Begin Drop @ 2075.31ft									
2,100.00	9.51	251.52	2,086.24	-54.49	-163.05	54.15	2.00	-2.00	0.00
2,200.00	7.51	251.52	2,185.14	-59.18	-177.08	58.81	2.00	-2.00	0.00
2,265.33	6.20	251.52	2,250.00	-61.65	-184.47	61.27	2.00	-2.00	0.00
9 5/8"									
2,300.00	5.51	251.52	2,284.49	-62.77	-187.83	62.38	2.00	-2.00	0.00
2,400.00	3.51	251.52	2,384.17	-65.26	-195.28	64.85	2.00	-2.00	0.00
2,500.00	1.51	251.52	2,484.07	-66.65	-199.43	66.23	2.00	-2.00	0.00
2,575.31	0.00	0.00	2,559.37	-66.96	-200.36	66.54	2.00	-2.00	144.04
Hold Vertical @ 2575.31ft									
2,600.00	0.00	0.00	2,584.06	-66.96	-200.36	66.54	0.00	0.00	0.00
2,700.00	0.00	0.00	2,684.06	-66.96	-200.36	66.54	0.00	0.00	0.00
2,800.00	0.00	0.00	2,784.06	-66.96	-200.36	66.54	0.00	0.00	0.00
2,900.00	0.00	0.00	2,884.06	-66.96	-200.36	66.54	0.00	0.00	0.00
3,000.00	0.00	0.00	2,984.06	-66.96	-200.36	66.54	0.00	0.00	0.00
3,100.00	0.00	0.00	3,084.06	-66.96	-200.36	66.54	0.00	0.00	0.00
3,200.00	0.00	0.00	3,184.06	-66.96	-200.36	66.54	0.00	0.00	0.00
3,300.00	0.00	0.00	3,284.06	-66.96	-200.36	66.54	0.00	0.00	0.00
3,400.00	0.00	0.00	3,384.06	-66.96	-200.36	66.54	0.00	0.00	0.00
3,500.00	0.00	0.00	3,484.06	-66.96	-200.36	66.54	0.00	0.00	0.00
3,600.00	0.00	0.00	3,584.06	-66.96	-200.36	66.54	0.00	0.00	0.00
3,700.00	0.00	0.00	3,684.06	-66.96	-200.36	66.54	0.00	0.00	0.00
3,800.00	0.00	0.00	3,784.06	-66.96	-200.36	66.54	0.00	0.00	0.00
3,900.00	0.00	0.00	3,884.06	-66.96	-200.36	66.54	0.00	0.00	0.00
4,000.00	0.00	0.00	3,984.06	-66.96	-200.36	66.54	0.00	0.00	0.00
4,100.00	0.00	0.00	4,084.06	-66.96	-200.36	66.54	0.00	0.00	0.00
4,200.00	0.00	0.00	4,184.06	-66.96	-200.36	66.54	0.00	0.00	0.00
4,300.00	0.00	0.00	4,284.06	-66.96	-200.36	66.54	0.00	0.00	0.00

## Planning Report

<b>Database:</b>	EDM 5000.16 Single User Db	<b>Local Co-ordinate Reference:</b>	Well FAWN 2734-09H
<b>Company:</b>	VERDAD RESOURCES	<b>TVD Reference:</b>	RKB = 20' @ 5127.00usft (RIG)
<b>Project:</b>	WATTENBERG FIELD	<b>MD Reference:</b>	RKB = 20' @ 5127.00usft (RIG)
<b>Site:</b>	1N-65W-22 FAWN 2734 & 2833 PAD	<b>North Reference:</b>	True
<b>Well:</b>	FAWN 2734-09H	<b>Survey Calculation Method:</b>	Minimum Curvature
<b>Wellbore:</b>	Plan A		
<b>Design:</b>	Design #1		

Planned Survey									
Measured Depth (usft)	Inclination (°)	Azimuth (°)	Vertical Depth (usft)	+N/-S (usft)	+E/-W (usft)	Vertical Section (usft)	Dogleg Rate (°/100usft)	Build Rate (°/100usft)	Turn Rate (°/100usft)
4,400.00	0.00	0.00	4,384.06	-66.96	-200.36	66.54	0.00	0.00	0.00
4,500.00	0.00	0.00	4,484.06	-66.96	-200.36	66.54	0.00	0.00	0.00
4,600.00	0.00	0.00	4,584.06	-66.96	-200.36	66.54	0.00	0.00	0.00
4,700.00	0.00	0.00	4,684.06	-66.96	-200.36	66.54	0.00	0.00	0.00
4,800.00	0.00	0.00	4,784.06	-66.96	-200.36	66.54	0.00	0.00	0.00
4,900.00	0.00	0.00	4,884.06	-66.96	-200.36	66.54	0.00	0.00	0.00
5,000.00	0.00	0.00	4,984.06	-66.96	-200.36	66.54	0.00	0.00	0.00
5,100.00	0.00	0.00	5,084.06	-66.96	-200.36	66.54	0.00	0.00	0.00
5,200.00	0.00	0.00	5,184.06	-66.96	-200.36	66.54	0.00	0.00	0.00
5,300.00	0.00	0.00	5,284.06	-66.96	-200.36	66.54	0.00	0.00	0.00
5,400.00	0.00	0.00	5,384.06	-66.96	-200.36	66.54	0.00	0.00	0.00
5,500.00	0.00	0.00	5,484.06	-66.96	-200.36	66.54	0.00	0.00	0.00
5,600.00	0.00	0.00	5,584.06	-66.96	-200.36	66.54	0.00	0.00	0.00
5,700.00	0.00	0.00	5,684.06	-66.96	-200.36	66.54	0.00	0.00	0.00
5,800.00	0.00	0.00	5,784.06	-66.96	-200.36	66.54	0.00	0.00	0.00
5,900.00	0.00	0.00	5,884.06	-66.96	-200.36	66.54	0.00	0.00	0.00
6,000.00	0.00	0.00	5,984.06	-66.96	-200.36	66.54	0.00	0.00	0.00
6,100.00	0.00	0.00	6,084.06	-66.96	-200.36	66.54	0.00	0.00	0.00
6,200.00	0.00	0.00	6,184.06	-66.96	-200.36	66.54	0.00	0.00	0.00
6,300.00	0.00	0.00	6,284.06	-66.96	-200.36	66.54	0.00	0.00	0.00
6,400.00	0.00	0.00	6,384.06	-66.96	-200.36	66.54	0.00	0.00	0.00
6,500.00	0.00	0.00	6,484.06	-66.96	-200.36	66.54	0.00	0.00	0.00
6,600.00	0.00	0.00	6,584.06	-66.96	-200.36	66.54	0.00	0.00	0.00
6,629.32	0.00	0.00	6,613.38	-66.96	-200.36	66.54	0.00	0.00	0.00
<b>KOP @ 6629.32ft :: DLS = 9°/100'</b>									
6,650.00	1.86	179.88	6,634.06	-67.30	-200.36	66.88	9.00	9.00	0.00
6,700.00	6.36	179.88	6,683.92	-70.88	-200.36	70.46	9.00	9.00	0.00
6,750.00	10.86	179.88	6,733.34	-78.37	-200.34	77.95	9.00	9.00	0.00
6,800.00	15.36	179.88	6,782.03	-89.71	-200.32	89.29	9.00	9.00	0.00
6,850.00	19.86	179.88	6,829.67	-104.83	-200.29	104.41	9.00	9.00	0.00
6,900.00	24.36	179.88	6,875.98	-123.65	-200.25	123.23	9.00	9.00	0.00
6,950.00	28.86	179.88	6,920.67	-146.04	-200.20	145.62	9.00	9.00	0.00
7,000.00	33.36	179.88	6,963.47	-171.86	-200.15	171.45	9.00	9.00	0.00
7,050.00	37.86	179.88	7,004.11	-200.97	-200.09	200.55	9.00	9.00	0.00
7,100.00	42.36	179.88	7,042.34	-233.18	-200.02	232.76	9.00	9.00	0.00
7,150.00	46.86	179.88	7,077.92	-268.28	-199.95	267.86	9.00	9.00	0.00
7,200.00	51.36	179.88	7,110.65	-306.07	-199.88	305.65	9.00	9.00	0.00
7,250.00	55.86	179.88	7,140.30	-346.31	-199.79	345.89	9.00	9.00	0.00
7,300.00	60.36	179.88	7,166.71	-388.75	-199.71	388.34	9.00	9.00	0.00
7,350.00	64.86	179.88	7,189.70	-433.14	-199.62	432.72	9.00	9.00	0.00
7,400.00	69.36	179.88	7,209.15	-479.19	-199.52	478.77	9.00	9.00	0.00
7,450.00	73.86	179.88	7,224.92	-526.62	-199.43	526.20	9.00	9.00	0.00
7,500.00	78.36	179.88	7,236.91	-575.15	-199.33	574.73	9.00	9.00	0.00
7,550.00	82.86	179.88	7,245.07	-624.47	-199.23	624.05	9.00	9.00	0.00
7,600.00	87.36	179.88	7,249.33	-674.27	-199.12	673.85	9.00	9.00	0.00
7,629.32	90.00	179.88	7,250.00	-703.58	-199.06	703.16	9.00	9.00	0.00
<b>End Build/TPZ @ 7629.32ft</b>									
7,700.00	90.00	179.88	7,250.00	-774.26	-198.92	773.84	0.00	0.00	0.00
7,800.00	90.00	179.88	7,250.00	-874.26	-198.72	873.84	0.00	0.00	0.00
7,900.00	90.00	179.88	7,250.00	-974.26	-198.51	973.84	0.00	0.00	0.00
8,000.00	90.00	179.88	7,250.00	-1,074.26	-198.31	1,073.84	0.00	0.00	0.00
8,100.00	90.00	179.88	7,250.00	-1,174.26	-198.10	1,173.84	0.00	0.00	0.00
8,200.00	90.00	179.88	7,250.00	-1,274.26	-197.90	1,273.84	0.00	0.00	0.00

## Planning Report

<b>Database:</b>	EDM 5000.16 Single User Db	<b>Local Co-ordinate Reference:</b>	Well FAWN 2734-09H
<b>Company:</b>	VERDAD RESOURCES	<b>TVD Reference:</b>	RKB = 20' @ 5127.00usft (RIG)
<b>Project:</b>	WATTENBERG FIELD	<b>MD Reference:</b>	RKB = 20' @ 5127.00usft (RIG)
<b>Site:</b>	1N-65W-22 FAWN 2734 & 2833 PAD	<b>North Reference:</b>	True
<b>Well:</b>	FAWN 2734-09H	<b>Survey Calculation Method:</b>	Minimum Curvature
<b>Wellbore:</b>	Plan A		
<b>Design:</b>	Design #1		

Planned Survey										
Measured Depth (usft)	Inclination (°)	Azimuth (°)	Vertical Depth (usft)	+N/-S (usft)	+E/-W (usft)	Vertical Section (usft)	Dogleg Rate (°/100usft)	Build Rate (°/100usft)	Turn Rate (°/100usft)	
8,300.00	90.00	179.88	7,250.00	-1,374.26	-197.70	1,373.84	0.00	0.00	0.00	
8,400.00	90.00	179.88	7,250.00	-1,474.26	-197.49	1,473.84	0.00	0.00	0.00	
8,500.00	90.00	179.88	7,250.00	-1,574.26	-197.29	1,573.84	0.00	0.00	0.00	
8,600.00	90.00	179.88	7,250.00	-1,674.26	-197.08	1,673.84	0.00	0.00	0.00	
8,700.00	90.00	179.88	7,250.00	-1,774.26	-196.88	1,773.84	0.00	0.00	0.00	
8,800.00	90.00	179.88	7,250.00	-1,874.26	-196.68	1,873.84	0.00	0.00	0.00	
8,900.00	90.00	179.88	7,250.00	-1,974.26	-196.47	1,973.84	0.00	0.00	0.00	
9,000.00	90.00	179.88	7,250.00	-2,074.26	-196.27	2,073.84	0.00	0.00	0.00	
9,100.00	90.00	179.88	7,250.00	-2,174.26	-196.06	2,173.84	0.00	0.00	0.00	
9,200.00	90.00	179.88	7,250.00	-2,274.26	-195.86	2,273.84	0.00	0.00	0.00	
9,300.00	90.00	179.88	7,250.00	-2,374.26	-195.66	2,373.84	0.00	0.00	0.00	
9,400.00	90.00	179.88	7,250.00	-2,474.26	-195.45	2,473.84	0.00	0.00	0.00	
9,500.00	90.00	179.88	7,250.00	-2,574.26	-195.25	2,573.84	0.00	0.00	0.00	
9,600.00	90.00	179.88	7,250.00	-2,674.26	-195.04	2,673.84	0.00	0.00	0.00	
9,700.00	90.00	179.88	7,250.00	-2,774.26	-194.84	2,773.84	0.00	0.00	0.00	
9,800.00	90.00	179.88	7,250.00	-2,874.26	-194.64	2,873.84	0.00	0.00	0.00	
9,900.00	90.00	179.88	7,250.00	-2,974.26	-194.43	2,973.84	0.00	0.00	0.00	
10,000.00	90.00	179.88	7,250.00	-3,074.26	-194.23	3,073.84	0.00	0.00	0.00	
10,100.00	90.00	179.88	7,250.00	-3,174.26	-194.02	3,173.84	0.00	0.00	0.00	
10,200.00	90.00	179.88	7,250.00	-3,274.26	-193.82	3,273.84	0.00	0.00	0.00	
10,300.00	90.00	179.88	7,250.00	-3,374.26	-193.62	3,373.84	0.00	0.00	0.00	
10,400.00	90.00	179.88	7,250.00	-3,474.26	-193.41	3,473.84	0.00	0.00	0.00	
10,500.00	90.00	179.88	7,250.00	-3,574.26	-193.21	3,573.84	0.00	0.00	0.00	
10,600.00	90.00	179.88	7,250.00	-3,674.26	-193.00	3,673.84	0.00	0.00	0.00	
10,700.00	90.00	179.88	7,250.00	-3,774.26	-192.80	3,773.84	0.00	0.00	0.00	
10,800.00	90.00	179.88	7,250.00	-3,874.25	-192.60	3,873.84	0.00	0.00	0.00	
10,900.00	90.00	179.88	7,250.00	-3,974.25	-192.39	3,973.84	0.00	0.00	0.00	
11,000.00	90.00	179.88	7,250.00	-4,074.25	-192.19	4,073.84	0.00	0.00	0.00	
11,100.00	90.00	179.88	7,250.00	-4,174.25	-191.98	4,173.84	0.00	0.00	0.00	
11,200.00	90.00	179.88	7,250.00	-4,274.25	-191.78	4,273.84	0.00	0.00	0.00	
11,300.00	90.00	179.88	7,250.00	-4,374.25	-191.58	4,373.84	0.00	0.00	0.00	
11,400.00	90.00	179.88	7,250.00	-4,474.25	-191.37	4,473.84	0.00	0.00	0.00	
11,500.00	90.00	179.88	7,250.00	-4,574.25	-191.17	4,573.84	0.00	0.00	0.00	
11,600.00	90.00	179.88	7,250.00	-4,674.25	-190.96	4,673.84	0.00	0.00	0.00	
11,700.00	90.00	179.88	7,250.00	-4,774.25	-190.76	4,773.84	0.00	0.00	0.00	
11,800.00	90.00	179.88	7,250.00	-4,874.25	-190.56	4,873.84	0.00	0.00	0.00	
11,900.00	90.00	179.88	7,250.00	-4,974.25	-190.35	4,973.84	0.00	0.00	0.00	
12,000.00	90.00	179.88	7,250.00	-5,074.25	-190.15	5,073.84	0.00	0.00	0.00	
12,100.00	90.00	179.88	7,250.00	-5,174.25	-189.94	5,173.84	0.00	0.00	0.00	
12,200.00	90.00	179.88	7,250.00	-5,274.25	-189.74	5,273.84	0.00	0.00	0.00	
12,300.00	90.00	179.88	7,250.00	-5,374.25	-189.53	5,373.84	0.00	0.00	0.00	
12,400.00	90.00	179.88	7,250.00	-5,474.25	-189.33	5,473.84	0.00	0.00	0.00	
12,500.00	90.00	179.88	7,250.00	-5,574.25	-189.13	5,573.84	0.00	0.00	0.00	
12,600.00	90.00	179.88	7,250.00	-5,674.25	-188.92	5,673.84	0.00	0.00	0.00	
12,700.00	90.00	179.88	7,250.00	-5,774.25	-188.72	5,773.84	0.00	0.00	0.00	
12,800.00	90.00	179.88	7,250.00	-5,874.25	-188.51	5,873.84	0.00	0.00	0.00	
12,900.00	90.00	179.88	7,250.00	-5,974.25	-188.31	5,973.84	0.00	0.00	0.00	
13,000.00	90.00	179.88	7,250.00	-6,074.25	-188.11	6,073.84	0.00	0.00	0.00	
13,100.00	90.00	179.88	7,250.00	-6,174.25	-187.90	6,173.84	0.00	0.00	0.00	
13,200.00	90.00	179.88	7,250.00	-6,274.25	-187.70	6,273.84	0.00	0.00	0.00	
13,300.00	90.00	179.88	7,250.00	-6,374.25	-187.49	6,373.84	0.00	0.00	0.00	
13,400.00	90.00	179.88	7,250.00	-6,474.25	-187.29	6,473.84	0.00	0.00	0.00	
13,500.00	90.00	179.88	7,250.00	-6,574.25	-187.09	6,573.84	0.00	0.00	0.00	
13,600.00	90.00	179.88	7,250.00	-6,674.25	-186.88	6,673.84	0.00	0.00	0.00	

## Planning Report

<b>Database:</b>	EDM 5000.16 Single User Db	<b>Local Co-ordinate Reference:</b>	Well FAWN 2734-09H
<b>Company:</b>	VERDAD RESOURCES	<b>TVD Reference:</b>	RKB = 20' @ 5127.00usft (RIG)
<b>Project:</b>	WATTENBERG FIELD	<b>MD Reference:</b>	RKB = 20' @ 5127.00usft (RIG)
<b>Site:</b>	1N-65W-22 FAWN 2734 & 2833 PAD	<b>North Reference:</b>	True
<b>Well:</b>	FAWN 2734-09H	<b>Survey Calculation Method:</b>	Minimum Curvature
<b>Wellbore:</b>	Plan A		
<b>Design:</b>	Design #1		

Planned Survey										
Measured Depth (usft)	Inclination (°)	Azimuth (°)	Vertical Depth (usft)	+N/-S (usft)	+E/-W (usft)	Vertical Section (usft)	Dogleg Rate (°/100usft)	Build Rate (°/100usft)	Turn Rate (°/100usft)	
13,700.00	90.00	179.88	7,250.00	-6,774.25	-186.68	6,773.84	0.00	0.00	0.00	
13,800.00	90.00	179.88	7,250.00	-6,874.25	-186.47	6,873.84	0.00	0.00	0.00	
13,900.00	90.00	179.88	7,250.00	-6,974.25	-186.27	6,973.84	0.00	0.00	0.00	
14,000.00	90.00	179.88	7,250.00	-7,074.25	-186.07	7,073.84	0.00	0.00	0.00	
14,100.00	90.00	179.88	7,250.00	-7,174.25	-185.86	7,173.84	0.00	0.00	0.00	
14,200.00	90.00	179.88	7,250.00	-7,274.25	-185.66	7,273.84	0.00	0.00	0.00	
14,300.00	90.00	179.88	7,250.00	-7,374.25	-185.45	7,373.84	0.00	0.00	0.00	
14,400.00	90.00	179.88	7,250.00	-7,474.25	-185.25	7,473.84	0.00	0.00	0.00	
14,500.00	90.00	179.88	7,250.00	-7,574.25	-185.05	7,573.84	0.00	0.00	0.00	
14,600.00	90.00	179.88	7,250.00	-7,674.25	-184.84	7,673.84	0.00	0.00	0.00	
14,700.00	90.00	179.88	7,250.00	-7,774.25	-184.64	7,773.84	0.00	0.00	0.00	
14,800.00	90.00	179.88	7,250.00	-7,874.25	-184.43	7,873.84	0.00	0.00	0.00	
14,900.00	90.00	179.88	7,250.00	-7,974.25	-184.23	7,973.84	0.00	0.00	0.00	
15,000.00	90.00	179.88	7,250.00	-8,074.25	-184.03	8,073.84	0.00	0.00	0.00	
15,100.00	90.00	179.88	7,250.00	-8,174.25	-183.82	8,173.84	0.00	0.00	0.00	
15,200.00	90.00	179.88	7,250.00	-8,274.25	-183.62	8,273.84	0.00	0.00	0.00	
15,300.00	90.00	179.88	7,250.00	-8,374.25	-183.41	8,373.84	0.00	0.00	0.00	
15,400.00	90.00	179.88	7,250.00	-8,474.25	-183.21	8,473.84	0.00	0.00	0.00	
15,500.00	90.00	179.88	7,250.00	-8,574.25	-183.01	8,573.84	0.00	0.00	0.00	
15,600.00	90.00	179.88	7,250.00	-8,674.25	-182.80	8,673.84	0.00	0.00	0.00	
15,700.00	90.00	179.88	7,250.00	-8,774.24	-182.60	8,773.84	0.00	0.00	0.00	
15,800.00	90.00	179.88	7,250.00	-8,874.24	-182.39	8,873.84	0.00	0.00	0.00	
15,900.00	90.00	179.88	7,250.00	-8,974.24	-182.19	8,973.84	0.00	0.00	0.00	
16,000.00	90.00	179.88	7,250.00	-9,074.24	-181.99	9,073.84	0.00	0.00	0.00	
16,100.00	90.00	179.88	7,250.00	-9,174.24	-181.78	9,173.84	0.00	0.00	0.00	
16,200.00	90.00	179.88	7,250.00	-9,274.24	-181.58	9,273.84	0.00	0.00	0.00	
16,300.00	90.00	179.88	7,250.00	-9,374.24	-181.37	9,373.84	0.00	0.00	0.00	
16,400.00	90.00	179.88	7,250.00	-9,474.24	-181.17	9,473.84	0.00	0.00	0.00	
16,500.00	90.00	179.88	7,250.00	-9,574.24	-180.97	9,573.84	0.00	0.00	0.00	
16,600.00	90.00	179.88	7,250.00	-9,674.24	-180.76	9,673.84	0.00	0.00	0.00	
16,700.00	90.00	179.88	7,250.00	-9,774.24	-180.56	9,773.84	0.00	0.00	0.00	
16,800.00	90.00	179.88	7,250.00	-9,874.24	-180.35	9,873.84	0.00	0.00	0.00	
16,900.00	90.00	179.88	7,250.00	-9,974.24	-180.15	9,973.84	0.00	0.00	0.00	
17,000.00	90.00	179.88	7,250.00	-10,074.24	-179.95	10,073.84	0.00	0.00	0.00	
17,100.00	90.00	179.88	7,250.00	-10,174.24	-179.74	10,173.84	0.00	0.00	0.00	
17,200.00	90.00	179.88	7,250.00	-10,274.24	-179.54	10,273.84	0.00	0.00	0.00	
17,300.00	90.00	179.88	7,250.00	-10,374.24	-179.33	10,373.84	0.00	0.00	0.00	
17,309.58	90.00	179.88	7,250.00	-10,383.82	-179.31	10,383.42	0.00	0.00	0.00	
BPZ @ 17309.58ft										
17,399.58	90.00	179.88	7,250.00	-10,473.83	-179.13	10,473.43	0.00	0.00	0.00	
TD Well @ 17399.58ft										

Casing Points					
Measured Depth (usft)	Vertical Depth (usft)	Name		Casing Diameter (")	Hole Diameter (")
2,265.33	2,250.00	9 5/8"		9-5/8	13-1/2



## Planning Report

<b>Database:</b>	EDM 5000.16 Single User Db	<b>Local Co-ordinate Reference:</b>	Well FAWN 2734-09H
<b>Company:</b>	VERDAD RESOURCES	<b>TVD Reference:</b>	RKB = 20' @ 5127.00usft (RIG)
<b>Project:</b>	WATTENBERG FIELD	<b>MD Reference:</b>	RKB = 20' @ 5127.00usft (RIG)
<b>Site:</b>	1N-65W-22 FAWN 2734 & 2833 PAD	<b>North Reference:</b>	True
<b>Well:</b>	FAWN 2734-09H	<b>Survey Calculation Method:</b>	Minimum Curvature
<b>Wellbore:</b>	Plan A		
<b>Design:</b>	Design #1		

Plan Annotations				
Measured Depth (usft)	Vertical Depth (usft)	Local Coordinates		Comment
		+N/-S (usft)	+E/-W (usft)	
860.00	860.00	0.00	0.00	Begin Nudge @ 860.00ft
1,360.00	1,357.47	-13.80	-41.28	Hold Tangent @ 1360.00ft
2,075.31	2,061.91	-53.17	-159.09	Begin Drop @ 2075.31ft
2,575.31	2,559.37	-66.96	-200.36	Hold Vertical @ 2575.31ft
6,629.32	6,613.38	-66.96	-200.36	KOP @ 6629.32ft :: DLS = 9°/100'
7,629.32	7,250.00	-703.58	-199.06	End Build/TPZ @ 7629.32ft
17,309.58	7,250.00	-10,383.82	-179.31	BPZ @ 17309.58ft
17,399.58	7,250.00	-10,473.83	-179.13	TD Well @ 17399.58ft