

VERDAD RESOURCES

WATTENBERG FIELD

1N-65W-22 FAWN 2734 & 2833 PAD

FAWN 2734-08H

Plan A

Plan: Design #1

Standard Planning Report

30 July, 2022

Project: WATTENBERG FIELD
Site: 1N-65W-22 FAWN 2734 & 2833 PAD
Well: FAWN 2734-08H
Wellbore: Plan A
Design: Design #1

VERDAD RESOURCES

CASING DETAILS

TVD	MD	Name	Size
2250.00	2258.06	9 5/8"	9-5/8

SHL
244' FSL
2350' FWL

LP/TPZ
460' FNL
1651' FWL

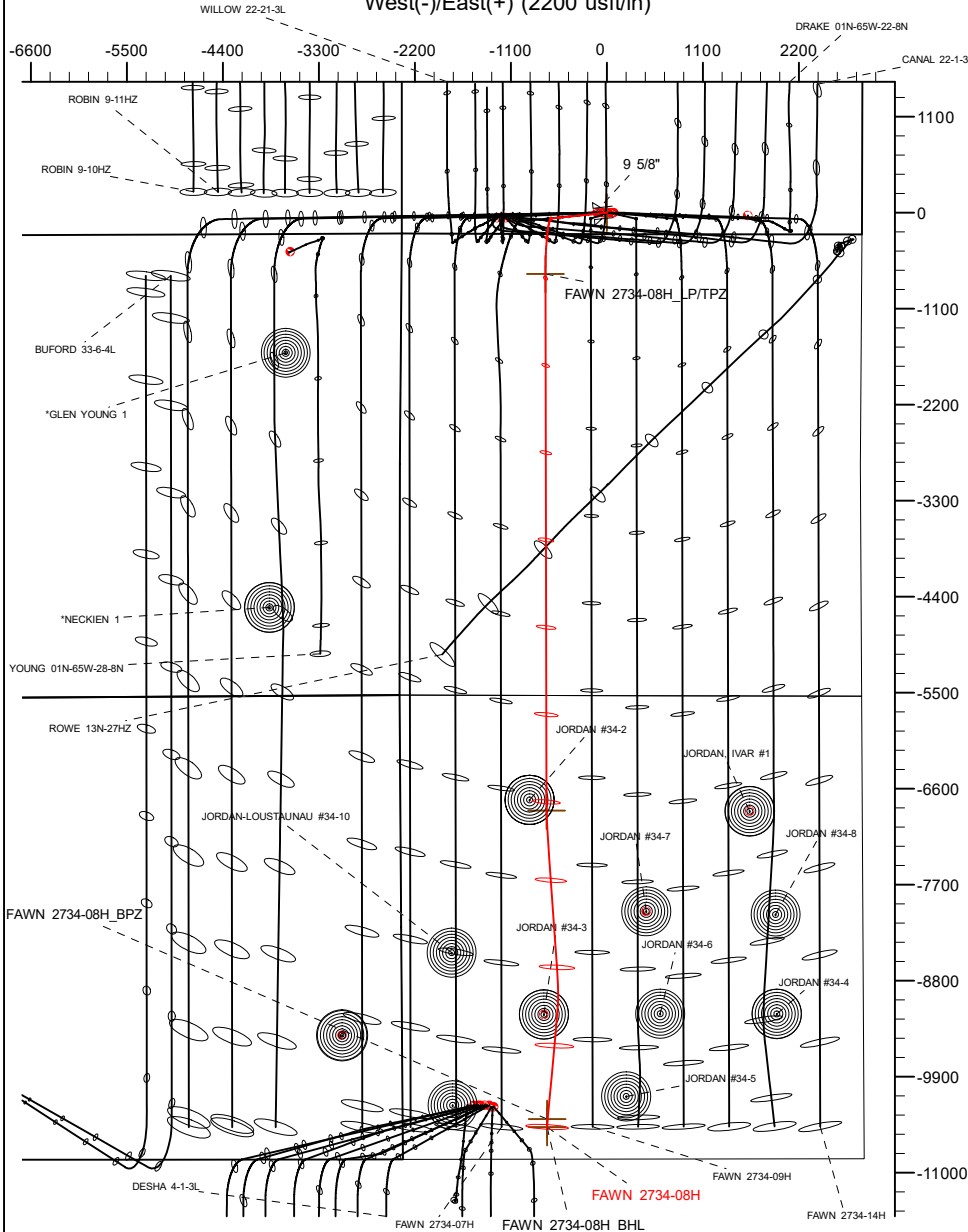
BPZ
460' FSL
1654' FWL

BHL
370' FSL
1654' FWL

SECTION DETAILS

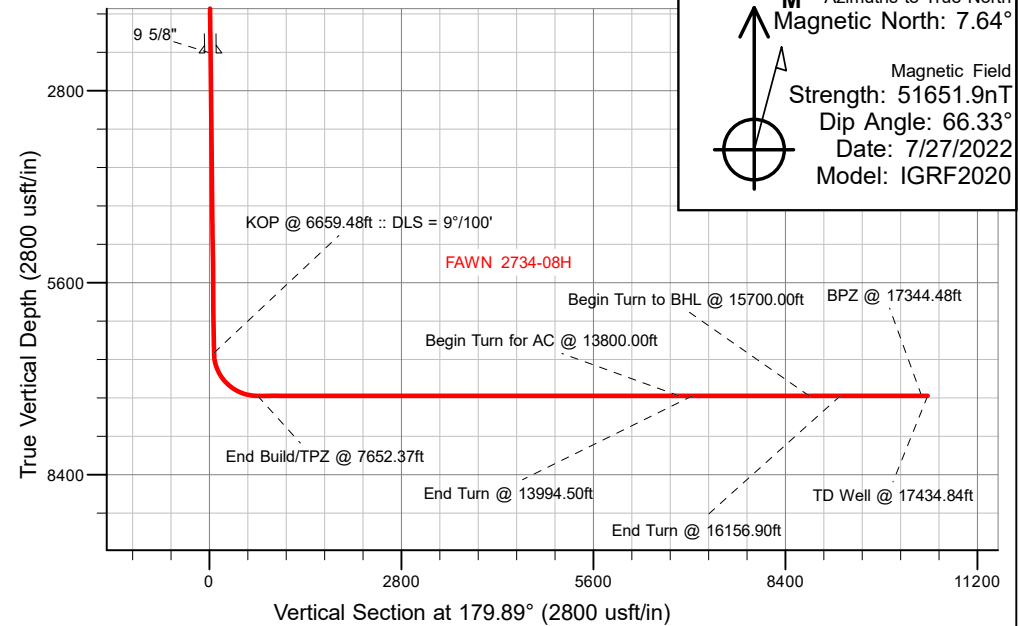
MD	Inc	Azi	TVD	+N/-S	+E/-W	Dleg	TFace	VSect	Target
0.00	0.00	0.00	0.00	0.00	0.00	0.00	0.00	0.00	
736.80	0.00	0.00	736.80	0.00	0.00	0.00	0.00	0.00	
1054.80	6.36	264.10	1054.15	-1.81	-17.54	2.00	264.10	1.78	
6659.48	6.36	264.10	6624.33	-65.63	-635.11	0.00	0.00	64.41	
7652.37	90.00	179.89	7250.00	-702.34	-703.27	9.00	-84.25	700.99	
13800.00	90.00	179.89	7250.00	-6849.97	-691.46	0.00	0.00	6848.63	FAWN 2734-08H_Tgt
13994.50	90.00	176.00	7250.00	-7044.31	-684.49	2.00	-90.00	7042.98	
15700.00	90.00	176.00	7250.00	-8745.65	-565.52	0.00	0.00	8744.55	
16156.90	90.00	185.14	7250.00	-9202.05	-570.05	2.00	90.00	9200.93	
17434.84	90.00	185.14	7250.00	-10474.85	-684.50	0.00	0.00	10473.51	FAWN 2734-08H_BHL

West(-)/East(+) (2200 usft/in)



WELLBORE TARGET DETAILS (LAT/LONG)

Name	TVD	Northing	Easting	Latitude	Longitude
FAWN 2734-08H_SHL	0.00	1255030.90	3237685.91	40.030325	-104.651197
FAWN 2734-08H_LP/TPZ	7250.00	1254321.99	3236989.34	40.028397	-104.653708
FAWN 2734-08H_BPZ	7250.00	1244639.97	3237100.68	40.001816	-104.653641
FAWN 2734-08H_BHL	7250.00	1244549.98	3237101.71	40.001569	-104.653640



WELL DETAILS: FAWN 2734-08H

GL = 5107"

RKB = 20' @ 5127.00usft (RIG)

Plan: Design #1 (FAWN 2734-08H/Plan A)

Date: 7/30/2022

Planning Report

Database:	EDM 5000.16 Single User Db	Local Co-ordinate Reference:	Well FAWN 2734-08H
Company:	VERDAD RESOURCES	TVD Reference:	RKB = 20' @ 5127.00usft (RIG)
Project:	WATTENBERG FIELD	MD Reference:	RKB = 20' @ 5127.00usft (RIG)
Site:	1N-65W-22 FAWN 2734 & 2833 PAD	North Reference:	True
Well:	FAWN 2734-08H	Survey Calculation Method:	Minimum Curvature
Wellbore:	Plan A		
Design:	Design #1		

Project	WATTENBERG FIELD		
Map System:	US State Plane 1983	System Datum:	Mean Sea Level
Geo Datum:	North American Datum 1983		
Map Zone:	Colorado Northern Zone		

Site		1N-65W-22 FAWN 2734 & 2833 PAD				
Site Position:		Northing:	1,255,173.64	usft	Latitude:	40.030719
From:	Lat/Long	Easting:	3,237,589.54	usft	Longitude:	-104.651536
Position Uncertainty:		0.00	usft	Slot Radius:	13-3/16	"

Well		FAWN 2734-08H				
Well Position	+N/-S	0.00 usft	Northing:	1,255,030.90 usft	Latitude:	40.030325
	+E/-W	0.00 usft	Easting:	3,237,685.91 usft	Longitude:	-104.651197
Position Uncertainty		3.28 usft	Wellhead Elevation:	usft	Ground Level:	5,107.00 usft
Grid Convergence:		0.55 °				

Wellbore	Plan A				
Magnetics	Model Name	Sample Date	Declination (°)	Dip Angle (°)	Field Strength (nT)
	IGRF202013	7/27/2022	7.64	66.33	51,651.94520461

Design	Design #1				
Audit Notes:					
Version:		Phase:	PLAN	Tie On Depth:	0.00
Vertical Section:	Depth From (TVD) (usft)	+N/-S (usft)	+E/-W (usft)	Direction (°)	
	0.00	0.00	0.00	179.89	

Plan Survey Tool Program	Date	7/30/2022			
Depth From (usft)	Depth To (usft)	Survey (Wellbore)	Tool Name	Remarks	
1	0.00	2,250.00	Design #1 (Plan A)	ISCWSA MWD	
				Fixed:v2:standard declination	
2	2,250.00	17,434.84	Design #1 (Plan A)	ISCWSA MWD	
				Fixed:v2:standard declination	

Planning Report

Database:	EDM 5000.16 Single User Db	Local Co-ordinate Reference:	Well FAWN 2734-08H
Company:	VERDAD RESOURCES	TVD Reference:	RKB = 20' @ 5127.00usft (RIG)
Project:	WATTENBERG FIELD	MD Reference:	RKB = 20' @ 5127.00usft (RIG)
Site:	1N-65W-22 FAWN 2734 & 2833 PAD	North Reference:	True
Well:	FAWN 2734-08H	Survey Calculation Method:	Minimum Curvature
Wellbore:	Plan A		
Design:	Design #1		

Plan Sections										
Measured Depth (usft)	Inclination (°)	Azimuth (°)	Vertical Depth (usft)	+N/-S (usft)	+E/-W (usft)	Dogleg Rate (°/100usft)	Build Rate (°/100usft)	Turn Rate (°/100usft)	TFO (°)	Target
0.00	0.00	0.00	0.00	0.00	0.00	0.00	0.00	0.00	0.00	
736.80	0.00	0.00	736.80	0.00	0.00	0.00	0.00	0.00	0.00	
1,054.80	6.36	264.10	1,054.15	-1.81	-17.54	2.00	2.00	0.00	264.10	
6,659.48	6.36	264.10	6,624.33	-65.63	-635.11	0.00	0.00	0.00	0.00	
7,652.37	90.00	179.89	7,250.00	-702.34	-703.27	9.00	8.42	-8.48	-84.25	
13,800.00	90.00	179.89	7,250.00	-6,849.97	-691.46	0.00	0.00	0.00	0.00	FAWN 2734-08H_Tgt
13,994.50	90.00	176.00	7,250.00	-7,044.31	-684.49	2.00	0.00	-2.00	-90.00	
15,700.00	90.00	176.00	7,250.00	-8,745.65	-565.52	0.00	0.00	0.00	0.00	
16,156.90	90.00	185.14	7,250.00	-9,202.05	-570.05	2.00	0.00	2.00	90.00	
17,434.84	90.00	185.14	7,250.00	-10,474.85	-684.50	0.00	0.00	0.00	0.00	FAWN 2734-08H_BHI

Planning Report

Database:	EDM 5000.16 Single User Db	Local Co-ordinate Reference:	Well FAWN 2734-08H
Company:	VERDAD RESOURCES	TVD Reference:	RKB = 20' @ 5127.00usft (RIG)
Project:	WATTENBERG FIELD	MD Reference:	RKB = 20' @ 5127.00usft (RIG)
Site:	1N-65W-22 FAWN 2734 & 2833 PAD	North Reference:	True
Well:	FAWN 2734-08H	Survey Calculation Method:	Minimum Curvature
Wellbore:	Plan A		
Design:	Design #1		

Planned Survey									
Measured Depth (usft)	Inclination (°)	Azimuth (°)	Vertical Depth (usft)	+N/-S (usft)	+E/-W (usft)	Vertical Section (usft)	Dogleg Rate (°/100usft)	Build Rate (°/100usft)	Turn Rate (°/100usft)
0.00	0.00	0.00	0.00	0.00	0.00	0.00	0.00	0.00	0.00
100.00	0.00	0.00	100.00	0.00	0.00	0.00	0.00	0.00	0.00
200.00	0.00	0.00	200.00	0.00	0.00	0.00	0.00	0.00	0.00
300.00	0.00	0.00	300.00	0.00	0.00	0.00	0.00	0.00	0.00
400.00	0.00	0.00	400.00	0.00	0.00	0.00	0.00	0.00	0.00
500.00	0.00	0.00	500.00	0.00	0.00	0.00	0.00	0.00	0.00
600.00	0.00	0.00	600.00	0.00	0.00	0.00	0.00	0.00	0.00
700.00	0.00	0.00	700.00	0.00	0.00	0.00	0.00	0.00	0.00
736.80	0.00	0.00	736.80	0.00	0.00	0.00	0.00	0.00	0.00
Begin Nudge @ 736.80ft									
800.00	1.26	264.10	799.99	-0.07	-0.69	0.07	2.00	2.00	0.00
900.00	3.26	264.10	899.91	-0.48	-4.62	0.47	2.00	2.00	0.00
1,000.00	5.26	264.10	999.63	-1.24	-12.02	1.22	2.00	2.00	0.00
1,054.80	6.36	264.10	1,054.15	-1.81	-17.54	1.78	2.00	2.00	0.00
Hold Tangent @ 1054.80ft									
1,100.00	6.36	264.10	1,099.07	-2.33	-22.52	2.28	0.00	0.00	0.00
1,200.00	6.36	264.10	1,198.45	-3.47	-33.54	3.40	0.00	0.00	0.00
1,300.00	6.36	264.10	1,297.84	-4.60	-44.56	4.52	0.00	0.00	0.00
1,400.00	6.36	264.10	1,397.22	-5.74	-55.57	5.64	0.00	0.00	0.00
1,500.00	6.36	264.10	1,496.61	-6.88	-66.59	6.75	0.00	0.00	0.00
1,600.00	6.36	264.10	1,595.99	-8.02	-77.61	7.87	0.00	0.00	0.00
1,700.00	6.36	264.10	1,695.38	-9.16	-88.63	8.99	0.00	0.00	0.00
1,800.00	6.36	264.10	1,794.76	-10.30	-99.65	10.11	0.00	0.00	0.00
1,900.00	6.36	264.10	1,894.15	-11.44	-110.67	11.22	0.00	0.00	0.00
2,000.00	6.36	264.10	1,993.53	-12.58	-121.69	12.34	0.00	0.00	0.00
2,100.00	6.36	264.10	2,092.91	-13.71	-132.71	13.46	0.00	0.00	0.00
2,200.00	6.36	264.10	2,192.30	-14.85	-143.73	14.58	0.00	0.00	0.00
2,258.06	6.36	264.10	2,250.00	-15.51	-150.12	15.23	0.00	0.00	0.00
9 5/8"									
2,300.00	6.36	264.10	2,291.68	-15.99	-154.74	15.69	0.00	0.00	0.00
2,400.00	6.36	264.10	2,391.07	-17.13	-165.76	16.81	0.00	0.00	0.00
2,500.00	6.36	264.10	2,490.45	-18.27	-176.78	17.93	0.00	0.00	0.00
2,600.00	6.36	264.10	2,589.84	-19.41	-187.80	19.05	0.00	0.00	0.00
2,700.00	6.36	264.10	2,689.22	-20.55	-198.82	20.16	0.00	0.00	0.00
2,800.00	6.36	264.10	2,788.61	-21.68	-209.84	21.28	0.00	0.00	0.00
2,900.00	6.36	264.10	2,887.99	-22.82	-220.86	22.40	0.00	0.00	0.00
3,000.00	6.36	264.10	2,987.38	-23.96	-231.88	23.52	0.00	0.00	0.00
3,100.00	6.36	264.10	3,086.76	-25.10	-242.90	24.63	0.00	0.00	0.00
3,200.00	6.36	264.10	3,186.14	-26.24	-253.91	25.75	0.00	0.00	0.00
3,300.00	6.36	264.10	3,285.53	-27.38	-264.93	26.87	0.00	0.00	0.00
3,400.00	6.36	264.10	3,384.91	-28.52	-275.95	27.99	0.00	0.00	0.00
3,500.00	6.36	264.10	3,484.30	-29.66	-286.97	29.10	0.00	0.00	0.00
3,600.00	6.36	264.10	3,583.68	-30.79	-297.99	30.22	0.00	0.00	0.00
3,700.00	6.36	264.10	3,683.07	-31.93	-309.01	31.34	0.00	0.00	0.00
3,800.00	6.36	264.10	3,782.45	-33.07	-320.03	32.46	0.00	0.00	0.00
3,900.00	6.36	264.10	3,881.84	-34.21	-331.05	33.57	0.00	0.00	0.00
4,000.00	6.36	264.10	3,981.22	-35.35	-342.06	34.69	0.00	0.00	0.00
4,100.00	6.36	264.10	4,080.61	-36.49	-353.08	35.81	0.00	0.00	0.00
4,200.00	6.36	264.10	4,179.99	-37.63	-364.10	36.93	0.00	0.00	0.00
4,300.00	6.36	264.10	4,279.37	-38.76	-375.12	38.04	0.00	0.00	0.00
4,400.00	6.36	264.10	4,378.76	-39.90	-386.14	39.16	0.00	0.00	0.00
4,500.00	6.36	264.10	4,478.14	-41.04	-397.16	40.28	0.00	0.00	0.00
4,600.00	6.36	264.10	4,577.53	-42.18	-408.18	41.40	0.00	0.00	0.00

Planning Report

Database:	EDM 5000.16 Single User Db	Local Co-ordinate Reference:	Well FAWN 2734-08H
Company:	VERDAD RESOURCES	TVD Reference:	RKB = 20' @ 5127.00usft (RIG)
Project:	WATTENBERG FIELD	MD Reference:	RKB = 20' @ 5127.00usft (RIG)
Site:	1N-65W-22 FAWN 2734 & 2833 PAD	North Reference:	True
Well:	FAWN 2734-08H	Survey Calculation Method:	Minimum Curvature
Wellbore:	Plan A		
Design:	Design #1		

Planned Survey									
Measured Depth (usft)	Inclination (°)	Azimuth (°)	Vertical Depth (usft)	+N/-S (usft)	+E/-W (usft)	Vertical Section (usft)	Dogleg Rate (°/100usft)	Build Rate (°/100usft)	Turn Rate (°/100usft)
4,700.00	6.36	264.10	4,676.91	-43.32	-419.20	42.51	0.00	0.00	0.00
4,800.00	6.36	264.10	4,776.30	-44.46	-430.22	43.63	0.00	0.00	0.00
4,900.00	6.36	264.10	4,875.68	-45.60	-441.23	44.75	0.00	0.00	0.00
5,000.00	6.36	264.10	4,975.07	-46.74	-452.25	45.87	0.00	0.00	0.00
5,100.00	6.36	264.10	5,074.45	-47.87	-463.27	46.98	0.00	0.00	0.00
5,200.00	6.36	264.10	5,173.84	-49.01	-474.29	48.10	0.00	0.00	0.00
5,300.00	6.36	264.10	5,273.22	-50.15	-485.31	49.22	0.00	0.00	0.00
5,400.00	6.36	264.10	5,372.60	-51.29	-496.33	50.34	0.00	0.00	0.00
5,500.00	6.36	264.10	5,471.99	-52.43	-507.35	51.46	0.00	0.00	0.00
5,600.00	6.36	264.10	5,571.37	-53.57	-518.37	52.57	0.00	0.00	0.00
5,700.00	6.36	264.10	5,670.76	-54.71	-529.38	53.69	0.00	0.00	0.00
5,800.00	6.36	264.10	5,770.14	-55.85	-540.40	54.81	0.00	0.00	0.00
5,900.00	6.36	264.10	5,869.53	-56.98	-551.42	55.93	0.00	0.00	0.00
6,000.00	6.36	264.10	5,968.91	-58.12	-562.44	57.04	0.00	0.00	0.00
6,100.00	6.36	264.10	6,068.30	-59.26	-573.46	58.16	0.00	0.00	0.00
6,200.00	6.36	264.10	6,167.68	-60.40	-584.48	59.28	0.00	0.00	0.00
6,300.00	6.36	264.10	6,267.07	-61.54	-595.50	60.40	0.00	0.00	0.00
6,400.00	6.36	264.10	6,366.45	-62.68	-606.52	61.51	0.00	0.00	0.00
6,500.00	6.36	264.10	6,465.83	-63.82	-617.54	62.63	0.00	0.00	0.00
6,600.00	6.36	264.10	6,565.22	-64.95	-628.55	63.75	0.00	0.00	0.00
6,659.48	6.36	264.10	6,624.33	-65.63	-635.11	64.41	0.00	0.00	0.00
KOP @ 6659.48ft :: DLS = 9°/100'									
6,700.00	7.64	235.67	6,664.56	-67.38	-639.57	66.15	9.00	3.16	-70.17
6,750.00	10.81	215.38	6,713.92	-73.08	-645.03	71.85	9.00	6.35	-40.58
6,800.00	14.69	204.91	6,762.69	-82.66	-650.42	81.41	9.00	7.76	-20.94
6,850.00	18.84	198.85	6,810.55	-96.06	-655.70	94.80	9.00	8.30	-12.12
6,900.00	23.12	194.94	6,857.23	-113.20	-660.84	111.93	9.00	8.56	-7.82
6,950.00	27.47	192.21	6,902.42	-133.97	-665.82	132.69	9.00	8.69	-5.47
7,000.00	31.86	190.17	6,945.86	-158.24	-670.59	156.95	9.00	8.77	-4.07
7,050.00	36.27	188.58	6,987.27	-185.87	-675.12	184.57	9.00	8.82	-3.17
7,100.00	40.70	187.30	7,026.40	-216.68	-679.40	215.37	9.00	8.86	-2.57
7,150.00	45.14	186.23	7,063.01	-250.48	-683.40	249.16	9.00	8.88	-2.14
7,200.00	49.59	185.31	7,096.87	-287.06	-687.08	285.75	9.00	8.90	-1.84
7,250.00	54.04	184.50	7,127.78	-326.21	-690.44	324.89	9.00	8.91	-1.61
7,300.00	58.50	183.79	7,155.53	-367.68	-693.43	366.35	9.00	8.92	-1.44
7,350.00	62.97	183.13	7,179.97	-411.20	-696.06	409.87	9.00	8.93	-1.30
7,400.00	67.43	182.53	7,200.94	-456.53	-698.30	455.19	9.00	8.93	-1.20
7,450.00	71.90	181.97	7,218.30	-503.36	-700.13	502.02	9.00	8.94	-1.13
7,500.00	76.37	181.43	7,231.97	-551.43	-701.56	550.08	9.00	8.94	-1.07
7,550.00	80.84	180.91	7,241.84	-600.42	-702.56	599.07	9.00	8.94	-1.03
7,600.00	85.32	180.41	7,247.86	-650.04	-703.13	648.69	9.00	8.94	-1.01
7,652.37	90.00	179.89	7,250.00	-702.34	-703.27	700.99	9.00	8.95	-0.99
End Build/TPZ @ 7652.37ft									
7,700.00	90.00	179.89	7,250.00	-749.98	-703.18	748.63	0.00	0.00	0.00
7,800.00	90.00	179.89	7,250.00	-849.98	-702.98	848.63	0.00	0.00	0.00
7,900.00	90.00	179.89	7,250.00	-949.98	-702.79	948.63	0.00	0.00	0.00
8,000.00	90.00	179.89	7,250.00	-1,049.98	-702.60	1,048.63	0.00	0.00	0.00
8,100.00	90.00	179.89	7,250.00	-1,149.98	-702.41	1,148.63	0.00	0.00	0.00
8,200.00	90.00	179.89	7,250.00	-1,249.98	-702.22	1,248.63	0.00	0.00	0.00
8,300.00	90.00	179.89	7,250.00	-1,349.98	-702.02	1,348.63	0.00	0.00	0.00
8,400.00	90.00	179.89	7,250.00	-1,449.98	-701.83	1,448.63	0.00	0.00	0.00
8,500.00	90.00	179.89	7,250.00	-1,549.98	-701.64	1,548.63	0.00	0.00	0.00
8,600.00	90.00	179.89	7,250.00	-1,649.98	-701.45	1,648.63	0.00	0.00	0.00
8,700.00	90.00	179.89	7,250.00	-1,749.98	-701.26	1,748.63	0.00	0.00	0.00

Planning Report

Database:	EDM 5000.16 Single User Db	Local Co-ordinate Reference:	Well FAWN 2734-08H
Company:	VERDAD RESOURCES	TVD Reference:	RKB = 20' @ 5127.00usft (RIG)
Project:	WATTENBERG FIELD	MD Reference:	RKB = 20' @ 5127.00usft (RIG)
Site:	1N-65W-22 FAWN 2734 & 2833 PAD	North Reference:	True
Well:	FAWN 2734-08H	Survey Calculation Method:	Minimum Curvature
Wellbore:	Plan A		
Design:	Design #1		

Planned Survey										
Measured Depth (usft)	Inclination (°)	Azimuth (°)	Vertical Depth (usft)	+N/-S (usft)	+E/-W (usft)	Vertical Section (usft)	Dogleg Rate (°/100usft)	Build Rate (°/100usft)	Turn Rate (°/100usft)	
8,800.00	90.00	179.89	7,250.00	-1,849.98	-701.06	1,848.63	0.00	0.00	0.00	
8,900.00	90.00	179.89	7,250.00	-1,949.98	-700.87	1,948.63	0.00	0.00	0.00	
9,000.00	90.00	179.89	7,250.00	-2,049.98	-700.68	2,048.63	0.00	0.00	0.00	
9,100.00	90.00	179.89	7,250.00	-2,149.98	-700.49	2,148.63	0.00	0.00	0.00	
9,200.00	90.00	179.89	7,250.00	-2,249.98	-700.30	2,248.63	0.00	0.00	0.00	
9,300.00	90.00	179.89	7,250.00	-2,349.98	-700.10	2,348.63	0.00	0.00	0.00	
9,400.00	90.00	179.89	7,250.00	-2,449.98	-699.91	2,448.63	0.00	0.00	0.00	
9,500.00	90.00	179.89	7,250.00	-2,549.98	-699.72	2,548.63	0.00	0.00	0.00	
9,600.00	90.00	179.89	7,250.00	-2,649.98	-699.53	2,648.63	0.00	0.00	0.00	
9,700.00	90.00	179.89	7,250.00	-2,749.97	-699.33	2,748.63	0.00	0.00	0.00	
9,800.00	90.00	179.89	7,250.00	-2,849.97	-699.14	2,848.63	0.00	0.00	0.00	
9,900.00	90.00	179.89	7,250.00	-2,949.97	-698.95	2,948.63	0.00	0.00	0.00	
10,000.00	90.00	179.89	7,250.00	-3,049.97	-698.76	3,048.63	0.00	0.00	0.00	
10,100.00	90.00	179.89	7,250.00	-3,149.97	-698.57	3,148.63	0.00	0.00	0.00	
10,200.00	90.00	179.89	7,250.00	-3,249.97	-698.37	3,248.63	0.00	0.00	0.00	
10,300.00	90.00	179.89	7,250.00	-3,349.97	-698.18	3,348.63	0.00	0.00	0.00	
10,400.00	90.00	179.89	7,250.00	-3,449.97	-697.99	3,448.63	0.00	0.00	0.00	
10,500.00	90.00	179.89	7,250.00	-3,549.97	-697.80	3,548.63	0.00	0.00	0.00	
10,600.00	90.00	179.89	7,250.00	-3,649.97	-697.61	3,648.63	0.00	0.00	0.00	
10,700.00	90.00	179.89	7,250.00	-3,749.97	-697.41	3,748.63	0.00	0.00	0.00	
10,800.00	90.00	179.89	7,250.00	-3,849.97	-697.22	3,848.63	0.00	0.00	0.00	
10,900.00	90.00	179.89	7,250.00	-3,949.97	-697.03	3,948.63	0.00	0.00	0.00	
11,000.00	90.00	179.89	7,250.00	-4,049.97	-696.84	4,048.63	0.00	0.00	0.00	
11,100.00	90.00	179.89	7,250.00	-4,149.97	-696.65	4,148.63	0.00	0.00	0.00	
11,200.00	90.00	179.89	7,250.00	-4,249.97	-696.45	4,248.63	0.00	0.00	0.00	
11,300.00	90.00	179.89	7,250.00	-4,349.97	-696.26	4,348.63	0.00	0.00	0.00	
11,400.00	90.00	179.89	7,250.00	-4,449.97	-696.07	4,448.63	0.00	0.00	0.00	
11,500.00	90.00	179.89	7,250.00	-4,549.97	-695.88	4,548.63	0.00	0.00	0.00	
11,600.00	90.00	179.89	7,250.00	-4,649.97	-695.69	4,648.63	0.00	0.00	0.00	
11,700.00	90.00	179.89	7,250.00	-4,749.97	-695.49	4,748.63	0.00	0.00	0.00	
11,800.00	90.00	179.89	7,250.00	-4,849.97	-695.30	4,848.63	0.00	0.00	0.00	
11,900.00	90.00	179.89	7,250.00	-4,949.97	-695.11	4,948.63	0.00	0.00	0.00	
12,000.00	90.00	179.89	7,250.00	-5,049.97	-694.92	5,048.63	0.00	0.00	0.00	
12,100.00	90.00	179.89	7,250.00	-5,149.97	-694.73	5,148.63	0.00	0.00	0.00	
12,200.00	90.00	179.89	7,250.00	-5,249.97	-694.53	5,248.63	0.00	0.00	0.00	
12,300.00	90.00	179.89	7,250.00	-5,349.97	-694.34	5,348.63	0.00	0.00	0.00	
12,400.00	90.00	179.89	7,250.00	-5,449.97	-694.15	5,448.63	0.00	0.00	0.00	
12,500.00	90.00	179.89	7,250.00	-5,549.97	-693.96	5,548.63	0.00	0.00	0.00	
12,600.00	90.00	179.89	7,250.00	-5,649.97	-693.76	5,648.63	0.00	0.00	0.00	
12,700.00	90.00	179.89	7,250.00	-5,749.97	-693.57	5,748.63	0.00	0.00	0.00	
12,800.00	90.00	179.89	7,250.00	-5,849.97	-693.38	5,848.63	0.00	0.00	0.00	
12,900.00	90.00	179.89	7,250.00	-5,949.97	-693.19	5,948.63	0.00	0.00	0.00	
13,000.00	90.00	179.89	7,250.00	-6,049.97	-693.00	6,048.63	0.00	0.00	0.00	
13,100.00	90.00	179.89	7,250.00	-6,149.97	-692.80	6,148.63	0.00	0.00	0.00	
13,200.00	90.00	179.89	7,250.00	-6,249.97	-692.61	6,248.63	0.00	0.00	0.00	
13,300.00	90.00	179.89	7,250.00	-6,349.97	-692.42	6,348.63	0.00	0.00	0.00	
13,400.00	90.00	179.89	7,250.00	-6,449.97	-692.23	6,448.63	0.00	0.00	0.00	
13,500.00	90.00	179.89	7,250.00	-6,549.97	-692.04	6,548.63	0.00	0.00	0.00	
13,600.00	90.00	179.89	7,250.00	-6,649.97	-691.84	6,648.63	0.00	0.00	0.00	
13,700.00	90.00	179.89	7,250.00	-6,749.97	-691.65	6,748.63	0.00	0.00	0.00	
13,800.00	90.00	179.89	7,250.00	-6,849.97	-691.46	6,848.63	0.00	0.00	0.00	
Begin Turn for AC @ 13800.00ft										
13,900.00	90.00	177.89	7,250.00	-6,949.94	-689.52	6,948.61	2.00	0.00	-2.00	
13,994.50	90.00	176.00	7,250.00	-7,044.31	-684.49	7,042.98	2.00	0.00	-2.00	

Planning Report

Database:	EDM 5000.16 Single User Db	Local Co-ordinate Reference:	Well FAWN 2734-08H
Company:	VERDAD RESOURCES	TVD Reference:	RKB = 20' @ 5127.00usft (RIG)
Project:	WATTENBERG FIELD	MD Reference:	RKB = 20' @ 5127.00usft (RIG)
Site:	1N-65W-22 FAWN 2734 & 2833 PAD	North Reference:	True
Well:	FAWN 2734-08H	Survey Calculation Method:	Minimum Curvature
Wellbore:	Plan A		
Design:	Design #1		

Planned Survey									
Measured Depth (usft)	Inclination (°)	Azimuth (°)	Vertical Depth (usft)	+N/-S (usft)	+E/-W (usft)	Vertical Section (usft)	Dogleg Rate (°/100usft)	Build Rate (°/100usft)	Turn Rate (°/100usft)
End Turn @ 13994.50ft									
14,000.00	90.00	176.00	7,250.00	-7,049.79	-684.10	7,048.47	0.00	0.00	0.00
14,100.00	90.00	176.00	7,250.00	-7,149.55	-677.13	7,148.23	0.00	0.00	0.00
14,200.00	90.00	176.00	7,250.00	-7,249.30	-670.15	7,248.00	0.00	0.00	0.00
14,300.00	90.00	176.00	7,250.00	-7,349.06	-663.18	7,347.77	0.00	0.00	0.00
14,400.00	90.00	176.00	7,250.00	-7,448.82	-656.20	7,447.54	0.00	0.00	0.00
14,500.00	90.00	176.00	7,250.00	-7,548.57	-649.22	7,547.31	0.00	0.00	0.00
14,600.00	90.00	176.00	7,250.00	-7,648.33	-642.25	7,647.08	0.00	0.00	0.00
14,700.00	90.00	176.00	7,250.00	-7,748.09	-635.27	7,746.85	0.00	0.00	0.00
14,800.00	90.00	176.00	7,250.00	-7,847.84	-628.30	7,846.62	0.00	0.00	0.00
14,900.00	90.00	176.00	7,250.00	-7,947.60	-621.32	7,946.39	0.00	0.00	0.00
15,000.00	90.00	176.00	7,250.00	-8,047.36	-614.35	8,046.16	0.00	0.00	0.00
15,100.00	90.00	176.00	7,250.00	-8,147.11	-607.37	8,145.93	0.00	0.00	0.00
15,200.00	90.00	176.00	7,250.00	-8,246.87	-600.40	8,245.70	0.00	0.00	0.00
15,300.00	90.00	176.00	7,250.00	-8,346.62	-593.42	8,345.47	0.00	0.00	0.00
15,400.00	90.00	176.00	7,250.00	-8,446.38	-586.44	8,445.24	0.00	0.00	0.00
15,500.00	90.00	176.00	7,250.00	-8,546.14	-579.47	8,545.01	0.00	0.00	0.00
15,600.00	90.00	176.00	7,250.00	-8,645.89	-572.49	8,644.78	0.00	0.00	0.00
15,700.00	90.00	176.00	7,250.00	-8,745.65	-565.52	8,744.55	0.00	0.00	0.00
Begin Turn to BHL @ 15700.00ft									
15,800.00	90.00	178.00	7,250.00	-8,845.51	-560.28	8,844.42	2.00	0.00	2.00
15,900.00	90.00	180.00	7,250.00	-8,945.49	-558.54	8,944.40	2.00	0.00	2.00
16,000.00	90.00	182.00	7,250.00	-9,045.47	-560.28	9,044.38	2.00	0.00	2.00
16,100.00	90.00	184.00	7,250.00	-9,145.33	-565.52	9,144.22	2.00	0.00	2.00
16,156.90	90.00	185.14	7,250.00	-9,202.05	-570.05	9,200.93	2.00	0.00	2.00
End Turn @ 16156.90ft									
16,200.00	90.00	185.14	7,250.00	-9,244.97	-573.91	9,243.85	0.00	0.00	0.00
16,300.00	90.00	185.14	7,250.00	-9,344.57	-582.87	9,343.43	0.00	0.00	0.00
16,400.00	90.00	185.14	7,250.00	-9,444.17	-591.82	9,443.01	0.00	0.00	0.00
16,500.00	90.00	185.14	7,250.00	-9,543.77	-600.78	9,542.59	0.00	0.00	0.00
16,600.00	90.00	185.14	7,250.00	-9,643.36	-609.73	9,642.18	0.00	0.00	0.00
16,700.00	90.00	185.14	7,250.00	-9,742.96	-618.69	9,741.76	0.00	0.00	0.00
16,800.00	90.00	185.14	7,250.00	-9,842.56	-627.64	9,841.34	0.00	0.00	0.00
16,900.00	90.00	185.14	7,250.00	-9,942.16	-636.60	9,940.92	0.00	0.00	0.00
17,000.00	90.00	185.14	7,250.00	-10,041.76	-645.55	10,040.50	0.00	0.00	0.00
17,100.00	90.00	185.14	7,250.00	-10,141.35	-654.51	10,140.08	0.00	0.00	0.00
17,200.00	90.00	185.14	7,250.00	-10,240.95	-663.46	10,239.66	0.00	0.00	0.00
17,300.00	90.00	185.14	7,250.00	-10,340.55	-672.42	10,339.24	0.00	0.00	0.00
17,344.48	90.00	185.14	7,250.00	-10,384.85	-676.40	10,383.53	0.00	0.00	0.00
BPZ @ 17344.48ft									
17,400.00	90.00	185.14	7,250.00	-10,440.15	-681.38	10,438.82	0.00	0.00	0.00
17,434.84	90.00	185.14	7,250.00	-10,474.85	-684.50	10,473.51	0.00	0.00	0.00
TD Well @ 17434.84ft									

Casing Points				
Measured Depth (usft)	Vertical Depth (usft)	Name	Casing Diameter (")	Hole Diameter (")
2,258.06	2,250.00	9 5/8"	9-5/8	13-1/2

Planning Report

Database:	EDM 5000.16 Single User Db	Local Co-ordinate Reference:	Well FAWN 2734-08H
Company:	VERDAD RESOURCES	TVD Reference:	RKB = 20' @ 5127.00usft (RIG)
Project:	WATTENBERG FIELD	MD Reference:	RKB = 20' @ 5127.00usft (RIG)
Site:	1N-65W-22 FAWN 2734 & 2833 PAD	North Reference:	True
Well:	FAWN 2734-08H	Survey Calculation Method:	Minimum Curvature
Wellbore:	Plan A		
Design:	Design #1		

Plan Annotations				
Measured Depth (usft)	Vertical Depth (usft)	Local Coordinates		Comment
		+N/-S (usft)	+E/-W (usft)	
736.80	736.80	0.00	0.00	Begin Nudge @ 736.80ft
1,054.80	1,054.15	-1.81	-17.54	Hold Tangent @ 1054.80ft
6,659.48	6,624.33	-65.63	-635.11	KOP @ 6659.48ft :: DLS = 9°/100'
7,652.37	7,250.00	-702.34	-703.27	End Build/TPZ @ 7652.37ft
13,800.00	7,250.00	-6,849.97	-691.46	Begin Turn for AC @ 13800.00ft
13,994.50	7,250.00	-7,044.31	-684.49	End Turn @ 13994.50ft
15,700.00	7,250.00	-8,745.65	-565.52	Begin Turn to BHL @ 15700.00ft
16,156.90	7,250.00	-9,202.05	-570.05	End Turn @ 16156.90ft
17,344.48	7,250.00	-10,384.85	-676.40	BPZ @ 17344.48ft
17,434.84	7,250.00	-10,474.85	-684.50	TD Well @ 17434.84ft