

LEGEND

- COUNTY LINE
- - - SECTION LINE
- - - - QUARTER SECTION LINE
- - - - - SIXTEENTH SECTION LINE
- POINT OF INTERSECTION
- MONUMENT FOUND
- ⊙ CALCULATED CORNER

POINT	NAD 83		NAD 27	
SURFACE HOLE LOCATION	N:	1255030.57	N:	255033.43
	E:	3237637.91	E:	2237789.85
	LAT:	N40.0303250	LAT:	N40.0303417
	LONG:	W104.6513682	LONG:	W104.6508477
LANDING POINT LOCATION	N:	1254311.4	N:	254314.25
	E:	3235428.67	E:	2235580.66
	LAT:	N40.0284086	LAT:	N40.0284253
	LONG:	W104.6592815	LONG:	W104.6587606
BOTTOM OF PRODUCTION ZONE	N:	1244622.06	N:	244625.01
	E:	3235536.69	E:	2235688.77
	LAT:	N40.0018080	LAT:	N40.0018245
	LONG:	W104.6592238	LONG:	W104.6587028
BOTTOM HOLE LOCATION	N:	1244532.07	N:	244535.01
	E:	3235537.70	E:	2235689.77
	LAT:	N40.0015609	LAT:	N40.0015774
	LONG:	W104.6592233	LONG:	W104.6587023



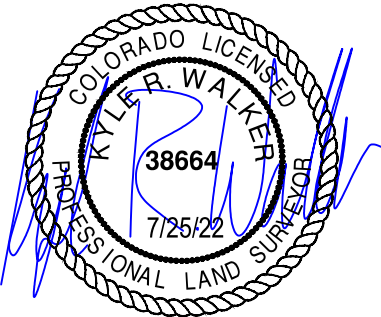
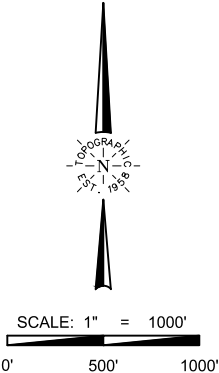
TOPOGRAPHIC

LOYALTY INNOVATION LEGACY

520 Stacy Court Ste B, Lafayette, CO 80026  
303.666.0379 www.topographic.com

SURVEYOR'S STATEMENT  
THE UNDERSIGNED HEREBY STATES THAT THE WELL LOCATION SHOWN HEREON WAS STAKED ON THE GROUND BASED ON EXISTING MONUMENTATION AND/OR PHYSICAL EVIDENCE FOUND IN THE FIELD AND IS CORRECT TO THE BEST OF MY KNOWLEDGE, INFORMATION AND BELIEF.

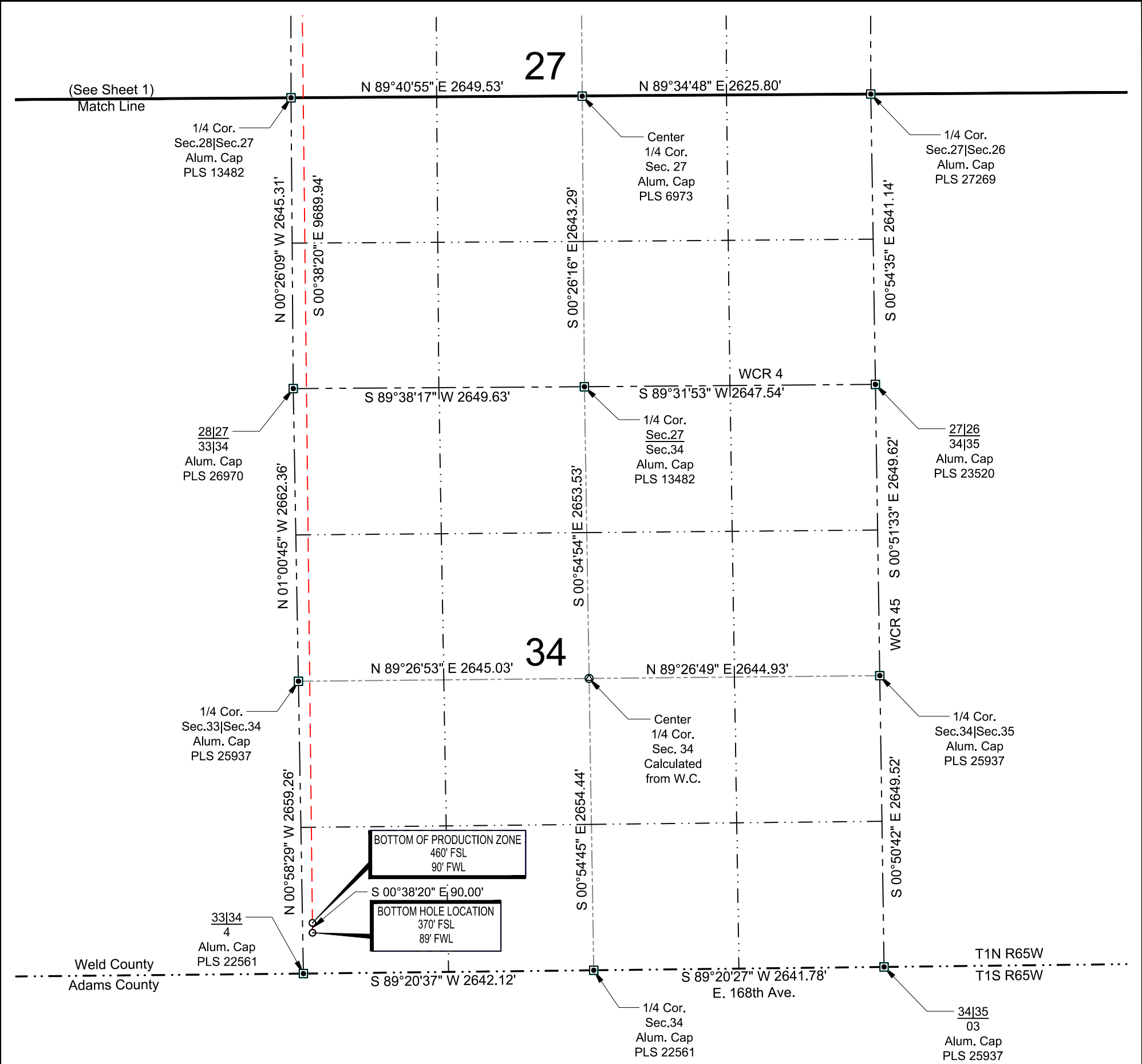
- NOTES
- HORIZONTAL (NAD 83) AND VERTICAL (NAVD 88) DATUM IS BASED ON THE TRIMBLE VRS NETWORK. THE LINEAL UNITS OF MEASUREMENT ARE U.S. SURVEY FEET.
  - ALL DIRECTIONS, DISTANCES, AND DIMENSIONS SHOWN HEREON ARE BASED ON COORDINATES FROM THE "COLORADO COORDINATE SYSTEM OF 1983 NORTH ZONE" (TITLE 38, ARTICLE 52 C.R.S.).
  - ALL SECTION LINE DIMENSIONS SHOWN HEREON ARE BASED ON FIELD MEASUREMENTS OF EXISTING MONUMENTS AND/OR PHYSICAL EVIDENCE FOUND IN THE FIELD UNLESS OTHERWISE INDICATED.
  - PHYSICAL FEATURES SHOWN HEREON ARE FOR GRAPHICAL REPRESENTATION ONLY.
  - SEE FORM 2A FOR VISIBLE IMPROVEMENTS WITHIN 500' OF WELLHEAD.
  - DISTANCES TO NEAREST SECTION LINES ARE MEASURED PERPENDICULARLY.
  - THIS IS NOT A LAND SURVEY NOR LAND SURVEY PLAT.
- PDOP READING: 1.5 INSTRUMENT OPERATOR: TAYLOR ONLEY.



VERDAD RESOURCES  
FAWN 2734 05H

FIELD	05/05/2021	DRAFT	SW
REV 1	07/25/2022	CHECK	ZAK
SHEET : 1 OF 2		JOB: 141441	

WELL LOCATION MAP  
S.H.L. SE/4 SW/4, SECTION 22 T1N R65W 6TH PM  
LP NW/4 NW/4, SECTION 27 T1N R65W 6TH PM  
BPZ SW/4 SW/4, SECTION 34 T1N R65W 6TH PM  
BHL SW/4 SW/4, SECTION 34 T1N R65W 6TH PM  
WELD COUNTY, COLORADO



LEGEND

- COUNTY LINE
- SECTION LINE
- QUARTER SECTION LINE
- SIXTEENTH SECTION LINE
- POINT OF INTERSECTION
- MONUMENT FOUND
- ⊙ CALCULATED CORNER

POINT	NAD 83		NAD 27	
SURFACE HOLE LOCATION	N:	1255030.57	N:	255033.43
	E:	3237637.91	E:	2237789.85
	LAT:	N40.0303250	LAT:	N40.0303417
	LONG:	W104.6513682	LONG:	W104.6508477
LANDING POINT LOCATION	N:	1254311.4	N:	254314.25
	E:	3235428.67	E:	2235580.66
	LAT:	N40.0284086	LAT:	N40.0284253
	LONG:	W104.6592815	LONG:	W104.6587606
BOTTOM OF PRODUCTION ZONE	N:	1244622.06	N:	244625.01
	E:	3235536.69	E:	2235688.77
	LAT:	N40.0018080	LAT:	N40.0018245
	LONG:	W104.6592238	LONG:	W104.6587028
BOTTOM HOLE LOCATION	N:	1244532.07	N:	244535.01
	E:	3235537.70	E:	2235689.77
	LAT:	N40.0015609	LAT:	N40.0015774
	LONG:	W104.6592233	LONG:	W104.6587023

TOPOGRAPHIC

LOYALTY INNOVATION LEGACY

520 Stacy Court Ste B, Lafayette, CO 80026  
303.666.0379 www.topographic.com

**SURVEYOR'S STATEMENT**  
THE UNDERSIGNED HEREBY STATES THAT THE WELL LOCATION SHOWN HEREON WAS STAKED ON THE GROUND BASED ON EXISTING MONUMENTATION AND/OR PHYSICAL EVIDENCE FOUND IN THE FIELD AND IS CORRECT TO THE BEST OF MY KNOWLEDGE, INFORMATION AND BELIEF.

- NOTES**
- HORIZONTAL (NAD 83) AND VERTICAL (NAVD 88) DATUM IS BASED ON THE TRIMBLE VRS NETWORK. THE LINEAL UNITS OF MEASUREMENT ARE U.S. SURVEY FEET.
  - ALL DIRECTIONS, DISTANCES, AND DIMENSIONS SHOWN HEREON ARE BASED ON COORDINATES FROM THE "COLORADO COORDINATE SYSTEM OF 1983 NORTH ZONE" (TITLE 38, ARTICLE 52 C.R.S.).
  - ALL SECTION LINE DIMENSIONS SHOWN HEREON ARE BASED ON FIELD MEASUREMENTS OF EXISTING MONUMENTS AND/OR PHYSICAL EVIDENCE FOUND IN THE FIELD UNLESS OTHERWISE INDICATED.
  - PHYSICAL FEATURES SHOWN HEREON ARE FOR GRAPHICAL REPRESENTATION ONLY.
  - SEE FORM 2A FOR VISIBLE IMPROVEMENTS WITHIN 500' OF WELLHEAD.
  - DISTANCES TO NEAREST SECTION LINES ARE MEASURED PERPENDICULARLY.
  - THIS IS NOT A LAND SURVEY NOR LAND SURVEY PLAT.
- PDOP READING: 1.5 INSTRUMENT OPERATOR: TAYLOR ONLEY.

SCALE: 1" = 1000'  
0' 500' 1000'

VERDAD RESOURCES FAWN 2734 05H			
FIELD	05/05/2021	DRAFT	SW
REV 1	07/25/2022	CHECK	ZAK
SHEET : 2 OF 2		JOB: 141441	

**WELL LOCATION MAP**  
S.H.L. SE/4 SW/4, SECTION 22 T1N R65W 6TH PM  
LP NW/4 NW/4, SECTION 27 T1N R65W 6TH PM  
BPZ SW/4 SW/4, SECTION 34 T1N R65W 6TH PM  
BHL SW/4 SW/4, SECTION 34 T1N R65W 6TH PM  
WELD COUNTY, COLORADO