

LEGEND

- COUNTY LINE
- - - SECTION LINE
- - - QUARTER SECTION LINE
- - - SIXTEENTH SECTION LINE
- POINT OF INTERSECTION
- MONUMENT FOUND
- ⊙ CALCULATED CORNER

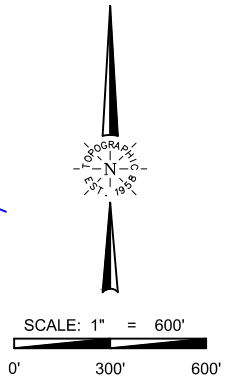
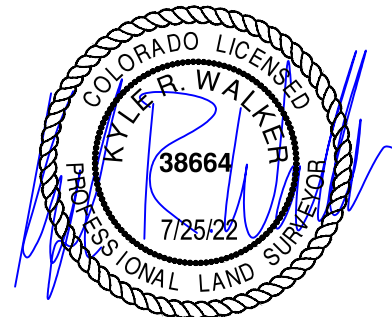


SURVEYOR'S STATEMENT

THE UNDERSIGNED HEREBY STATES THAT THE WELL LOCATION SHOWN HEREON WAS STAKED ON THE GROUND BASED ON EXISTING MONUMENTATION AND/OR PHYSICAL EVIDENCE FOUND IN THE FIELD AND IS CORRECT TO THE BEST OF MY KNOWLEDGE, INFORMATION AND BELIEF.

NOTES

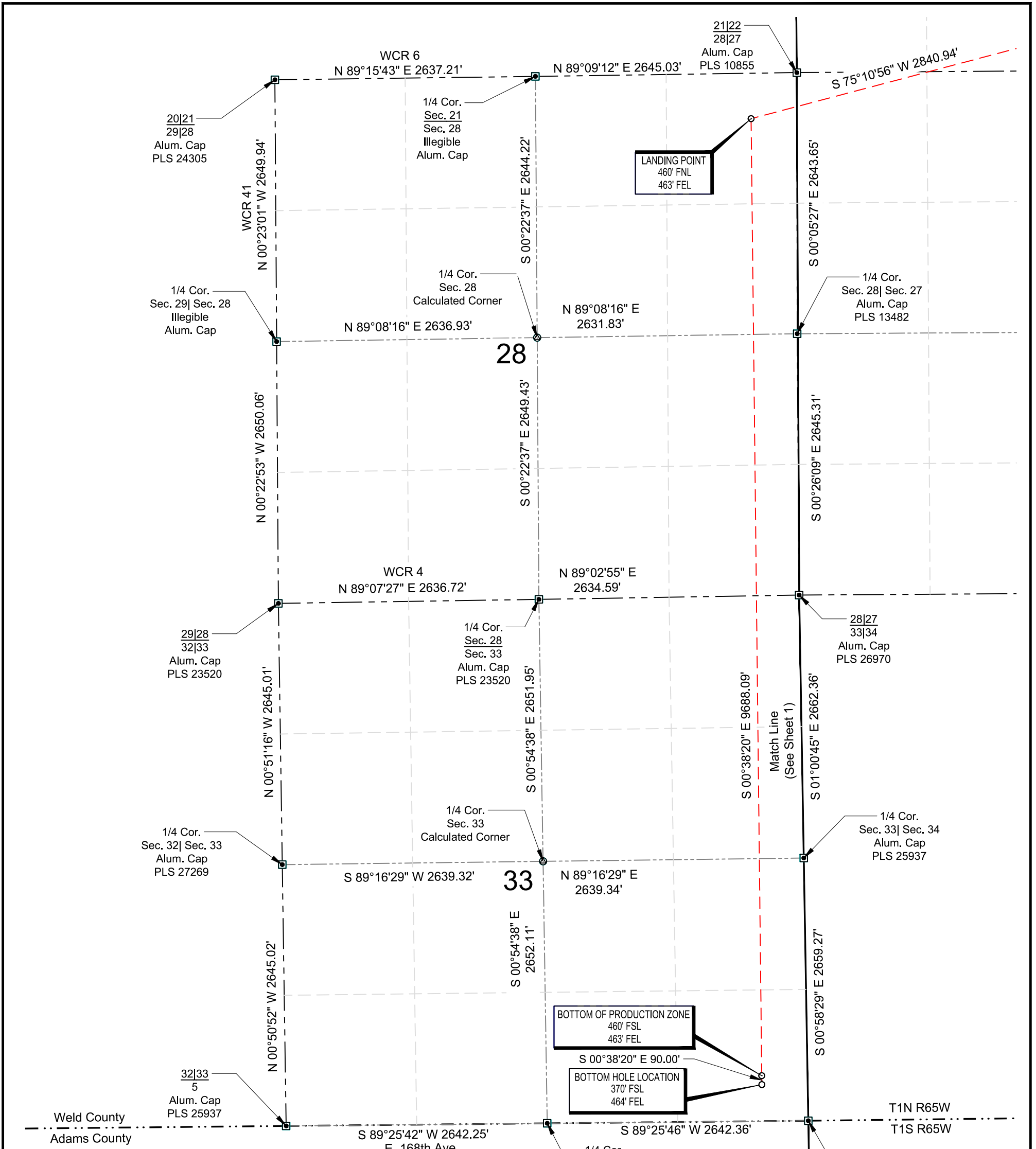
1. HORIZONTAL (NAD 83) AND VERTICAL (NAVD 88) DATUM IS BASED ON THE TRIMBLE VRS NETWORK. THE LINEAL UNITS OF MEASUREMENT ARE U.S. SURVEY FEET.
 2. ALL DIRECTIONS, DISTANCES, AND DIMENSIONS SHOWN HEREON ARE BASED ON COORDINATES FROM THE "COLORADO COORDINATE SYSTEM OF 1983 NORTH ZONE" (TITLE 38, ARTICLE 52 C.R.S.).
 3. ALL SECTION LINE DIMENSIONS SHOWN HEREON ARE BASED ON FIELD MEASUREMENTS OF EXISTING MONUMENTS AND/OR PHYSICAL EVIDENCE FOUND IN THE FIELD UNLESS OTHERWISE INDICATED.
 4. PHYSICAL FEATURES SHOWN HEREON ARE FOR GRAPHICAL REPRESENTATION ONLY.
 5. SEE FORM 2A FOR VISIBLE IMPROVEMENTS WITHIN 500' OF WELLHEAD.
 6. DISTANCES TO NEAREST SECTION LINES ARE MEASURED PERPENDICULARLY.
 7. THIS IS NOT A LAND SURVEY NOR LAND SURVEY PLAT.
- PDOP READING: 1.5 INSTRUMENT OPERATOR: TAYLOR ONLEY.



**VERDAD RESOURCES
FAWN 2833 04H**

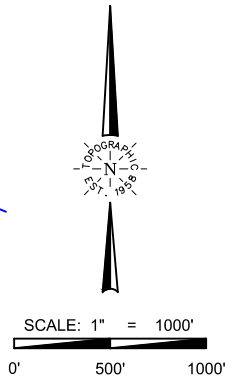
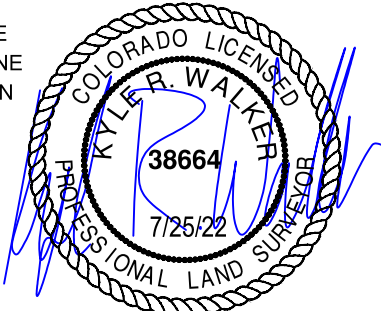
FIELD	05/05/2021	DRAFT	SW
REV 1	07/25/2022	CHECK	ZAK
SHEET :	1 OF 2		
JOB:	142264		

WELL LOCATION MAP
 S.H.L. SE/4 SW/4, SECTION 22 T1N R65W 6TH PM
 LP NE/4 NE/4, SECTION 28 T1N R65W 6TH PM
 BPZ SE/4 SE/4, SECTION 33 T1N R65W 6TH PM
 BHL SE/4 SE/4, SECTION 33 T1N R65W 6TH PM
 WELD COUNTY, COLORADO



POINT	NAD 83	NAD 27
SURFACE HOLE LOCATION	N: 1255030.46	N: 255033.32
	E: 3237621.91	E: 2237773.85
	LAT: 40.0303251	LAT: N40.0303418
	LONG: W104.6514253	LONG: W104.6509048
LANDING POINT LOCATION	N: 1254303.91	N: 254306.75
	E: 3234875.45	E: 2235027.45
	LAT: N40.0284024	LAT: N40.0284191
	LONG: W104.6612572	LONG: W104.6607362
BOTTOM OF PRODUCTION ZONE	N: 1244616.42	N: 244619.37
	E: 3234983.47	E: 2235135.56
	LAT: N40.0018069	LAT: N40.0018234
	LONG: W104.6611987	LONG: W104.6606776
BOTTOM HOLE LOCATION	N: 1244526.43	N: 244529.38
	E: 3234984.48	E: 2235136.57
	LAT: N40.0015598	LAT: N40.0015763
	LONG: W104.6611981	LONG: W104.6606771

- LEGEND**
- COUNTY LINE
 - SECTION LINE
 - QUARTER SECTION LINE
 - SIXTEENTH SECTION LINE
 - POINT OF INTERSECTION
 - MONUMENT FOUND
 - ⊙ CALCULATED CORNER



TOPOGRAPHIC
LOYALTY INNOVATION LEGACY
520 Stacy Court Ste B, Lafayette, CO 80026
303.666.0379 www.topographic.com

SURVEYOR'S STATEMENT
THE UNDERSIGNED HEREBY STATES THAT THE WELL LOCATION SHOWN HEREON WAS STAKED ON THE GROUND BASED ON EXISTING MONUMENTATION AND/OR PHYSICAL EVIDENCE FOUND IN THE FIELD AND IS CORRECT TO THE BEST OF MY KNOWLEDGE, INFORMATION AND BELIEF.

- NOTES**
- HORIZONTAL (NAD 83) AND VERTICAL (NAVD 88) DATUM IS BASED ON THE TRIMBLE VRS NETWORK. THE LINEAL UNITS OF MEASUREMENT ARE U.S. SURVEY FEET.
 - ALL DIRECTIONS, DISTANCES, AND DIMENSIONS SHOWN HEREON ARE BASED ON COORDINATES FROM THE "COLORADO COORDINATE SYSTEM OF 1983 NORTH ZONE" (TITLE 38, ARTICLE 52 C.R.S.).
 - ALL SECTION LINE DIMENSIONS SHOWN HEREON ARE BASED ON FIELD MEASUREMENTS OF EXISTING MONUMENTS AND/OR PHYSICAL EVIDENCE FOUND IN THE FIELD UNLESS OTHERWISE INDICATED.
 - PHYSICAL FEATURES SHOWN HEREON ARE FOR GRAPHICAL REPRESENTATION ONLY.
 - SEE FORM 2A FOR VISIBLE IMPROVEMENTS WITHIN 500' OF WELLHEAD.
 - DISTANCES TO NEAREST SECTION LINES ARE MEASURED PERPENDICULARLY.
 - THIS IS NOT A LAND SURVEY NOR LAND SURVEY PLAT.
 - PDOP READING: 1.5 INSTRUMENT OPERATOR: TAYLOR ONLEY.

WELL LOCATION MAP
S.H.L. SE/4 SW/4, SECTION 22 T1N R65W 6TH PM
LP NE/4 NE/4, SECTION 28 T1N R65W 6TH PM
BPZ SE/4 SE/4, SECTION 33 T1N R65W 6TH PM
BHL SE/4 SE/4, SECTION 33 T1N R65W 6TH PM
WELD COUNTY, COLORADO

VERDAD RESOURCES
FAWN 2833 04H

FIELD	05/05/2021	DRAFT	SW
REV 1	07/25/2022	CHECK	ZAK
SHEET :	2 OF 2		
JOB:	142264		