

# **VERDAD RESOURCES**

**WATTENBERG FIELD**

**1N-65W-22 FAWN 2734 & 2833 PAD**

**FAWN 2833-02H**

**Plan A**

**Plan: Design #1**

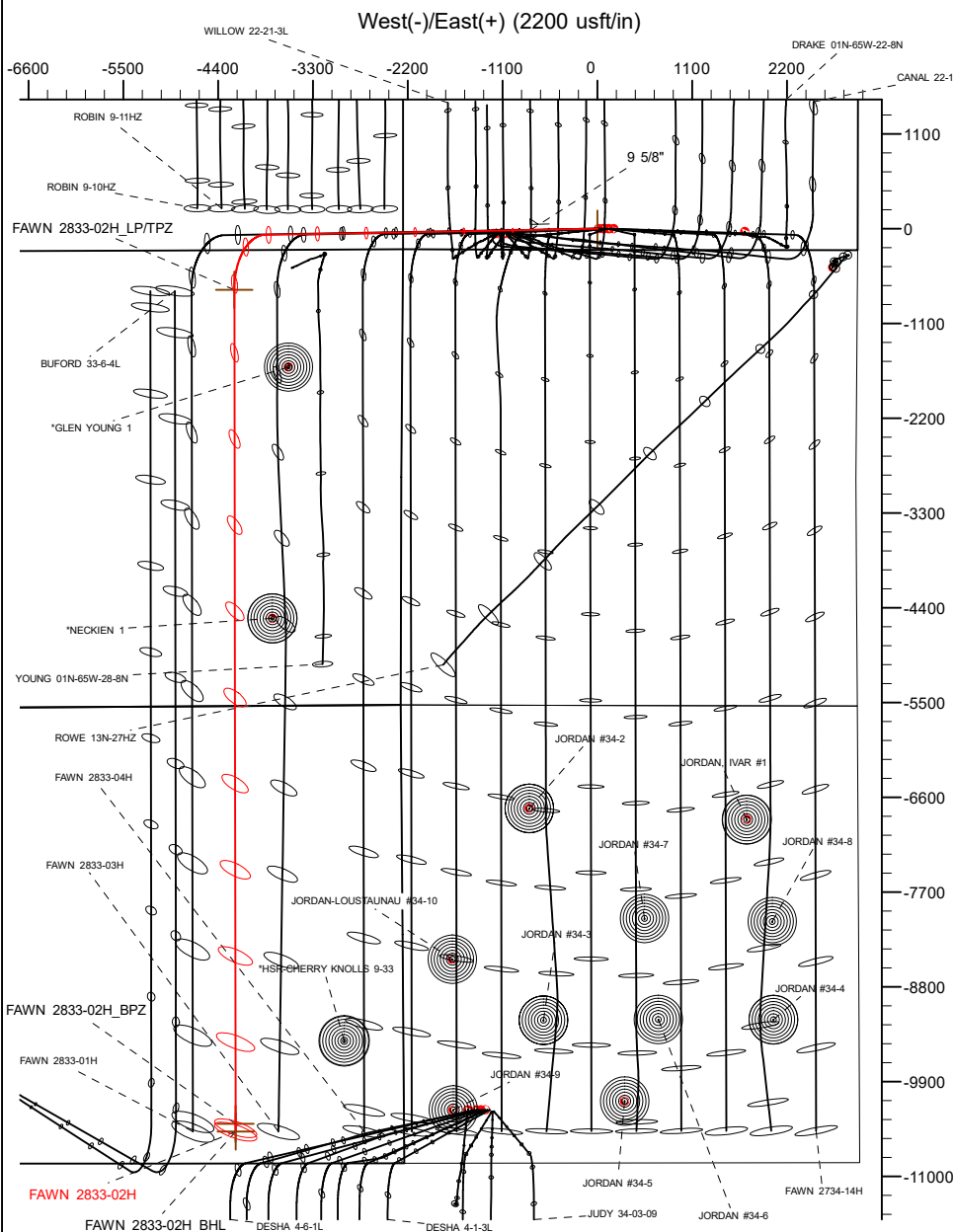
## **Standard Planning Report**

**30 July, 2022**

# VERDAD RESOURCES

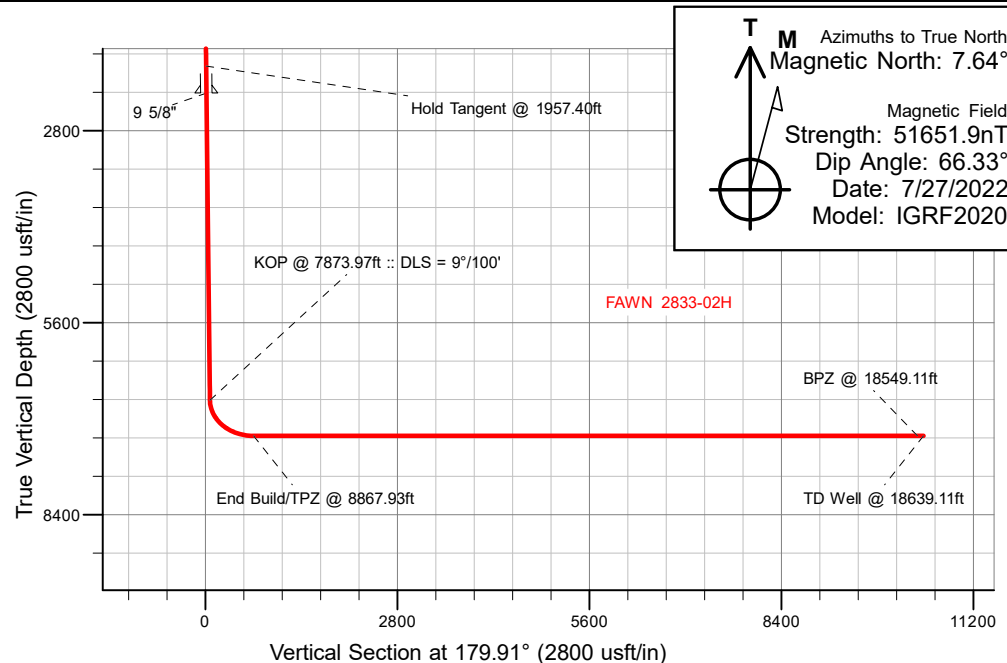
CASING DETAILS			
TVD	MD	Name	Size
2250.00	2436.82	9 5/8"	9-5/8

SHL	LP/TPZ	BPZ	BHL
244' FSL	460' FNL	460' FSL	370' FSL
2254' FWL	1954' FEL	1954' FEL	1954' FEL



SECTION DETAILS									
MD	Inc	Azi	TVD	+N/-S	+E/-W	Dleg	TFace	VSect	Target
0.00	0.00	0.00	0.00	0.00	0.00	0.00	0.00	0.00	
231.90	0.00	0.00	231.90	0.00	0.00	0.00	0.00	0.00	
1957.40	34.51	268.95	1854.95	-9.24	-504.04	2.00	268.95	8.45	
7873.97	34.51	268.95	6730.36	-70.66	-3855.51	0.00	0.00	64.61	
8867.93	90.00	179.91	7250.00	-707.82	-4211.72	9.00	-89.21	701.20	
18639.11	90.00	179.91	7250.00	-10478.99	-4196.28	0.00	0.00	10472.38	FAWN 2833-02H BHL

WELLBORE TARGET DETAILS (LAT/LONG)					
Name	TVD	Northing	Easting	Latitude	Longitude
FAWN 2833-02H_SHL	0.00	1255030.25	3237589.91	40.030325	-104.651540
FAWN 2833-02H_LP/TPZ	7250.00	1254281.88	3233385.06	40.028380	-104.666580
FAWN 2833-02H_BPZ	7250.00	1244601.58	3233493.09	40.001805	-104.666519
FAWN 2833-02H_BHL	7250.00	1244511.59	3233494.09	40.001558	-104.666518



WELL DETAILS: FAWN 2833-02H
GL = 5107'
RKB = 20' @ 5127.00usft (RIG)
Plan: Design #1 (FAWN 2833-02H/Plan A)
Date: 7/30/2022

## Planning Report

<b>Database:</b>	EDM 5000.16 Single User Db	<b>Local Co-ordinate Reference:</b>	Well FAWN 2833-02H
<b>Company:</b>	VERDAD RESOURCES	<b>TVD Reference:</b>	RKB = 20' @ 5127.00usft (RIG)
<b>Project:</b>	WATTENBERG FIELD	<b>MD Reference:</b>	RKB = 20' @ 5127.00usft (RIG)
<b>Site:</b>	1N-65W-22 FAWN 2734 & 2833 PAD	<b>North Reference:</b>	True
<b>Well:</b>	FAWN 2833-02H	<b>Survey Calculation Method:</b>	Minimum Curvature
<b>Wellbore:</b>	Plan A		
<b>Design:</b>	Design #1		

<b>Project</b>	WATTENBERG FIELD		
<b>Map System:</b>	US State Plane 1983	<b>System Datum:</b>	Mean Sea Level
<b>Geo Datum:</b>	North American Datum 1983		
<b>Map Zone:</b>	Colorado Northern Zone		

Site		1N-65W-22 FAWN 2734 & 2833 PAD				
Site Position:		Northing:	1,255,173.64	usft	Latitude:	40.030719
From:	Lat/Long	Easting:	3,237,589.54	usft	Longitude:	-104.651536
Position Uncertainty:	0.00	usft	Slot Radius:	13-3/16	"	

Well		FAWN 2833-02H				
Well Position	+N/-S	0.00 usft	Northing:	1,255,030.25 usft	Latitude:	40.030325
	+E/-W	0.00 usft	Easting:	3,237,589.91 usft	Longitude:	-104.651540
Position Uncertainty		3.28 usft	Wellhead Elevation:	usft	Ground Level:	5,107.00 usft
Grid Convergence:		0.55 °				

<b>Wellbore</b>	Plan A				
<b>Magnetics</b>	<b>Model Name</b>	<b>Sample Date</b>	<b>Declination (°)</b>	<b>Dip Angle (°)</b>	<b>Field Strength (nT)</b>
	IGRF202013	7/27/2022	7.64	66.33	51,651.91015879

<b>Design</b>	Design #1				
<b>Audit Notes:</b>					
<b>Version:</b>		<b>Phase:</b>	PLAN	<b>Tie On Depth:</b>	0.00
<b>Vertical Section:</b>	<b>Depth From (TVD) (usft)</b>	<b>+N/-S (usft)</b>	<b>+E/-W (usft)</b>	<b>Direction (°)</b>	
	0.00	0.00	0.00	179.91	

<b>Plan Survey Tool Program</b>		<b>Date</b>	7/30/2022		
<b>Depth From (usft)</b>	<b>Depth To (usft)</b>	<b>Survey (Wellbore)</b>	<b>Tool Name</b>	<b>Remarks</b>	
1	0.00	2,250.00	Design #1 (Plan A)	ISCWSA MWD	
				Fixed:v2:standard declination	
2	2,250.00	18,639.11	Design #1 (Plan A)	ISCWSA MWD	
				Fixed:v2:standard declination	

Planning Report

Database:	EDM 5000.16 Single User Db	Local Co-ordinate Reference:	Well FAWN 2833-02H
Company:	VERDAD RESOURCES	TVD Reference:	RKB = 20' @ 5127.00usft (RIG)
Project:	WATTENBERG FIELD	MD Reference:	RKB = 20' @ 5127.00usft (RIG)
Site:	1N-65W-22 FAWN 2734 & 2833 PAD	North Reference:	True
Well:	FAWN 2833-02H	Survey Calculation Method:	Minimum Curvature
Wellbore:	Plan A		
Design:	Design #1		

Plan Sections										
Measured Depth (usft)	Inclination (°)	Azimuth (°)	Vertical Depth (usft)	+N/-S (usft)	+E/-W (usft)	Dogleg Rate (°/100usft)	Build Rate (°/100usft)	Turn Rate (°/100usft)	TFO (°)	Target
0.00	0.00	0.00	0.00	0.00	0.00	0.00	0.00	0.00	0.00	
231.90	0.00	0.00	231.90	0.00	0.00	0.00	0.00	0.00	0.00	
1,957.40	34.51	268.95	1,854.95	-9.24	-504.04	2.00	2.00	0.00	268.95	
7,873.97	34.51	268.95	6,730.36	-70.66	-3,855.51	0.00	0.00	0.00	0.00	
8,867.93	90.00	179.91	7,250.00	-707.82	-4,211.72	9.00	5.58	-8.96	-89.21	
18,639.11	90.00	179.91	7,250.00	-10,478.99	-4,196.28	0.00	0.00	0.00	0.00	FAWN 2833-02H_BHI

# Planning Report

<b>Database:</b>	EDM 5000.16 Single User Db	<b>Local Co-ordinate Reference:</b>	Well FAWN 2833-02H
<b>Company:</b>	VERDAD RESOURCES	<b>TVD Reference:</b>	RKB = 20' @ 5127.00usft (RIG)
<b>Project:</b>	WATTENBERG FIELD	<b>MD Reference:</b>	RKB = 20' @ 5127.00usft (RIG)
<b>Site:</b>	1N-65W-22 FAWN 2734 & 2833 PAD	<b>North Reference:</b>	True
<b>Well:</b>	FAWN 2833-02H	<b>Survey Calculation Method:</b>	Minimum Curvature
<b>Wellbore:</b>	Plan A		
<b>Design:</b>	Design #1		

Planned Survey									
Measured Depth (usft)	Inclination (°)	Azimuth (°)	Vertical Depth (usft)	+N/-S (usft)	+E/-W (usft)	Vertical Section (usft)	Dogleg Rate (°/100usft)	Build Rate (°/100usft)	Turn Rate (°/100usft)
0.00	0.00	0.00	0.00	0.00	0.00	0.00	0.00	0.00	0.00
100.00	0.00	0.00	100.00	0.00	0.00	0.00	0.00	0.00	0.00
200.00	0.00	0.00	200.00	0.00	0.00	0.00	0.00	0.00	0.00
231.90	0.00	0.00	231.90	0.00	0.00	0.00	0.00	0.00	0.00
Begin Nudge @ 231.90ft									
300.00	1.36	268.95	299.99	-0.01	-0.81	0.01	2.00	2.00	0.00
400.00	3.36	268.95	399.90	-0.09	-4.93	0.08	2.00	2.00	0.00
500.00	5.36	268.95	499.61	-0.23	-12.53	0.21	2.00	2.00	0.00
600.00	7.36	268.95	598.99	-0.43	-23.61	0.40	2.00	2.00	0.00
700.00	9.36	268.95	697.92	-0.70	-38.15	0.64	2.00	2.00	0.00
800.00	11.36	268.95	796.28	-1.03	-56.13	0.94	2.00	2.00	0.00
900.00	13.36	268.95	893.96	-1.42	-77.54	1.30	2.00	2.00	0.00
1,000.00	15.36	268.95	990.83	-1.88	-102.34	1.71	2.00	2.00	0.00
1,100.00	17.36	268.95	1,086.78	-2.39	-130.50	2.19	2.00	2.00	0.00
1,200.00	19.36	268.95	1,181.68	-2.97	-162.00	2.71	2.00	2.00	0.00
1,300.00	21.36	268.95	1,275.43	-3.61	-196.78	3.30	2.00	2.00	0.00
1,400.00	23.36	268.95	1,367.90	-4.30	-234.82	3.93	2.00	2.00	0.00
1,500.00	25.36	268.95	1,458.99	-5.06	-276.06	4.63	2.00	2.00	0.00
1,600.00	27.36	268.95	1,548.59	-5.87	-320.46	5.37	2.00	2.00	0.00
1,700.00	29.36	268.95	1,636.58	-6.74	-367.95	6.17	2.00	2.00	0.00
1,800.00	31.36	268.95	1,722.86	-7.67	-418.49	7.01	2.00	2.00	0.00
1,900.00	33.36	268.95	1,807.32	-8.65	-472.00	7.91	2.00	2.00	0.00
1,957.40	34.51	268.95	1,854.95	-9.24	-504.04	8.45	2.00	2.00	0.00
Hold Tangent @ 1957.40ft									
2,000.00	34.51	268.95	1,890.05	-9.68	-528.17	8.85	0.00	0.00	0.00
2,100.00	34.51	268.95	1,972.45	-10.72	-584.82	9.80	0.00	0.00	0.00
2,200.00	34.51	268.95	2,054.86	-11.76	-641.46	10.75	0.00	0.00	0.00
2,300.00	34.51	268.95	2,137.26	-12.79	-698.11	11.70	0.00	0.00	0.00
2,400.00	34.51	268.95	2,219.66	-13.83	-754.75	12.65	0.00	0.00	0.00
2,436.82	34.51	268.95	2,250.00	-14.22	-775.61	13.00	0.00	0.00	0.00
9 5/8"									
2,500.00	34.51	268.95	2,302.06	-14.87	-811.40	13.60	0.00	0.00	0.00
2,600.00	34.51	268.95	2,384.47	-15.91	-868.04	14.55	0.00	0.00	0.00
2,700.00	34.51	268.95	2,466.87	-16.95	-924.69	15.50	0.00	0.00	0.00
2,800.00	34.51	268.95	2,549.27	-17.99	-981.33	16.44	0.00	0.00	0.00
2,900.00	34.51	268.95	2,631.67	-19.02	-1,037.98	17.39	0.00	0.00	0.00
3,000.00	34.51	268.95	2,714.08	-20.06	-1,094.63	18.34	0.00	0.00	0.00
3,100.00	34.51	268.95	2,796.48	-21.10	-1,151.27	19.29	0.00	0.00	0.00
3,200.00	34.51	268.95	2,878.88	-22.14	-1,207.92	20.24	0.00	0.00	0.00
3,300.00	34.51	268.95	2,961.29	-23.18	-1,264.56	21.19	0.00	0.00	0.00
3,400.00	34.51	268.95	3,043.69	-24.22	-1,321.21	22.14	0.00	0.00	0.00
3,500.00	34.51	268.95	3,126.09	-25.25	-1,377.85	23.09	0.00	0.00	0.00
3,600.00	34.51	268.95	3,208.49	-26.29	-1,434.50	24.04	0.00	0.00	0.00
3,700.00	34.51	268.95	3,290.90	-27.33	-1,491.14	24.99	0.00	0.00	0.00
3,800.00	34.51	268.95	3,373.30	-28.37	-1,547.79	25.94	0.00	0.00	0.00
3,900.00	34.51	268.95	3,455.70	-29.41	-1,604.44	26.89	0.00	0.00	0.00
4,000.00	34.51	268.95	3,538.10	-30.44	-1,661.08	27.84	0.00	0.00	0.00
4,100.00	34.51	268.95	3,620.51	-31.48	-1,717.73	28.78	0.00	0.00	0.00
4,200.00	34.51	268.95	3,702.91	-32.52	-1,774.37	29.73	0.00	0.00	0.00
4,300.00	34.51	268.95	3,785.31	-33.56	-1,831.02	30.68	0.00	0.00	0.00
4,400.00	34.51	268.95	3,867.72	-34.60	-1,887.66	31.63	0.00	0.00	0.00
4,500.00	34.51	268.95	3,950.12	-35.64	-1,944.31	32.58	0.00	0.00	0.00
4,600.00	34.51	268.95	4,032.52	-36.67	-2,000.95	33.53	0.00	0.00	0.00

## Planning Report

<b>Database:</b>	EDM 5000.16 Single User Db	<b>Local Co-ordinate Reference:</b>	Well FAWN 2833-02H
<b>Company:</b>	VERDAD RESOURCES	<b>TVD Reference:</b>	RKB = 20' @ 5127.00usft (RIG)
<b>Project:</b>	WATTENBERG FIELD	<b>MD Reference:</b>	RKB = 20' @ 5127.00usft (RIG)
<b>Site:</b>	1N-65W-22 FAWN 2734 & 2833 PAD	<b>North Reference:</b>	True
<b>Well:</b>	FAWN 2833-02H	<b>Survey Calculation Method:</b>	Minimum Curvature
<b>Wellbore:</b>	Plan A		
<b>Design:</b>	Design #1		

Planned Survey										
Measured Depth (usft)	Inclination (°)	Azimuth (°)	Vertical Depth (usft)	+N/-S (usft)	+E/-W (usft)	Vertical Section (usft)	Dogleg Rate (°/100usft)	Build Rate (°/100usft)	Turn Rate (°/100usft)	
4,700.00	34.51	268.95	4,114.92	-37.71	-2,057.60	34.48	0.00	0.00	0.00	
4,800.00	34.51	268.95	4,197.33	-38.75	-2,114.24	35.43	0.00	0.00	0.00	
4,900.00	34.51	268.95	4,279.73	-39.79	-2,170.89	36.38	0.00	0.00	0.00	
5,000.00	34.51	268.95	4,362.13	-40.83	-2,227.54	37.33	0.00	0.00	0.00	
5,100.00	34.51	268.95	4,444.53	-41.86	-2,284.18	38.28	0.00	0.00	0.00	
5,200.00	34.51	268.95	4,526.94	-42.90	-2,340.83	39.23	0.00	0.00	0.00	
5,300.00	34.51	268.95	4,609.34	-43.94	-2,397.47	40.17	0.00	0.00	0.00	
5,400.00	34.51	268.95	4,691.74	-44.98	-2,454.12	41.12	0.00	0.00	0.00	
5,500.00	34.51	268.95	4,774.15	-46.02	-2,510.76	42.07	0.00	0.00	0.00	
5,600.00	34.51	268.95	4,856.55	-47.06	-2,567.41	43.02	0.00	0.00	0.00	
5,700.00	34.51	268.95	4,938.95	-48.09	-2,624.05	43.97	0.00	0.00	0.00	
5,800.00	34.51	268.95	5,021.35	-49.13	-2,680.70	44.92	0.00	0.00	0.00	
5,900.00	34.51	268.95	5,103.76	-50.17	-2,737.35	45.87	0.00	0.00	0.00	
6,000.00	34.51	268.95	5,186.16	-51.21	-2,793.99	46.82	0.00	0.00	0.00	
6,100.00	34.51	268.95	5,268.56	-52.25	-2,850.64	47.77	0.00	0.00	0.00	
6,200.00	34.51	268.95	5,350.96	-53.28	-2,907.28	48.72	0.00	0.00	0.00	
6,300.00	34.51	268.95	5,433.37	-54.32	-2,963.93	49.67	0.00	0.00	0.00	
6,400.00	34.51	268.95	5,515.77	-55.36	-3,020.57	50.62	0.00	0.00	0.00	
6,500.00	34.51	268.95	5,598.17	-56.40	-3,077.22	51.57	0.00	0.00	0.00	
6,600.00	34.51	268.95	5,680.58	-57.44	-3,133.86	52.51	0.00	0.00	0.00	
6,700.00	34.51	268.95	5,762.98	-58.48	-3,190.51	53.46	0.00	0.00	0.00	
6,800.00	34.51	268.95	5,845.38	-59.51	-3,247.15	54.41	0.00	0.00	0.00	
6,900.00	34.51	268.95	5,927.78	-60.55	-3,303.80	55.36	0.00	0.00	0.00	
7,000.00	34.51	268.95	6,010.19	-61.59	-3,360.45	56.31	0.00	0.00	0.00	
7,100.00	34.51	268.95	6,092.59	-62.63	-3,417.09	57.26	0.00	0.00	0.00	
7,200.00	34.51	268.95	6,174.99	-63.67	-3,473.74	58.21	0.00	0.00	0.00	
7,300.00	34.51	268.95	6,257.39	-64.70	-3,530.38	59.16	0.00	0.00	0.00	
7,400.00	34.51	268.95	6,339.80	-65.74	-3,587.03	60.11	0.00	0.00	0.00	
7,500.00	34.51	268.95	6,422.20	-66.78	-3,643.67	61.06	0.00	0.00	0.00	
7,600.00	34.51	268.95	6,504.60	-67.82	-3,700.32	62.01	0.00	0.00	0.00	
7,700.00	34.51	268.95	6,587.01	-68.86	-3,756.96	62.96	0.00	0.00	0.00	
7,800.00	34.51	268.95	6,669.41	-69.90	-3,813.61	63.91	0.00	0.00	0.00	
7,873.97	34.51	268.95	6,730.36	-70.66	-3,855.51	64.61	0.00	0.00	0.00	
KOP @ 7873.97ft :: DLS = 9°/100'										
7,900.00	34.61	264.82	6,751.80	-71.47	-3,870.25	65.39	9.00	0.39	-15.85	
7,950.00	35.19	257.02	6,792.83	-75.99	-3,898.44	69.86	9.00	1.16	-15.61	
8,000.00	36.25	249.53	6,833.44	-84.40	-3,926.35	78.23	9.00	2.13	-14.99	
8,050.00	37.76	242.48	6,873.39	-96.65	-3,953.79	90.44	9.00	3.01	-14.10	
8,100.00	39.65	235.95	6,912.42	-112.67	-3,980.60	106.41	9.00	3.79	-13.06	
8,150.00	41.88	229.96	6,950.30	-132.35	-4,006.61	126.05	9.00	4.46	-11.98	
8,200.00	44.40	224.50	6,986.79	-155.57	-4,031.66	149.24	9.00	5.03	-10.92	
8,250.00	47.15	219.53	7,021.67	-182.20	-4,055.59	175.83	9.00	5.50	-9.94	
8,300.00	50.10	214.99	7,054.73	-212.07	-4,078.27	205.66	9.00	5.90	-9.06	
8,350.00	53.21	210.85	7,085.75	-244.98	-4,099.54	238.54	9.00	6.22	-8.30	
8,400.00	56.45	207.03	7,114.55	-280.75	-4,119.29	274.28	9.00	6.49	-7.64	
8,450.00	59.80	203.49	7,140.96	-319.15	-4,137.38	312.65	9.00	6.70	-7.08	
8,500.00	63.24	200.19	7,164.80	-359.94	-4,153.70	353.41	9.00	6.88	-6.60	
8,550.00	66.76	197.08	7,185.93	-402.87	-4,168.16	396.32	9.00	7.02	-6.21	
8,600.00	70.33	194.14	7,204.22	-447.68	-4,180.66	441.11	9.00	7.14	-5.89	
8,650.00	73.94	191.32	7,219.56	-494.09	-4,191.14	487.50	9.00	7.23	-5.63	
8,700.00	77.59	188.61	7,231.85	-541.81	-4,199.51	535.21	9.00	7.30	-5.43	
8,750.00	81.27	185.97	7,241.03	-590.55	-4,205.74	583.94	9.00	7.35	-5.28	
8,800.00	84.96	183.38	7,247.02	-640.01	-4,209.78	633.40	9.00	7.39	-5.17	
8,850.00	88.67	180.82	7,249.79	-689.89	-4,211.61	683.27	9.00	7.41	-5.12	

# Planning Report

<b>Database:</b>	EDM 5000.16 Single User Db	<b>Local Co-ordinate Reference:</b>	Well FAWN 2833-02H
<b>Company:</b>	VERDAD RESOURCES	<b>TVD Reference:</b>	RKB = 20' @ 5127.00usft (RIG)
<b>Project:</b>	WATTENBERG FIELD	<b>MD Reference:</b>	RKB = 20' @ 5127.00usft (RIG)
<b>Site:</b>	1N-65W-22 FAWN 2734 & 2833 PAD	<b>North Reference:</b>	True
<b>Well:</b>	FAWN 2833-02H	<b>Survey Calculation Method:</b>	Minimum Curvature
<b>Wellbore:</b>	Plan A		
<b>Design:</b>	Design #1		

Planned Survey									
Measured Depth (usft)	Inclination (°)	Azimuth (°)	Vertical Depth (usft)	+N/-S (usft)	+E/-W (usft)	Vertical Section (usft)	Dogleg Rate (°/100usft)	Build Rate (°/100usft)	Turn Rate (°/100usft)
8,867.93	90.00	179.91	7,250.00	-707.82	-4,211.72	701.20	9.00	7.42	-5.10
End Build/TPZ @ 8867.93ft									
8,900.00	90.00	179.91	7,250.00	-739.89	-4,211.67	733.27	0.00	0.00	0.00
9,000.00	90.00	179.91	7,250.00	-839.89	-4,211.52	833.27	0.00	0.00	0.00
9,100.00	90.00	179.91	7,250.00	-939.89	-4,211.36	933.27	0.00	0.00	0.00
9,200.00	90.00	179.91	7,250.00	-1,039.89	-4,211.20	1,033.27	0.00	0.00	0.00
9,300.00	90.00	179.91	7,250.00	-1,139.89	-4,211.04	1,133.27	0.00	0.00	0.00
9,400.00	90.00	179.91	7,250.00	-1,239.89	-4,210.88	1,233.27	0.00	0.00	0.00
9,500.00	90.00	179.91	7,250.00	-1,339.89	-4,210.73	1,333.27	0.00	0.00	0.00
9,600.00	90.00	179.91	7,250.00	-1,439.89	-4,210.57	1,433.27	0.00	0.00	0.00
9,700.00	90.00	179.91	7,250.00	-1,539.89	-4,210.41	1,533.27	0.00	0.00	0.00
9,800.00	90.00	179.91	7,250.00	-1,639.89	-4,210.25	1,633.27	0.00	0.00	0.00
9,900.00	90.00	179.91	7,250.00	-1,739.89	-4,210.09	1,733.27	0.00	0.00	0.00
10,000.00	90.00	179.91	7,250.00	-1,839.89	-4,209.93	1,833.27	0.00	0.00	0.00
10,100.00	90.00	179.91	7,250.00	-1,939.89	-4,209.78	1,933.27	0.00	0.00	0.00
10,200.00	90.00	179.91	7,250.00	-2,039.89	-4,209.62	2,033.27	0.00	0.00	0.00
10,300.00	90.00	179.91	7,250.00	-2,139.89	-4,209.46	2,133.27	0.00	0.00	0.00
10,400.00	90.00	179.91	7,250.00	-2,239.89	-4,209.30	2,233.27	0.00	0.00	0.00
10,500.00	90.00	179.91	7,250.00	-2,339.89	-4,209.14	2,333.27	0.00	0.00	0.00
10,600.00	90.00	179.91	7,250.00	-2,439.89	-4,208.99	2,433.27	0.00	0.00	0.00
10,700.00	90.00	179.91	7,250.00	-2,539.89	-4,208.83	2,533.27	0.00	0.00	0.00
10,800.00	90.00	179.91	7,250.00	-2,639.89	-4,208.67	2,633.27	0.00	0.00	0.00
10,900.00	90.00	179.91	7,250.00	-2,739.89	-4,208.51	2,733.27	0.00	0.00	0.00
11,000.00	90.00	179.91	7,250.00	-2,839.89	-4,208.35	2,833.27	0.00	0.00	0.00
11,100.00	90.00	179.91	7,250.00	-2,939.89	-4,208.20	2,933.27	0.00	0.00	0.00
11,200.00	90.00	179.91	7,250.00	-3,039.89	-4,208.04	3,033.27	0.00	0.00	0.00
11,300.00	90.00	179.91	7,250.00	-3,139.89	-4,207.88	3,133.27	0.00	0.00	0.00
11,400.00	90.00	179.91	7,250.00	-3,239.89	-4,207.72	3,233.27	0.00	0.00	0.00
11,500.00	90.00	179.91	7,250.00	-3,339.89	-4,207.56	3,333.27	0.00	0.00	0.00
11,600.00	90.00	179.91	7,250.00	-3,439.88	-4,207.41	3,433.27	0.00	0.00	0.00
11,700.00	90.00	179.91	7,250.00	-3,539.88	-4,207.25	3,533.27	0.00	0.00	0.00
11,800.00	90.00	179.91	7,250.00	-3,639.88	-4,207.09	3,633.27	0.00	0.00	0.00
11,900.00	90.00	179.91	7,250.00	-3,739.88	-4,206.93	3,733.27	0.00	0.00	0.00
12,000.00	90.00	179.91	7,250.00	-3,839.88	-4,206.77	3,833.27	0.00	0.00	0.00
12,100.00	90.00	179.91	7,250.00	-3,939.88	-4,206.61	3,933.27	0.00	0.00	0.00
12,200.00	90.00	179.91	7,250.00	-4,039.88	-4,206.46	4,033.27	0.00	0.00	0.00
12,300.00	90.00	179.91	7,250.00	-4,139.88	-4,206.30	4,133.27	0.00	0.00	0.00
12,400.00	90.00	179.91	7,250.00	-4,239.88	-4,206.14	4,233.27	0.00	0.00	0.00
12,500.00	90.00	179.91	7,250.00	-4,339.88	-4,205.98	4,333.27	0.00	0.00	0.00
12,600.00	90.00	179.91	7,250.00	-4,439.88	-4,205.82	4,433.27	0.00	0.00	0.00
12,700.00	90.00	179.91	7,250.00	-4,539.88	-4,205.67	4,533.27	0.00	0.00	0.00
12,800.00	90.00	179.91	7,250.00	-4,639.88	-4,205.51	4,633.27	0.00	0.00	0.00
12,900.00	90.00	179.91	7,250.00	-4,739.88	-4,205.35	4,733.27	0.00	0.00	0.00
13,000.00	90.00	179.91	7,250.00	-4,839.88	-4,205.19	4,833.27	0.00	0.00	0.00
13,100.00	90.00	179.91	7,250.00	-4,939.88	-4,205.03	4,933.27	0.00	0.00	0.00
13,200.00	90.00	179.91	7,250.00	-5,039.88	-4,204.88	5,033.27	0.00	0.00	0.00
13,300.00	90.00	179.91	7,250.00	-5,139.88	-4,204.72	5,133.27	0.00	0.00	0.00
13,400.00	90.00	179.91	7,250.00	-5,239.88	-4,204.56	5,233.27	0.00	0.00	0.00
13,500.00	90.00	179.91	7,250.00	-5,339.88	-4,204.40	5,333.27	0.00	0.00	0.00
13,600.00	90.00	179.91	7,250.00	-5,439.88	-4,204.24	5,433.27	0.00	0.00	0.00
13,700.00	90.00	179.91	7,250.00	-5,539.88	-4,204.08	5,533.27	0.00	0.00	0.00
13,800.00	90.00	179.91	7,250.00	-5,639.88	-4,203.93	5,633.27	0.00	0.00	0.00
13,900.00	90.00	179.91	7,250.00	-5,739.88	-4,203.77	5,733.27	0.00	0.00	0.00

## Planning Report

<b>Database:</b>	EDM 5000.16 Single User Db	<b>Local Co-ordinate Reference:</b>	Well FAWN 2833-02H
<b>Company:</b>	VERDAD RESOURCES	<b>TVD Reference:</b>	RKB = 20' @ 5127.00usft (RIG)
<b>Project:</b>	WATTENBERG FIELD	<b>MD Reference:</b>	RKB = 20' @ 5127.00usft (RIG)
<b>Site:</b>	1N-65W-22 FAWN 2734 & 2833 PAD	<b>North Reference:</b>	True
<b>Well:</b>	FAWN 2833-02H	<b>Survey Calculation Method:</b>	Minimum Curvature
<b>Wellbore:</b>	Plan A		
<b>Design:</b>	Design #1		

Planned Survey										
Measured Depth (usft)	Inclination (°)	Azimuth (°)	Vertical Depth (usft)	+N/-S (usft)	+E/-W (usft)	Vertical Section (usft)	Dogleg Rate (°/100usft)	Build Rate (°/100usft)	Turn Rate (°/100usft)	
14,000.00	90.00	179.91	7,250.00	-5,839.88	-4,203.61	5,833.27	0.00	0.00	0.00	
14,100.00	90.00	179.91	7,250.00	-5,939.88	-4,203.45	5,933.27	0.00	0.00	0.00	
14,200.00	90.00	179.91	7,250.00	-6,039.88	-4,203.29	6,033.27	0.00	0.00	0.00	
14,300.00	90.00	179.91	7,250.00	-6,139.88	-4,203.14	6,133.27	0.00	0.00	0.00	
14,400.00	90.00	179.91	7,250.00	-6,239.88	-4,202.98	6,233.27	0.00	0.00	0.00	
14,500.00	90.00	179.91	7,250.00	-6,339.88	-4,202.82	6,333.27	0.00	0.00	0.00	
14,600.00	90.00	179.91	7,250.00	-6,439.88	-4,202.66	6,433.27	0.00	0.00	0.00	
14,700.00	90.00	179.91	7,250.00	-6,539.88	-4,202.50	6,533.27	0.00	0.00	0.00	
14,800.00	90.00	179.91	7,250.00	-6,639.88	-4,202.35	6,633.27	0.00	0.00	0.00	
14,900.00	90.00	179.91	7,250.00	-6,739.88	-4,202.19	6,733.27	0.00	0.00	0.00	
15,000.00	90.00	179.91	7,250.00	-6,839.88	-4,202.03	6,833.27	0.00	0.00	0.00	
15,100.00	90.00	179.91	7,250.00	-6,939.88	-4,201.87	6,933.27	0.00	0.00	0.00	
15,200.00	90.00	179.91	7,250.00	-7,039.88	-4,201.71	7,033.27	0.00	0.00	0.00	
15,300.00	90.00	179.91	7,250.00	-7,139.88	-4,201.56	7,133.27	0.00	0.00	0.00	
15,400.00	90.00	179.91	7,250.00	-7,239.88	-4,201.40	7,233.27	0.00	0.00	0.00	
15,500.00	90.00	179.91	7,250.00	-7,339.88	-4,201.24	7,333.27	0.00	0.00	0.00	
15,600.00	90.00	179.91	7,250.00	-7,439.88	-4,201.08	7,433.27	0.00	0.00	0.00	
15,700.00	90.00	179.91	7,250.00	-7,539.88	-4,200.92	7,533.27	0.00	0.00	0.00	
15,800.00	90.00	179.91	7,250.00	-7,639.88	-4,200.76	7,633.27	0.00	0.00	0.00	
15,900.00	90.00	179.91	7,250.00	-7,739.88	-4,200.61	7,733.27	0.00	0.00	0.00	
16,000.00	90.00	179.91	7,250.00	-7,839.88	-4,200.45	7,833.27	0.00	0.00	0.00	
16,100.00	90.00	179.91	7,250.00	-7,939.88	-4,200.29	7,933.27	0.00	0.00	0.00	
16,200.00	90.00	179.91	7,250.00	-8,039.88	-4,200.13	8,033.27	0.00	0.00	0.00	
16,300.00	90.00	179.91	7,250.00	-8,139.88	-4,199.97	8,133.27	0.00	0.00	0.00	
16,400.00	90.00	179.91	7,250.00	-8,239.88	-4,199.82	8,233.27	0.00	0.00	0.00	
16,500.00	90.00	179.91	7,250.00	-8,339.88	-4,199.66	8,333.27	0.00	0.00	0.00	
16,600.00	90.00	179.91	7,250.00	-8,439.88	-4,199.50	8,433.27	0.00	0.00	0.00	
16,700.00	90.00	179.91	7,250.00	-8,539.88	-4,199.34	8,533.27	0.00	0.00	0.00	
16,800.00	90.00	179.91	7,250.00	-8,639.88	-4,199.18	8,633.27	0.00	0.00	0.00	
16,900.00	90.00	179.91	7,250.00	-8,739.88	-4,199.03	8,733.27	0.00	0.00	0.00	
17,000.00	90.00	179.91	7,250.00	-8,839.88	-4,198.87	8,833.27	0.00	0.00	0.00	
17,100.00	90.00	179.91	7,250.00	-8,939.88	-4,198.71	8,933.27	0.00	0.00	0.00	
17,200.00	90.00	179.91	7,250.00	-9,039.88	-4,198.55	9,033.27	0.00	0.00	0.00	
17,300.00	90.00	179.91	7,250.00	-9,139.88	-4,198.39	9,133.27	0.00	0.00	0.00	
17,400.00	90.00	179.91	7,250.00	-9,239.88	-4,198.24	9,233.27	0.00	0.00	0.00	
17,500.00	90.00	179.91	7,250.00	-9,339.88	-4,198.08	9,333.27	0.00	0.00	0.00	
17,600.00	90.00	179.91	7,250.00	-9,439.88	-4,197.92	9,433.27	0.00	0.00	0.00	
17,700.00	90.00	179.91	7,250.00	-9,539.88	-4,197.76	9,533.27	0.00	0.00	0.00	
17,800.00	90.00	179.91	7,250.00	-9,639.88	-4,197.60	9,633.27	0.00	0.00	0.00	
17,900.00	90.00	179.91	7,250.00	-9,739.88	-4,197.44	9,733.27	0.00	0.00	0.00	
18,000.00	90.00	179.91	7,250.00	-9,839.88	-4,197.29	9,833.27	0.00	0.00	0.00	
18,100.00	90.00	179.91	7,250.00	-9,939.88	-4,197.13	9,933.27	0.00	0.00	0.00	
18,200.00	90.00	179.91	7,250.00	-10,039.88	-4,196.97	10,033.27	0.00	0.00	0.00	
18,300.00	90.00	179.91	7,250.00	-10,139.88	-4,196.81	10,133.27	0.00	0.00	0.00	
18,400.00	90.00	179.91	7,250.00	-10,239.88	-4,196.65	10,233.27	0.00	0.00	0.00	
18,500.00	90.00	179.91	7,250.00	-10,339.88	-4,196.50	10,333.27	0.00	0.00	0.00	
18,549.11	90.00	179.91	7,250.00	-10,388.99	-4,196.42	10,382.38	0.00	0.00	0.00	
BPZ @ 18549.11ft										
18,600.00	90.00	179.91	7,250.00	-10,439.88	-4,196.34	10,433.27	0.00	0.00	0.00	
18,639.11	90.00	179.91	7,250.00	-10,478.99	-4,196.28	10,472.39	0.00	0.00	0.00	
TD Well @ 18639.11ft										

## Planning Report

<b>Database:</b>	EDM 5000.16 Single User Db	<b>Local Co-ordinate Reference:</b>	Well FAWN 2833-02H
<b>Company:</b>	VERDAD RESOURCES	<b>TVD Reference:</b>	RKB = 20' @ 5127.00usft (RIG)
<b>Project:</b>	WATTENBERG FIELD	<b>MD Reference:</b>	RKB = 20' @ 5127.00usft (RIG)
<b>Site:</b>	1N-65W-22 FAWN 2734 & 2833 PAD	<b>North Reference:</b>	True
<b>Well:</b>	FAWN 2833-02H	<b>Survey Calculation Method:</b>	Minimum Curvature
<b>Wellbore:</b>	Plan A		
<b>Design:</b>	Design #1		

Casing Points					
Measured Depth (usft)	Vertical Depth (usft)	Name		Casing Diameter (")	Hole Diameter (")
2,436.82	2,250.00	9 5/8"		9-5/8	13-1/2

Plan Annotations					
Measured Depth (usft)	Vertical Depth (usft)	Local Coordinates		Comment	
		+N/-S (usft)	+E/-W (usft)		
231.90	231.90	0.00	0.00	Begin Nudge @ 231.90ft	
1,957.40	1,854.95	-9.24	-504.04	Hold Tangent @ 1957.40ft	
7,873.97	6,730.36	-70.66	-3,855.51	KOP @ 7873.97ft :: DLS = 9°/100'	
8,867.93	7,250.00	-707.82	-4,211.72	End Build/TPZ @ 8867.93ft	
18,549.11	7,250.00	-10,388.99	-4,196.42	BPZ @ 18549.11ft	
18,639.11	7,250.00	-10,478.99	-4,196.28	TD Well @ 18639.11ft	