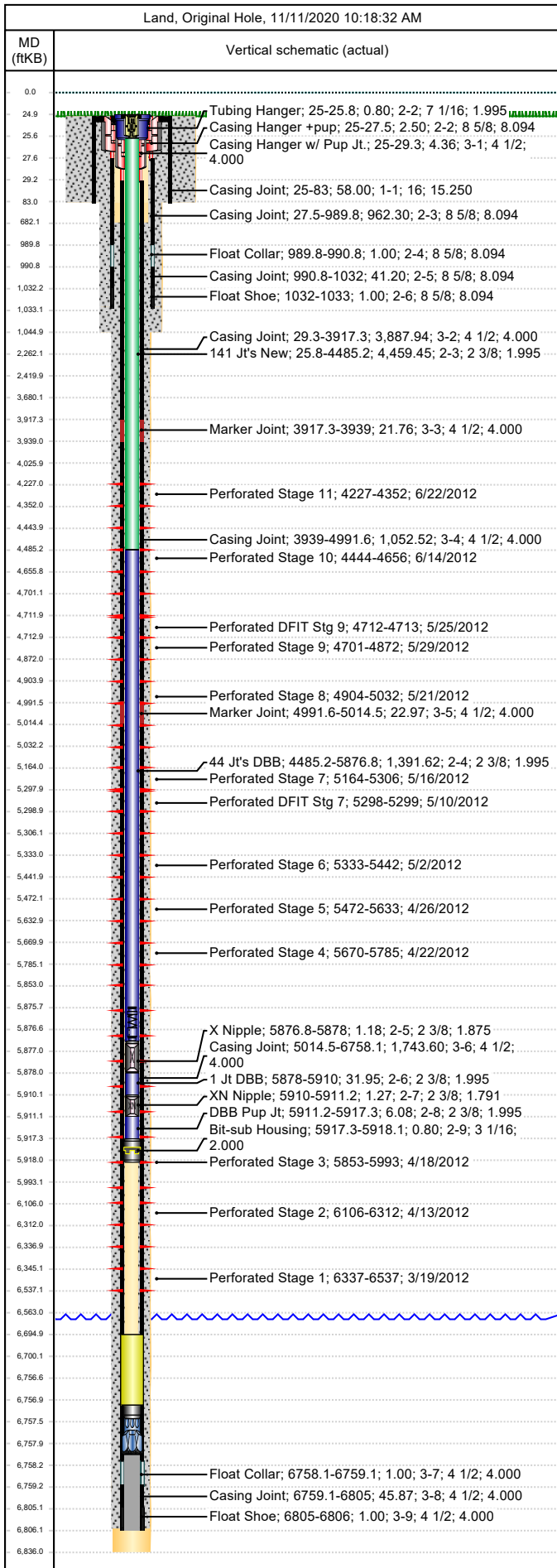




# Wellbore Schematic

Well Name SKR-698-09-AV-23	Lease Chevron USA	Field Name Skinner Ridge	Business Unit Mid-Continent
-------------------------------	----------------------	-----------------------------	--------------------------------

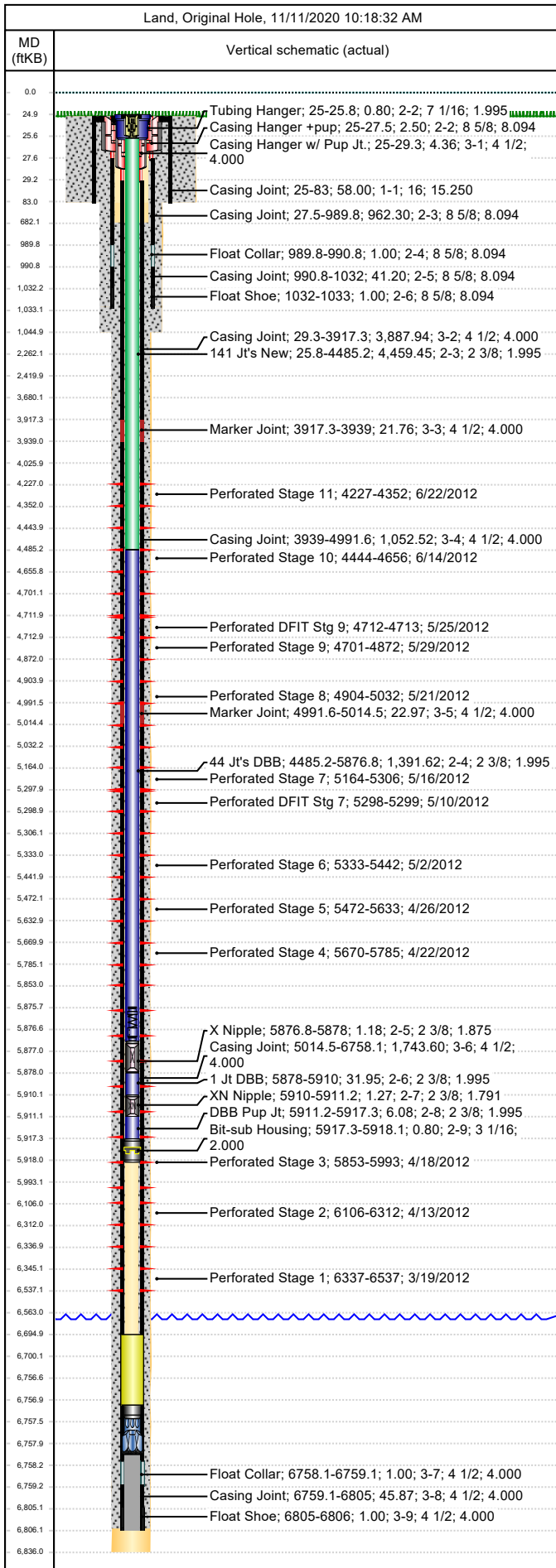


Job Details							
Job Category				Start Date		Rig/Unit End Date	
Casing Strings							
Csg Des	OD (in)	Wt/Len (lb/ft)	Grade	Top Thread	Set Depth (MD) (ftKB)		
Conductor	16	65.00	H-40		83		
Surface	8 5/8	24.00	K-55	ST&C	1033		
Production Casing	4 1/2	11.60	L-80	LT&C	6806		
Tubing Strings							
Tubing - Production set at 5,918.1ftKB on 10/12/2012 17:30							
Tubing Description			Run Date	String Length (ft)		Set Depth (MD) (ftKB)	
Tubing - Production			10/12/2012	5,918.15		5,918.1	
Item Des		Jts	OD (in)	Wt (lb/ft)	Grade	Len (ft)	Btm (ftKB)
KBGL						25.00	24.9
Tubing Hanger			7 1/16			0.80	25.7
141 Jt's New		141	2 3/8	4.70	L-80	4,459.45	4,485.2
44 Jt's DBB		44	2 3/8	4.70	L-80	1,391.62	5,876.8
X Nipple			2 3/8			1.18	5,878.0
1 Jt DBB		1	2 3/8	4.70	L-80	31.95	5,910.0
XN Nipple			2 3/8			1.27	5,911.2
DBB Pup Jt			2 3/8			6.08	5,917.3
Bit-sub Housing			3 1/16			0.80	5,918.1
Tubing Landed @							5,918.1
Perforations							
Date	Top (ftKB)	Btm (ftKB)	Shot Dens (shots/ft)	Entered Shot Total	Linked Zone		
6/22/2012	4,227.0	4,352.0	3.0	27	Mesa Verde - WMFK -Cameo Coal, Original Hole		
6/14/2012	4,444.0	4,656.0	3.0	27	Mesa Verde - WMFK -Cameo Coal, Original Hole		
5/29/2012	4,701.0	4,872.0	3.0	27	Mesa Verde - WMFK -Cameo Coal, Original Hole		
5/25/2012	4,712.0	4,713.0	3.0	3	Mesa Verde - WMFK -Cameo Coal, Original Hole		
5/21/2012	4,904.0	5,032.0	3.0	27	Mesa Verde - WMFK -Cameo Coal, Original Hole		
5/16/2012	5,164.0	5,306.0	3.0	24	Mesa Verde - WMFK -Cameo Coal, Original Hole		
5/10/2012	5,298.0	5,299.0	3.0	3	Mesa Verde - WMFK -Cameo Coal, Original Hole		
5/2/2012	5,333.0	5,442.0	3.0	27	Mesa Verde - WMFK -Cameo Coal, Original Hole		
4/26/2012	5,472.0	5,633.0	3.0	27	Mesa Verde - WMFK -Cameo Coal, Original Hole		
4/22/2012	5,670.0	5,785.0	3.0	27	Mesa Verde - WMFK -Cameo Coal, Original Hole		
4/18/2012	5,853.0	5,993.0	3.0	27	Mesa Verde - WMFK -Cameo Coal, Original Hole		
4/13/2012	6,106.0	6,312.0	3.0	27	Mesa Verde - WMFK -Cameo Coal, Original Hole		
3/19/2012	6,337.0	6,537.0	3.0	27	Mesa Verde - WMFK -Cameo Coal, Original Hole		
Other Strings							
Run Date	Pull Date	Set Depth (ftKB)	Com				
Other In Hole							
Des	Top (ftKB)	Btm (ftKB)	Run Date	Pull Date	Com		
4 1/2" Top CBP	4,177.0	4,179.0	7/5/2012	7/13/2012	Kill plug		
4 1/2" CFP	4,370.0	4,372.0	6/22/2012	7/13/2012	Stage 11		
4 1/2" CFP	4,676.0	4,678.0	6/14/2012	7/13/2012	Stage 10		
4 1/2" CBP	4,890.0	4,892.0	5/25/2012	7/13/2012	Stage 9		
4 1/2" CFP	5,060.0	5,062.0	5/21/2012	7/13/2012	Stage 8		
4 1/2" CBP	5,313.0	5,315.0	5/10/2012	7/13/2012	Stage 7		
4 1/2" CFP	5,457.0	5,459.0	5/2/2012	7/13/2012	Stage 6		
4 1/2" CFP	5,652.0	5,654.0	4/26/2012	7/13/2012	Stage 5		
4 1/2" CFP	5,805.0	5,807.0	4/22/2012	7/13/2012	Stage 4		



# Wellbore Schematic

Well Name SKR-698-09-AV-23	Lease Chevron USA	Field Name Skinner Ridge	Business Unit Mid-Continent
-------------------------------	----------------------	-----------------------------	--------------------------------



Other In Hole					
Des	Top (ftKB)	Btm (ftKB)	Run Date	Pull Date	Com
Bumper Spring	5,875.6	5,876.8	7/1/2013		
4 1/2" CFP	6,013.0	6,015.0	4/18/2012	7/13/2012	Stage 3
4 1/2" CFP	6,331.0	6,333.0	4/13/2012	7/13/2012	Stage 2
Sand Fill, 10/12/2012	6,695.0	6,757.0	10/11/2012		
Bit-Sub, 7/13/2012	6,756.6	6,757.4	7/13/2012		
3 7/8" Mill, 7/13/2012	6,757.4	6,758.0	7/13/2012		
PBTD	6,758.0	6,806.0	5/21/2009		