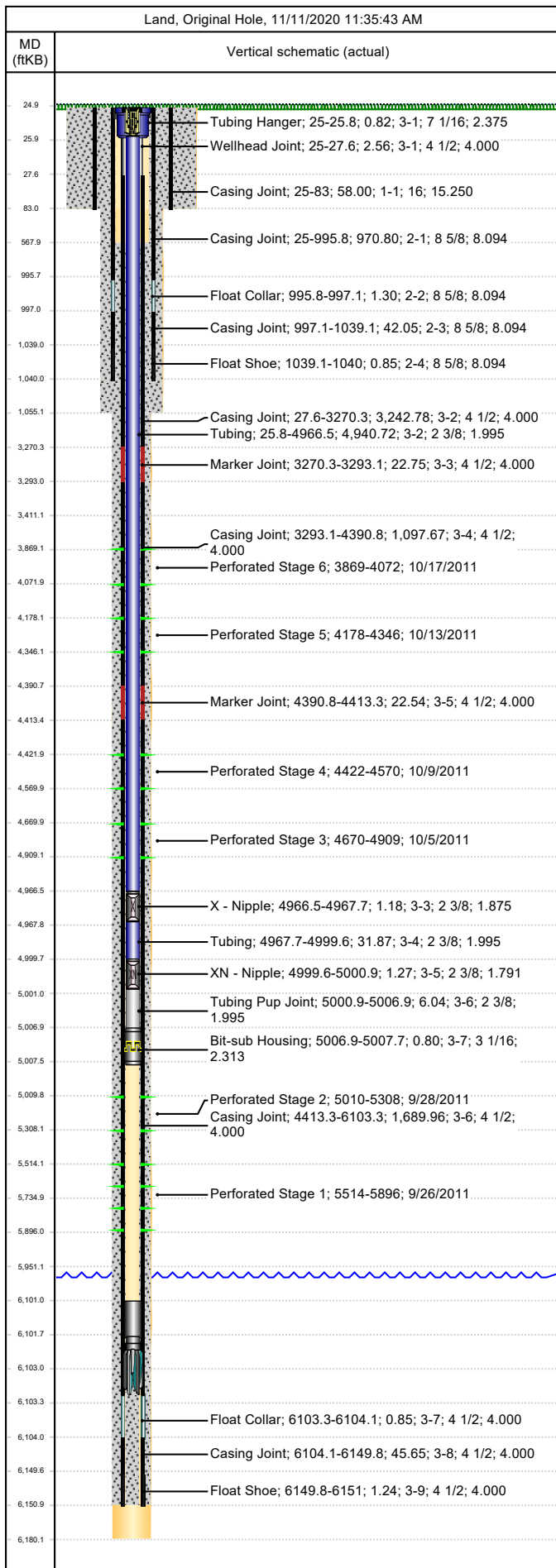




Wellbore Schematic

Well Name SKR-698-09-AV-11	Lease Chevron USA	Field Name Skinner Ridge	Business Unit Mid-Continent
-------------------------------	----------------------	-----------------------------	--------------------------------



Job Details						
Job Category			Start Date		Rig/Unit End Date	
Major Rig Work Over (MRWO)			6/1/2016		6/3/2016	
Casing Strings						
Csg Des	OD (in)	Wt/Len (lb/ft)	Grade	Top Thread	Set Depth (MD) (ftKB)	
Conductor	16	65.00	H-40		83	
Surface	8 5/8	24.00	K-55	ST&C	1040	
Production Casing	4 1/2	11.60	N-80	LT&C	6151	
Tubing Strings						
Tubing - Production set at 5,007.7ftKB on 6/2/2016 10:00						
Tubing Description			Run Date	String Length (ft)	Set Depth (MD) (ftKB)	
Tubing - Production			6/2/2016	4,982.70	5,007.7	
Item Des	Jts	OD (in)	Wt (lb/ft)	Grade	Len (ft)	Btm (ftKB)
Tubing Hanger	1	7 1/16			0.82	25.8
Tubing	156	2 3/8	4.70	L-80	4,940.72	4,966.5
X - Nipple	1	2 3/8			1.18	4,967.7
Tubing	1	2 3/8	4.70	L-80	31.87	4,999.6
XN - Nipple	1	2 3/8			1.27	5,000.9
Tubing Pup Joint	1	2 3/8			6.04	5,006.9
Bit-sub Housing	1	3 1/16			0.80	5,007.7
Perforations						
Date	Top (ftKB)	Btm (ftKB)	Shot Dens (shots/ft)	Entered Shot Total	Linked Zone	
10/17/2011	3,869.0	4,072.0	4.0	26	Mesa Verde - WMFK - Williams Fork, Original Hole	
10/13/2011	4,178.0	4,346.0	4.0	26	Mesa Verde - WMFK - Williams Fork, Original Hole	
10/9/2011	4,422.0	4,570.0	4.0	26	Mesa Verde - WMFK - Williams Fork, Original Hole	
10/5/2011	4,670.0	4,909.0	4.0	26	Mesa Verde - WMFK - Williams Fork, Original Hole	
9/28/2011	5,010.0	5,308.0	4.0	26	Mesa Verde - WMFK - Williams Fork, Original Hole	
9/26/2011	5,514.0	5,896.0	4.0	26	Mesa Verde - WMFK - Cameo Coal, Original Hole	
Other Strings						
Run Date	Pull Date	Set Depth (ftKB)	Com			
Other In Hole						
Des	Top (ftKB)	Btm (ftKB)	Run Date	Pull Date	Com	
Tight Spot, 2/23/2012	2,305.0	2,306.0	2/23/2012	7/24/2012		
4 1/2" CBP, SIWP 1100 prior to set plug	3,769.0	3,771.0	11/17/2011	12/7/2011	Kill Plug	
4 1/2" CBP, SIWP 1620 prior to set plug	4,140.0	4,142.0	10/17/2011	12/7/2011	Stage 6	
4 1/2" CBP, SIWP 1775 prior to set plug	4,390.0	4,392.0	10/13/2011	12/7/2011	Stage 5	
4 1/2" CBP, SIWP 1810 prior to set plug	4,640.0	4,642.0	10/9/2011	12/7/2011	Stage 4	
4 1/2" CBP, SIWP 2000 prior to set plug	4,970.0	4,972.0	10/5/2011	12/7/2011	Stage 3	
4 1/2" CBP, SIWP 3100 prior to set plug	5,475.0	5,477.0	9/28/2011	12/7/2011	Stage 2	
Fill, tag 7/24/2012	5,997.0	6,102.0	7/24/2012	7/24/2012	Tag w/ 1.750" blind-box	
Pumped off	6,101.0	6,101.8	12/8/2011			
Mill	6,101.8	6,103.2	12/8/2011			