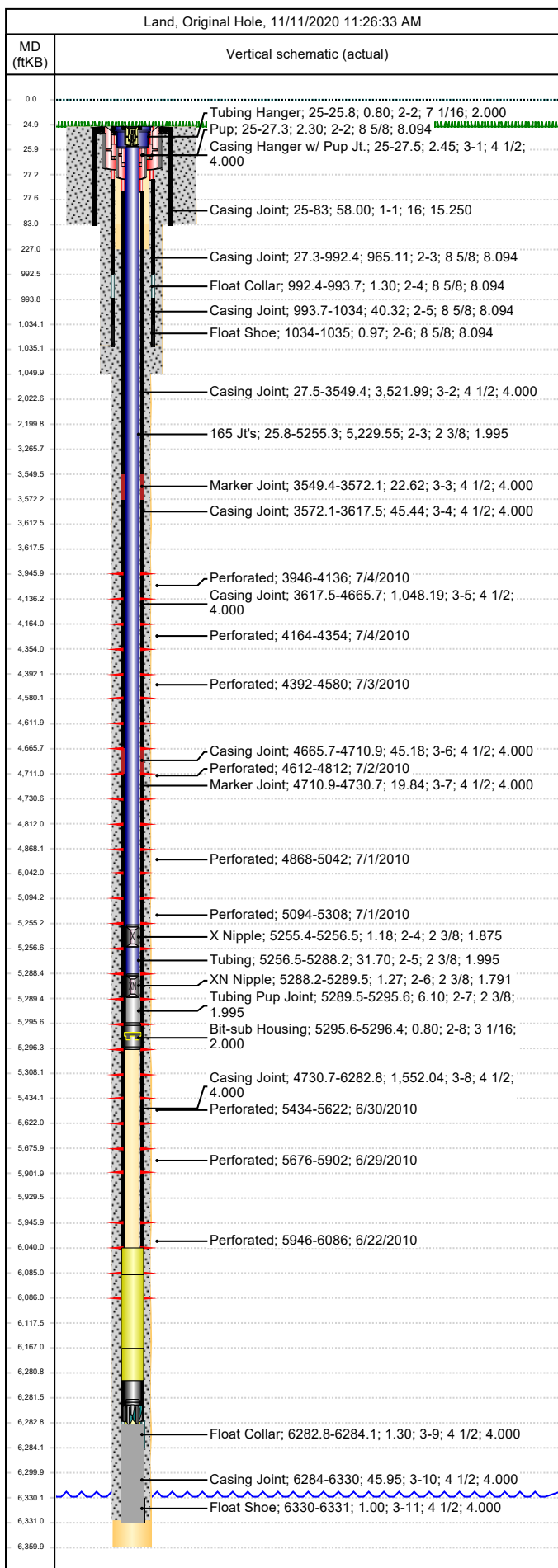




Wellbore Schematic

Well Name SKR-698-04-AV-04	Lease Chevron USA	Field Name Skinner Ridge	Business Unit Mid-Continent
-------------------------------	----------------------	-----------------------------	--------------------------------



Job Details		
Job Category	Start Date	Rig/Unit End Date
Well Services	4/25/2014	4/25/2014

Casing Strings					
Csg Des	OD (in)	Wt/Len (lb/ft)	Grade	Top Thread	Set Depth (MD) (ftKB)
Conductor	16	65.00	H-40		83
Surface	8 5/8	24.00	K-55		1035
Production Casing	4 1/2	11.60	N-80	LT&C	6331

Tubing Strings						
Tubing - Production set at 5,296.4ftKB on 9/14/2011 09:00						
Tubing Description	Run Date	String Length (ft)	Set Depth (MD) (ftKB)			
Tubing - Production	9/14/2011	5,296.40	5,296.4			
Item Des	Jts	OD (in)	Wt (lb/ft)	Grade	Len (ft)	Btm (ftKB)
KBGL					25.00	25.0
Tubing Hanger		7 1/16			0.80	25.8
165 Jt's	165	2 3/8	4.70	L-80	5,229.55	5,255.4
X Nipple		2 3/8			1.18	5,256.5
Tubing	1	2 3/8	4.70	L-80	31.70	5,288.2
XN Nipple		2 3/8			1.27	5,289.5
Tubing Pup Joint		2 3/8			6.10	5,295.6
Bit-sub Housing		3 1/16			0.80	5,296.4
Tubing Landed @						5,296.4

Perforations						
Date	Top (ftKB)	Btm (ftKB)	Shot Dens (shots/ft)	Entered Shot Total	Linked Zone	
7/4/2010	3,946.0	4,136.0	0.1	24	Mesa Verde - WMFK - Williams Fork, Original Hole	
7/4/2010	4,164.0	4,354.0	3.0	27	Mesa Verde - WMFK - Williams Fork, Original Hole	
7/3/2010	4,392.0	4,580.0	3.0	27	Mesa Verde - WMFK - Williams Fork, Original Hole	
7/2/2010	4,612.0	4,812.0	3.0	27	Mesa Verde - WMFK - Williams Fork, Original Hole	
7/1/2010	4,868.0	5,042.0	3.0	24	Mesa Verde - WMFK - Williams Fork, Original Hole	
7/1/2010	5,094.0	5,308.0	3.0	27	Mesa Verde - WMFK - Williams Fork, Original Hole	
6/30/2010	5,434.0	5,622.0	3.0	21	Mesa Verde - WMFK - Williams Fork, Original Hole	
6/29/2010	5,676.0	5,902.0	3.0	27	Mesa Verde - WMFK - Williams Fork, Original Hole	
6/22/2010	5,946.0	6,086.0	3.0	18	Mesa Verde - WMFK - Cameo Coal, Original Hole	

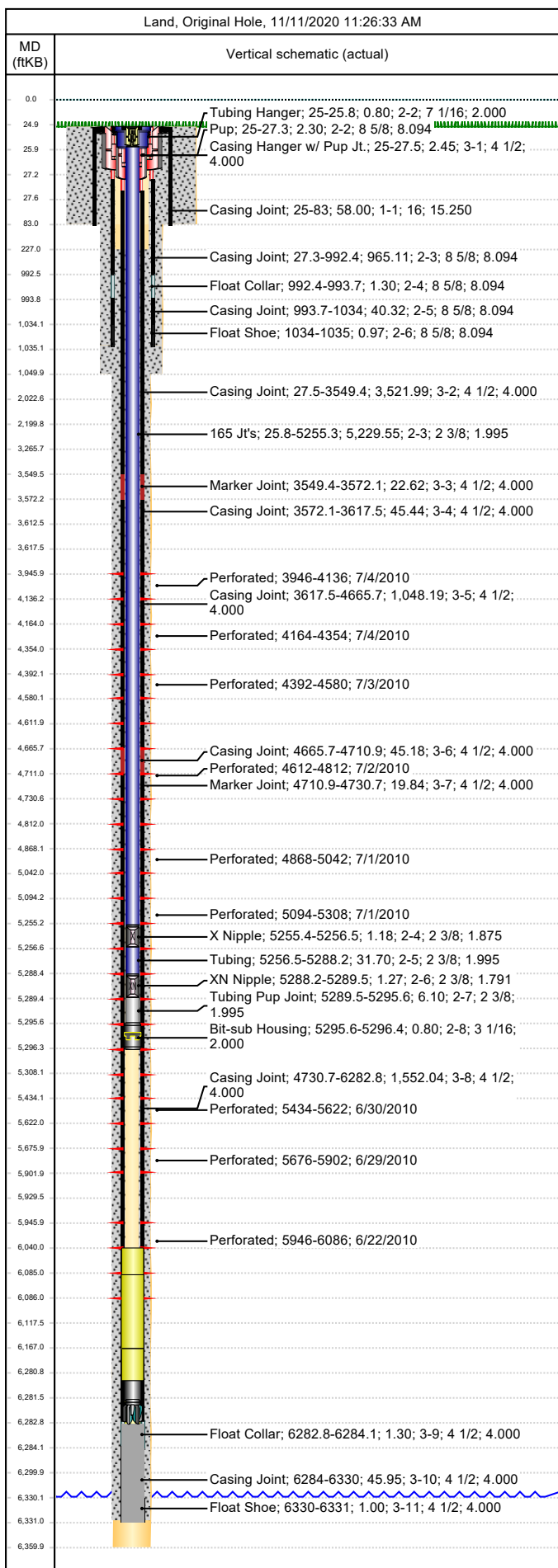
Other Strings			
Run Date	Pull Date	Set Depth (ftKB)	Com

Other In Hole					
Des	Top (ftKB)	Btm (ftKB)	Run Date	Pull Date	Com
Top plug	3,800.0	3,802.0	7/21/2010	8/3/2010	4 1/2" Solid top Bear Claw BP
Bridge Plug (Permanent) Fasdrill	4,150.0	4,151.0	7/4/2010	8/3/2010	4-1/2" Fasdrill composite plug.
Bridge Plug (Permanent) Fasdrill	4,366.0	4,367.0	7/4/2010	8/3/2010	4-1/2" Fasdrill composite plug.
Bridge Plug (Permanent) Fasdrill	4,594.0	4,595.0	7/3/2010	8/3/2010	4-1/2" Fasdrill composite plug.
Bridge Plug (Permanent) Fasdrill	4,842.0	4,843.0	7/2/2010	8/3/2010	4-1/2" Fasdrill composite plug.
Bridge Plug (Permanent) Fasdrill	5,070.0	5,071.0	7/1/2010	8/3/2010	4-1/2" Fasdrill composite plug.
Tubing Plunger, 2/24/2012	5,252.1	5,253.4	2/24/2012	11/27/2012	



Wellbore Schematic

Well Name SKR-698-04-AV-04	Lease Chevron USA	Field Name Skinner Ridge	Business Unit Mid-Continent
-------------------------------	----------------------	-----------------------------	--------------------------------



Other In Hole					
Des	Top (ftKB)	Btm (ftKB)	Run Date	Pull Date	Com
Bumper Spring, 2/24/2012	5,253.4	5,255.4	2/24/2012	11/27/2012	
Bumper Spring	5,254.2	5,255.4	7/1/2013	4/25/2014	
Bridge Plug (Permanent) Fasdrill	5,414.0	5,415.0	7/1/2010	8/4/2010	4-1/2" Fasdrill composite plug.
Bridge Plug (Permanent) Fasdrill	5,656.0	5,657.0	6/30/2010	8/5/2010	4-1/2" Fasdrill composite plug.
Bridge Plug (Permanent) Fasdrill	5,926.0	5,927.0	6/29/2010	8/5/2010	4-1/2" Fasdrill composite plug.
Fill Tag, 4/25/2014	6,040.0	6,085.0	4/25/2014		
Fill, 11/27/2012	6,085.0	6,167.0	11/27/2012		
Fill, 2/24/2012	6,167.0	6,281.0	2/24/2012		
Pumped off	6,280.8	6,281.6	8/5/2010		
Fill, 9/13/2011	6,280.8	6,282.8			Sample taken of sand fill.
Mill	6,281.6	6,282.8	8/5/2010		Pumped off mill
PBTD	6,282.8	6,331.0	8/5/2010		