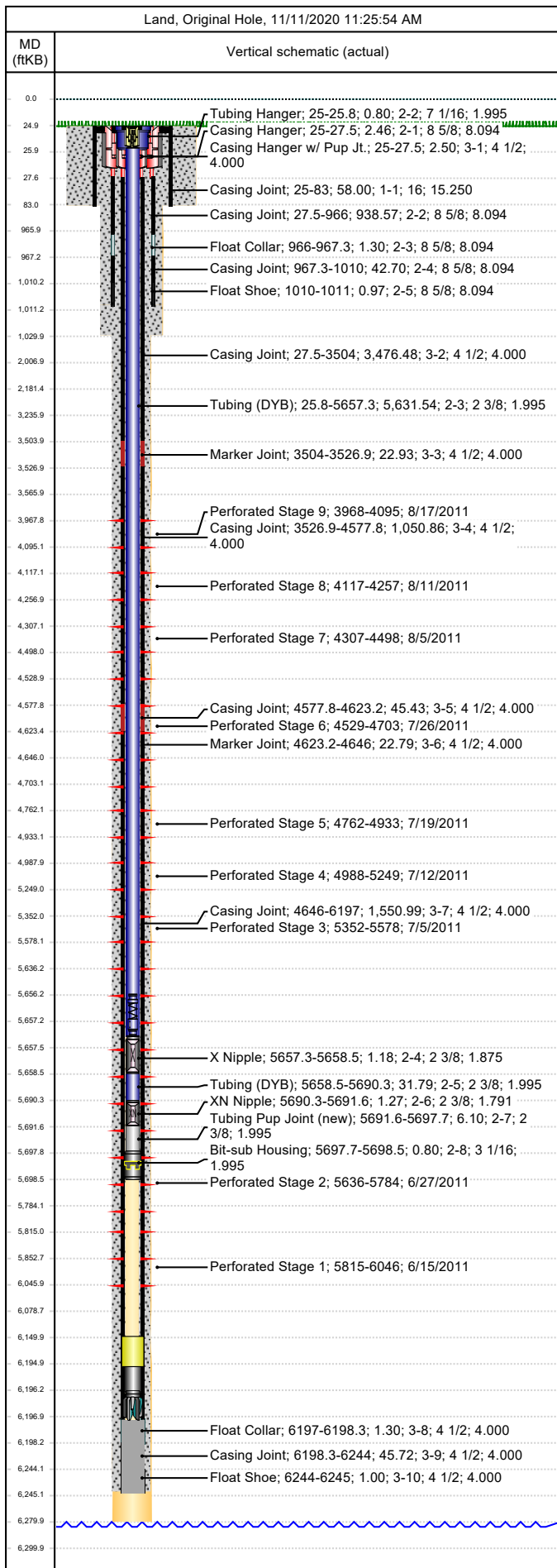




Wellbore Schematic

Well Name SKR-698-04-AV-02	Lease Chevron USA	Field Name Skinner Ridge	Business Unit Mid-Continent
-------------------------------	----------------------	-----------------------------	--------------------------------

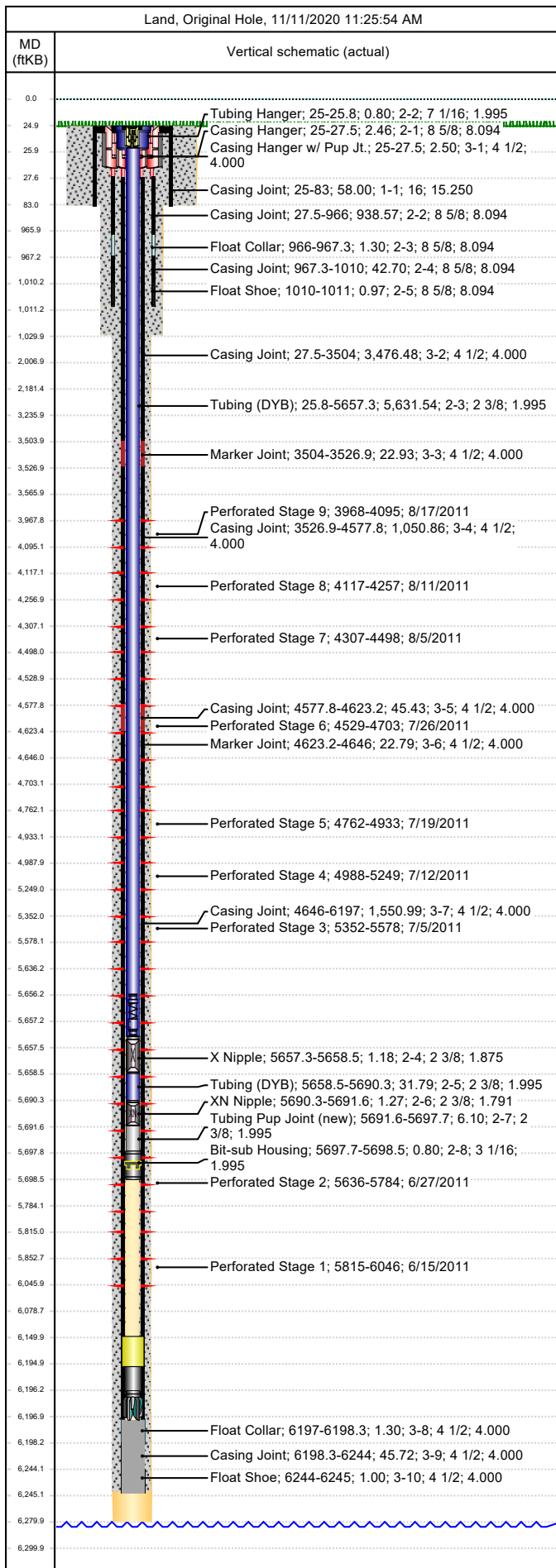


Job Details						
Job Category			Start Date		Rig/Unit End Date	
Well Services			5/22/2013		5/22/2013	
Casing Strings						
Csg Des	OD (in)	Wt/Len (lb/ft)	Grade	Top Thread	Set Depth (MD) (ftKB)	
Conductor	16	65.00	H-40		83	
Surface	8 5/8	24.00	J-55	ST&C	1011	
Production Casing	4 1/2	11.60	L-80	LT&C	6245	
Tubing Strings						
Tubing - Production set at 5,698.5ftKB on 4/30/2012 11:00						
Tubing Description		Run Date		String Length (ft)		Set Depth (MD) (ftKB)
Tubing - Production		4/30/2012		5,698.48		5,698.5
Item Des	Jts	OD (in)	Wt (lb/ft)	Grade	Len (ft)	Btm (ftKB)
KBGL					25.00	25.0
Tubing Hanger		7 1/16			0.80	25.8
Tubing (DYB)	180	2 3/8	4.70	L-80	5,631.54	5,657.3
X Nipple		2 3/8			1.18	5,658.5
Tubing (DYB)	1	2 3/8	4.70	L-80	31.79	5,690.3
XN Nipple		2 3/8			1.27	5,691.6
Tubing Pup Joint (new)		2 3/8	4.70	L-80	6.10	5,697.7
Bit-sub Housing		3 1/16			0.80	5,698.5
Tubing Landed @						5,698.5
Perforations						
Date	Top (ftKB)	Btm (ftKB)	Shot Dens (shots/ft)	Entered Shot Total	Linked Zone	
8/17/2011	3,968.0	4,095.0	3.0	24	Mesa Verde - WMFK - Williams Fork, Original Hole	
8/11/2011	4,117.0	4,257.0	3.0	24	Mesa Verde - WMFK - Williams Fork, Original Hole	
8/5/2011	4,307.0	4,498.0	3.0	27	Mesa Verde - WMFK - Williams Fork, Original Hole	
7/26/2011	4,529.0	4,703.0	3.0	27	Mesa Verde - WMFK - Williams Fork, Original Hole	
7/19/2011	4,762.0	4,933.0	3.0	27	Mesa Verde - WMFK - Williams Fork, Original Hole	
7/12/2011	4,988.0	5,249.0	3.0	27	Mesa Verde - WMFK - Williams Fork, Original Hole	
7/5/2011	5,352.0	5,578.0	3.0	27	Mesa Verde - WMFK - Williams Fork, Original Hole	
6/27/2011	5,636.0	5,784.0	3.0	27	Mesa Verde - WMFK - Williams Fork, Original Hole	
6/15/2011	5,815.0	6,046.0	3.0	27	Mesa Verde - WMFK - Cameo Coal, Original Hole	
Other Strings						
Run Date	Pull Date	Set Depth (ftKB)	Com			
Other In Hole						
Des	Top (ftKB)	Btm (ftKB)	Run Date	Pull Date	Com	
4 1/2" CBP	3,910.0	3,912.0	8/22/2011	8/7/2011	Kill Plug	
4 1/2" CFP	4,107.0	4,109.0	8/17/2011	8/7/2011	Stage 8	
4 1/2" CFP	4,277.0	4,279.0	8/11/2011	8/7/2011	Stage 8	
4 1/2" CFP	4,518.0	4,520.0	8/5/2011	8/7/2011	Stage 7	
4 1/2" CFP	4,725.0	4,727.0	7/26/2011	8/7/2011	Stage 6	
4 1/2" CFP	4,953.0	4,955.0	7/19/2011	8/7/2011	Stage 5	
4 1/2" CFP	5,269.0	5,271.0	7/12/2011	8/7/2011	Stage 4	
Tubing Plunger, 2/24/2012	5,305.4	5,306.7	2/24/2012	4/17/2012		
Bumper Spring, 2/24/2012	5,306.7	5,308.7	2/24/2012	4/17/2012		
4 1/2" CFP	5,598.0	5,600.0	7/5/2011	8/7/2011	Stage 3	
Bumper Spring	5,656.1	5,657.3	7/1/2013			
4 1/2" CFP	5,800.0	5,802.0	6/27/2011	8/7/2011	Stage 2	
Fill (Sand / Mud / Debris)	6,105.0		6/13/2019		Slickline Work	
Fill, 4/17/2012	6,118.0	6,197.0	4/14/2012	4/27/2012		



Wellbore Schematic

Well Name SKR-698-04-AV-02	Lease Chevron USA	Field Name Skinner Ridge	Business Unit Mid-Continent
-------------------------------	----------------------	-----------------------------	--------------------------------



Other In Hole					
Des	Top (ftKB)	Btm (ftKB)	Run Date	Pull Date	Com
Fill (Sand / Mud / Debris)	6,150.0	6,195.0	5/22/2013		
Pumped off	6,195.0	6,196.2	6/24/2011		Bit Sub
Mill	6,196.2	6,197.0	9/7/2011		Mill
PBTD	6,197.0	6,245.0	1/20/2009		