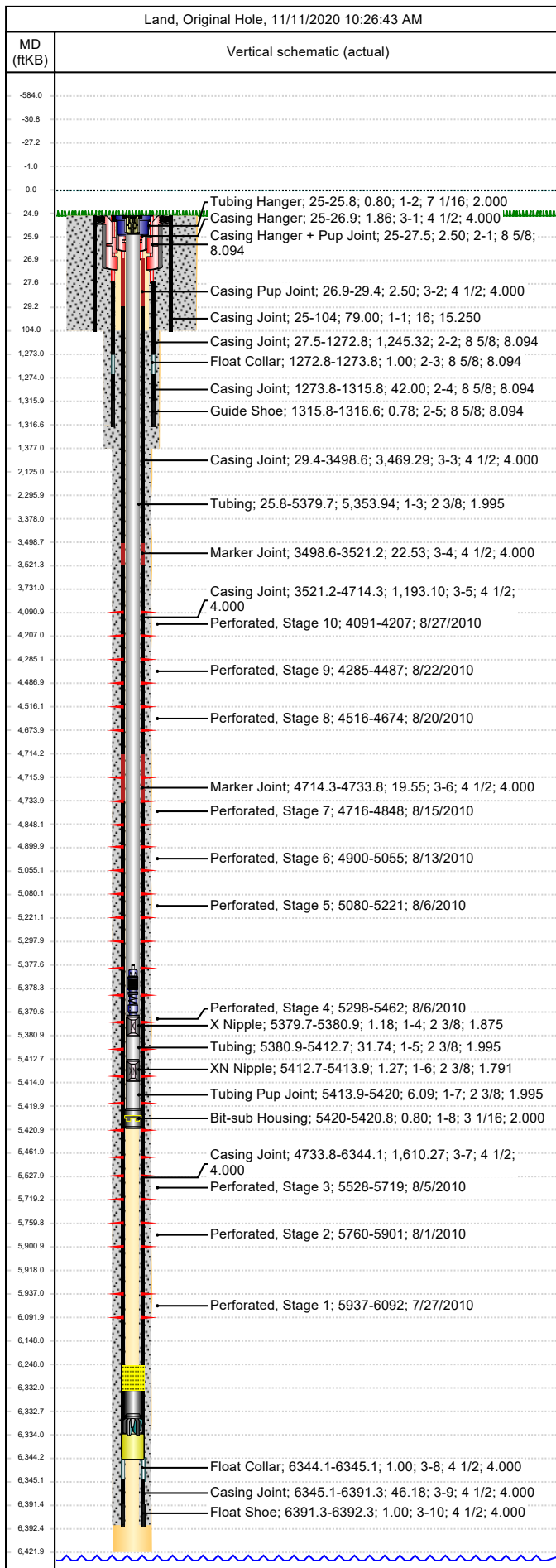




Wellbore Schematic

Well Name SKR-598-25-CV-05	Lease Chevron USA	Field Name Skinner Ridge	Business Unit Mid-Continent
-------------------------------	----------------------	-----------------------------	--------------------------------

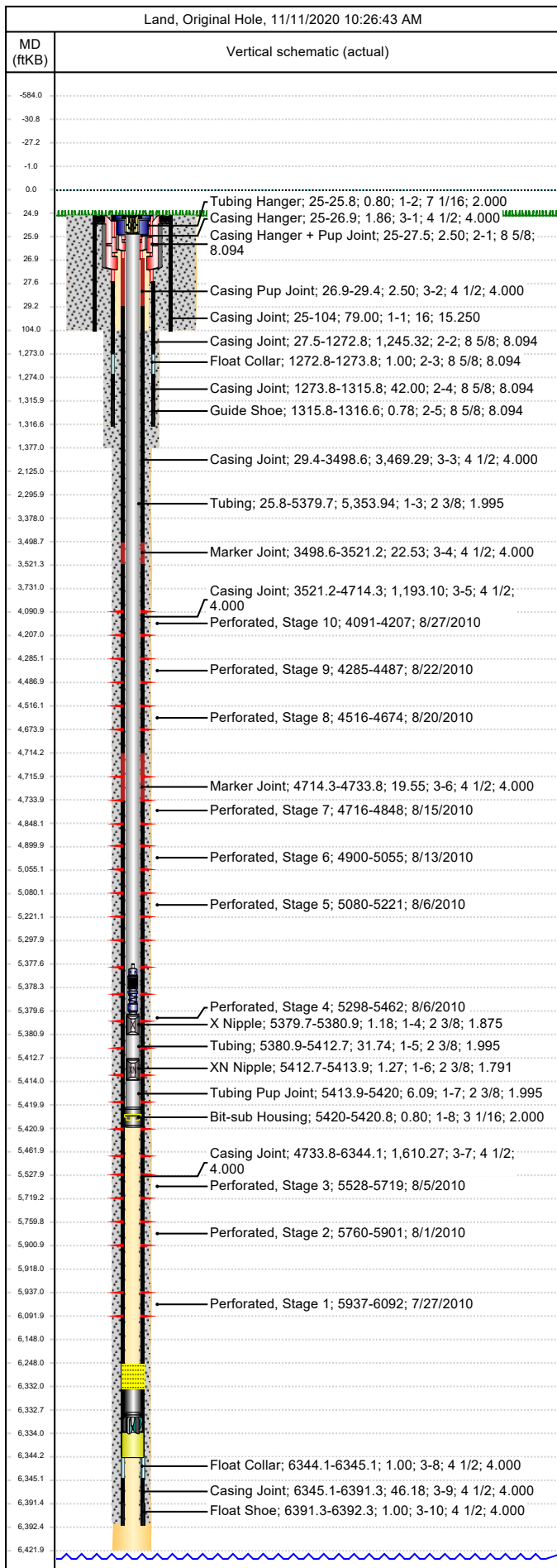


Job Details						
Job Category			Start Date		Rig/Unit End Date	
Well Services			2/10/2015		2/10/2015	
Casing Strings						
Csg Des	OD (in)	Wt/Len (lb/ft)	Grade	Top Thread	Set Depth (MD) (ftKB)	
Conductor	16	65.00	H-40		104	
Surface	8 5/8	24.00	K-55		1316.6	
Production Casing	4 1/2	11.60	N-80		6392.3	
Tubing Strings						
Tubing - Production set at 5,420.8ftKB on 10/5/2010 12:00						
Tubing Description			Run Date	String Length (ft)	Set Depth (MD) (ftKB)	
Tubing - Production			10/5/2010	5,420.82	5,420.8	
Item Des	Jts	OD (in)	Wt (lb/ft)	Grade	Len (ft)	Btm (ftKB)
KBGL					25.00	25.0
Tubing Hanger		7 1/16			0.80	25.8
Tubing	169	2 3/8	4.70	L-80	5,353.94	5,379.7
X Nipple		2 3/8			1.18	5,380.9
Tubing	1	2 3/8	4.70	L-80	31.74	5,412.7
XN Nipple		2 3/8			1.27	5,413.9
Tubing Pup Joint		2 3/8	4.70	L-80	6.09	5,420.0
Bit-sub Housing		3 1/16			0.80	5,420.8
Tubing Landed @						5,420.8
Perforations						
Date	Top (ftKB)	Btm (ftKB)	Shot Dens (shots/ft)	Entered Shot Total	Linked Zone	
8/27/2010	4,091.0	4,207.0	3.0	24	Mesa Verde - WMFK - Williams Fork, Original Hole	
8/22/2010	4,285.0	4,487.0	3.0	27	Mesa Verde - WMFK - Williams Fork, Original Hole	
8/20/2010	4,516.0	4,674.0	3.0	27	Mesa Verde - WMFK - Williams Fork, Original Hole	
8/15/2010	4,716.0	4,848.0	3.0	27	Mesa Verde - WMFK - Williams Fork, Original Hole	
8/13/2010	4,900.0	5,055.0	3.0	21	Mesa Verde - WMFK - Williams Fork, Original Hole	
8/6/2010	5,080.0	5,221.0	3.0	27	Mesa Verde - WMFK - Williams Fork, Original Hole	
8/6/2010	5,298.0	5,462.0	3.0	24	Mesa Verde - WMFK - Williams Fork, Original Hole	
8/5/2010	5,528.0	5,719.0	3.0	21	Mesa Verde - WMFK - Williams Fork, Original Hole	
8/1/2010	5,760.0	5,901.0	3.0	27	Mesa Verde - WMFK - Williams Fork, Original Hole	
7/27/2010	5,937.0	6,092.0	3.0	21	Mesa Verde - WMFK - Cameo Coal, Original Hole	
Other Strings						
Run Date	Pull Date	Set Depth (ftKB)	Com			
Other In Hole						
Des	Top (ftKB)	Btm (ftKB)	Run Date	Pull Date	Com	
4 1/2" CBP, top plug	4,041.0	4,043.0	8/30/2010	10/4/2010	Top CBP	
4 1/2" CFP	4,265.0	4,267.0	8/27/2010	10/4/2010		
4 1/2" CFP	4,501.0	4,503.0	8/22/2010	10/4/2010		
4 1/2" CFP	4,696.0	4,698.0	8/20/2010	10/4/2010		
4 1/2" CFP	4,880.0	4,882.0	8/15/2010	10/4/2010		
4 1/2" CFP	5,067.0	5,069.0	8/13/2010	10/4/2010		
4 1/2" CFP	5,278.0	5,280.0	8/6/2010	10/4/2010		
Tubing Plunger	5,377.5	5,378.3	2/10/2015		Replaced plunger that had been run on 5/6/2011 11:30	
Bumper Spring	5,378.3	5,379.7	2/10/2015		Replaced spring that had been run on 5/6/2011 11:30	
4 1/2" CFP	5,508.0	5,510.0	8/6/2010	10/4/2010		
4 1/2" CFP	5,740.0	5,742.0	8/5/2010	10/4/2010		



Wellbore Schematic

Well Name SKR-598-25-CV-05	Lease Chevron USA	Field Name Skinner Ridge	Business Unit Mid-Continent
-------------------------------	----------------------	-----------------------------	--------------------------------



Other In Hole					
Des	Top (ftKB)	Btm (ftKB)	Run Date	Pull Date	Com
4 1/2" CFP	5,925.0	5,927.0	8/1/2010	10/4/2010	
Fill (Sand / Mud / Debris)	6,248.0	6,332.0	2/10/2015		
Pumped off	6,332.0	6,332.8	9/13/2010		BIT SUB - PUMPED OFF
Mill	6,332.8	6,334.0	9/13/2010		3 7/8" MILL - PUMPED OFF
Fill, 10/5/2010	6,334.0	6,344.1	9/3/2010		