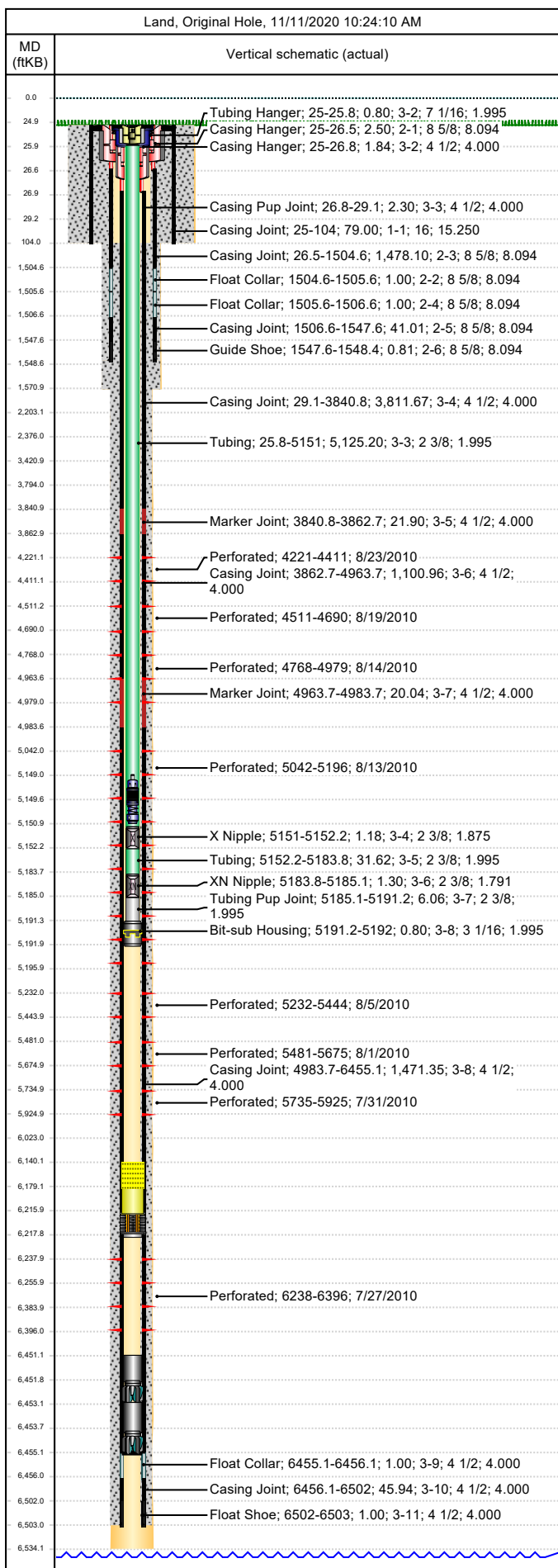




# Wellbore Schematic

Well Name SKR-598-25-CV-01	Lease Chevron USA	Field Name Skinner Ridge	Business Unit Mid-Continent
-------------------------------	----------------------	-----------------------------	--------------------------------

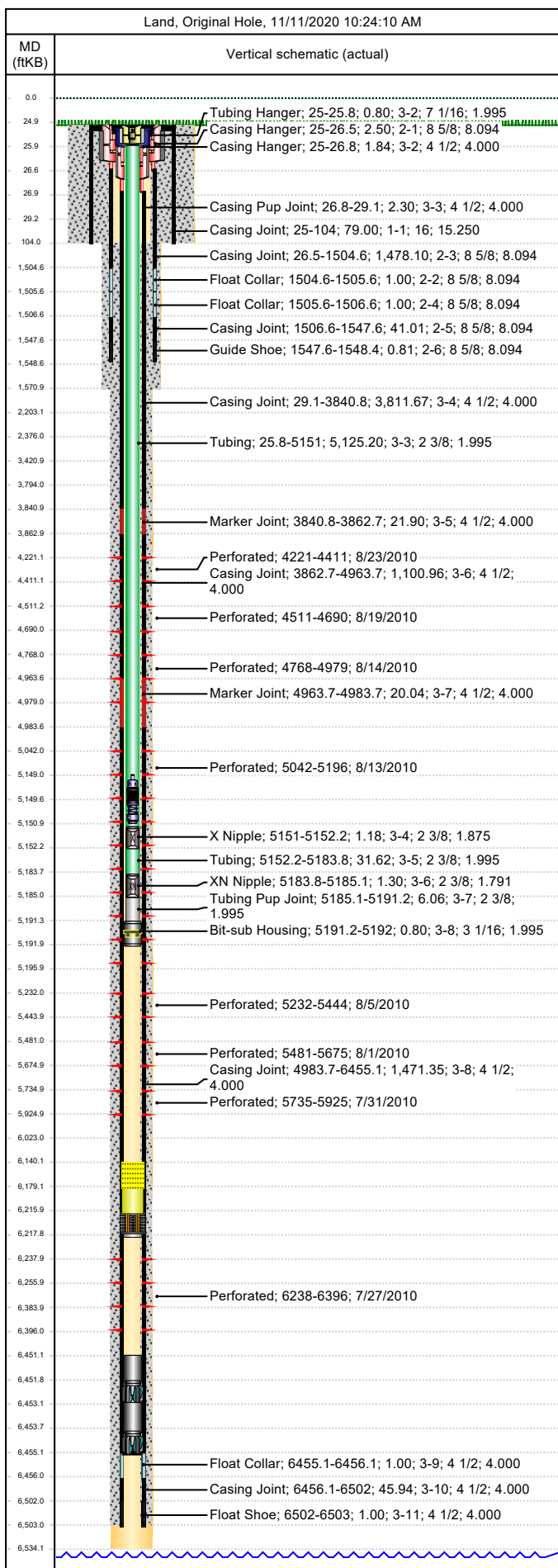


Job Details						
Job Category			Start Date		Rig/Unit End Date	
Well Services			1/27/2011		1/27/2011	
Casing Strings						
Csg Des	OD (in)	Wt/Len (lb/ft)	Grade	Top Thread	Set Depth (MD) (ftKB)	
Conductor	16	65.00	H-40		104	
Surface	8 5/8	24.00	K-55		1548.4	
Production Casing	4 1/2	11.60	N-80		6503	
Tubing Strings						
Tubing - Production set at 5,192.0ftKB on 12/15/2010 12:30						
Tubing Description		Run Date	String Length (ft)	Set Depth (MD) (ftKB)		
Tubing - Production		12/15/2010	5,191.96	5,192.0		
Item Des	Jts	OD (in)	Wt (lb/ft)	Grade	Len (ft)	Btm (ftKB)
KBGL					25.00	25.0
Tubing Hanger		7 1/16			0.80	25.8
Tubing	162	2 3/8	5.80	L-80	5,125.20	5,151.0
X Nipple		2 3/8			1.18	5,152.2
Tubing	1	2 3/8	5.80	L-80	31.62	5,183.8
XN Nipple		2 3/8			1.30	5,185.1
Tubing Pup Joint		2 3/8			6.06	5,191.2
Bit-sub Housing		3 1/16			0.80	5,192.0
Tubing Landed @ 5,192.0						
Perforations						
Date	Top (ftKB)	Btm (ftKB)	Shot Dens (shots/ft)	Entered Shot Total	Linked Zone	
8/23/2010	4,221.0	4,411.0	3.0	27	Mesa Verde - WMFK - Williams Fork, Original Hole	
8/19/2010	4,511.0	4,690.0	3.0	24	Mesa Verde - WMFK - Williams Fork, Original Hole	
8/14/2010	4,768.0	4,979.0	3.0	27	Mesa Verde - WMFK - Williams Fork, Original Hole	
8/13/2010	5,042.0	5,196.0	3.0	24	Mesa Verde - WMFK - Williams Fork, Original Hole	
8/5/2010	5,232.0	5,444.0	3.0	21	Mesa Verde - WMFK - Williams Fork, Original Hole	
8/1/2010	5,481.0	5,675.0	3.0	21	Mesa Verde - WMFK - Williams Fork, Original Hole	
7/31/2010	5,735.0	5,925.0	3.0	24	Mesa Verde - WMFK - Williams Fork, Original Hole	
7/27/2010	6,238.0	6,396.0	3.0	21	Mesa Verde - Iles - Rollins, Original Hole	
Other Strings						
Run Date	Pull Date	Set Depth (ftKB)	Com			
Other In Hole						
Des	Top (ftKB)	Btm (ftKB)	Run Date	Pull Date	Com	
4 1/2" CBP	4,181.0	4,183.0	8/30/2010	9/23/2010	Top solid CBP	
4 1/2" CFP	4,480.0	4,482.0	8/23/2010	9/23/2010		
4 1/2" CFP	4,748.0	4,750.0	8/19/2010	9/23/2010		
4 1/2" CFP	4,990.0	4,992.0	8/14/2010	9/23/2010	Tag @ 4998', set CFP 4990'	
Tubing Plunger	5,148.8	5,149.7	1/27/2011			
Bumper Spring	5,149.6	5,150.8	1/27/2011			
4 1/2" CFP	5,214.0	5,216.0	8/13/2010	9/24/2010		
4 1/2" CFP	5,463.0	5,465.0	8/5/2010	9/24/2010		
Bridge Plug (Permanent) Fasdrill	5,715.0	5,716.0	8/1/2010	9/24/2010		
Bridge Plug (Permanent) Fasdrill	5,950.0	5,951.0	7/31/2010	9/24/2010		
Fill (Sand / Mud / Debris)	6,140.0	6,179.0	6/12/2019		Slickline Work	
Fill, 1/27/2011	6,179.0	6,216.0	1/27/2011			
Cast Iron Cement Retainer	6,216.0	6,218.0	12/13/2010			



# Wellbore Schematic

Well Name SKR-598-25-CV-01	Lease Chevron USA	Field Name Skinner Ridge	Business Unit Mid-Continent
-------------------------------	----------------------	-----------------------------	--------------------------------



Other In Hole					
Des	Top (ftKB)	Btm (ftKB)	Run Date	Pull Date	Com
Pumped off	6,451.0	6,451.8	9/27/2010		
Mill	6,451.8	6,453.0	9/27/2010		
Pumped off	6,453.0	6,453.8	9/27/2010		
Mill	6,453.8	6,455.0	9/27/2010		