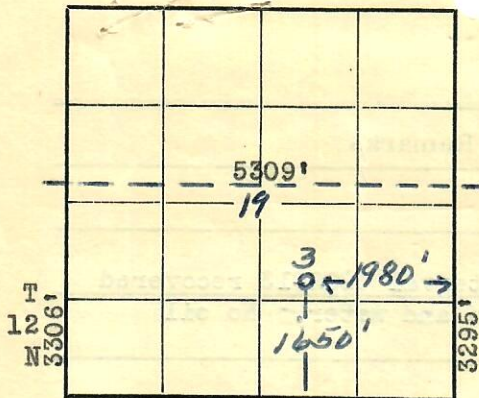


Locat
Well
CorrectlyFile in icate on Fee and Patented lands and in
quadruplicate on State and School lands, with

OFFICE OF DIRECTOR

OIL AND GAS CONSERVATION COMMISSION,
STATE OF COLORADORECEIVED
JAN 3-1956OIL & GAS
CONSERVATION COMMISSION

LOG OF OIL AND GAS WELL

R 55 W 5320'

Field PeavyCompany Delfern Oil CompanyCounty LoganAddress 1706 Fourteenth St., Lubbock, TexasLease UPRR PeavyWell No. 3Sec. 19Twp. 12-NRge. 55-WMeridian 6 P.M. State or Pat. PatLocation 1650 Ft. (S) of Section Line and 1980 Ft. (W) of Section line of Elevation 4848.5 GR
(Derrick floor relative to sea level)

The information given herewith is a complete and correct record of the well and all work done thereon so far as can be determined from all available records.

Signed H. J. AltendorfDate December 26, 1955Title Engineer

The summary on this page is for the condition of the well as above date.

Commenced drilling 12-6-55, 19 Finished drilling 12-16-55, 19

OIL AND GAS SANDS OR ZONES

No. 1, from None to Dry Hole No. 4, from to
No. 2, from to No. 5, from to
No. 3, from to No. 6, from to

IMPORTANT WATER SANDS

No. 1, from to No. 3, from to
No. 2, from to No. 4, from to

CASING RECORD

SIZE	WT. PER FOOT	MAKE	WHERE LANDED	NO. OF SKS. CEMENT	STOOD HOURS	PRESSURE TEST PSI
10-3/4"	32.75	Lone Star	303	300	24	500#
No oil string casing was run. The "D" and "J" sands were found non-oil productive						

COMPLETION DATA

Total Depth 6262 ft. Cable Tools from to Rotary Tools from Surface to 6262
Casing Perforations (prod. depth) from to ft. No. of holes
Acidized with gallons. Other physical or chemical treatment of well to induce flow
Shooting Record NoneProd. began Dry Hole 19 Making bbls./day of A. P. I. Gravity Fluid on Pump ☐
Tub. Pres. lbs./sq. in. Csg. Pres. lbs./sq. in. Gas Vol. Mcf. Gas Oil Ratio Choke. ☐
Length Stroke in. Strokes per Min. Diam. Pump in.
B. S. & W. %. Gas Gravity BTU's/Mcf. Gals. Gasoline/Mcf.

WELL DATA

Indicate (yes or no) whether or not the following information was obtained.

Electrical Log Yes Date 12-15- 19 55 Straight Hole Survey Type
Date 19 Other Types of Hole Survey Type
Time Drilling Record Yes (Note—Any additional data can be shown on reverse side.)
Core Analysis Yes Depth 6211 to 6215
to

FORMATION RECORD

Show all formations, especially all sands and character and contents thereof.

FORMATION	TOP	BOTTOM	REMARKS
Niobrara	5170'	5530'	
Fort Hays	5530'	5800'	
Greenhorn	5800'	5965'	
Bentonite Marker			
Brown Lime	5965'		

(Continue on reverse side)

AJJ	
DVR	
FJK	
WRS	
HHM	
AH	
JJD	<input checked="" type="checkbox"/>
FILE	

FORMATION RECORD

[illegible]