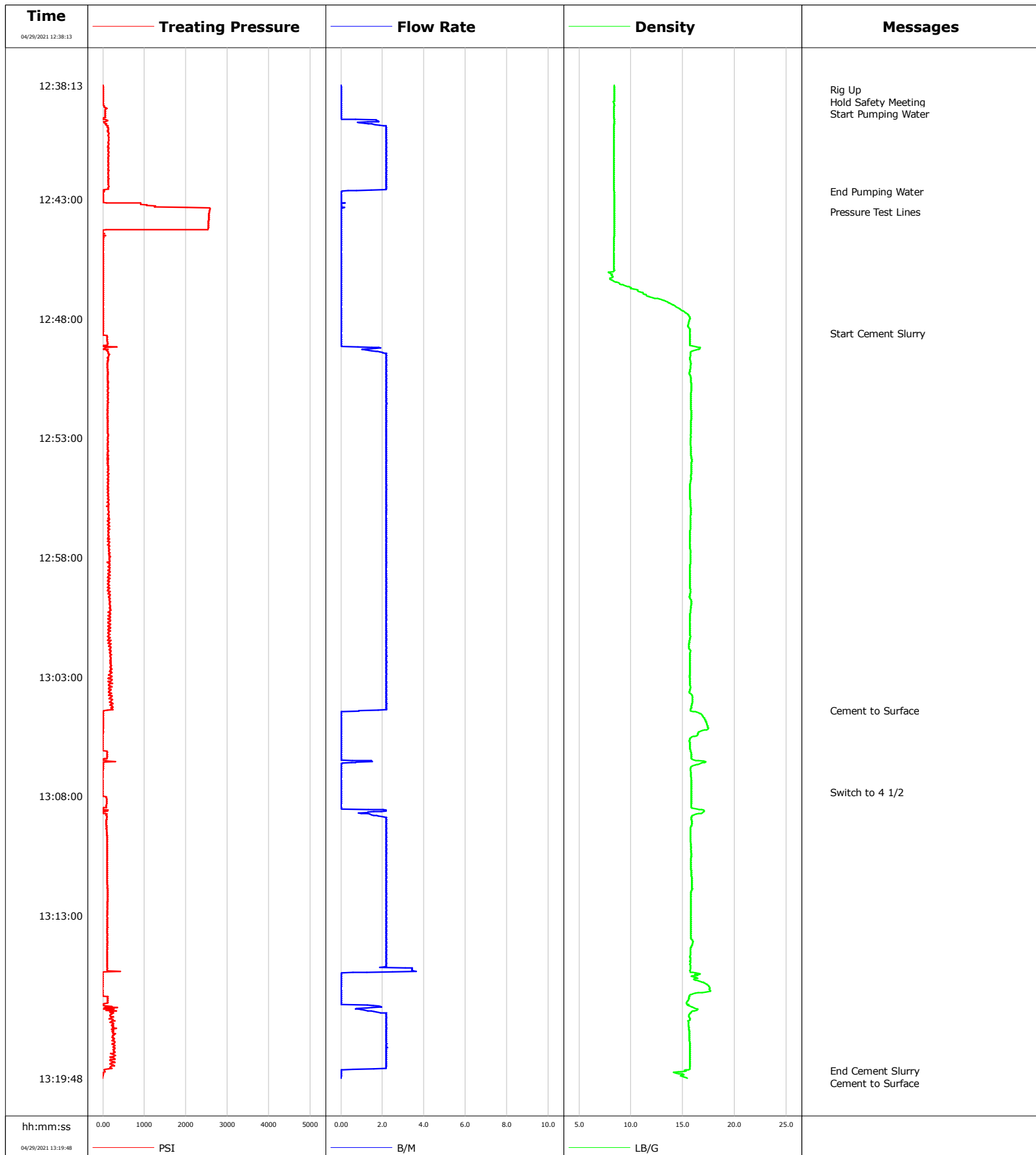


Well	Weld 21-2	Client	Oxy
Field	DJ	SIR No.	EAJ7-02026
Engineer	Matt Leiker	Job Type	Plug
Country	United States	Job Date	04-27-2021



Cementing Service Report

				Customer Oxy			Job Number EAJ7-02026							
Well Weld 21-2			Location (legal)			Schlumberger Location Cheyenne			Job Start Apr/27/2021					
Field DJ		Formation Name/Type			Deviation deg		Bit Size in		Well MD ft		Well TVD ft			
County Weld		State/Province Colorado			BHP psi		BHST degF		BHCT degF		Pore Press. Gradient lb/gal			
Well Master		API/UWI												
Rig Name Brigade 3		Drilled For Oil		Service Via Land		Casing/Liner								
						Depth, ft		Size, in		Weight, lb/ft		Grade		
Offshore Zone		Well Class Old		Well Type Workover										
Drilling Fluid Type		Max. Density lb/gal		Plastic Viscosity cP		Tubing/Drill Pipe								
						T/D		Depth, ft		Size, in		Weight, lb/ft		
												Grade		
												Thread		
Service Line Cementing		Job Type Plug					T		830.0		2.4		4.7	
									0.0		0.0		0.0	
Max. Allowed Tub. Press psi		Max. Allowed Ann. Press psi		WH Connection 2 3/8" 4.7# T/S		Perforations/Open Hole								
						Top, ft		Bottom, ft		shot/ft		No. of Shots		
						ft		ft						
						ft		ft				Diameter		
						ft		ft				in		
						Treat Down Tubing		Displacement 0.0 bbl		Packer Type		Packer Depth ft		
						Tubing Vol. bbl		Casing Vol. bbl		Annular Vol. bbl		Openhole Vol. bbl		
Casing/Tubing Secured <input checked="" type="checkbox"/>		1 Hole Vol. Circulated prior to Cement <input checked="" type="checkbox"/>				Casing Tools				Squeeze Job				
Lift Pressure psi						Shoe Type				Squeeze Type				
Pipe Rotated <input type="checkbox"/>		Pipe Reciprocated <input type="checkbox"/>				Shoe Depth ft				Tool Type				
No. Centralizers		Top Plugs		Bottom Plugs		Stage Tool Type				Tool Depth ft				
Cement Head Type						Stage Tool Depth ft				Tail Pipe Size in				
Job Scheduled For Apr/29/2021 10:30		Arrived on Location Apr/29/2021 10:15		Leave Location Apr/29/2021 12:00		Collar Type				Tail Pipe Depth ft				
						Collar Depth ft				Sqz. Total Vol. bbl				
Date	Time 24-hr clock	Treating Pressure PSI		Flow Rate LB/G		Density PSI		Message						
04/29/2021	12:38:13	5		0.00		0		Started Acquisition						
04/29/2021	12:38:25	0		0.00		0		Rig Up						
04/29/2021	12:39:07	32		0.00		0		Start Pumping Water						
04/29/2021	12:42:40	37		0.00		0		End Pumping Water						
04/29/2021	12:43:13	906		0.00		0								
04/29/2021	12:43:32	2563		0.00		0		Pressure Test Lines						
04/29/2021	12:48:13	5		0.00		0								
04/29/2021	12:48:37	5		0.00		0		Start Cement Slurry						
04/29/2021	12:53:13	114		0.00		0								
04/29/2021	12:58:13	114		0.00		0								
04/29/2021	13:03:13	133		0.00		0								
04/29/2021	13:04:25	27		0.00		0		Cement to Surface						
04/29/2021	13:07:50	-9		0.00		0		Switch to 4 1/2						
04/29/2021	13:08:13	92		0.00		0								
04/29/2021	13:13:13	110		0.00		0								
04/29/2021	13:18:13	261		0.00		0								
04/29/2021	13:19:30	41		0.00		0		End Cement Slurry						

Well Weld 21-2	Field DJ	Job Start Apr/27/2021	Customer Oxy	Job Number EAJ7-02026
--------------------------	--------------------	---------------------------------	------------------------	---------------------------------

Post Job Summary

Average Pump Rates, bbl/min					Volume of Fluid Injected, bbl						
Slurry 2.1	N2		Mud	Maximum Rate 3.6	Total Slurry 40.0	Mud 0.0		Spacer 5.0	N2		
Treating Pressure Summary, psi					Breakdown Fluid						
Maximum 2582	Final -5	Average 181	Bump Plug to	Breakdown	Type		Volume bbl		Density lb/gal		
Avg. N2 Percent %		Designed Slurry Volume 40.0 bbl		Displacement 0.0 bbl		Mix Water Temp 72 degF		Cement Circulated to Surface?	<input checked="" type="checkbox"/>	Volume bbl	
								Washed Thru Perfs		<input type="checkbox"/>	To ft
Customer or Authorized Representative Socorro Olivas				Schlumberger Supervisor Matt Leiker				Circulation Lost	<input type="checkbox"/>	Job Completed	<input checked="" type="checkbox"/>
								-		-	



Customer: OXY

Date: 7/13/2022

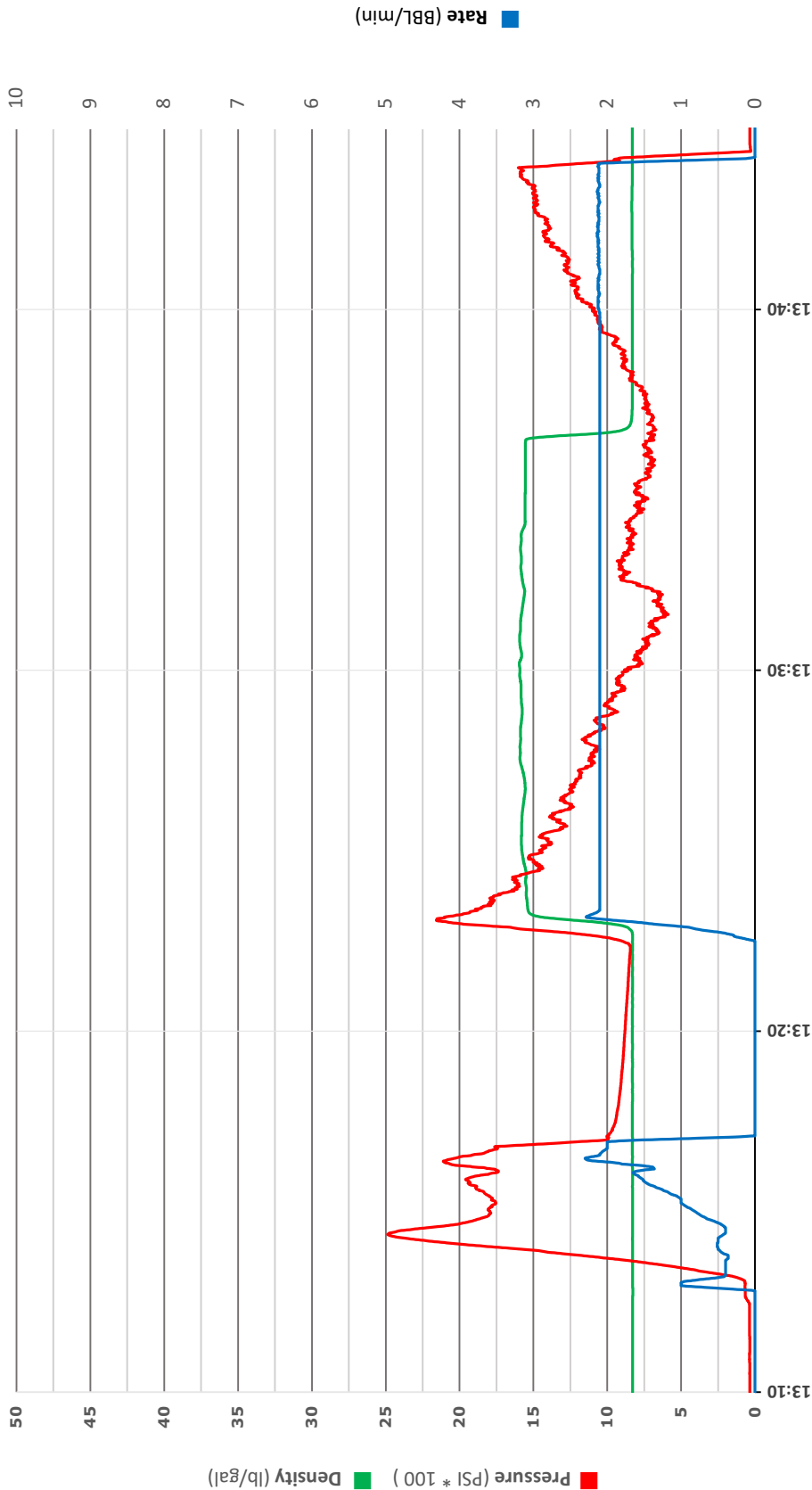
Ticket: 129320

Location: FREDERICK, CO

Well Name: WELD 21-2

Job Type: SQUEEZE 4960'

Magnum Unit #: 1014



US Treatment Report



Customer: OCCIDENTAL PETROLEUM CORP.
Rep: Junior (Ismael) Salinas **Ric:** Ensian 316
Supervisor: VITALIJS NEVERDASOV **Well:** WELD 21-2

Job #: JOB00129320
Job Date: 7/13/2022
Time Requested: 13:00

Job Type: US Remedial
 Retainer-Squeeze **UWI:** WELD 21-2
Surface: 05-123-24550

Time Arrived: 12:30
Time Released: 14:00

100 sk MAG G 15.8 + 0.40% MCGC-1 + 2.00% MCA-4 + 0.25% MCFL-7 + 0.30% MCFR-2 + 0.10% MCDF-P

Yield: 1.52 ft³/sk 27.1 Mix Water: 6.16 gal/sk = 497gal

BHCT (F)	225	BHST (F)	225	Production Casing Size (in)	4.5
Production Casing Grade	TBD	Production Casing Weight (lb/ft)	11.6	Tubing Size (in)	2.375
Tubing Grade	TBD	Tubing Weight (lb/ft)	4.7	Max Pressure (psi)	4000
Perfs Set 1 (ft)	4730	TMD (ft)	4690	Tool Depth (ft)	3670
Tool Type	Retainer	TVD (ft)	3710		

Treatment Info: Sacks Used: 100 Sacks Not Used: 0

Preflush: 4bbls Fresh Water & 5bbls Fresh Water

Circulation Time:

Slurry Temp: 82 Bulk Sample: Yes
 Water Temp: 64 Water Sample: Yes
 Bulk Temp: 65 Slurry Sample: Yes
 Air Temp: 95 Air Pressure

Slurry Returns: Plug Bumped: Pump Out Lines: Yes Float Held:
 Cement Class: Type III Humidity: 20 Precipitation:

Displace:

Time	Pressure psi	Annular Pressure psi	Volume Per Stage bbls	Total Stage Volume bbls	Rate bbls/min	Treatment Detail
13:00	0.00					Safety Meeting - PRE JOB SAFETY MEETING WITH ALL PERSONEL
13:10	1,880.00		4		2.0	INJECTION TEST
13:20	896.00		27.1		2.0	Pump Slurry - BATCH/ WEIGHT/ PUMP 100 SKS @ 15.8 PPG. YEID 1.52
13:33	870.00		17.1		2.0	Displace - FRESH WATER DISPLACEMENT.
13:42	650.00			0		Stop Pumping - SHUTDOWN/ STING OUT/ LEAVING 1 BBL ON TOP OF RETAINER. CALCULATED TOP OF CEMENT @ 4626'.
14:00	0.00					Wash Up Truck



US Treatment Report

Customer: OCCIDENTAL PETROLEUM CORP.		Job #: JOB00129318
Rep: Junior (Ismael) Salinas	Rig: Ensign 316	Job Date: Jul 13 @ 07:00
Supervisor: VITALIJS NEVERDASOVS	Well: WELD 21-2	Time Requested: Jul 13 @ 07:00
Job Type: US Remedial Retainer-Squeeze	UWI: WELD 21-2	Time Arrived: Jul 13 @ 07:00
	Surface: 05-123-24550	Time Released: Jul 13 @ 10:00

150 sk MAG G 15.8 + 0.40% MCGC-1 + 0.40% MCFL-7 + 0.20% MCR-1 + 0.30% MCFR-2 + 0.10% MCDF-P

Yield: 1.52 ft³/sk = 40.61bbls Mix Water: 4.97 gal/sk = 745.5gal

BHCT (F)	225	BHST (F)	225	Production Casing Size (in)	4.5
Production Casing Grade	TBD	Production Casing Weight (lb/ft)	11.6	Tubing Size (in)	2.375
Tubing Grade	TBD	Tubing Weight (lb/ft)	4.7	Max Pressure (psi)	4000
Perfs Set 1 (ft)	7180	TMD (ft)	7130	Tool Depth (ft)	7130
Tool Type	Retainer	TVD (ft)	7480		

Treatment Info: Sacks Used: 150 Sacks Not Used: 0

Preflush: 5bbls Fresh Water & 5bbls Fresh Water

Displace:

			Circulation Time:	
		Slurry Temp:	73	Bulk Sample: Yes
		Water Temp:	64	Water Sample: Yes
		Bulk Temp:	60	Slurry Sample: Yes
		Air Temp:	86	Air Pressure
Slurry Returns:	Plug Bumped:	Pump Out Lines:	Yes	Float Held:
Cement Class:	Type III	Humidity:	25	Precipitation:

Time	Pressure psi	Annular Pressure psi	Volume Per Stage bbls	Total Stage Volume bbls	Rate bbls/mi n	Treatment Detail
06:30	0.00					Arrive on Location - ARRIVED ON LOCATION.
07:00	0.00					TEST WATER: TEMP 60/ CHLORIDES 150/ PH 7
07:33	0.00					Safety Meeting - PRE JOB SAFETY MEETING WITH ALL PERSONEL
08:12	250.00		5	3	2.0	PUMP FRESH WATER AHEAD
08:18	4,850.00		.2		.5	Start Pressure Test - FILL LINES AND PRESSURE TEST
08:26	2,180.00		40.6		2.0	Pump Slurry - BATCH/ WEIGHT/ PUMP 150 SKS @ 15.8 PPG. YEID 1.52. SPOT FIRST 27 BBLS/ SHUT DOWN/STING IN/ FINISHED PUMPING CEMENT
08:48	4,050.00		21		2.0	Displace - FRESH WATER DISPLACEMENT.
09:20	0.00			0		Stop Pumping - SHUTDOWN/ STING OUT LEAVING 5 BBLS OF SLURRY ON TOP OF RETAINER. CALCULATED TOP OF CEMENT @ 6809'.
09:30	0.00					Wash Up Truck



Customer: OXY

Date: 7/13/2022

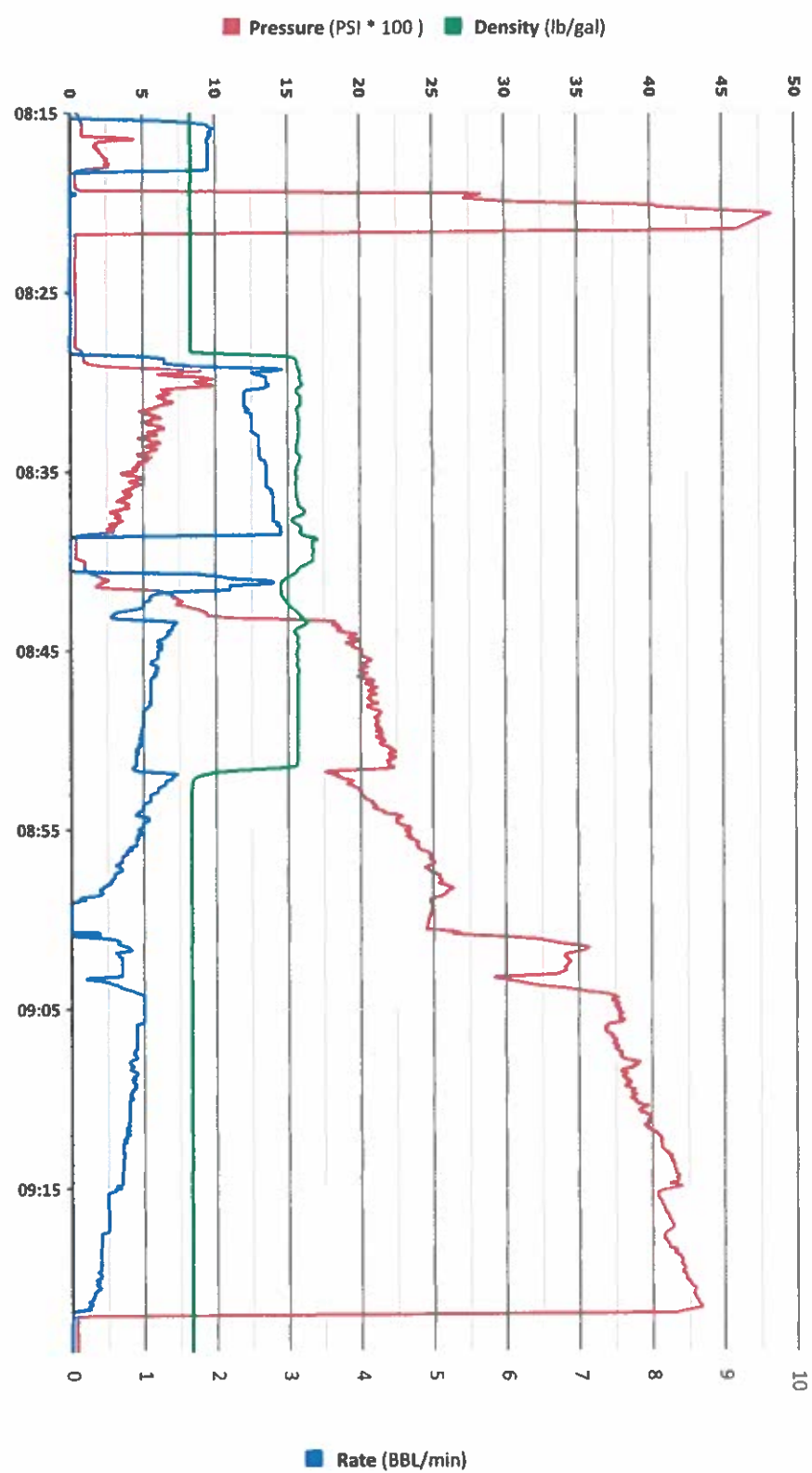
Ticket: 128318

Location: FREDERICK CO

Well Name: WELD 21-2

Job Type: SQUEEZE @ 7140

Magnum Unit #: 1014





US Treatment Report

Customer: OCCIDENTAL PETROLEUM CORP.		Job #: JOB00129322
Rep: Junior (Ismael) Salinas	Rig: Ensign 316	Job Date: Jul 13 @ 16:30
Supervisor: VITALIJS NEVERDASOVS	Well: WELD 21-2	Time Requested: Jul 13 @ 16:30
Job Type: US Remedial Retainer-Squeeze	UWI: WELD 21-2	Time Arrived: Jul 13 @ 16:30
	Surface: 05-123-24550	Time Released: Jul 13 @ 18:00

100 sk MAG G 15.8 + 0.40% MCGC-1 + 2.00% MCA-4 + 0.25% MCFL-7 + 0.30% MCFR-2 + 0.10% MCDP-P

Yield: 1.19 ft3/sk = 21.19bbls Mix Water: 4.97 gal/sk = 497gal

BHCT (F)	225	BHST (F)	225	Production Casing Size (in)	4.5
Production Casing Grade	TBD	Production Casing Weight (lb/ft)	11.6	Tubing Size (in)	2.375
Tubing Grade	TBD	Tubing Weight (lb/ft)	4.7	Max Pressure (psi)	4000
Perfs Set 1 (ft)	3710	TMD (ft)	3670	Tool Depth (ft)	3670
Tool Type	Retainer	TVD (ft)	3710		

Treatment Info: Sacks Used: 100 Sacks Not Used: 0

Preflush: 2bbls Fresh Water & 5bbls Fresh Water

Displace:

Circulation Time:

Slurry Temp:	92	Bulk Sample:	Yes
Water Temp:	65	Water Sample:	Yes
Bulk Temp:	65	Slurry Sample:	Yes
Air Temp:	96	Air Pressure	
Pump Out Lines:	Yes	Float Held:	
Humidity:	20	Precipitation:	

Slurry Returns: Plug Bumped: Cement Class: Type III

Time	Pressure psi	Annular Pressure psi	Volume Per Stage bbls	Total Stage Volume bbls	Rate bbls/min	Treatment Detail
16:15	2,950.00		2		1.5	INJECTION TEST
16:24	2,400.00		21.5		2.0	Pump Slurry - BATCH/ WEIGHT/ PUMP 100 SKS @ 15.8 PPG. YEID 1.21
16:36	2,131.00		2.0		13.2	Displace - FRESH WATER DISPLACEMENT.
16:43	0.00			0		Stop Pumping - SHUTDOWN/ STING OUT/ LEAVING 1 BBL OF SLURRY ON TOP OF RETAINER. CALCILATED TOP OF CEMENT @ 3646'.
17:00	0.00					Wash Up Truck
17:30	0.00					Rig Out



Customer: OXY

Date: 7/13/2022

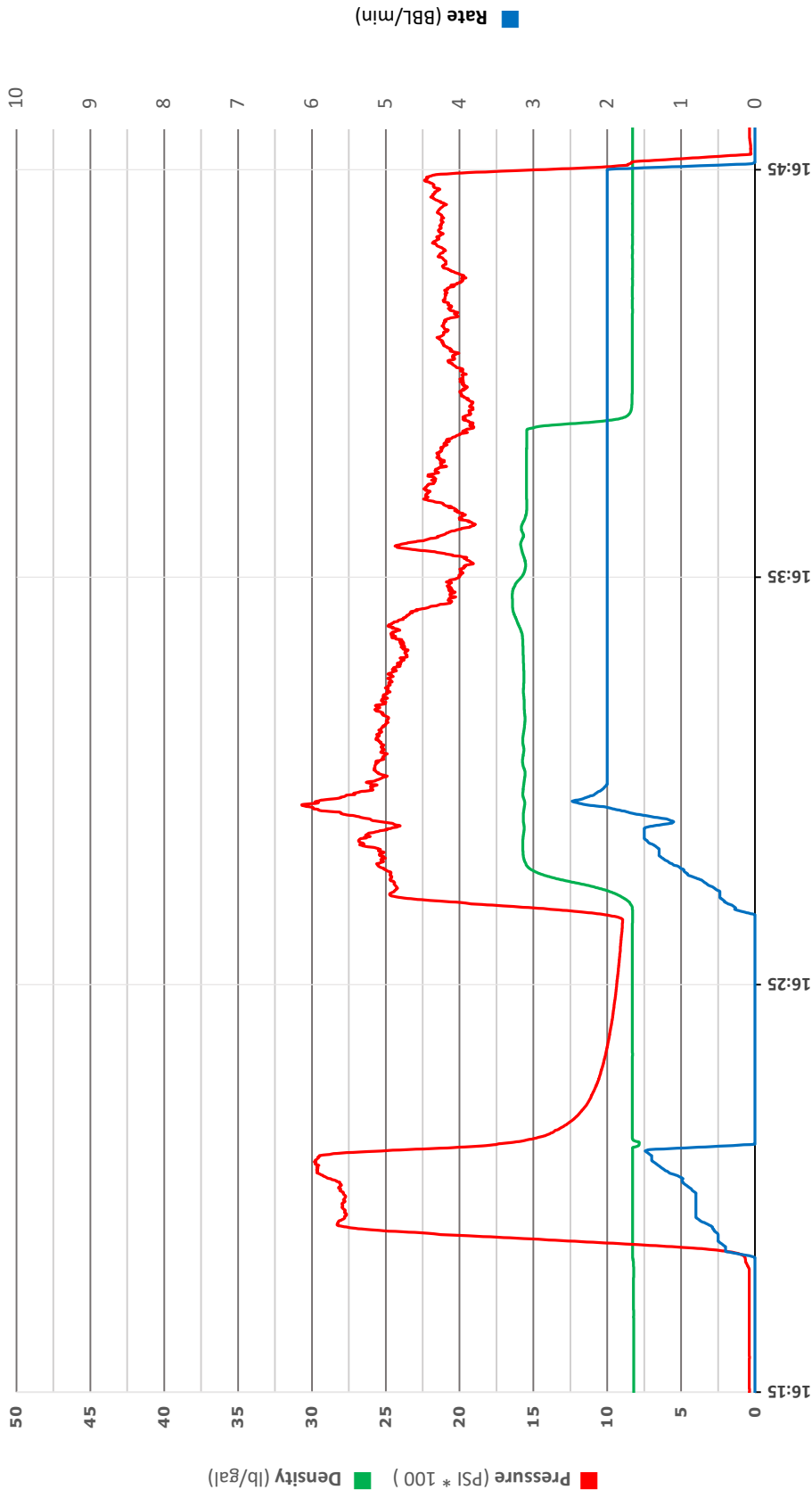
Ticket: 129322

Location: FREDERICK, CO

Well Name: WELD 21-2

Job Type: SQUEEZE 3

Magnum Unit #: 1014





Customer: OXY

Date: 7/15/2022

Ticket: 129378

Location: FIRESTONE,CO

Well Name: WELD 21-2

Job Type: SQUEEZE

Magnum Unit #: 1014





US Treatment Report

Customer: OCCIDENTAL PETROLEUM CORP.
Rep: Junior (Ismael) Salinas **Rig:** Ensign 316
Supervisor: VITALIJS **Well:** WELD 21-2
 NEVERDASOVS
Job Type: US Remedial **UWI:** WELD 21-2
 Retainer-Squeeze **Surface:** WELD 21-2

Job #: JOB00129378
Job Date: Jul 15 @ 12:00
Time Requested: Jul 15 @ 12:00

Time Arrived: Jul 15 @ 15:30
Time Released: Jul 15 @ 17:00

235 sk MAG G 15.8 + 0.40% MCGC-1 + 0.50% MCA-1 + 4.00% MCA-4 + 0.10% MCDF-P

Yield: 1.21 ft³/sk = 50.64bbbls Mix Water: 4.97 gal/sk = 1167.95gal

BHCT (F)	115	BHST (F)	115	Production Casing Size (in)	5.5
Production Casing Grade	TBD	Production Casing Weight (lb/ft)	17	Tubing Size (in)	2.375
Tubing Grade	TBD	Tubing Weight (lb/ft)	4.7	Hole Size (in)	7 7/8
Perfs Set 1 (ft)	2500	Perfs Set 2 (ft)	1709	TMD (ft)	0
Tool Depth (ft)	1800	Tool Type	Retainer	TVD (ft)	2500

Treatment Info: Sacks Used: 235 Sacks Not Used: 0

Treatment Info: Sacks Used: 235 Sacks Not Used: 0

Preflush: 2bbbls Fresh Water & 5bbbls Fresh Water

Displace:

		Circulation Time:	
	Slurry Temp:	81	Bulk Sample: Yes
	Water Temp:	63	Water Sample: Yes
	Bulk Temp:	70	Slurry Sample: Yes
	Air Temp:	98	Air Pressure
Slurry Returns:	Plug Bumped:	Pump Out Lines: Yes	Float Held:
Cement Class:	Type III	Humidity: 25	Precipitation:

Time	Pressure psi	Annular Pressure psi	Volume Per Stage bbls	Total Stage Volume bbls	Rate bbls/min	Treatment Detail
15:30	0.00					Arrive on Location - ARRIVED ON LOCATION.
15:39	0.00					TEST WATER: TEMP 60/ CHLORIDES 150/ PH 7
15:43	0.00					Safety Meeting - PRE JOB SAFETY MEETING WITH ALL PERSONEL
16:00	2,505.00		1		.5	Start Pressure Test - FILL LINES AND PRESSURE TEST
16:02	680.00		2		2.5	PUMP FRESH WATER
16:08	587.00		50.6		2.5	Pump Slurry - BATCH/ WEIGHT/ PUMP 235 SKS @ 15.8 PPG. YEID 1.21.
16:30	203.00		3.9		2.0	Displace - FRESH WATER DISPLACEMENT.
16:33	0.00			0		Stop Pumping - SHUTDOWN/ STING OUT / LEAVING 3 BBLS OF SLURRY ON TOP OF RETAINER. CALCULATED TOP OF CEMENT @ 1024'.



US Treatment Report

Customer: OCCIDENTAL PETROLEUM CORP.		Job #: JOB00129997
Rep: Junior (Ismael) Salinas	Rig: Ensign 316	Job Date: Jul 20 @ 13:00
Supervisor: VITALIJS NEVERDASOVS	Well: 129989 Occidental Petroleum Corp. Weld 21-2 Retainer Squeeze 7.20.202221-2	Time Requested: Jul 20 @ 13:00
Job Type: US Remedial Retainer-Squeeze	UWI: WELD 21-2	Time Arrived: Jul 20 @ 12:00
	Surface: WELD 21-2	Time Released: Jul 20 @ 14:00

100 sk MAG G 15.8 + 0.40% MCGC-1 + 1.00% MCA-1 + 4.00% MCA-4 + 0.10% MCDF-P

Yield: 1.2 ft³/sk = 21.37bbls Mix Water: 5.24 gal/sk = 524gal

BHCT (F)	95	BHST (F)	95	Casing Size (in)	4.5
Casing Weight (lb/ft)	11.6	Tubing Size (in)	2.375	Tubing Weight (lb/ft)	4.7
Max Pressure (psi)	2000	Perfs Set 1 (ft)	935	TMD (ft)	905

Treatment Info: Sacks Used: 100 Sacks Not Used: 0

Preflush: 2bbls Fresh Water

Displace:

Circulation Time:

Slurry Temp:	97	Bulk Sample:	Yes
Water Temp:	67	Water Sample:	Yes
Bulk Temp:	65	Slurry Sample:	Yes
Air Temp:	98	Air Pressure	
Slurry Returns:	Plug Bumped:	Pump Out Lines:	Yes Float Held:
Cement Class:	Type III	Humidity:	25 Precipitation:

Time	Pressure psi	Annular Pressure psi	Volume Per Stage bbls	Total Stage Volume bbls	Rate bbls/min	Treatment Detail
12:11	900.00		2		2	PUMP FRESH WATER
12:18	810.00		21.6		1.5	Pump Slurry - BATCH/ WEIGHT/ PUMP 100 SKS @ 15.8 PPG. YEID 1.21.
12:31	806.00		0.3		1.5	Displace - FRESH WATER DISPLACEMENT.
12:32	515.00			0		Stop Pumping - SHUTDOWN/ STING OUT. CALCULATED TOP OF CEMENT @ 712'.
12:50	0.00					Wash Up Truck
13:15	0.00					Rig Out



Customer: OXY

Date: 7/20/2022

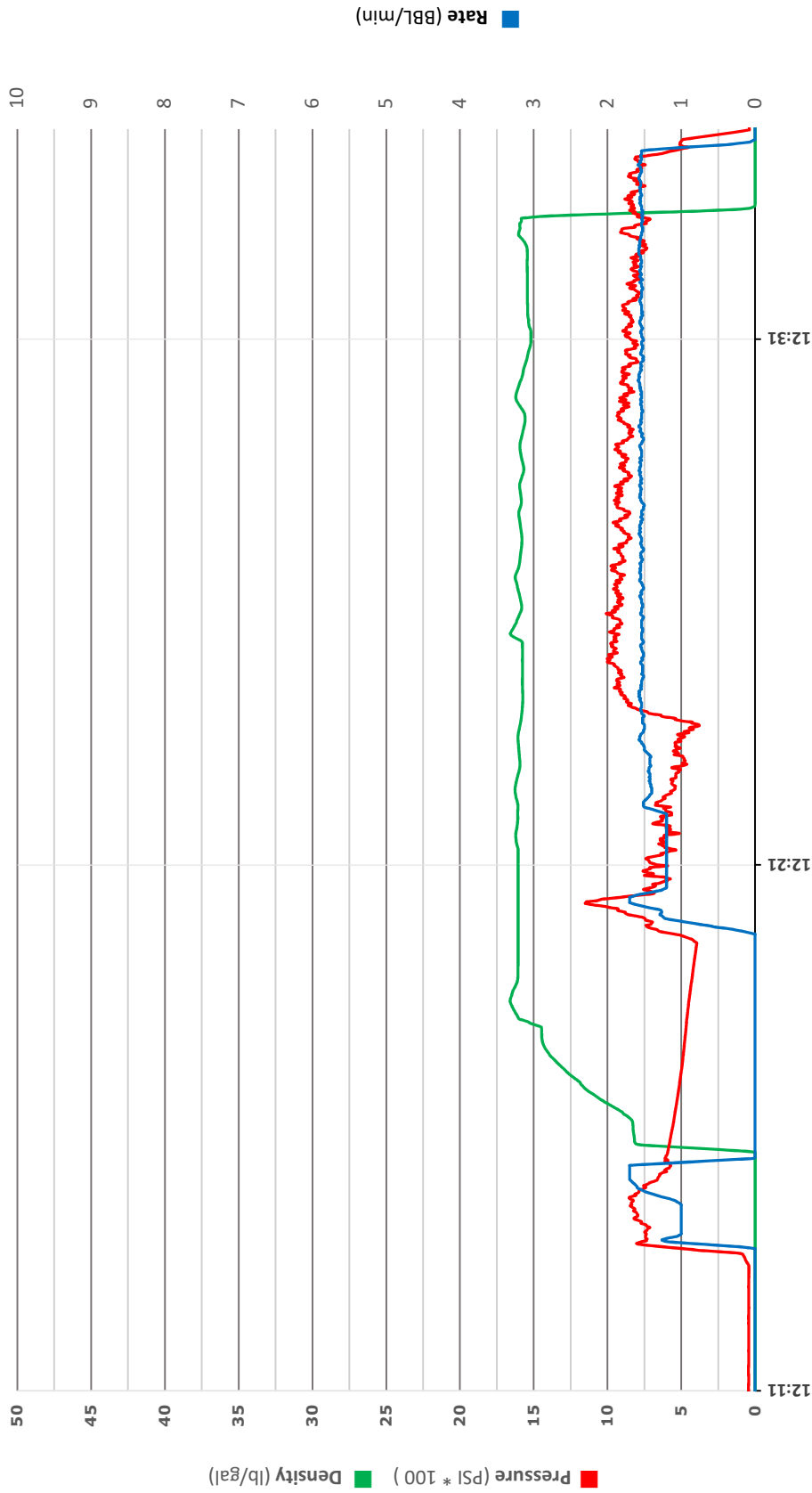
Ticket: 129989

Location: FIRESTONE,CO

Well Name: WELD 21-2

Job Type: RETAINER SQUEEZE # 2

Magnum Unit #: 1014





Customer: OXY

Date: 7/20/2022

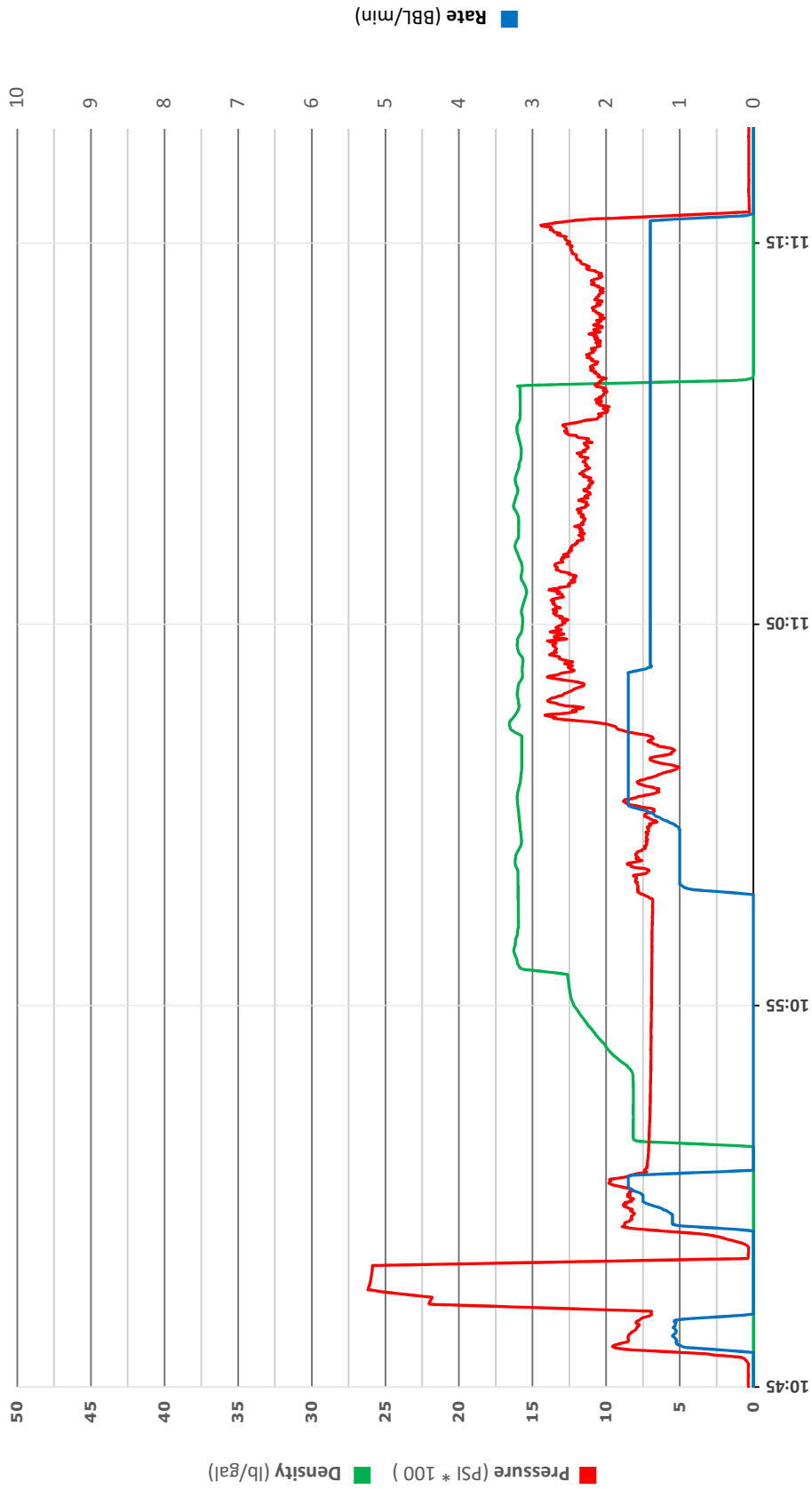
Ticket: 129989

Location: FIRESTONE,CO

Well Name: WELD 21-2

Job Type: RETAINER SQUEEZE # 1

Magnum Unit #: 1014





US Treatment Report

Customer: OCCIDENTAL PETROLEUM CORP.		Job #: JOB00129989
Rep: Junior (Ismael) Salinas	Rig: Ensign 316	Job Date: Jul 20 @ 00:00
Supervisor: VITALIJS NEVERDASOVS	Well: WELD 21-2	Time Requested: Jul 20 @ 08:30
Job Type: US Remedial Retainer-Squeeze	UWI: Weld 21-2	Time Arrived: Jul 20 @ 10:00
	Surface: Weld 21-2	Time Released: Jul 20 @ 12:00

100 sk MAG G 15.8 + 0.40% MCGC-1 + 1.00% MCA-1 + 4.00% MCA-4 + 0.10% MCDP-P

Yield: 1.2 ft³/sk = 21.37bbls Mix Water: 5.24 gal/sk = 524gal

BHCT (F)	95	BHST (F)	95	Production Casing Size (in)	4.5
Production Casing Weight (lb/ft)	11.6	Tubing Size (in)	2.375	Tubing Weight (lb/ft)	4.7
Max Pressure (psi)	2000	Perfs Set 1 (ft)	1153	TMD (ft)	1120
Tool Depth (ft)	1120	Tool Type	Retaine r	TVD (ft)	1120

Treatment Info: Sacks Used: 100 Sacks Not Used: 0

Preflush: 3bbls Fresh Water

Displace:

		Circulation Time:	0.5
	Slurry Temp:	99	Bulk Sample: Yes
	Water Temp:	67	Water Sample: Yes
	Bulk Temp:	65	Slurry Sample: Yes
	Air Temp:	98	Air Pressure
Slurry Returns:	Plug Bumped:	Pump Out Lines:	Yes Float Held:
Cement Class:	Type III	Humidity:	25 Precipitation:

Time	Pressure psi	Annular Pressure psi	Volume Per Stage bbls	Total Stage Volume bbls	Rate bbls/mi n	Treatment Detail
09:00	0.00					Arrive on Location - ARRIVED ON LOCATION.
10:10	0.00					TEST WATER: TEMP 60/ CHLORIDES 100/ PH 8
10:30	0.00					Safety Meeting - PRE JOB SAFETY MEETING WITH ALL PERSONEL
10:44	2,600.00		1		.5	Start Pressure Test - FILL LINES AND PRESSURE TEST
10:46	850.00		2	3	2.0	PUMP FRESH WATER
10:55	1,400.00		21.6		1.5	Pump Slurry - BATCH/ WEIGHT/ PUMP 100 SKS @ 15.8 PPG. YEID 1.21.
11:10	1,027.00		3.3		1.5	Displace - FRESH WATER DISPLACEMENT.
11:13	950.00			0		Stop Pumping - SHUTDOWN/ STING OUT. CALCULATED TOP OF CEMENT @ 1056'.
11:30	0.00					Wash Up Truck



Customer: Occidental

Date: 7/28/2022

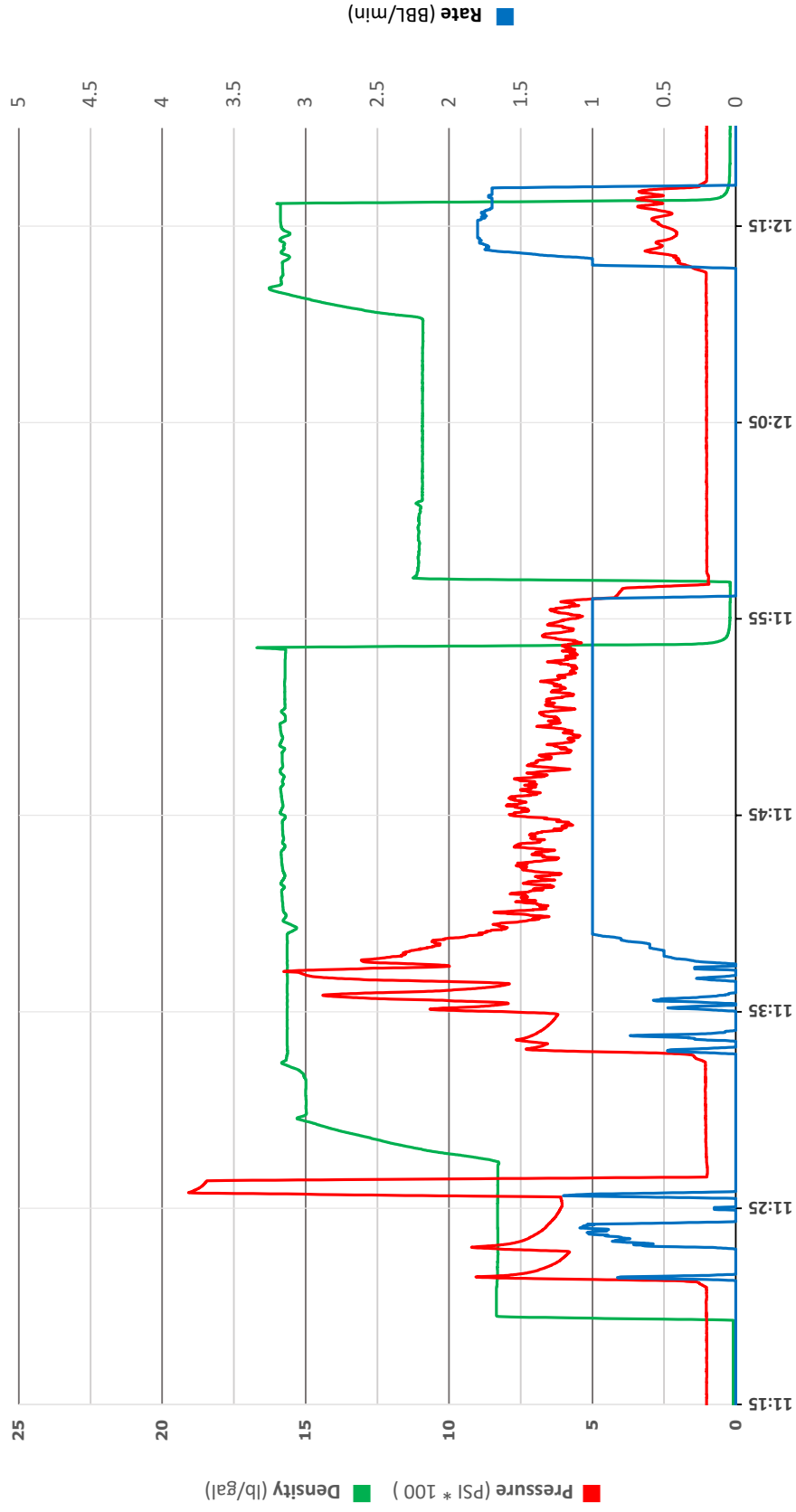
Ticket: 130429

Location: Longmont C/O

Well Name: Weld 21-2

Job Type: Retainer Squeeze/Plug

Magnum Unit #: 1015





US Treatment Report

Customer: OCCIDENTAL PETROLEUM CORP.

Rep: Junior (Ismael) Salinas

Rig: Ensign 316

Job #: JOB00130429

Job Date: Jul 28 @ 12:00

Supervisor: ROGER ACUNA

Well: WELD 21-2

Time Requested: Jul 28 @ 11:00

Job Type: US Remedial

UWI: WELD 21-2

Time Arrived: Jul 28 @ 07:59

Retainer-Squeeze

Surface: WELD 21-2

Time Released: Jul 28 @ 12:30

140 sk MAG G 15.8 + 0.40% MCGC-1 + 1.50% MCA-1 + 4.00% MCA-4 + 0.10% MCDF-P

Yield: 1.21 ft³/sk = 30.17bbls

Mix Water: 5.24 gal/sk = 733.6gal

BHCT (F)	85	BHST (F)	85	Production Casing Size (in)	8.625
Production Casing Weight (lb/ft)	24	Tubing Size (in)	2.375	Tubing Weight (lb/ft)	4.7
Hole Size (in)	4.5	Mud Density (lb/gal)	8.3	Mud Type	Water
TMD (ft)	490	Tool Depth (ft)	490	Tool Type	CICR
TVD (ft)	490				

Treatment Info: Sacks Used: 140 Sacks Not Used: 0

Preflush: 10bbls Fresh Water

Displace: 1bbls Fresh Water

Circulation Time:

Slurry Temp: 75 Bulk Sample: Yes

Water Temp: 60 Water Sample: Yes

Bulk Temp: 65 Slurry Sample: Yes

Air Temp: 75 Air Pressure

Slurry Returns: Plug Bumped: Pump Out Lines: No Float Held:

Cement Class: Type III Humidity: 80 Precipitation: 0

Time	Pressure psi	Annular Pressure psi	Volume Per Stage bbls	Total Stage Volume bbls	Rate bbls/min	Treatment Detail
10:00	0.00					Arrive on Location - ARRIVED TO LOCATION/ TAILGATE MEETING, WATER TEST PH-6/ CHLORIDES 0
11:00	0.00					Safety Meeting - SAFETY MEETING WITH RIG CREW AND MAGNUM
11:25	1,200.00				.8	Start Pressure Test - PUMP 1BBLs WATER TEST TO 1200PSI
11:30	650.00		18		1	Pump Slurry - PUMP 85SKS/18BBLs @ 15.8PPG 1.21YLD 5.24GPS TOP OF PLUG 490FT
11:54	600.00		1		1	Displace - DISPLACE 1BBL
11:57	0.00					POOH TO REMOVE STINGER
12:12	300.00		8		2	Pump Slurry - PUMP 37SKS/8BBLs @ 15.8PPG 1.21YLD 5.24GPS
12:15	10.00		1		1	Pump Slurry - PUMP 4.6SKS/1BBL @ 15.8 1.21YLD 5.24GPS TO TOP OFF WELL TOP OF CEMENT SURFACE
13:00	0.00					Leave Location - DEPART LOCATION



Customer: Occidental

Date: 7/28/2022

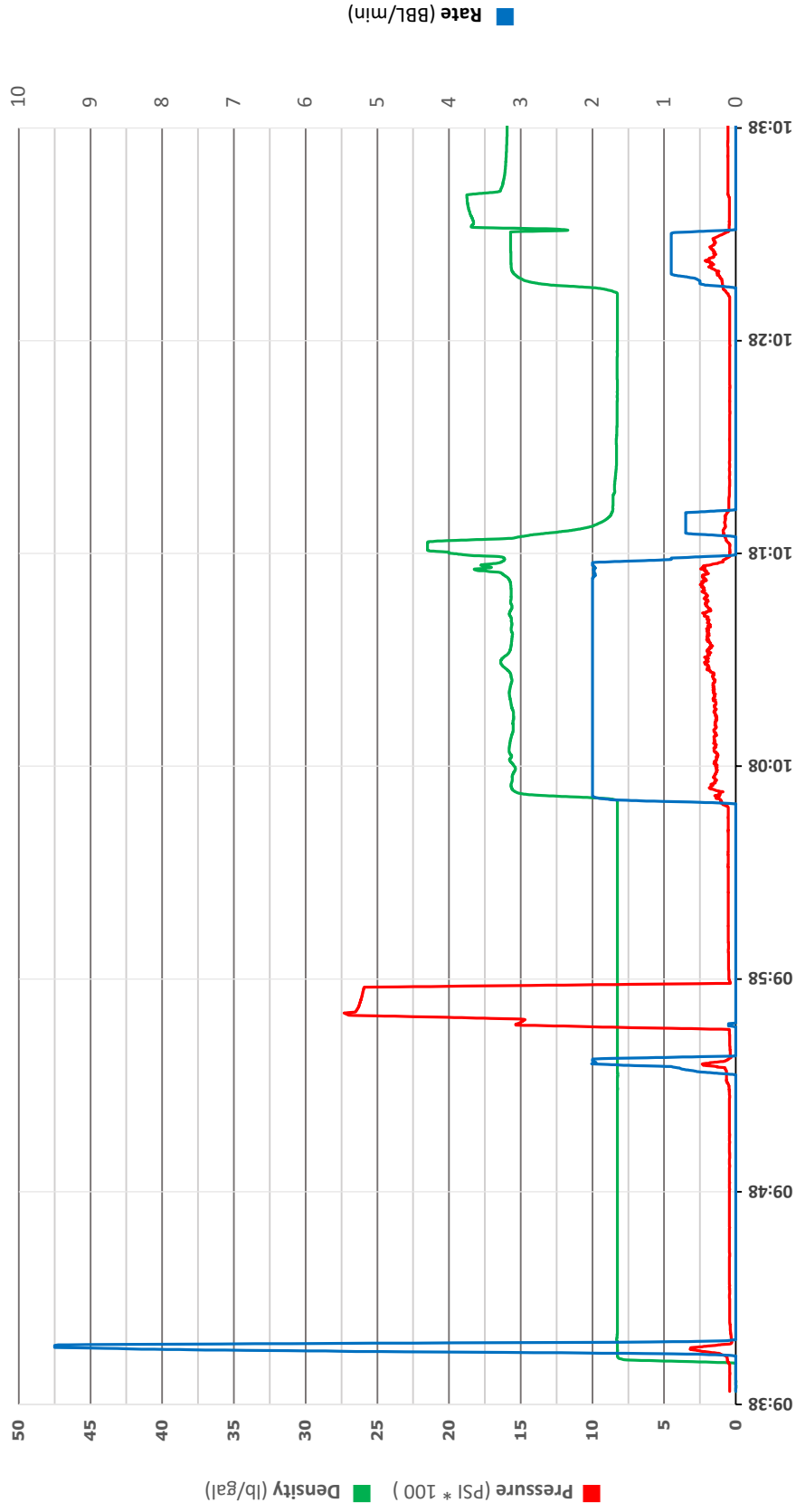
Ticket: 130429

Location: Longmont CO

Well Name: Weld 21-2

Job Type: Squeeze

Magnum Unit #: 1015





Treatment Report

Customer: Occidental Petroleum Corp.

Job #: JOB00130429

Rep: Junior (Ismael)
Salinas

Rig: Ensign 316

Job Date: Jul 28 @ 10:07

Supervisor: Roger Acuna

Well: WELD 21-2

Time Requested:

Job Type: US Remedial

UWI: WELD 21-2

Time Arrived: Jul 28 @ 10:07

Retainer-
Squeeze

Surface: WELD 21-2

Time Released: Jul 28 @ 13:07

1 Size (mm, in)	8.625	1 Weight (kg/m, lb/ft)	24	2 Size (mm, in)	2.375
2 Weight (kg/m, lb/ft)	4.7	BHCT (°C, °F)	85	BHST (°C, °F)	85
Hole Size (mm, in)	4.5	Mud Density (kg/m3, lb/gal)	8.3	Mud Type	Water
TMD (m, ft)	490	Tool Depth (m, ft)	490	Tool Type	CICR
TVD (m, ft)	490				

Treatment Info:	Tonnes Used:	Tonnes Not Used:	0.00
Preflush:	10m3 Fresh Water		Circulation Time:
		Slurry Temp:	75 Bulk Sample: Yes
Displace:	1m3 Fresh Water	Water Temp:	60 Water Sample: Yes
		Bulk Temp:	65 Slurry Sample: Yes
Slurry Returns:	Plug Bumped:	Pump Out Lines:	Float Held:

Time	Pressure MPa	Annular Pressure MPa	Volume Per Stage m3	Total Stage Volume m3	Rate m3/min	Treatment Detail
10:00	0.00	0.00		0.00		Arrive on Location - ARRIVED TO LOCATION/ TAILGATE MEETING, WATER TEST PH-6/ CHLORIDES 0
11:00	0.00	0.00		0.00		Safety Meeting - SAFETY MEETING WITH RIG CREW AND MAGNUM
11:25	2500.00	0.00		0.00	.8	Start Pressure Test - PUMP 1BBLS WATER TEST TO 2500PSI
11:30	300.00	0.00	18	0.00	1	Pump Slurry - PUMP 85SKS/18BBLS @ 15.8PPG 1.21YLD 5.24GPS TOP OF PLUG 490FT
11:54	300.00	0.00	1	0.00	1	Displace - DISPLACE 1BBL
11:57	0.00	0.00		0.00		POOH TO REMOVE STINGER
12:12	300.00	0.00	8	0.00	2	Pump Slurry - PUMP 37SKS/8BBLS @ 15.8PPG 1.21YLD 5.24GPS,
12:15	10.00	0.00	1	0.00	1	Pump Slurry - PUMP 4.6SKS/1BBL @ 15.8 1.21YLD 5.24GPS TO TOP OFF WELL TOP OF CEMENT SURFACE
13:00	0.00	0.00		0.00		Leave Location - DEPART LOCATION