



Radial Cement Bond
Gamma Ray
Casing Collar Log

Company Kerr-McGee Oil & Gas Onshore, L.P.
Well Weld 21-2
Field Wattenberg
County Weld
State Colorado

Company Kerr-McGee Oil & Gas Onshore, L.P.
Well Weld 21-2
Field Wattenberg
County Weld
State Colorado

Location: API #: 05-123-24550

SEC TWP RGE

Permanent Datum
Log Measured From
Drilling Measured From

Ground Level
Ground Level
Kelly Bushing

Other Services
SQZ
Elevation
K.B. ---
D.F. ---
G.L. ---

Date 27-APR-2021

Run Number Two

Depth Driller --- FT

Depth Logger 1132 FT

Bottom Logged Interval 1127 FT

Top Log Interval Surface

Open Hole Size 8.625"

Type Fluid Water

Density / Viscosity 8.34 lb/gal

Max. Recorded Temp. 73°F

Estimated Cement Top See Log

Time Well Ready ROA

Time Logger on Bottom 10:00

Equipment Number HD-0325

Location Plateville, CO

Recorded By W.Wacker
Witnessed By Socorro Olivas

Run Number Bit From To Size Weight From To

Casing Record Size (in) Wgt (lbs/ft) Grade Top Bottom

Surface Casing Intermediate #1 Intermediate #2

Inner

FT

FT

<<< Fold Here >>>

All interpretations are opinions based on inferences from electrical or other measurements and we cannot and do not guarantee the accuracy or correctness of any interpretation, and we shall not, except in the case of gross or willful negligence on our part, be liable or responsible for any loss, costs, damages, or expenses incurred or sustained by anyone resulting from any interpretation made by any of our officers, agents or employees. These interpretations are also subject to our general terms and conditions set out in our current Price Schedule.

Comments

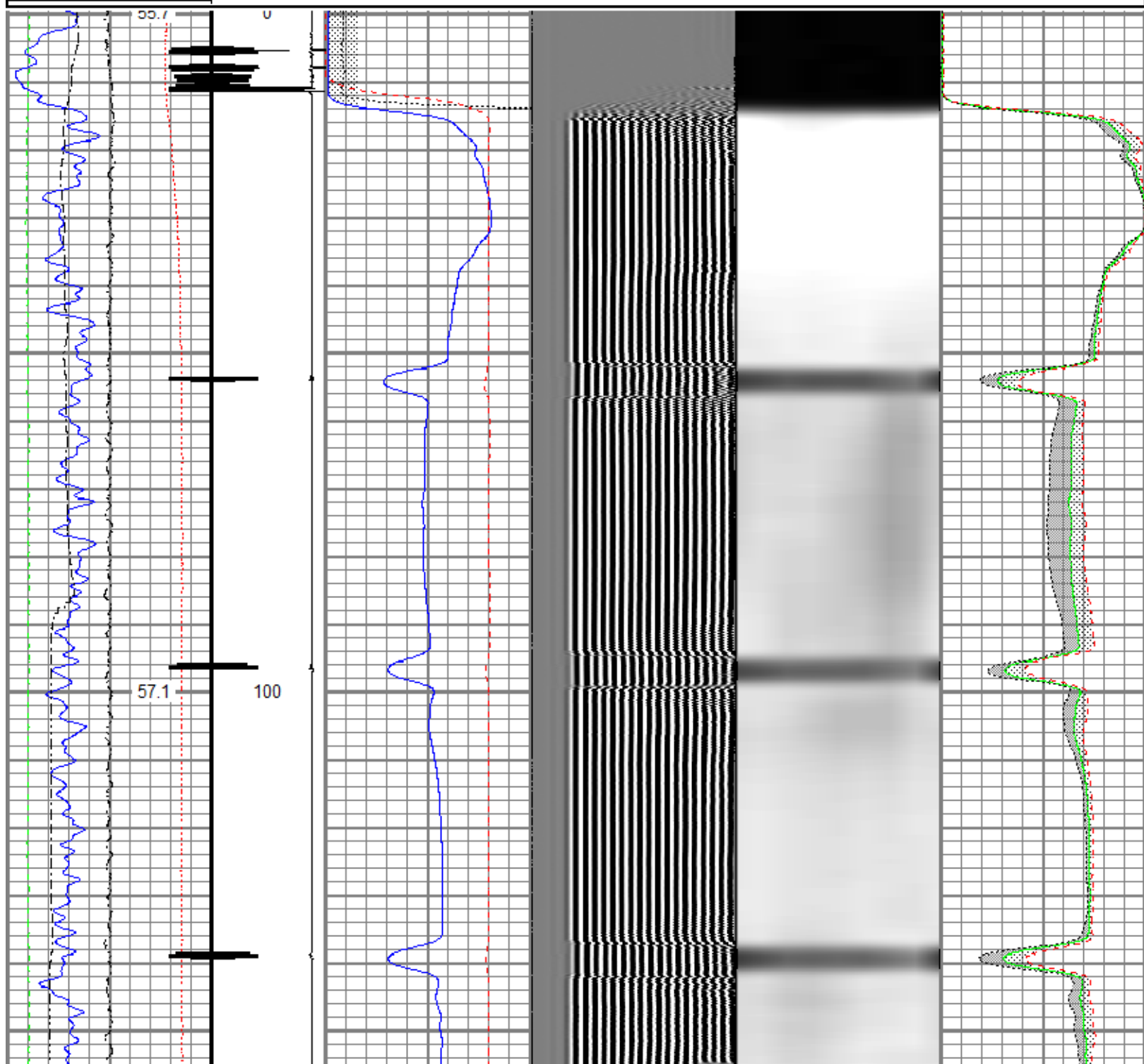
Log ran as per customer request
Depth referenced to Kelly Bushing at 12 FT
Adjusted 0 FT to correlate with Kelly Bushing
Shop calibrations performed on the RBL Tool on 27-April-2021
Free Pipe Calibrated at 30 FT.
Log ran with 0 PSI surface induced pressure
Logging tools were clean and free of debris upon completion of operations
Thank you for choosing Reliance Oilfield Services, LLC!!

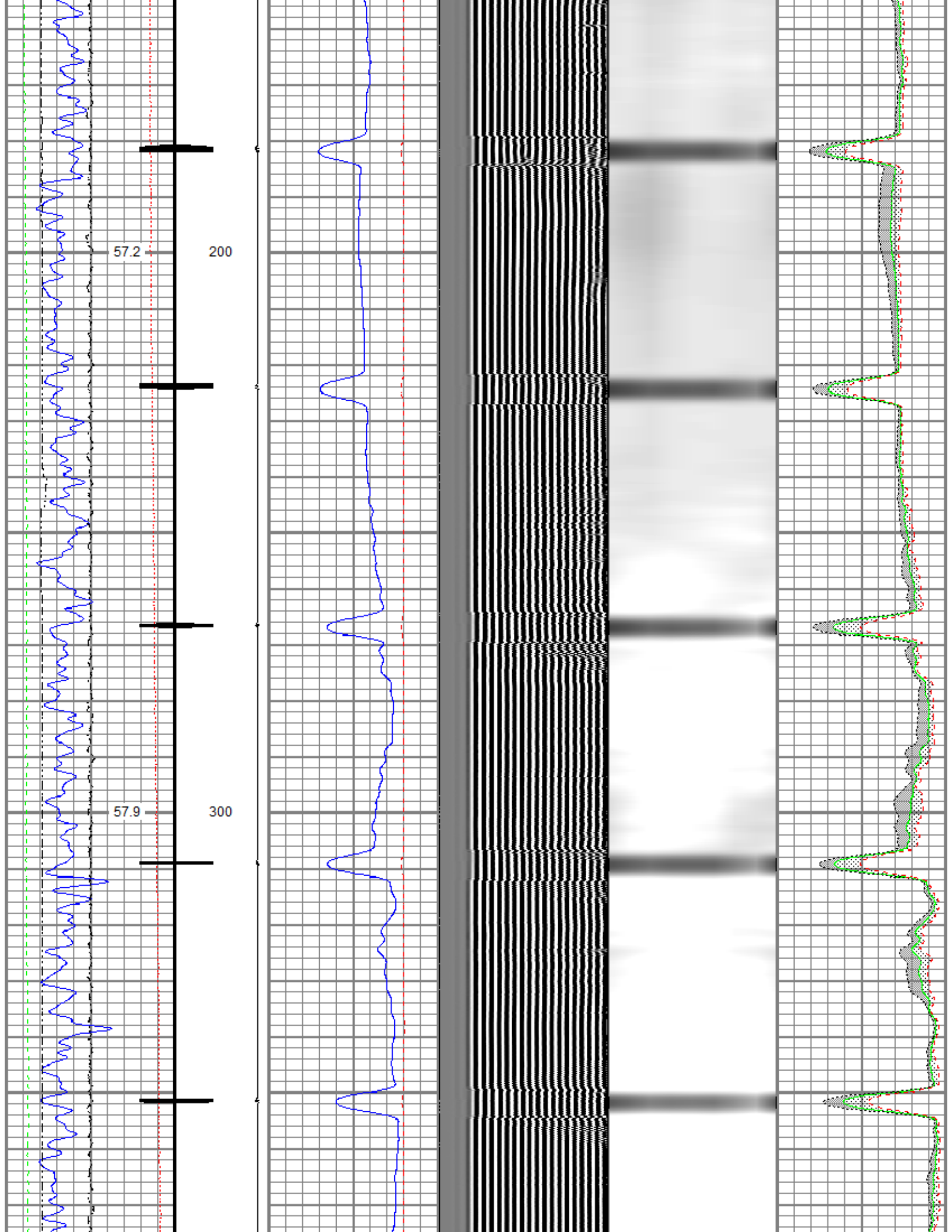
Main Pass

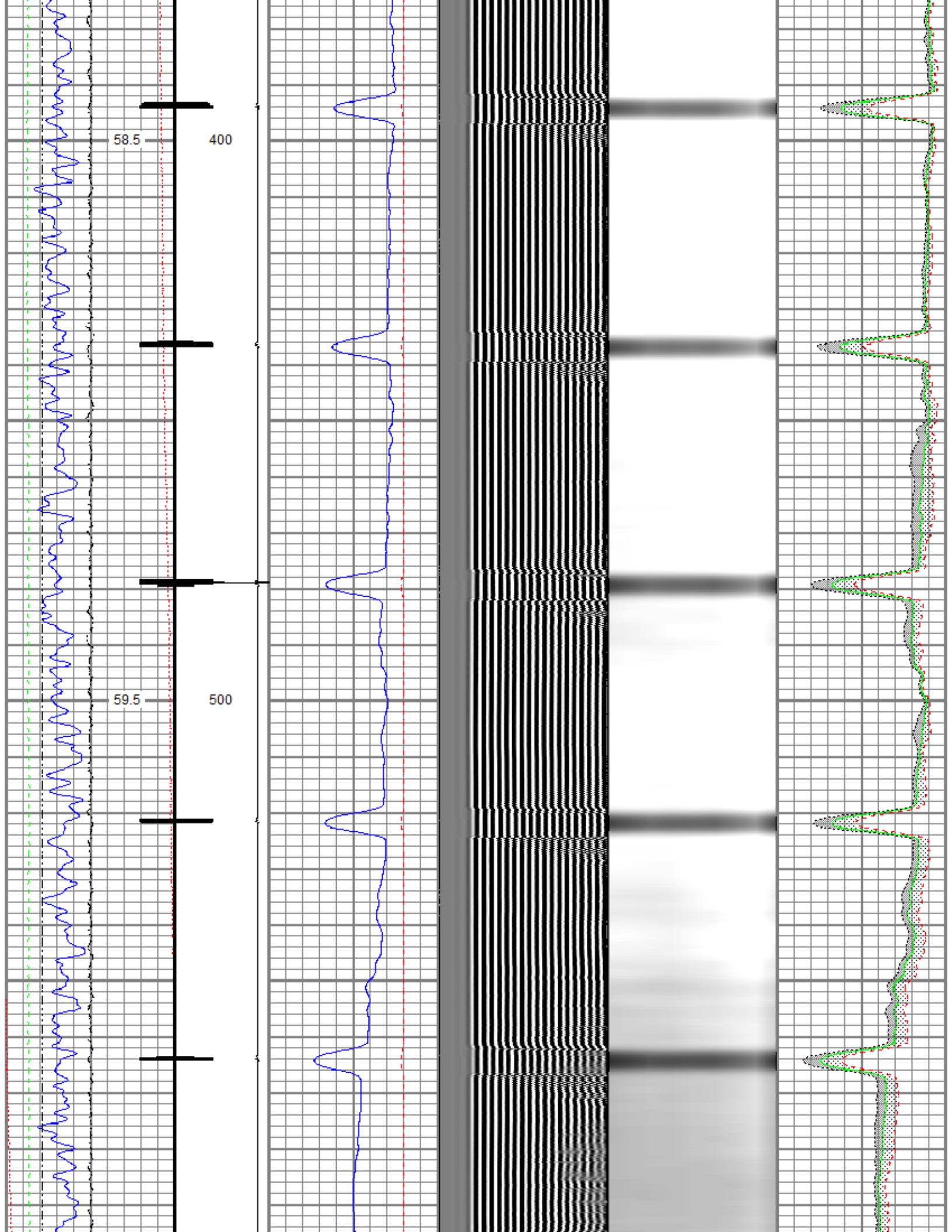


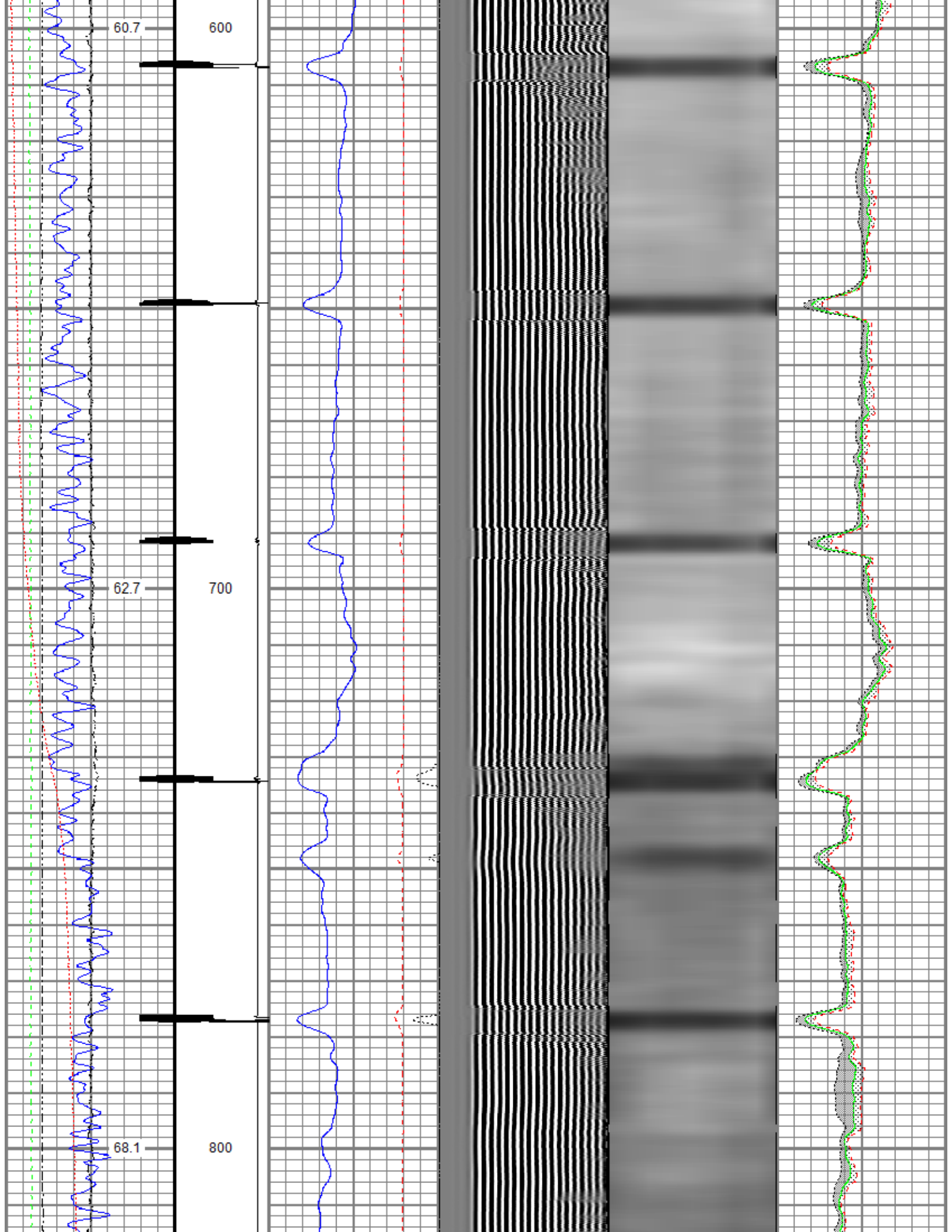
Database File oxy_weld_21-2_rcbl_27-apr-2021.db
 Dataset Pathname pass10
 Presentation Format ros_radri_oxy_vert_gobo_45
 Dataset Creation Tue Apr 27 10:21:50 2021
 Charted by Depth in Feet scaled 1:240

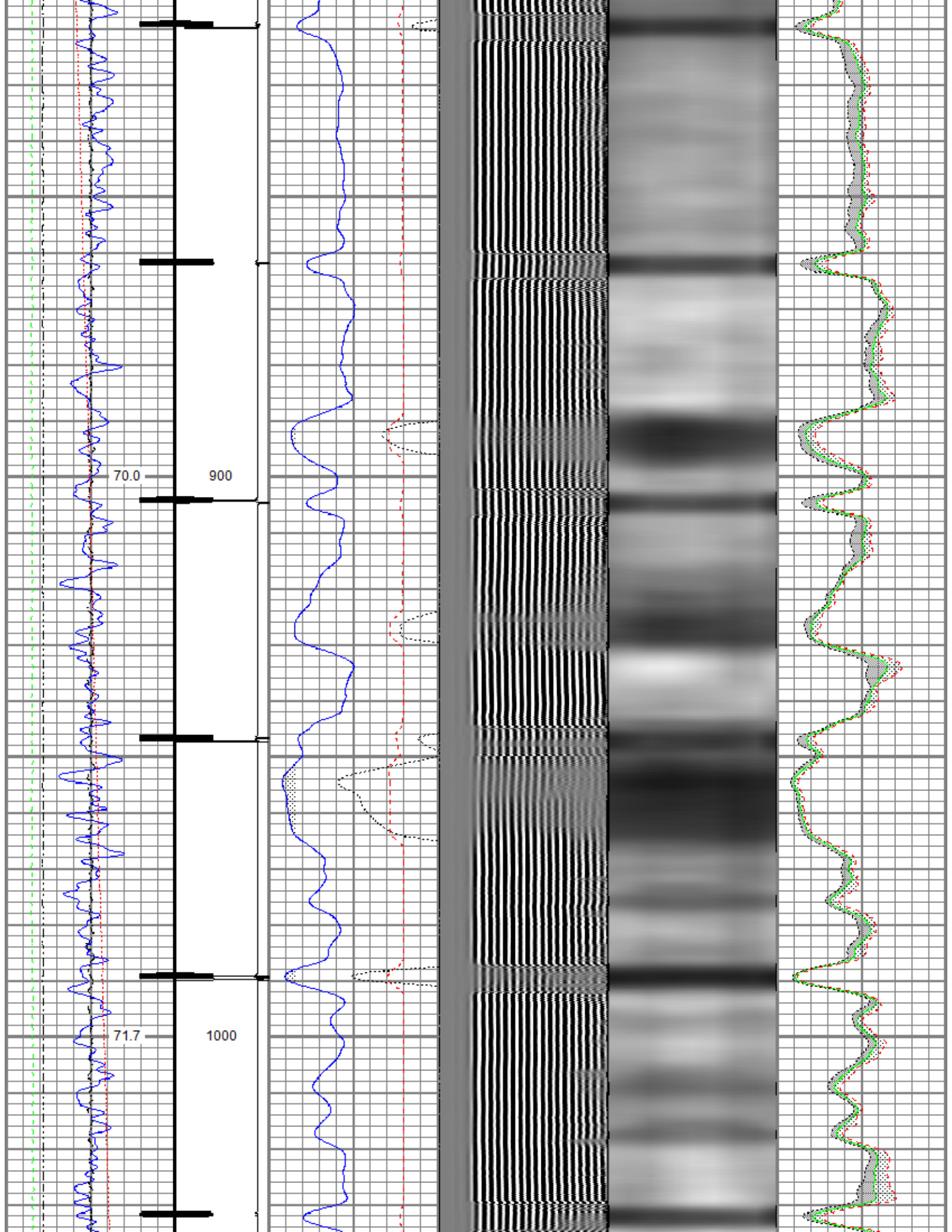
Gamma Ray	9 CCL\$2 -1 0	3' Amplitude (mV) 100	5' Variable Density Log	Sector Map	0 Average Amplitude 100
0 (GAPI) 120		3' Amplitude x 5	200 (usec) 1200		Minimum Amplitude
0 Temperature (degF) 20		0 (mV) 20			0 100
Line Speed		3' Travel Time			Maximum Amplitude
-150 (ft/min) 150		650 (usec) 150			0 100
0 Line Tension (lb) 2000		GOBO			
Differential Temperature					
-2 (degF) 2					
Casing Collar Locator					

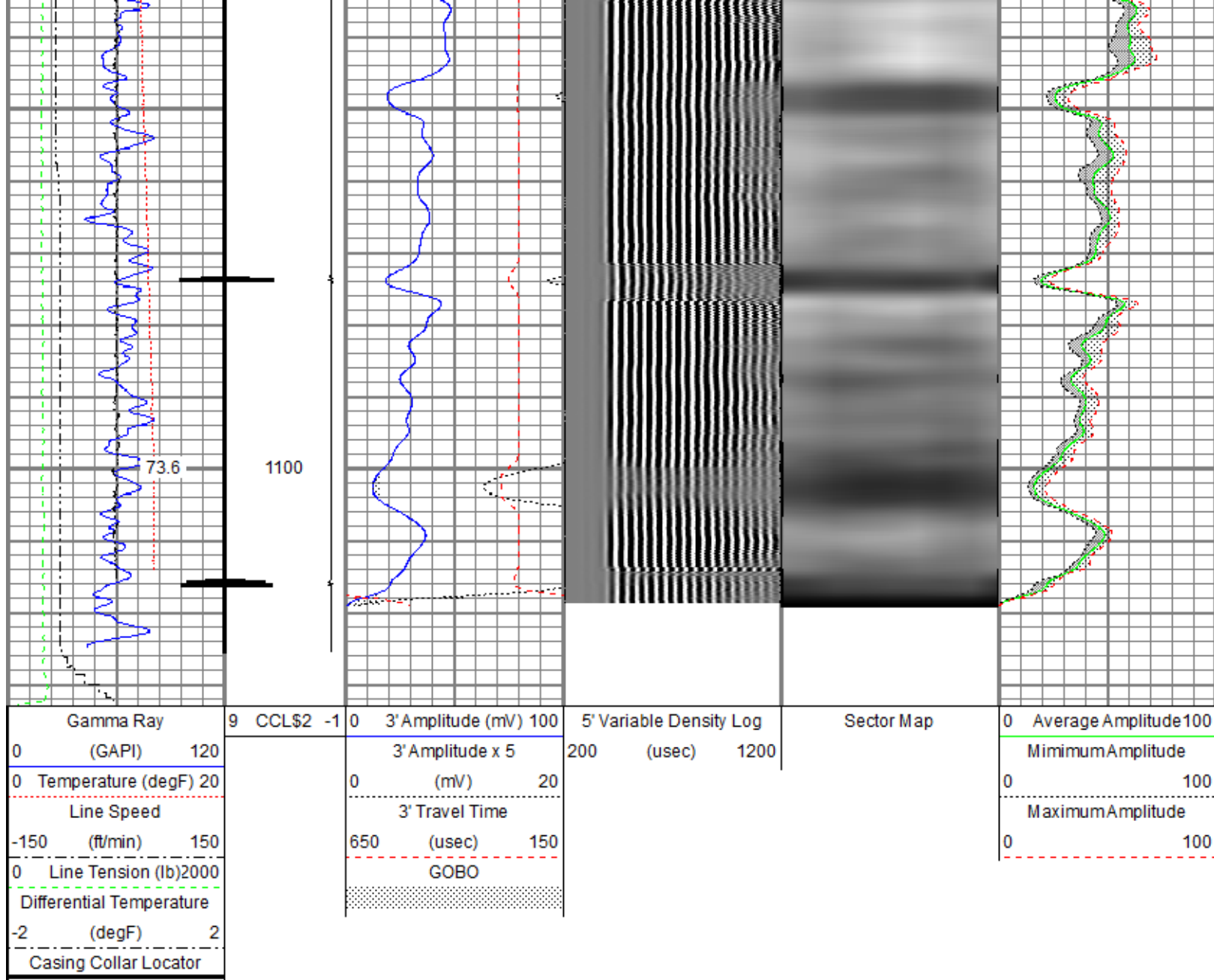








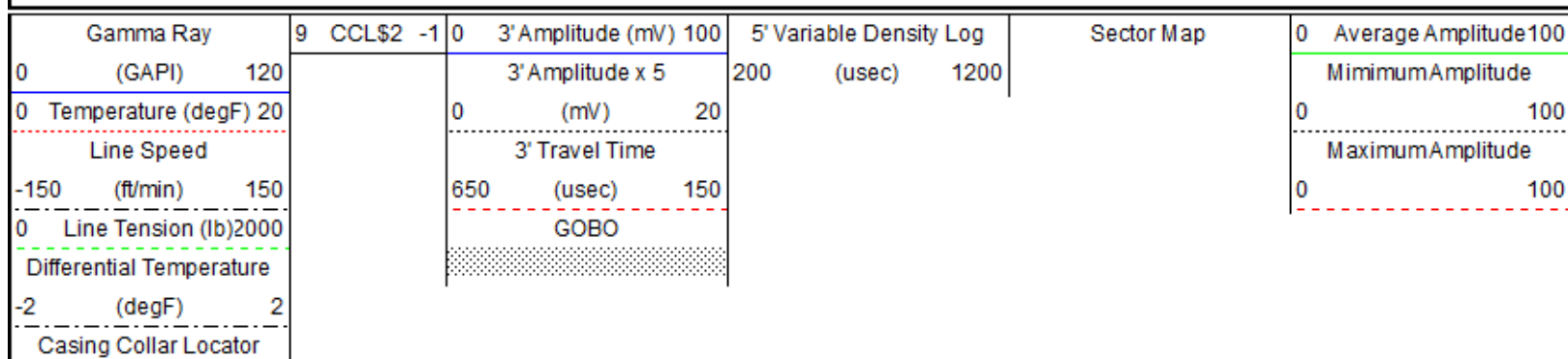


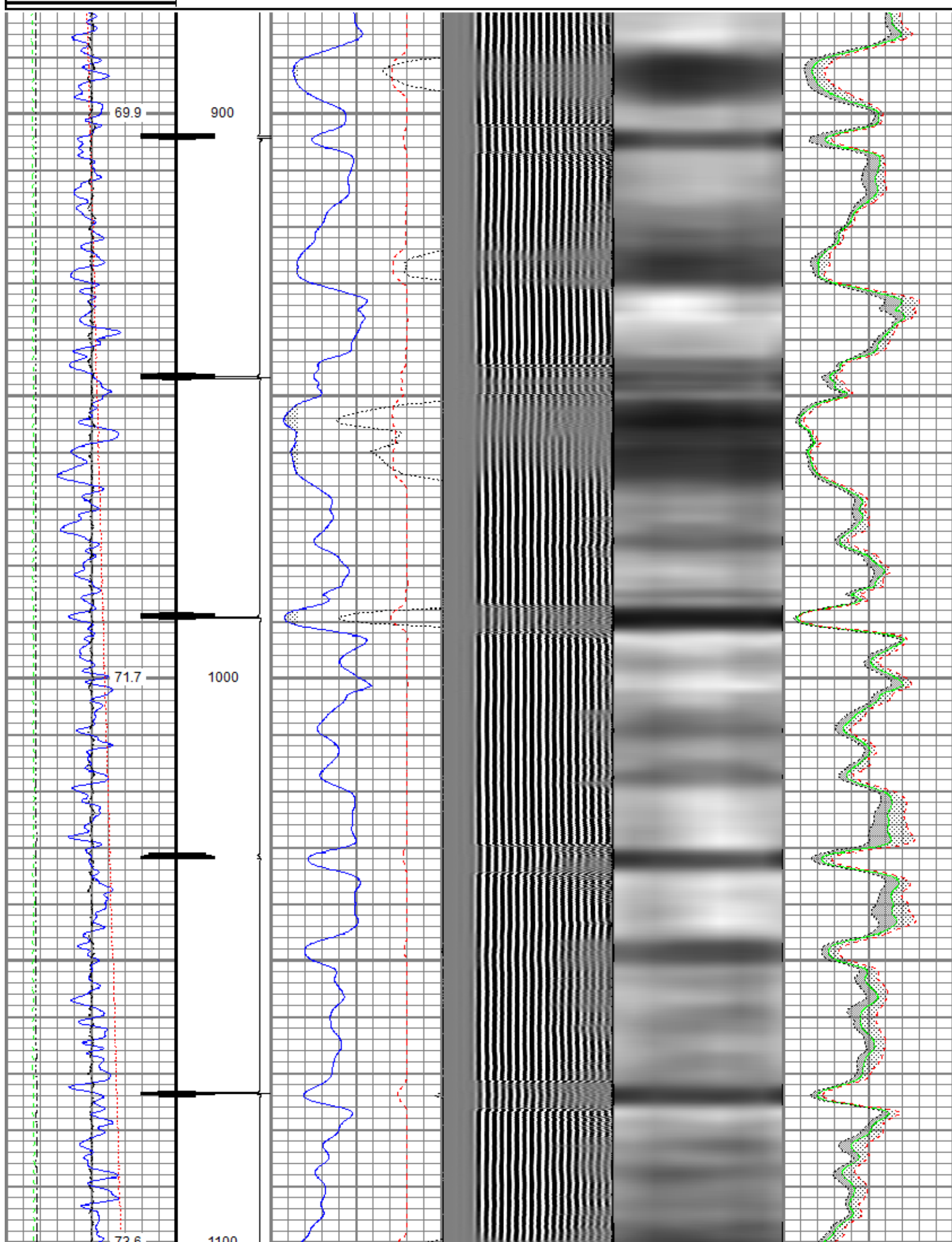


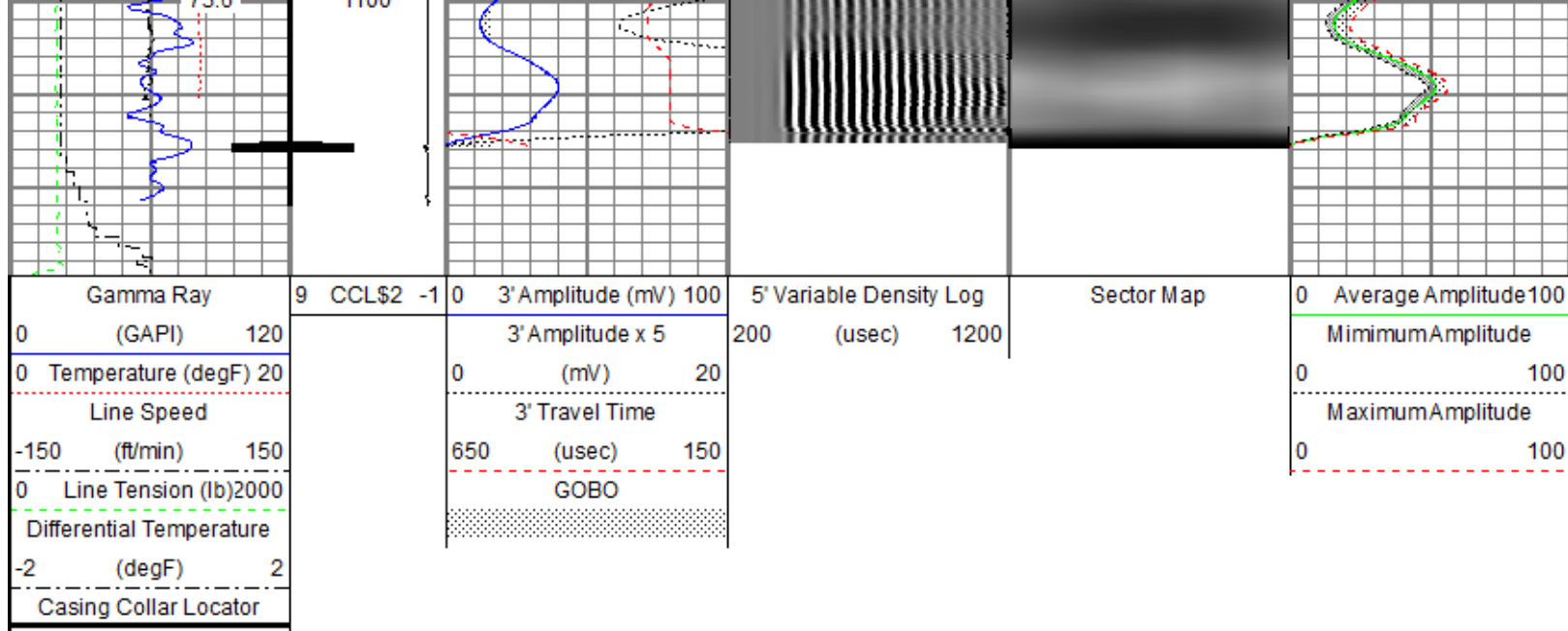
Repeat Pass

Recorded With No Surface Induced Pressure

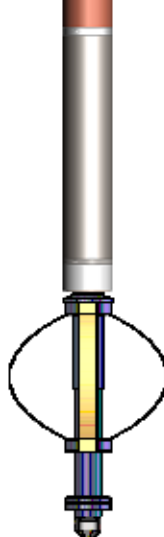
Database File oxy_weld_21-2_rcbl_27-apr-2021.db
 Dataset Pathname pass6
 Presentation Format ros_radli_oxy_vert_gobo_45
 Dataset Creation Tue Apr 27 10:01:37 2021
 Charted by Depth in Feet scaled 1:240







Sensor	Offset (ft)	Schematic	Description	Length (ft)	O.D. (in)	Weight (lb)
TEMP	17.29		Titan CHD-14375 GO	1.03	1.44	3.60
			Titan 1-7/16" Assembled Electric Cable Head with 1" Fishing Neck			
			Probe CENT-2750	2.88	2.75	20.00
			Probe 2-3/4" Electric Inline Bowspring Centralizer			
WVFS8	15.06		Probe Radii-2750 RBT (FW1305-096)	9.39	2.75	105.00
WVFS7	15.06		Probe 2-3/4" Radial Cement Bond Tool with Integral Temperature Sub			
WVFS6	15.06					
WVFS5	15.06					
WVFS4	15.06					
WVFS3	15.06					
WVFS2	15.06					
WVFS1	15.06					
WVFCAL	15.06					
WVF3FT	15.06					
WVF5FT	14.06					
HEADVOLT	10.81					
CCL\$2	7.05		Probe CENT-2750	2.88	2.75	20.00
			Probe 2-3/4" Electric Inline Bowspring Centralizer			

CCL\$1	7.05					
GR	5.71		Probe GR-CCL-2750 6PB (FW1810-044) Probe 2-3/4" rev.1 Digital Scintillation Gamma Ray/CCL Combined with 6 Pin Bottom for CNT	4.80	2.75	55.00
			Probe CENT-2750 Probe 2-3/4" Electric Inline Bowspring Centralizer	2.88	2.75	20.00
LOCTIM UTCTIM	0.00 0.00		GO BN-14375 GO 1-7/16" Bull Nose with Go Box Top	0.25	1.44	1.00
Dataset: oxy_weld_21-2_rcbl_27-apr-2021.db: field/well/run1/repeat Total length: 24.11 ft Total weight: 224.60 lb O.D.: 2.75 in						

Calibration Report						
Database File	oxy_weld_21-2_rcbl_27-apr-2021.db					
Dataset Pathname	pass11					
Dataset Creation	Tue Apr 27 10:24:09 2021					
Gamma Ray Calibration Report						
Serial Number:	FW1810-044					
Tool Model:	2750 6PB					
Performed:	Mon Oct 19 14:19:51 2020					
Calibrator Value:	637.0	GAPI				
Background Reading:	105.3	cps				
Calibrator Reading:	1221.0	cps				
Sensitivity:	0.5709	GAPI/cps				
Segmented Cement Bond Log Calibration Report						
Serial Number:	FW1305-096					
Tool Model:	2750 RBT					
Calibration Casing Diameter:	4.500	in				
Calibration Depth:	387.412	ft				
Master Calibration, performed (Derived):						
	Raw (v)		Calibrated (mv)		Results	
	Zero	Cal	Zero	Cal	Gain	Offset
3'	0.000	0.574	0.800	81.196	140.265	0.740
CAL	0.675	0.675				
5'	0.000	0.528	0.800	81.196	152.471	0.753
SUM						
S1	0.000	0.437	0.000	100.000	228.990	-0.048
S2	0.000	0.513	0.000	100.000	195.003	-0.056
S3	0.000	0.592	0.000	100.000	169.054	-0.066
S4	0.000	0.563	0.000	100.000	177.773	-0.066
S5	0.000	0.550	0.000	100.000	182.030	-0.071
S6	0.000	0.530	0.000	100.000	188.968	-0.071
S7	0.000	0.548	0.000	100.000	182.544	-0.073
S8	0.000	0.550	0.000	100.000	182.057	-0.076

	Raw (v)	Calibrated (v)	Results
	Zero	Zero	Offset
3'	0.000	0.000	0.000
5'	0.000	0.000	0.000
SUM			
S1	0.000	0.000	0.000
S2	0.000	0.000	0.000
S3	0.000	0.000	0.000
S4	0.000	0.000	0.000
S5	0.000	0.000	0.000
S6	0.000	0.000	0.000
S7	0.000	0.000	0.000
S8	0.000	0.000	0.000

Temperature Calibration Report

Serial Number: FW1305-096
Tool Model: 2750 RBT
Performed: Mon Oct 19 14:19:51 2020

	Reference	Reading
Low Reference:	100.00 degF	109.43 degF
High Reference:	350.00 degF	405.87 degF

Gain: 0.84
Offset: 7.72
Delta Spacing: 1



Company Kerr-McGee Oil & Gas Onshore, L.P.
Well Weld 21-2
Field Wattenberg
County Weld
State Colorado