



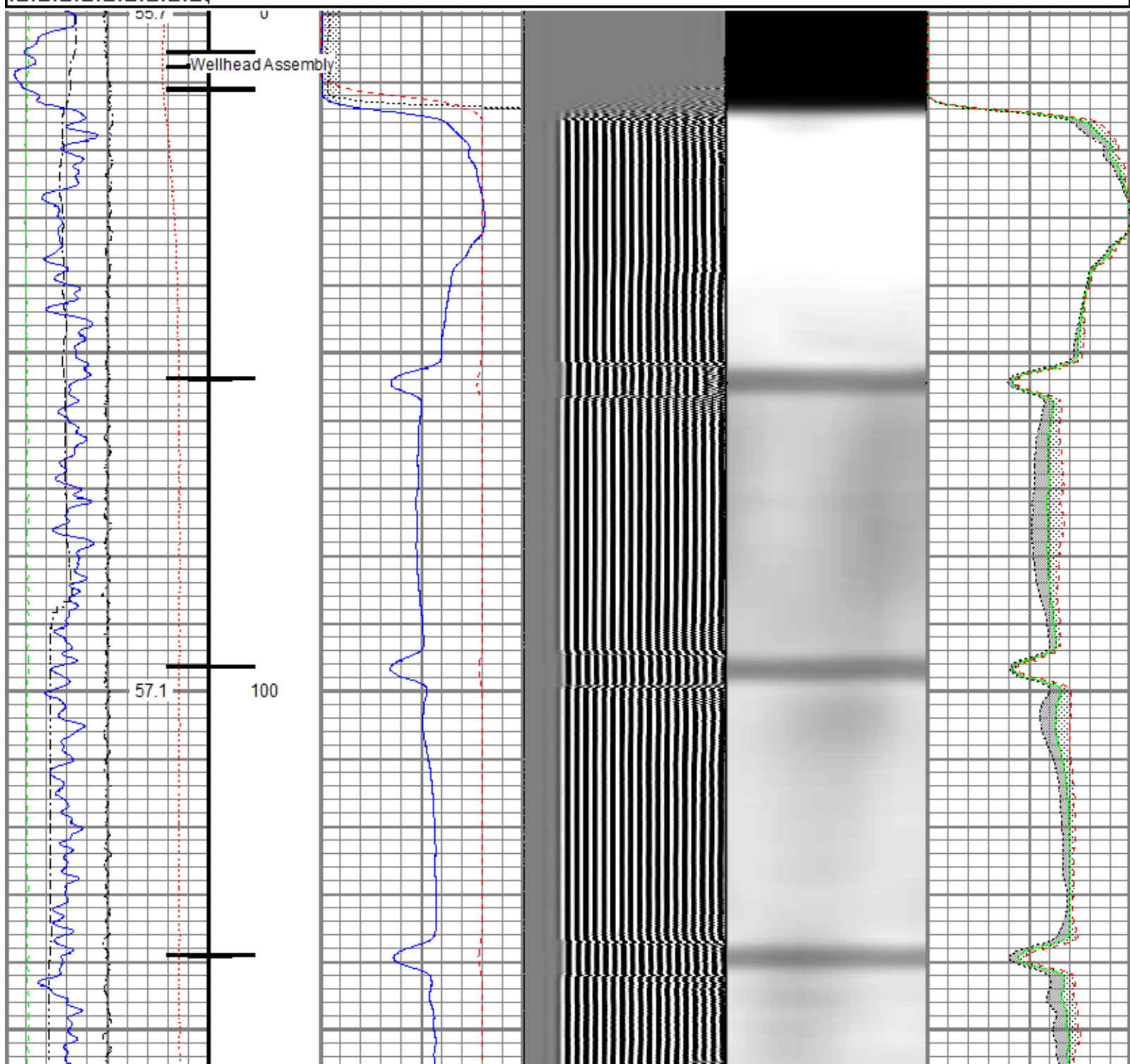
<<< Fold Here >>>
All interpretations are opinions based on inferences from electrical or other measurements and we cannot and do not guarantee the accuracy or correctness of any interpretation, and we shall not, except in the case of gross or willful negligence on our part, be liable or responsible for any loss, costs, damages, or expenses incurred or sustained by anyone resulting from any interpretation made by any of our officers, agents or employees. These interpretations are also subject to our general terms and conditions set out in our current Price Schedule.
Comments
<p>Log ran as per customer request Depth referenced to Kelly Bushing at 12 FT Adjusted 0 FT to correlate with Kelly Bushing Log ran with 0 PSI Surface Induced Pressure Logging tools were clean and free of debris upon completion of operations</p> <p>Thank you for choosing Reliance Oilfield Services, LLC!!</p>

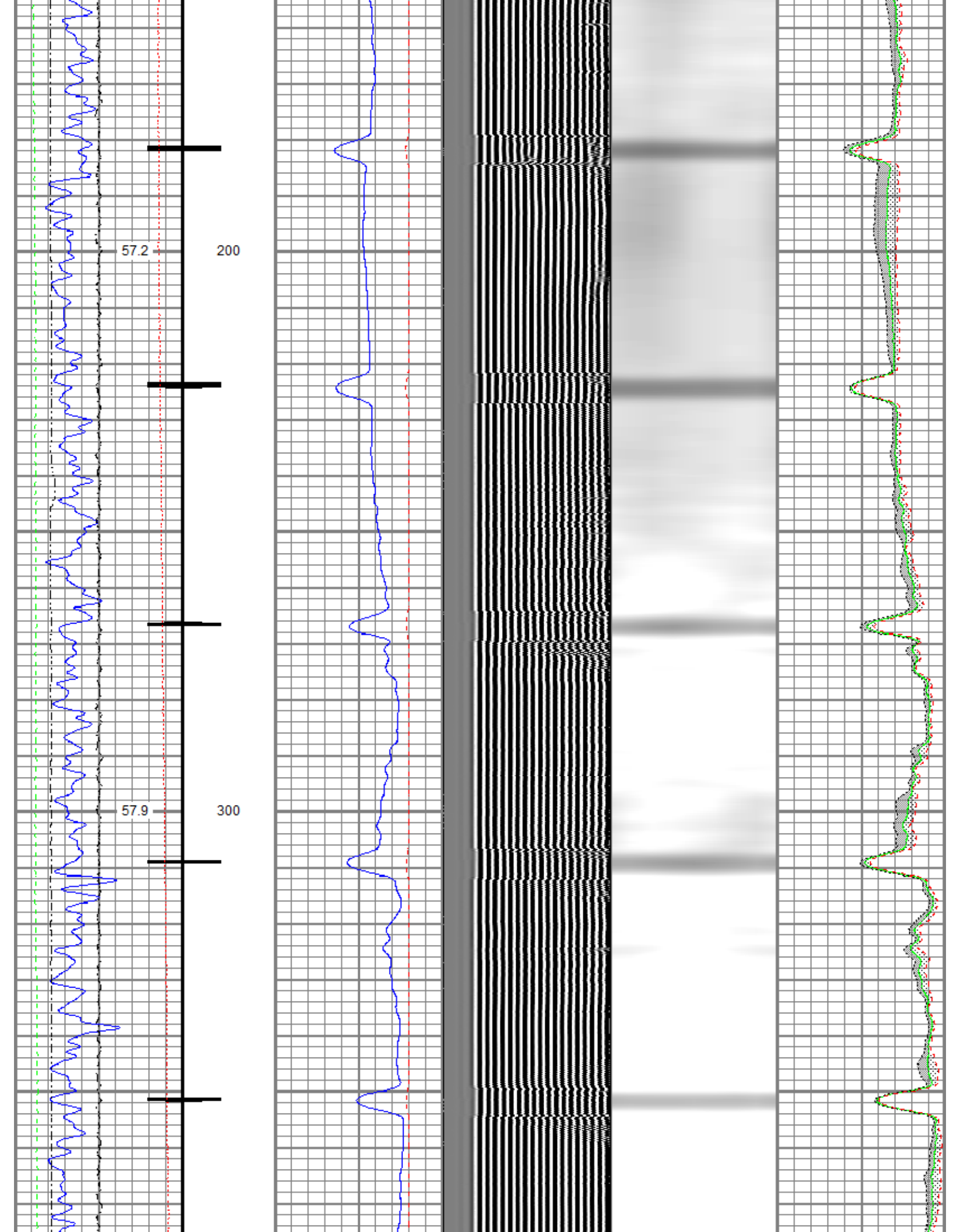


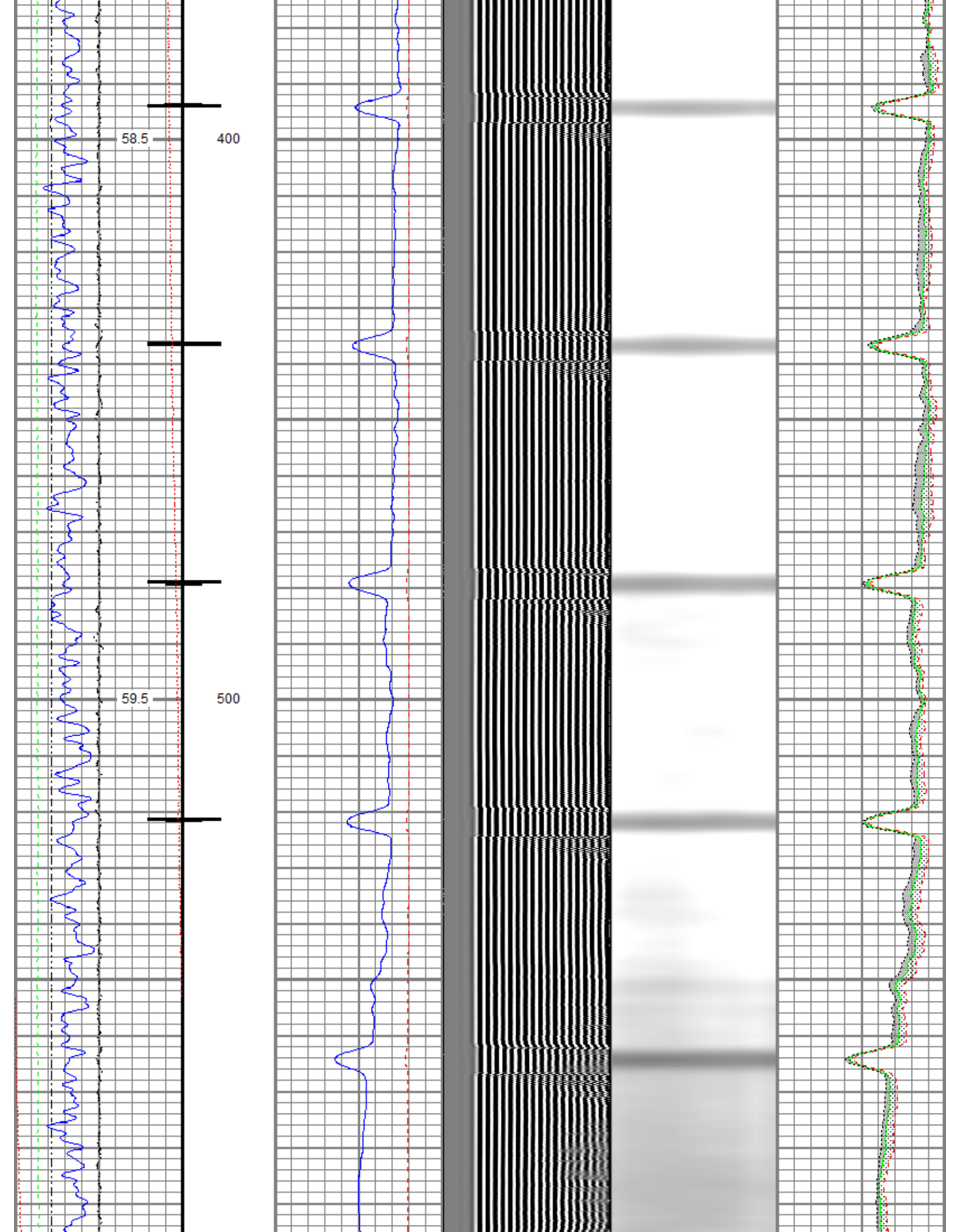
Recorded With 0 PSI Surface Induced Pressure

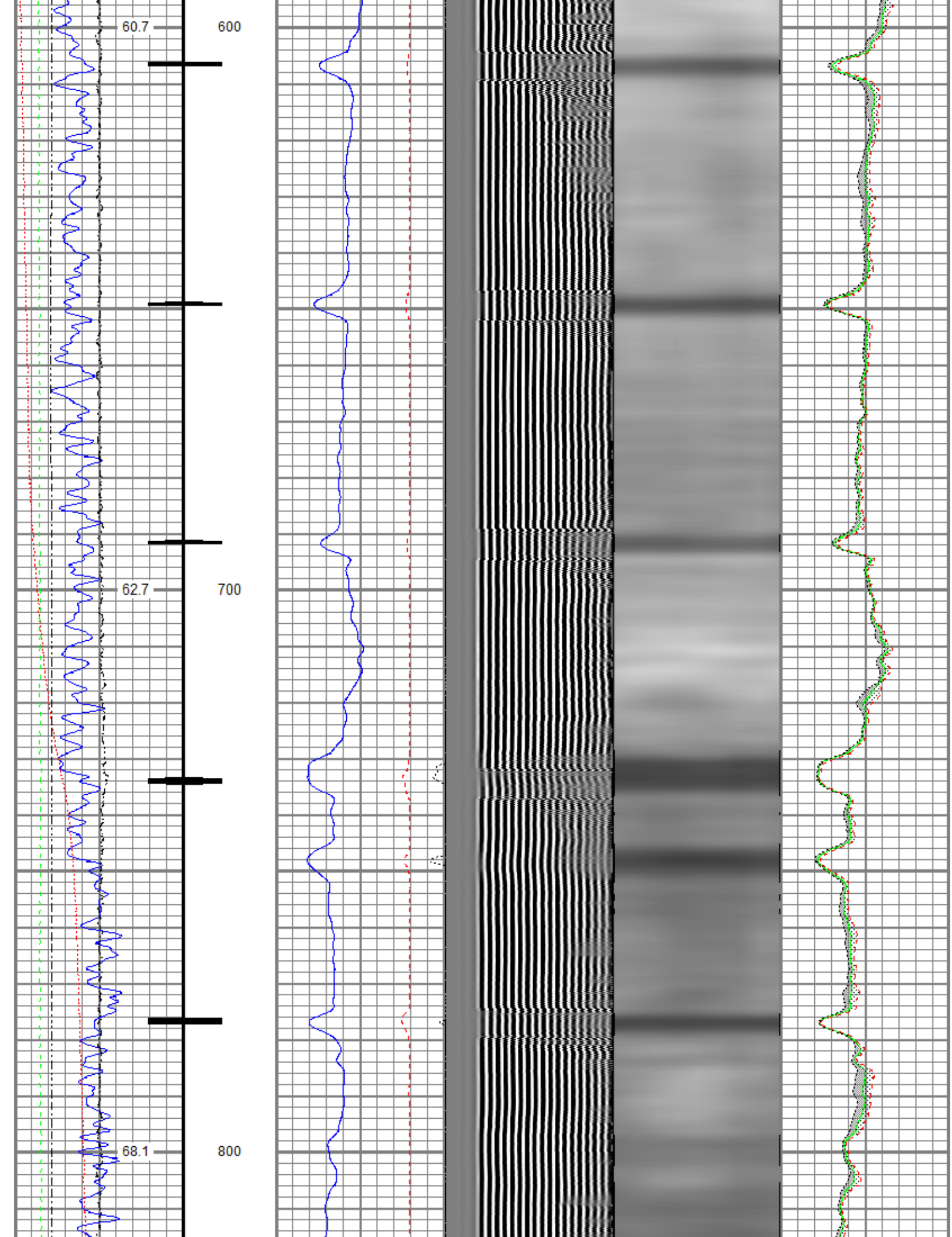
Database File	oxy\0512324550_oxy_weld 21-2_rbl_04-27-21\0512324550_oxy_weld 21-2_rbl_04-27-21.db
Dataset Pathname	pass10.3
Presentation Format	ros_radri
Dataset Creation	Thu Apr 29 09:38:23 2021
Charted by	Depth in Feet scaled 1:240

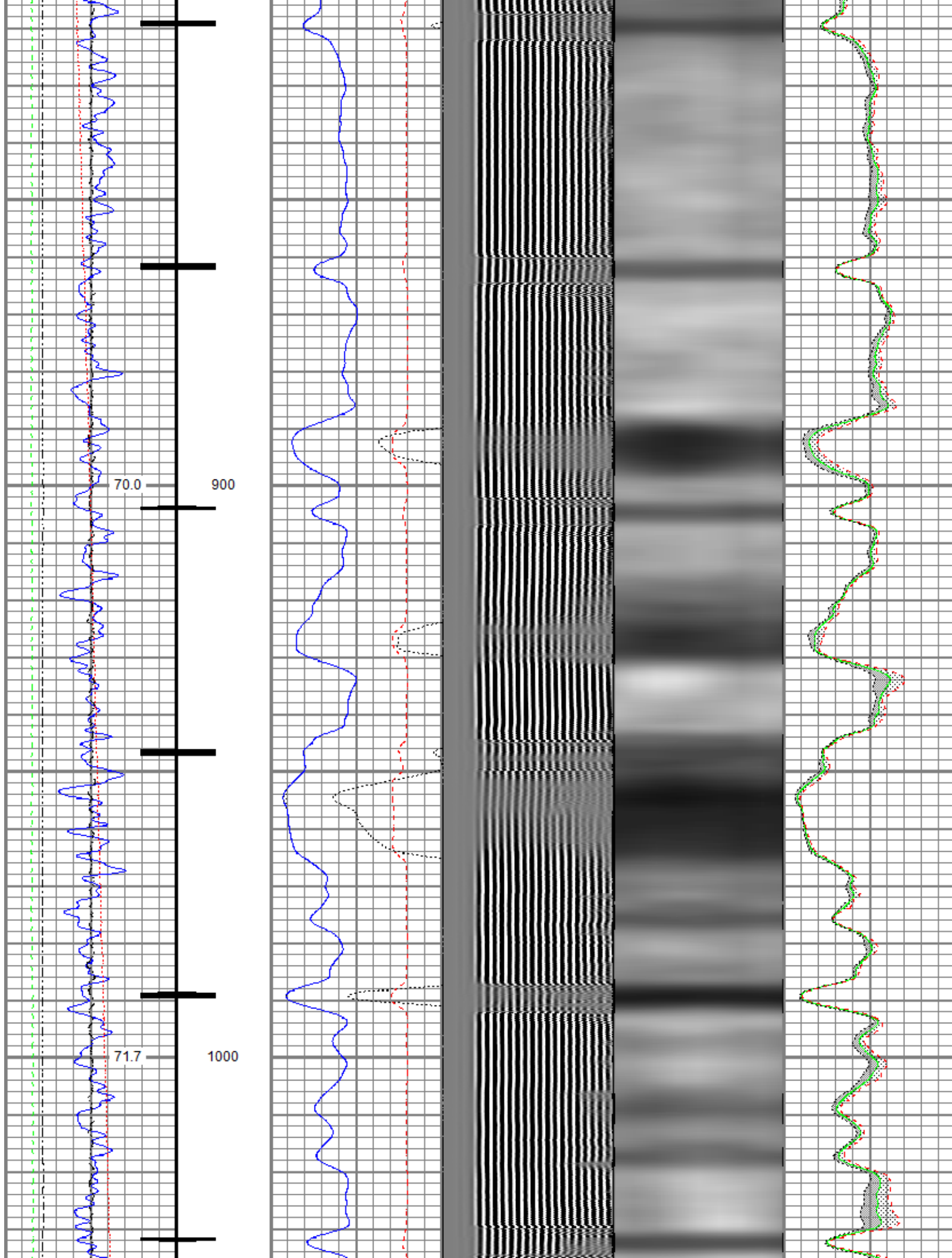
Gamma Ray	0	3' Amplitude (mV)	100	5' Variable Density Log	Sector Map	0	Average Amplitude	100
(GAPI)	120	3' Amplitude x 5	200	(u sec)	1200		Minimum Amplitude	
Casing Collar Locator		0	(mV)	20		0		100
0 Temperature (degF)	20	3' Travel Time					Maximum Amplitude	
Line Speed		650	(u sec)	150		0		100
-150 (ft/min)	150							
0 Line Tension (lb)	2000							
Differential Temperature								
-2 (degF)	2							

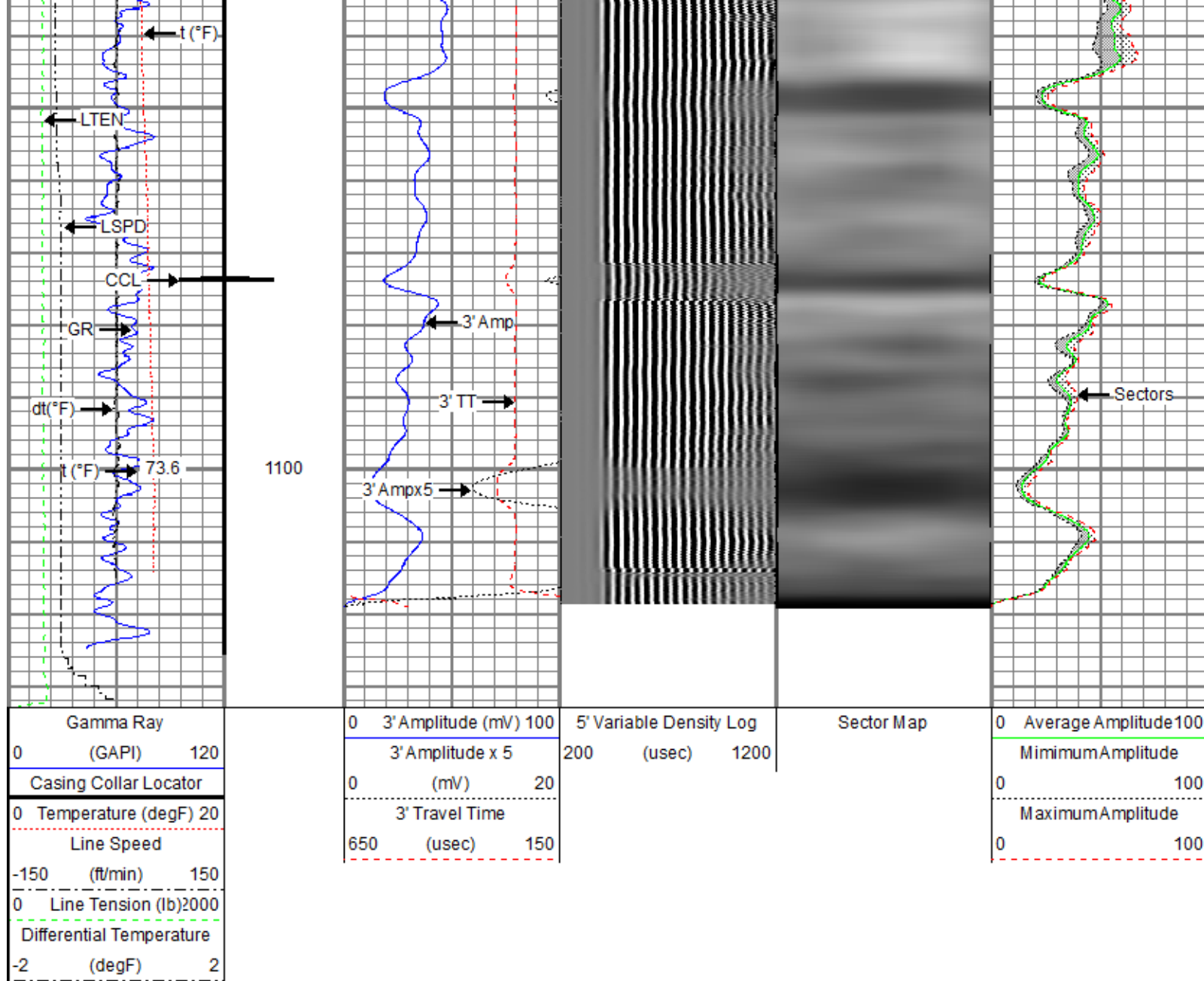








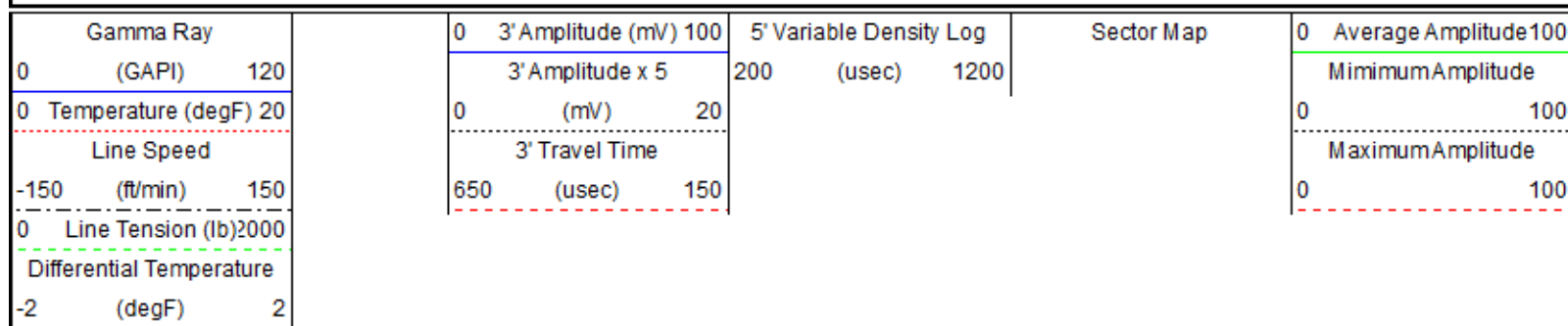


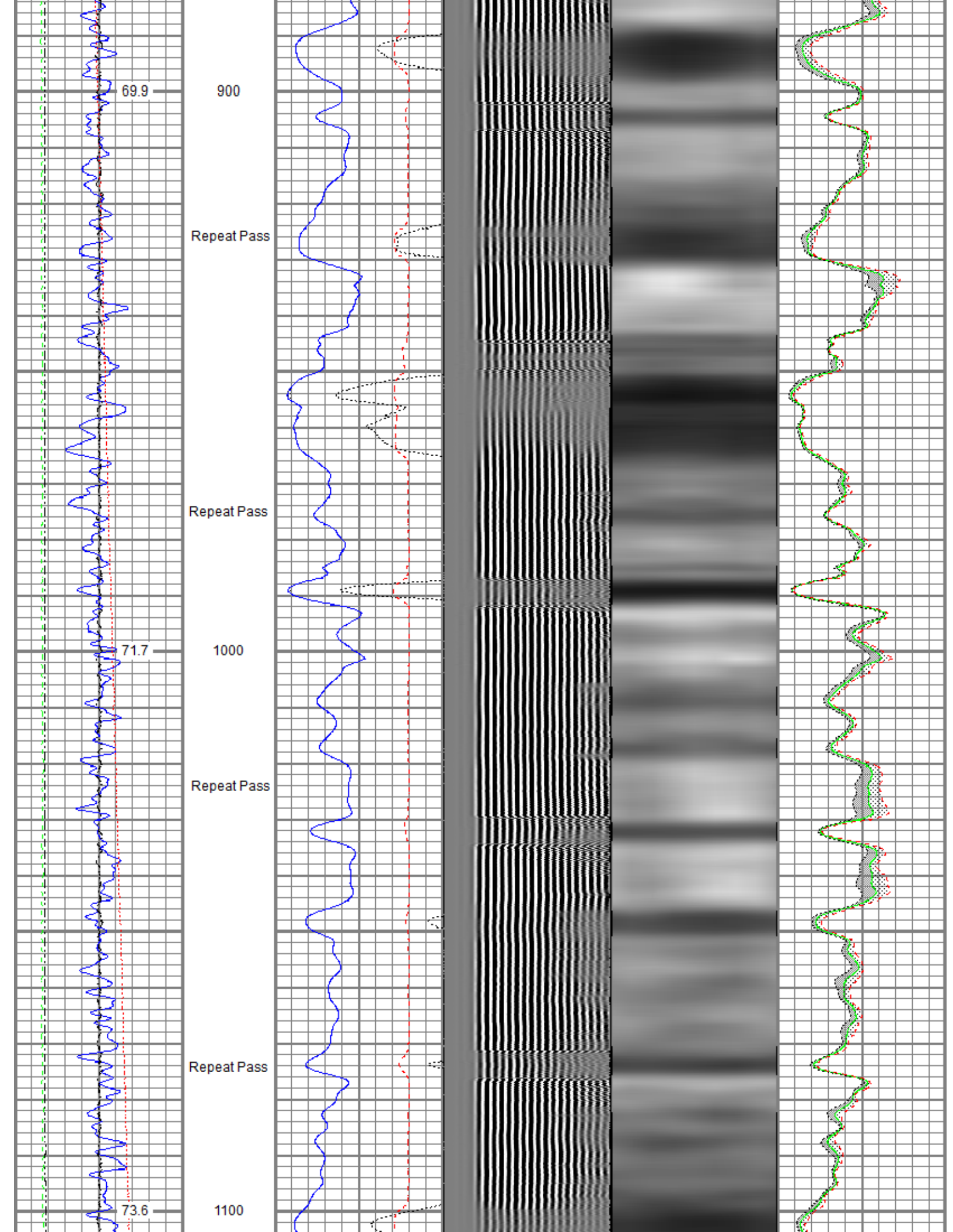


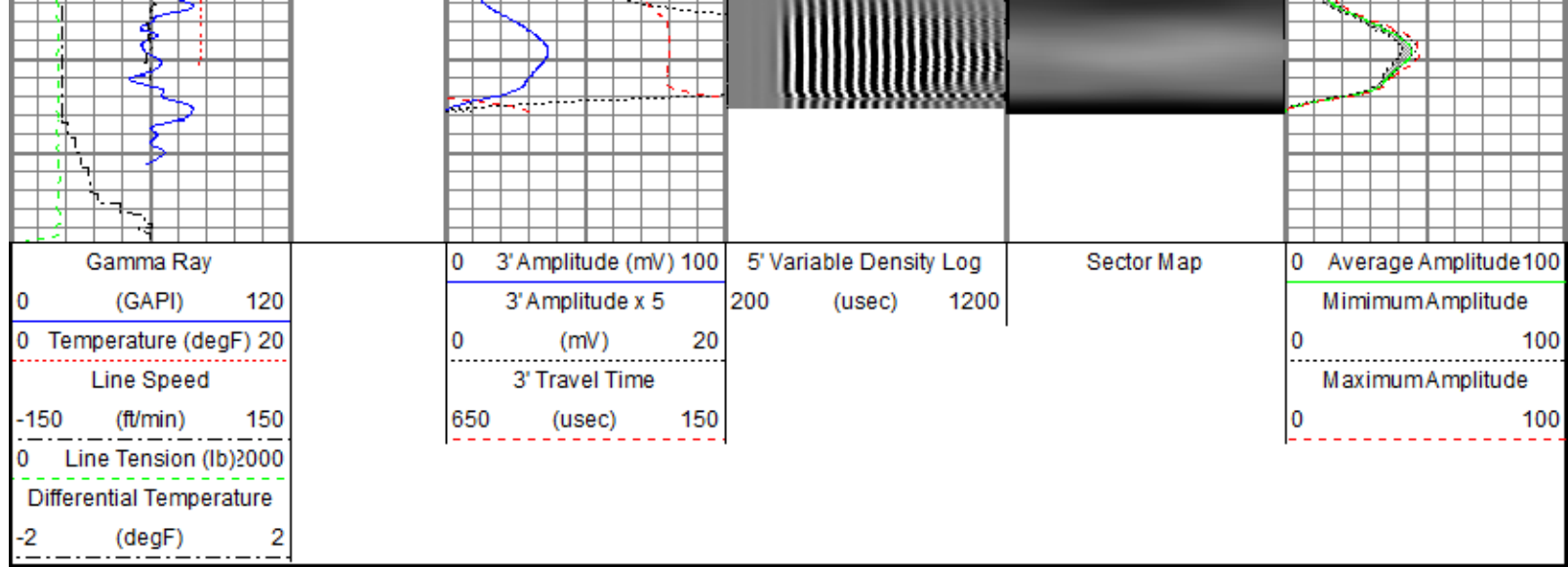
Repeat Pass

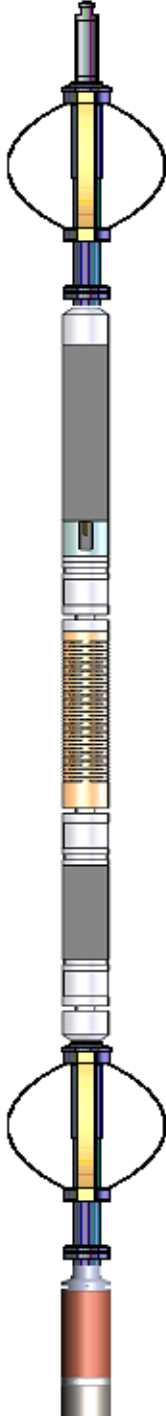
Recorded With 0 PSI Surface Induced Pressure

Database File oxy\0512324550_oxy_weld 21-2_rbl_04-27-21\0512324550_oxy_weld 21-2_rbl_04-27-21.db
 Dataset Pathname pass6.2
 Presentation Format ros_radii
 Dataset Creation Thu Apr 29 10:13:34 2021
 Charted by Depth in Feet scaled 1:240







Sensor	Offset (ft)	Schematic	Description	Length (ft)	O.D. (in)	Weight (lb)
TEMP	17.29		Titan CHD-14375 GO	1.03	1.44	3.60
			Titan 1-7/16" Assembled Electric Cable Head with 1" Fishing Neck			
			Probe CENT-2750	2.88	2.75	20.00
			Probe 2-3/4" Electric Inline Bowspring Centralizer			
WVFS8	15.06		Probe Radii-2750 RBT (FW1305-096)	9.39	2.75	105.00
WVFS7	15.06		Probe 2-3/4" Radial Cement Bond Tool with Integral Temperature Sub			
WVFS6	15.06					
WVFS5	15.06					
WVFS4	15.06					
WVFS3	15.06					
WVFS2	15.06					
WVFS1	15.06					
WVFCAL	15.06					
WVF3FT	15.06					
WVF5FT	14.06					
CCL\$2 CCL\$1	7.05 7.05		Probe CENT-2750	2.88	2.75	20.00
			Probe 2-3/4" Electric Inline Bowspring Centralizer			

	Raw (v)	Calibrated (v)	Results
	Zero	Zero	Offset
3'	0.000	0.000	0.000
5'	0.000	0.000	0.000
SUM			
S1	0.000	0.000	0.000
S2	0.000	0.000	0.000
S3	0.000	0.000	0.000
S4	0.000	0.000	0.000
S5	0.000	0.000	0.000
S6	0.000	0.000	0.000
S7	0.000	0.000	0.000
S8	0.000	0.000	0.000

Temperature Calibration Report			
Serial Number:	FW1305-096		
Tool Model:	2750 RBT		
Performed:	Mon Oct 19 14:19:51 2020		
	Reference	Reading	
Low Reference:	100.00 degF	109.43	degF
High Reference:	350.00 degF	405.87	degF
Gain:	0.84		
Offset:	7.72		
Delta Spacing	1		

	Company	Kerr-McGee Oil & Gas Onshore, L.P.
	Well	Weld 21-2
	Field	Wattenberg
	County	Weld
	State	Colorado