



SECTOR CEMENT BOND
GAMMA RAY
CCL LOG

Comp.	OCCIDENTAL PETROLEUM CORP.			
Well	WELD 21-2			
Field	WATTENBERG			
Co.	WELD			
State	COLORADO			
Company	OCCIDENTAL PETROLEUM CORP.			
Well	WELD 21-2			
Field	WATTENBERG			
County	WELD		State	COLORADO
Location:	API # : 05-123-24550		Other Services	
1029' FNL & 1570' FEL				N/A
Permanent Datum	GL	TWP 2N	RGE 68W	
Log Measured From	KB	16'	Elevation	4830
Drilling Measured From	N/A		Above Perm. Datum	
			K.B.	4846'
			D.F.	N/A
			G.L.	4830'

Date of Service	19-JUL-2022				
Run Number	ONE				
Depth Driller or PBTD	N/A				
Depth Logger	1700'				
Bottom Log Interval	1690'				
Top Log Interval	SURFACE				
Open Hole Size	N/A				
Type Fluid	H2O				
Fluid Level	SURFACE				
Fluid Density	N/A				
Max. Recorded Temperature	N/A				
Max. Wellhead Pressure	0 PSI				
Wellhead Connection	7-1/6" 5K				
Estimated Cement Top	N/A				
Unit Number	1007				
Wireline Size	9/32"				
Location	BRIGHTON				
Recorded By	J. KOTT				
Witnessed By	MR. ISMAEL SALINAS				
Surface Casing	Size	Wt/Ft	Top	Bottom	
	8-5/8"	24#	SURFACE	728'	
Production Casing					
Liner Casing	4-1/2"	11.6#	SURFACE	7590'	
Tubing Record					

<<< Fold Here >>>

All interpretations are opinions based on inferences from electrical or other measurements and Ranger Energy Services cannot and does not guarantee the accuracy or correctness of any interpretation, and Ranger Energy Services will not be liable or responsible for any loss, costs, damages, or expenses incurred or sustained by anyone resulting from any interpretation made by any of our officers, agents or employees.

Comments

N/A DENOTES NOT AVAILABLE OR NON-APPLICABLE.
INTERNAL CAL. REFERENCED.
LOG CORRELATED TO K.B. PER REQUEST

THANK YOU FOR USING RANGER ENERGY SERVICES! FIELD TICKET #

Your Ranger Energy Services Crew	Tool Data - Services	Serial Number
Engineer: J. KOTT Operator: J. SMITH Operator: B. TOOLEY Operator:		

Quantity	Offset (ft)	Schematic	Description	Length (ft)	O.D. (in)	Weight (lb)
----------	-------------	-----------	-------------	-------------	-----------	-------------

Log Variables

DatabaseC:\ProgramData\Warrior\Data\445702_oxy_weld 21-2_0512324550_20220719_scbl-gr-cc
Dataset field/well/run1/pass6/_vars_

Top - Bottom

BOREID in 8.75	BOTTEMP degF 100	CASEOD in 4.5	CASETHCK in 0.408	CASEWGHT lb/ft 11.6	MAXAMPL mV 81.2	MINAMPL mV 1	MINATTN db/ft 0.8
PERFS No	PPT usec 0	SRFTEMP degF 0	TDEPTH ft 0				

Variable Description

BOREID : Borehole I.D.
BOTTEMP : Bottom Hole Temperature
CASEOD : Casing O.D.
CASETHCK : Casing Thickness

CASEWGHT : Casing Weight
MAXAMPL : Maximum Amplitude
MINAMPL : Minimum Amplitude
MINATTN : Minimum Attenuation

PERFS : Perforation Flag
PPT : Predicted Pipe Time
SRFTEMP : Surface Temperature
TDEPTH : Total Depth

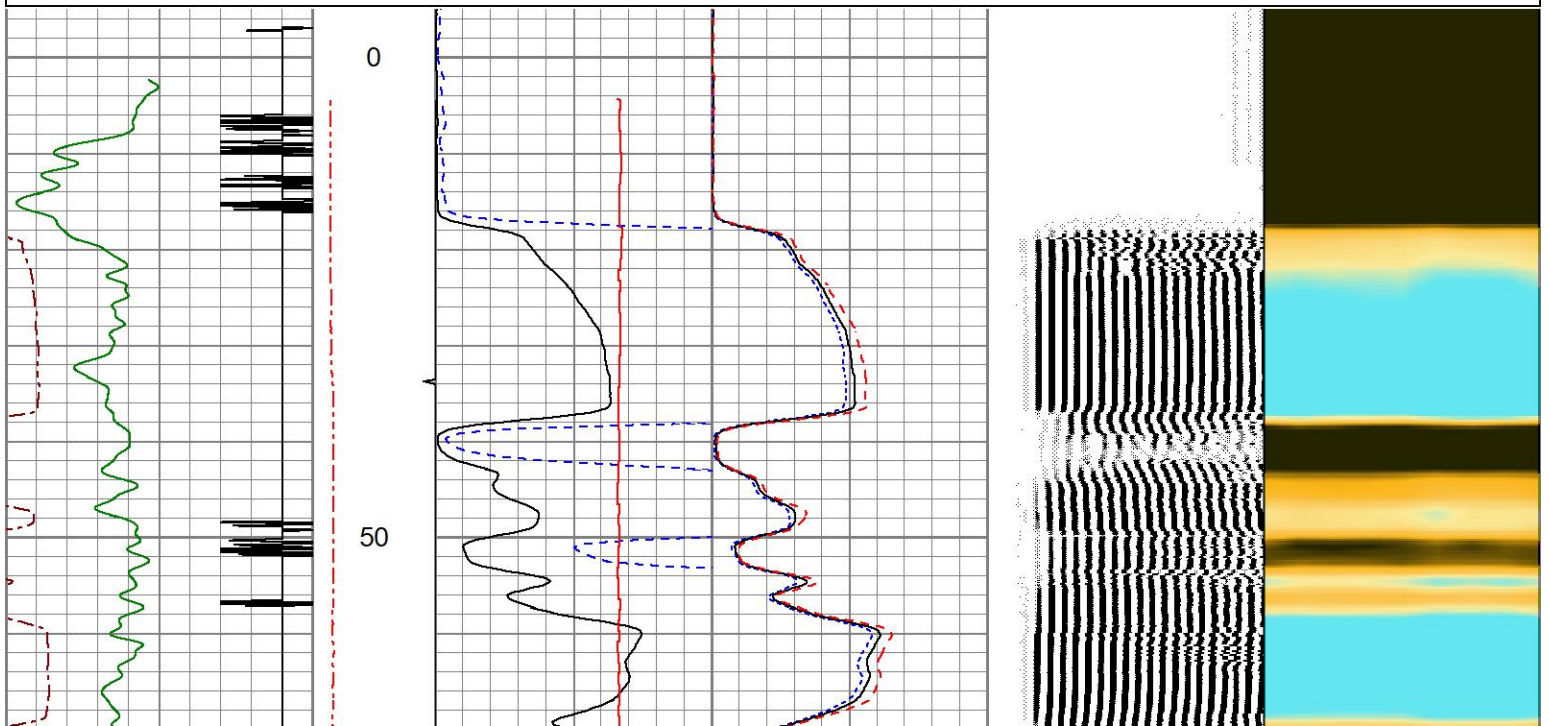


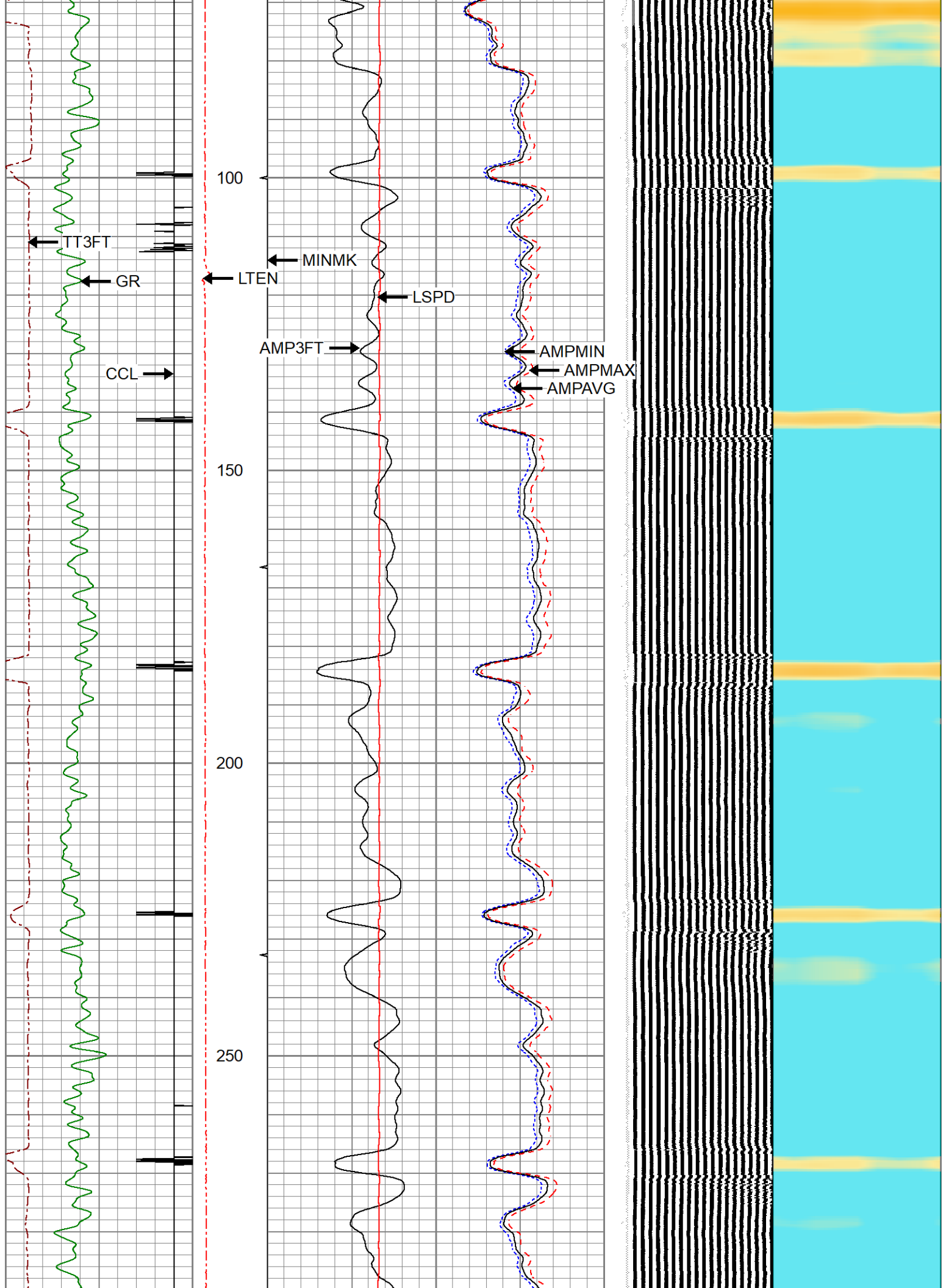
MAIN PASS

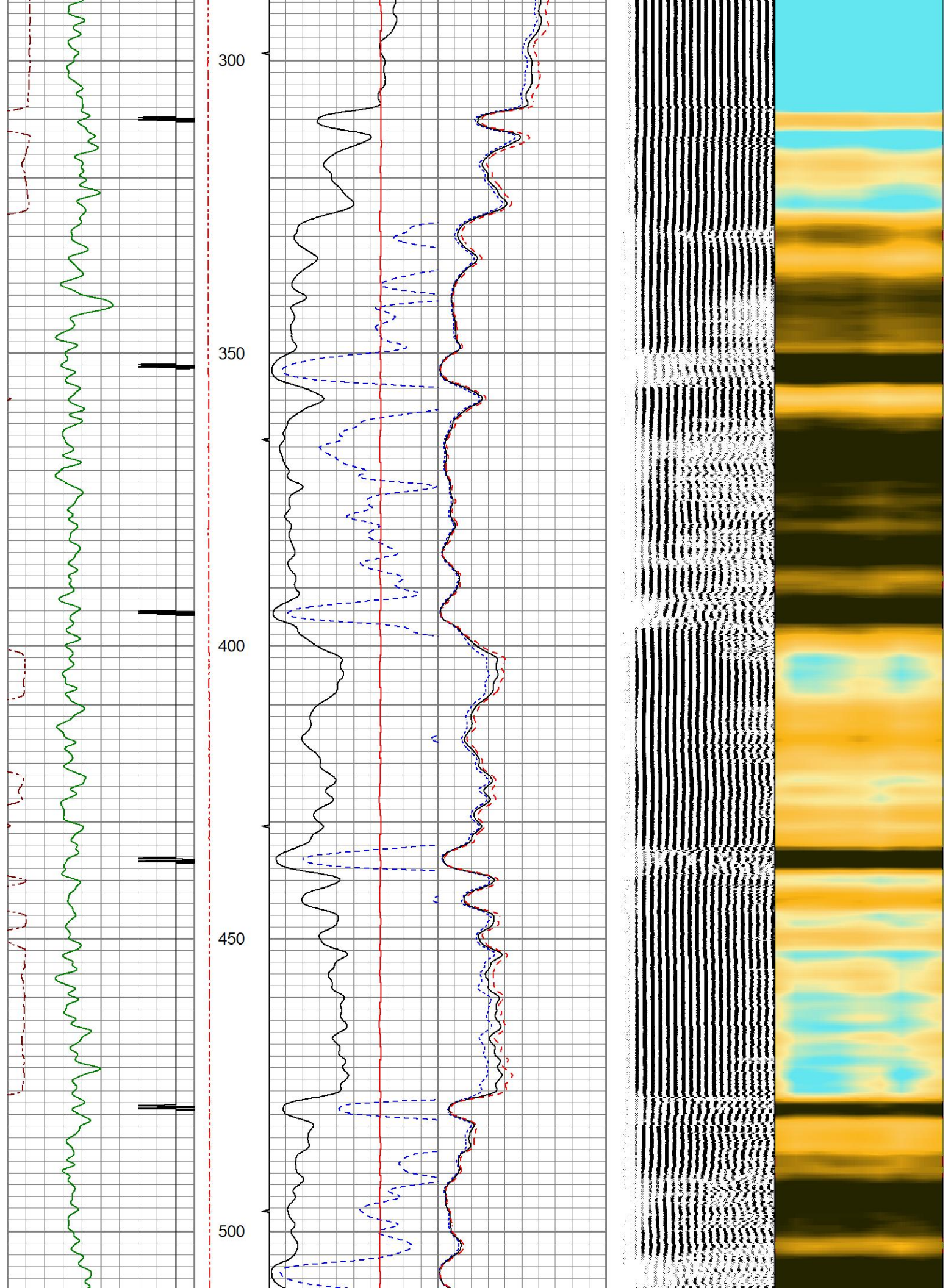
0 PSI APPLIED AT SURFACE

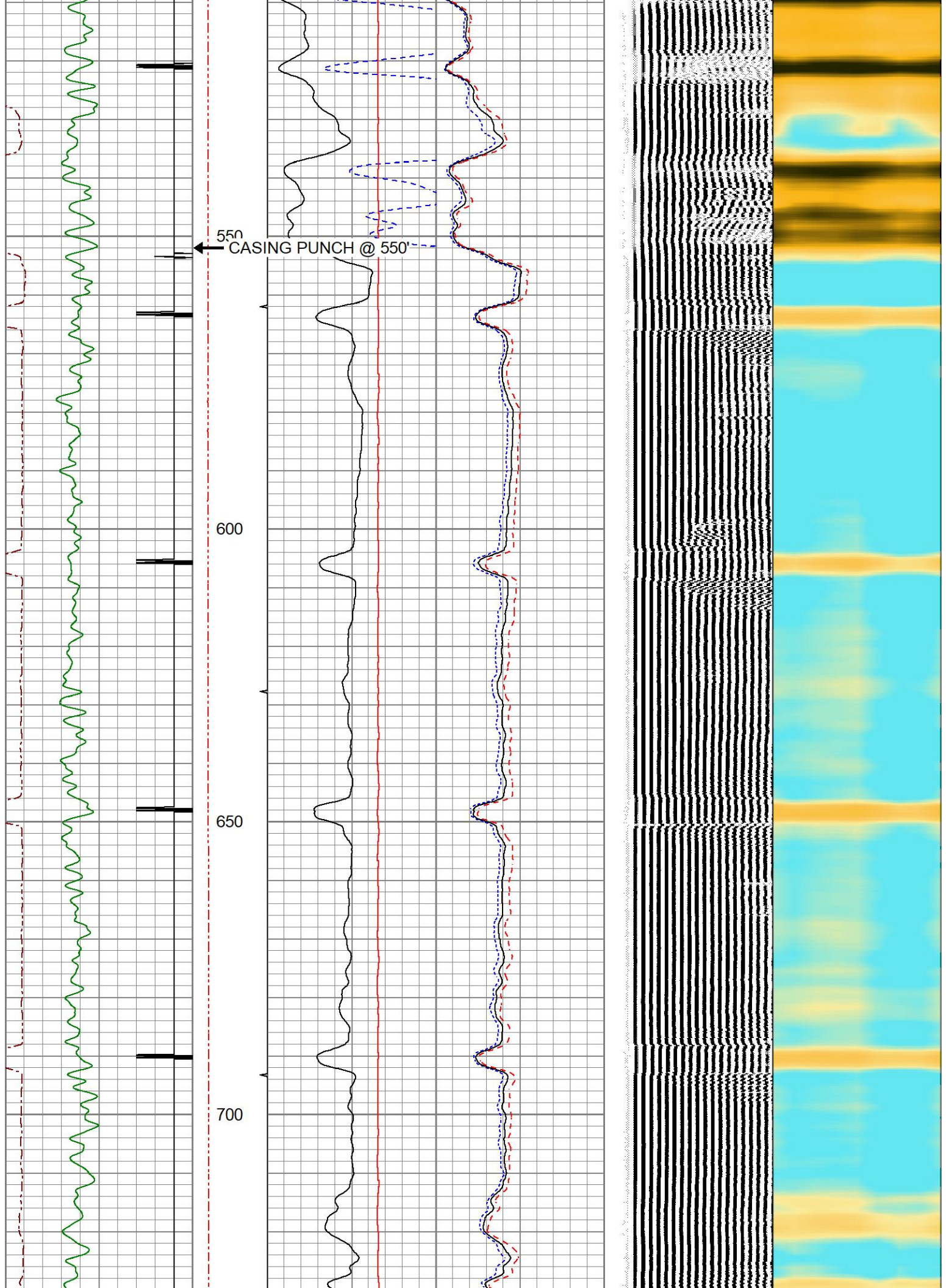
Database File 445702_oxy_weld 21-2_0512324550_20220719_scbl-gr-ccl.db
Dataset Pathname pass6
Presentation Format res_scbl_co
Dataset Creation Tue Jul 19 10:32:38 2022
Charted by Depth in Feet scaled 1:240

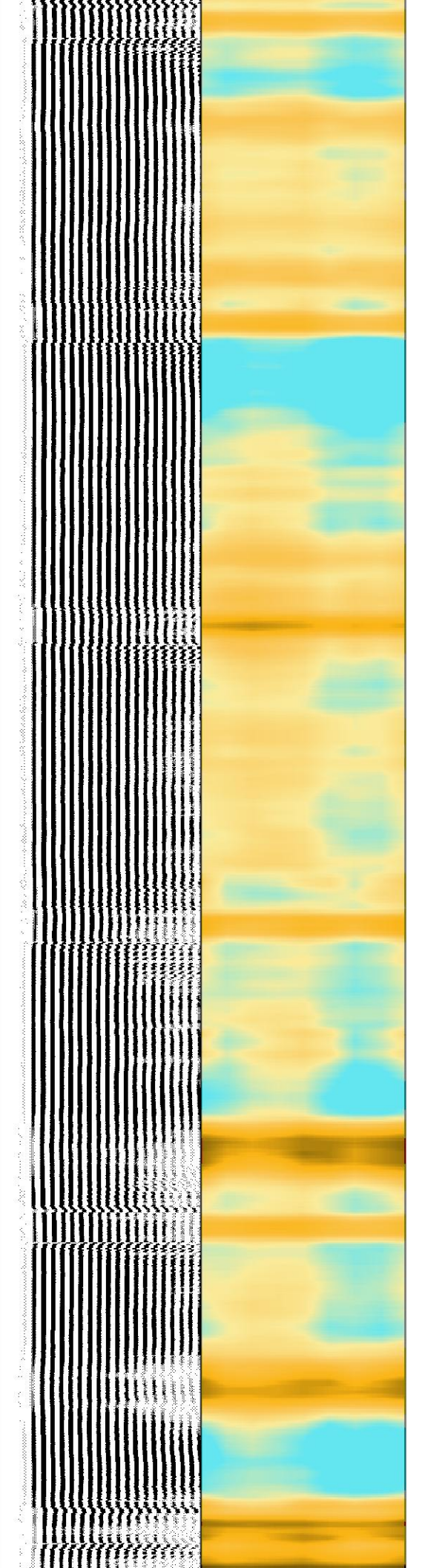
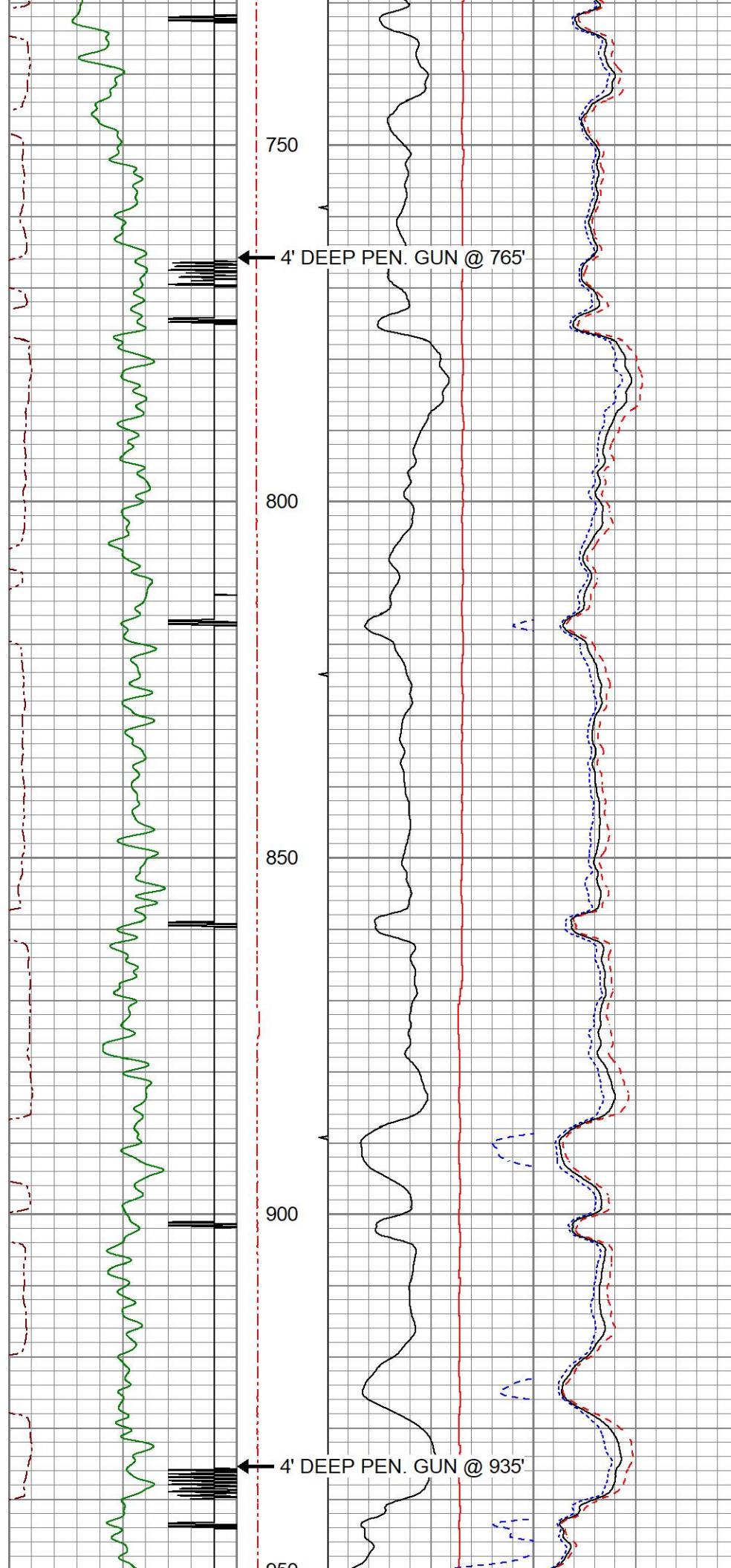
250 3FT TT (usec) 150	LTEN	3' Amplitude	0 Sector Min Amp150	200 VDL (usec) 1200	1 Sector Map 8
-9 Collar Locator 1	(lb)	(mV) 100	Sector Avg Amp		
Gamma Ray	0 2000	3' Amplified	0 150		
0 (GAPI) 150	MINMK	Amplitude X 5	Sector Max Amp		
	10 0	(mV) 20	0 150		
		0 LSPD (ft/min)-100			

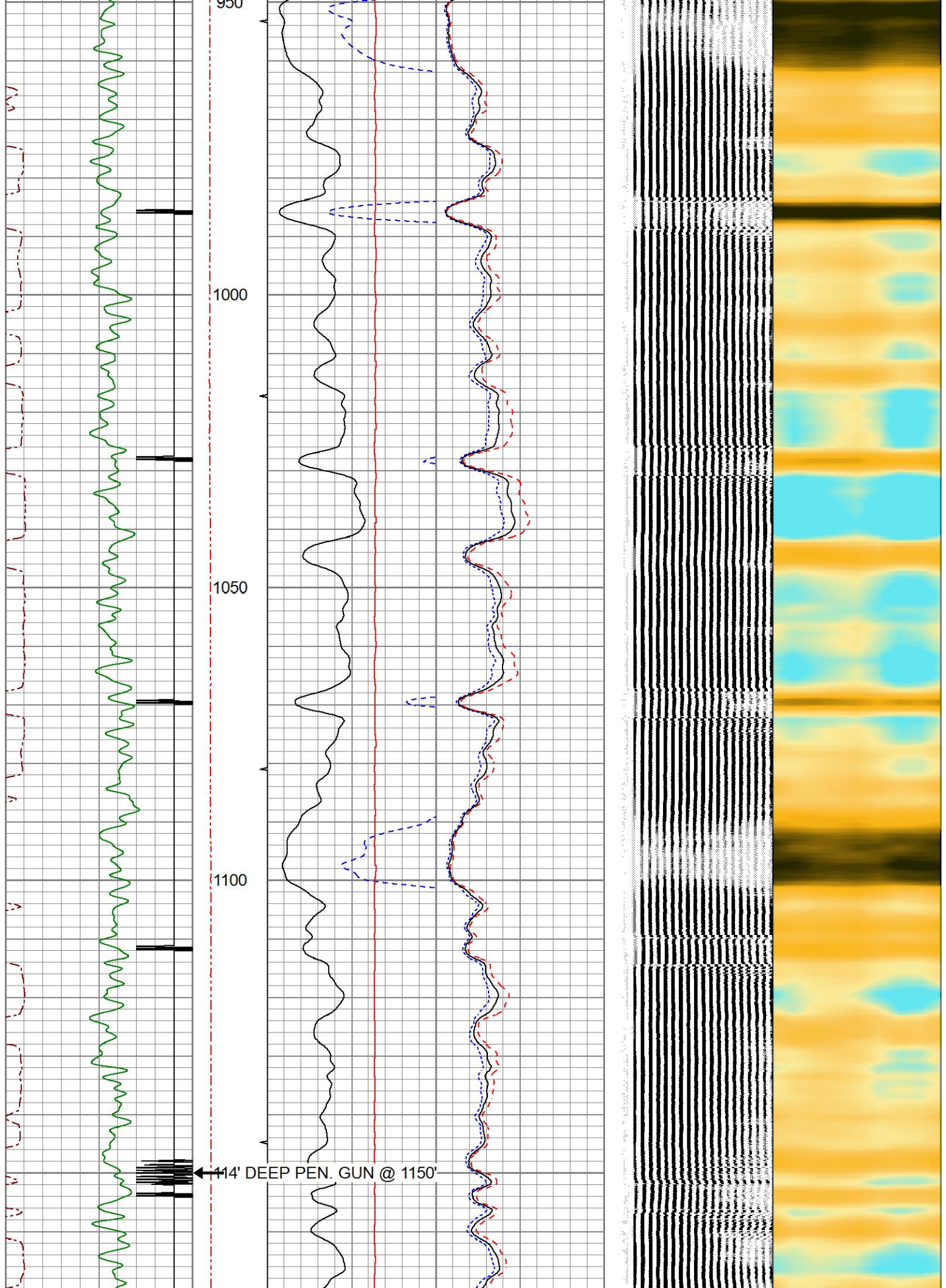


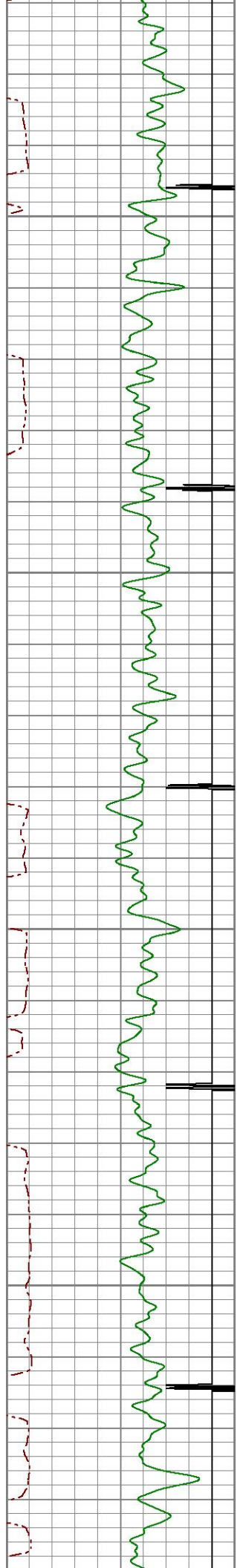










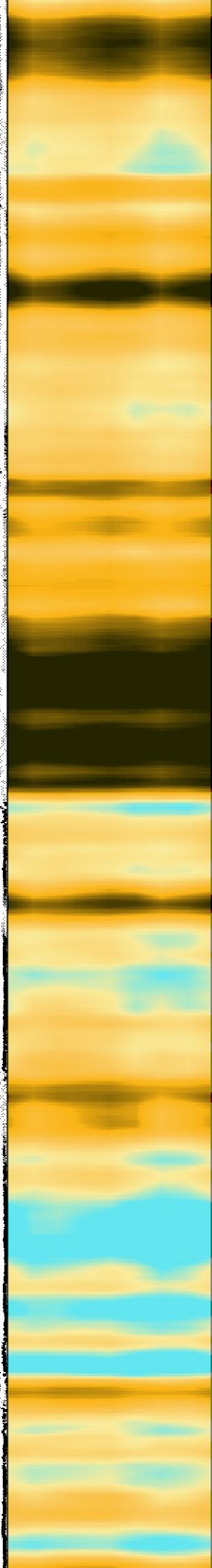
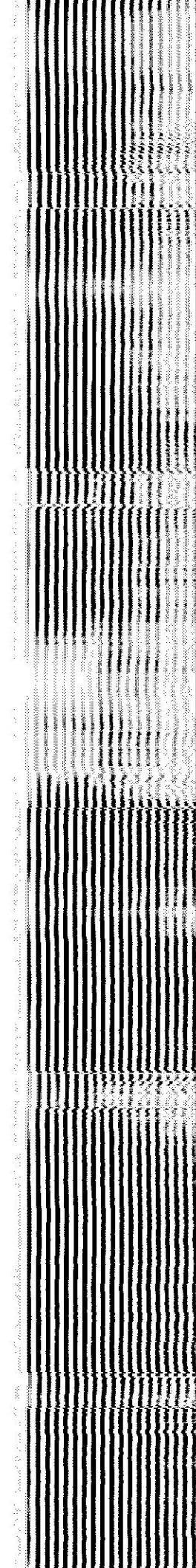
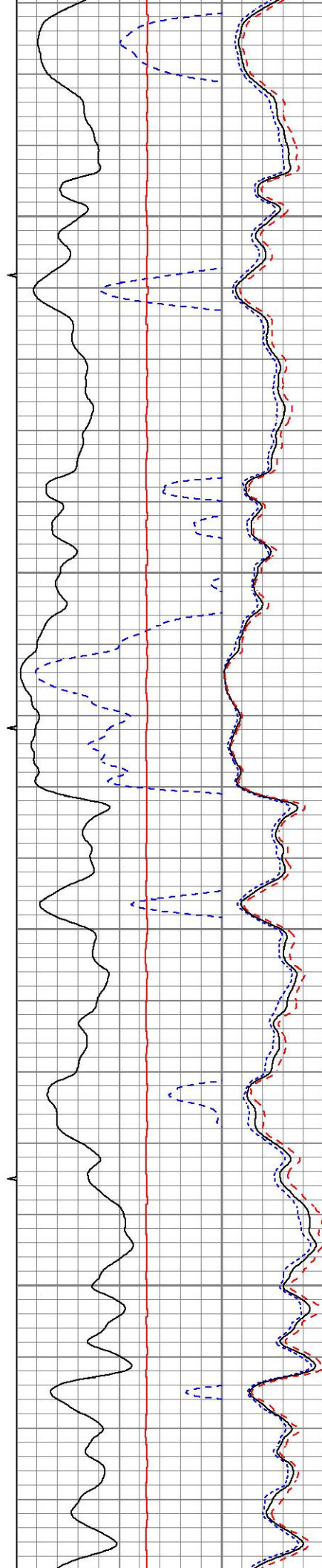


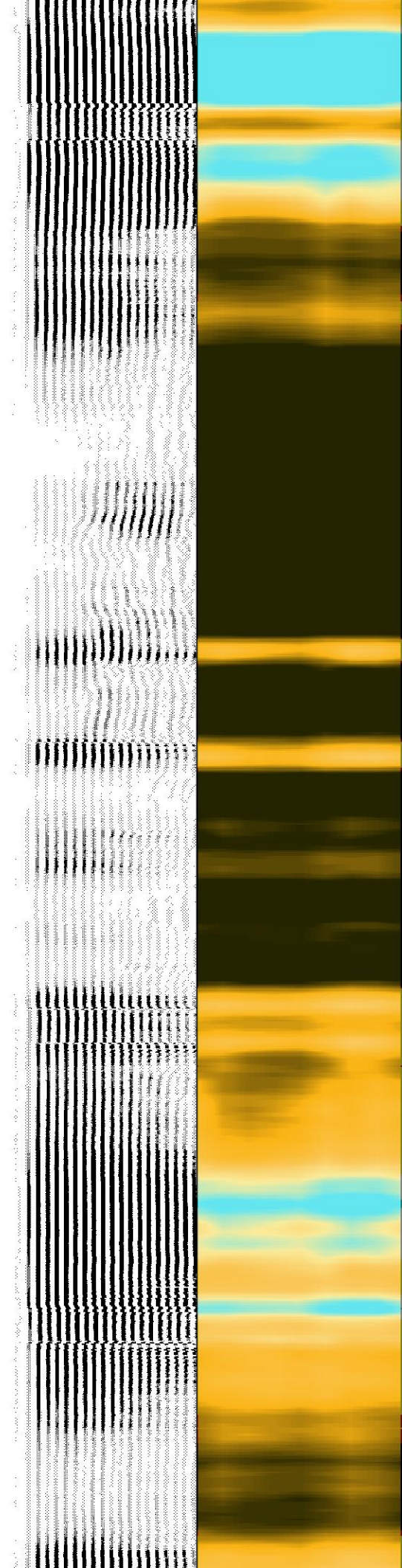
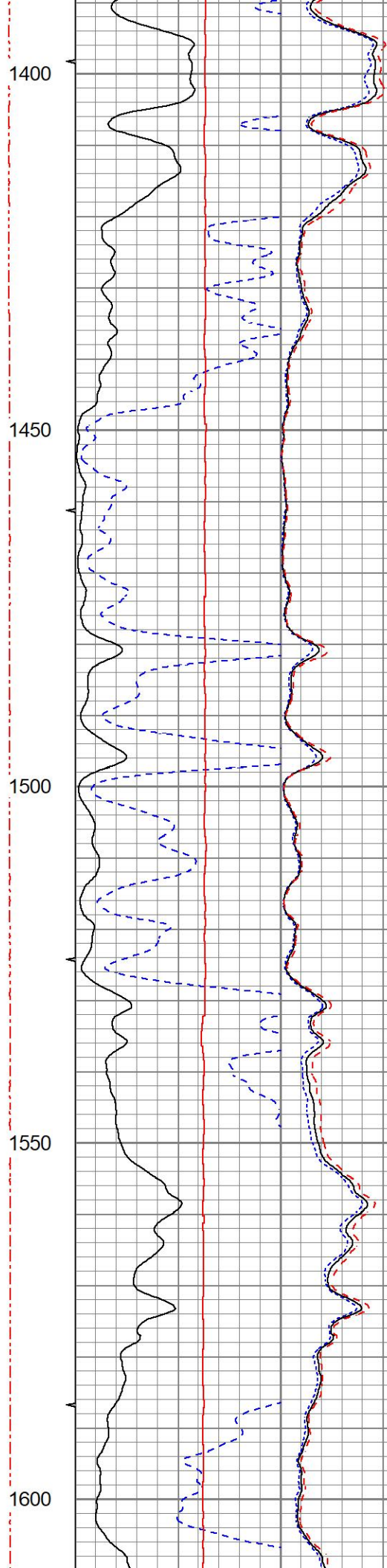
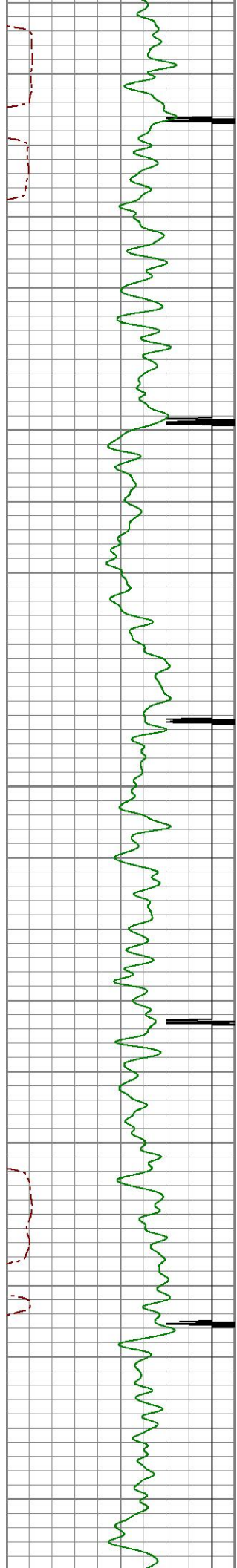
1200

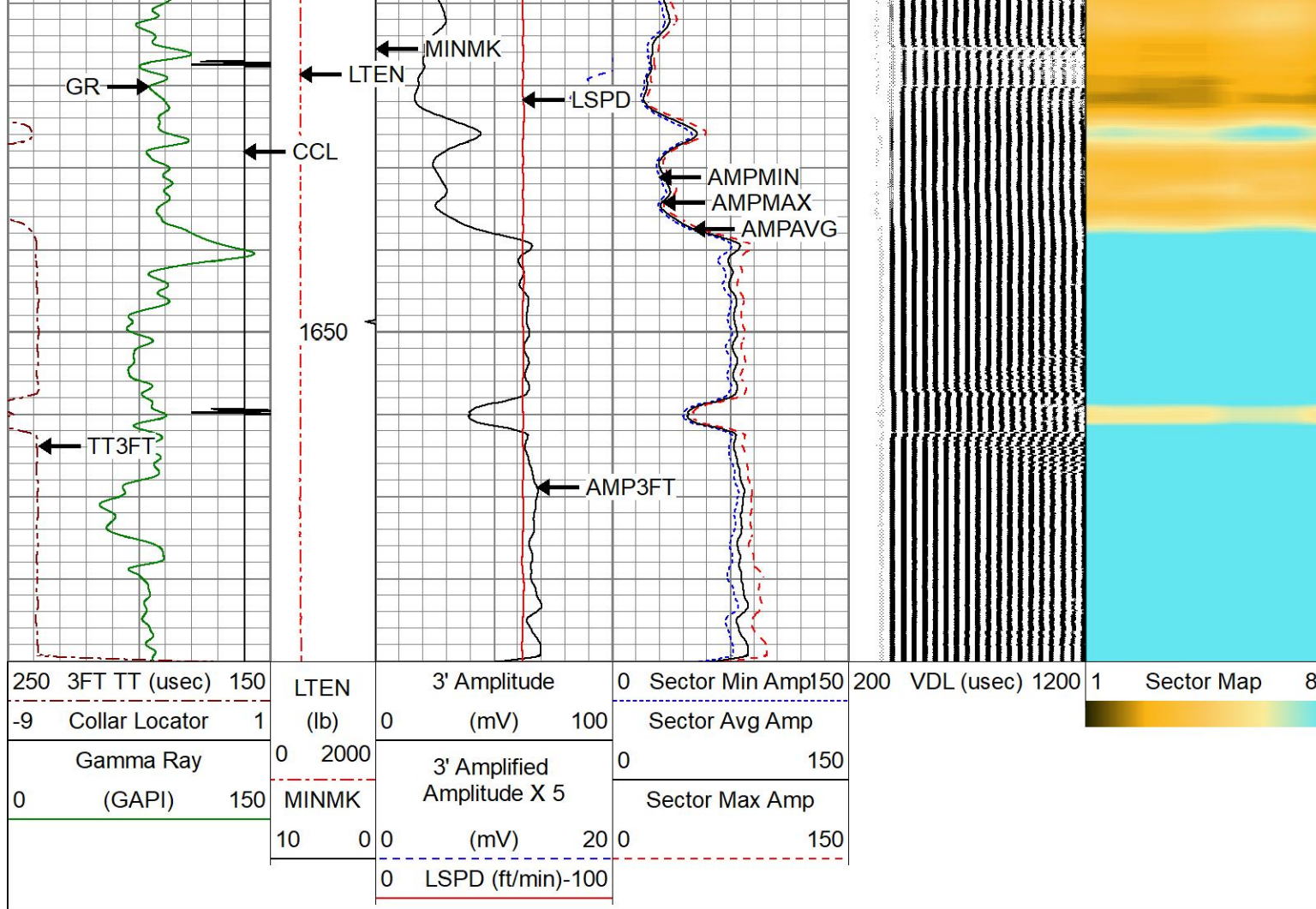
1250


1300

1350





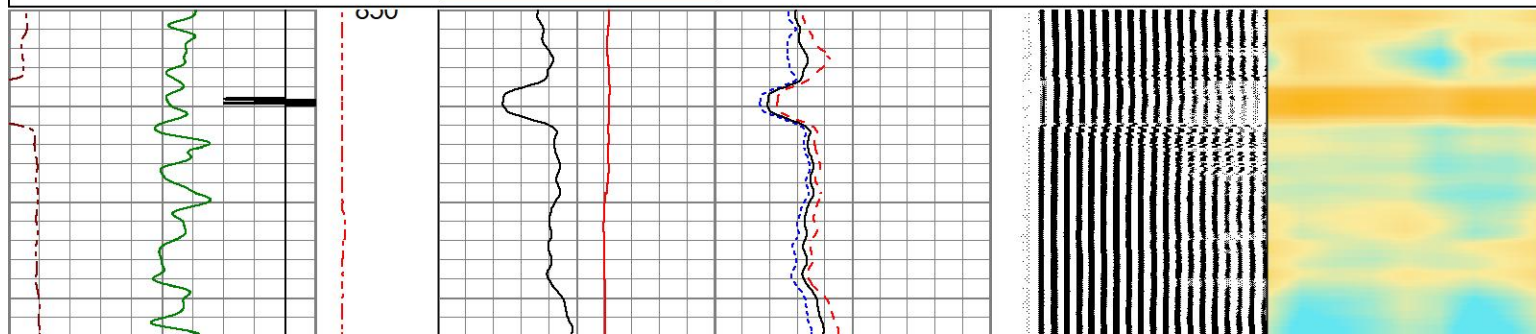
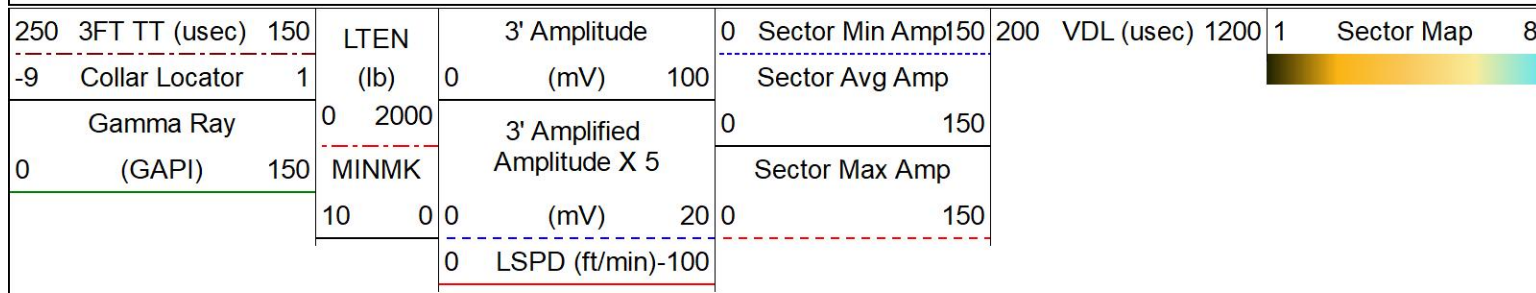


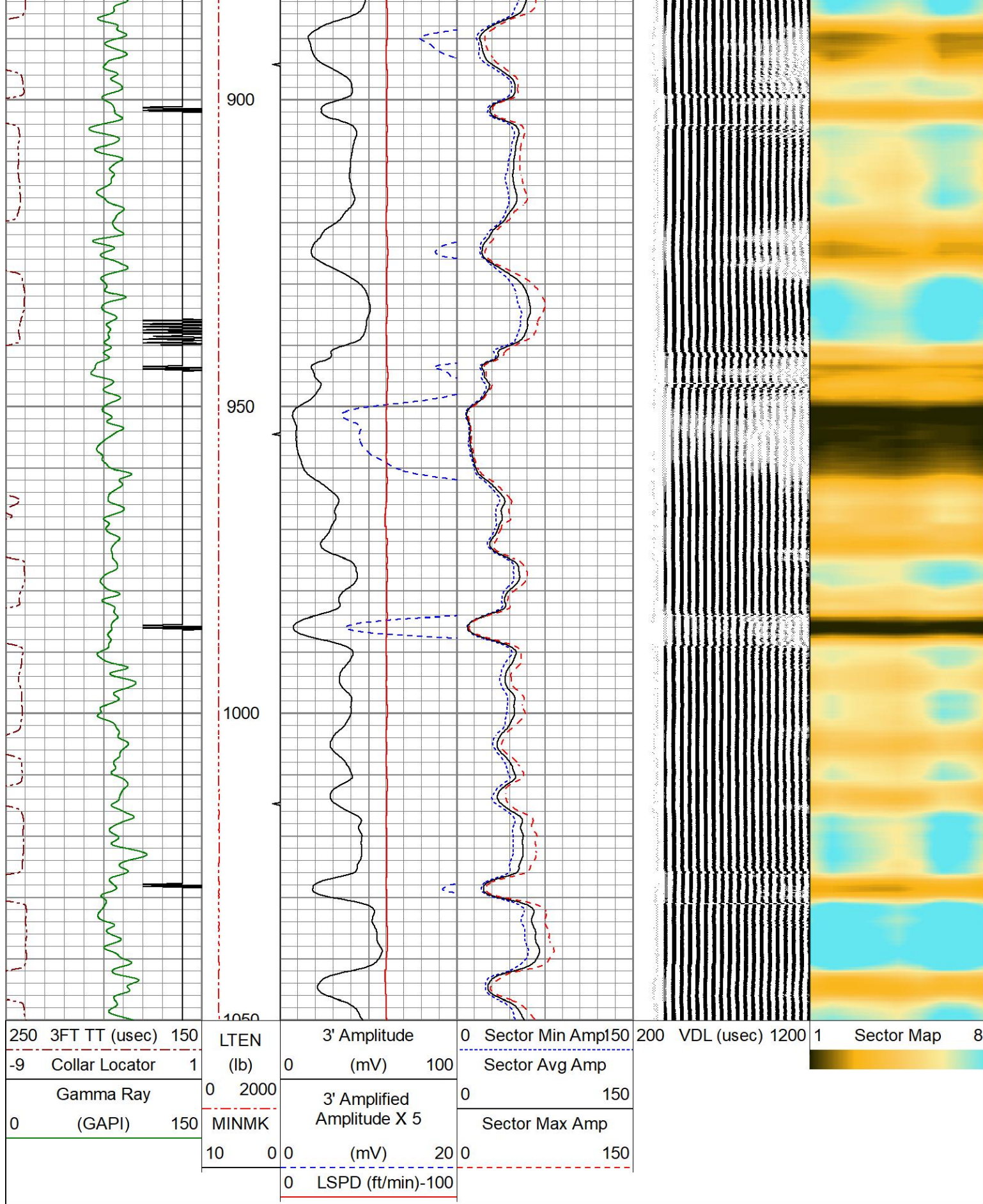


REPEAT PASS

0 PSI APPLIED AT SURFACE

Database File	445702_oxy_weld 21-2_0512324550_20220719_scbl-gr-ccl.db
Dataset Pathname	pass4
Presentation Format	res_scbl_co
Dataset Creation	Tue Jul 19 10:21:08 2022
Charted by	Depth in Feet scaled 1:240





Calibration Report

Database File 445702_oxy_weld 21-2_0512324550_20220719_scbl-gr-ccl.db
Dataset Pathname pass6
Dataset Creation Tue Jul 19 10:32:38 2022

Gamma Ray Calibration Report

Serial Number:	071129	
Tool Model:	Probe275dig	
Performed:	Sun Mar 6 17:32:26 2016	
Calibrator Value:	1.0	GAPI
Background Reading:	0.0	cps
Calibrator Reading:	1.0	cps
Sensitivity:	0.8500	GAPI/cps

Segmented Cement Bond Log Calibration Report

Serial Number:	080114	
Tool Model:	RBTC3	
Calibration Casing Diameter:	4.500	in
Calibration Depth:	25.642	ft

Master Calibration, performed Tue Jul 19 10:10:44 2022:

	Raw (v)		Calibrated (mv)		Results	
	Zero	Cal	Zero	Cal	Gain	Offset
3'	0.000	1.011	0.000	81.196	80.340	0.000
CAL	0.000	1.009				
5'	0.000	0.958	0.000	81.196	84.797	0.000
SUM						
S1	0.000	1.002	0.000	100.000	99.797	0.000
S2	0.000	1.007	0.000	100.000	99.310	0.000
S3	0.000	1.002	0.000	100.000	99.820	0.000
S4	0.000	1.011	0.000	100.000	98.944	0.000
S5	0.000	1.020	0.000	100.000	98.082	0.000
S6	0.000	1.006	0.000	100.000	99.448	0.000
S7	0.000	1.015	0.000	100.000	98.486	0.000
S8	0.000	1.011	0.000	100.000	98.910	0.000

Internal Reference Calibration, performed (Not Performed):

	Raw (v)		Calibrated (v)		Results	
	Zero	Cal	Zero	Cal	Gain	Offset
CAL	0.000	0.000	0.000	1.009	1.000	0.000

Air Zero Calibration, performed Tue Jul 19 10:09:49 2022:

	Raw (v)		Calibrated (v)		Results	
	Zero		Zero			Offset
3'	0.000		0.000			0.000
5'	0.000		0.000			0.000
SUM						
S1	0.000		0.000			0.000
S2	0.000		0.000			0.000
S3	0.000		0.000			0.000
S4	0.000		0.000			0.000
S5	0.000		0.000			0.000
S6	0.000		0.000			0.000
S7	0.000		0.000			0.000
S8	0.000		0.000			0.000



Company

OCCIDENTAL PETROLEUM CORP.

Well

WELD 21-2

Field

WATTENBERG

County

WELD

State

COLORADO