

Company	OCCIDENTAL PETROLUM INC.	
Well	ENDSLEY 32-1-J5	
Field	WATTENBERG	
County	WELD	
State	COLORADO	
Company	OCCIDENTAL PETROLUM INC.	
Well	ENDSLEY 32-1-J5	
Field	WATTENBERG	
County	WELD	
State	COLORADO	
Location:	API # : 05-123-17932	Other Services NONE
Permanent Datum	SEC 32 TWP 3N RGE 65W	Elevation K.B. 4898' D.F. G.L. 4887'
Log Measured From	GROUND LEVEL Elevation 4887'	
Drilling Measured From	KELLY BUSHING (11' A.G.L.) KELLY BUSHING	

Date	27 JULY, 2022	
Run Number	ONE	
Depth Driller	7340'	
Depth Logger	2150'	
Bottom Logged Interval	2147'	
Top Log Interval	SURFACE	
Casing Size	3.5"	
Type Fluid	WATER	
Max. Recorded Temp.	N/A	
Estimated Cement Top	N/A	
Time Well Ready	8:00AM	
Time Logger on Bottom	9:18A.M.	
Unit Number	200128	
Tool Size/ID Number	1 11/16" RADIAL	
Location	STERLING, CO	
Recorded By	ADAM GARDNER	
Witnessed By	SOCCORO OLIVAS	

Run Number	Borehole Record		Tubing Record	
	Bit	From	To	Weight
				From
				To

Casing Record	Surface String	Prot. String	Production String	Liner	Size	Wgt/Ft	Top		Bottom
							Top	Bottom	
					3.5"	7.7#	SURFACE		7340'

<<< Fold Here >>>

All interpretations are opinions based on inferences from electrical or other measurements and we cannot and do not guarantee the accuracy or correctness of any interpretation, and we shall not, except in the case of gross or willful negligence on our part, be liable or responsible for any loss, costs, damages, or expenses incurred or sustained by anyone resulting from any interpretation made by any of our officers, agents or employees. These interpretations are also subject to our general terms and conditions set out in our current Price Schedule.

Comments

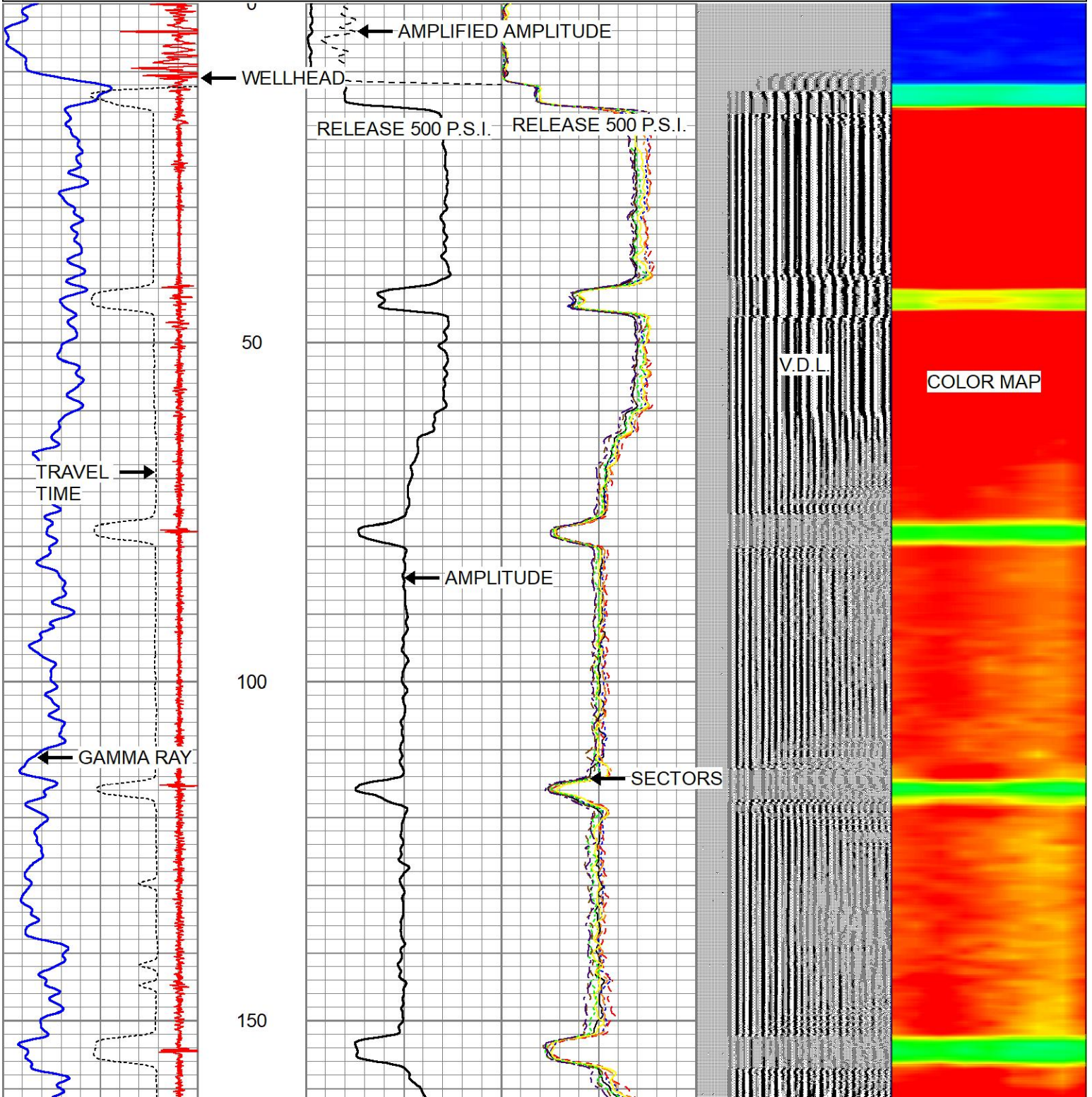
**LOG CORRELATED TO PIONEER WIRELINE LOG RAN 3-5-15 .
LOG RAN WITH (500 P.S.I.)
RELEASED PRESSURE WHILE LOGGING TOOL WAS 23' FROM SURFACE.**

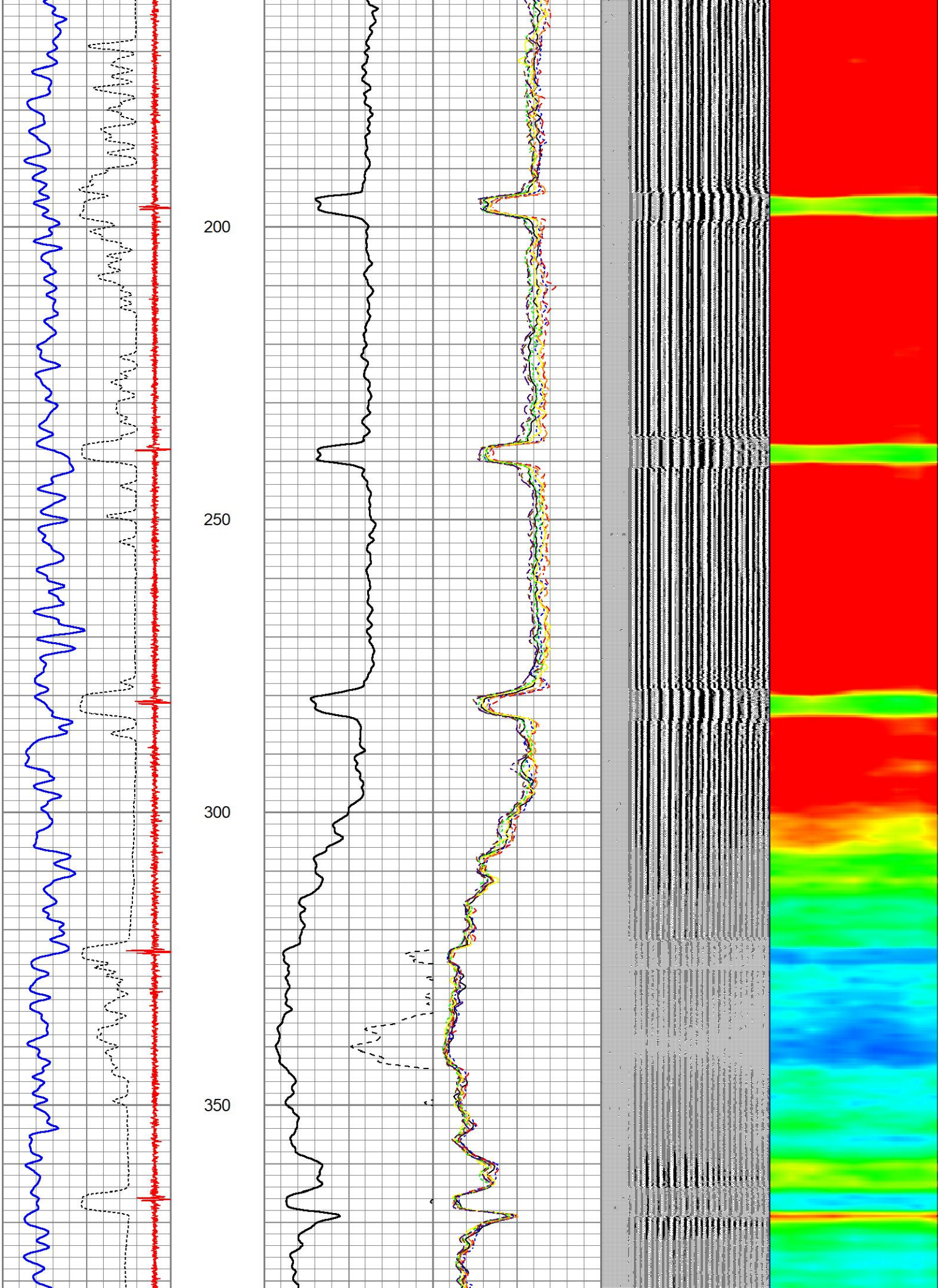
Database File endsley 32-1-j5.db
 Dataset Pathname pass17
 Presentation Format zwag
 Dataset Creation Wed Jul 27 09:15:55 2022
 Charted by Depth in Feet scaled 1:240

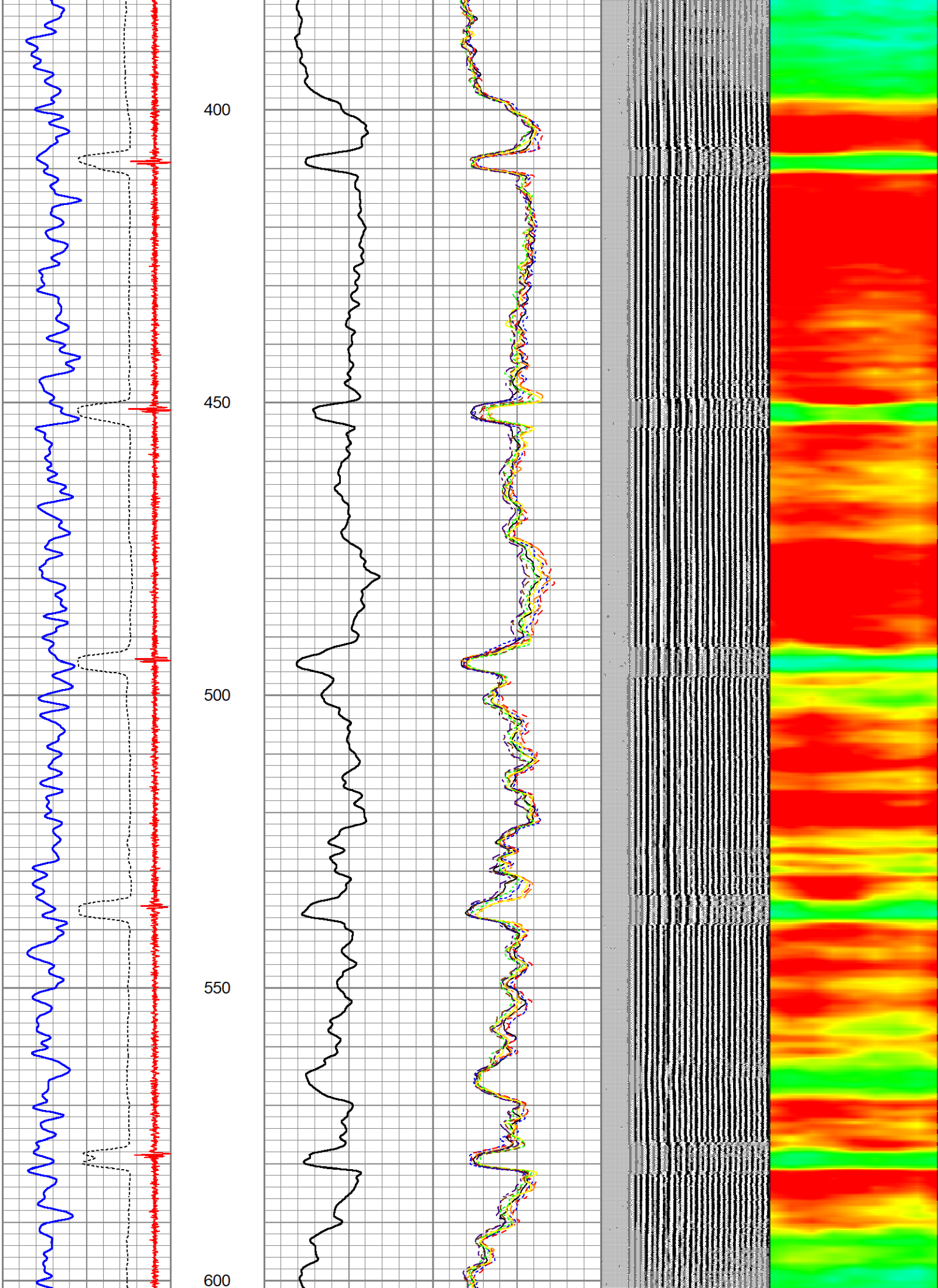
10	CCL	-1.1
0	GR (GAPI)	150
200	TT3 (usec)	306

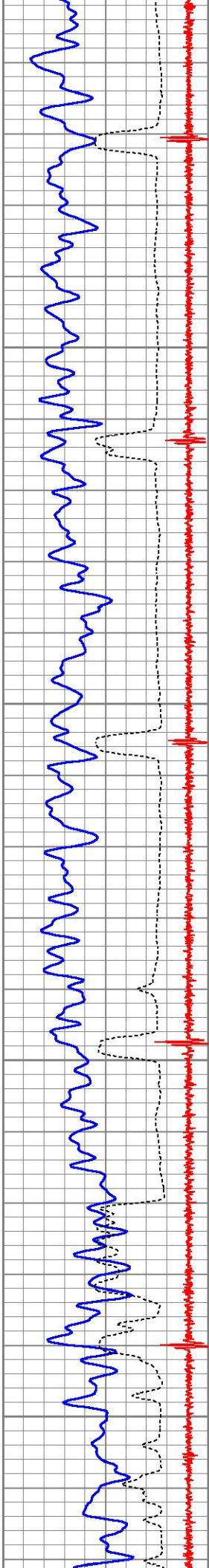
0	AMP (mV)	150	0	AMPS1	150
	AMPLIFIED AMP3		0	AMPS2	150
0	(mV)	20	0	AMPS3	150
			0	AMPS4	150
			0	AMPS5	150
			0	AMPS6	150
			0	AMPS7	150
			0	AMPS8	150

200	VDL (usec)	1200	1	RADIAL MAP	8
-----	------------	------	---	------------	---







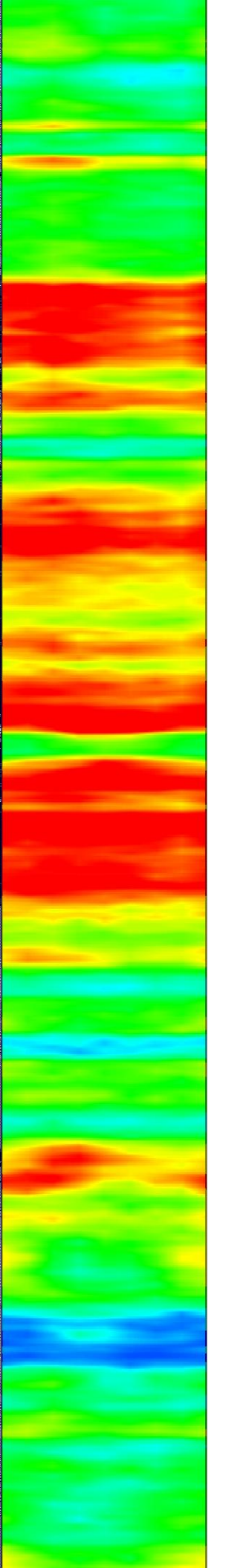
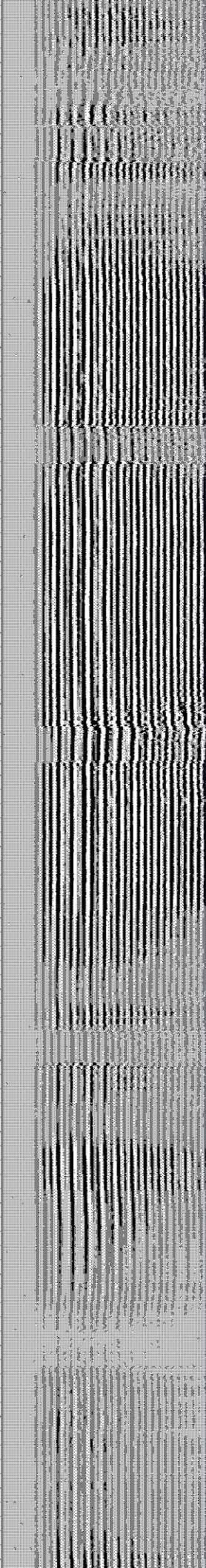
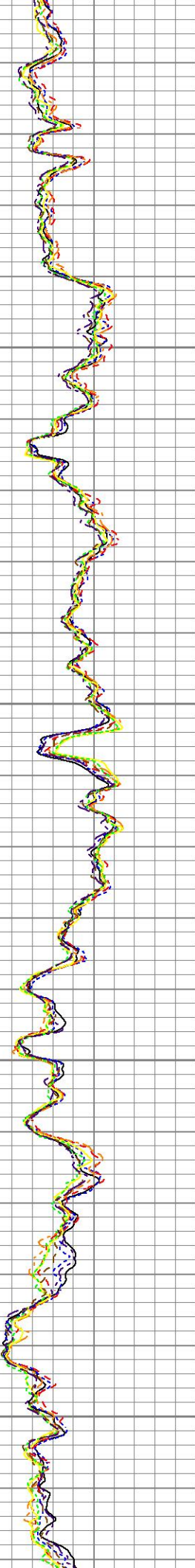
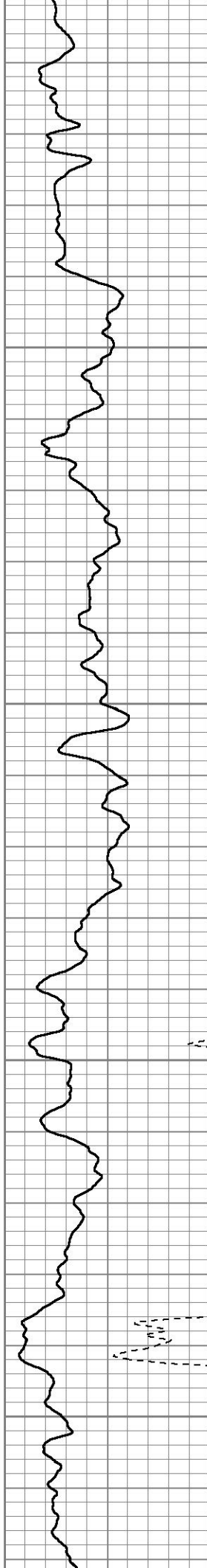


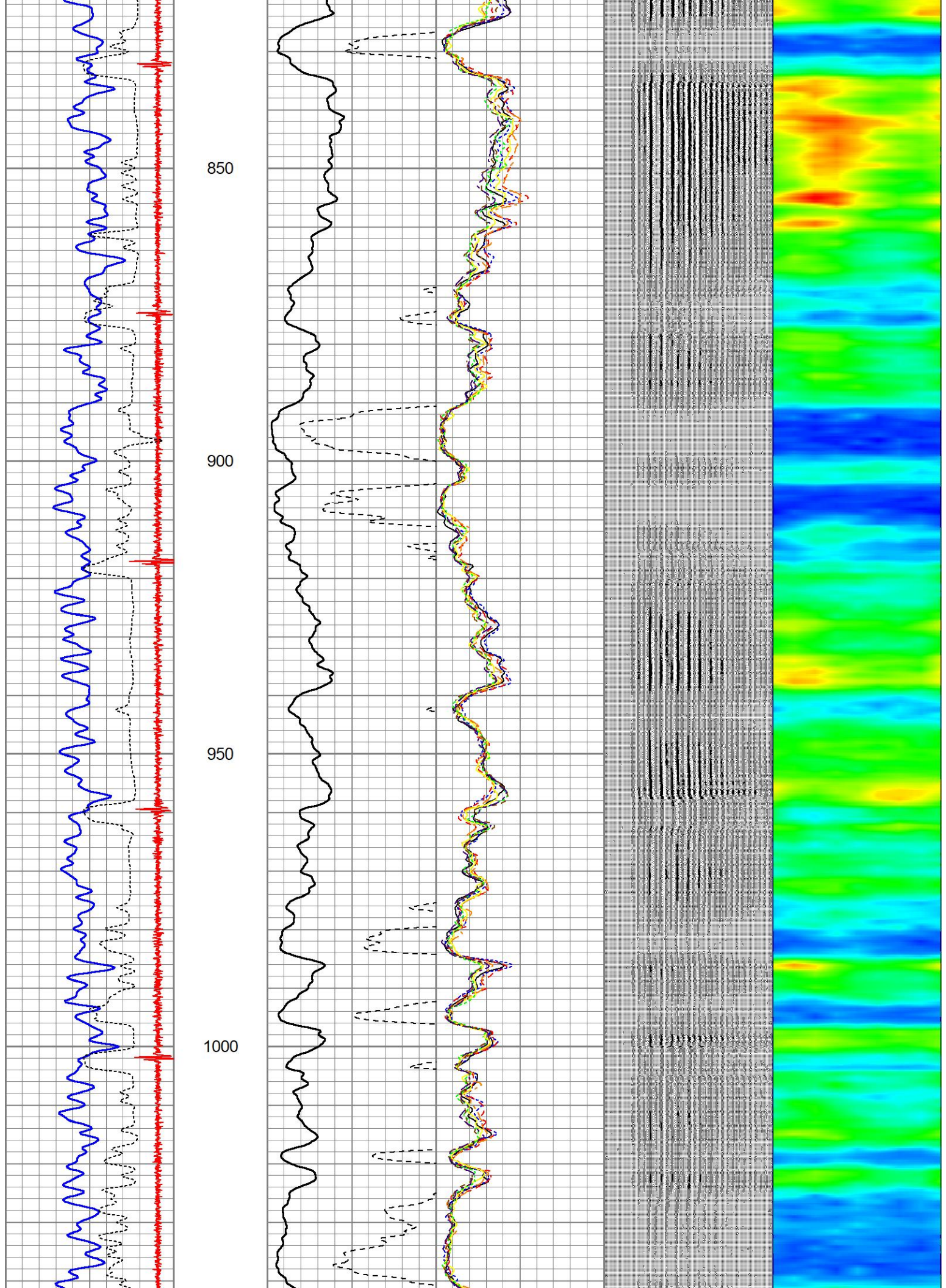
650

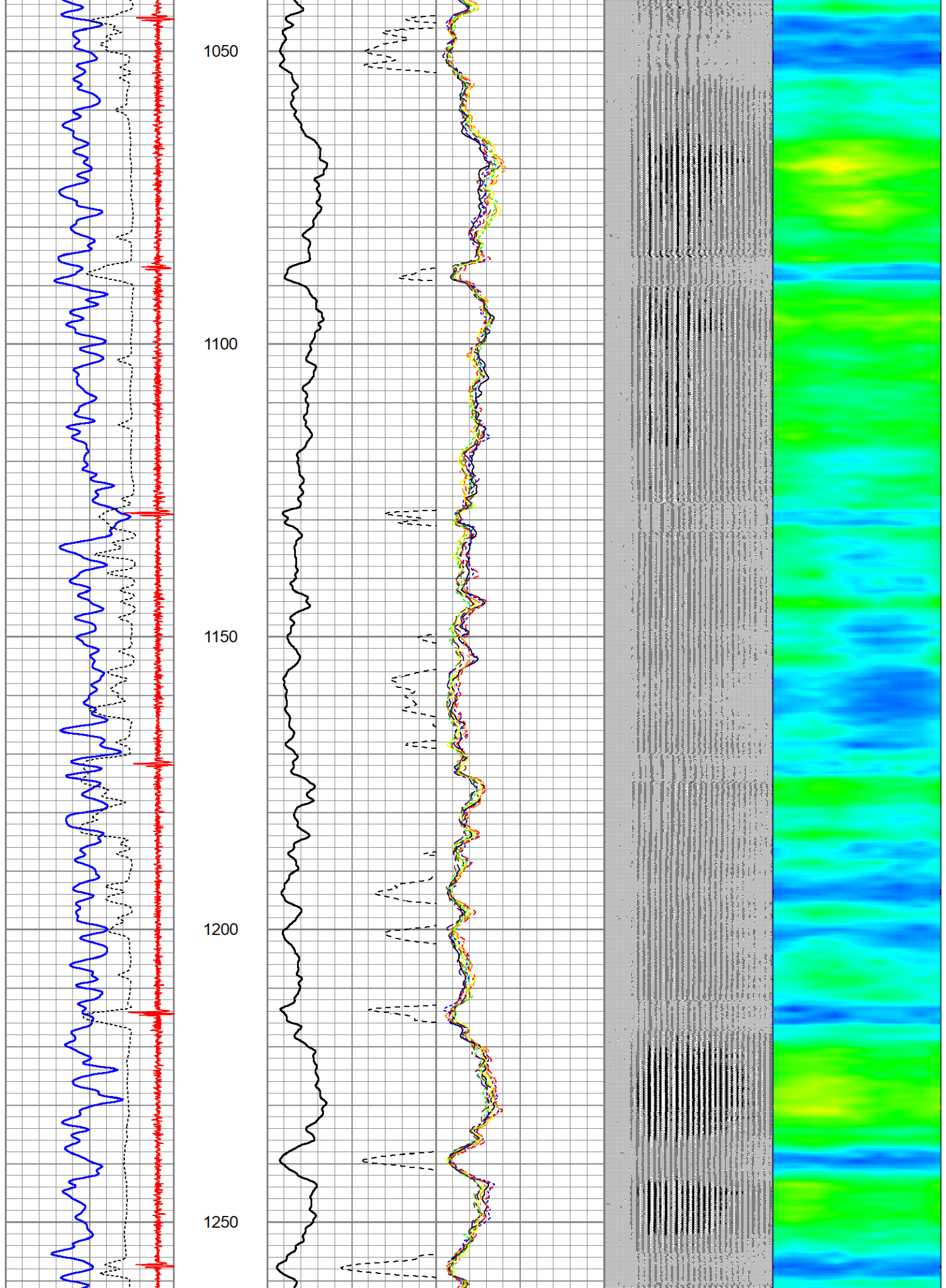
700

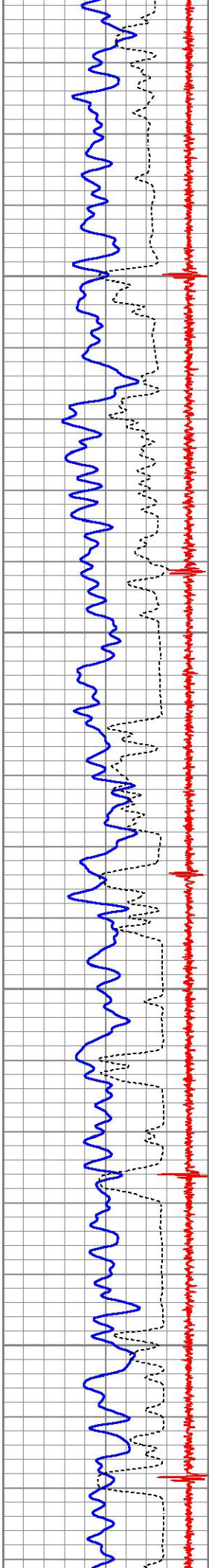
750

800







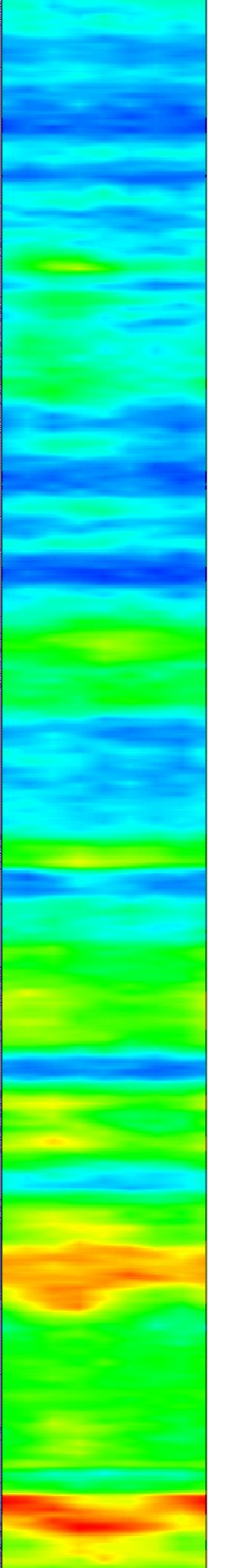
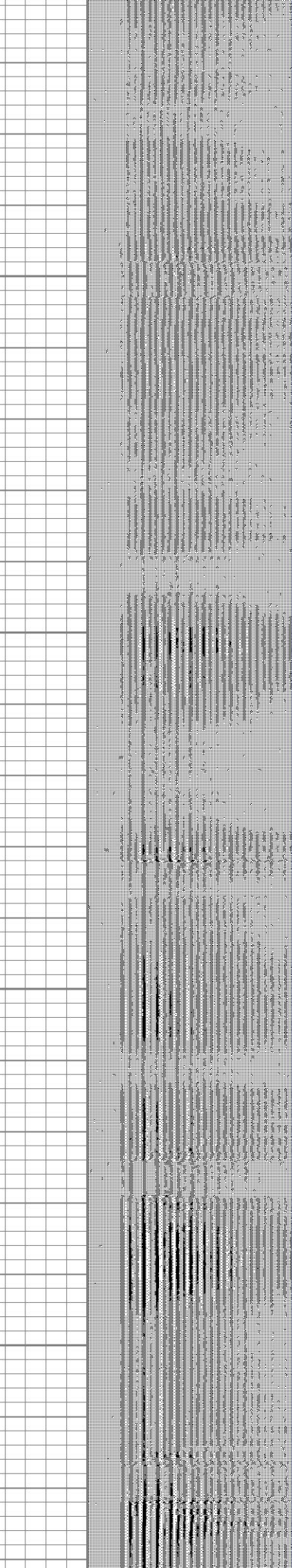
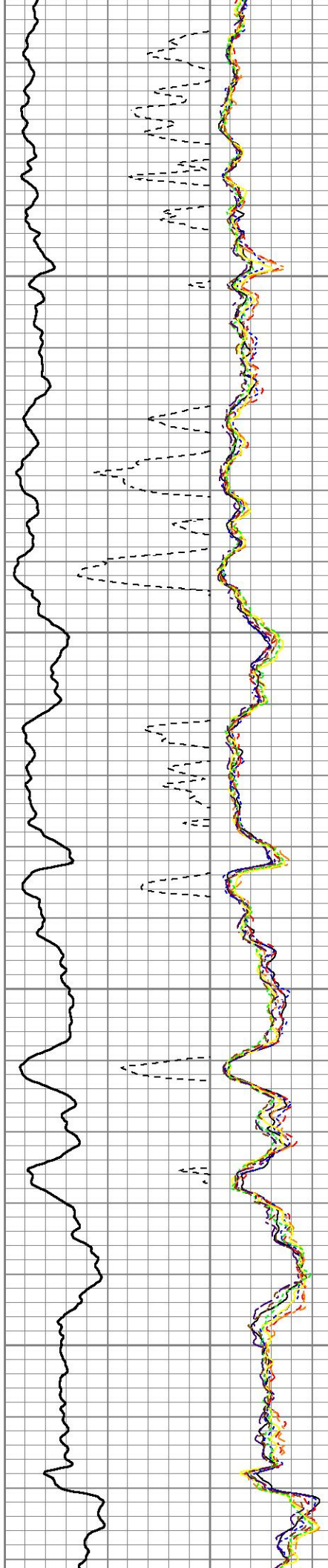


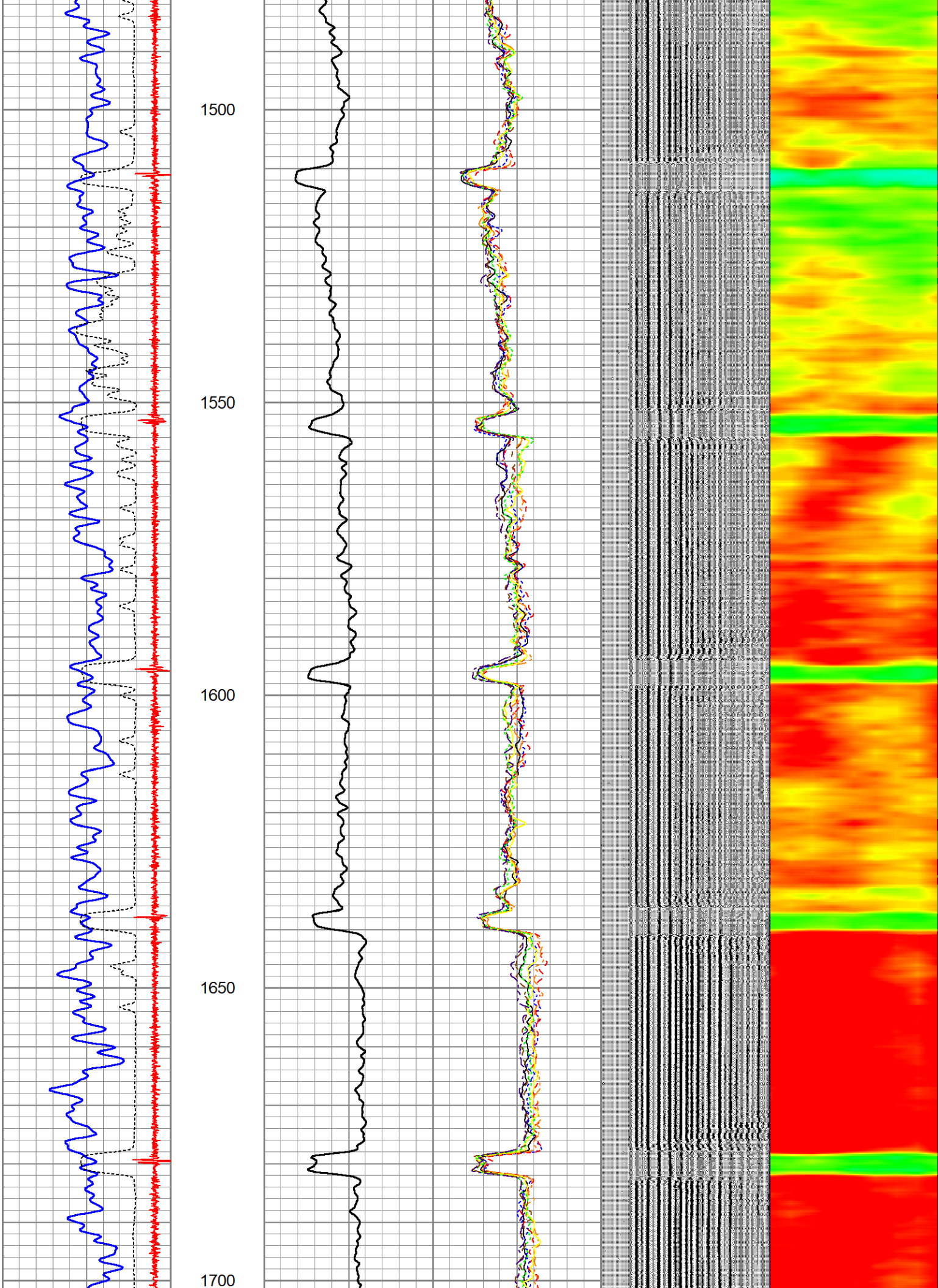
1300

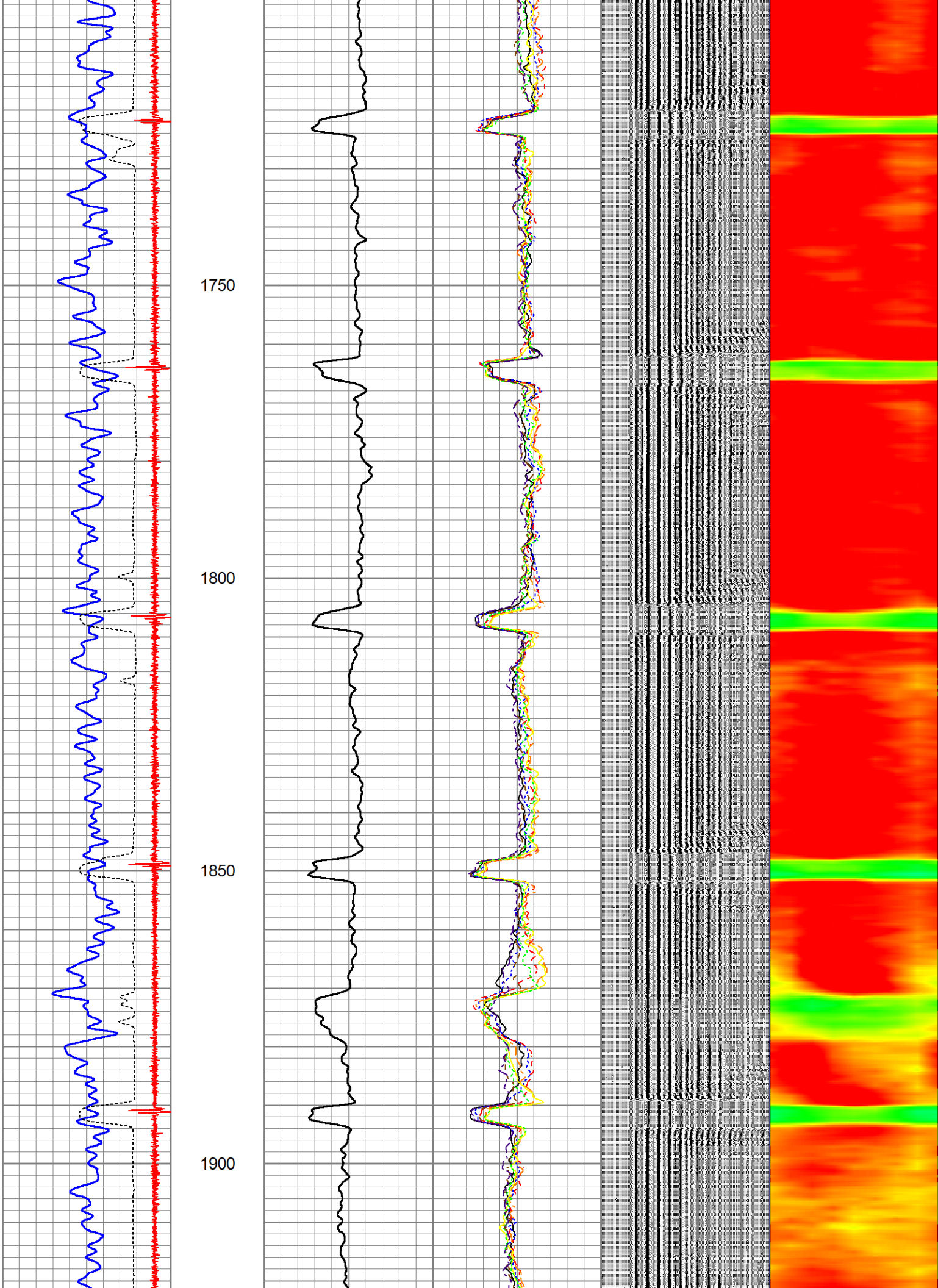
1350

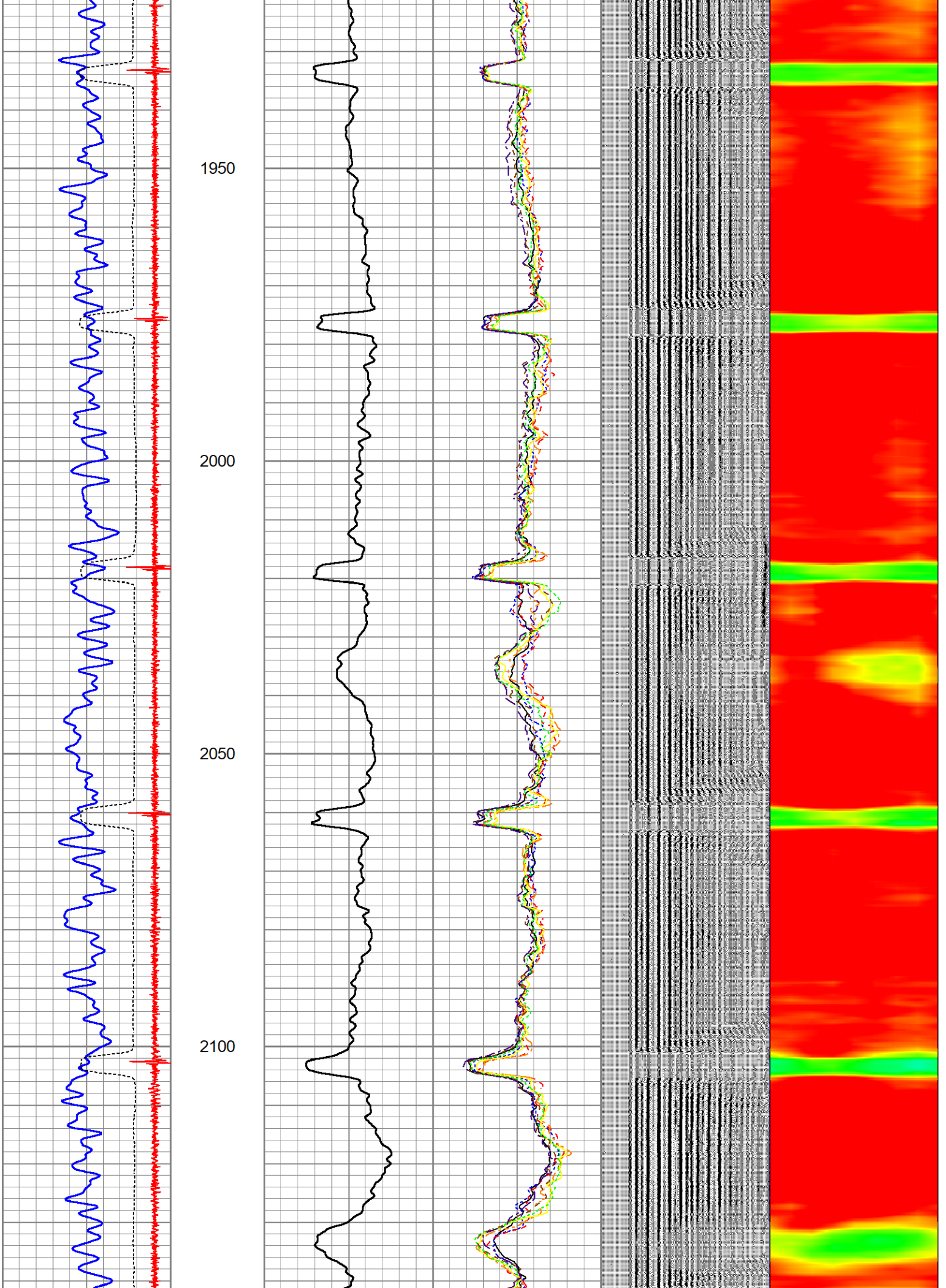
1400

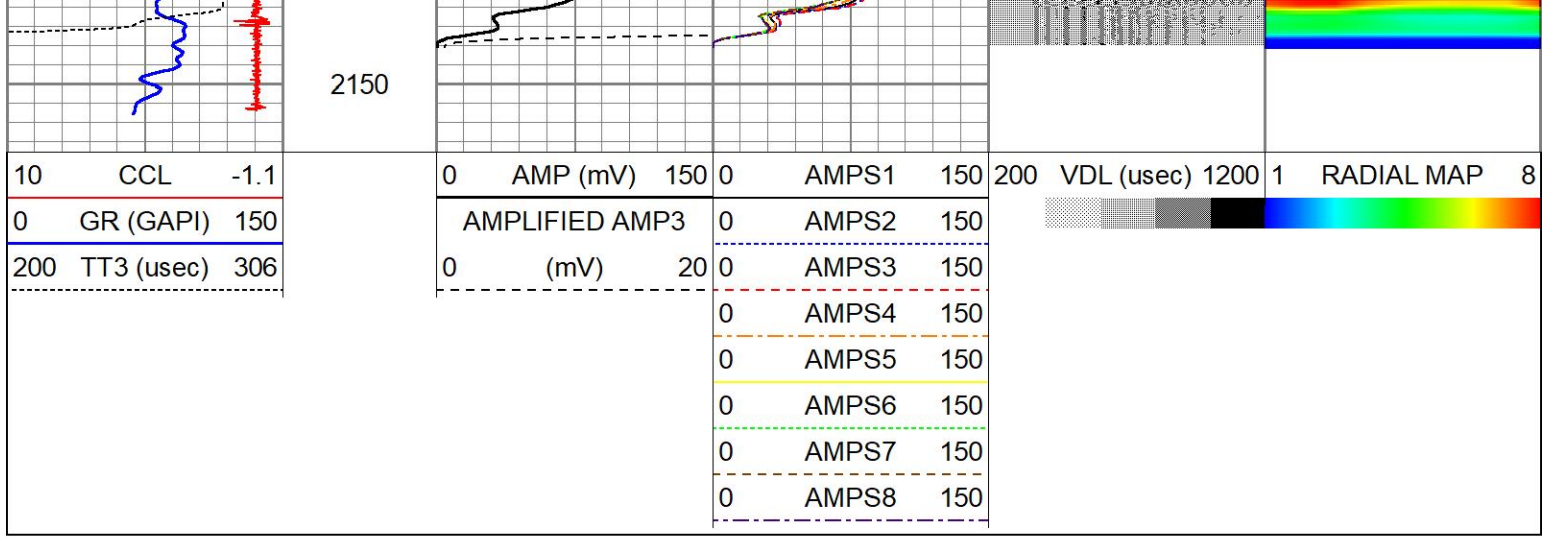
1450











Calibration Report

Database File endsley 32-1-j5.db
 Dataset Pathname pass17
 Dataset Creation Wed Jul 27 09:15:55 2022

Gamma Ray Calibration Report

Type / Serial: Probe275dig / 101010

SHOP CALIBRATION

Wed Jul 27 08:58:57 2022

	Counts/Sec.	Gain	Offset	Jig	Units
Background	0.0				cps
Calibrator	1.0				cps
		0.8000			GAPI/cps

PRIMARY VERIFICATION

Background	0.0				cps
Calibrator	0.0				cps
Difference				0.0	GAPI

BEFORE SURVEY VERIFICATION

Background	0.0				cps
Calibrator	0.0				cps
Difference				0.0	GAPI

AFTER SURVEY VERIFICATION

Background	0.0				cps
Calibrator	0.0				cps
Difference				0.0	GAPI

Segmented Cement Bond Log Calibration Report

Serial Number: 101020
 Tool Model: Probe
 Calibration Casing Diameter: 3.500 in
 Calibration Depth: 216.325 ft

Master Calibration, performed Wed Jul 27 08:53:51 2022:

Raw (v)		Calibrated (mv)		Results	
Zero	Cal	Zero	Cal	Gain	Offset

3'	0.003	0.609	1.000	94.517	154.202	0.552
CAL	0.003	0.978				
5'	0.003	0.646	1.000	94.517	145.324	0.617
SUM						
S1	0.003	0.582	0.000	94.500	163.136	-0.480
S2	0.003	0.606	0.000	94.500	156.795	-0.444
S3	0.003	0.558	0.000	94.500	170.074	-0.467
S4	0.003	0.566	0.000	94.500	167.836	-0.492
S5	0.003	0.525	0.000	94.500	181.044	-0.480
S6	0.003	0.587	0.000	94.500	161.772	-0.454
S7	0.003	0.711	0.000	94.500	133.400	-0.344
S8	0.003	0.651	0.000	94.500	145.683	-0.395

Internal Reference Calibration, performed Tue Feb 12 12:45:01 2013:

	Raw (v)		Calibrated (v)		Results	
	Zero	Cal	Zero	Cal	Gain	Offset
CAL	0.000	0.000	0.003	0.978	1.000	0.000

Air Zero Calibration, performed Thu Feb 21 13:40:31 2013:

	Raw (v)		Calibrated (v)		Results	
	Zero		Zero		Offset	
3'	0.000		0.000		0.000	
5'	0.000		0.000		0.000	
SUM						
S1	0.000		0.000		0.000	
S2	0.000		0.000		0.000	
S3	0.000		0.000		0.000	
S4	0.000		0.000		0.000	
S5	0.000		0.000		0.000	
S6	0.000		0.000		0.000	
S7	0.000		0.000		0.000	
S8	0.000		0.000		0.000	

Log Variables

DatabaseC:\ProgramData\Warrior\Data\lendsley 32-1-j5.db
Dataset field/well/run1/pass17/_vars_

Top - Bottom

BOREID in 7.875	BOTTEMP degF 100	CASEOD in 3.5	CASETHCK in 0	CASEWGHT lb/ft 7.7	MAXAMPL mV 94.5	MINAMPL mV 0	MINATTN db/ft 0.8
PERFS No	PPT usec 356	SRFTEMP degF 70	TDEPTH ft 0				

Variable Description

BOREID : Borehole I.D.

BOTTEMP : Bottom Hole Temperature

CASEOD : Casing O.D.

CASETHCK : Casing Thickness

CASEWGHT : Casing Weight

MAXAMPL : Maximum Amplitude

MINAMPL : Minimum Amplitude

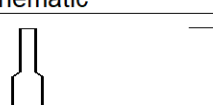
MINATTN : Minimum Attenuation

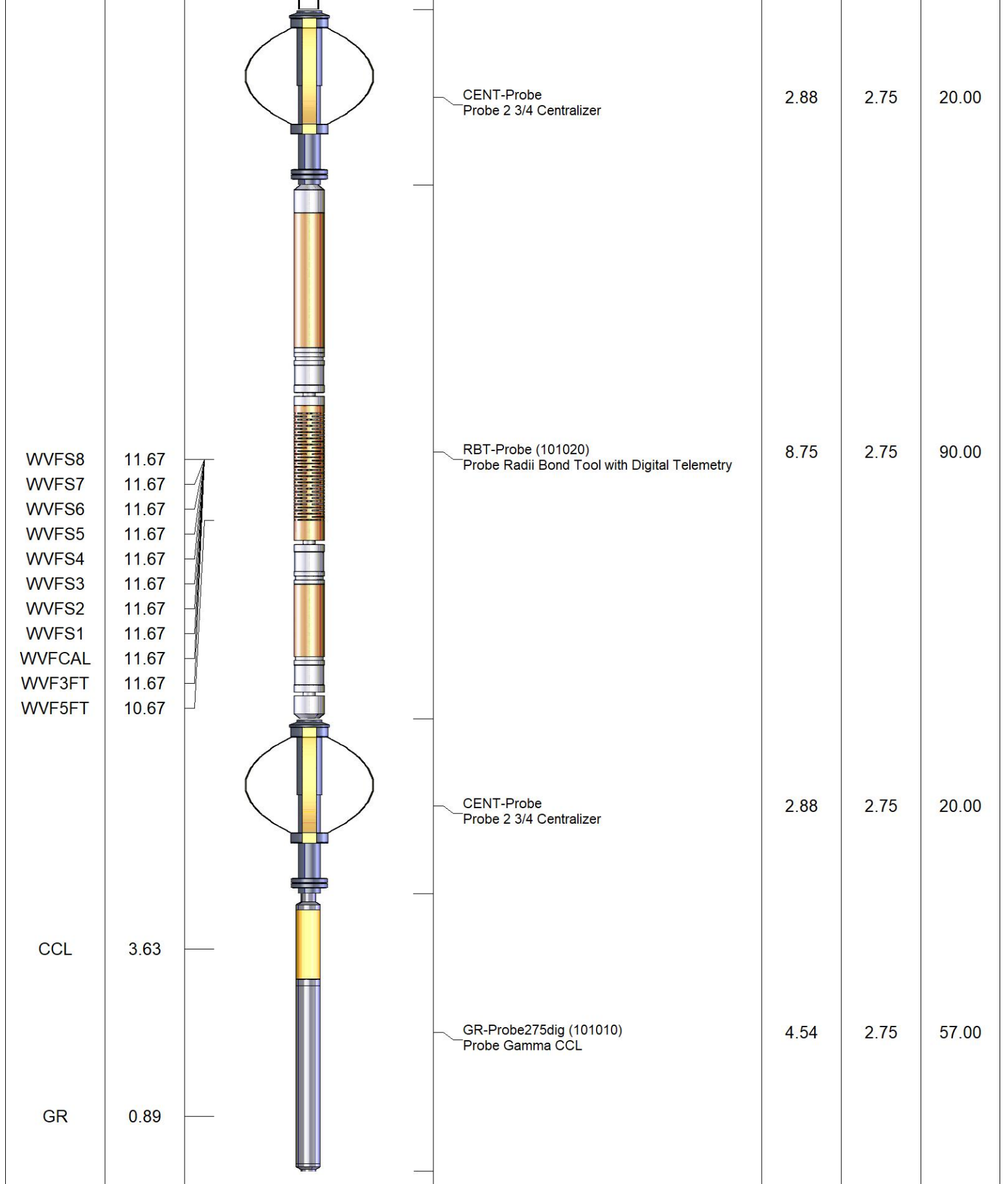
PERFS : Perforation Flag

PPT : Predicted Pipe Time

SRFTEMP : Surface Temperature

TDEPTH : Total Depth

Sensor	Offset (ft)	Schematic	Description	Length (ft)	O.D. (in)	Weight (lb)
			CHD-STNDRD Standard Cable Head	1.00	1.69	10.00



Dataset: endsley 32-1-j5.db: field/well/run1/pass17
 Total length: 20.04 ft
 Total weight: 197.00 lb
 O.D.: 2.75 in