

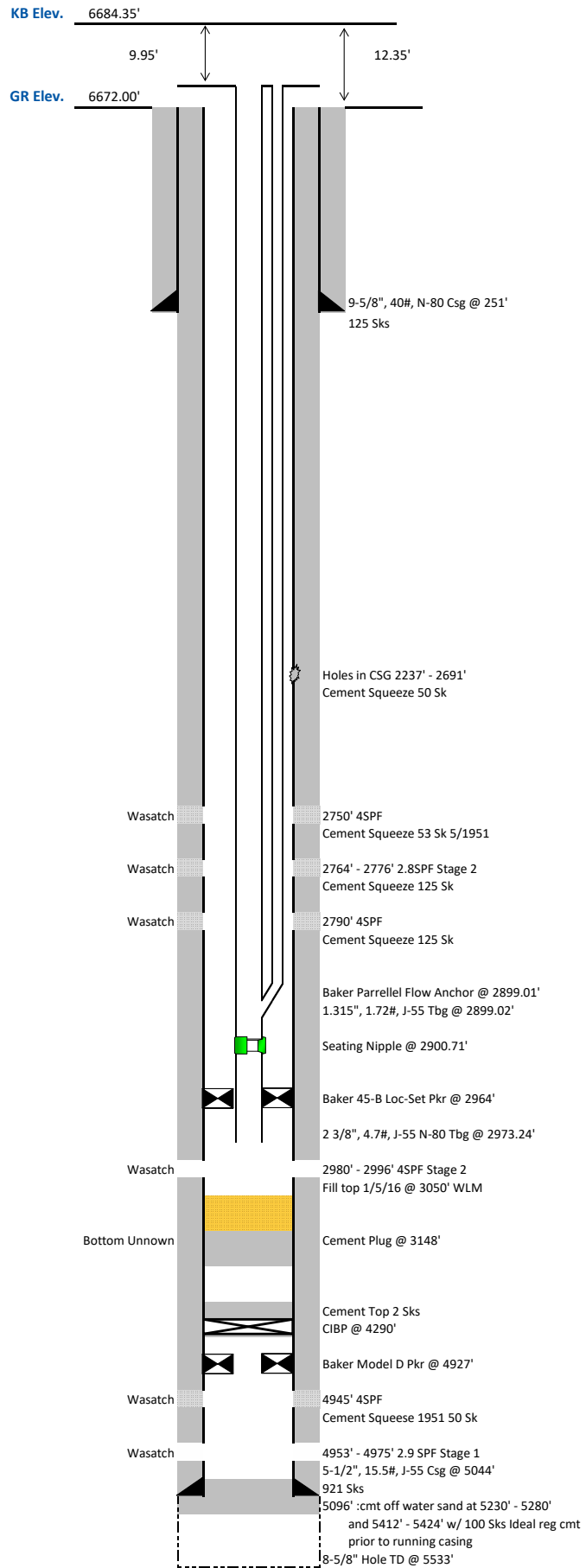
Wellbore Diagram

Well Name:	BW Musser 6
County, State	Moffat, CO
Legal Description:	SE NE 4-11N-97W
API:	05-081-05447
SHL:	2378' FNL, 333' FEL
Updated By:	Jeff Bluemel
Date Updated:	4/13/2022
Spud Date:	4/22/1951
TD Date:	5/26/1951
IP Date:	5/30/1951
Well TD:	5,533
Orientation:	Vertical
Fill Top MD:	3,050
Plug Back MD:	3,148
Bridge Plug MD:	4,290
Producing Frac Jobs:	1

Latitude	40.943064
Longitude	-108.288233

As Of Wireline	1/5/2016
----------------	----------

All measurements are in KB
unless otherwise specified.



Tubing Report

Well Name:	BW Musser 6	Date Landed:	7/3/2003
KB (above ground):	12.35	KB (above Tbg Spool):	9.95

Quantity	Description	O.D. (In.)	I.D. (In.)	Length (Ft.)	Top (Ft.)	Depth (Ft.)
	Tbg Spool Top (depth)			9.95		9.95
1	Wood Group Dual Tbg Hanger			0.85	9.95	10.80
93 Jts	2 3/8" 4.7# J-55 8rd eue Tbg			2,888.21	10.80	2,899.01
1	Baker Parallel Flow Anchor			1.70	2,899.01	2,900.71
1	2 3/8" eue Seating Nipple w/ Coupling			0.72	2,900.71	2,901.43
2 Jts	2 3/8" 4.7# J-55 8rd eue Tbg			62.61	2,901.43	2,964.04
1	Baker 45B Loc-Set Pkr			3.50	2,964.04	2,967.54
1	2 3/8" 4.7# N-80 Pup Mule Shoe Btm			5.70	2,967.54	2,973.24

[illegible]

Notes:

The above 2 3/8" String is landed in 4000# in tension, and the 1" string is stung into the parallel flow tube and landed 3000# in compression.

Signed:	<i>Michael R. Sliger</i>	Date Signed:	7/3/2003
----------------	--------------------------	---------------------	----------