



**CEMENT BOND
CASING COLLAR
GAMMA LOG**

Company OXY
Well Varra 10-2
Field Wattenberg
County Weld State CO

Location: API #: 05-123-30097
SE/SE
Other Services: NONE

Permanent Datum: SEC 2 TWP 2N RGE 68W
Elevation: 4846'

Log Measured From: KB-17' Elevation: 4863'
D.F.: ---
Drilling Measured From: NA G.L.: 4846'

Date	03-Jun-2022
Run Number	One
Depth Driller	8214 FT
Depth Logger	1321 FT
Bottom Logged Interval	1313 FT
Top Log Interval	SURFACE
Open Hole Size	---
Type Fluid	WATER
Density / Viscosity	---
Max. Recorded Temp.	81
Estimated Cement Top	SEE LOG
Time Well Ready	ROA
Time Logger on Bottom	10:29
Equipment Number	72
Location	PLATTEVILLE
Recorded By	M. Steinman
Witnessed By	Socorro Olivas

Borehole Record				Tubing Record			
Run Number	Bit	From	To	Size	Weight	From	To
Casing Record	Size	Mgt/ft	Top	Bottom			
Surface String	8.63	---	SURFACE	730 FT			
Prot. String							
Production String	4.5	11.6	SURFACE	8196 FT			
Liner							

<<< Fold Here >>>

All interpretations are opinions based on inferences from electrical or other measurements and we cannot and do not guarantee the accuracy or correctness of any interpretation, and we shall not, except in the case of gross or willful negligence on our part, be liable or responsible for any loss, costs, damages, or expenses incurred or sustained by anyone resulting from any interpretation made by any of our officers, agents or employees. These interpretations are also subject to our general terms and conditions set out in our current Price Schedule.

Comments

LOG MEASURED FROM KB @ 17 FT
LOG RAN UNDER 0 PSI

THANK YOU FOR USING KLX ENERGY SERVICES

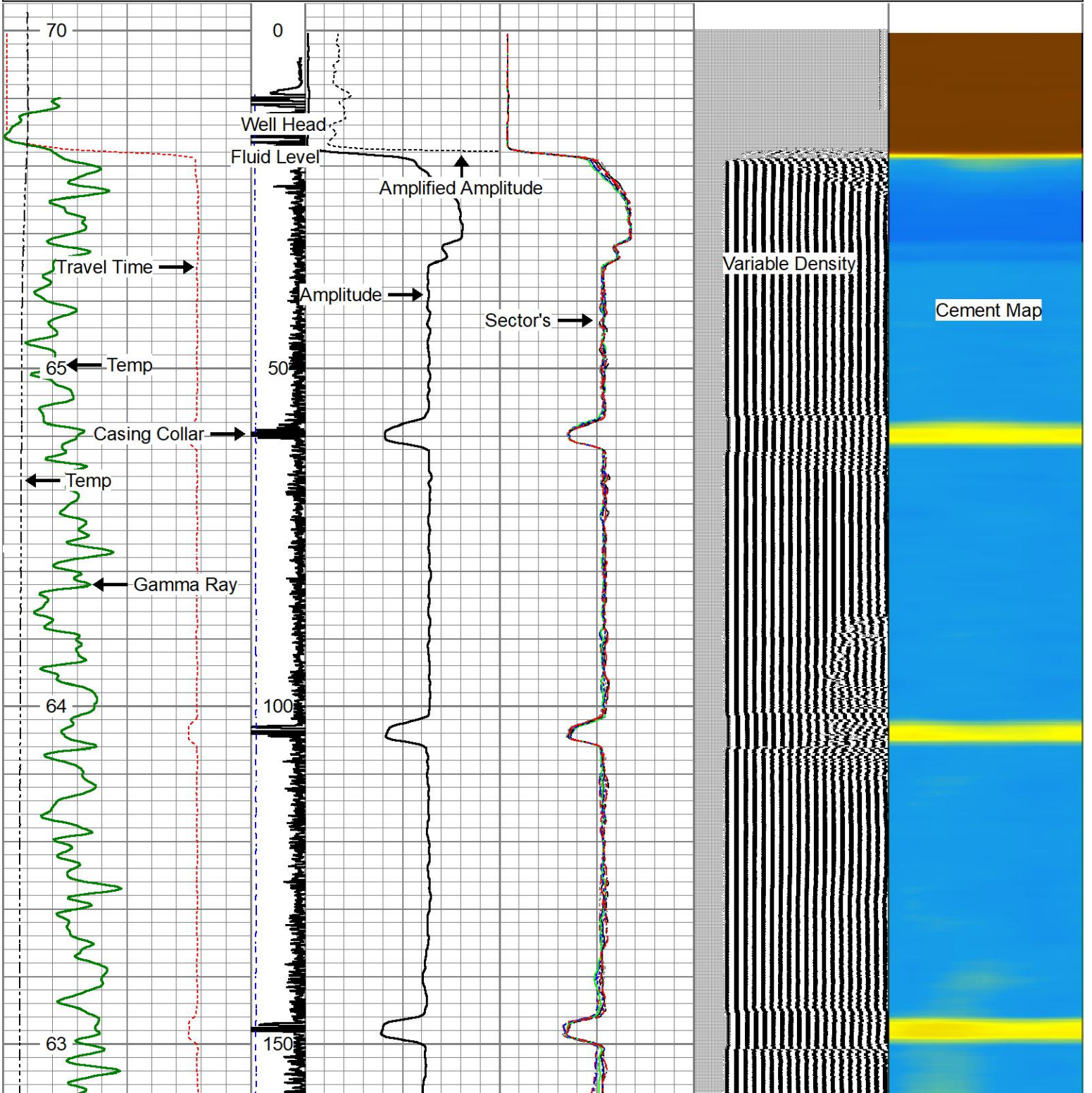


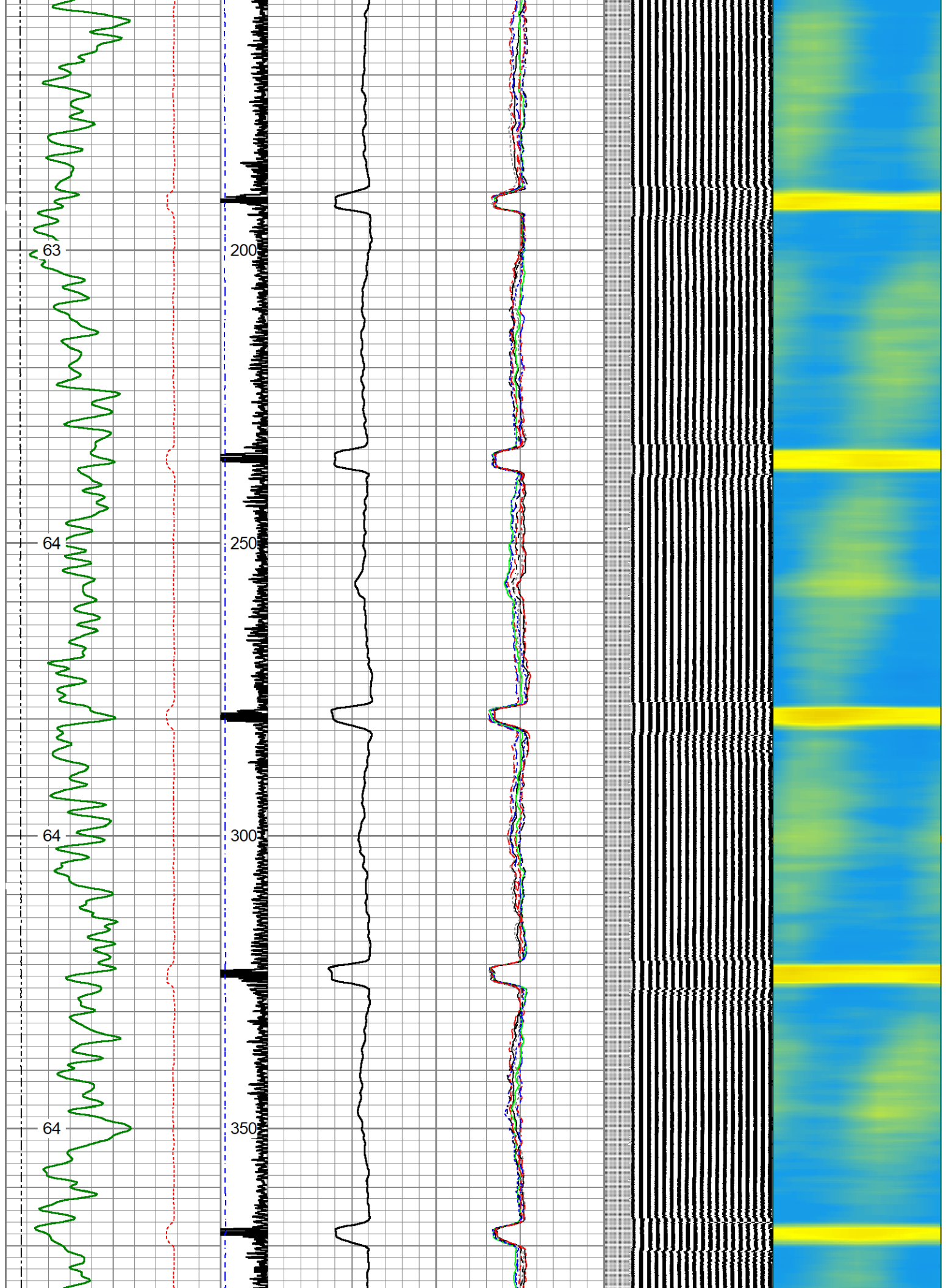
Main Pass

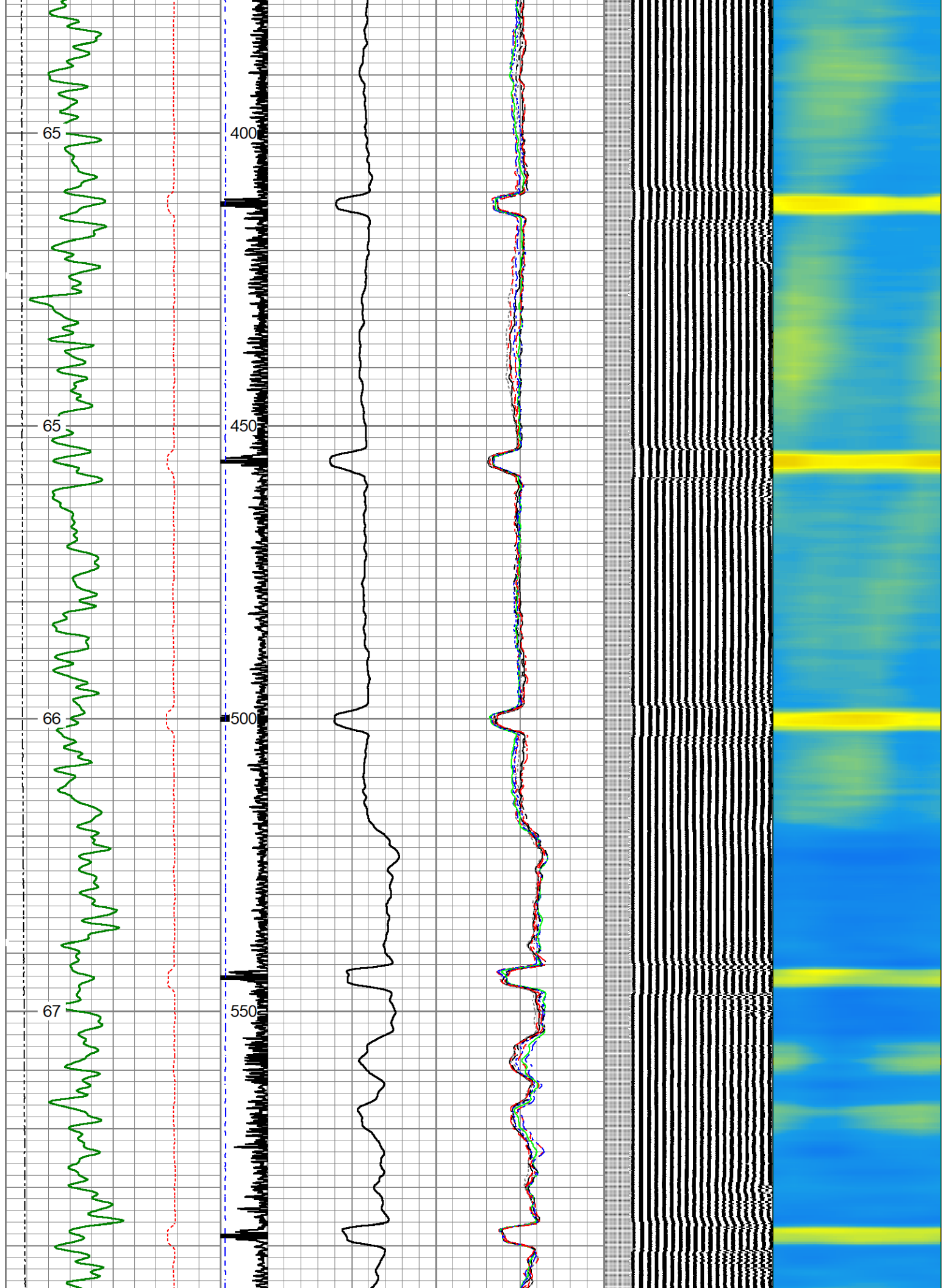
Recorded With -0- PSI Surface Induced Pressure

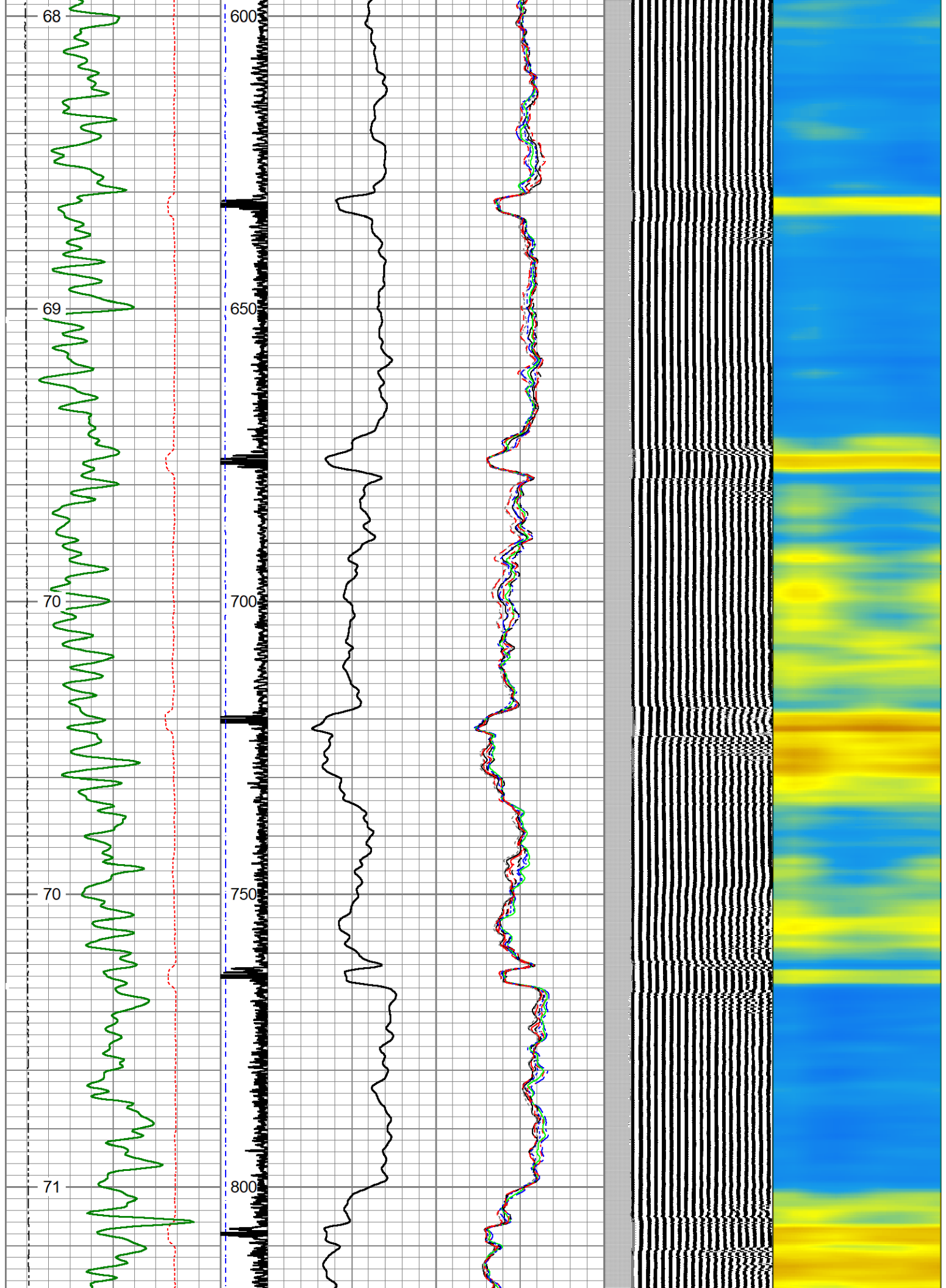
Database File oxy_varra_10-2_rcbl_03-jun-2022.db
 Dataset Pathname main/pass1.1
 Presentation Format rcbl_hh
 Dataset Creation Fri Jun 03 10:39:57 2022
 Charted by Depth in Feet scaled 1:240

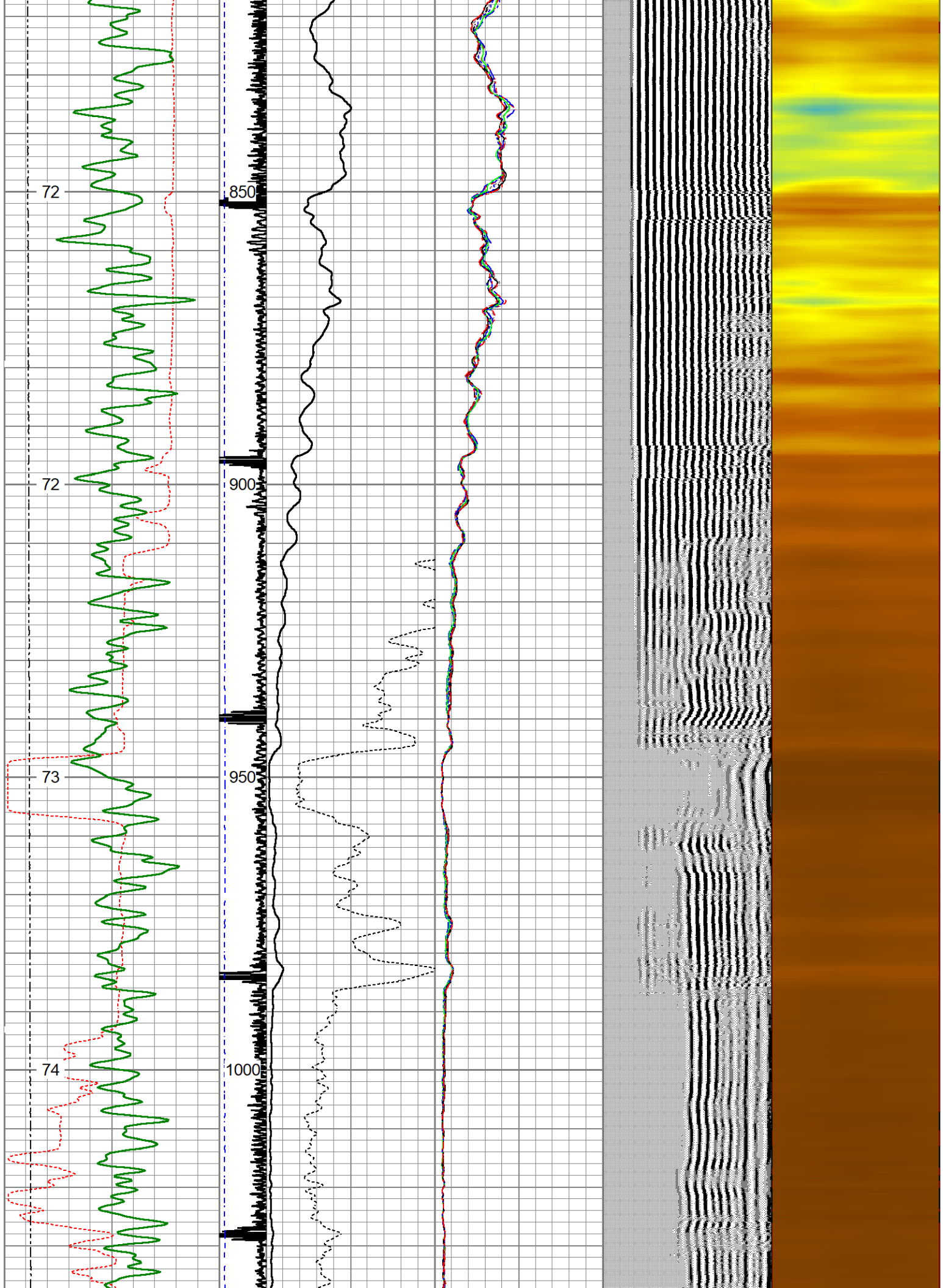
400	Travel Time (usec)	200	ing Co	0	Amplitude (mV)	100	-5	Sector 1	150	Variable Density	1	Cement Map	8
0	Gamma Ray (GAPI)	150	9	-1	Amplified Amplitude		-5	Sector 2	150	(usec)	1200		
50	TEMP (degF)	250	e Tens	0	(mV)	10	-5	Sector 3	150				
	TEMP (degF)		(lb)				-5	Sector 4	150				
			(2000)				-5	Sector 5	150				
							-5	Sector 6	150				
							-5	Sector 7	150				
							-5	Sector 8	150				

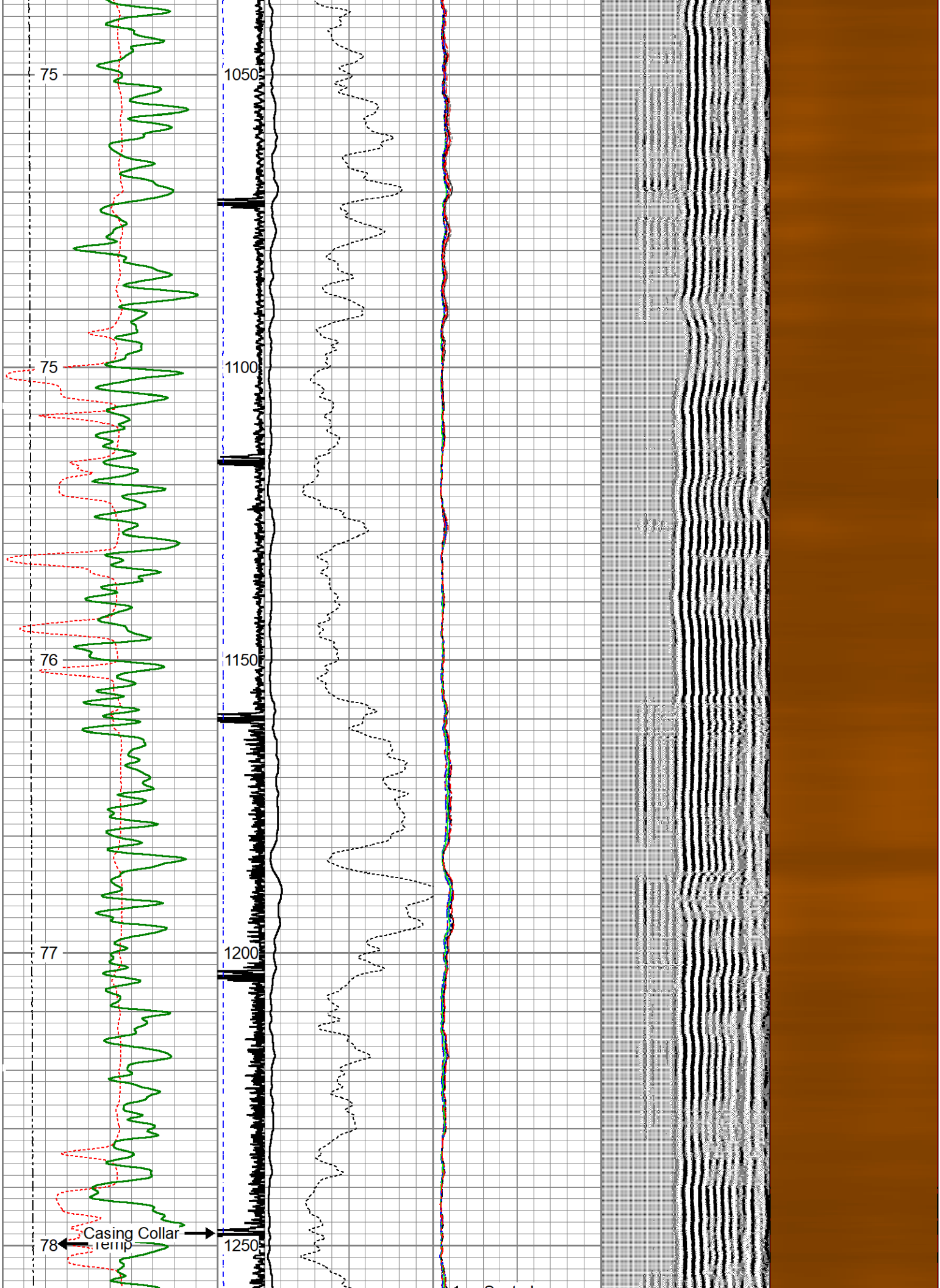


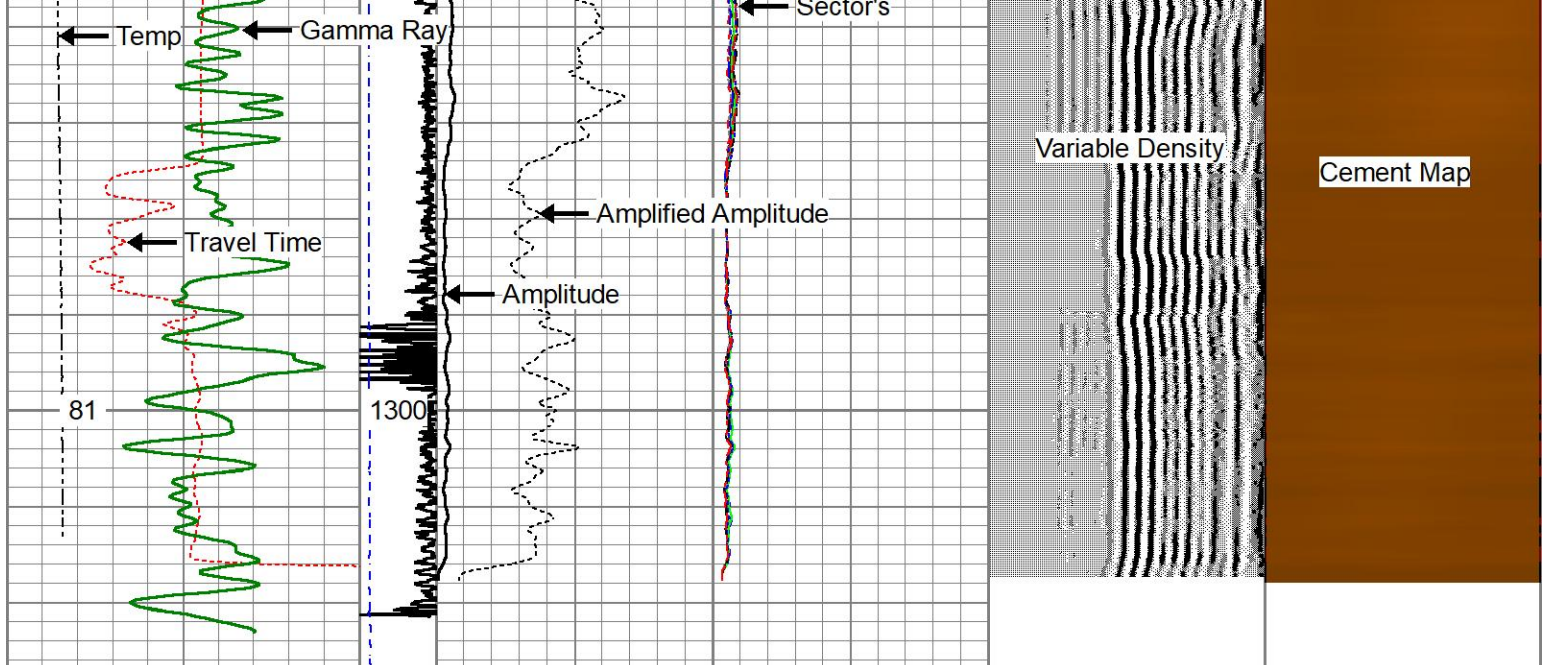












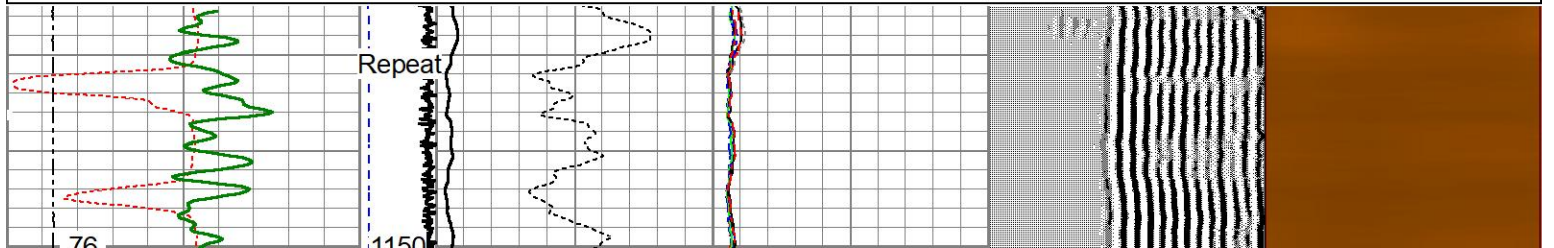
400	Travel Time (usec)	200	ing Co	0	Amplitude (mV)	100	-5	Sector 1	150	Variable Density	1	Cement Map	8
0	Gamma Ray (GAPI)	150	9 -1		Amplified Amplitude		-5	Sector 2	150	200 (usec)	1200		
50	TEMP (degF)	250	e Tens	0	(mV)	10	-5	Sector 3	150				
	TEMP (degF)		(lb)				-5	Sector 4	150				
			(2000)				-5	Sector 5	150				
							-5	Sector 6	150				
							-5	Sector 7	150				
							-5	Sector 8	150				

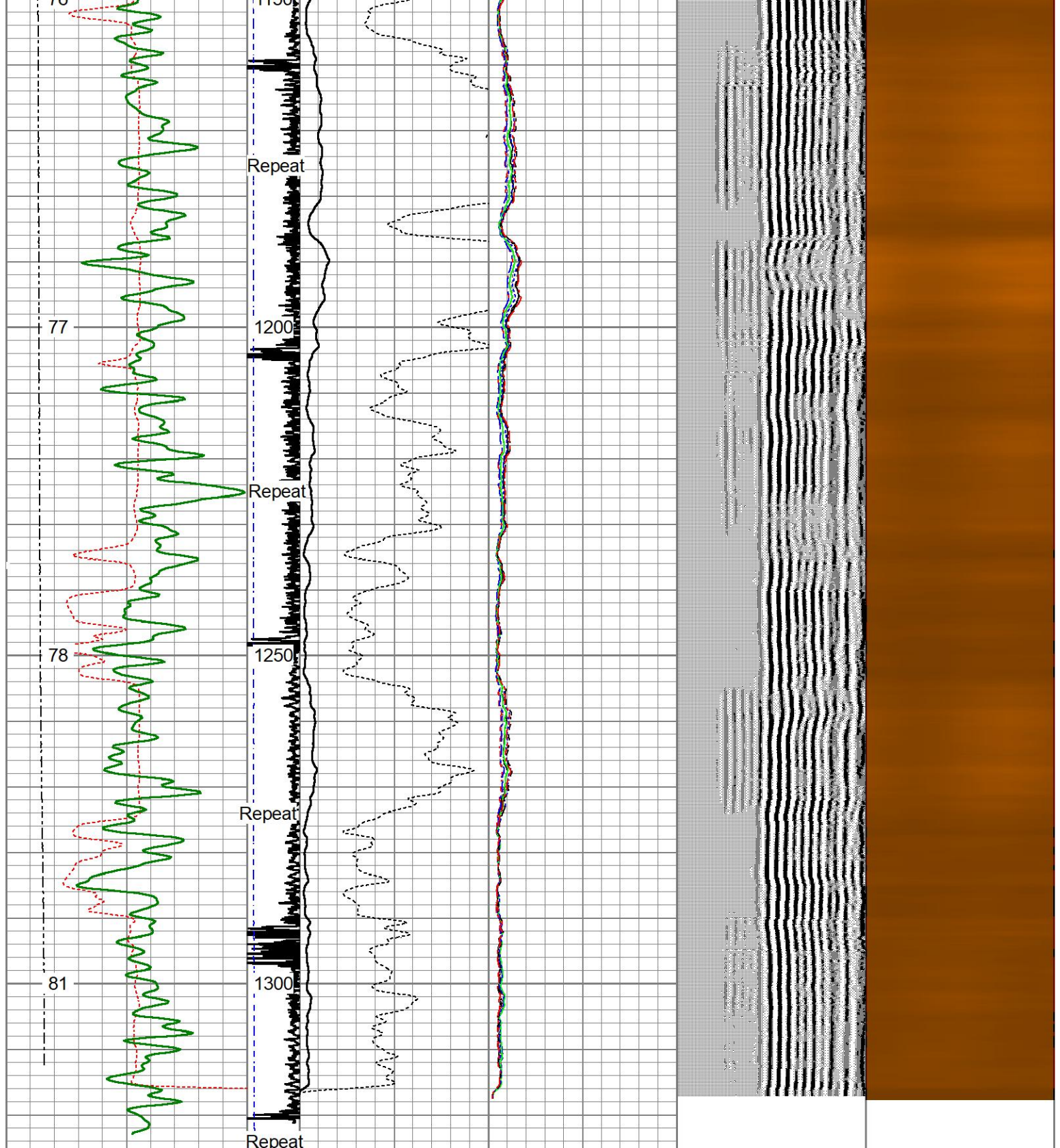
KLX Energy Services **Repeat Pass**

Recorded With -0- PSI Surface Induced Pressure

Database File: oxy_varra_10-2_rcbl_03-jun-2022.db
 Dataset Pathname: pass5
 Presentation Format: rcbl_hh
 Dataset Creation: Fri Jun 03 10:23:01 2022
 Charted by: Depth in Feet scaled 1:240

400	Travel Time (usec)	200	ing Co	0	Amplitude (mV)	100	-5	Sector 1	150	Variable Density	1	Cement Map	8
0	Gamma Ray (GAPI)	150	9 -1		Amplified Amplitude		-5	Sector 2	150	200 (usec)	1200		
50	TEMP (degF)	250	e Tens	0	(mV)	10	-5	Sector 3	150				
	TEMP (degF)		(lb)				-5	Sector 4	150				
			(2000)				-5	Sector 5	150				
							-5	Sector 6	150				
							-5	Sector 7	150				
							-5	Sector 8	150				





400	Travel Time (usec)	200	ing Co	0	Amplitude (mV)	100	-5	Sector 1	150	Variable Density	1	Cement Map	8
0	Gamma Ray (GAPI)	150	9 -1		Amplified Amplitude		-5	Sector 2	150		200		(usec)
50	TEMP (degF)	250	e Tens	0	(mV)	10	-5	Sector 3	150				
	TEMP (degF)		(lb)				-5	Sector 4	150				
			(2000				-5	Sector 5	150				
							-5	Sector 6	150				
							-5	Sector 7	150				
							-5	Sector 8	150				

Sensor	Offset (ft)	Schematic	Description	Length (ft)	O.D. (in)	Weight (lb)	
			CHD-Titan Titan 1 7/16" GO Cablehead	1.00	1.44	5.00	
Temp	12.88						
WVFS8	10.65			RBT-Probe 2.75 Radii W/Temp (FW1311-22) Probe 2.75" Radial with Integral Temperature Sub	9.21	2.75	90.00
WVFS7	10.65						
WVFS6	10.65						
WVFS5	10.65						
WVFS4	10.65						
WVFS3	10.65						
WVFS2	10.65						
WVFS1	10.65						
WVFCAL	10.65						
WVF3FT	10.65						
WVF5FT	9.65						
HeadVolt	6.40						
CCL	5.44						
			GR-Probe275dig (080830) HT Probe 2 3/4" Gamma CCL	6.40	2.75	57.00	
GR	1.42						

Dataset: oxy_varra_10-2_rcbl_03-jun-2022.db: field/well/main/pass1.1
 Total length: 16.60 ft
 Total weight: 152.00 lb
 O.D.: 2.75 in

Log Variables

DatabaseC:\ProgramData\Warrrior\Data\oxy_varra_10-2_rcbl_03-jun-2022.db
 Dataset field/well/main/pass1.1/_vars_

Top - Bottom

BHTEMP_Src TEMP	BOREID in 7.875	BOTTEMP degF 100	CASEOD in 4.5	CASETHCK in 0	CASEWGHT lb/ft 11.6	MAXAMPL mV 81.2	MINAMPL mV 1
MINATTN db/ft 0.8	PERFS No	PPT usec 249	SRFTEMP degF 0	TDEPTH ft 0			

Variable Description

BHTEMP_Src : BHTEMP Input Source Selector
 BOREID : Borehole I.D.
 BOTTEMP : Bottom Hole Temperature
 CASEOD : Casing O.D.
 CASETHCK : Casing Thickness
 CASEWGHT : Casing Weight
 MAXAMPL : Maximum Amplitude

MINAMPL : Minimum Amplitude
 MINATTN : Minimum Attenuation
 PERFS : Perforation Flag
 PPT : Predicted Pipe Time
 SRFTEMP : Surface Temperature
 TDEPTH : Total Depth

Calibration Report

Database File oxy_varra_10-2_rcbl_03-jun-2022.db
 Dataset Pathname main/pass1.1
 Dataset Creation Fri Jun 03 10:39:57 2022

Gamma Ray Calibration Report

Serial Number: 080830
 Tool Model: Probe275dig
 Performed: (Not Performed)

Calibrator Value: 1.0 GAPI

Background Reading: 0.0 cps
 Calibrator Reading: 1.0 cps

Sensitivity: 1.0000 GAPI/cps

Segmented Cement Bond Log Calibration Report

Serial Number: FW1311-22
 Tool Model: Probe 2.75 Radii W/Temp

Calibration Casing Diameter: 4.500 in
 Calibration Depth: 785.142 ft

Master Calibration, performed (Derived):

	Raw (v)		Calibrated (mv)		Results	
	Zero	Cal	Zero	Cal	Gain	Offset
3'	0.000	0.843	0.800	81.196	95.327	0.800
CAL	0.693	0.693				
5'	0.000	0.744	0.800	81.196	108.068	0.800
SUM						
S1	0.000	0.825	0.000	100.000	121.175	-0.000
S2	0.000	0.859	0.000	100.000	116.351	-0.000
S3	0.000	0.881	0.000	100.000	113.479	-0.000
S4	0.000	0.868	0.000	100.000	115.180	0.000

S4	0.000	0.868	0.000	100.000	115.189	-0.000
S5	0.000	0.849	0.000	100.000	117.839	-0.000
S6	0.000	0.828	0.000	100.000	120.764	-0.000
S7	0.000	0.812	0.000	100.000	123.186	-0.000
S8	0.000	0.809	0.000	100.000	123.668	-0.000

Internal Reference Calibration, performed (Not Performed):

	Raw (v)		Calibrated (v)		Results	
	Zero	Cal	Zero	Cal	Gain	Offset
CAL	0.000	0.000	0.693	0.693	1.000	0.000

Air Zero Calibration, performed Fri Jun 03 10:01:48 2022:

	Raw (v)		Calibrated (v)		Results	
	Zero		Zero		Offset	
3'	0.000		0.000		0.000	
5'	0.000		0.000		0.000	
SUM						
S1	0.000		0.000		0.000	
S2	0.000		0.000		0.000	
S3	0.000		0.000		0.000	
S4	0.000		0.000		0.000	
S5	0.000		0.000		0.000	
S6	0.000		0.000		0.000	
S7	0.000		0.000		0.000	
S8	0.000		0.000		0.000	



Company OXY
 Well Varra 10-2
 Field Wattenberg
 County Weld
 State CO
 Country