

# **Wellhead Closure Checklist** **COGCC Rule 911.a.(4) Environmental Site Closure Assessment Field Form**

Additional attachments (optional):	Pit Closure	Tank Battery Closure	Flowline Closure	Partially Buried Vault Closure
Site Name & COGCC Facility Number: Shable #24-40	Date: 2-7-22	Remediation Project #: 21729		
Associated Wells: 05-123-27337	Age of Site: years	Number of Photos Attached: 1		
Location: (GPS coordinates of wellhead or southeastern most wellhead for multiple) 40.301223 / -104.681450				Estimated Facility Size (acres):

General Condition of Site: (General observations regarding housekeeping, corrosion, waste management, etc.)

Good Condition

USCS Soil Type: SC

Estimated Depth to Groundwater: ~6-12'

Hydrocarbon Impacted Soils / Spills: (Note estimated size and if impact appears to be surficial or extends to an unknown depth)

Slight petroleum hydrocarbon odor and black staining observed

Salt Crusted Soils or Impacted Vegetation: (Note estimated size and if impact appears to be surficial or extends to an unknown depth)

None observed

## **Wellhead(s)**

Well API	05-123-27337				
Age	years				
Condition of surface around wellhead	Good- Per Crew				
PID Readings	N/A-Excavated upon arrival				
Condition of subsurface (estimated present)	Slight petroleum hydrocarbon odor and black staining observed				
PID Readings	256.1	11.4	8.4	6.6	56.5
Sample taken? Location/Sample ID#	WH-SS-01 @ 6'	WH-SS-02 @ 6'	WH-SS-03 @ 6'	WH-SS-04 @ 6'	WH-FS-01 @ 7'
Photo Number(s)	See photolog				

Other observations regarding wellheads:

Well casing cut/capped following assessment

## **Summary**

Was impacted soil identified?

No

Yes - less than 10 cubic yards

Yes - more than 10 cubic yards

Total number of samples field screened:

5

Total number of samples collected:

5

Highest PID Reading:

256.1

Total number of samples submitted to lab for analysis:

5

If more than 10 cubic yards of impacted soil were observed:

Vertical extent:

Estimated spill volume:

Lateral extent:

Volume of soil removed:

Is additional investigation required?

Was groundwater encountered during the investigation?

No

Yes - not impacted or in contact with impacted soils

Yes - groundwater impacted and/or in contact with impacted soils

Measured depth to groundwater:

Was remedial groundwater removal conducted?

Yes

No

Date Groundwater was encountered:

Commencement date of removal:

Sheen on groundwater?

Yes

No

Volume of groundwater removed prior to sampling:

Free product observed?

Yes

No

Volume of groundwater removed post sampling:

Total number of samples collected:

Total Volume of groundwater removed:

Total number of samples submitted to lab for analysis:

# **Flowline Closure Checklist** **COGCC Rule 911.a.(4) Environmental Site Closure Assessment Field Form**

Additional Attachments:	Tank Battery Closure	Wellhead Closure	Pit Closure	Partially Buried Vault Closure
		2-7-22		
Site Name & COGCC Facility Number: Shable #24-40		Date: 5-3-22		Remediation Project #: 21729
Associated Wells: 05-123-27337		Age of Site: years		Number of Photos Attached: 3

Starting point: (GPS coordinates and descriptions) At well: 40.301223 / -104.681450

End point: (GPS coordinates and descriptions) At separator: 40.300272 / -104.680599

USCS Soil Type: SC Estimated Depth to Groundwater: ~6-12'

Hydrocarbon Impacted Soils / Spills: (Note estimated size and if impact appears to be surficial or extends to an unknown depth)  
None observed

Salt Crusted Soils or Impacted Vegetation: (Note estimated size and if impact appears to be surficial or extends to an unknown depth)  
None observed

## **Flowlines**

Flowline type	O. G. W						
Depth	~3'						
Age	years						
Length	~505'						
Construction Material	Steel						
Were flowlines pulled?	No - abandoned in place						
Visual Integrity of lines	N/A						
Visual impacts if trenched	None observed						
PID Readings if trenched	4.8	1.4	1.1				
Sample taken? Location/Sample ID#	FL-SS-01 @ 3'	FL-SS-02 @ 3'	FL-SS-03 @ 3'				
Photo Number(s)	See photo log						

Other observations regarding on location flowlines: Flowline abandoned in place. Flowline terminus / Pt. B at separator assessed + lab analyzed. Two directional changes assessed via hand auger + lab analyzed

## **Summary**

Was impacted soil identified? ☒ No Yes - less than 10 cubic yards Yes - more than 10 cubic yards

Total number of samples field screened: 3 Total number of samples collected: 3

Highest PID Reading: 4.8 Total number of samples submitted to lab for analysis: 3

If more than 10 cubic yards of impacted soil were observed:

Vertical extent: Lateral extent: Estimated spill volume: Volume of soil removed:

Is additional investigation required? N/A

Was groundwater encountered during the investigation? ☒ No Yes - not impacted or in contact with impacted soils Yes - groundwater impacted and/or in contact with impacted soils

Measured depth to groundwater: Was remedial groundwater removal conducted? Yes No

Date Groundwater was encountered: Commencement date of removal:

Seen on groundwater? Yes No Volume of groundwater removed prior to sampling:

Free product observed? Yes No Volume of groundwater removed post sampling:

Total number of samples collected: Total Volume of groundwater removed:

Total number of samples submitted to lab for analysis:



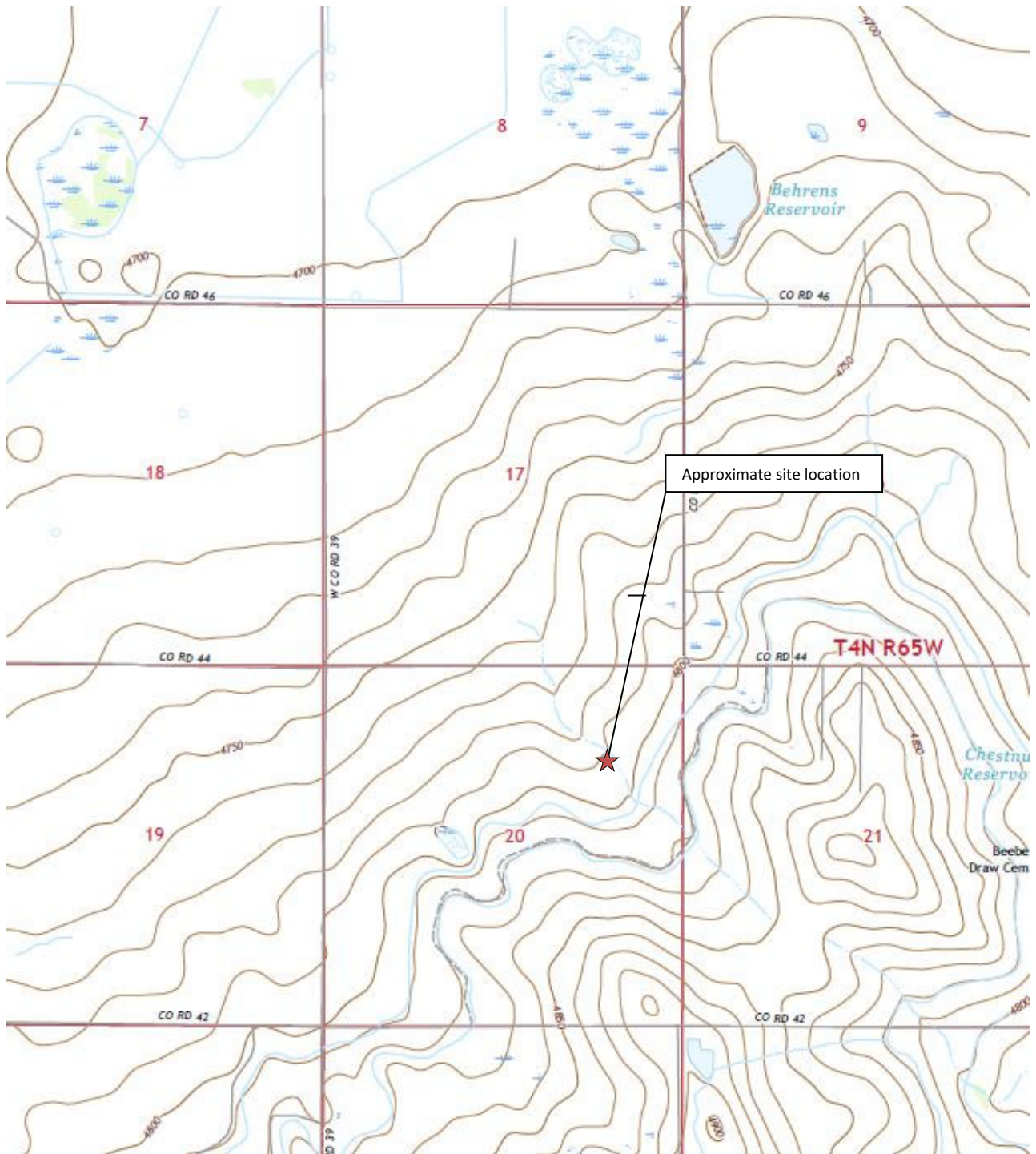
## **FIGURES**

**Figure 1: Topographic Site Location Map**

**Figure 2: Aerial Site Location Map**

**Figure 3: Soil Analytical Map**

**Figure 4: Polycyclic Aromatic Hydrocarbons Map**



**Topographic Site Location Map**

Shable #24-20  
 Closure Assessment  
 40.301223 / -104.681450  
 SE ¼ NE ¼ Sec. 20 T4N R65W 6PM  
 Weld County, Colorado  
 API # 05-123-27337  
 Remediation # 21729



**EAGLE**  
 ENVIRONMENTAL  
 CONSULTING, INC.

Source: USGS 7.5 Minute Topographic Map, La Salle, CO Quadrangle 2019

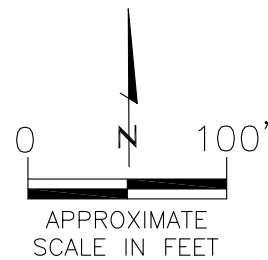
**Figure 1**





#### LEGEND

- FORMER SHALE #24-20 WELLHEAD (PLUGGED AND ABANDONED)
- ASSOCIATED SEPARATOR
- APPROXIMATE FLOWLINE LOCATION (ABANDONED IN PLACE)
- APPROXIMATE FLOWLINE SAMPLE LOCATIONS



#### AERIAL SITE LOCATION MAP

SHALE #24-20  
CLOSURE ASSESSMENT  
40.301223 / -104.681450  
SE¼ NE¼ SEC.20 T4N R65W 6PM  
WELD COUNTY, COLORADO  
API # 05-123-27337  
REMEDATION # 21729

DATE:

09/02/22

FIG. NO.

2

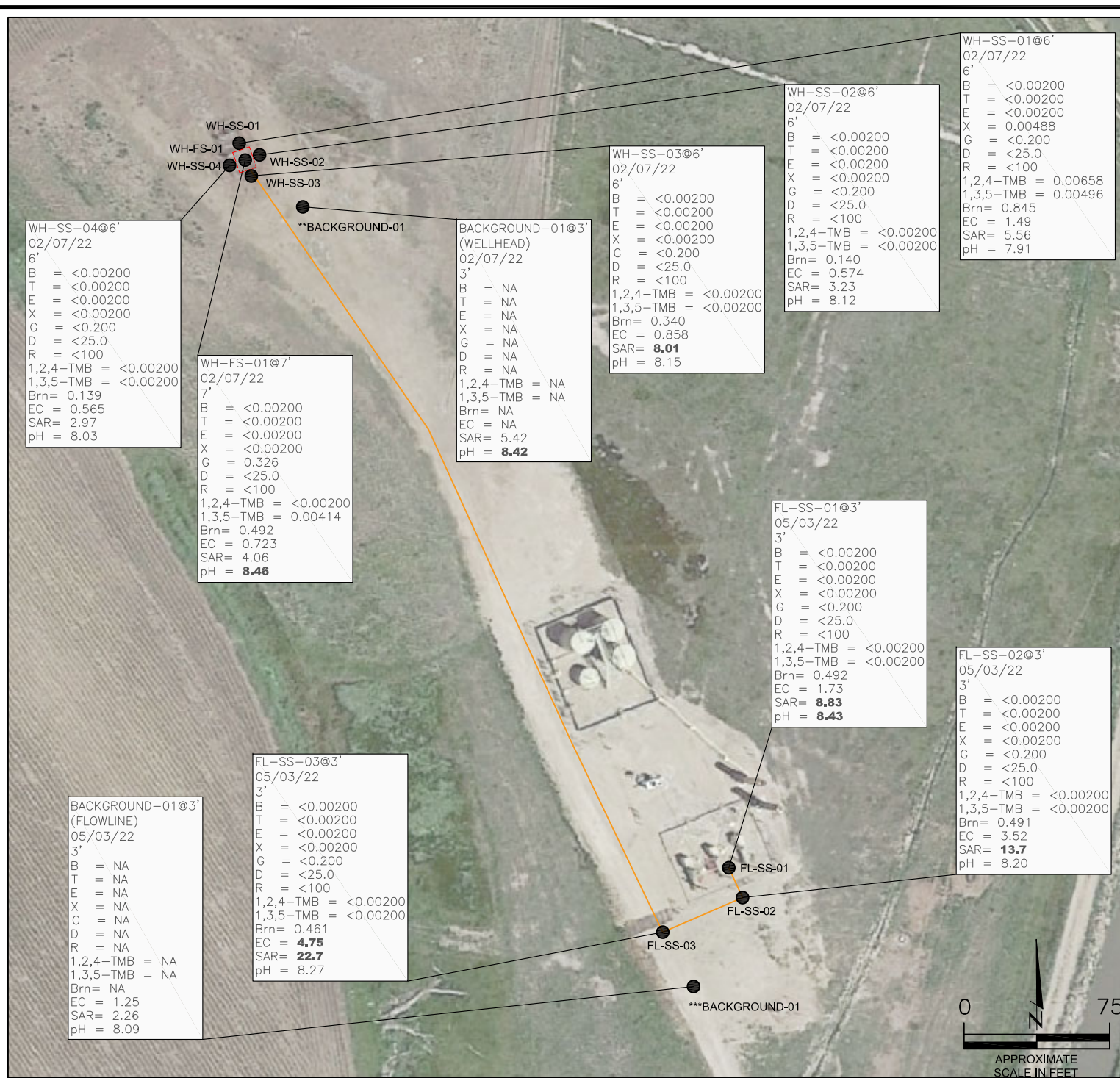
DRAWN BY:

AMN



**EAGLE**  
ENVIRONMENTAL  
CONSULTING, INC.  
8000 W 44th Ave, Wheat Ridge, CO 80033  
Ph: 303-433-0479 • F: 303-325-5449





**LEGEND**

----- INITIAL ASSESSMENT BOUNDARIES

--- APPROXIMATE FLOWLINE LOCATION (ABANDONED)

● APPROXIMATE LOCATION OF SOIL SAMPLES SUBMITTED FOR LABORATORY ANALYSIS

SS-02

**PARAMETERS**

**SAMPLE LOCATION**

**DATE**

**DEPTH (FEET)**

B = BENZENE (mg/kg)  
T = TOLUENE (mg/kg)  
E = ETHYLBENZENE (mg/kg)  
X = TOTAL XYLENES (mg/kg)  
G = TPH-GRO (mg/kg)  
D = TPH-DRO (mg/kg)  
R = TPH-RRO (mg/kg)

1,2,4-TMB = 1,2,4 TRIMETHYLBENZENE (mg/kg)  
1,3,5-TMB = 1,3,5 TRIMETHYLBENZENE (mg/kg)  
Brn= BORON (mg/L)  
EC = SPECIFIC CONDUCTANCE (mmhos/cm)  
SAR= SODIUM ADSORPTION RATIO  
pH = pH (pH UNITS)

mg/kg = MILLIGRAMS PER KILOGRAM  
mg/L = MILLIGRAMS PER LITER  
mmhos/cm = MILLIHOS PER CENTIMETER

NA = NOT ANALYZED

TPH-GRO = TOTAL PETROLEUM HYDROCARBONS - GASOLINE RANGE ORGANICS  
TPH-DRO = TOTAL PETROLEUM HYDROCARBONS - DIESEL RANGE ORGANICS  
TPH-RRO = TOTAL PETROLEUM HYDROCARBONS - RESIDUAL RANGE ORGANICS

**NOTES:**

\*\*BACKGROUND-01 WAS COLLECTED ADJACENT TO THE WELLHEAD LOCATION ON 02/07/22

\*\*\*BACKGROUND-01 WAS COLLECTED ADJACENT TO THE FLOWLINE SAMPLE LOCATIONS ON 05/03/22

VALUES PRESENTED WITH A LESS THAN SYMBOL (<) DID NOT CONTAIN CONCENTRATIONS AT OR ABOVE LABORATORY DETECTION LIMITS

VALUES PRESENTED IN **BOLD** EXCEED COGCC TABLE 915-1 REGULATORY LIMITS

COGCC = COLORADO OIL AND GAS CONSERVATION COMMISSION

**SOIL ANALYTICAL MAP**  
SHABLE #24-20  
CLOSURE ASSESSMENT  
40.301223 / -104.681450  
SE¼ NE¼ SEC.20 T4N R65W 6PM  
WELD COUNTY, COLORADO  
API # 05-123-27337  
REMEDIATION # 21729

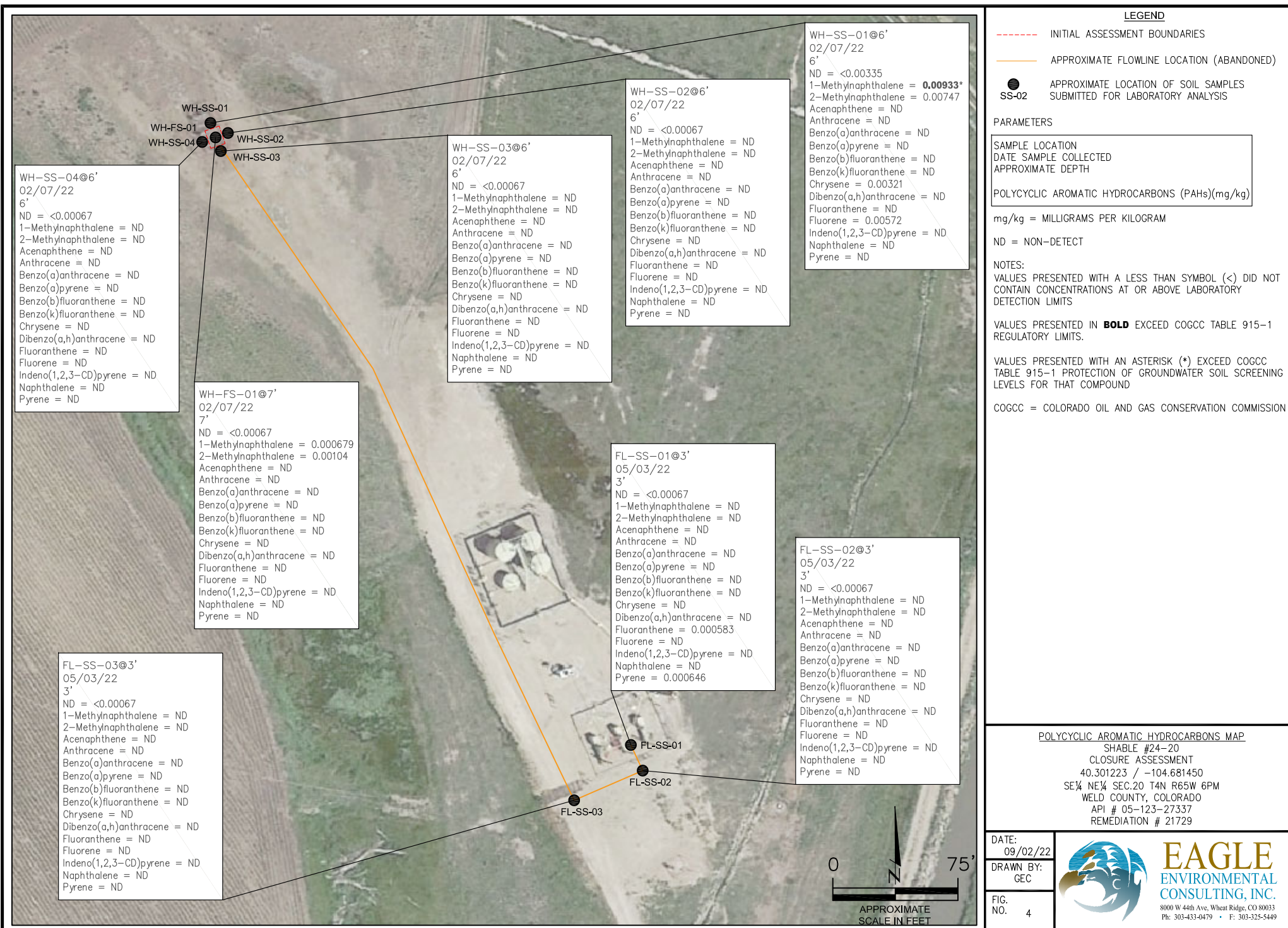
**DATE:**  
09/02/22

**DRAWN BY:**  
GEC

**FIG. NO.**  
3

**EAGLE ENVIRONMENTAL CONSULTING, INC.**  
8000 W 44th Ave, Wheat Ridge, CO 80033  
Ph: 303-433-0479 • F: 303-325-5449







(NS) WH-SS-01  
WH-FS-01  
WH-SS-04 (NS)  
WH-SS-02 (NS)  
WH-SS-03 (NS)  
BACKGROUND-01

BACKGROUND-01@3'  
02/07/22  
3'

Arsenic = 0.943\*\*\*  
Barium = 32.7  
Cadmium = NA  
Chromium (VI) = NA  
Copper = NA  
Lead = 7.41  
Nickel = NA  
Selenium = 0.246  
Silver = NA  
Zinc = NA

WH-SS-01@6'  
02/07/22  
6'

Arsenic = **2.41\*\*\***  
Barium = **714\***  
Cadmium = 0.237  
Chromium (VI) = <0.488\*\*  
Copper = 9.85  
Lead = **14.3\***  
Nickel = 8.68  
Selenium = **0.32\***  
Silver = 0.0908  
Zinc = 48.6

FL-SS-01 (NS)  
FL-SS-02 (NS)  
FL-SS-03 (NS)



#### LEGEND

- INITIAL ASSESSMENT BOUNDARIES
- APPROXIMATE FLOWLINE LOCATION (ABANDONED)
- APPROXIMATE LOCATION OF SOIL SAMPLES SUBMITTED FOR LABORATORY ANALYSIS

#### PARAMETERS

SAMPLE LOCATION  
DATE SAMPLE COLLECTED  
APPROXIMATE DEPTH  
Arsenic = (mg/kg)  
Barium = (mg/kg)  
Cadmium = (mg/kg)  
Chromium (VI) = (mg/kg)  
Copper = (mg/kg)  
Lead = (mg/kg)  
Nickel = (mg/kg)  
Selenium = (mg/kg)  
Silver = (mg/kg)  
Zinc = (mg/kg)

mg/kg = MILLIGRAMS PER KILOGRAM

NA – NOT ANALYZED  
(NS) – NOT SAMPLED

NOTE:  
VALUES PRESENTED WITH A LESS THAN SYMBOL (<) DID NOT CONTAIN CONCENTRATIONS AT/OR ABOVE LABORATORY REPORTING LIMITS AND/OR MINIMUM DETECTION LIMITS.

VALUES PRESENTED IN **BOLD** EXCEED COGCC TABLE 915-1 VALUES

VALUES PRESENTED WITH ASTERISK (\*) EXCEED COGCC TABLE 915-1 PROTECTION OF GROUNDWATER SOIL SCREENING LEVELS"

\*\*ACHIEVABLE PRACTICAL QUANTITATIVE LIMITS FOR HEXAVALENT CHROMIUM (Cr VI) IN SOILS IS IN THE RANGE OF 0.1 TO 1 mg/kg.

\*\*\*ARSENIC IS NATURALLY OCCURRING IN COLORADO. THE LOCAL CLEAN-UP LEVEL (1.18 mg/kg) IS 1.25\*BACKGROUND (0.943 mg/kg)

COGCC = COLORADO OIL AND GAS CONSERVATION COMMISSION

METALS IN SOIL MAP  
SHABLE #24-20  
CLOSURE ASSESSMENT  
40.301223 / -104.681450  
SE¼ NE¼ SEC.20 T4N R65W 6PM  
WELD COUNTY, COLORADO  
API # 05-123-27337  
REMEDATION # 21729

DATE:  
09/02/22

DRAWN BY:  
GEC

FIG.  
NO. 5



**EAGLE**  
ENVIRONMENTAL  
CONSULTING, INC.  
8000 W 44th Ave, Wheat Ridge, CO 80033  
Ph: 303-433-0479 • F: 303-325-5449





## **TABLES**

**Table 1: Photoionization Detector Reading Summary**

**Table 2: Soil Analytical Results Summary**

**Table 3: Polycyclic Aromatic Hydrocarbons Analytical Results Summary**

**TABLE 1**  
**PHOTOIONIZATION DETECTOR READING SUMMARY**  
**SHABLE #24-20**  
**CLOSURE ASSESSMENT**  
**40.301223 / -104.681450**  
**SE1/4 NE1/4 SEC.20 T4N R65W 6PM**  
**WELD COUNTY, COLORADO**  
**API # 05-123-27337**  
**REMEDIALTION # 21729**

Sample Location (Latitude/Longitude)	Date	Approximate Depth (feet)	PID Reading (ppm-v)	Lab Submission (Y/N)
WH-SS-01 @ 6' (40.301295 / -104.681509)	02/07/22	6	256.1	Y
WH-SS-02 @ 6' (40.301283 / -104.681471)	02/07/22	6	11.4	Y
WH-SS-03 @ 6' (40.301252 / -104.681491)	02/07/22	6	8.4	Y
WH-SS-04 @ 6' (40.301265 / -104.681528)	02/07/22	6	6.6	Y
WH-FS-01 @ 7' (40.301275 / -104.681501)	02/07/22	7	56.5	Y
**Background-01 @ 3' (40.301206 / -104.681402)	02/07/22	3	9.9	Y
FL-SS-01 @ 3' (40.300277 / -104.680611)	05/03/22	3	4.8	Y
FL-SS-02 @ 3' (40.300221 / -104.680583)	05/03/22	3	1.4	Y
FL-SS-03 @ 3' (40.300181 / -104.680724)	05/03/22	3	1.1	Y
***Background-01 @ 3' (40.300111 / -104.680680)	05/03/22	3	1.0	Y
(Y/N) = Yes or No ppm-v = parts per million by volume PID = photoionization detector				
**Background -01 was collected adjacent to the wellhead on 02/07/22 ***Background-01 was collected adjacent to the flowline sample locations on 05/03/22				



TABLE 2  
SOIL ANALYTICAL RESULTS SUMMARY  
SHABLE #24-20  
CLOSURE ASSESSMENT  
40.301223 / -104.681450  
SE1/4 NE1/4 SEC.20 T4N R65W 6PM  
WELD COUNTY, COLORADO  
API # 05-123-27337  
REMEDATION # 21729

Sample Location (Latitude/Longitude)	Date	Approximate Depth (feet)	PID Reading (ppm-v)	Benzene (mg/kg)	Toluene (mg/kg)	Ethylbenzene (mg/kg)	Total Xylenes (mg/kg)	TPH-GRO (mg/kg)	TPH-DRO (mg/kg)	TPH-RRO (mg/kg)	1,2,4-TMB (mg/kg)	1,3,5-TMB (mg/kg)	Boron (mg/L)	Specific Conductance (mmhos/cm)	pH (pH units)	SAR
COGCC Table 915-1 Residential Screening Levels (mg/kg)				1.20	490	5.8	58	500			30	27	2	<4	6-8.3	<6
COGCC Table 915-1 Protection of Groundwater Soil Screening Levels				0.0026	0.69	0.78	9.9	--			0.0081	0.0087	--	--	--	--
WH-SS-01 @ 6' (40.301295 / -104.681509)	02/07/22	6	256.1	<0.00200	<0.00200	<0.00200	0.00488	<0.200	<25.0	<100	0.00658	0.00496	0.845	1.49	7.91	5.56
WH-SS-02 @ 6' (40.301283 / -104.681471)	02/07/22	6	11.4	<0.00200	<0.00200	<0.00200	<0.00200	<0.200	<25.0	<100	<0.00200	<0.00200	0.140	0.574	8.12	3.23
WH-SS-03 @ 6' (40.301252 / -104.681491)	02/07/22	6	8.4	<0.00200	<0.00200	<0.00200	<0.00200	<0.200	<25.0	<100	<0.00200	<0.00200	0.340	0.858	8.15	8.01
WH-SS-04 @ 6' (40.301265 / -104.681528)	02/07/22	6	6.6	<0.00200	<0.00200	<0.00200	<0.00200	<0.200	<25.0	<100	<0.00200	<0.00200	0.139	0.565	8.03	2.97
WH-FS-01 @ 7' (40.301275 / -104.681501)	02/07/22	7	56.5	<0.00200	<0.00200	<0.00200	<0.00200	0.326	<25.0	<100	<0.00200	0.00414	0.492	0.723	8.46	4.06
**Background-01 @ 3' (40.301206 / -104.681402)	02/07/22	3	9.9	NA	NA	NA	NA	NA	NA	NA	NA	NA	NA	NA	8.42	5.42
FL-SS-01 @ 3' (40.300277 / -104.680611)	05/03/22	3	4.8	<0.00200	<0.00200	<0.00200	<0.00200	<0.200	<25.0	<100	<0.00200	<0.00200	0.492	1.73	8.43	8.83
FL-SS-02 @ 3' (40.300221 / -104.680583)	05/03/22	3	1.4	<0.00200	<0.00200	<0.00200	<0.00200	<0.200	<25.0	<100	<0.00200	<0.00200	0.491	3.52	8.20	13.7
FL-SS-03 @ 3' (40.300181 / -104.680724)	05/03/22	3	1.1	<0.00200	<0.00200	<0.00200	<0.00200	<0.200	<25.0	<100	<0.00200	<0.00200	0.461	4.75	8.27	22.7
***Background-01 @ 3' (40.300111 / -104.680680)	05/03/02	3	1.0	NA	NA	NA	NA	NA	NA	NA	NA	NA	NA	1.25	8.09	2.26
COGCC = Colorado Oil and Gas Conservation Commission mg/kg = milligrams per kilogram mmhos/cm = millimhos per centimeter PID = Photoionization Detector ppm-v = parts per million by volume mg/L = milligrams per liter SAR = Sodium Adsorption Ratio Note: Values presented with a less than symbol (<) did not contain concentrations at or above the laboratory MDL and/or reporting limit. Note: Values presented in <b>BOLD</b> contained concentrations exceeding COGCC Table 915-1 Regulatory Limits.																
**Background -01 was collected adjacent to the wellhead on 02/07/22 ***Background-01 was collected adjacent to the flowline sample locations on 05/03/22 NA = Not Analyzed TPH-GRO = Total Petroleum Hydrocarbons - Gasoline Range Organics TPH-DRO = Total Petroleum Hydrocarbons - Diesel Range Organics TPH-RRO = Total Petroleum Hydrocarbons - Residual Range Organics 1,2,4-TMB = 1,2,4-Trimethylbenzene 1,3,5-TMB = 1,3,5-Trimethylbenzene MDL = Minimum Detection Limits																

TABLE 3  
POLYCYCLIC AROMATIC HYDROCARBONS ANALYTICAL RESULTS SUMMARY  
SHABLE #24-20  
CLOSURE ASSESSMENT  
40.301223 / -104.681450  
SE1/4 NE1/4 SEC.20 T4N R65W 6PM  
WELD COUNTY, COLORADO  
API # 05-123-27337  
REMEDATION # 21729

Sample Location (Latitude/Longitude)	Date	Approximate Depth (feet)	PID Reading (ppm- v)	1-Methyl- naphthalene (mg/kg)	2-Methyl- naphthalene (mg/kg)	Acenaphthene (mg/kg)	Anthracene (mg/kg)	Benzo(a)- anthracene (mg/kg)	Benzo(a)- pyrene (mg/kg)	Benzo(b)- fluoranthene (mg/kg)	Benzo(k)- fluoranthene (mg/kg)	Chrysene (mg/kg)	Dibenzo(a,h)- anthracene (mg/kg)	Fluoranthene (mg/kg)	Fluorene (mg/kg)	Indeno(1,2,3- cd)-pyrene (mg/kg)	Naphthalene (mg/kg)	Pyrene (mg/kg)
COGCC Table 915-1 Residential Screening Levels				18	24	360	1,800	1.1	0.11	1.1	11	110	0.11	240	240	1.1	2	180
COGCC Table 915-1 Protection of Groundwater Soil Screening Levels				0.006	0.019	0.55	5.8	0.011	0.24	0.3	2.9	9	0.096	8.9	0.54	0.98	0.0038	1.3
WH-SS-01 @ 6' (40.301295 / -104.681509)	02/07/22	6	256.1	<b>0.00933*</b>	0.00747	<0.00335	<0.00335	<0.00335	<0.00335	<0.00335	<0.00335	0.00321	<0.00335	<0.00335	0.00572	<0.00335	<0.00335	<0.00335
WH-SS-02 @ 6' (40.301283 / -104.681471)	02/07/22	6	11.4	<0.00067	<0.00067	<0.00067	<0.00067	<0.00067	<0.00067	<0.00067	<0.00067	<0.00067	<0.00067	<0.00067	<0.00067	<0.00067	<0.00067	<0.00067
WH-SS-03 @ 6' (40.301252 / -104.681491)	02/07/22	6	8.4	<0.00067	<0.00067	<0.00067	<0.00067	<0.00067	<0.00067	<0.00067	<0.00067	<0.00067	<0.00067	<0.00067	<0.00067	<0.00067	<0.00067	<0.00067
WH-SS-04 @ 6' (40.301265 / -104.681528)	02/07/22	6	6.6	<0.00067	<0.00067	<0.00067	<0.00067	<0.00067	<0.00067	<0.00067	<0.00067	<0.00067	<0.00067	<0.00067	<0.00067	<0.00067	<0.00067	<0.00067
WH-FS-01 @ 7' (40.301275 / -104.681501)	02/07/22	7	56.5	0.000679	0.00104	<0.00067	<0.00067	<0.00067	<0.00067	<0.00067	<0.00067	<0.00067	<0.00067	<0.00067	<0.00067	<0.00067	<0.00067	<0.00067
FL-SS-01 @ 3' (40.300277 / -104.680611)	05/03/22	3	4.8	<0.00067	<0.00067	<0.00067	<0.00067	<0.00067	<0.00067	<0.00067	<0.00067	<0.00067	<0.00067	0.000583	<0.00067	<0.00067	<0.00067	0.000648
FL-SS-02 @ 3' (40.300221 / -104.680583)	05/03/22	3	1.4	<0.00067	<0.00067	<0.00067	<0.00067	<0.00067	<0.00067	<0.00067	<0.00067	<0.00067	<0.00067	<0.00067	<0.00067	<0.00067	<0.00067	<0.00067
FL-SS-03 @ 3' (40.300181 / -104.680724)	05/03/22	3	1.1	<0.00067	<0.00067	<0.00067	<0.00067	<0.00067	<0.00067	<0.00067	<0.00067	<0.00067	<0.00067	<0.00067	<0.00067	<0.00067	<0.00067	<0.00067
COGCC = Colorado Oil and Gas Conservation Commission mg/kg = milligrams per kilogram ppm-v = parts per million by volume Note: Values presented with a less than symbol (<) did not contain concentrations at or above the laboratory reporting limit. Note: Values presented in <b>BOLD</b> contained concentrations exceeding COGCC Table 915-1 Regulatory Limits. Values presented with an asterisk (*) contained concentrations exceeding COGCC Table 915-1 Protection of Groundwater Soil Screening Levels																		



TABLE 4  
METALS ANALYTICAL RESULTS SUMMARY  
SHABLE #24-20  
CLOSURE ASSESSMENT  
40.301223 / -104.681450  
SE1/4 NE1/4 SEC.20 T4N R65W 6PM  
WELD COUNTY, COLORADO  
API # 05-123-27337  
REMEDATION # 21729

Sample Location (Latitude/Longitude)	Date	Approximate Depth (feet)	Arsenic (mg/kg)	Barium (mg/kg)	Cadmium (mg/kg)	Hexavalent Chromium (mg/kg)	Copper (mg/kg)	Lead (mg/kg)	Nickel (mg/kg)	Selenium (mg/kg)	Silver (mg/kg)	Zinc (mg/kg)
COGCC Table 915-1 Residential Screening Levels			0.68***	15,000	71	0.3**	3,100	400	1,500	390	390	23,000
COGCC Table 915-1 Protection of Groundwater Soil Screening Levels			0.29***	82	0.38	0.00067**	46	14	26	0.26	0.8	370
Local Clean-up Levels			1.18***	--	--	0.1 to 1**	--	--	--	--	--	--
WH-SS-01 @ 6' (40.301295 / -104.681509)	02/07/22	6	2.41***	714*	0.237	<0.488**	9.85	14.3*	8.68	0.32*	0.0908	48.6
*****Background-01 @ 3' (40.301206 / -104.681402)	02/07/22	3	0.943***	32.7	NA	NA	NA	7.41	NA	0.246	NA	NA
COGCC = Colorado Oil and Gas Conservation Commission mg/kg = milligrams per kilogram NA - Not Analyzed Notes: Values presented with a less than symbol (<) did not contain concentrations at or above the laboratory reporting limit or minimum detection levels. Values presented in <b>BOLD</b> contained concentrations exceeding applicable COGCC Table 915-1 Regulatory Limits Values presented with asterisk (*) contained concentrations exceeding COGCC Table 915-1 Protection of Groundwater Soil Screening Levels **Achievable practical quantitative limits for Hexavalent Chromium in soils is in the range of 0.1 to 1 mg/kg. ***Arsenic is naturally occurring in Colorado. The Local Clean-up Level (1.18 mg/kg) is 1.25*background (0.943 mg/kg)												



## **ATTACHMENT A**

### **Photo Log**



# Shable #24-20

## API # 05-123-27337

## Remediation # 21729

Closure Assessment

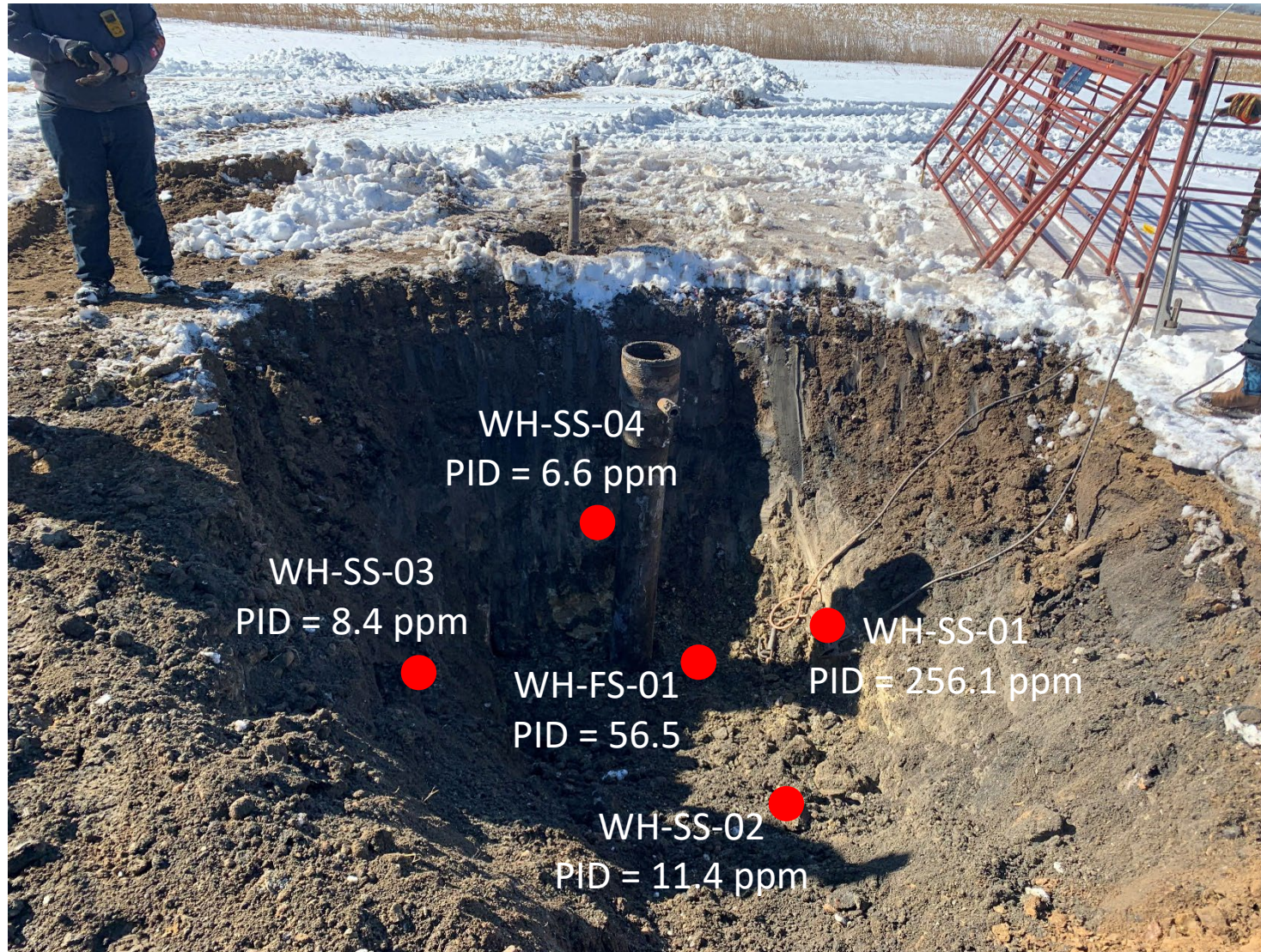
February - May 2022



**EAGLE**  
ENVIRONMENTAL  
CONSULTING, INC.  
8000 W 44th Ave, Wheat Ridge, CO 80033  
Ph: 303-433-0479 • F: 303-325-5449



## Wellhead Excavation – 02/07/22

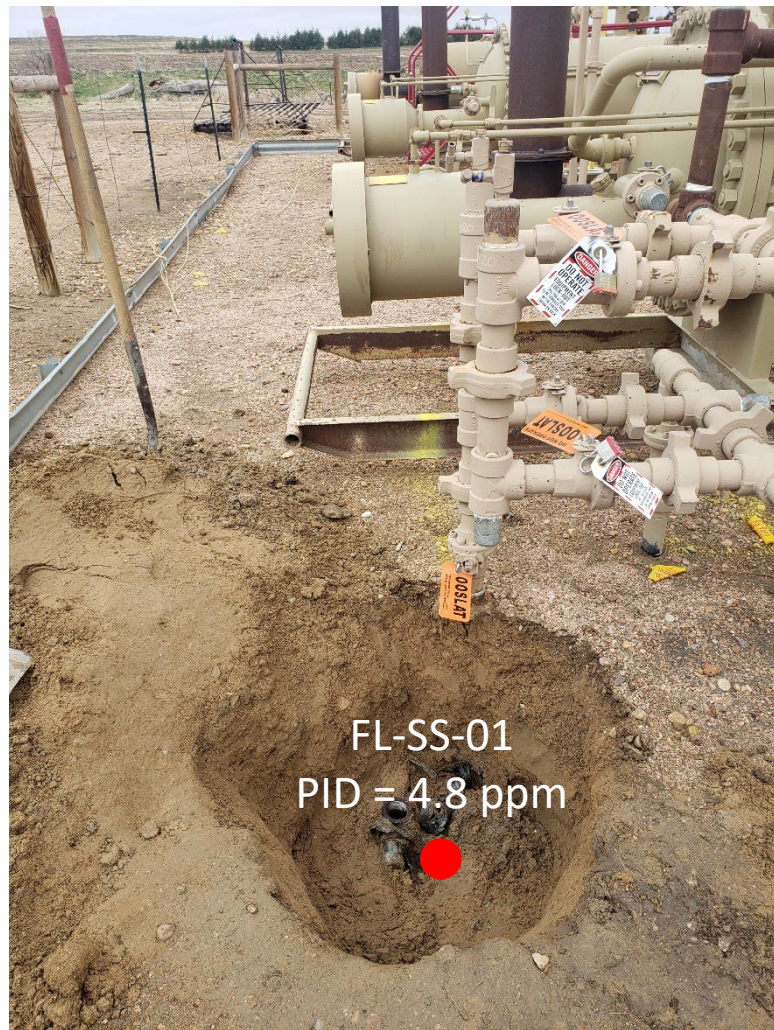


Looking west

Slight petroleum hydrocarbon odor observed, black staining appears organic with musty odor



# Flowline Closure Assessment – 05/03/22



Flowline terminus/Pt. B at separator

No petroleum hydrocarbon odor or staining observed



East-northeast to northwest flowline directional change

Sampled via hand auger

No petroleum hydrocarbon odor or staining observed



Southeast to east-northeast flowline directional change

Sampled via hand auger

No petroleum hydrocarbon odor or staining observed





## **ATTACHMENT B**

### **Laboratory Analytical Reports**



February 21, 2022

Eagle Environmental Consulting, Inc.

Martin C Eckert III

8000 W 44th Ave

Wheat Ridge CO 80033

Project Name - Noble - Shable #24-20

Project Number - [none]

Attached are your analytical results for Noble - Shable #24-20 received by Origins Laboratory, Inc. February 08, 2022. This project is associated with Origins project number Y202170-01.

The analytical results in the following report were analyzed under the guidelines of EPA Methods. These methods are identified as follows; "SW" are defined in SW-846, "EPA" are defined in 40CFR part 136 and "SM" are defined in the most current revision of Standard Methods For the Examination of Water and Wastewater.

The analytical results apply specifically to the samples and analyses specified per the attached Chain of Custody. As such, this report shall not be reproduced except in full, without the written approval of Origin's laboratory.

Unless otherwise noted, the analytical results for all soil samples are reported on a wet weight basis. All analytical analyses were performed under NELAP guidelines unless noted by a data qualifier.

Any holding time exceedances, deviations from the method specifications or deviations from Origins Laboratory's Standard Operating Procedures are outlined in the case narrative.

Thank you for selecting Origins for your analytical needs. Please contact us with any questions concerning this report, or if we can help with anything at all.

Origins Laboratory, Inc.  
303.433.1322  
o-squad@oelabinc.com



1725 Elk Place, Denver, CO 80211 | Phone: 303.433.1322 | Fax: 303.265.9645

Eagle Environmental Consulting, Inc.  
8000 W 44th Ave  
Wheat Ridge CO 80033

Martin C Eckert III  
Project Number: [none]  
Project: Noble - Shable #24-20

## CROSS REFERENCE REPORT

Sample ID	Laboratory ID	Matrix	Date Sampled	Date Received
WH-SS-01@6'	Y202170-01	Soil	February 7, 2022 12:05	02/08/2022 17:15
WH-SS-02@6'	Y202170-02	Soil	February 7, 2022 12:06	02/08/2022 17:15
WH-SS-03@6'	Y202170-03	Soil	February 7, 2022 12:07	02/08/2022 17:15
WH-SS-04@6'	Y202170-04	Soil	February 7, 2022 12:08	02/08/2022 17:15
WH-FS-01@7'	Y202170-05	Soil	February 7, 2022 12:10	02/08/2022 17:15

Origins Laboratory, Inc.



*The results in this report apply to the samples analyzed in accordance with the chain of custody document. This analytical report must be reproduced in its entirety.*





Eagle Environmental Consulting, Inc.  
8000 W 44th Ave  
Wheat Ridge CO 80033

Martin C Eckert III  
Project Number: [none]  
Project: Noble - Shable #24-20

Origins Laboratory

F-012207-01-R1  
Effective Date: 01/09/12

Sample Receipt Checklist

Origins Work Order: Y202170

Client: Eagle

Client Project ID: Shable 24-20

Checklist Completed by: JG

Shipped Via: HD  
(UPS, FedEx, Hand Delivered, Pick-up, etc.)

Date/time completed: 2/9/22

Airbill #: N/A

Matrix(s) Received: (Check all that apply): X Soil/Solid

Water

Other:

(Describe)

Cooler Number/Temperature: 1 / 1.8 °C 1 °C 1 °C 1 °C

Thermometer ID: T003

Requirement Description	Yes	No	N/A	Comments (if any)
If samples require cooling, was the temperature between 0°C to ≤ 6°C <sup>(1)</sup> ?	<input checked="" type="checkbox"/>			
Is there ice present (document if blue ice is used)	<input checked="" type="checkbox"/>			
Are custody seals present on cooler? (if so, document in comments if they are signed and dated, broken or intact)		<input checked="" type="checkbox"/>		
Are custody seals present on each sample container? (if so, document in comments if they are signed and dated, broken or intact)		<input checked="" type="checkbox"/>		
Were all samples received intact <sup>(1)</sup> ?	<input checked="" type="checkbox"/>			
Was adequate sample volume provided <sup>(1)</sup> ?	<input checked="" type="checkbox"/>			
Are short holding time analytes or samples with HT's due within 48 hours present <sup>(1)</sup> ?		<input checked="" type="checkbox"/>		
Is a chain-of-custody (COC) present and filled out completely <sup>(1)</sup> ?	<input checked="" type="checkbox"/>			
Does the COC agree with the number and type of sample bottles received <sup>(1)</sup> ?	<input checked="" type="checkbox"/>			
Do the sample IDs on the bottle labels match the COC <sup>(1)</sup> ?	<input checked="" type="checkbox"/>			
Is the COC properly relinquished by the client with date and time recorded <sup>(1)</sup> ?	<input checked="" type="checkbox"/>			
For volatiles in water – is there headspace (> ¼ inch bubble) present? If yes, contact client and note in narrative.			<input checked="" type="checkbox"/>	
Are samples preserved that require preservation and was it checked <sup>(1)</sup> ? (note ID of confirmation instrument used in comments) / (preservation is not confirmed for subcontracted analyses in order to insure sample integrity)/(pH <2 for samples preserved with HNO <sub>3</sub> , HCL, H <sub>2</sub> SO <sub>4</sub> ) / (pH >10 for samples preserved with NaAsO <sub>2</sub> +NaOH, ZnAc+NaOH)			<input checked="" type="checkbox"/>	
Additional Comments (if any):				

<sup>(1)</sup>If NO, then contact the client before proceeding with analysis and note date/time and person contacted as well as the corrective action to in the additional comments (above) and the case narrative.

Reviewed by (Project Manager) Jm

Date/Time Reviewed 2-9-22

Origins Laboratory, Inc.

*Jordan A. Merrill*

The results in this report apply to the samples analyzed in accordance with the chain of custody document. This analytical report must be reproduced in its entirety.

Eagle Environmental Consulting, Inc.  
8000 W 44th Ave  
Wheat Ridge CO 80033

Martin C Eckert III  
Project Number: [none]  
Project: Noble - Shable #24-20

WH-SS-01@6'  
2/7/2022 12:05:00PM

Analyte	Result	Min Detection Limit	Reporting Limit	Units	Dilution	Batch	Prepared	Analyzed	Notes
---------	--------	---------------------	-----------------	-------	----------	-------	----------	----------	-------

Origins Laboratory, Inc.  
Y202170-01 (Soil)

### Boron (DTPA Sorbitol)

Boron	0.845	0.0982	mg/L	1	B2B0921	02/09/2022	02/10/2022	
-------	-------	--------	------	---	---------	------------	------------	--

### DRO/ORO by EPA 8015D

Diesel (C10-C28)	ND	25.0	mg/kg	1	B2B0904	02/09/2022	02/12/2022	U
Residual Range Organics (C28-C40)	ND	100	"	"	"	"	"	U

Surrogate: o-Terphenyl	93.7 %	50-150			"	"	"	
------------------------	--------	--------	--	--	---	---	---	--

### GBTEX+TMBs by 8260D

1,2,4-Trimethylbenzene	0.00658	0.00200	mg/kg	1	B2B0916	02/09/2022	02/13/2022	
1,3,5-Trimethylbenzene	0.00496	0.00200	"	"	"	"	"	
Benzene	ND	0.00200	"	"	"	"	"	U
Ethylbenzene	ND	0.00200	"	"	"	"	"	U
Toluene	ND	0.00200	"	"	"	"	"	U
Xylenes, total	0.00488	0.00200	"	"	"	"	"	
Gasoline Range Hydrocarbons	ND	0.200	"	"	"	"	"	U

Surrogate: 1,2-Dichloroethane-d4	103 %	70-130			"	"	"	
Surrogate: Toluene-d8	95.3 %	70-130			"	"	"	

Origins Laboratory, Inc.



The results in this report apply to the samples analyzed in accordance with the chain of custody document. This analytical report must be reproduced in its entirety.

Eagle Environmental Consulting, Inc.  
8000 W 44th Ave  
Wheat Ridge CO 80033

Martin C Eckert III  
Project Number: [none]  
Project: Noble - Shable #24-20

WH-SS-01@6'  
2/7/2022 12:05:00PM

Analyte	Result	Min Detection Limit	Reporting Limit	Units	Dilution	Batch	Prepared	Analyzed	Notes
---------	--------	---------------------	-----------------	-------	----------	-------	----------	----------	-------

Origins Laboratory, Inc.  
Y202170-01 (Soil)

## GBTEX+TMBs by 8260D

Surrogate: 4-Bromofluorobenzene	101 %	70-130		B2B09 16	02/09/2022	02/13/2022
---------------------------------	-------	--------	--	-------------	------------	------------

## Metals by Saturated Paste by EPA 6010

Calcium	3.08	0.499	meq/L	10	[CALC]	02/09/2022	02/10/2022
Magnesium	2.24	0.823	"	"	"	"	"
Sodium	9.08	0.435	"	"	"	"	"

## PAH by 8270D SIM

1-Methylnaphthalene	0.00933	0.00182	0.00335	mg/Kg	5	L599683	02/15/2022	02/16/2022	
2-Methylnaphthalene	0.00747	0.00323	0.00335	"	"	"	"	"	
Acenaphthene	ND	0.00152	0.00335	"	"	"	"	"	
Anthracene	ND	0.00167	0.00335	"	"	"	"	"	
Benzo(a)anthracene	ND	0.00247	0.00335	"	"	"	"	"	
Benzo(a)pyrene	ND	0.00234	0.00335	"	"	"	"	"	
Benzo(b)fluoranthene	ND	0.00293	0.00335	"	"	"	"	"	
Benzo(k)fluoranthene	ND	0.00219	0.00335	"	"	"	"	"	
Chrysene	0.00321	0.00312	0.00335	"	"	"	"	"	J
Dibenz(a,h)anthracene	ND	0.00307	0.00335	"	"	"	"	"	
Fluoranthene	ND	0.00197	0.00335	"	"	"	"	"	
Fluorene	0.00572	0.00143	0.00335	"	"	"	"	"	

Origins Laboratory, Inc.

The results in this report apply to the samples analyzed in accordance with the chain of custody document. This analytical report must be reproduced in its entirety.



Eagle Environmental Consulting, Inc.  
8000 W 44th Ave  
Wheat Ridge CO 80033

Martin C Eckert III  
Project Number: [none]  
Project: Noble - Shable #24-20

WH-SS-01@6'  
2/7/2022 12:05:00PM

Analyte	Result	Min Detection Limit	Reporting Limit	Units	Dilution	Batch	Prepared	Analyzed	Notes
---------	--------	---------------------	-----------------	-------	----------	-------	----------	----------	-------

Waypoint Analytical, Inc.  
Y202170-01 (Soil)

## PAH by 8270D SIM

Indeno(1,2,3-cd)pyrene	ND	0.00314	0.00335	mg/Kg	5	L599683	02/15/2022	02/16/2022
Naphthalene	ND	0.00242	0.00335	"	"	"	"	"
Pyrene	ND	0.00322	0.00335	"	"	"	"	"

Surrogate: 2-Fluorobiphenyl	53.5 %		33-115			"	"	"
Surrogate: 4-Terphenyl-d14	68.7 %		33-122			"	"	"
Surrogate: Nitrobenzene-d5	48.9 %		29-110			"	"	"

## pH in Soil by 9045D

pH	7.91			pH Units	1	B2B0919	02/09/2022	02/10/2022
----	------	--	--	----------	---	---------	------------	------------

## SAR by 20B Saturated Paste

SAR	5.56			SAR	1	B2B0917	02/09/2022	02/10/2022
-----	------	--	--	-----	---	---------	------------	------------

## Specific Conductance Mod. 9050A

Specific Conductance (EC)	1.49		0.00500	mmhos/cm	1	B2B0918	02/09/2022	02/10/2022
---------------------------	------	--	---------	----------	---	---------	------------	------------

## Total Metals by 6020B

Arsenic	2.41	0.0855	0.25	mg/Kg	5	L599213	02/14/2022	02/15/2022
Barium	714	0.042	0.25	"	"	"	"	"

Origins Laboratory, Inc.



The results in this report apply to the samples analyzed in accordance with the chain of custody document. This analytical report must be reproduced in its entirety.

Eagle Environmental Consulting, Inc.  
8000 W 44th Ave  
Wheat Ridge CO 80033

Martin C Eckert III  
Project Number: [none]  
Project: Noble - Shable #24-20

WH-SS-01@6'  
2/7/2022 12:05:00PM

Analyte	Result	Min Detection Limit	Reporting Limit	Units	Dilution	Batch	Prepared	Analyzed	Notes
---------	--------	---------------------	-----------------	-------	----------	-------	----------	----------	-------

Waypoint Analytical, Inc.  
Y202170-01 (Soil)

## Total Metals by 6020B

Cadmium	0.237	0.0259	0.25	mg/Kg	5	L599213	02/14/2022	02/15/2022	J
Copper	9.85	0.0806	0.25	"	"	"	"	"	
Lead	14.3	0.031	0.25	"	"	"	"	"	
Nickel	8.68	0.0633	0.25	"	"	"	"	"	
Selenium	0.32	0.103	0.25	"	"	"	"	"	
Silver	0.0908	0.0067	0.25	"	"	"	"	"	J
Zinc	48.6	0.534	2.5	"	"	"	"	"	

## Total Metals by 7196A

Chromium, Hexavalent	ND	0.488	1	mg/Kg	2	L600110	02/07/2022	02/17/2022	
----------------------	----	-------	---	-------	---	---------	------------	------------	--

Origins Laboratory, Inc.



The results in this report apply to the samples analyzed in accordance with the chain of custody document. This analytical report must be reproduced in its entirety.

Eagle Environmental Consulting, Inc.  
8000 W 44th Ave  
Wheat Ridge CO 80033

Martin C Eckert III  
Project Number: [none]  
Project: Noble - Shable #24-20

WH-SS-02@6'  
2/7/2022 12:06:00PM

Analyte	Result	Min Detection Limit	Reporting Limit	Units	Dilution	Batch	Prepared	Analyzed	Notes
---------	--------	---------------------	-----------------	-------	----------	-------	----------	----------	-------

Origins Laboratory, Inc.  
Y202170-02 (Soil)

## Boron (DTPA Sorbitol)

Boron	0.140	0.0997	mg/L	1	B2B0921	02/09/2022	02/10/2022	
-------	-------	--------	------	---	---------	------------	------------	--

## DRO/ORO by EPA 8015D

Diesel (C10-C28)	ND	25.0	mg/kg	1	B2B0904	02/09/2022	02/12/2022	U
Residual Range Organics (C28-C40)	ND	100	"	"	"	"	"	U

Surrogate: o-Terphenyl	88.4 %	50-150			"	"	"	
------------------------	--------	--------	--	--	---	---	---	--

## GBTEX+TMBs by 8260D

1,2,4-Trimethylbenzene	ND	0.00200	mg/kg	1	B2B0916	02/09/2022	02/13/2022	U
1,3,5-Trimethylbenzene	ND	0.00200	"	"	"	"	"	U
Benzene	ND	0.00200	"	"	"	"	"	U
Ethylbenzene	ND	0.00200	"	"	"	"	"	U
Toluene	ND	0.00200	"	"	"	"	"	U
Xylenes, total	ND	0.00200	"	"	"	"	"	U
Gasoline Range Hydrocarbons	ND	0.200	"	"	"	"	"	U

Surrogate: 1,2-Dichloroethane-d4	103 %	70-130			"	"	"	
----------------------------------	-------	--------	--	--	---	---	---	--

Origins Laboratory, Inc.



The results in this report apply to the samples analyzed in accordance with the chain of custody document. This analytical report must be reproduced in its entirety.

Eagle Environmental Consulting, Inc.  
8000 W 44th Ave  
Wheat Ridge CO 80033

Martin C Eckert III  
Project Number: [none]  
Project: Noble - Shable #24-20

WH-SS-02@6'  
2/7/2022 12:06:00PM

Analyte	Result	Min Detection Limit	Reporting Limit	Units	Dilution	Batch	Prepared	Analyzed	Notes
---------	--------	---------------------	-----------------	-------	----------	-------	----------	----------	-------

Origins Laboratory, Inc.  
Y202170-02 (Soil)

## GBTEX+TMBs by 8260D

Surrogate: Toluene-d8	95.1 %	70-130	B2B09 16	02/09/2022	02/13/2022
Surrogate: 4-Bromofluorobenzene	101 %	70-130	"	"	"

## Metals by Saturated Paste by EPA 6010

Calcium	1.23	0.499	meq/L	10	[CALC]	02/09/2022	02/10/2022
Magnesium	1.09	0.823	"	"	"	"	"
Sodium	3.48	0.435	"	"	"	"	"

## PAH by 8270D SIM

1-Methylnaphthalene	ND	0.000364	0.00067	mg/Kg	1	L599683	02/15/2022	02/16/2022
2-Methylnaphthalene	ND	0.000645	0.00067	"	"	"	"	"
Acenaphthene	ND	0.000304	0.00067	"	"	"	"	"
Anthracene	ND	0.000334	0.00067	"	"	"	"	"
Benzo(a)anthracene	ND	0.000493	0.00067	"	"	"	"	"
Benzo(a)pyrene	ND	0.000468	0.00067	"	"	"	"	"
Benzo(b)fluoranthene	ND	0.000585	0.00067	"	"	"	"	"
Benzo(k)fluoranthene	ND	0.000437	0.00067	"	"	"	"	"
Chrysene	ND	0.000624	0.00067	"	"	"	"	"
Dibenz(a,h)anthracene	ND	0.000614	0.00067	"	"	"	"	"
Fluoranthene	ND	0.000394	0.00067	"	"	"	"	"

Origins Laboratory, Inc.

The results in this report apply to the samples analyzed in accordance with the chain of custody document. This analytical report must be reproduced in its entirety.



Eagle Environmental Consulting, Inc.  
8000 W 44th Ave  
Wheat Ridge CO 80033

Martin C Eckert III  
Project Number: [none]  
Project: Noble - Shable #24-20

**WH-SS-02@6'**  
**2/7/2022 12:06:00PM**

Analyte	Result	Min Detection Limit	Reporting Limit	Units	Dilution	Batch	Prepared	Analyzed	Notes
---------	--------	---------------------	-----------------	-------	----------	-------	----------	----------	-------

**Waypoint Analytical, Inc.**  
**Y202170-02 (Soil)**

**PAH by 8270D SIM**

Fluorene	ND	0.000286	0.00067	mg/Kg	1	L599683	02/15/2022	02/16/2022
Indeno(1,2,3-cd)pyrene	ND	0.000627	0.00067	"	"	"	"	"
Naphthalene	ND	0.000484	0.00067	"	"	"	"	"
Pyrene	ND	0.000643	0.00067	"	"	"	"	"

Surrogate: 2-Fluorobiphenyl	58.1 %		33-115			"	"	"
Surrogate: 4-Terphenyl-d14	62.4 %		33-122			"	"	"
Surrogate: Nitrobenzene-d5	52.9 %		29-110			"	"	"

**pH in Soil by 9045D**

pH	8.12			pH Units	1	B2B0919	02/09/2022	02/10/2022
----	------	--	--	----------	---	---------	------------	------------

**SAR by 20B Saturated Paste**

SAR	3.23			SAR	1	B2B0917	02/09/2022	02/10/2022
-----	------	--	--	-----	---	---------	------------	------------

**Specific Conductance Mod. 9050A**

Specific Conductance (EC)	0.574		0.00500	mmhos/cm	1	B2B0918	02/09/2022	02/10/2022
---------------------------	-------	--	---------	----------	---	---------	------------	------------

Origins Laboratory, Inc.



The results in this report apply to the samples analyzed in accordance with the chain of custody document. This analytical report must be reproduced in its entirety.

Eagle Environmental Consulting, Inc.  
8000 W 44th Ave  
Wheat Ridge CO 80033

Martin C Eckert III  
Project Number: [none]  
Project: Noble - Shable #24-20

WH-SS-03@6'  
2/7/2022 12:07:00PM

Analyte	Result	Min Detection Limit	Reporting Limit	Units	Dilution	Batch	Prepared	Analyzed	Notes
---------	--------	---------------------	-----------------	-------	----------	-------	----------	----------	-------

Origins Laboratory, Inc.  
Y202170-03 (Soil)

**Boron (DTPA Sorbitol)**

Boron	0.340	0.0999	mg/L	1	B2B0921	02/09/2022	02/10/2022	
-------	-------	--------	------	---	---------	------------	------------	--

**DRO/ORO by EPA 8015D**

Diesel (C10-C28)	ND	25.0	mg/kg	1	B2B0904	02/09/2022	02/12/2022	U
Residual Range Organics (C28-C40)	ND	100	"	"	"	"	"	U

Surrogate: o-Terphenyl	89.1 %	50-150			"	"	"	
------------------------	--------	--------	--	--	---	---	---	--

**GBTEX+TMBs by 8260D**

1,2,4-Trimethylbenzene	ND	0.00200	mg/kg	1	B2B0916	02/09/2022	02/13/2022	U
1,3,5-Trimethylbenzene	ND	0.00200	"	"	"	"	"	U
Benzene	ND	0.00200	"	"	"	"	"	U
Ethylbenzene	ND	0.00200	"	"	"	"	"	U
Toluene	ND	0.00200	"	"	"	"	"	U
Xylenes, total	ND	0.00200	"	"	"	"	"	U
Gasoline Range Hydrocarbons	ND	0.200	"	"	"	"	"	U

Surrogate: 1,2-Dichloroethane-d4	107 %	70-130			"	"	"	
----------------------------------	-------	--------	--	--	---	---	---	--

Origins Laboratory, Inc.



The results in this report apply to the samples analyzed in accordance with the chain of custody document. This analytical report must be reproduced in its entirety.

Eagle Environmental Consulting, Inc.  
8000 W 44th Ave  
Wheat Ridge CO 80033

Martin C Eckert III  
Project Number: [none]  
Project: Noble - Shable #24-20

WH-SS-03@6'  
2/7/2022 12:07:00PM

Analyte	Result	Min Detection Limit	Reporting Limit	Units	Dilution	Batch	Prepared	Analyzed	Notes
---------	--------	---------------------	-----------------	-------	----------	-------	----------	----------	-------

Origins Laboratory, Inc.  
Y202170-03 (Soil)

## GBTEX+TMBs by 8260D

Surrogate: Toluene-d8	95.0 %	70-130	B2B09 16	02/09/2022	02/13/2022
Surrogate: 4-Bromofluorobenzene	99.1 %	70-130	"	"	"

## Metals by Saturated Paste by EPA 6010

Calcium	0.813	0.499	meq/L	10	[CALC]	02/09/2022	02/10/2022
Magnesium	0.955	0.823	"	"	"	"	"
Sodium	7.53	0.435	"	"	"	"	"

## PAH by 8270D SIM

1-Methylnaphthalene	ND	0.000364	0.00067	mg/Kg	1	L599814	02/16/2022	02/17/2022
2-Methylnaphthalene	ND	0.000645	0.00067	"	"	"	"	"
Acenaphthene	ND	0.000304	0.00067	"	"	"	"	"
Anthracene	ND	0.000334	0.00067	"	"	"	"	"
Benzo(a)anthracene	ND	0.000493	0.00067	"	"	"	"	"
Benzo(a)pyrene	ND	0.000468	0.00067	"	"	"	"	"
Benzo(b)fluoranthene	ND	0.000585	0.00067	"	"	"	"	"
Benzo(k)fluoranthene	ND	0.000437	0.00067	"	"	"	"	"
Chrysene	ND	0.000624	0.00067	"	"	"	"	"
Dibenz(a,h)anthracene	ND	0.000614	0.00067	"	"	"	"	"
Fluoranthene	ND	0.000394	0.00067	"	"	"	"	"

Origins Laboratory, Inc.

The results in this report apply to the samples analyzed in accordance with the chain of custody document. This analytical report must be reproduced in its entirety.

Eagle Environmental Consulting, Inc.  
8000 W 44th Ave  
Wheat Ridge CO 80033

Martin C Eckert III  
Project Number: [none]  
Project: Noble - Shable #24-20

WH-SS-03@6'  
2/7/2022 12:07:00PM

Analyte	Result	Min Detection Limit	Reporting Limit	Units	Dilution	Batch	Prepared	Analyzed	Notes
---------	--------	---------------------	-----------------	-------	----------	-------	----------	----------	-------

Waypoint Analytical, Inc.  
Y202170-03 (Soil)

## PAH by 8270D SIM

Fluorene	ND	0.000286	0.00067	mg/Kg	1	L599814	02/16/2022	02/17/2022
Indeno(1,2,3-cd)pyrene	ND	0.000627	0.00067	"	"	"	"	"
Naphthalene	ND	0.000484	0.00067	"	"	"	"	"
Pyrene	ND	0.000643	0.00067	"	"	"	"	"

Surrogate: 2-Fluorobiphenyl	53.2 %	33-115	"	"	"
Surrogate: 4-Terphenyl-d14	64.3 %	33-122	"	"	"
Surrogate: Nitrobenzene-d5	49.8 %	29-110	"	"	"

## pH in Soil by 9045D

pH	8.15	pH Units	1	B2B0919	02/09/2022	02/10/2022
----	------	----------	---	---------	------------	------------

## SAR by 20B Saturated Paste

SAR	8.01	SAR	1	B2B0917	02/09/2022	02/10/2022
-----	------	-----	---	---------	------------	------------

## Specific Conductance Mod. 9050A

Specific Conductance (EC)	0.858	0.00500	mmhos/cm	1	B2B0918	02/09/2022	02/10/2022
---------------------------	-------	---------	----------	---	---------	------------	------------

Origins Laboratory, Inc.



The results in this report apply to the samples analyzed in accordance with the chain of custody document. This analytical report must be reproduced in its entirety.



Eagle Environmental Consulting, Inc.  
8000 W 44th Ave  
Wheat Ridge CO 80033

Martin C Eckert III  
Project Number: [none]  
Project: Noble - Shable #24-20

WH-SS-04@6'  
2/7/2022 12:08:00PM

Analyte	Result	Min Detection Limit	Reporting Limit	Units	Dilution	Batch	Prepared	Analyzed	Notes
---------	--------	---------------------	-----------------	-------	----------	-------	----------	----------	-------

Origins Laboratory, Inc.  
Y202170-04 (Soil)

## Boron (DTPA Sorbitol)

Boron	0.139	0.0994	mg/L	1	B2B0921	02/09/2022	02/10/2022	
-------	-------	--------	------	---	---------	------------	------------	--

## DRO/ORO by EPA 8015D

Diesel (C10-C28)	ND	25.0	mg/kg	1	B2B0904	02/09/2022	02/12/2022	U
Residual Range Organics (C28-C40)	ND	100	"	"	"	"	"	U

Surrogate: o-Terphenyl	73.8 %	50-150			"	"	"	
------------------------	--------	--------	--	--	---	---	---	--

## GBTEX+TMBs by 8260D

1,2,4-Trimethylbenzene	ND	0.00200	mg/kg	1	B2B0916	02/09/2022	02/13/2022	U
1,3,5-Trimethylbenzene	ND	0.00200	"	"	"	"	"	U
Benzene	ND	0.00200	"	"	"	"	"	U
Ethylbenzene	ND	0.00200	"	"	"	"	"	U
Toluene	ND	0.00200	"	"	"	"	"	U
Xylenes, total	ND	0.00200	"	"	"	"	"	U
Gasoline Range Hydrocarbons	ND	0.200	"	"	"	"	"	U

Surrogate: 1,2-Dichloroethane-d4	106 %	70-130			"	"	"	
----------------------------------	-------	--------	--	--	---	---	---	--

Origins Laboratory, Inc.



The results in this report apply to the samples analyzed in accordance with the chain of custody document. This analytical report must be reproduced in its entirety.

Eagle Environmental Consulting, Inc.  
8000 W 44th Ave  
Wheat Ridge CO 80033

Martin C Eckert III  
Project Number: [none]  
Project: Noble - Shable #24-20

WH-SS-04@6'  
2/7/2022 12:08:00PM

Analyte	Result	Min Detection Limit	Reporting Limit	Units	Dilution	Batch	Prepared	Analyzed	Notes
---------	--------	---------------------	-----------------	-------	----------	-------	----------	----------	-------

Origins Laboratory, Inc.  
Y202170-04 (Soil)

## GBTEX+TMBs by 8260D

Surrogate: Toluene-d8	94.4 %	70-130	B2B09 16	02/09/2022	02/13/2022
Surrogate: 4-Bromofluorobenzene	101 %	70-130	"	"	"

## Metals by Saturated Paste by EPA 6010

Calcium	1.37	0.499	meq/L	10	[CALC]	02/09/2022	02/10/2022
Magnesium	1.11	0.823	"	"	"	"	"
Sodium	3.31	0.435	"	"	"	"	"

## PAH by 8270D SIM

1-Methylnaphthalene	ND	0.000364	0.00067	mg/Kg	1	L599814	02/16/2022	02/17/2022
2-Methylnaphthalene	ND	0.000645	0.00067	"	"	"	"	"
Acenaphthene	ND	0.000304	0.00067	"	"	"	"	"
Anthracene	ND	0.000334	0.00067	"	"	"	"	"
Benzo(a)anthracene	ND	0.000493	0.00067	"	"	"	"	"
Benzo(a)pyrene	ND	0.000468	0.00067	"	"	"	"	"
Benzo(b)fluoranthene	ND	0.000585	0.00067	"	"	"	"	"
Benzo(k)fluoranthene	ND	0.000437	0.00067	"	"	"	"	"
Chrysene	ND	0.000624	0.00067	"	"	"	"	"
Dibenz(a,h)anthracene	ND	0.000614	0.00067	"	"	"	"	"
Fluoranthene	ND	0.000394	0.00067	"	"	"	"	"

Origins Laboratory, Inc.

The results in this report apply to the samples analyzed in accordance with the chain of custody document. This analytical report must be reproduced in its entirety.

Eagle Environmental Consulting, Inc.  
8000 W 44th Ave  
Wheat Ridge CO 80033

Martin C Eckert III  
Project Number: [none]  
Project: Noble - Shable #24-20

WH-SS-04@6'  
2/7/2022 12:08:00PM

Analyte	Result	Min Detection Limit	Reporting Limit	Units	Dilution	Batch	Prepared	Analyzed	Notes
---------	--------	---------------------	-----------------	-------	----------	-------	----------	----------	-------

Waypoint Analytical, Inc.  
Y202170-04 (Soil)

## PAH by 8270D SIM

Fluorene	ND	0.000286	0.00067	mg/Kg	1	L599814	02/16/2022	02/17/2022
Indeno(1,2,3-cd)pyrene	ND	0.000627	0.00067	"	"	"	"	"
Naphthalene	ND	0.000484	0.00067	"	"	"	"	"
Pyrene	ND	0.000643	0.00067	"	"	"	"	"

Surrogate: 2-Fluorobiphenyl	49.2 %		33-115			"	"	"
Surrogate: 4-Terphenyl-d14	62.6 %		33-122			"	"	"
Surrogate: Nitrobenzene-d5	47.7 %		29-110			"	"	"

## pH in Soil by 9045D

pH	8.03			pH Units	1	B2B0919	02/09/2022	02/10/2022
----	------	--	--	----------	---	---------	------------	------------

## SAR by 20B Saturated Paste

SAR	2.97			SAR	1	B2B0917	02/09/2022	02/10/2022
-----	------	--	--	-----	---	---------	------------	------------

## Specific Conductance Mod. 9050A

Specific Conductance (EC)	0.565		0.00500	mmhos/cm	1	B2B0918	02/09/2022	02/10/2022
---------------------------	-------	--	---------	----------	---	---------	------------	------------

Origins Laboratory, Inc.



The results in this report apply to the samples analyzed in accordance with the chain of custody document. This analytical report must be reproduced in its entirety.

Eagle Environmental Consulting, Inc.  
8000 W 44th Ave  
Wheat Ridge CO 80033

Martin C Eckert III  
Project Number: [none]  
Project: Noble - Shable #24-20

WH-FS-01@7'  
2/7/2022 12:10:00PM

Analyte	Result	Min Detection Limit	Reporting Limit	Units	Dilution	Batch	Prepared	Analyzed	Notes
---------	--------	---------------------	-----------------	-------	----------	-------	----------	----------	-------

Origins Laboratory, Inc.  
Y202170-05 (Soil)

**Boron (DTPA Sorbitol)**

Boron	0.492	0.0984	mg/L	1	B2B0921	02/09/2022	02/10/2022	
-------	-------	--------	------	---	---------	------------	------------	--

**DRO/ORO by EPA 8015D**

Diesel (C10-C28)	ND	25.0	mg/kg	1	B2B0904	02/09/2022	02/12/2022	U
Residual Range Organics (C28-C40)	ND	100	"	"	"	"	"	U

Surrogate: o-Terphenyl	93.8 %	50-150			"	"	"	
------------------------	--------	--------	--	--	---	---	---	--

**GBTEX+TMBs by 8260D**

1,2,4-Trimethylbenzene	ND	0.00200	mg/kg	1	B2B0916	02/09/2022	02/13/2022	U
1,3,5-Trimethylbenzene	0.00414	0.00200	"	"	"	"	"	
Benzene	ND	0.00200	"	"	"	"	"	U
Ethylbenzene	ND	0.00200	"	"	"	"	"	U
Toluene	ND	0.00200	"	"	"	"	"	U
Xylenes, total	ND	0.00200	"	"	"	"	"	U
Gasoline Range Hydrocarbons	0.326	0.200	"	"	"	"	"	

Surrogate: 1,2-Dichloroethane-d4	106 %	70-130			"	"	"	
Surrogate: Toluene-d8	94.0 %	70-130			"	"	"	

Origins Laboratory, Inc.



The results in this report apply to the samples analyzed in accordance with the chain of custody document. This analytical report must be reproduced in its entirety.



Eagle Environmental Consulting, Inc.  
8000 W 44th Ave  
Wheat Ridge CO 80033

Martin C Eckert III  
Project Number: [none]  
Project: Noble - Shable #24-20

WH-FS-01@7'  
2/7/2022 12:10:00PM

Analyte	Result	Min Detection Limit	Reporting Limit	Units	Dilution	Batch	Prepared	Analyzed	Notes
---------	--------	---------------------	-----------------	-------	----------	-------	----------	----------	-------

Origins Laboratory, Inc.  
Y202170-05 (Soil)

## GBTEX+TMBs by 8260D

Surrogate: 4-Bromofluorobenzene	102 %	70-130	B2B09 16	02/09/2022	02/13/2022
---------------------------------	-------	--------	-------------	------------	------------

## Metals by Saturated Paste by EPA 6010

Calcium	1.43	0.499	meq/L	10	[CALC]	02/09/2022	02/10/2022
Magnesium	1.06	0.823	"	"	"	"	"
Sodium	4.54	0.435	"	"	"	"	"

## PAH by 8270D SIM

1-Methylnaphthalene	0.000679	0.000364	0.00067	mg/Kg	1	L599814	02/16/2022	02/17/2022
2-Methylnaphthalene	0.00104	0.000645	0.00067	"	"	"	"	"
Acenaphthene	ND	0.000304	0.00067	"	"	"	"	"
Anthracene	ND	0.000334	0.00067	"	"	"	"	"
Benzo(a)anthracene	ND	0.000493	0.00067	"	"	"	"	"
Benzo(a)pyrene	ND	0.000468	0.00067	"	"	"	"	"
Benzo(b)fluoranthene	ND	0.000585	0.00067	"	"	"	"	"
Benzo(k)fluoranthene	ND	0.000437	0.00067	"	"	"	"	"
Chrysene	ND	0.000624	0.00067	"	"	"	"	"
Dibenz(a,h)anthracene	ND	0.000614	0.00067	"	"	"	"	"
Fluoranthene	ND	0.000394	0.00067	"	"	"	"	"
Fluorene	ND	0.000286	0.00067	"	"	"	"	"

Origins Laboratory, Inc.

The results in this report apply to the samples analyzed in accordance with the chain of custody document. This analytical report must be reproduced in its entirety.

Eagle Environmental Consulting, Inc.  
8000 W 44th Ave  
Wheat Ridge CO 80033

Martin C Eckert III  
Project Number: [none]  
Project: Noble - Shable #24-20

WH-FS-01@7'  
2/7/2022 12:10:00PM

Analyte	Result	Min Detection Limit	Reporting Limit	Units	Dilution	Batch	Prepared	Analyzed	Notes
---------	--------	---------------------	-----------------	-------	----------	-------	----------	----------	-------

Waypoint Analytical, Inc.  
Y202170-05 (Soil)

## PAH by 8270D SIM

Indeno(1,2,3-cd)pyrene	ND	0.000627	0.00067	mg/Kg	1	L599814	02/16/2022	02/17/2022
Naphthalene	ND	0.000484	0.00067	"	"	"	"	"
Pyrene	ND	0.000643	0.00067	"	"	"	"	"

Surrogate: 2-Fluorobiphenyl	48.2 %		33-115			"	"	"
Surrogate: 4-Terphenyl-d14	60.2 %		33-122			"	"	"
Surrogate: Nitrobenzene-d5	45.5 %		29-110			"	"	"

## pH in Soil by 9045D

pH	8.46			pH Units	1	B2B0919	02/09/2022	02/10/2022
----	------	--	--	----------	---	---------	------------	------------

## SAR by 20B Saturated Paste

SAR	4.06			SAR	1	B2B0917	02/09/2022	02/10/2022
-----	------	--	--	-----	---	---------	------------	------------

## Specific Conductance Mod. 9050A

Specific Conductance (EC)	0.723		0.00500	mmhos/cm	1	B2B0918	02/09/2022	02/10/2022
---------------------------	-------	--	---------	----------	---	---------	------------	------------

Origins Laboratory, Inc.



The results in this report apply to the samples analyzed in accordance with the chain of custody document. This analytical report must be reproduced in its entirety.

Eagle Environmental Consulting, Inc.  
8000 W 44th Ave  
Wheat Ridge CO 80033

Martin C Eckert III  
Project Number: [none]  
Project: Noble - Shable #24-20

## Extractable Petroleum Hydrocarbons by 8015D - Quality Control Origins Laboratory, Inc.

Analyte	Result	Reporting Limit	Units	Spike Level	Source Result	%REC	%REC Limits	RPD	RPD Limit	Notes
Batch B2B0904 - EPA 3550B										
Blank (B2B0904-BLK1)					Prepared: 02/09/2022 Analyzed: 02/10/2022					
Diesel (C10-C28)	ND	25.0	mg/kg							U
Residual Range Organics (C28-C40)	ND	100	"							U
Surrogate: o-Terphenyl	27		"	24.9		107	50-150			

Origins Laboratory, Inc.



The results in this report apply to the samples analyzed in accordance with the chain of custody document. This analytical report must be reproduced in its entirety.

Eagle Environmental Consulting, Inc.  
8000 W 44th Ave  
Wheat Ridge CO 80033

Martin C Eckert III  
Project Number: [none]  
Project: Noble - Shable #24-20

Extractable Petroleum Hydrocarbons by 8015D - Quality Control  
Origins Laboratory, Inc.

Analyte	Result	Reporting Limit	Units	Spike Level	Source Result	%REC	%REC Limits	RPD	RPD Limit	Notes
Batch B2B0904 - EPA 3550B										
LCS (B2B0904-BS1)					Prepared: 02/09/2022 Analyzed: 02/10/2022					
Diesel (C10-C28)	1080	50.0	mg/kg	1000		108	70-130			
Residual Range Organics (C28-C40)	865	200	"	1000		86.5	70-130			
Surrogate: o-Terphenyl	57		"	49.8		114	50-150			

Origins Laboratory, Inc.



The results in this report apply to the samples analyzed in accordance with the chain of custody document. This analytical report must be reproduced in its entirety.



Eagle Environmental Consulting, Inc.  
8000 W 44th Ave  
Wheat Ridge CO 80033

Martin C Eckert III  
Project Number: [none]  
Project: Noble - Shable #24-20

Extractable Petroleum Hydrocarbons by 8015D - Quality Control  
Origins Laboratory, Inc.

Analyte	Result	Reporting Limit	Units	Spike Level	Source Result	%REC	%REC Limits	RPD	RPD Limit	Notes
---------	--------	-----------------	-------	-------------	---------------	------	-------------	-----	-----------	-------

Batch B2B0904 - EPA 3550B

Matrix Spike (B2B0904-MS1)		Source: Y202157-01			Prepared: 02/09/2022 Analyzed: 02/10/2022					
Diesel (C10-C28)	1100	50.0	mg/kg	1000	ND	110	70-130			
Residual Range Organics (C28-C40)	996	200	"	1000	ND	99.6	70-130			
Surrogate: o-Terphenyl	65		"	49.8		131	50-150			

Origins Laboratory, Inc.



The results in this report apply to the samples analyzed in accordance with the chain of custody document. This analytical report must be reproduced in its entirety.

Eagle Environmental Consulting, Inc.  
8000 W 44th Ave  
Wheat Ridge CO 80033

Martin C Eckert III  
Project Number: [none]  
Project: Noble - Shable #24-20

## Extractable Petroleum Hydrocarbons by 8015D - Quality Control Origins Laboratory, Inc.

Analyte	Result	Reporting Limit	Units	Spike Level	Source Result	%REC	%REC Limits	RPD	RPD Limit	Notes
Batch B2B0904 - EPA 3550B										
Matrix Spike Dup (B2B0904-MSD1)		Source: Y202157-01			Prepared: 02/09/2022 Analyzed: 02/10/2022					
Diesel (C10-C28)	1060	50.0	mg/kg	1000	ND	106	70-130	3.68	35	
Residual Range Organics (C28-C40)	931	200	"	1000	ND	93.1	70-130	6.79	35	
Surrogate: o-Terphenyl	52		"	49.8		104	50-150			

Origins Laboratory, Inc.



The results in this report apply to the samples analyzed in accordance with the chain of custody document. This analytical report must be reproduced in its entirety.

Eagle Environmental Consulting, Inc.  
8000 W 44th Ave  
Wheat Ridge CO 80033

Martin C Eckert III  
Project Number: [none]  
Project: Noble - Shable #24-20

## Extractable Petroleum Hydrocarbons by 8015D - Quality Control

### Origins Laboratory, Inc.

Analyte	Result	Reporting Limit	Units	Spike Level	Source Result	%REC	%REC Limits	RPD	RPD Limit	Notes
<b>Batch B2B0916 - EPA 5030 (soil)</b>										
<b>Blank (B2B0916-BLK1)</b>					Prepared: 02/09/2022 Analyzed: 02/13/2022					
1,2,4-Trimethylbenzene	ND	0.00200	mg/kg							U
1,3,5-Trimethylbenzene	ND	0.00200	"							U
Benzene	ND	0.00200	"							U
Ethylbenzene	ND	0.00200	"							U
Naphthalene	ND	0.0100	"							U
Toluene	ND	0.00200	"							U
Xylenes, total	ND	0.00200	"							U
Gasoline Range Hydrocarbons	ND	0.200	"							U
Surrogate: 1,2-Dichloroethane-d4	0.12		"	0.125		99.9	70-130			
Surrogate: Toluene-d8	0.12		"	0.125		96.4	70-130			
Surrogate: 4-Bromofluorobenzene	0.13		"	0.125		100	70-130			

Origins Laboratory, Inc.



The results in this report apply to the samples analyzed in accordance with the chain of custody document. This analytical report must be reproduced in its entirety.

Eagle Environmental Consulting, Inc.  
8000 W 44th Ave  
Wheat Ridge CO 80033

Martin C Eckert III  
Project Number: [none]  
Project: Noble - Shable #24-20

**Volatile Organic Compounds by GC/MS SW846 8260D - Quality Control**  
**Origins Laboratory, Inc.**

Analyte	Result	Reporting Limit	Units	Spike Level	Source Result	%REC	%REC Limits	RPD	RPD Limit	Notes
<b>Batch B2B0916 - EPA 5030 (soil)</b>										
<b>LCS (B2B0916-BS1)</b>					Prepared: 02/09/2022 Analyzed: 02/13/2022					
1,2,4-Trimethylbenzene	0.114	0.00200	mg/kg	0.100		114	70-130			
1,3,5-Trimethylbenzene	0.114	0.00200	"	0.100		114	70-130			
Benzene	0.115	0.00200	"	0.100		115	70-130			
Ethylbenzene	0.110	0.00200	"	0.100		110	70-130			
Naphthalene	0.102	0.0100	"	0.100		102	70-130			
Toluene	0.108	0.00200	"	0.100		108	70-130			
o-Xylene	0.109	0.00200	"	0.100		109	70-130			
m,p-Xylene	0.222	0.00400	"	0.200		111	70-130			
Surrogate: 1,2-Dichloroethane-d4	0.12		"	0.125		98.5	70-130			
Surrogate: Toluene-d8	0.12		"	0.125		96.7	70-130			
Surrogate: 4-Bromofluorobenzene	0.12		"	0.125		99.9	70-130			

Origins Laboratory, Inc.



*The results in this report apply to the samples analyzed in accordance with the chain of custody document. This analytical report must be reproduced in its entirety.*



Eagle Environmental Consulting, Inc.  
8000 W 44th Ave  
Wheat Ridge CO 80033

Martin C Eckert III  
Project Number: [none]  
Project: Noble - Shable #24-20

**Volatile Organic Compounds by GC/MS SW846 8260D - Quality Control**  
**Origins Laboratory, Inc.**

Analyte	Result	Reporting Limit	Units	Spike Level	Source Result	%REC	%REC Limits	RPD	RPD Limit	Notes
<b>Batch B2B0916 - EPA 5030 (soil)</b>										
<b>Matrix Spike (B2B0916-MS1)</b>		<b>Source: Y201542-05</b>			Prepared: 02/09/2022 Analyzed: 02/13/2022					
1,2,4-Trimethylbenzene	0.0992	0.00200	mg/kg	0.100	0.000980	98.2	70-130			
1,3,5-Trimethylbenzene	0.0998	0.00200	"	0.100	ND	99.8	70-130			
Benzene	0.101	0.00200	"	0.100	ND	101	70-130			
Ethylbenzene	0.0967	0.00200	"	0.100	ND	96.7	70-130			
Naphthalene	0.0823	0.0100	"	0.100	0.00600	76.3	70-130			
Toluene	0.0940	0.00200	"	0.100	ND	94.0	70-130			
o-Xylene	0.0959	0.00200	"	0.100	ND	95.9	70-130			
m,p-Xylene	0.196	0.00400	"	0.200	0.000600	97.7	70-130			
Surrogate: 1,2-Dichloroethane-d4	0.12		"	0.125		99.5	70-130			
Surrogate: Toluene-d8	0.12		"	0.125		96.5	70-130			
Surrogate: 4-Bromofluorobenzene	0.13		"	0.125		101	70-130			

Origins Laboratory, Inc.



*The results in this report apply to the samples analyzed in accordance with the chain of custody document. This analytical report must be reproduced in its entirety.*

Eagle Environmental Consulting, Inc.  
8000 W 44th Ave  
Wheat Ridge CO 80033

Martin C Eckert III  
Project Number: [none]  
Project: Noble - Shable #24-20

**Volatile Organic Compounds by GC/MS SW846 8260D - Quality Control**  
**Origins Laboratory, Inc.**

Analyte	Result	Reporting Limit	Units	Spike Level	Source Result	%REC	%REC Limits	RPD	RPD Limit	Notes
<b>Batch B2B0916 - EPA 5030 (soil)</b>										
<b>Matrix Spike Dup (B2B0916-MSD1)</b>		<b>Source: Y201542-05</b>			Prepared: 02/09/2022 Analyzed: 02/13/2022					
1,2,4-Trimethylbenzene	0.103	0.00200	mg/kg	0.100	0.000980	102	70-130	3.88	20	
1,3,5-Trimethylbenzene	0.103	0.00200	"	0.100	ND	103	70-130	2.84	20	
Benzene	0.104	0.00200	"	0.100	ND	104	70-130	2.94	20	
Ethylbenzene	0.0980	0.00200	"	0.100	ND	98.0	70-130	1.31	20	
Naphthalene	0.0932	0.0100	"	0.100	0.00600	87.2	70-130	12.5	20	
Toluene	0.0974	0.00200	"	0.100	ND	97.4	70-130	3.62	20	
o-Xylene	0.0979	0.00200	"	0.100	ND	97.9	70-130	2.08	20	
m,p-Xylene	0.200	0.00400	"	0.200	0.000600	99.6	70-130	1.92	20	
Surrogate: 1,2-Dichloroethane-d4	0.13		"	0.125		100	70-130			
Surrogate: Toluene-d8	0.12		"	0.125		97.2	70-130			
Surrogate: 4-Bromofluorobenzene	0.12		"	0.125		99.4	70-130			

Origins Laboratory, Inc.



The results in this report apply to the samples analyzed in accordance with the chain of custody document. This analytical report must be reproduced in its entirety.

Eagle Environmental Consulting, Inc.  
8000 W 44th Ave  
Wheat Ridge CO 80033

Martin C Eckert III  
Project Number: [none]  
Project: Noble - Shable #24-20

**Volatile Organic Compounds by GC/MS SW846 8260D - Quality Control**  
**Origins Laboratory, Inc.**

Analyte	Result	Reporting Limit	Units	Spike Level	Source Result	%REC	%REC Limits	RPD	RPD Limit	Notes
---------	--------	-----------------	-------	-------------	---------------	------	-------------	-----	-----------	-------

**Saturated Paste - Quality Control**  
**Origins Laboratory, Inc.**

Analyte	Result	Reporting Limit	Units	Spike Level	Source Result	%REC	%REC Limits	RPD	RPD Limit	Notes
---------	--------	-----------------	-------	-------------	---------------	------	-------------	-----	-----------	-------

**Batch B2B0918 - NO PREP**

**Blank (B2B0918-BLK1)**

Prepared: 02/09/2022 Analyzed: 02/10/2022

Specific Conductance (EC) 0.000900 0.00500 mmhos/cm

**Duplicate (B2B0918-DUP1)**

**Source: Y202156-03**

Prepared: 02/09/2022 Analyzed: 02/10/2022

Specific Conductance (EC) 0.563 0.00500 mmhos/cm 0.588 4.34 25

**Batch B2B0919 - NO PREP**

**Duplicate (B2B0919-DUP1)**

**Source: Y202156-03**

Prepared: 02/09/2022 Analyzed: 02/10/2022

pH 7.70 pH Units 7.98 3.57 25

Origins Laboratory, Inc.

*The results in this report apply to the samples analyzed in accordance with the chain of custody document. This analytical report must be reproduced in its entirety.*

Eagle Environmental Consulting, Inc.  
8000 W 44th Ave  
Wheat Ridge CO 80033

Martin C Eckert III  
Project Number: [none]  
Project: Noble - Shable #24-20

**PAH by 8270D SIM - Quality Control**  
**Waypoint Analytical, Inc.**

Analyte	Result	Reporting Limit	Units	Spike Level	Source Result	%REC	%REC Limits	RPD	RPD Limit	Notes
---------	--------	-----------------	-------	-------------	---------------	------	-------------	-----	-----------	-------

**Batch L599683 - 3550B**

MSD (L 91328-MSD-L599683)		Source: 91328			Prepared: 02/15/2022 Analyzed: 02/16/2022					
Dibenz(a,h)anthracene	0.088	0.00307	mg/Kg	0.164	<0.00307	53.6	30-130	30.7	30	
Naphthalene	0.102	0.00242	"	0.164	<0.00242	62.1	30-130	8.5	30	
Indeno(1,2,3-cd)pyrene	0.0783	0.00314	"	0.164	<0.00314	47.7	30-130	33.6	30	
Fluorene	0.135	0.00143	"	0.164	0.0191	70.6	30-130	4.5	30	
1-Methylnaphthalene	0.169	0.00182	"	0.164	0.0528	70.8	30-130	7.3	30	
Fluoranthene	0.121	0.00197	"	0.164	<0.00197	73.7	30-130	3.2	30	
Pyrene	0.12	0.00322	"	0.164	<0.00322	73.1	30-130	2.4	30	
Chrysene	0.119	0.00312	"	0.164	0.00463	69.7	30-130	3.3	30	
Benzo(b)fluoranthene	0.117	0.00293	"	0.164	<0.00293	71.3	30-130	8.9	30	
Benzo(a)anthracene	0.113	0.00247	"	0.164	<0.00247	68.9	30-130	0.8	30	
Anthracene	0.111	0.00167	"	0.164	<0.00167	67.6	30-130	0.9	30	
Acenaphthene	0.115	0.00152	"	0.164	0.00557	66.7	30-130	6.2	30	
Benzo(k)fluoranthene	0.103	0.00219	"	0.164	<0.00219	62.8	30-130	11	30	
2-Methylnaphthalene	0.118	0.00323	"	0.164	0.0122	64.5	30-130	7	30	
Benzo(a)pyrene	0.113	0.00234	"	0.164	<0.00234	68.9	30-130	4.3	30	
Surrogate: Nitrobenzene-d5	53.1		"	0.329	167	53.1	29-110			
Surrogate: 4-Terphenyl-d14	67.7		"	0.329	220	67.7	33-122			
Surrogate: 2-Fluorobiphenyl	60.7		"	0.329	191	60.7	33-115			

MS (L 91328-MS-L599683)		Source: 91328			Prepared: 02/15/2022 Analyzed: 02/16/2022					
Benzo(k)fluoranthene	0.115	0.00219	mg/Kg	0.164	<0.00219	70.1	30-130			
Naphthalene	0.0936	0.00242	"	0.164	<0.00242	57	30-130			
Indeno(1,2,3-cd)pyrene	0.11	0.00314	"	0.164	<0.00314	67	30-130			
Fluorene	0.129	0.00143	"	0.164	0.0191	67	30-130			
Fluoranthene	0.125	0.00197	"	0.164	<0.00197	76.2	30-130			
Chrysene	0.123	0.00312	"	0.164	0.00463	72.1	30-130			
Benzo(b)fluoranthene	0.128	0.00293	"	0.164	<0.00293	78	30-130			

Origins Laboratory, Inc.

The results in this report apply to the samples analyzed in accordance with the chain of custody document. This analytical report must be reproduced in its entirety.



Eagle Environmental Consulting, Inc.  
8000 W 44th Ave  
Wheat Ridge CO 80033

Martin C Eckert III  
Project Number: [none]  
Project: Noble - Shable #24-20

**PAH by 8270D SIM - Quality Control**  
**Waypoint Analytical, Inc.**

Analyte	Result	Reporting Limit	Units	Spike Level	Source Result	%REC	%REC Limits	RPD	RPD Limit	Notes
---------	--------	-----------------	-------	-------------	---------------	------	-------------	-----	-----------	-------

**Batch L599683 - 3550B**

MS (L 91328-MS-L599683)		Source: 91328			Prepared: 02/15/2022 Analyzed: 02/16/2022					
Benzo(a)pyrene	0.118	0.00234	mg/Kg	0.164	<0.00234	71.9	30-130			
Benzo(a)anthracene	0.114	0.00247	"	0.164	<0.00247	69.5	30-130			
Anthracene	0.11	0.00167	"	0.164	<0.00167	67	30-130			
Acenaphthene	0.108	0.00152	"	0.164	0.00557	62.4	30-130			
Dibenz(a,h)anthracene	0.12	0.00307	"	0.164	<0.00307	73.1	30-130			
2-Methylnaphthalene	0.11	0.00323	"	0.164	0.0122	59.6	30-130			
1-Methylnaphthalene	0.157	0.00182	"	0.164	0.0528	63.5	30-130			
Pyrene	0.123	0.00322	"	0.164	<0.00322	75	30-130			
Surrogate: Nitrobenzene-d5	51		"	0.329	167	51	29-110			
Surrogate: 4-Terphenyl-d14	68.9		"	0.329	220	68.9	33-122			
Surrogate: 2-Fluorobiphenyl	58.3		"	0.329	191	58.3	33-115			

**LCS (LCS-L599683)**

Prepared: 02/15/2022 Analyzed: 02/16/2022

Dibenz(a,h)anthracene	0.124	0.000614	mg/Kg	0.167		74.2	30-130
Benzo(a)anthracene	0.103	0.000493	"	0.167		61.6	30-130
Benzo(a)pyrene	0.109	0.000468	"	0.167		65.2	30-130
Benzo(b)fluoranthene	0.117	0.000585	"	0.167		70	30-130
Benzo(k)fluoranthene	0.105	0.000437	"	0.167		62.8	30-130
Chrysene	0.103	0.000624	"	0.167		61.6	30-130
Fluoranthene	0.108	0.000394	"	0.167		64.6	30-130
Indeno(1,2,3-cd)pyrene	0.125	0.000627	"	0.167		74.8	30-130
Naphthalene	0.0873	0.000484	"	0.167		52.2	30-130
Pyrene	0.106	0.000643	"	0.167		63.4	30-130
Anthracene	0.101	0.000334	"	0.167		60.4	30-130
2-Methylnaphthalene	0.0917	0.000645	"	0.167		54.9	30-130
Fluorene	0.101	0.000286	"	0.167		60.4	30-130
Acenaphthene	0.0948	0.000304	"	0.167		56.7	30-130

Origins Laboratory, Inc.

The results in this report apply to the samples analyzed in accordance with the chain of custody document. This analytical report must be reproduced in its entirety.

Eagle Environmental Consulting, Inc.  
8000 W 44th Ave  
Wheat Ridge CO 80033

Martin C Eckert III  
Project Number: [none]  
Project: Noble - Shable #24-20

**PAH by 8270D SIM - Quality Control**  
**Waypoint Analytical, Inc.**

Analyte	Result	Reporting Limit	Units	Spike Level	Source Result	%REC	%REC Limits	RPD	RPD Limit	Notes
---------	--------	-----------------	-------	-------------	---------------	------	-------------	-----	-----------	-------

**Batch L599683 - 3550B**

**LCS (LCS-L599683)**

Prepared: 02/15/2022 Analyzed: 02/16/2022

1-Methylnaphthalene	0.0923	0.000364	mg/Kg	0.167		55.2	30-130			
Surrogate: Nitrobenzene-d5	52.2		"	0.333		52.2	29-110			
Surrogate: 4-Terphenyl-d14	61.8		"	0.333		61.8	33-122			
Surrogate: 2-Fluorobiphenyl	57.3		"	0.333		57.3	33-115			

**LRB (LRB-L599683)**

Prepared: 02/15/2022 Analyzed: 02/16/2022

Benzo(b)fluoranthene	ND	0.00067	mg/Kg				-			
1-Methylnaphthalene	ND	0.00067	"				-			
2-Methylnaphthalene	ND	0.00067	"				-			
Acenaphthene	ND	0.00067	"				-			
Benzo(a)anthracene	ND	0.00067	"				-			
Dibenz(a,h)anthracene	ND	0.00067	"				-			
Benzo(k)fluoranthene	ND	0.00067	"				-			
Anthracene	ND	0.00067	"				-			
Chrysene	ND	0.00067	"				-			
Benzo(a)pyrene	ND	0.00067	"				-			
Fluoranthene	ND	0.00067	"				-			
Fluorene	ND	0.00067	"				-			
Indeno(1,2,3-cd)pyrene	ND	0.00067	"				-			
Naphthalene	ND	0.00067	"				-			
Pyrene	ND	0.00067	"				-			
Surrogate: 2-Fluorobiphenyl	55.5		"	0.333		55.5	33-115			
Surrogate: 4-Terphenyl-d14	60.3		"	0.333		60.3	33-122			
Surrogate: Nitrobenzene-d5	52.8		"	0.333		52.8	29-110			

**Batch L599814 - 3550B**

**MSD (L 89594-MSD-L599814)**

**Source: Y202170-04**

Prepared: 02/16/2022 Analyzed: 02/17/2022

Origins Laboratory, Inc.



The results in this report apply to the samples analyzed in accordance with the chain of custody document. This analytical report must be reproduced in its entirety.

Eagle Environmental Consulting, Inc.  
8000 W 44th Ave  
Wheat Ridge CO 80033

Martin C Eckert III  
Project Number: [none]  
Project: Noble - Shable #24-20

**PAH by 8270D SIM - Quality Control**  
**Waypoint Analytical, Inc.**

Analyte	Result	Reporting Limit	Units	Spike Level	Source Result	%REC	%REC Limits	RPD	RPD Limit	Notes
---------	--------	-----------------	-------	-------------	---------------	------	-------------	-----	-----------	-------

**Batch L599814 - 3550B**

MSD (L 89594-MSD-L599814)		Source: Y202170-04			Prepared: 02/16/2022 Analyzed: 02/17/2022					
Chrysene	0.105	0.000624	mg/Kg	0.166	<0.000624	63.2	30-130	0.9	30	
Naphthalene	0.0803	0.000484	"	0.166	<0.000484	48.3	30-130	0.9	30	
Indeno(1,2,3-cd)pyrene	0.0848	0.000627	"	0.166	<0.000627	51	30-130	8	30	
Fluorene	0.0843	0.000286	"	0.166	<0.000286	50.7	30-130	3	30	
Fluoranthene	0.0992	0.000394	"	0.166	<0.000394	59.7	30-130	0.6	30	
Dibenz(a,h)anthracene	0.0992	0.000614	"	0.166	<0.000614	59.7	30-130	7.5	30	
Pyrene	0.0972	0.000643	"	0.166	<0.000643	58.5	30-130	0.7	30	
1-Methylnaphthalene	0.0779	0.000364	"	0.166	<0.000364	46.9	30-130	2	30	
Benzo(b)fluoranthene	0.0838	0.000585	"	0.166	<0.000585	50.4	30-130	4.5	30	
Benzo(a)pyrene	0.109	0.000468	"	0.166	<0.000468	65.6	30-130	2.7	30	
Benzo(a)anthracene	0.0994	0.000493	"	0.166	<0.000493	59.8	30-130	1.3	30	
Anthracene	0.0894	0.000334	"	0.166	<0.000334	53.8	30-130	0.8	30	
Acenaphthene	0.0741	0.000304	"	0.166	<0.000304	44.6	30-130	3.9	30	
2-Methylnaphthalene	0.0766	0.000645	"	0.166	<0.000645	46.1	30-130	2.4	30	
Benzo(k)fluoranthene	0.0834	0.000437	"	0.166	<0.000437	50.2	30-130	9	30	
Surrogate: 2-Fluorobiphenyl	52.8		"	0.331	162	52.8	33-115			
Surrogate: Nitrobenzene-d5	53.4		"	0.331	157	53.4	29-110			
Surrogate: 4-Terphenyl-d14	69.1		"	0.331	206	69.1	33-122			

MS (L 89594-MS-L599814)		Source: Y202170-04			Prepared: 02/16/2022 Analyzed: 02/17/2022					
Benzo(a)pyrene	0.106	0.000468	mg/Kg	0.163	<0.000468	65	30-130			
Benzo(a)anthracene	0.0981	0.000493	"	0.163	<0.000493	60.1	30-130			
Benzo(b)fluoranthene	0.0801	0.000585	"	0.163	<0.000585	49.1	30-130			
Acenaphthene	0.0771	0.000304	"	0.163	<0.000304	47.3	30-130			
2-Methylnaphthalene	0.0785	0.000645	"	0.163	<0.000645	48.1	30-130			
1-Methylnaphthalene	0.0795	0.000364	"	0.163	<0.000364	48.7	30-130			
Pyrene	0.0965	0.000643	"	0.163	<0.000643	59.2	30-130			

Origins Laboratory, Inc.

The results in this report apply to the samples analyzed in accordance with the chain of custody document. This analytical report must be reproduced in its entirety.

Eagle Environmental Consulting, Inc.  
8000 W 44th Ave  
Wheat Ridge CO 80033

Martin C Eckert III  
Project Number: [none]  
Project: Noble - Shable #24-20

**PAH by 8270D SIM - Quality Control**  
**Waypoint Analytical, Inc.**

Analyte	Result	Reporting Limit	Units	Spike Level	Source Result	%REC	%REC Limits	RPD	RPD Limit	Notes
---------	--------	-----------------	-------	-------------	---------------	------	-------------	-----	-----------	-------

**Batch L599814 - 3550B**

MS (L 89594-MS-L599814)		Source: Y202170-04			Prepared: 02/16/2022 Analyzed: 02/17/2022					
Chrysene	0.104	0.000624	mg/Kg	0.163	<0.000624	63.8	30-130			
Dibenz(a,h)anthracene	0.107	0.000614	"	0.163	<0.000614	65.6	30-130			
Fluoranthene	0.0986	0.000394	"	0.163	<0.000394	60.4	30-130			
Fluorene	0.0869	0.000286	"	0.163	<0.000286	53.3	30-130			
Indeno(1,2,3-cd)pyrene	0.0919	0.000627	"	0.163	<0.000627	56.3	30-130			
Naphthalene	0.0811	0.000484	"	0.163	<0.000484	49.7	30-130			
Anthracene	0.0886	0.000334	"	0.163	<0.000334	54.3	30-130			
Benzo(k)fluoranthene	0.0913	0.000437	"	0.163	<0.000437	56	30-130			
Surrogate: 4-Terphenyl-d14	61.3		"	0.326	206	61.3	33-122			
Surrogate: 2-Fluorobiphenyl	49.6		"	0.326	162	49.6	33-115			
Surrogate: Nitrobenzene-d5	48.1		"	0.326	157	48.1	29-110			

**LCS (LCS-L599814)**

Prepared: 02/16/2022 Analyzed: 02/17/2022

Indeno(1,2,3-cd)pyrene	0.0936	0.000627	mg/Kg	0.167		56	30-130			
Fluorene	0.0915	0.000286	"	0.167		54.7	30-130			
Fluoranthene	0.104	0.000394	"	0.167		62.2	30-130			
Dibenz(a,h)anthracene	0.11	0.000614	"	0.167		65.8	30-130			
Chrysene	0.107	0.000624	"	0.167		64	30-130			
Benzo(b)fluoranthene	0.0884	0.000585	"	0.167		52.9	30-130			
Benzo(k)fluoranthene	0.0917	0.000437	"	0.167		54.9	30-130			
Benzo(a)anthracene	0.105	0.000493	"	0.167		62.8	30-130			
Benzo(a)pyrene	0.113	0.000468	"	0.167		67.6	30-130			
Acenaphthene	0.0837	0.000304	"	0.167		50.1	30-130			
Naphthalene	0.0898	0.000484	"	0.167		53.7	30-130			
2-Methylnaphthalene	0.087	0.000645	"	0.167		52	30-130			
1-Methylnaphthalene	0.0882	0.000364	"	0.167		52.8	30-130			
Anthracene	0.0946	0.000334	"	0.167		56.6	30-130			

Origins Laboratory, Inc.

The results in this report apply to the samples analyzed in accordance with the chain of custody document. This analytical report must be reproduced in its entirety.

Eagle Environmental Consulting, Inc.  
8000 W 44th Ave  
Wheat Ridge CO 80033

Martin C Eckert III  
Project Number: [none]  
Project: Noble - Shable #24-20

**PAH by 8270D SIM - Quality Control**  
**Waypoint Analytical, Inc.**

Analyte	Result	Reporting Limit	Units	Spike Level	Source Result	%REC	%REC Limits	RPD	RPD Limit	Notes
<b>Batch L599814 - 3550B</b>										
<b>LCS (LCS-L599814)</b>					Prepared: 02/16/2022 Analyzed: 02/17/2022					
Pyrene	0.102	0.000643	mg/Kg	0.167		61	30-130			
Surrogate: 4-Terphenyl-d14	67.5		"	0.333	67.5		33-122			
Surrogate: Nitrobenzene-d5	54.3		"	0.333	54.3		29-110			
Surrogate: 2-Fluorobiphenyl	57		"	0.333	57		33-115			
<b>LRB (LRB-L599814)</b>					Prepared: 02/16/2022 Analyzed: 02/17/2022					
Benzo(a)anthracene	ND	0.00067	mg/Kg				-			
Benzo(b)fluoranthene	ND	0.00067	"				-			
Benzo(k)fluoranthene	ND	0.00067	"				-			
Chrysene	ND	0.00067	"				-			
Dibenz(a,h)anthracene	ND	0.00067	"				-			
Fluoranthene	ND	0.00067	"				-			
Fluorene	ND	0.00067	"				-			
Naphthalene	ND	0.00067	"				-			
Pyrene	ND	0.00067	"				-			
Benzo(a)pyrene	ND	0.00067	"				-			
1-Methylnaphthalene	ND	0.00067	"				-			
2-Methylnaphthalene	ND	0.00067	"				-			
Acenaphthene	ND	0.00067	"				-			
Anthracene	ND	0.00067	"				-			
Indeno(1,2,3-cd)pyrene	ND	0.00067	"				-			
Surrogate: 2-Fluorobiphenyl	55.8		"	0.333	55.8		33-115			
Surrogate: 4-Terphenyl-d14	64.2		"	0.333	64.2		33-122			
Surrogate: Nitrobenzene-d5	52.2		"	0.333	52.2		29-110			

Origins Laboratory, Inc.

The results in this report apply to the samples analyzed in accordance with the chain of custody document. This analytical report must be reproduced in its entirety.



Eagle Environmental Consulting, Inc.  
8000 W 44th Ave  
Wheat Ridge CO 80033

Martin C Eckert III  
Project Number: [none]  
Project: Noble - Shable #24-20

## Total Metals by 6020B - Quality Control Waypoint Analytical, Inc.

Analyte	Result	Reporting Limit	Units	Spike Level	Source Result	%REC	%REC Limits	RPD	RPD Limit	Notes
<b>Batch L599213 - 3050B</b>										
<b>MSD (L 90235-MSD-L599213)</b>			<b>Source: 90235</b>		Prepared: 02/14/2022 Analyzed: 02/15/2022					
Arsenic	2.99	0.0855	mg/Kg	2.48	0.987	81	75-125	16.2	80	
Selenium	4.16	0.103	"	4.96	<0.103	84	75-125	13.6	80	
Barium	39.2	0.042	"	4.96	30.2	181	75-125	14.7	80	*
Cadmium	0.58	0.0259	"	0.496	0.0542	117	75-125	2.6	80	
Copper	4.98	0.0806	"	2.48	2.48	101	75-125	5.1	80	
Silver	0.502	0.0067	"	0.496	0.0188	101	75-125	4.4	80	
Zinc	39.6	0.534	"	24.8	14.4	102	75-125	2.7	80	
Nickel	4.59	0.0633	"	2.48	2.11	100	75-125	15.2	80	
Lead	6.26	0.031	"	2.48	3.34	118	75-125	4.3	80	
<b>MS (L 90235-MS-L599213)</b>			<b>Source: 90235</b>		Prepared: 02/14/2022 Analyzed: 02/15/2022					
Zinc	40.7	0.534	mg/Kg	23.9	14.4	110	75-125			
Arsenic	2.54	0.0855	"	2.39	0.987	65	75-125			*
Silver	0.48	0.0067	"	0.478	0.0188	100	75-125			
Barium	33.8	0.042	"	4.78	30.2	75	75-125			
Selenium	3.63	0.103	"	4.78	<0.103	76	75-125			
Nickel	5.35	0.0633	"	2.39	2.11	135	75-125			*
Lead	6.54	0.031	"	2.39	3.34	134	75-125			*
Copper	4.73	0.0806	"	2.39	2.48	94	75-125			
Cadmium	0.565	0.0259	"	0.478	0.0542	118	75-125			
<b>LCS (LCS-L599213)</b>			Prepared: 02/14/2022 Analyzed: 02/15/2022							
Copper	2.33	0.0806	mg/Kg	2.5		93	80-120			
Zinc	23.7	0.534	"	25		95	80-120			
Silver	0.499	0.0067	"	0.5		100	80-120			
Selenium	5.27	0.103	"	5		105	80-120			
Lead	2.48	0.031	"	2.5		99	80-120			

Origins Laboratory, Inc.



The results in this report apply to the samples analyzed in accordance with the chain of custody document. This analytical report must be reproduced in its entirety.

Eagle Environmental Consulting, Inc.  
8000 W 44th Ave  
Wheat Ridge CO 80033

Martin C Eckert III  
Project Number: [none]  
Project: Noble - Shable #24-20

## Total Metals by 6020B - Quality Control Waypoint Analytical, Inc.

Analyte	Result	Reporting Limit	Units	Spike Level	Source Result	%REC	%REC Limits	RPD	RPD Limit	Notes
<b>Batch L599213 - 3050B</b>										
<b>LCS (LCS-L599213)</b>					Prepared: 02/14/2022 Analyzed: 02/15/2022					
Cadmium	0.494	0.0259	mg/Kg	0.5		99	80-120			
Barium	4.98	0.042	"	5		100	80-120			
Arsenic	2.6	0.0855	"	2.5		104	80-120			
Nickel	2.38	0.0633	"	2.5		95	80-120			
<b>LRB (LRB-L599213)</b>					Prepared: 02/14/2022 Analyzed: 02/15/2022					
Cadmium	ND	0.25	mg/Kg				-			
Zinc	ND	2.5	"				-			
Silver	ND	0.25	"				-			
Selenium	ND	0.25	"				-			
Nickel	ND	0.25	"				-			
Copper	ND	0.25	"				-			
Barium	0.0613	0.25	"				-			J
Arsenic	ND	0.25	"				-			
Lead	ND	0.25	"				-			

Origins Laboratory, Inc.



The results in this report apply to the samples analyzed in accordance with the chain of custody document. This analytical report must be reproduced in its entirety.

Eagle Environmental Consulting, Inc.  
8000 W 44th Ave  
Wheat Ridge CO 80033

Martin C Eckert III  
Project Number: [none]  
Project: Noble - Shable #24-20

**Total Metals by 7196A - Quality Control**  
**Waypoint Analytical, Inc.**

Analyte	Result	Reporting Limit	Units	Spike Level	Source Result	%REC	%REC Limits	RPD	RPD Limit	Notes
<b>Batch L600110 -</b>										
<b>DUP (L 89591-DUP)</b>		<b>Source: Y202170-01</b>			Prepared: Analyzed: 02/17/2022					
Chromium, Hexavalent	ND	0.488	mg/Kg		<1.00		-	0	20	
<b>MS (L 89591-MS)</b>		<b>Source: Y202170-01</b>			Prepared: Analyzed: 02/17/2022					
Chromium, Hexavalent	3.44	0.502	mg/Kg	8.25	<0.502	42	75-125			*
<b>LCS (LCS)</b>					Prepared: Analyzed: 02/17/2022					
Chromium, Hexavalent	6.95	0.244	mg/Kg	8		87	75-125			
<b>LRB (LRB)</b>					Prepared: Analyzed: 02/17/2022					
Chromium, Hexavalent	ND	0.5	mg/Kg				-			

Origins Laboratory, Inc.



*The results in this report apply to the samples analyzed in accordance with the chain of custody document. This analytical report must be reproduced in its entirety.*

Eagle Environmental Consulting, Inc.  
8000 W 44th Ave  
Wheat Ridge CO 80033

Martin C Eckert III  
Project Number: [none]  
Project: Noble - Shable #24-20

### Notes and Definitions

U Sample is Non-Detect.

J Estimated Value. Analyte below reported quantitation limit.

\* QC Failure

ND Analyte NOT DETECTED at or above the reporting limit

RPD Relative Percent Difference

All soil results are reported on a wet weight basis.

Origins Laboratory, Inc.



*The results in this report apply to the samples analyzed in accordance with the chain of custody document. This analytical report must be reproduced in its entirety.*



March 01, 2022

Eagle Environmental Consulting, Inc.

Martin C Eckert III

8000 W 44th Ave

Wheat Ridge CO 80033

Project Name - Noble - Shable #24-20

Project Number - [none]

Attached are your analytical results for Noble - Shable #24-20 received by Origins Laboratory, Inc. February 21, 2022. This project is associated with Origins project number Y202481-01.

The analytical results in the following report were analyzed under the guidelines of EPA Methods. These methods are identified as follows; "SW" are defined in SW-846, "EPA" are defined in 40CFR part 136 and "SM" are defined in the most current revision of Standard Methods For the Examination of Water and Wastewater.

The analytical results apply specifically to the samples and analyses specified per the attached Chain of Custody. As such, this report shall not be reproduced except in full, without the written approval of Origin's laboratory.

Unless otherwise noted, the analytical results for all soil samples are reported on a wet weight basis. All analytical analyses were performed under NELAP guidelines unless noted by a data qualifier.

Any holding time exceedances, deviations from the method specifications or deviations from Origins Laboratory's Standard Operating Procedures are outlined in the case narrative.

Thank you for selecting Origins for your analytical needs. Please contact us with any questions concerning this report, or if we can help with anything at all.

Origins Laboratory, Inc.  
303.433.1322  
o-squad@oelabinc.com



1725 Elk Place, Denver, CO 80211 | Phone: 303.433.1322 | Fax: 303.265.9645



Eagle Environmental Consulting, Inc.

8000 W 44th Ave

Wheat Ridge CO 80033

Martin C Eckert III

Project Number: [none]

Project: Noble - Shable #24-20

### CROSS REFERENCE REPORT

Sample ID	Laboratory ID	Matrix	Date Sampled	Date Received
Background-01@3'	Y202481-01	Soil	February 7, 2022 12:15	02/21/2022 16:57

Origins Laboratory, Inc.



*The results in this report apply to the samples analyzed in accordance with the chain of custody document. This analytical report must be reproduced in its entirety.*



Eagle Environmental Consulting, Inc.  
8000 W 44th Ave  
Wheat Ridge CO 80033

Martin C Eckert III  
Project Number: [none]  
Project: Noble - Shable #24-20

Origins Laboratory

F-012207-01-R1  
Effective Date: 01/09/12

## Sample Receipt Checklist

Origins Work Order: 2207481

Client: Eagle

Client Project ID: Shable 24-20

Checklist Completed by: KH

Shipped Via: HD

(UPS, FedEx, Hand Delivered, Pick-up, etc.)

Date/time completed: 2/21/22

Airbill #: NA

Matrix(s) Received: (Check all that apply): ☒ Soil/Solid ☐ Water ☐ Other: \_\_\_\_\_

Cooler Number/Temperature: 1143 °C / \_\_\_\_\_ °C / \_\_\_\_\_ °C (Describe) \_\_\_\_\_ °C

Thermometer ID: 1003

Requirement Description	Yes	No	N/A	Comments (if any)
If samples require cooling, was the temperature between 0°C to ≤ 6°C <sup>(1)</sup> ?	<input checked="" type="checkbox"/>	<input type="checkbox"/>	<input type="checkbox"/>	
Is there ice present (document if blue ice is used)	<input checked="" type="checkbox"/>	<input type="checkbox"/>	<input type="checkbox"/>	
Are custody seals present on cooler? (if so, document in comments if they are signed and dated, broken or intact)	<input type="checkbox"/>	<input checked="" type="checkbox"/>	<input type="checkbox"/>	
Are custody seals present on each sample container? (if so, document in comments if they are signed and dated, broken or intact)	<input type="checkbox"/>	<input checked="" type="checkbox"/>	<input type="checkbox"/>	
Were all samples received intact <sup>(1)</sup> ?	<input checked="" type="checkbox"/>	<input type="checkbox"/>	<input type="checkbox"/>	
Was adequate sample volume provided <sup>(1)</sup> ?	<input checked="" type="checkbox"/>	<input type="checkbox"/>	<input type="checkbox"/>	
Are short holding time analytes or samples with HTs due within 48 hours present <sup>(1)</sup> ?	<input type="checkbox"/>	<input checked="" type="checkbox"/>	<input type="checkbox"/>	
Is a chain-of-custody (COC) present and filled out completely <sup>(1)</sup> ?	<input checked="" type="checkbox"/>	<input type="checkbox"/>	<input type="checkbox"/>	
Does the COC agree with the number and type of sample bottles received <sup>(1)</sup> ?	<input checked="" type="checkbox"/>	<input type="checkbox"/>	<input type="checkbox"/>	
Do the sample IDs on the bottle labels match the COC <sup>(1)</sup> ?	<input checked="" type="checkbox"/>	<input type="checkbox"/>	<input type="checkbox"/>	
Is the COC properly relinquished by the client with date and time recorded <sup>(1)</sup> ?	<input checked="" type="checkbox"/>	<input type="checkbox"/>	<input type="checkbox"/>	
For volatiles in water – is there headspace (> ¼ inch bubble) present? If yes, contact client and note in narrative.	<input type="checkbox"/>	<input checked="" type="checkbox"/>	<input type="checkbox"/>	
Are samples preserved that require preservation and was it checked <sup>(1)</sup> ? (note ID of confirmation instrument used in comments) / (preservation is not confirmed for subcontracted analyses in order to insure sample integrity)(pH < 2 for samples preserved with HNO <sub>3</sub> , HCL, H <sub>2</sub> SO <sub>4</sub> ) / (pH > 10 for samples preserved with NaAsO <sub>2</sub> +NaOH, ZnAc+NaOH)	<input type="checkbox"/>	<input checked="" type="checkbox"/>	<input type="checkbox"/>	
Additional Comments (if any):				

<sup>(1)</sup>If NO, then contact the client before proceeding with analysis and note date/time and person contacted as well as the corrective action to in the additional comments (above) and the case narrative.

Reviewed by (Project Manager): dm

Date/Time Reviewed: 2-22-22

Origins Laboratory, Inc.

The results in this report apply to the samples analyzed in accordance with the chain of custody document. This analytical report must be reproduced in its entirety.

Eagle Environmental Consulting, Inc.  
8000 W 44th Ave  
Wheat Ridge CO 80033

Martin C Eckert III  
Project Number: [none]  
Project: Noble - Shable #24-20

**Background-01@3'**  
**2/7/2022 12:15:00PM**

Analyte	Result	Min Detection Limit	Reporting Limit	Units	Dilution	Batch	Prepared	Analyzed	Notes
---------	--------	---------------------	-----------------	-------	----------	-------	----------	----------	-------

**Origins Laboratory, Inc.**  
**Y202481-01 (Soil)**

**Metals by Saturated Paste by EPA 6010**

Calcium	0.823	0.499	meq/L	10	[CALC]	02/22/2022	02/23/2022
Magnesium	1.24	0.823	"	"	"	"	"
Sodium	5.51	0.435	"	"	"	"	"

**pH in Soil by 9045D**

pH	8.42	pH Units	1	B2B2209	02/22/2022	02/23/2022
----	------	----------	---	---------	------------	------------

**SAR by 20B Saturated Paste**

SAR	5.42	SAR	1	B2B2207	02/22/2022	02/23/2022
-----	------	-----	---	---------	------------	------------

**Total Metals by 6020B**

Arsenic	0.943	0.0855	0.25	mg/Kg	5	L601435	02/24/2022	02/28/2022
Barium	32.7	0.042	0.25	"	"	"	"	"
Lead	7.41	0.031	0.25	"	"	"	"	"
Selenium	0.246	0.103	0.25	"	"	"	"	"

J

Origins Laboratory, Inc.



*The results in this report apply to the samples analyzed in accordance with the chain of custody document. This analytical report must be reproduced in its entirety.*

Eagle Environmental Consulting, Inc.  
8000 W 44th Ave  
Wheat Ridge CO 80033

Martin C Eckert III  
Project Number: [none]  
Project: Noble - Shable #24-20

**Saturated Paste - Quality Control**  
**Origins Laboratory, Inc.**

Analyte	Result	Reporting Limit	Units	Spike Level	Source Result	%REC	%REC Limits	RPD	RPD Limit	Notes
---------	--------	-----------------	-------	-------------	---------------	------	-------------	-----	-----------	-------

Batch B2B2209 - NO PREP

Duplicate (B2B2209-DUP1)

Source: Y202475-01

Prepared: 02/22/2022 Analyzed: 02/23/2022

pH	8.52		pH Units		8.71			2.21	25	
----	------	--	----------	--	------	--	--	------	----	--

Origins Laboratory, Inc.



*The results in this report apply to the samples analyzed in accordance with the chain of custody document. This analytical report must be reproduced in its entirety.*



Eagle Environmental Consulting, Inc.  
8000 W 44th Ave  
Wheat Ridge CO 80033

Martin C Eckert III  
Project Number: [none]  
Project: Noble - Shable #24-20

## Total Metals by 6020B - Quality Control Waypoint Analytical, LLC.

Analyte	Result	Reporting Limit	Units	Spike Level	Source Result	%REC	%REC Limits	RPD	RPD Limit	Notes
<b>Batch L601435 - 3050B</b>										
<b>MSD (L 97520-MSD-L601435)</b>			<b>Source: Y202481-01</b>		Prepared: 02/24/2022 Analyzed: 02/28/2022					
Barium	34.3	0.042	mg/Kg	4.61	32.7	35	75-125	16.5	80	*
Lead	10.8	0.031	"	2.3	7.41	147	75-125	0.9	80	*
Selenium	3.82	0.103	"	4.61	0.246	83	75-125	4.3	80	
Arsenic	3.16	0.0855	"	2.3	0.943	96	75-125	9.6	80	
<b>MS (L 97520-MS-L601435)</b>			<b>Source: Y202481-01</b>		Prepared: 02/24/2022 Analyzed: 02/28/2022					
Selenium	3.99	0.103	mg/Kg	4.88	0.246	82	75-125			
Arsenic	2.87	0.0855	"	2.44	0.943	79	75-125			
Barium	40.5	0.042	"	4.88	32.7	160	75-125			*
Lead	10.7	0.031	"	2.44	7.41	135	75-125			*
<b>LCS (LCS-L601435)</b>			Prepared: 02/24/2022 Analyzed: 02/28/2022							
Barium	4.72	0.042	mg/Kg	5		94	80-120			
Lead	2.47	0.031	"	2.5		99	80-120			
Selenium	5.22	0.103	"	5		104	80-120			
Arsenic	2.51	0.0855	"	2.5		100	80-120			
<b>LRB (LRB-L601435)</b>			Prepared: 02/24/2022 Analyzed: 02/28/2022							
Selenium	ND	0.25	mg/Kg				-			
Arsenic	ND	0.25	"				-			
Barium	0.0538	0.25	"				-			J
Lead	ND	0.25	"				-			

Origins Laboratory, Inc.



The results in this report apply to the samples analyzed in accordance with the chain of custody document. This analytical report must be reproduced in its entirety.

Eagle Environmental Consulting, Inc.  
8000 W 44th Ave  
Wheat Ridge CO 80033

Martin C Eckert III  
Project Number: [none]  
Project: Noble - Shable #24-20

### Notes and Definitions

J Estimated Value. Analyte below reported quantitation limit.

\* QC Failure

ND Analyte NOT DETECTED at or above the reporting limit

RPD Relative Percent Difference

All soil results are reported on a wet weight basis.

Origins Laboratory, Inc.



*The results in this report apply to the samples analyzed in accordance with the chain of custody document. This analytical report must be reproduced in its entirety.*



May 10, 2022

Eagle Environmental Consulting, Inc.

Martin C Eckert III

8000 W 44th Ave

Wheat Ridge CO 80033

Project Name - Noble - Shable #24-20

Project Number - [none]

Attached are your analytical results for Noble - Shable #24-20 received by Origins Laboratory, Inc. May 03, 2022. This project is associated with Origins project number Y205037-01.

The analytical results in the following report were analyzed under the guidelines of EPA Methods. These methods are identified as follows; "SW" are defined in SW-846, "EPA" are defined in 40CFR part 136 and "SM" are defined in the most current revision of Standard Methods For the Examination of Water and Wastewater.

The analytical results apply specifically to the samples and analyses specified per the attached Chain of Custody. As such, this report shall not be reproduced except in full, without the written approval of Origin's laboratory.

Unless otherwise noted, the analytical results for all soil samples are reported on a wet weight basis. All analytical analyses were performed under NELAP guidelines unless noted by a data qualifier.

Any holding time exceedances, deviations from the method specifications or deviations from Origins Laboratory's Standard Operating Procedures are outlined in the case narrative.

Thank you for selecting Origins for your analytical needs. Please contact us with any questions concerning this report, or if we can help with anything at all.

Origins Laboratory, Inc.  
303.433.1322  
o-squad@oelabinc.com



1725 Elk Place, Denver, CO 80211 | Phone: 303.433.1322 | Fax: 303.265.9645

Eagle Environmental Consulting, Inc.

8000 W 44th Ave

Wheat Ridge CO 80033

Martin C Eckert III

Project Number: [none]

Project: Noble - Shable #24-20

## CROSS REFERENCE REPORT

Sample ID	Laboratory ID	Matrix	Date Sampled	Date Received
FL-SS-01@3'	Y205037-01	Soil	May 3, 2022 10:45	05/03/2022 13:45
FL-SS-02@3'	Y205037-02	Soil	May 3, 2022 10:55	05/03/2022 13:45
FL-SS-03@3'	Y205037-03	Soil	May 3, 2022 11:05	05/03/2022 13:45

Origins Laboratory, Inc.



*The results in this report apply to the samples analyzed in accordance with the chain of custody document. This analytical report must be reproduced in its entirety.*





Eagle Environmental Consulting, Inc.  
8000 W 44th Ave  
Wheat Ridge CO 80033

Martin C Eckert III  
Project Number: [none]  
Project: Noble - Shable #24-20

Origins Laboratory

F-012207-01-R1  
Effective Date: 01/09/12

### Sample Receipt Checklist

Origins Work Order: 4205037 Client: Eagle  
Client Project ID: Shable #24-20

Checklist Completed by: AK Shipped Via: TD  
Date/time completed: 5/3/12 (UPS, FedEx, Hand Delivered, Pick-up, etc.)  
Airbill #: NA

Matrix(s) Received: (Check all that apply): / Soil/Solid / Water / Other: /  
Cooler Number/Temperature: 1 12.1 °C / °C / °C (Describe) / °C  
Thermometer ID: TCX4

Requirement Description	Yes	No	N/A	Comments (if any)
If samples require cooling, was the temperature between 0°C to ≤ 6°C <sup>(1)</sup> ?	<u>/</u>			
Is there ice present (document if blue ice is used)	<u>/</u>			
Are custody seals present on cooler? (if so, document in comments if they are signed and dated, broken or intact)		<u>/</u>		
Are custody seals present on each sample container? (if so, document in comments if they are signed and dated, broken or intact)		<u>/</u>		
Were all samples received intact <sup>(1)</sup> ?	<u>/</u>			
Was adequate sample volume provided <sup>(1)</sup> ?	<u>/</u>			
Are short holding time analytes or samples with HTs due within 48 hours present <sup>(1)</sup> ?		<u>/</u>		
Is a chain-of-custody (COC) present and filled out completely <sup>(1)</sup> ?	<u>/</u>			
Does the COC agree with the number and type of sample bottles received <sup>(1)</sup> ?	<u>/</u>			
Do the sample IDs on the bottle labels match the COC <sup>(1)</sup> ?	<u>/</u>			
Is the COC properly relinquished by the client with date and time recorded <sup>(1)</sup> ?	<u>/</u>			
For volatiles in water – is there headspace (> ¼ inch bubble) present? If yes, contact client and note in narrative.			<u>/</u>	
Are samples preserved that require preservation and was it checked <sup>(1)</sup> ? (note ID of confirmation instrument used in comments) / (preservation is not confirmed for subcontracted analyses in order to insure sample integrity)/(pH < 2 for samples preserved with HNO <sub>3</sub> , HCL, H <sub>2</sub> SO <sub>4</sub> ) / ( pH > 10 for samples preserved with NaAsO <sub>2</sub> +NaOH, ZnAc+NaOH)			<u>/</u>	
Additional Comments (if any):				

<sup>(1)</sup>if NO, then contact the client before proceeding with analysis and note date/time and person contacted as well as the corrective action to in the additional comments (above) and the case narrative.

Reviewed by: AK (Project Manager) Date/Time Reviewed: 5-3-12

Origins Laboratory, Inc.

*J. Bynon*

The results in this report apply to the samples analyzed in accordance with the chain of custody document. This analytical report must be reproduced in its entirety.

Eagle Environmental Consulting, Inc.  
8000 W 44th Ave  
Wheat Ridge CO 80033

Martin C Eckert III  
Project Number: [none]  
Project: Noble - Shable #24-20

FL-SS-01@3'  
5/3/2022 10:45:00AM

Analyte	Result	Reporting Limit	Units	Dilution	Batch	Analyst	Prepared	Analyzed	Notes
---------	--------	-----------------	-------	----------	-------	---------	----------	----------	-------

Y205037-01 (Soil)  
Origins Laboratory, Inc.

## Boron (DTPA Sorbitol)

Boron	0.492	0.0983	mg/L	1	B2E0404	KAP	05/04/2022	05/05/2022	
-------	-------	--------	------	---	---------	-----	------------	------------	--

## DRO/ORO by EPA 8015D

Diesel (C10-C28)	ND	25.0	mg/kg	1	B2E0501	ZZZ	05/05/2022	05/07/2022	U
Residual Range Organics (C28-C40)	ND	100	"	"	"	ZZZ	"	"	U

Surrogate: o-Terphenyl	104 %	50-150			"	"	"	
------------------------	-------	--------	--	--	---	---	---	--

## GBTEX+TMBs by 8260D

1,2,4-Trimethylbenzene	ND	0.00200	mg/kg	1	B2E0503	ZZZ	05/05/2022	05/05/2022	U
1,3,5-Trimethylbenzene	ND	0.00200	"	"	"	ZZZ	"	"	U
Benzene	ND	0.00200	"	"	"	ZZZ	"	"	U
Ethylbenzene	ND	0.00200	"	"	"	ZZZ	"	"	U
Toluene	ND	0.00200	"	"	"	ZZZ	"	"	U
Xylenes, total	ND	0.00200	"	"	"	ZZZ	"	"	U
Gasoline Range Hydrocarbons	ND	0.200	"	"	"	ZZZ	"	"	U

Surrogate: 1,2-Dichloroethane-d4	84.1 %	70-130			"	"	"	
Surrogate: Toluene-d8	97.3 %	70-130			"	"	"	
Surrogate: 4-Bromofluorobenzene	103 %	70-130			"	"	"	

## Metals by Saturated Paste by EPA 6010

Origins Laboratory, Inc.



The results in this report apply to the samples analyzed in accordance with the chain of custody document. This analytical report must be reproduced in its entirety.

Eagle Environmental Consulting, Inc.  
8000 W 44th Ave  
Wheat Ridge CO 80033

Martin C Eckert III  
Project Number: [none]  
Project: Noble - Shable #24-20

FL-SS-01@3'

5/3/2022 10:45:00AM

Analyte	Result	Reporting Limit	Units	Dilution	Batch	Analyst	Prepared	Analyzed	Notes
---------	--------	-----------------	-------	----------	-------	---------	----------	----------	-------

Y205037-01 (Soil)

Origins Laboratory, Inc.

## Metals by Saturated Paste by EPA 6010

Calcium	2.38	0.499	meq/L	10	[CALC]	KAP	05/04/2022	05/05/2022
Magnesium	1.75	0.823	"	"	"	KAP	"	"
Sodium	12.7	0.435	"	"	"	KAP	"	"

## pH in Soil by 9045D

pH	8.43		pH Units	1	B2E0403	ACC	05/04/2022	05/05/2022
----	------	--	----------	---	---------	-----	------------	------------

## SAR by 20B Saturated Paste

SAR	8.83		SAR	1	B2E0401	KAP	05/04/2022	05/05/2022
-----	------	--	-----	---	---------	-----	------------	------------

## Specific Conductance Mod. 9050A

Specific Conductance (EC)	1.73	0.00500	mmhos/cm	1	B2E0402	ACC	05/04/2022	05/05/2022
---------------------------	------	---------	----------	---	---------	-----	------------	------------

Waypoint Analytical, Inc.

## PAH by 8270D SIM

1-Methylnaphthalene	ND	0.00067	mg/Kg	1	L614511		05/05/2022	05/06/2022
2-Methylnaphthalene	ND	0.00067	"	"	"		"	"
Acenaphthene	ND	0.00067	"	"	"		"	"
Anthracene	ND	0.00067	"	"	"		"	"

Origins Laboratory, Inc.



The results in this report apply to the samples analyzed in accordance with the chain of custody document. This analytical report must be reproduced in its entirety.

Eagle Environmental Consulting, Inc.  
8000 W 44th Ave  
Wheat Ridge CO 80033

Martin C Eckert III  
Project Number: [none]  
Project: Noble - Shable #24-20

FL-SS-01@3'

5/3/2022 10:45:00AM

Analyte	Result	Reporting Limit	Units	Dilution	Batch	Analyst	Prepared	Analyzed	Notes
---------	--------	-----------------	-------	----------	-------	---------	----------	----------	-------

Y205037-01 (Soil)  
Waypoint Analytical, Inc.

## PAH by 8270D SIM

Benzo(a)anthracene	ND	0.00067	mg/Kg	1	L614511		05/05/2022	05/06/2022	
Benzo(a)pyrene	ND	0.00067	"	"	"		"	"	
Benzo(b)fluoranthene	ND	0.00067	"	"	"		"	"	
Benzo(k)fluoranthene	ND	0.00067	"	"	"		"	"	
Chrysene	ND	0.00067	"	"	"		"	"	
Dibenz(a,h)anthracene	ND	0.00067	"	"	"		"	"	
Fluoranthene	0.000583	0.00067	"	"	"		"	"	J
Fluorene	ND	0.00067	"	"	"		"	"	
Indeno(1,2,3-cd)pyrene	ND	0.00067	"	"	"		"	"	
Naphthalene	ND	0.00067	"	"	"		"	"	
Pyrene	0.000646	0.00067	"	"	"		"	"	J
Surrogate: 2-Fluorobiphenyl	51.2 %	33-115			"		"	"	
Surrogate: 4-Terphenyl-d14	69.3 %	33-122			"		"	"	
Surrogate: Nitrobenzene-d5	47.3 %	29-110			"		"	"	

Origins Laboratory, Inc.



The results in this report apply to the samples analyzed in accordance with the chain of custody document. This analytical report must be reproduced in its entirety.

Eagle Environmental Consulting, Inc.  
8000 W 44th Ave  
Wheat Ridge CO 80033

Martin C Eckert III  
Project Number: [none]  
Project: Noble - Shable #24-20

FL-SS-02@3'

5/3/2022 10:55:00AM

Analyte	Result	Reporting Limit	Units	Dilution	Batch	Analyst	Prepared	Analyzed	Notes
---------	--------	-----------------	-------	----------	-------	---------	----------	----------	-------

Y205037-02 (Soil)  
Origins Laboratory, Inc.

**Boron (DTPA Sorbitol)**

Boron	0.491	0.0981	mg/L	1	B2E0404	KAP	05/04/2022	05/05/2022	
-------	-------	--------	------	---	---------	-----	------------	------------	--

**DRO/ORO by EPA 8015D**

Diesel (C10-C28)	ND	25.0	mg/kg	1	B2E0501	ZZZ	05/05/2022	05/07/2022	U
Residual Range Organics (C28-C40)	ND	100	"	"	"	ZZZ	"	"	U

Surrogate: o-Terphenyl	110 %	50-150			"	"	"	
------------------------	-------	--------	--	--	---	---	---	--

**GBTEX+TMBs by 8260D**

1,2,4-Trimethylbenzene	ND	0.00200	mg/kg	1	B2E0503	ZZZ	05/05/2022	05/05/2022	U
1,3,5-Trimethylbenzene	ND	0.00200	"	"	"	ZZZ	"	"	U
Benzene	ND	0.00200	"	"	"	ZZZ	"	"	U
Ethylbenzene	ND	0.00200	"	"	"	ZZZ	"	"	U
Toluene	ND	0.00200	"	"	"	ZZZ	"	"	U
Xylenes, total	ND	0.00200	"	"	"	ZZZ	"	"	U
Gasoline Range Hydrocarbons	ND	0.200	"	"	"	ZZZ	"	"	U

Surrogate: 1,2-Dichloroethane-d4	87.5 %	70-130			"	"	"
Surrogate: Toluene-d8	91.8 %	70-130			"	"	"
Surrogate: 4-Bromofluorobenzene	102 %	70-130			"	"	"

**Metals by Saturated Paste by EPA 6010**

Origins Laboratory, Inc.



The results in this report apply to the samples analyzed in accordance with the chain of custody document. This analytical report must be reproduced in its entirety.



Eagle Environmental Consulting, Inc.  
8000 W 44th Ave  
Wheat Ridge CO 80033

Martin C Eckert III  
Project Number: [none]  
Project: Noble - Shable #24-20

FL-SS-02@3'

5/3/2022 10:55:00AM

Analyte	Result	Reporting Limit	Units	Dilution	Batch	Analyst	Prepared	Analyzed	Notes
---------	--------	-----------------	-------	----------	-------	---------	----------	----------	-------

Y205037-02 (Soil)

Origins Laboratory, Inc.

## Metals by Saturated Paste by EPA 6010

Calcium	3.41	0.499	meq/L	10	[CALC]	KAP	05/04/2022	05/05/2022
Magnesium	3.99	0.823	"	"	"	KAP	"	"
Sodium	26.4	0.435	"	"	"	KAP	"	"

## pH in Soil by 9045D

pH	8.20		pH Units	1	B2E0403	ACC	05/04/2022	05/05/2022
----	------	--	----------	---	---------	-----	------------	------------

## SAR by 20B Saturated Paste

SAR	13.7		SAR	1	B2E0401	KAP	05/04/2022	05/05/2022
-----	------	--	-----	---	---------	-----	------------	------------

## Specific Conductance Mod. 9050A

Specific Conductance (EC)	3.52	0.00500	mmhos/cm	1	B2E0402	ACC	05/04/2022	05/05/2022
---------------------------	------	---------	----------	---	---------	-----	------------	------------

Waypoint Analytical, Inc.

## PAH by 8270D SIM

1-Methylnaphthalene	ND	0.00067	mg/Kg	1	L614511		05/05/2022	05/06/2022
2-Methylnaphthalene	ND	0.00067	"	"	"		"	"
Acenaphthene	ND	0.00067	"	"	"		"	"
Anthracene	ND	0.00067	"	"	"		"	"

Origins Laboratory, Inc.



The results in this report apply to the samples analyzed in accordance with the chain of custody document. This analytical report must be reproduced in its entirety.

Eagle Environmental Consulting, Inc.  
8000 W 44th Ave  
Wheat Ridge CO 80033

Martin C Eckert III  
Project Number: [none]  
Project: Noble - Shable #24-20

FL-SS-02@3'

5/3/2022 10:55:00AM

Analyte	Result	Reporting Limit	Units	Dilution	Batch	Analyst	Prepared	Analyzed	Notes
---------	--------	-----------------	-------	----------	-------	---------	----------	----------	-------

Y205037-02 (Soil)

Waypoint Analytical, Inc.

## PAH by 8270D SIM

Benzo(a)anthracene	ND	0.00067	mg/Kg	1	L614511		05/05/2022	05/06/2022	
Benzo(a)pyrene	ND	0.00067	"	"	"		"	"	
Benzo(b)fluoranthene	ND	0.00067	"	"	"		"	"	
Benzo(k)fluoranthene	ND	0.00067	"	"	"		"	"	
Chrysene	ND	0.00067	"	"	"		"	"	
Dibenz(a,h)anthracene	ND	0.00067	"	"	"		"	"	
Fluoranthene	ND	0.00067	"	"	"		"	"	
Fluorene	ND	0.00067	"	"	"		"	"	
Indeno(1,2,3-cd)pyrene	ND	0.00067	"	"	"		"	"	
Naphthalene	ND	0.00067	"	"	"		"	"	
Pyrene	ND	0.00067	"	"	"		"	"	

Surrogate: 2-Fluorobiphenyl	54.7 %	33-115		"	"	"
Surrogate: 4-Terphenyl-d14	68.5 %	33-122		"	"	"
Surrogate: Nitrobenzene-d5	51.4 %	29-110		"	"	"

Origins Laboratory, Inc.



The results in this report apply to the samples analyzed in accordance with the chain of custody document. This analytical report must be reproduced in its entirety.

Eagle Environmental Consulting, Inc.  
8000 W 44th Ave  
Wheat Ridge CO 80033

Martin C Eckert III  
Project Number: [none]  
Project: Noble - Shable #24-20

FL-SS-03@3'

5/3/2022 11:05:00AM

Analyte	Result	Reporting Limit	Units	Dilution	Batch	Analyst	Prepared	Analyzed	Notes
---------	--------	-----------------	-------	----------	-------	---------	----------	----------	-------

Y205037-03 (Soil)  
Origins Laboratory, Inc.

## Boron (DTPA Sorbitol)

Boron	0.461	0.100	mg/L	1	B2E0404	KAP	05/04/2022	05/05/2022	
-------	-------	-------	------	---	---------	-----	------------	------------	--

## DRO/ORO by EPA 8015D

Diesel (C10-C28)	ND	25.0	mg/kg	1	B2E0501	ZZZ	05/05/2022	05/07/2022	U
Residual Range Organics (C28-C40)	ND	100	"	"	"	ZZZ	"	"	U

Surrogate: o-Terphenyl	90.2 %	50-150			"	"	"	
------------------------	--------	--------	--	--	---	---	---	--

## GBTEX+TMBs by 8260D

1,2,4-Trimethylbenzene	ND	0.00200	mg/kg	1	B2E0503	ZZZ	05/05/2022	05/05/2022	U
1,3,5-Trimethylbenzene	ND	0.00200	"	"	"	ZZZ	"	"	U
Benzene	ND	0.00200	"	"	"	ZZZ	"	"	U
Ethylbenzene	ND	0.00200	"	"	"	ZZZ	"	"	U
Toluene	ND	0.00200	"	"	"	ZZZ	"	"	U
Xylenes, total	ND	0.00200	"	"	"	ZZZ	"	"	U
Gasoline Range Hydrocarbons	ND	0.200	"	"	"	ZZZ	"	"	U

Surrogate: 1,2-Dichloroethane-d4	86.1 %	70-130			"	"	"
Surrogate: Toluene-d8	99.8 %	70-130			"	"	"
Surrogate: 4-Bromofluorobenzene	103 %	70-130			"	"	"

## Metals by Saturated Paste by EPA 6010

Origins Laboratory, Inc.



The results in this report apply to the samples analyzed in accordance with the chain of custody document. This analytical report must be reproduced in its entirety.

Eagle Environmental Consulting, Inc.  
8000 W 44th Ave  
Wheat Ridge CO 80033

Martin C Eckert III  
Project Number: [none]  
Project: Noble - Shable #24-20

FL-SS-03@3'

5/3/2022 11:05:00AM

Analyte	Result	Reporting Limit	Units	Dilution	Batch	Analyst	Prepared	Analyzed	Notes
---------	--------	-----------------	-------	----------	-------	---------	----------	----------	-------

Y205037-03 (Soil)

Origins Laboratory, Inc.

## Metals by Saturated Paste by EPA 6010

Calcium	2.54	0.499	meq/L	10	[CALC]	KAP	05/04/2022	05/05/2022
Magnesium	3.97	0.823	"	"	"	KAP	"	"
Sodium	40.9	0.435	"	"	"	KAP	"	"

## pH in Soil by 9045D

pH	8.27		pH Units	1	B2E0403	ACC	05/04/2022	05/05/2022
----	------	--	----------	---	---------	-----	------------	------------

## SAR by 20B Saturated Paste

SAR	22.7		SAR	1	B2E0401	KAP	05/04/2022	05/05/2022
-----	------	--	-----	---	---------	-----	------------	------------

## Specific Conductance Mod. 9050A

Specific Conductance (EC)	4.75	0.00500	mmhos/cm	1	B2E0402	ACC	05/04/2022	05/05/2022
---------------------------	------	---------	----------	---	---------	-----	------------	------------

Waypoint Analytical, Inc.

## PAH by 8270D SIM

1-Methylnaphthalene	ND	0.00067	mg/Kg	1	L614511		05/05/2022	05/06/2022
2-Methylnaphthalene	ND	0.00067	"	"	"		"	"
Acenaphthene	ND	0.00067	"	"	"		"	"
Anthracene	ND	0.00067	"	"	"		"	"

Origins Laboratory, Inc.



The results in this report apply to the samples analyzed in accordance with the chain of custody document. This analytical report must be reproduced in its entirety.

Eagle Environmental Consulting, Inc.  
8000 W 44th Ave  
Wheat Ridge CO 80033

Martin C Eckert III  
Project Number: [none]  
Project: Noble - Shable #24-20

FL-SS-03@3'

5/3/2022 11:05:00AM

Analyte	Result	Reporting Limit	Units	Dilution	Batch	Analyst	Prepared	Analyzed	Notes
---------	--------	-----------------	-------	----------	-------	---------	----------	----------	-------

**Y205037-03 (Soil)**  
**Waypoint Analytical, Inc.**

**PAH by 8270D SIM**

Benzo(a)anthracene	ND	0.00067	mg/Kg	1	L614511		05/05/2022	05/06/2022	
Benzo(a)pyrene	ND	0.00067	"	"	"		"	"	
Benzo(b)fluoranthene	ND	0.00067	"	"	"		"	"	
Benzo(k)fluoranthene	ND	0.00067	"	"	"		"	"	
Chrysene	ND	0.00067	"	"	"		"	"	
Dibenz(a,h)anthracene	ND	0.00067	"	"	"		"	"	
Fluoranthene	ND	0.00067	"	"	"		"	"	
Fluorene	ND	0.00067	"	"	"		"	"	
Indeno(1,2,3-cd)pyrene	ND	0.00067	"	"	"		"	"	
Naphthalene	ND	0.00067	"	"	"		"	"	
Pyrene	ND	0.00067	"	"	"		"	"	

Surrogate: 2-Fluorobiphenyl	53.5 %	33-115		"	"	"
Surrogate: 4-Terphenyl-d14	72.1 %	33-122		"	"	"
Surrogate: Nitrobenzene-d5	51.7 %	29-110		"	"	"

Origins Laboratory, Inc.



The results in this report apply to the samples analyzed in accordance with the chain of custody document. This analytical report must be reproduced in its entirety.



Eagle Environmental Consulting, Inc.  
8000 W 44th Ave  
Wheat Ridge CO 80033

Martin C Eckert III  
Project Number: [none]  
Project: Noble - Shable #24-20

**Extractable Petroleum Hydrocarbons by 8015D - Quality Control**  
**Origins Laboratory, Inc.**

Analyte	Result	Reporting Limit	Units	Spike Level	Source Result	%REC	%REC Limits	RPD	RPD Limit	Notes
<b>Batch B2E0501 - EPA 3550B</b>										
<b>Blank (B2E0501-BLK1)</b>					Prepared: 05/05/2022 Analyzed: 05/06/2022					
Diesel (C10-C28)	ND	25.0	mg/kg							U
Residual Range Organics (C28-C40)	ND	100	"							U
Surrogate: o-Terphenyl	24		"	24.9		96.7	50-150			

Origins Laboratory, Inc.



*The results in this report apply to the samples analyzed in accordance with the chain of custody document. This analytical report must be reproduced in its entirety.*

Eagle Environmental Consulting, Inc.

8000 W 44th Ave

Wheat Ridge CO 80033

Martin C Eckert III

Project Number: [none]

Project: Noble - Shable #24-20

## Extractable Petroleum Hydrocarbons by 8015D - Quality Control

Origins Laboratory, Inc.

Analyte	Result	Reporting Limit	Units	Spike Level	Source Result	%REC	%REC Limits	RPD	RPD Limit	Notes
---------	--------	-----------------	-------	-------------	---------------	------	-------------	-----	-----------	-------

Batch B2E0501 - EPA 3550B

### LCS (B2E0501-BS1)

Prepared: 05/05/2022 Analyzed: 05/06/2022

Diesel (C10-C28)	855	50.0	mg/kg	1000		85.5	70-130			
Residual Range Organics (C28-C40)	917	200	"	1000		91.7	70-130			
Surrogate: o-Terphenyl	47		"	49.8		94.1	50-150			

Origins Laboratory, Inc.



The results in this report apply to the samples analyzed in accordance with the chain of custody document. This analytical report must be reproduced in its entirety.

Eagle Environmental Consulting, Inc.

8000 W 44th Ave

Wheat Ridge CO 80033

Martin C Eckert III

Project Number: [none]

Project: Noble - Shable #24-20

## Extractable Petroleum Hydrocarbons by 8015D - Quality Control

Origins Laboratory, Inc.

Analyte	Result	Reporting Limit	Units	Spike Level	Source Result	%REC	%REC Limits	RPD	RPD Limit	Notes
---------	--------	-----------------	-------	-------------	---------------	------	-------------	-----	-----------	-------

### Batch B2E0501 - EPA 3550B

Matrix Spike (B2E0501-MS1)		Source: Y205031-01			Prepared: 05/05/2022 Analyzed: 05/07/2022					
Diesel (C10-C28)	829	50.0	mg/kg	1000	ND	82.9	70-130			
Residual Range Organics (C28-C40)	927	200	"	1000	ND	92.7	70-130			
Surrogate: o-Terphenyl	54		"	49.8		109	50-150			

Origins Laboratory, Inc.



The results in this report apply to the samples analyzed in accordance with the chain of custody document. This analytical report must be reproduced in its entirety.

Eagle Environmental Consulting, Inc.  
8000 W 44th Ave  
Wheat Ridge CO 80033

Martin C Eckert III  
Project Number: [none]  
Project: Noble - Shable #24-20

**Extractable Petroleum Hydrocarbons by 8015D - Quality Control**  
**Origins Laboratory, Inc.**

Analyte	Result	Reporting Limit	Units	Spike Level	Source Result	%REC	%REC Limits	RPD	RPD Limit	Notes
---------	--------	-----------------	-------	-------------	---------------	------	-------------	-----	-----------	-------

**Batch B2E0501 - EPA 3550B**

Matrix Spike Dup (B2E0501-MSD1)		Source: Y205031-01			Prepared: 05/05/2022 Analyzed: 05/07/2022					
Diesel (C10-C28)	871	50.0	mg/kg	1000	ND	87.1	70-130	4.90	35	
Residual Range Organics (C28-C40)	929	200	"	1000	ND	92.9	70-130	0.141	35	
Surrogate: o-Terphenyl	45		"	49.8		90.1	50-150			

Origins Laboratory, Inc.



*The results in this report apply to the samples analyzed in accordance with the chain of custody document. This analytical report must be reproduced in its entirety.*

Eagle Environmental Consulting, Inc.  
8000 W 44th Ave  
Wheat Ridge CO 80033

Martin C Eckert III  
Project Number: [none]  
Project: Noble - Shable #24-20

## Extractable Petroleum Hydrocarbons by 8015D - Quality Control

### Origins Laboratory, Inc.

Analyte	Result	Reporting Limit	Units	Spike Level	Source Result	%REC	%REC Limits	RPD	RPD Limit	Notes
Batch B2E0503 - EPA 5030 (soil)										
Blank (B2E0503-BLK1)					Prepared: 05/05/2022 Analyzed: 05/05/2022					
1,2,4-Trimethylbenzene	ND	0.00200	mg/kg							U
1,3,5-Trimethylbenzene	ND	0.00200	"							U
Benzene	ND	0.00200	"							U
Ethylbenzene	ND	0.00200	"							U
Naphthalene	ND	0.0100	"							U
Toluene	ND	0.00200	"							U
Xylenes, total	ND	0.00200	"							U
Gasoline Range Hydrocarbons	ND	0.200	"							U
Surrogate: 1,2-Dichloroethane-d4	0.10		"	0.125		83.4	70-130			
Surrogate: Toluene-d8	0.13		"	0.125		101	70-130			
Surrogate: 4-Bromofluorobenzene	0.13		"	0.125		104	70-130			

Origins Laboratory, Inc.



The results in this report apply to the samples analyzed in accordance with the chain of custody document. This analytical report must be reproduced in its entirety.

Eagle Environmental Consulting, Inc.  
8000 W 44th Ave  
Wheat Ridge CO 80033

Martin C Eckert III  
Project Number: [none]  
Project: Noble - Shable #24-20

**Volatile Organic Compounds by GC/MS SW846 8260D - Quality Control**  
**Origins Laboratory, Inc.**

Analyte	Result	Reporting Limit	Units	Spike Level	Source Result	%REC	%REC Limits	RPD	RPD Limit	Notes
---------	--------	-----------------	-------	-------------	---------------	------	-------------	-----	-----------	-------

**Batch B2E0503 - EPA 5030 (soil)**

**LCS (B2E0503-BS1)**

Prepared: 05/05/2022 Analyzed: 05/05/2022

1,2,4-Trimethylbenzene	0.0816	0.00200	mg/kg	0.100		81.6	70-130			
1,3,5-Trimethylbenzene	0.0822	0.00200	"	0.100		82.2	70-130			
Benzene	0.104	0.00200	"	0.100		104	70-130			
Ethylbenzene	0.0955	0.00200	"	0.100		95.5	70-130			
Naphthalene	0.0812	0.0100	"	0.100		81.2	70-130			
Toluene	0.0965	0.00200	"	0.100		96.5	70-130			
o-Xylene	0.0954	0.00200	"	0.100		95.4	70-130			
m,p-Xylene	0.182	0.00400	"	0.200		90.9	70-130			
Surrogate: 1,2-Dichloroethane-d4	0.10		"	0.125		82.9	70-130			
Surrogate: Toluene-d8	0.13		"	0.125		102	70-130			
Surrogate: 4-Bromofluorobenzene	0.12		"	0.125		97.4	70-130			

Origins Laboratory, Inc.



*The results in this report apply to the samples analyzed in accordance with the chain of custody document. This analytical report must be reproduced in its entirety.*



Eagle Environmental Consulting, Inc.  
8000 W 44th Ave  
Wheat Ridge CO 80033

Martin C Eckert III  
Project Number: [none]  
Project: Noble - Shable #24-20

## Volatile Organic Compounds by GC/MS SW846 8260D - Quality Control

### Origins Laboratory, Inc.

Analyte	Result	Reporting Limit	Units	Spike Level	Source Result	%REC	%REC Limits	RPD	RPD Limit	Notes
Batch B2E0503 - EPA 5030 (soil)										
Matrix Spike (B2E0503-MS1)		Source: Y205037-01			Prepared: 05/05/2022 Analyzed: 05/05/2022					
1,2,4-Trimethylbenzene	0.0913	0.00200	mg/kg	0.100	ND	91.3	70-130			
1,3,5-Trimethylbenzene	0.100	0.00200	"	0.100	ND	100	70-130			
Benzene	0.101	0.00200	"	0.100	ND	101	70-130			
Ethylbenzene	0.108	0.00200	"	0.100	ND	108	70-130			
Naphthalene	0.0830	0.0100	"	0.100	0.000960	82.1	70-130			
Toluene	0.102	0.00200	"	0.100	ND	102	70-130			
o-Xylene	0.106	0.00200	"	0.100	ND	106	70-130			
m,p-Xylene	0.208	0.00400	"	0.200	ND	104	70-130			
Surrogate: 1,2-Dichloroethane-d4	0.11		"	0.125		84.6	70-130			
Surrogate: Toluene-d8	0.13		"	0.125		102	70-130			
Surrogate: 4-Bromofluorobenzene	0.13		"	0.125		104	70-130			

Origins Laboratory, Inc.



The results in this report apply to the samples analyzed in accordance with the chain of custody document. This analytical report must be reproduced in its entirety.

Eagle Environmental Consulting, Inc.  
8000 W 44th Ave  
Wheat Ridge CO 80033

Martin C Eckert III  
Project Number: [none]  
Project: Noble - Shable #24-20

**Volatile Organic Compounds by GC/MS SW846 8260D - Quality Control**  
**Origins Laboratory, Inc.**

Analyte	Result	Reporting Limit	Units	Spike Level	Source Result	%REC	%REC Limits	RPD	RPD Limit	Notes
<b>Batch B2E0503 - EPA 5030 (soil)</b>										
<b>Matrix Spike Dup (B2E0503-MSD1)</b>		<b>Source: Y205037-01</b>			Prepared: 05/05/2022 Analyzed: 05/05/2022					
1,2,4-Trimethylbenzene	0.117	0.00200	mg/kg	0.100	ND	117	70-130	24.4	20	QM-07
1,3,5-Trimethylbenzene	0.121	0.00200	"	0.100	ND	121	70-130	18.6	20	
Benzene	0.123	0.00200	"	0.100	ND	123	70-130	19.5	20	
Ethylbenzene	0.126	0.00200	"	0.100	ND	126	70-130	15.3	20	
Naphthalene	0.0920	0.0100	"	0.100	0.000960	91.1	70-130	10.3	20	
Toluene	0.120	0.00200	"	0.100	ND	120	70-130	15.9	20	
o-Xylene	0.122	0.00200	"	0.100	ND	122	70-130	13.3	20	
m,p-Xylene	0.246	0.00400	"	0.200	ND	123	70-130	16.7	20	
Surrogate: 1,2-Dichloroethane-d4	0.12		"	0.125		95.0	70-130			
Surrogate: Toluene-d8	0.12		"	0.125		97.4	70-130			
Surrogate: 4-Bromofluorobenzene	0.13		"	0.125		102	70-130			

Origins Laboratory, Inc.



*The results in this report apply to the samples analyzed in accordance with the chain of custody document. This analytical report must be reproduced in its entirety.*

Eagle Environmental Consulting, Inc.  
8000 W 44th Ave  
Wheat Ridge CO 80033

Martin C Eckert III  
Project Number: [none]  
Project: Noble - Shable #24-20

## Volatile Organic Compounds by GC/MS SW846 8260D - Quality Control

### Origins Laboratory, Inc.

Analyte	Result	Reporting Limit	Units	Spike Level	Source Result	%REC	%REC Limits	RPD	RPD Limit	Notes
---------	--------	-----------------	-------	-------------	---------------	------	-------------	-----	-----------	-------

## Saturated Paste - Quality Control

### Origins Laboratory, Inc.

Analyte	Result	Reporting Limit	Units	Spike Level	Source Result	%REC	%REC Limits	RPD	RPD Limit	Notes
---------	--------	-----------------	-------	-------------	---------------	------	-------------	-----	-----------	-------

#### Batch B2E0402 - NO PREP

##### Blank (B2E0402-BLK1)

Prepared: 05/04/2022 Analyzed: 05/05/2022

Specific Conductance (EC) 0.00120 0.00500 mmhos/cm

##### Duplicate (B2E0402-DUP1)

Source: Y205037-01

Prepared: 05/04/2022 Analyzed: 05/05/2022

Specific Conductance (EC) 1.66 0.00500 mmhos/cm 1.73 4.11 25

#### Batch B2E0403 - NO PREP

##### Duplicate (B2E0403-DUP1)

Source: Y205037-01

Prepared: 05/04/2022 Analyzed: 05/05/2022

pH 8.34 pH Units 8.43 1.07 25

Origins Laboratory, Inc.



The results in this report apply to the samples analyzed in accordance with the chain of custody document. This analytical report must be reproduced in its entirety.

Eagle Environmental Consulting, Inc.  
8000 W 44th Ave  
Wheat Ridge CO 80033

Martin C Eckert III  
Project Number: [none]  
Project: Noble - Shable #24-20

**PAH by 8270D SIM - Quality Control**  
**Waypoint Analytical, Inc.**

Analyte	Result	Reporting Limit	Units	Spike Level	Source Result	%REC	%REC Limits	RPD	RPD Limit	Notes
---------	--------	-----------------	-------	-------------	---------------	------	-------------	-----	-----------	-------

**Batch L614511 - 3550B**

MSD (L 85960-MSD-L614511)		Source: 85960			Prepared: 05/05/2022 Analyzed: 05/06/2022					
Dibenz(a,h)anthracene	0.125	0.000614	mg/Kg	0.164	0.000768	75.7	30-130	2.4	30	
1-Methylnaphthalene	0.0892	0.000364	"	0.164	<0.000364	54.3	30-130	8.6	30	
Naphthalene	0.0862	0.000484	"	0.164	<0.000484	52.5	30-130	8.2	30	
Indeno(1,2,3-cd)pyrene	0.132	0.000627	"	0.164	0.00175	79.4	30-130	1.5	30	
Fluoranthene	0.118	0.000394	"	0.164	<0.000394	71.9	30-130	0	30	
Chrysene	0.099	0.000624	"	0.164	<0.000624	60.3	30-130	0.5	30	
Benzo(k)fluoranthene	0.077	0.000437	"	0.164	<0.000437	46.9	30-130	12	30	
Benzo(b)fluoranthene	0.0898	0.000585	"	0.164	<0.000585	54.7	30-130	12.4	30	
Pyrene	0.112	0.000643	"	0.164	<0.000643	68.2	30-130	0.8	30	
Benzo(a)anthracene	0.108	0.000493	"	0.164	<0.000493	65.8	30-130	0.9	30	
Anthracene	0.116	0.000334	"	0.164	<0.000334	70.7	30-130	1.7	30	
Acenaphthene	0.097	0.000304	"	0.164	<0.000304	59.1	30-130	7.3	30	
2-Methylnaphthalene	0.0894	0.000645	"	0.164	<0.000645	54.5	30-130	8.8	30	
Benzo(a)pyrene	0.109	0.000468	"	0.164	<0.000468	66.4	30-130	0.9	30	
Fluorene	0.105	0.000286	"	0.164	<0.000286	64	30-130	5.9	30	
Surrogate: Nitrobenzene-d5	43.1		"	0.329	135	43.1	29-110			
Surrogate: 4-Terphenyl-d14	60.7		"	0.329	189	60.7	33-122			
Surrogate: 2-Fluorobiphenyl	47.7		"	0.329	144	47.7	33-115			

MS (L 85960-MS-L614511)		Source: 85960			Prepared: 05/05/2022 Analyzed: 05/06/2022					
Pyrene	0.113	0.000643	mg/Kg	0.165	<0.000643	68.4	30-130			
Benzo(k)fluoranthene	0.0869	0.000437	"	0.165	<0.000437	52.6	30-130			
Chrysene	0.0995	0.000624	"	0.165	<0.000624	60.3	30-130			
Dibenz(a,h)anthracene	0.122	0.000614	"	0.165	0.000768	73.4	30-130			
Fluoranthene	0.118	0.000394	"	0.165	<0.000394	71.5	30-130			
Fluorene	0.0989	0.000286	"	0.165	<0.000286	59.9	30-130			
Naphthalene	0.0794	0.000484	"	0.165	<0.000484	48.1	30-130			

Origins Laboratory, Inc.



The results in this report apply to the samples analyzed in accordance with the chain of custody document. This analytical report must be reproduced in its entirety.

Eagle Environmental Consulting, Inc.  
8000 W 44th Ave  
Wheat Ridge CO 80033

Martin C Eckert III  
Project Number: [none]  
Project: Noble - Shable #24-20

**PAH by 8270D SIM - Quality Control**  
**Waypoint Analytical, Inc.**

Analyte	Result	Reporting Limit	Units	Spike Level	Source Result	%REC	%REC Limits	RPD	RPD Limit	Notes
---------	--------	-----------------	-------	-------------	---------------	------	-------------	-----	-----------	-------

**Batch L614511 - 3550B**

MS (L 85960-MS-L614511)		Source: 85960			Prepared: 05/05/2022 Analyzed: 05/06/2022					
1-Methylnaphthalene	0.0818	0.000364	mg/Kg	0.165	<0.000364	49.5	30-130			
Indeno(1,2,3-cd)pyrene	0.13	0.000627	"	0.165	0.00175	77.7	30-130			
Benzo(b)fluoranthene	0.0793	0.000585	"	0.165	<0.000585	48	30-130			
Benzo(a)pyrene	0.108	0.000468	"	0.165	<0.000468	65.4	30-130			
Benzo(a)anthracene	0.109	0.000493	"	0.165	<0.000493	66	30-130			
Anthracene	0.114	0.000334	"	0.165	<0.000334	69	30-130			
Acenaphthene	0.0901	0.000304	"	0.165	<0.000304	54.6	30-130			
2-Methylnaphthalene	0.0818	0.000645	"	0.165	<0.000645	49.5	30-130			
Surrogate: 4-Terphenyl-d14	58.4		"	0.33	189	58.4	33-122			
Surrogate: Nitrobenzene-d5	38.1		"	0.33	135	38.1	29-110			
Surrogate: 2-Fluorobiphenyl	42.4		"	0.33	144	42.4	33-115			

LCS (LCS-L614511)		Prepared: 05/05/2022 Analyzed: 05/06/2022								
Benzo(b)fluoranthene	0.102	0.000585	mg/Kg	0.167		61	30-130			
Chrysene	0.117	0.000624	"	0.167		70	30-130			
Pyrene	0.127	0.000643	"	0.167		76	30-130			
Naphthalene	0.0947	0.000484	"	0.167		56.7	30-130			
Indeno(1,2,3-cd)pyrene	0.142	0.000627	"	0.167		85	30-130			
Fluorene	0.111	0.000286	"	0.167		66.4	30-130			
Benzo(a)anthracene	0.123	0.000493	"	0.167		73.6	30-130			
Dibenz(a,h)anthracene	0.143	0.000614	"	0.167		85.6	30-130			
1-Methylnaphthalene	0.096	0.000364	"	0.167		57.4	30-130			
Benzo(k)fluoranthene	0.0895	0.000437	"	0.167		53.5	30-130			
Benzo(a)pyrene	0.121	0.000468	"	0.167		72.4	30-130			
Anthracene	0.13	0.000334	"	0.167		77.8	30-130			
Acenaphthene	0.102	0.000304	"	0.167		61	30-130			
2-Methylnaphthalene	0.097	0.000645	"	0.167		58	30-130			

Origins Laboratory, Inc.



The results in this report apply to the samples analyzed in accordance with the chain of custody document. This analytical report must be reproduced in its entirety.

Eagle Environmental Consulting, Inc.  
8000 W 44th Ave  
Wheat Ridge CO 80033

Martin C Eckert III  
Project Number: [none]  
Project: Noble - Shable #24-20

**PAH by 8270D SIM - Quality Control**  
**Waypoint Analytical, Inc.**

Analyte	Result	Reporting Limit	Units	Spike Level	Source Result	%REC	%REC Limits	RPD	RPD Limit	Notes
<b>Batch L614511 - 3550B</b>										
<b>LCS (LCS-L614511)</b>					Prepared: 05/05/2022 Analyzed: 05/06/2022					
Fluoranthene	0.133	0.000394	mg/Kg	0.167		79.6	30-130			
Surrogate: Nitrobenzene-d5	51		"	0.333		51	29-110			
Surrogate: 4-Terphenyl-d14	71.4		"	0.333		71.4	33-122			
Surrogate: 2-Fluorobiphenyl	54.9		"	0.333		54.9	33-115			
<b>LRB (LRB-L614511)</b>					Prepared: 05/05/2022 Analyzed: 05/06/2022					
Dibenz(a,h)anthracene	ND	0.00067	mg/Kg				-			
Benzo(a)pyrene	ND	0.00067	"				-			
Pyrene	ND	0.00067	"				-			
Naphthalene	ND	0.00067	"				-			
Indeno(1,2,3-cd)pyrene	ND	0.00067	"				-			
Fluorene	ND	0.00067	"				-			
Fluoranthene	ND	0.00067	"				-			
Benzo(k)fluoranthene	ND	0.00067	"				-			
Benzo(b)fluoranthene	ND	0.00067	"				-			
1-Methylnaphthalene	ND	0.00067	"				-			
Benzo(a)anthracene	ND	0.00067	"				-			
Anthracene	ND	0.00067	"				-			
Acenaphthene	ND	0.00067	"				-			
2-Methylnaphthalene	ND	0.00067	"				-			
Chrysene	ND	0.00067	"				-			
Surrogate: Nitrobenzene-d5	47.4		"	0.333		47.4	29-110			
Surrogate: 4-Terphenyl-d14	75.3		"	0.333		75.3	33-122			
Surrogate: 2-Fluorobiphenyl	47.7		"	0.333		47.7	33-115			

Origins Laboratory, Inc.



The results in this report apply to the samples analyzed in accordance with the chain of custody document. This analytical report must be reproduced in its entirety.



Eagle Environmental Consulting, Inc.

8000 W 44th Ave

Wheat Ridge CO 80033

Martin C Eckert III

Project Number: [none]

Project: Noble - Shable #24-20

### Notes and Definitions

U Sample is Non-Detect.

QM-07 The spike recovery was outside acceptance limits for the MS and/or MSD. The batch was accepted based on acceptable LCS recovery.

J Estimated Value. Analyte below reported quantitation limit.

ND Analyte NOT DETECTED at or above the reporting limit

RPD Relative Percent Difference

All soil results are reported at a wet weight basis.

Origins Laboratory, Inc.



*The results in this report apply to the samples analyzed in accordance with the chain of custody document. This analytical report must be reproduced in its entirety.*



May 26, 2022

Eagle Environmental Consulting, Inc.

Martin C Eckert III

8000 W 44th Ave

Wheat Ridge CO 80033

Project Name - Noble - Shable #24-20

Project Number - [none]

Attached are your analytical results for Noble - Shable #24-20 received by Origins Laboratory, Inc. May 16, 2022. This project is associated with Origins project number Y205426-01.

The analytical results in the following report were analyzed under the guidelines of EPA Methods. These methods are identified as follows; "SW" are defined in SW-846, "EPA" are defined in 40CFR part 136 and "SM" are defined in the most current revision of Standard Methods For the Examination of Water and Wastewater.

The analytical results apply specifically to the samples and analyses specified per the attached Chain of Custody. As such, this report shall not be reproduced except in full, without the written approval of Origin's laboratory.

Unless otherwise noted, the analytical results for all soil samples are reported on a wet weight basis. All analytical analyses were performed under NELAP guidelines unless noted by a data qualifier.

Any holding time exceedances, deviations from the method specifications or deviations from Origins Laboratory's Standard Operating Procedures are outlined in the case narrative.

Thank you for selecting Origins for your analytical needs. Please contact us with any questions concerning this report, or if we can help with anything at all.

Origins Laboratory, Inc.  
303.433.1322  
o-squad@oelabinc.com



1725 Elk Place, Denver, CO 80211 | Phone: 303.433.1322 | Fax: 303.265.9645

Eagle Environmental Consulting, Inc.

8000 W 44th Ave

Wheat Ridge CO 80033

Martin C Eckert III

Project Number: [none]

Project: Noble - Shable #24-20

### CROSS REFERENCE REPORT

Sample ID	Laboratory ID	Matrix	Date Sampled	Date Received
Background-01@3'	Y205426-01	Soil	May 3, 2022 11:15	05/16/2022 17:40

Origins Laboratory, Inc.



*The results in this report apply to the samples analyzed in accordance with the chain of custody document. This analytical report must be reproduced in its entirety.*



Eagle Environmental Consulting, Inc.  
8000 W 44th Ave  
Wheat Ridge CO 80033

Martin C Eckert III  
Project Number: [none]  
Project: Noble - Shable #24-20

Origins Laboratory

F-012207-01-R1  
Effective Date: 01/09/12

**Sample Receipt Checklist**

Origins Work Order: Y205426 Client: Eagle  
Client Project ID: Shable 24-20

Checklist Completed by: JA Shipped Via: HD  
(UPS, FedEx, Hand Delivered, Pick-up, etc.)  
Date/time completed: 5/17/22 Airbill #: N/A

Matrix(s) Received: (Check all that apply): X Soil/Solid      Water      Other:     

Cooler Number/Temperature: 1 / 10.7 °C      °C      °C (Describe)      °C

Thermometer ID: T004

Requirement Description	Yes	No	N/A	Comments (if any)
If samples require cooling, was the temperature between 0°C to ≤ 6°C <sup>(1)</sup> ?		<input checked="" type="checkbox"/>		
Is there ice present (document if blue ice is used)	<input checked="" type="checkbox"/>			
Are custody seals present on cooler? (if so, document in comments if they are signed and dated, broken or intact)		<input checked="" type="checkbox"/>		
Are custody seals present on each sample container? (if so, document in comments if they are signed and dated, broken or intact)		<input checked="" type="checkbox"/>		
Were all samples received intact <sup>(1)</sup> ?	<input checked="" type="checkbox"/>			
Was adequate sample volume provided <sup>(1)</sup> ?	<input checked="" type="checkbox"/>			
Are short holding time analytes or samples with HTs due within 48 hours present <sup>(1)</sup> ?		<input checked="" type="checkbox"/>		
Is a chain-of-custody (COC) present and filled out completely <sup>(1)</sup> ?	<input checked="" type="checkbox"/>			
Does the COC agree with the number and type of sample bottles received <sup>(1)</sup> ?	<input checked="" type="checkbox"/>			
Do the sample IDs on the bottle labels match the COC <sup>(1)</sup> ?	<input checked="" type="checkbox"/>			
Is the COC properly relinquished by the client with date and time recorded <sup>(1)</sup> ?	<input checked="" type="checkbox"/>			
For volatiles in water – is there headspace (> ¼ inch bubble) present? If yes, contact client and note in narrative.			<input checked="" type="checkbox"/>	
Are samples preserved that require preservation and was it checked <sup>(1)</sup> ? (note ID of confirmation instrument used in comments) / (preservation is not confirmed for subcontracted analyses in order to insure sample integrity)/(pH <2 for samples preserved with HNO <sub>3</sub> , HCL, H <sub>2</sub> SO <sub>4</sub> ) / (pH >10 for samples preserved with NaAsO <sub>2</sub> ·NaOH, ZnAc·NaOH)			<input checked="" type="checkbox"/>	
Additional Comments (if any):				

<sup>(1)</sup>If NO, then contact the client before proceeding with analysis and note date/time and person contacted as well as the corrective action to in the additional comments (above) and the case narrative.

Reviewed by (Project Manager) JP Date/Time Reviewed 5/18/22

Origins Laboratory, Inc.

*J. Bynon*

The results in this report apply to the samples analyzed in accordance with the chain of custody document. This analytical report must be reproduced in its entirety.

Eagle Environmental Consulting, Inc.  
8000 W 44th Ave  
Wheat Ridge CO 80033

Martin C Eckert III  
Project Number: [none]  
Project: Noble - Shable #24-20

## Background-01@3'

5/3/2022 11:15:00AM

Analyte	Result	Reporting Limit	Units	Dilution	Batch	Analyst	Prepared	Analyzed	Notes
---------	--------	-----------------	-------	----------	-------	---------	----------	----------	-------

## Origins Laboratory, Inc. Y205426-01 (Soil)

### Metals by Saturated Paste by EPA 6010

Calcium	3.96	0.499	meq/L	10	[CALC]	KAP	05/18/2022	05/19/2022
Magnesium	2.44	0.823	"	"	"	KAP	"	"
Sodium	4.05	0.435	"	"	"	KAP	"	"

### pH in Soil by 9045D

pH	8.09		pH Units	1	B2E1804	ACC	05/18/2022	05/19/2022
----	------	--	----------	---	---------	-----	------------	------------

### SAR by 20B Saturated Paste

SAR	2.26		SAR	1	B2E1803	KAP	05/18/2022	05/19/2022
-----	------	--	-----	---	---------	-----	------------	------------

### Specific Conductance Mod. 9050A

Specific Conductance (EC)	1.25	0.00500	mmhos/cm	1	B2E1804	ACC	05/18/2022	05/19/2022
---------------------------	------	---------	----------	---	---------	-----	------------	------------

Origins Laboratory, Inc.



The results in this report apply to the samples analyzed in accordance with the chain of custody document. This analytical report must be reproduced in its entirety.



Eagle Environmental Consulting, Inc.  
8000 W 44th Ave  
Wheat Ridge CO 80033

Martin C Eckert III  
Project Number: [none]  
Project: Noble - Shable #24-20

**Saturated Paste - Quality Control**  
**Origins Laboratory, Inc.**

Analyte	Result	Reporting Limit	Units	Spike Level	Source Result	%REC	%REC Limits	RPD	RPD Limit	Notes
<b>Batch B2E1804 - NO PREP</b>										
<b>Blank (B2E1804-BLK1)</b>					Prepared: 05/18/2022 Analyzed: 05/19/2022					
Specific Conductance (EC)	0.00100	0.0300	mmhos/cm							
pH	0.00		pH Units							
<b>Duplicate (B2E1804-DUP1)</b>					<b>Source: Y205049-01</b>		Prepared: 05/18/2022 Analyzed: 05/19/2022			
Specific Conductance (EC)	0.864	0.0300	mmhos/cm		0.988			13.4	25	
pH	8.05		pH Units		8.18			1.60	25	

Origins Laboratory, Inc.



*The results in this report apply to the samples analyzed in accordance with the chain of custody document. This analytical report must be reproduced in its entirety.*

Eagle Environmental Consulting, Inc.

8000 W 44th Ave

Wheat Ridge CO 80033

Martin C Eckert III

Project Number: [none]

Project: Noble - Shable #24-20

### Notes and Definitions

ND Analyte NOT DETECTED at or above the reporting limit

RPD Relative Percent Difference

All soil results are reported at a wet weight basis.

Origins Laboratory, Inc.



*The results in this report apply to the samples analyzed in accordance with the chain of custody document. This analytical report must be reproduced in its entirety.*