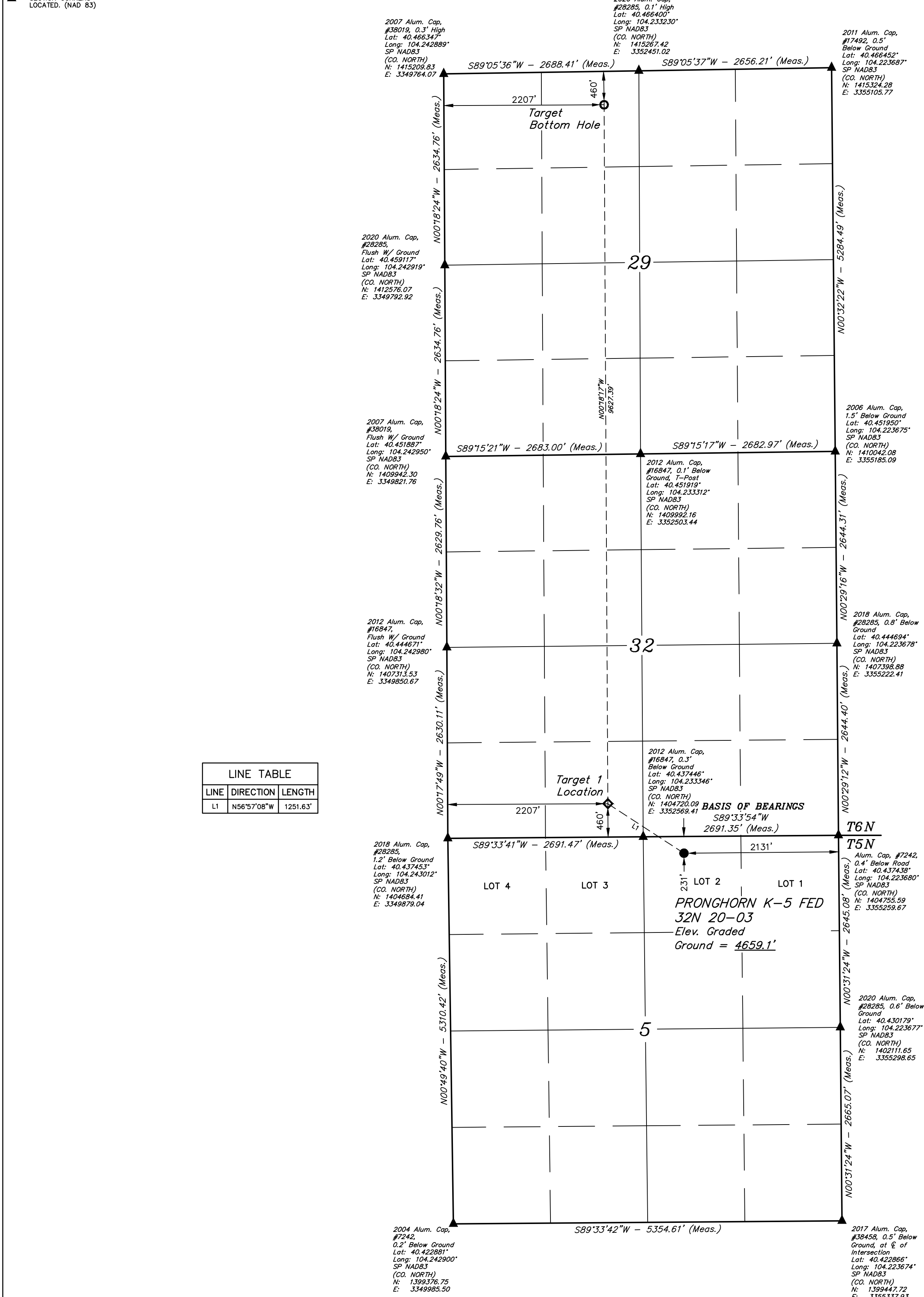


● = PROPOSED WELLHEAD.
 ○ = TARGET BOTTOM HOLE.
 ◆ = TARGET 1 LOCATION.
 ▲ = SECTION CORNERS
 LOCATED. (NAD 83)

LINE TABLE		
LINE	DIRECTION	LENGTH
L1	N56°57'08"W	1251.63'




NAD 83 (SURFACE LOCATION)	NAD 83 (TARGET 1 LOCATION)	NAD 83 (TARGET BOTTOM HOLE)
LATITUDE = 40°26'12.52" (40.436812°)	LATITUDE = 40°26'19.36" (40.438710°)	LATITUDE = 40°27'54.46" (40.465128°)
LONGITUDE = 104°13'52.80" (104.231334°)	LONGITUDE = 104°14'06.29" (104.235808°)	LONGITUDE = 104°14'05.87" (104.234965°)
STATE PLANE 9803 NAD 83 (CO. NORTH)	STATE PLANE 1405 NAD 83 (CO. NORTH)	STATE PLANE 1403 NAD 83 (CO. NORTH)
N: 1404497.03; E: 3353132.75	N: 1405173.49; E: 3352080.14	N: 1414797.25; E: 3351975.02



BASIS OF ELEVATION
OPUS SOLUTION GENERATED NAVD 88

UELS, LLC
Corporate Office * 85 South 200 East
Vernal, UT 84078 * (435) 789-1017

**UJNTAH**
SANGRE DE TORO A CANTO SUBMUNDO



REGISTERED LAND SURVEYOR
REGISTRATION NO. 28285
STATE OF COLORADO

REV: 2 08-15-22 K.C. (LATERAL CHANGE)

**BONANZA CREEK ENERGY
OPERATING COMPANY, LLC**

**PRONGHORN K-5 FED 30N-20-03
LOT 2, SECTION 5, T5N, R61W, 6th P.M.
WELD COUNTY, COLORADO**

SURVEYED BY	GREG WEIMER	07-07-20	SCALE
DRAWN BY	C.IVIE	07-07-20	1" = 1000'

WELL LOCATION PLAT