

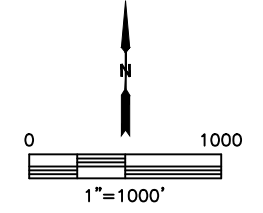
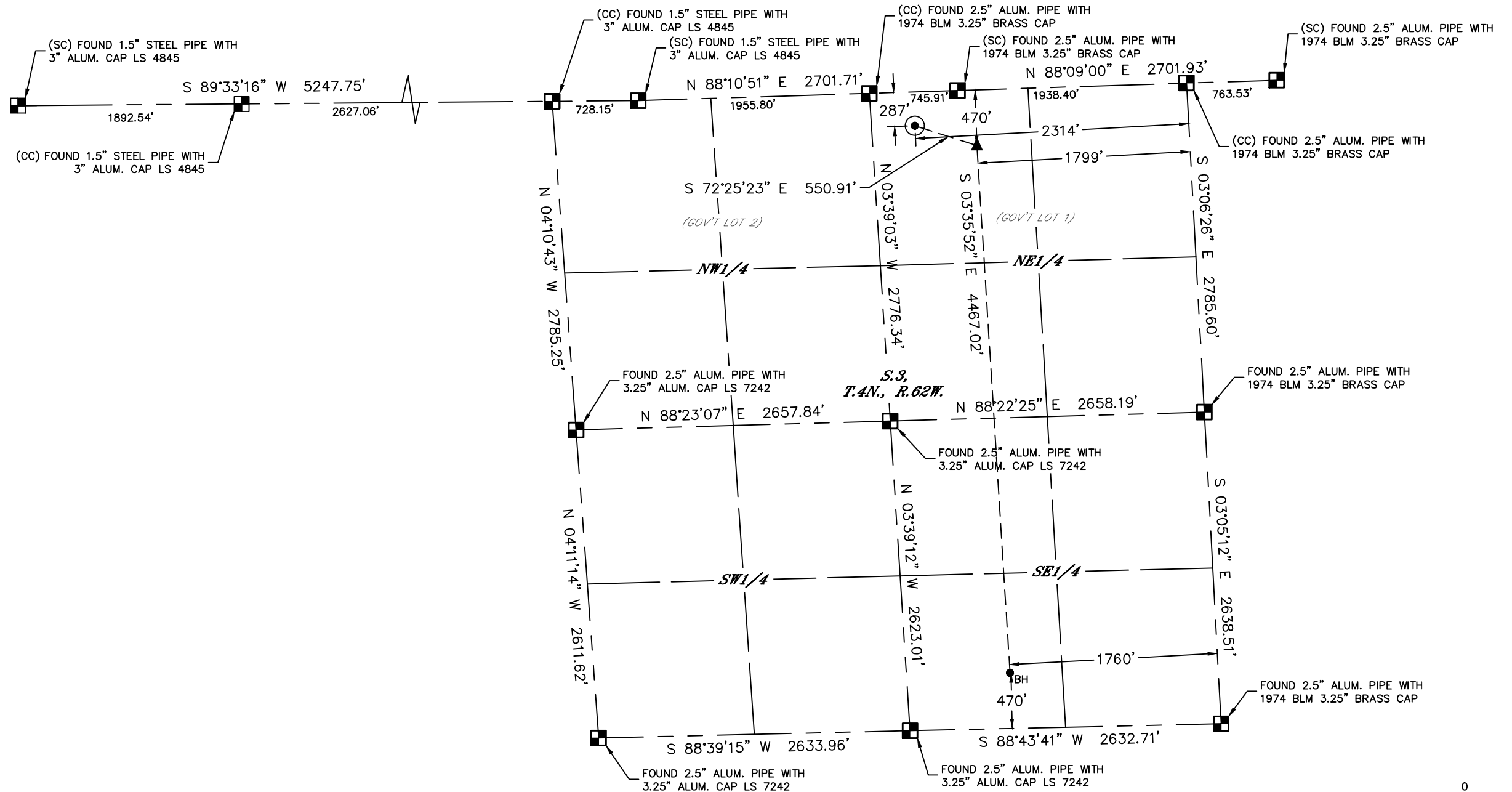


Lat40°, Inc. 6250 W. 10th Street, Unit 2, Greeley, CO 970-515-5294

WELL LOCATION CERTIFICATE

STATE SEVENTY HOLES P31-T34-3HN
BONANZA CREEK ENERGY OPERATING CO LLC

Q: NW4NE4
SECTION: 3
TOWNSHIP: 4N
RANGE: 62W
6TH. P.M.
WELD COUNTY, CO

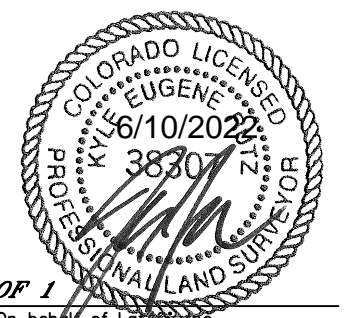


- LEGEND**
- = ALIQUOT MONUMENT AS DESCRIBED
 - = CALCULATED POSITION
 - ⊙ = SURFACE HOLE LOCATION (SHL)
 - ▲ = ENTRY POINT LOCATION (EP)
 - ◆ = TOP OF PRODUCTIVE ZONE (PZONE)
 - = BOTTOM HOLE LOCATION (BHL)
 - ⊕ = EXISTING WELL
 - ⊖ = ABANDONED WELL

CLIENT: BONANZA CREEK ENERGY OPERATING Co. LLC					LANDMAN: TROY OWENS					
INSTRUMENT OPERATOR: RYAN CHAMPION					SURVEY DATE: 5/20/2022		SURFACE USE: RANGELAND			
SHL FOOTAGE	SHL LAT°	SHL LONG°	SHL PDOP	SHL ELEV (FT.)	SHL 1/4/1/4	SHL S-T-R				
287	FNL	2314	FEL	40.34820	-104.31111	2.2	4549	NWNE	3-4-62	
BHL FOOTAGE	BHL LAT°	BHL LONG°	BHL S-T-R	EP LAT°	EP LONG°	EP S-T-R				
470	FSL	1760	FEL	40.33548	-104.30844	3-4-62	40.34772	-104.30923	3-4-62	

NOTE:

- Bearings shown are Grid Bearings of the Colorado State Plane Coordinate System, North Zone, North American Datum 1983. The lineal dimensions as contained herein are based upon the "U.S. Survey Foot."
- Distances to section lines measured at 90 degrees from said section lines.
- Ground elevations are based on an observed GPS elevation (NAVD 1988 DATUM).
- Latitude and Longitude shown are (NAD 83 DATUM).
- IMPROVEMENTS: See LOCATION DRAWING for all visible improvements.
- This map does not represent a boundary survey.



SHEET 1 OF 1
 Kyle E. Rutz—On behalf of Lat40°, Inc.
 Colorado Licensed Professional Land Surveyor No. 38307
 DATE: 6/10/2022
 PROJECT#: 2022166