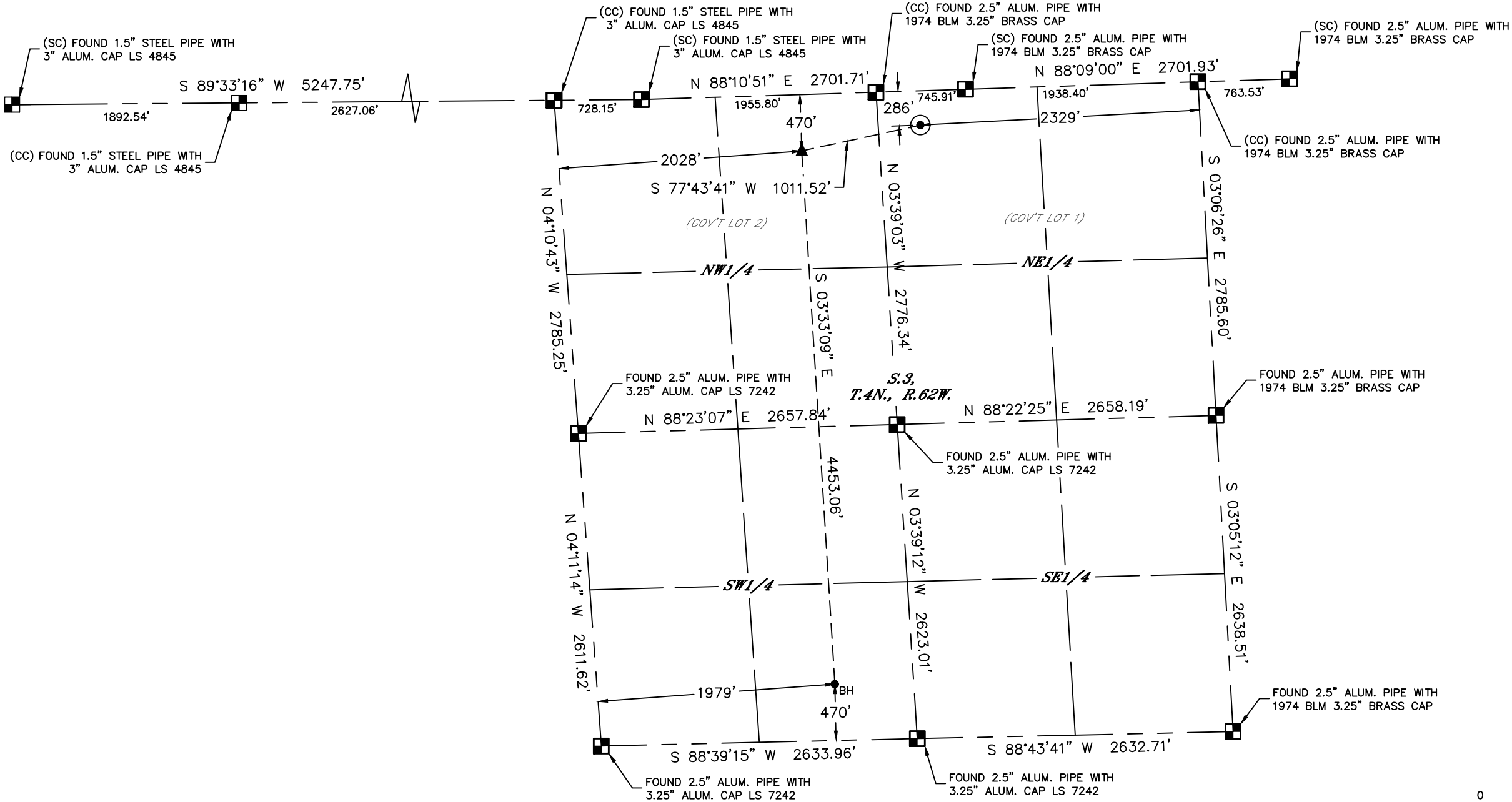




Lat40°, Inc. 6250 W. 10th Street, Unit 2, Greeley, CO 970-515-5294

WELL LOCATION CERTIFICATE
STATE SEVENTY HOLES 21-24-3HN
BONANZA CREEK ENERGY OPERATING CO LLC

Q: NW4NE4
SECTION: 3
TOWNSHIP: 4N
RANGE: 62W
6TH. P.M.
WELD COUNTY, CO

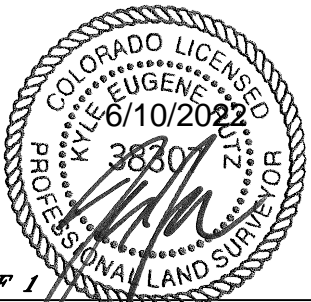


- LEGEND
- = ALIQUOT MONUMENT AS DESCRIBED
 - = CALCULATED POSITION
 - ⊙ = SURFACE HOLE LOCATION (SHL)
 - ▲ = ENTRY POINT LOCATION (EP)
 - ◆ = TOP OF PRODUCTIVE ZONE (PZONE)
 - _{BH} = BOTTOM HOLE LOCATION (BHL)
 - ⊕ = EXISTING WELL
 - ⊖ = ABANDONED WELL

CLIENT: BONANZA CREEK ENERGY OPERATING Co. LLC						LANDMAN: TROY OWENS		
INSTRUMENT OPERATOR: RYAN CHAMPION						SURVEY DATE: 5/20/2022		
SHL FOOTAGE		SHL LAT °		SHL LONG °		SHL PDOP	SHL ELEV (FT.)	SURFACE USE: RANGELAND
286	FNL	2329	FEL	40.34820	-104.31116	2.2	4549	NWNE 3-4-62
BHL FOOTAGE		BHL LAT °		BHL LONG °		BHL S-T-R	EP LAT °	EP LONG °
470	FSL	1979	FWL	40.33544	-104.31394	3-4-62	40.34764	-104.31471
							EP S-T-R	3-4-62

NOTE:

- 1) Bearings shown are Grid Bearings of the Colorado State Plane Coordinate System, North Zone, North American Datum 1983. The lineal dimensions as contained herein are based upon the "U.S. Survey Foot."
- 2) Distances to section lines measured at 90 degrees from said section lines.
- 3) Ground elevations are based on an observed GPS elevation (NAVD 1988 DATUM).
- 4) Latitude and Longitude shown are (NAD 83 DATUM).
- 5) IMPROVEMENTS: See LOCATION DRAWING for all visible improvements.
- 6) This map does not represent a boundary survey.



SHEET 1 OF 1
Kyle E. Rutz—On behalf of Lat40°, Inc.
Colorado Licensed Professional Land Surveyor No. 38307
DATE: 6/10/2022
PROJECT#: 2022166