

Re: [EXTERNAL] RE: USA 1-8MR photos (from 7/13/22)

BJ

Byers, James C <jbyers@blm.gov>

To Trish Harrison

↩ Reply

↩ Reply All

➡ Forward

...

Wed 8/10/2022 4:43 PM

If there are problems with how this message is displayed, click here to view it in a web browser.

1981 APD Plats.zip

5 MB

▼

Trish,

I checked the well file.

As attached plat from APD shows there was a mud reserve **pit** for cuttings and a burn "flare" it.

The well was never produced so there was/is no evidence or need for a production **pit** - no need to ever have one since hydrocarbons were not produced.

I hope this helps.

From: Trish Harrison <trishharrison@eis-llc.com>
Sent: Tuesday, August 9, 2022 1:55 PM
To: Byers, James C <jbyers@blm.gov>
Subject: RE: [EXTERNAL] RE: USA 1-8MR photos (from 7/13/22)

Attached is the COGCC Form 27 for the USA 1-8.

General Comments

<u>User Group</u>	<u>Comment</u>	<u>Comment Date</u>
Environmental	Requested closure of Pit Facility ID #116432 is NOT approved at this time. Operator needs to consult with BLM records to determine whether or not the facility had been constructed. See COAs above.	05/04/2022

Total: 1 comment(s)

the reservoir ditch one mile west of DeBeque on "V.20" Road. Water rights will be purchased from W.T. Spears, 0327 - 222 Road, DeBeque, Colorado 81630 (303) 283-5348. And Carlos Carpenter, George Anderson, and Bill Prather of DeBeque, Colorado.

6. Source of Construction Materials ref. Exhibit B, C, D

7. Fill materials used to construct the location will be derived locally from the cuts needed to build the well pad. Materials for construction will be obtained by consolidation of earth from Methods for Handling Waste Disposal ref. Exhibit D

A mud reserve pit and burn pit will be constructed for containment of wastes. Cuttings will be contained in the reserve pit as well as all drilling fluids and produced fluids. Produced waste fluids will be contained in a pit constructed in accordance with NTL-2B. Sewage will be contained in a chemical type toilet. Trash and all flammable waste materials will be placed in a burn pit and burned with proper supervision. The remaining waste material will be buried under at least 4' of fill upon primary completion of the well.

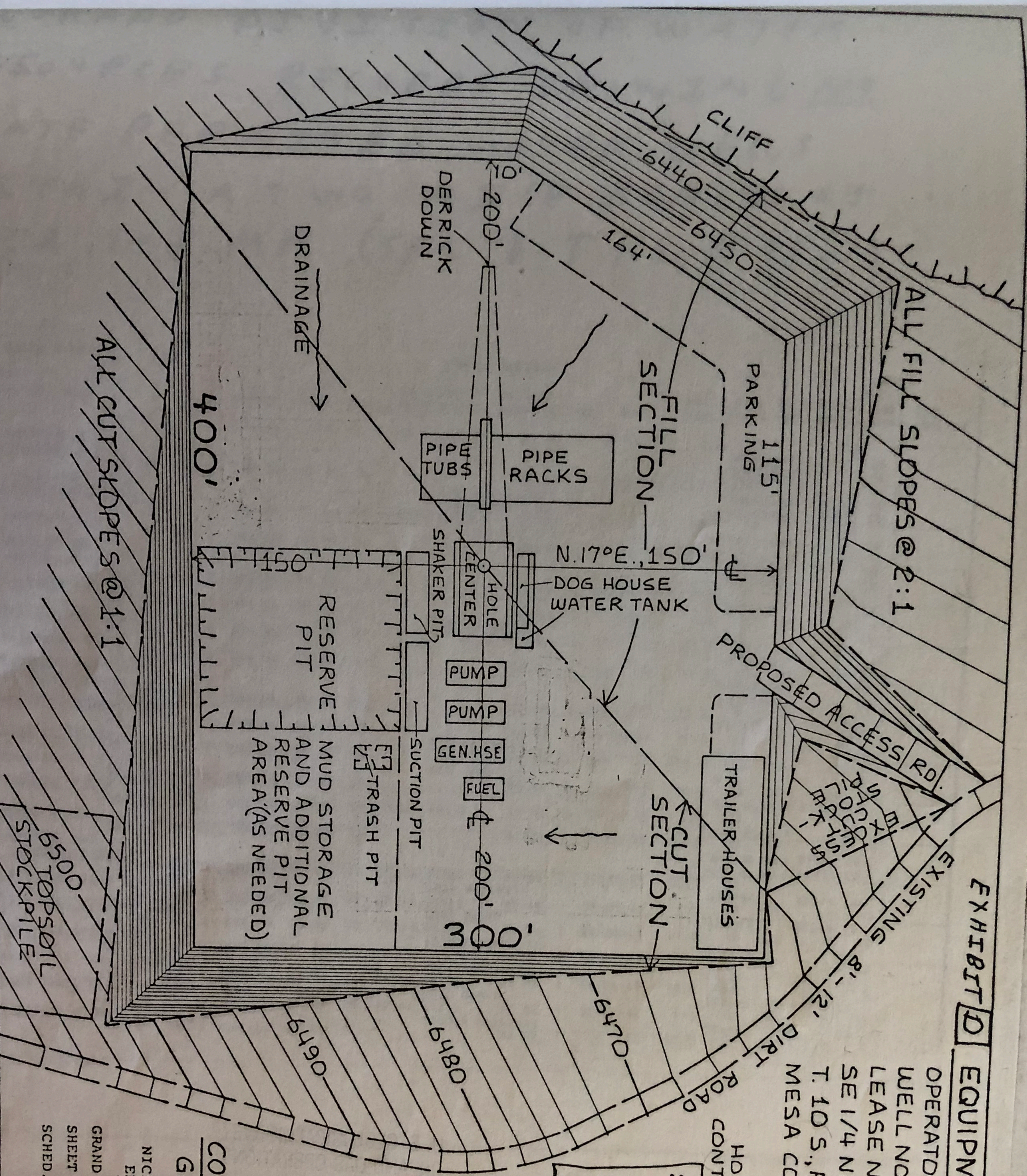
EXHIBIT D EQUIPMENT LOCATION

OPERATOR: COORS ENERGY CO.
WELL NO. USA 1-8MR
LEASE NO.

SE 1/4 NE 1/4, SECTION 8,
T. 10 S., R. 99 W., 6th P.M.,
MESA COUNTY, COLORADO

HORZ. SCALE 1" = 50'
CONTOUR INTERVAL = 2'

SEE ATTACHED
BLUE PRINT FOR
SPECIFIC RIG
DETAIL



PREPARED FOR
COORS ENERGY CO.
GOLDEN, COLO.
BY
NICHOLS ASSOCIATES, INC.
ENGINEERS-SURVEYORS
770 HORIZON DRIVE
GRAND JUNCTION, COLO., 81501
SHEET 4 OF 6 W.O. 2274
SCHD. 2707-081 BY J.L.G.