



Compensated Neutron  
Gamma Ray  
Casing Collar Log

Company	Caerus Piceance LLC.	Country	USA
Well	BJU B26 FED 21D-26-496		
Field	Grand Valley		
County	Garfield		
State	Colorado		
Company	Caerus Piceance LLC.		
Well	BJU B26 FED 21D-26-496		
Field	Grand Valley		
County	Garfield		
State	Colorado		
Country	USA		
Location:	API # : 05-045-24337	Other Services	RCBL
SEC 26 TWP 4S RGE 96W			
Permanent Datum	Ground Level	Elevation	8211'
Log Measured From	Kelly Bushing		
Drilling Measured From	Kelly Bushing		
Elevation			
K.B. 8241'			
D.F. 8240'			
G.L. 8211'			
Date	10-AUG-2022		
Run Number	One		
Depth Driller	12378 FT		
Depth Logger	12267 FT		
Bottom Logged Interval	12264 FT		
Top Log Interval	7800 FT		
Open Hole Size	8.750"		
Type Fluid	Fresh Water		
Density / Viscosity	8.34 lb/gal		
Max. Recorded Temp.	302° F		
Estimated Cement Top	---		
Time Well Ready	ROA		
Time Logger on Bottom	14:00		
Equipment Number	8093		
Location	Grand Junction Colo		
Recorded By	A. Ellsworth		
Witnessed By	R. Tompkins		
Borehole Record			
Run Number	Bit	From	To
	8.75"	Surface	12378'
Tubing Record			
	Size	Wgt/Ft	Top
Casing Record			
Surface String	9.625"	36	Surface
Prot. String	4.5"	11.6	Surface
Production String			
Liner			

<<<< Fold Here >>>>

All interpretations are opinions based on inferences from electrical or other measurements and we cannot and do not guarantee the accuracy or correctness of any interpretation, and we shall not, except in the case of gross or willful negligence on our part, be liable or responsible for any loss, costs, damages, or expenses incurred or sustained by anyone resulting from any interpretation made by any of our officers, agents or employees. These interpretations are also subject to our general terms and conditions set out in our current Price Schedule.

Comments

Log ran as per customer request.  
Depth referenced to Kelly Bushing @ 30FT  
Marker Joint from 7978 FT - 7988 FT  
Log ran from 12264 FT to Surface  
Log ran with 0 PSI surface induced pressure.

Thank you for choosing The Wireline Group!!!



Repeat Pass 5" = 100'

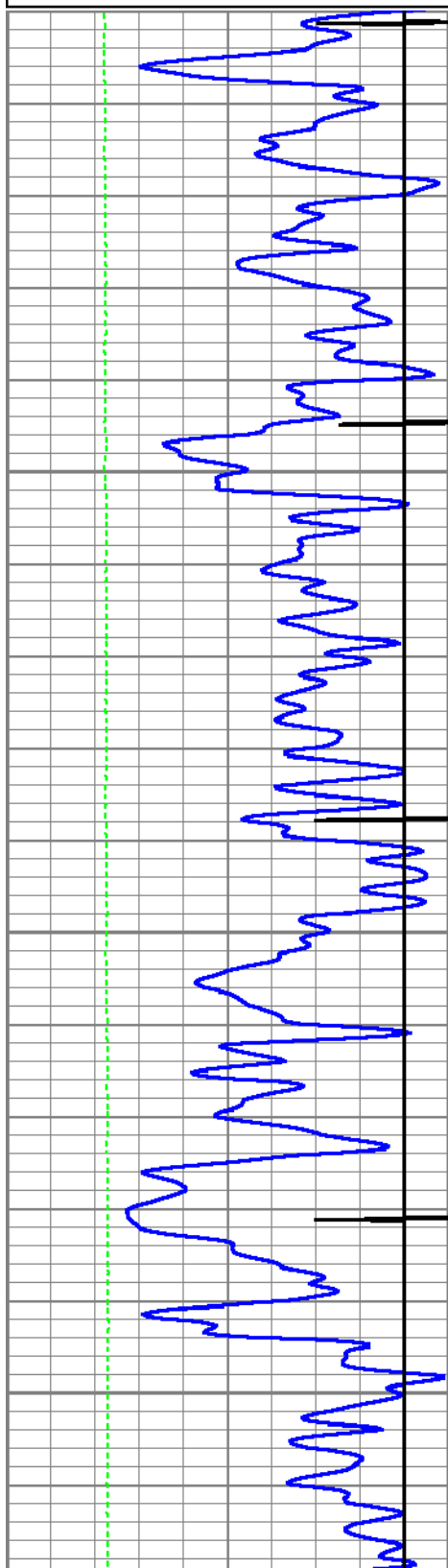
Database File caerus\_bju b26 fed 21d-26-496\_rcbl\_cnl\_8-10-2022.db  
Dataset Pathname main  
Presentation Format twg\_cnl  
Dataset Creation Wed Aug 10 14:16:53 2022  
Charted by Depth in Feet scaled 1:240

0	GR (GAPI)	150
9	CCL	-1
0	Line Tension (lb)	4000

0.3 CNPOR (pu) -0.1

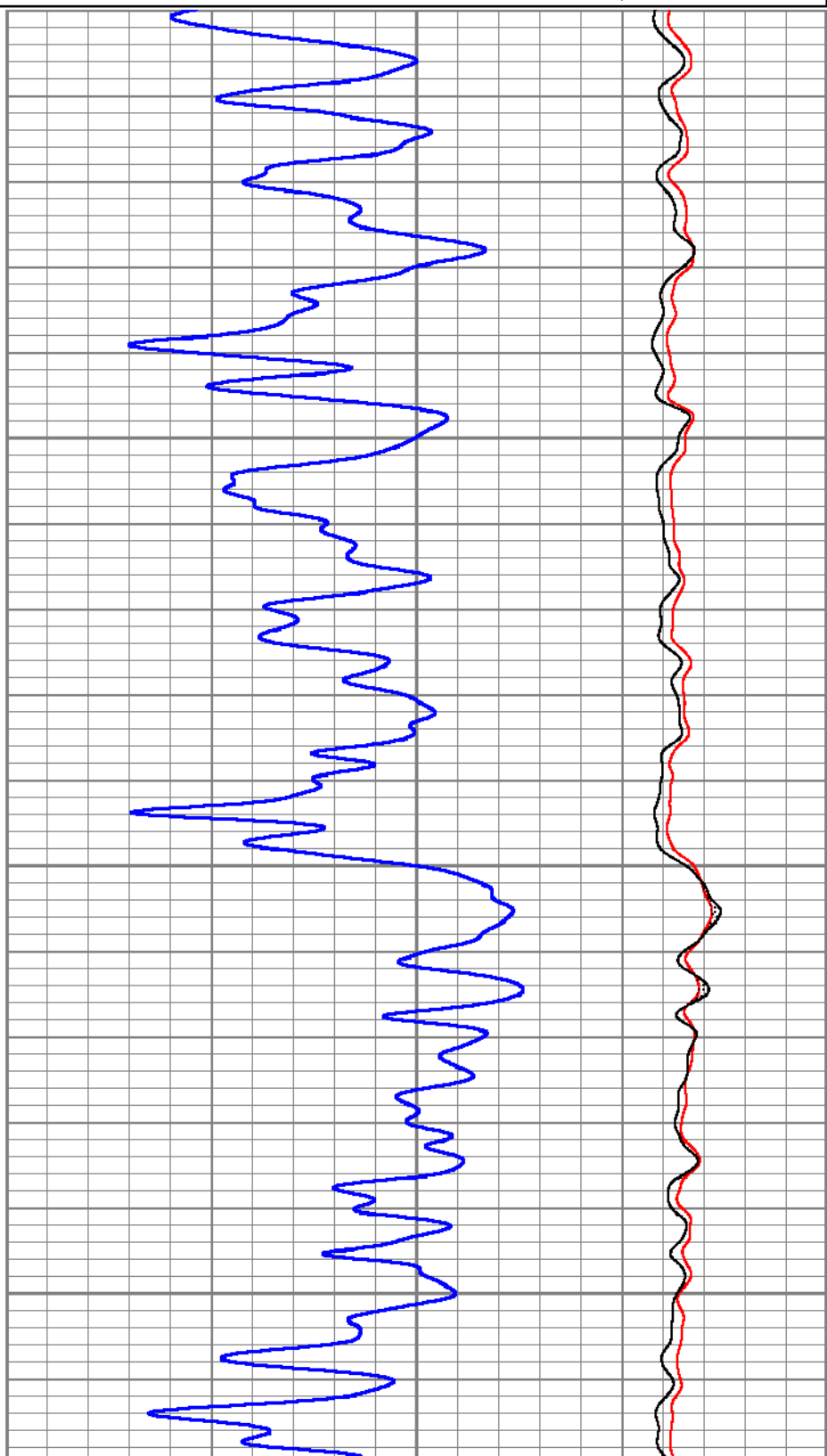
CNLSC  
0 (cps) 1500

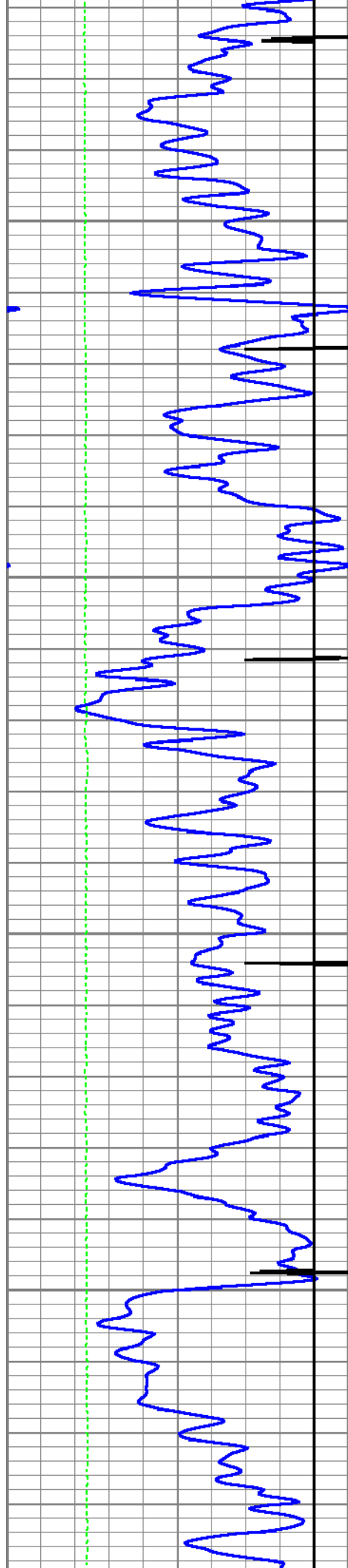
CNSSC  
0 (cps) 7000



7500

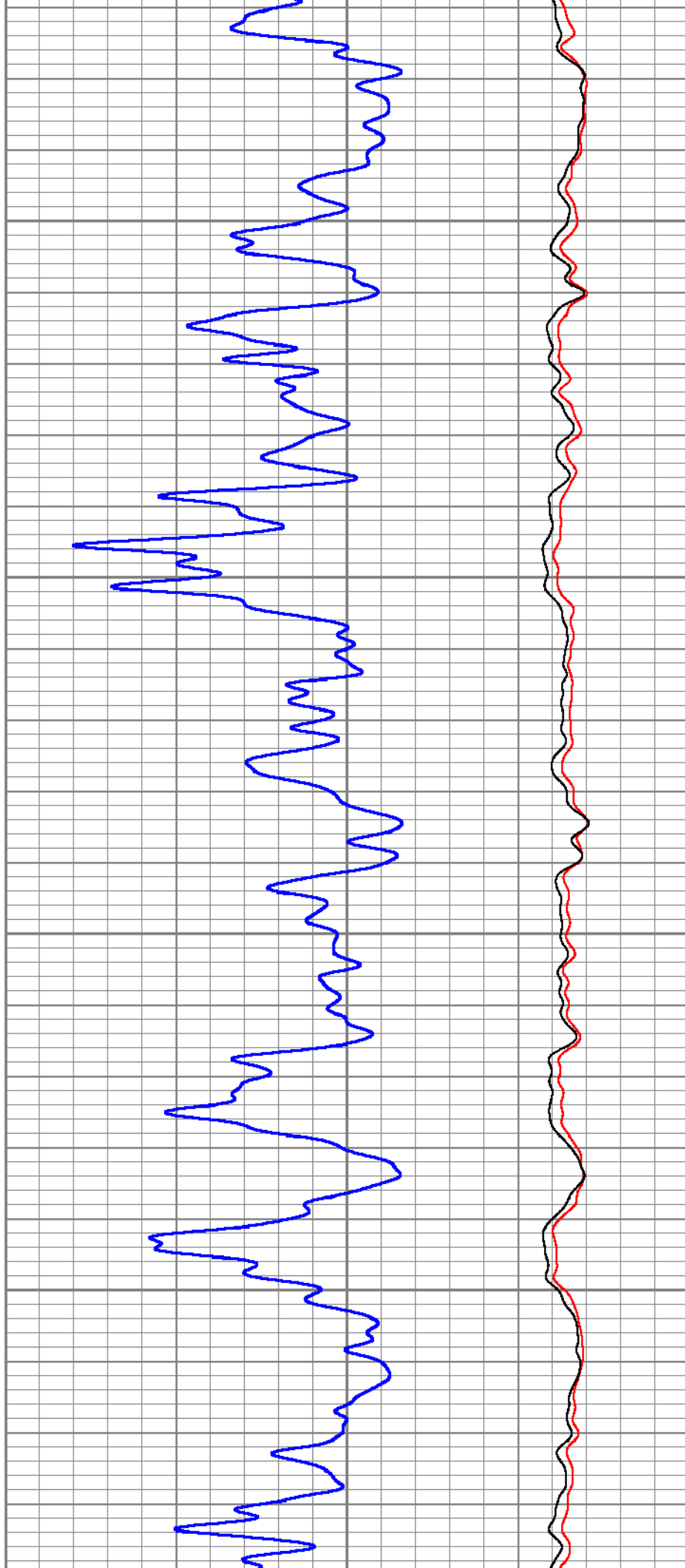
7600

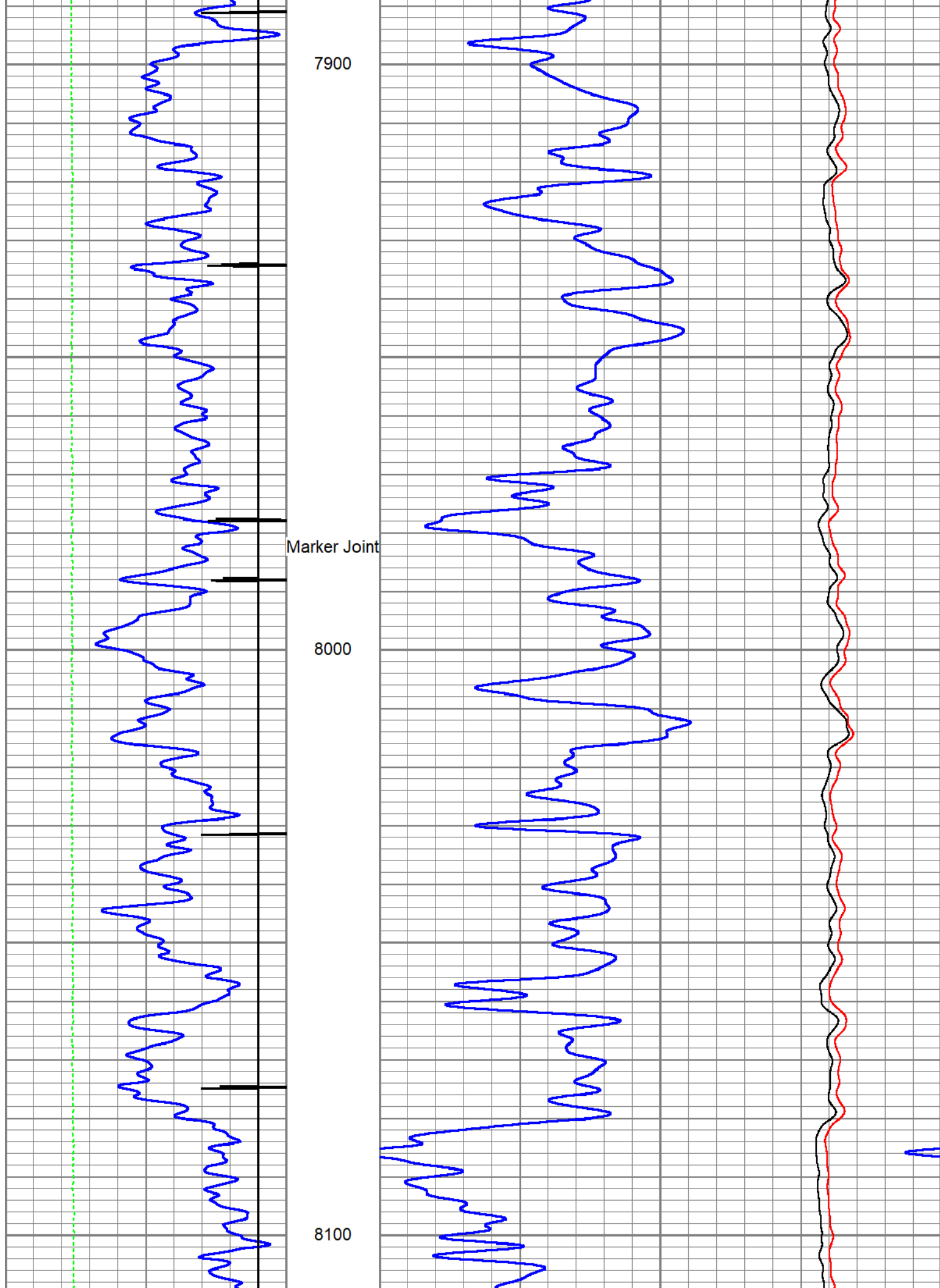


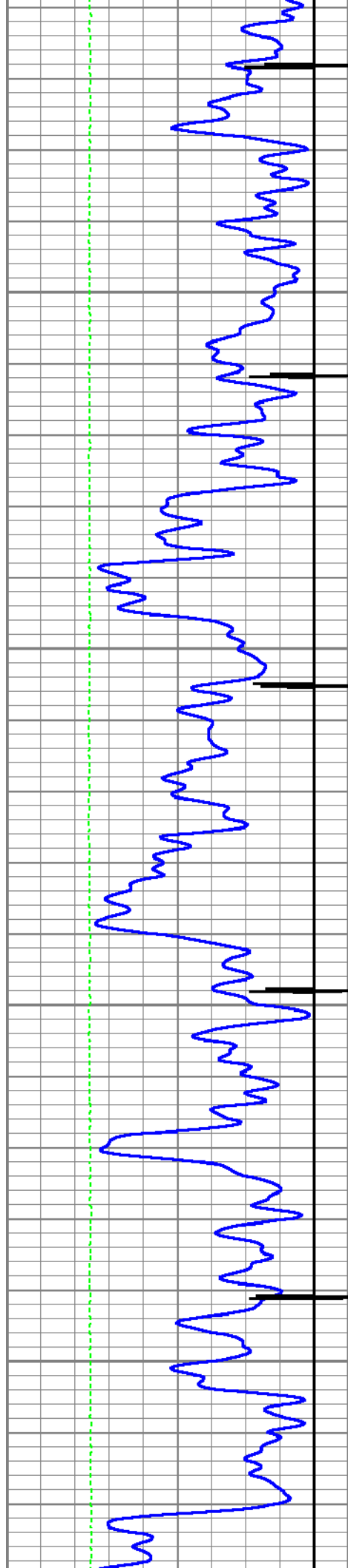


7700

7800

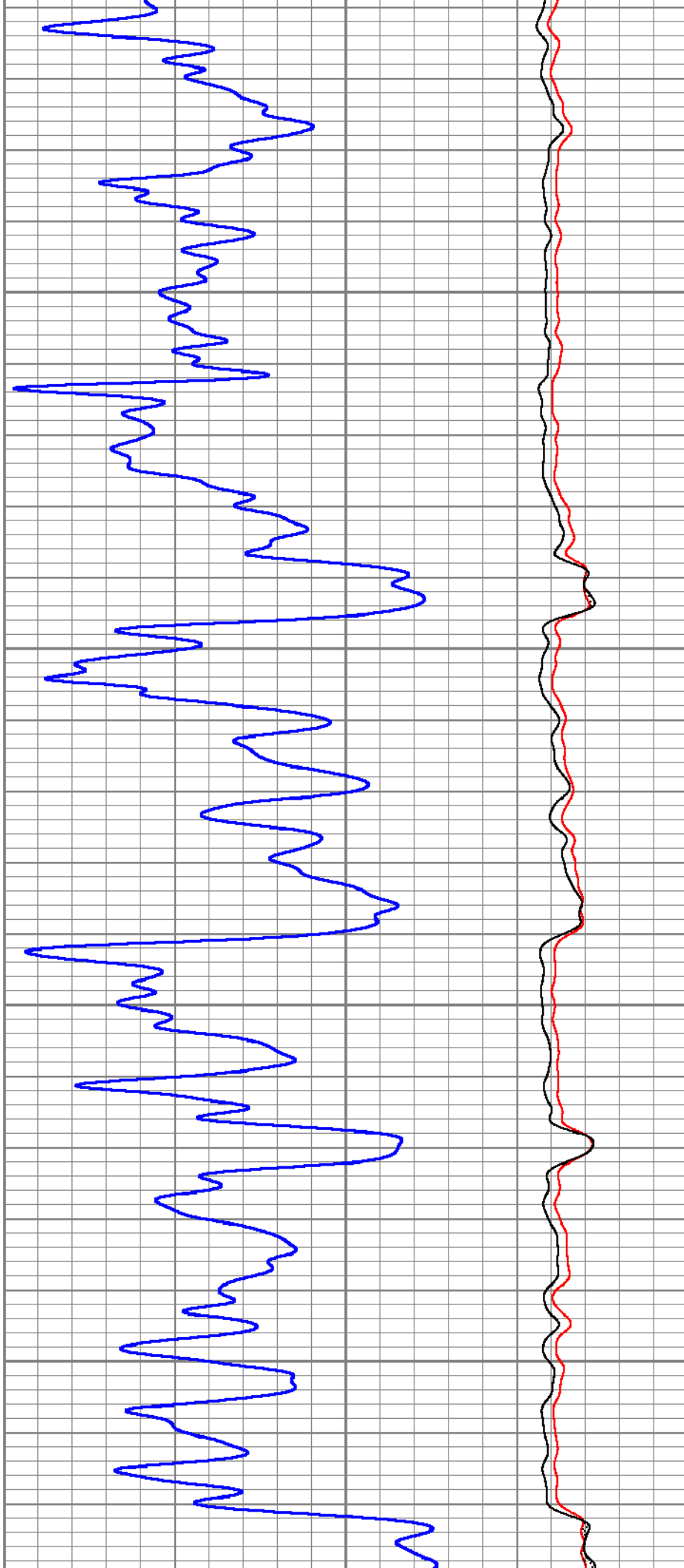


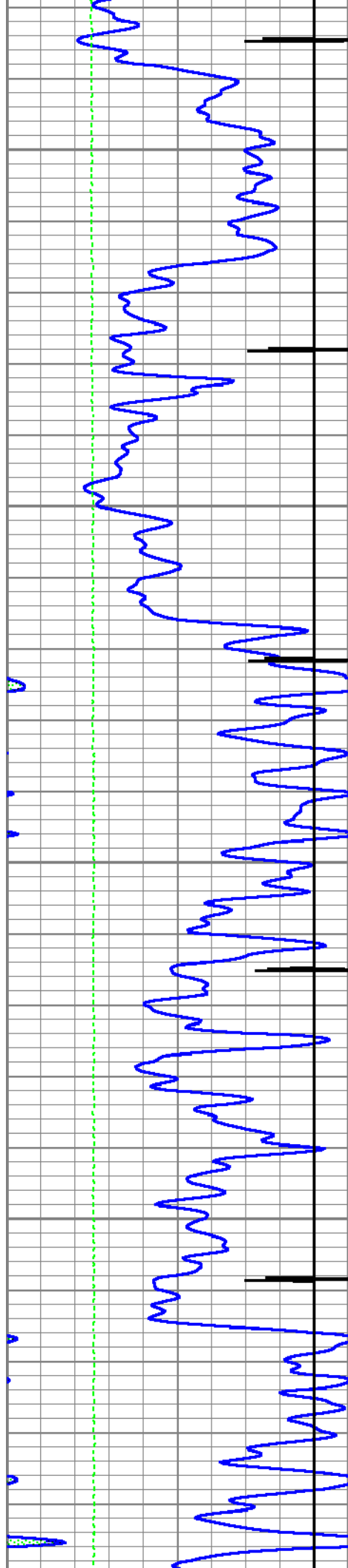




8200

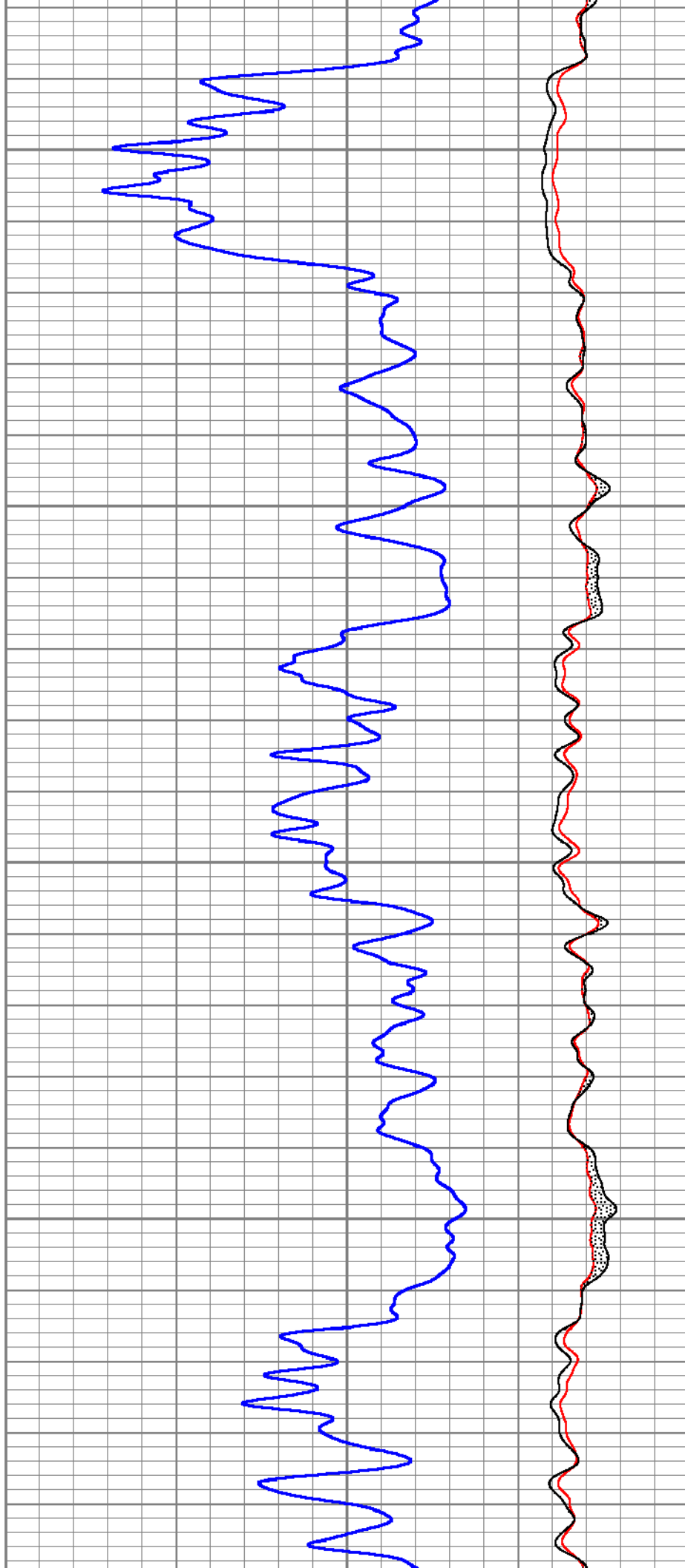
8300

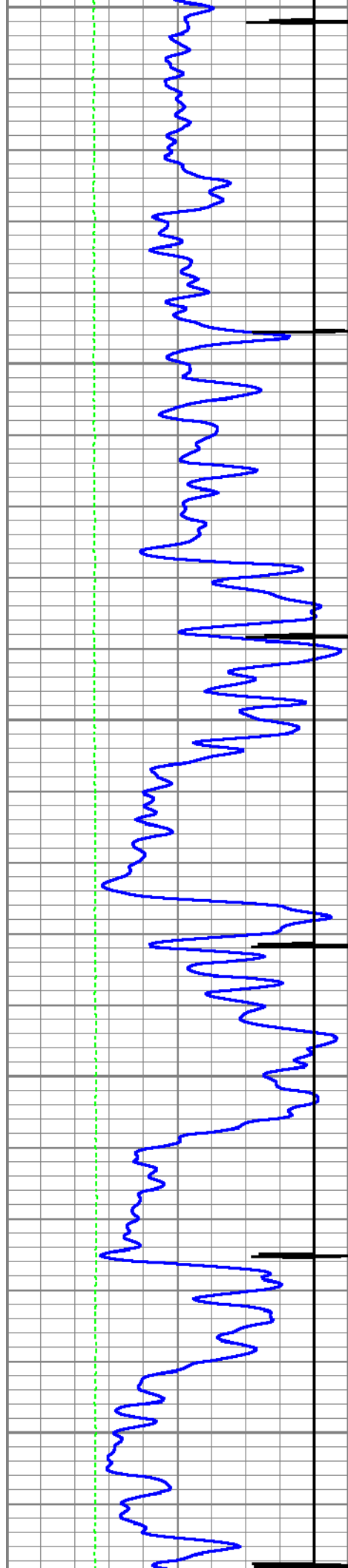




8400

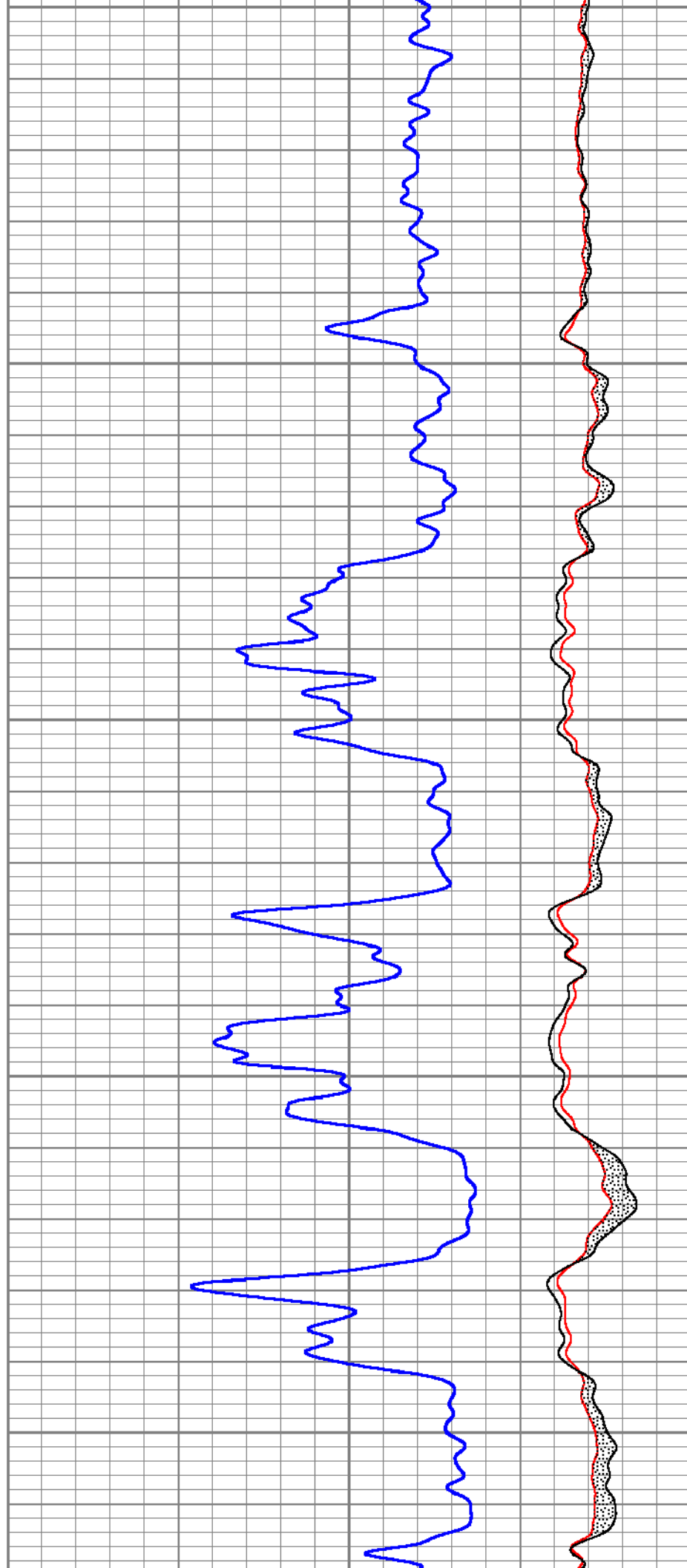
8500

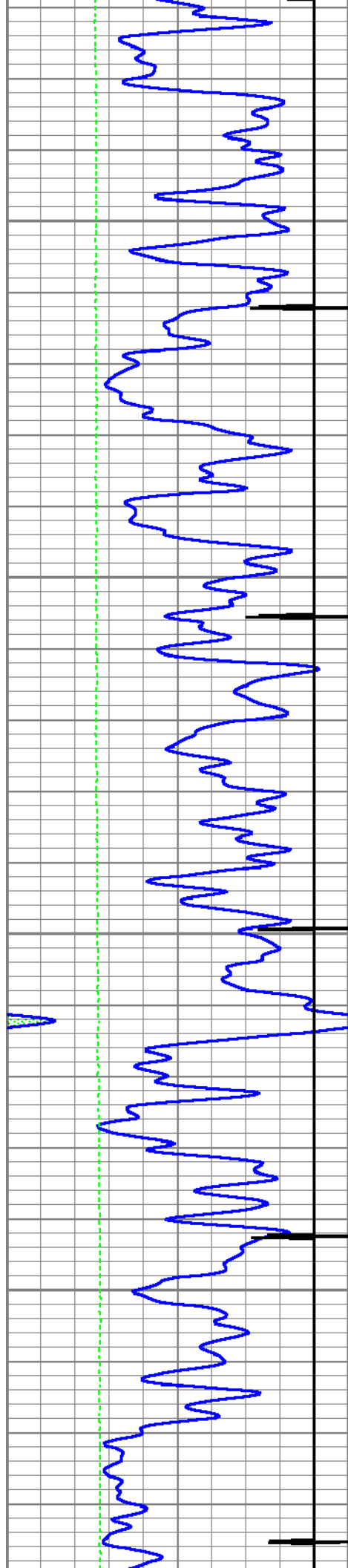




8600

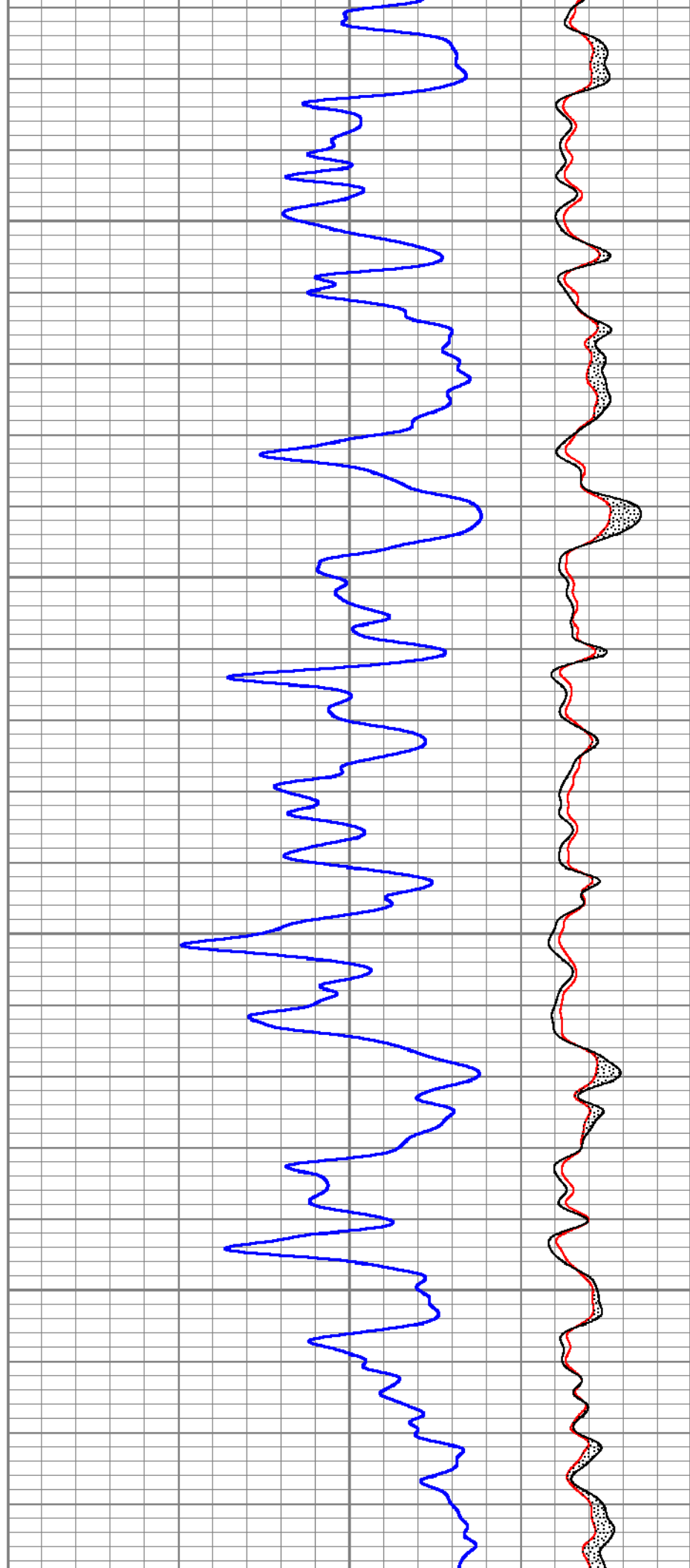
8700



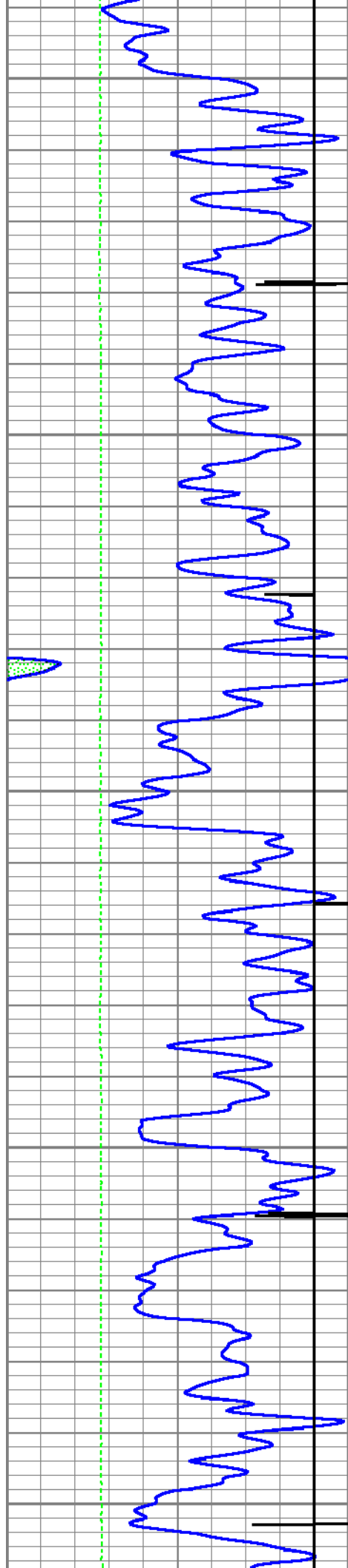


8800

8900



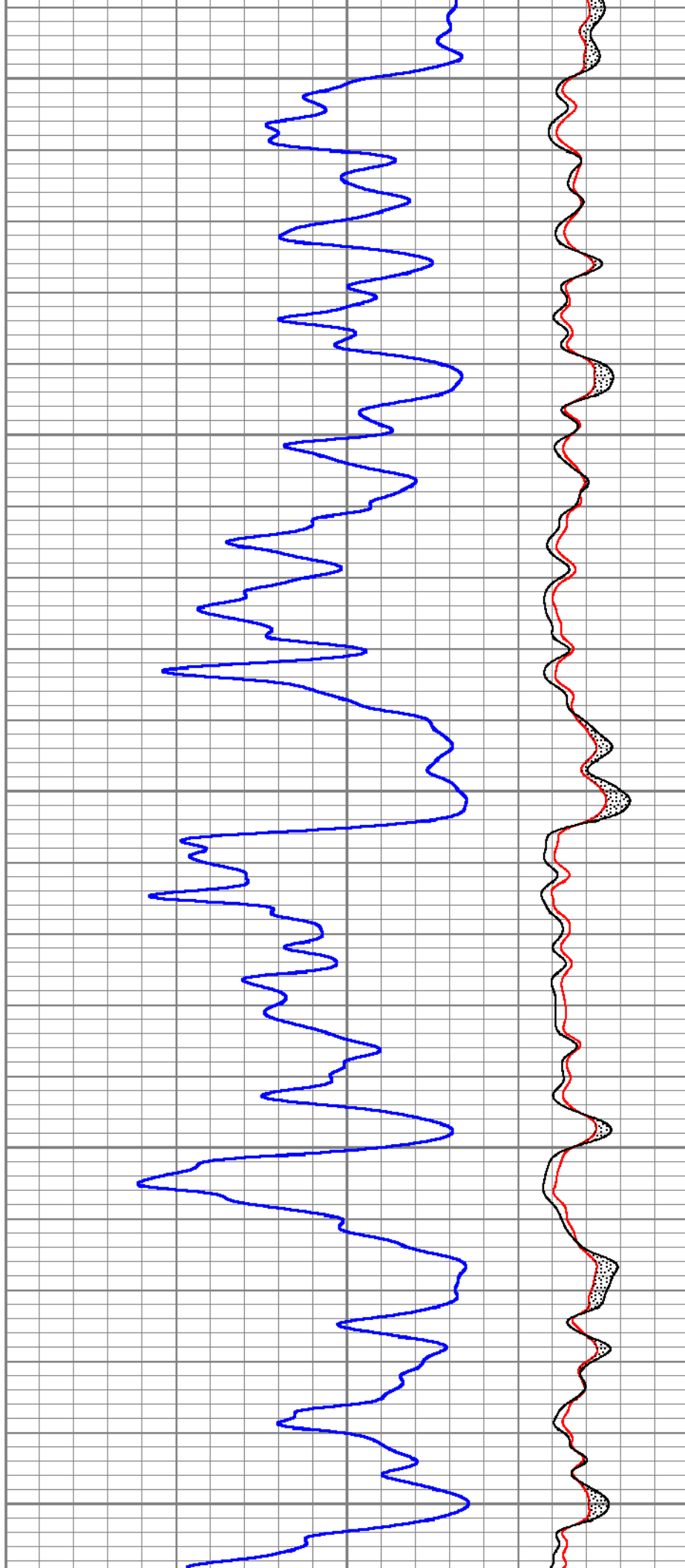


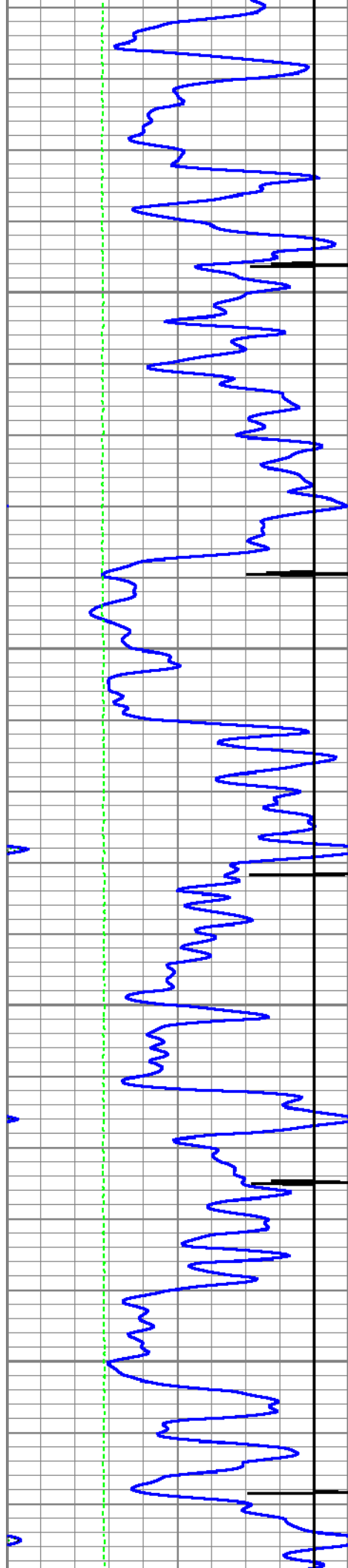


9000

9100

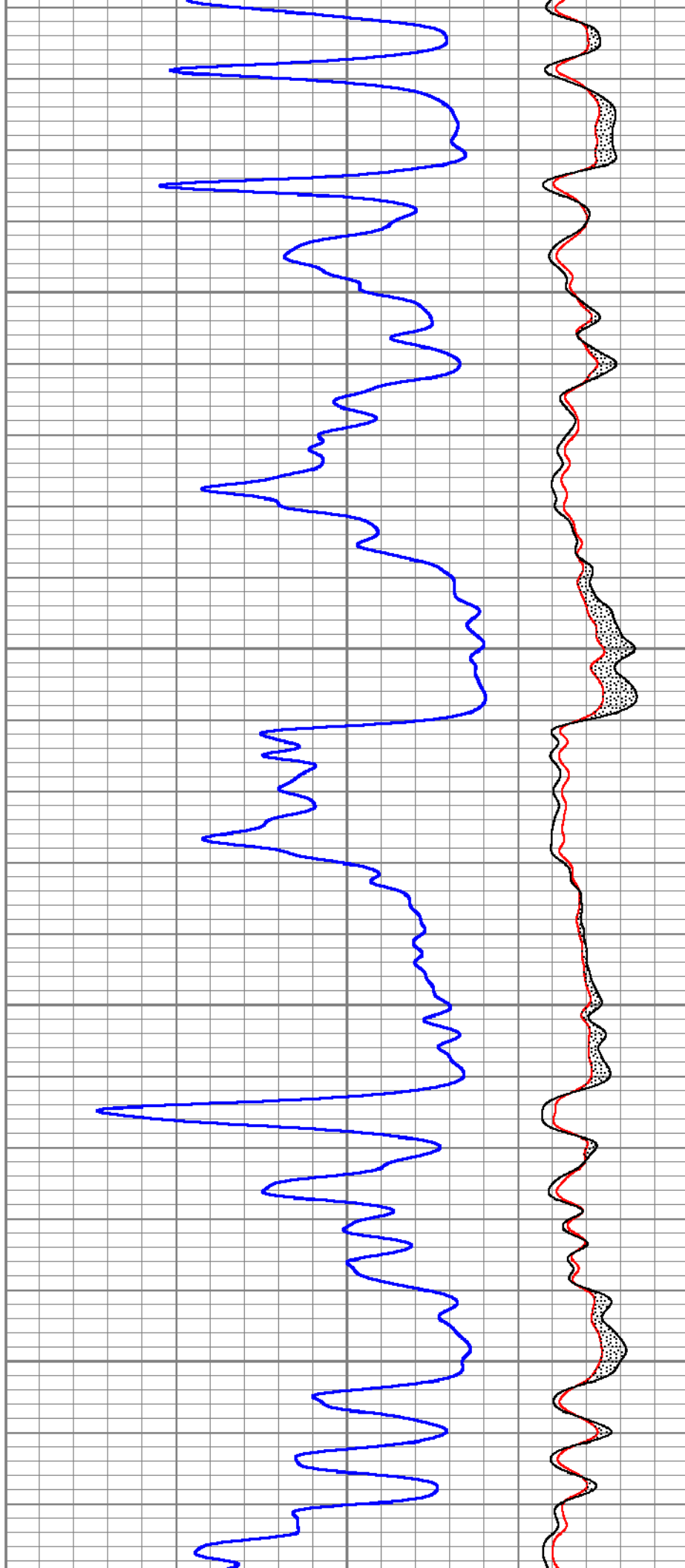
9200

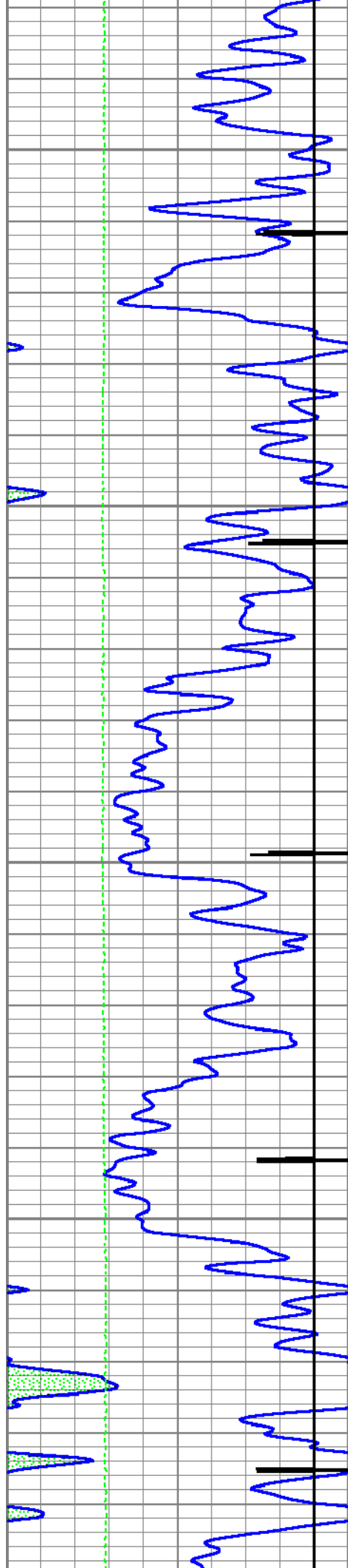




9300

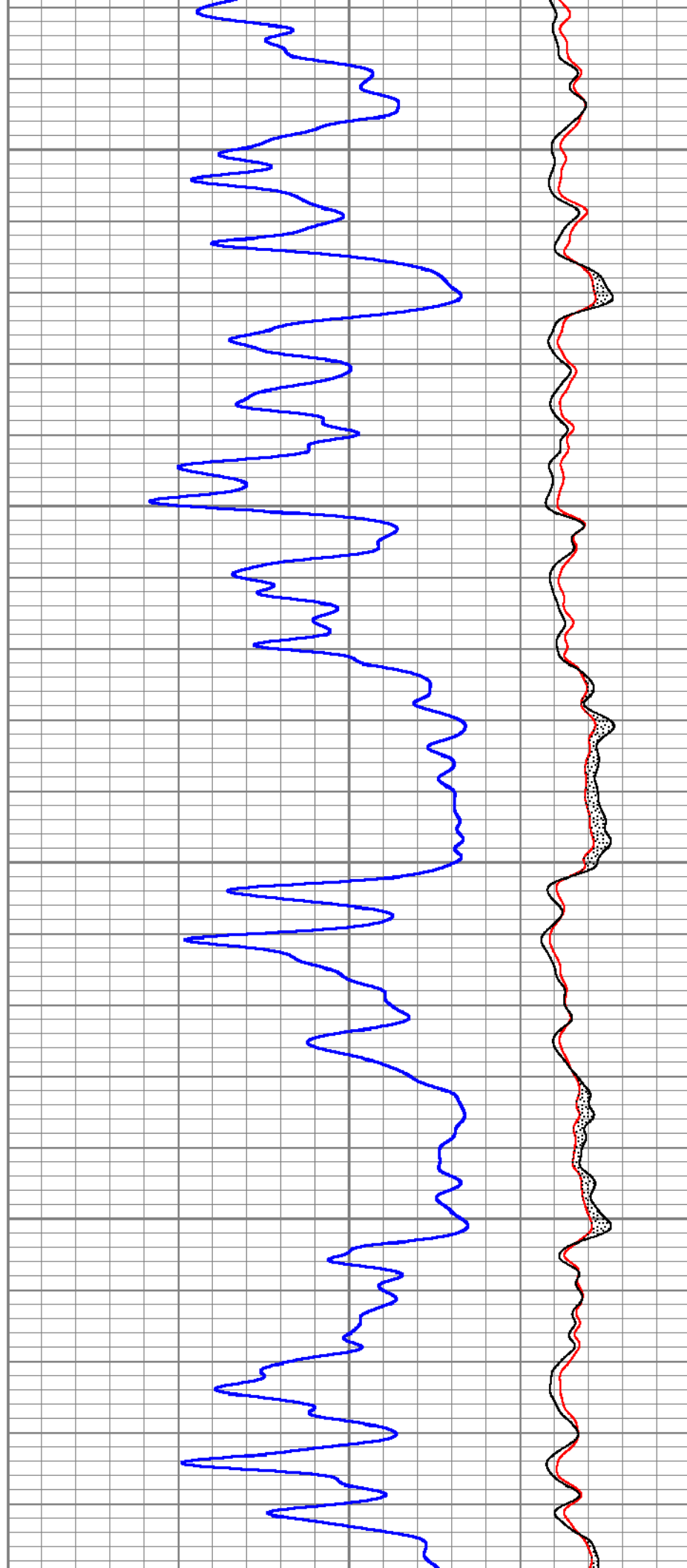
9400

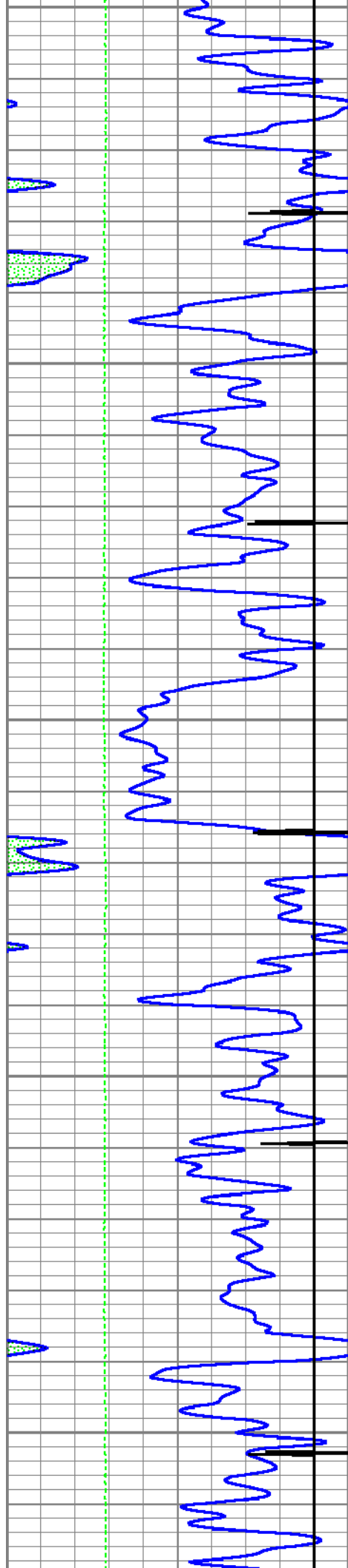




9500

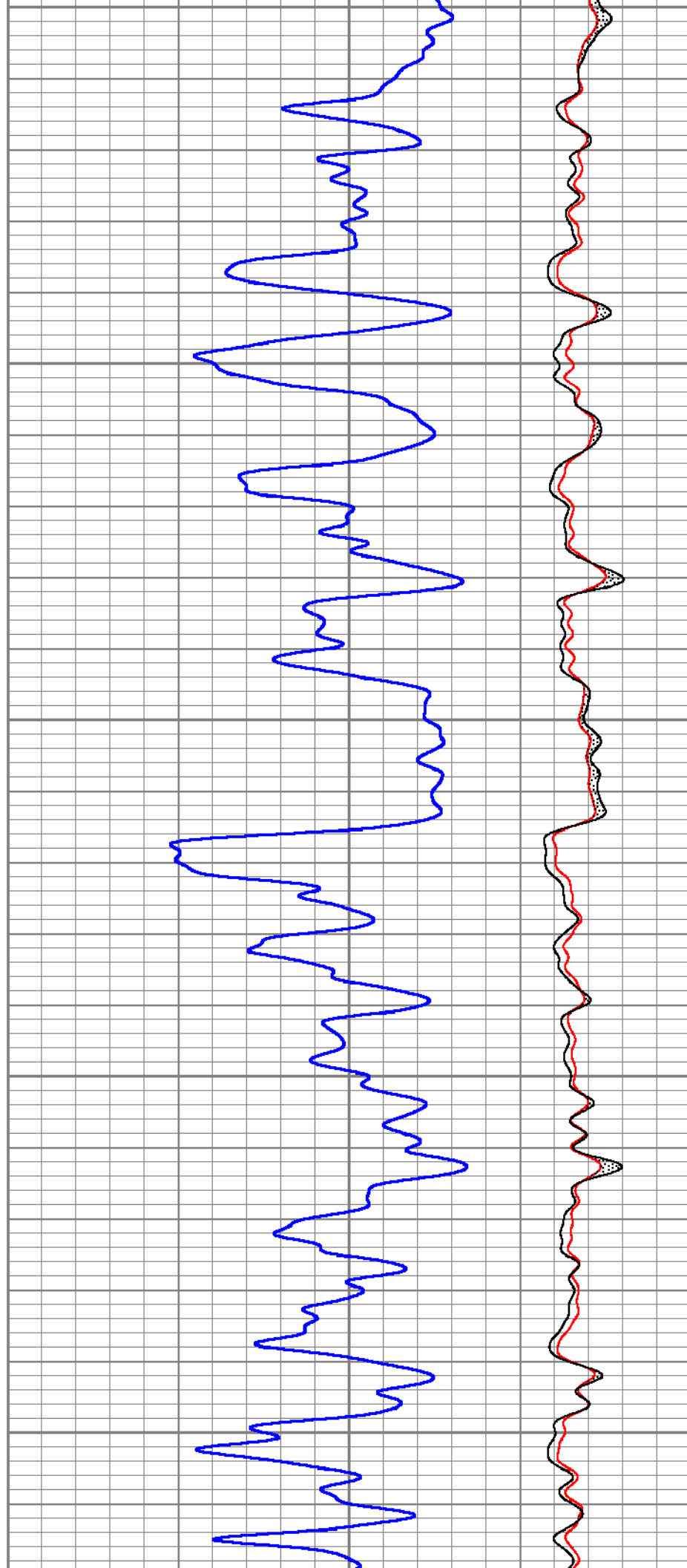
9600

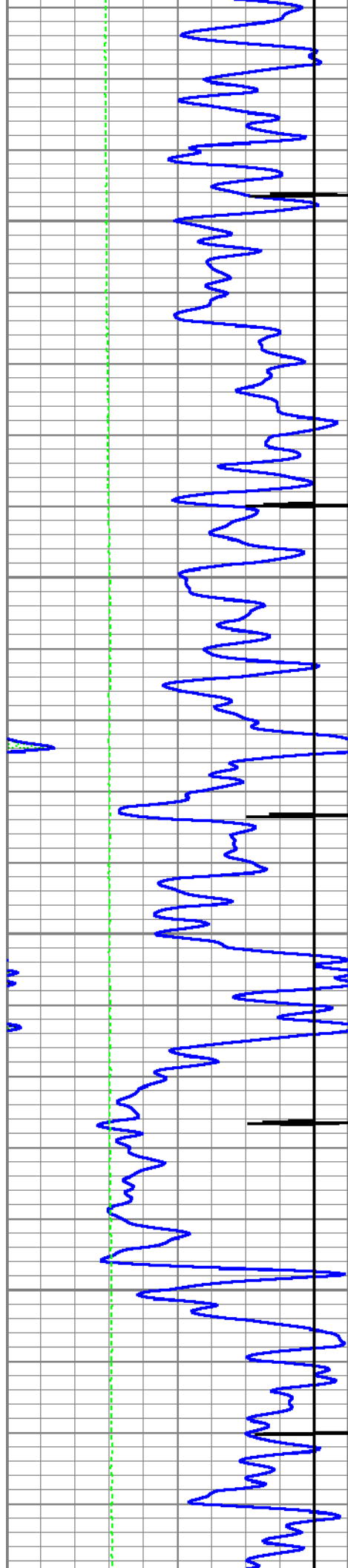




9700

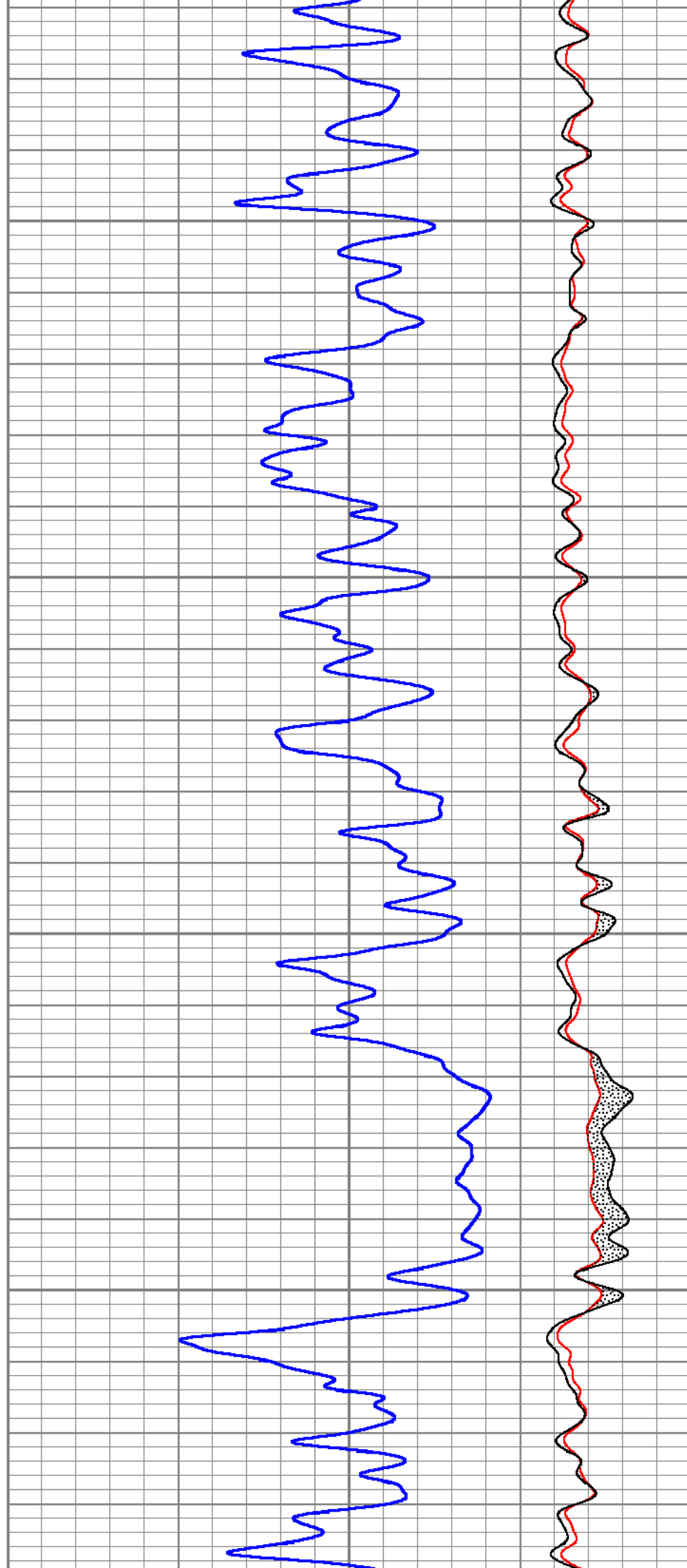
9800

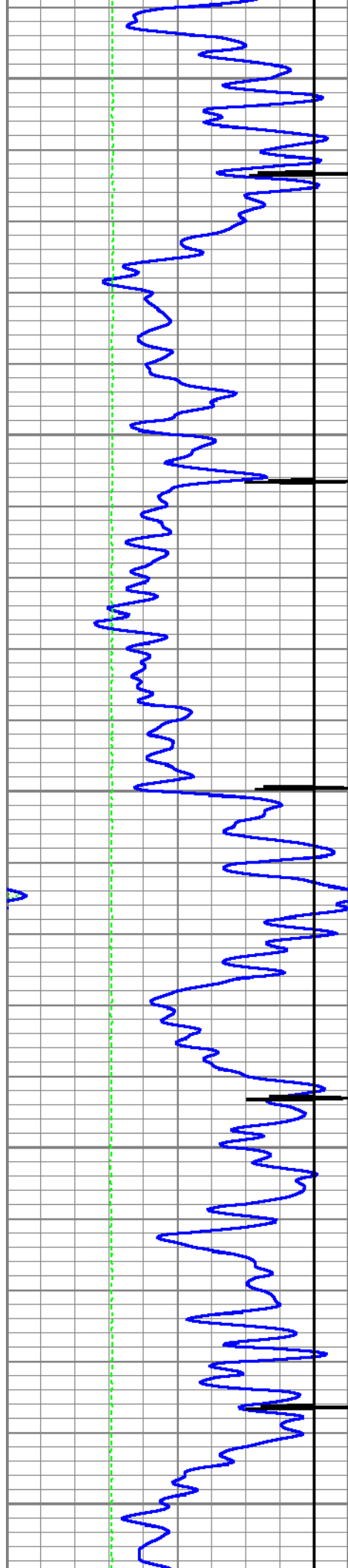




9900

10000

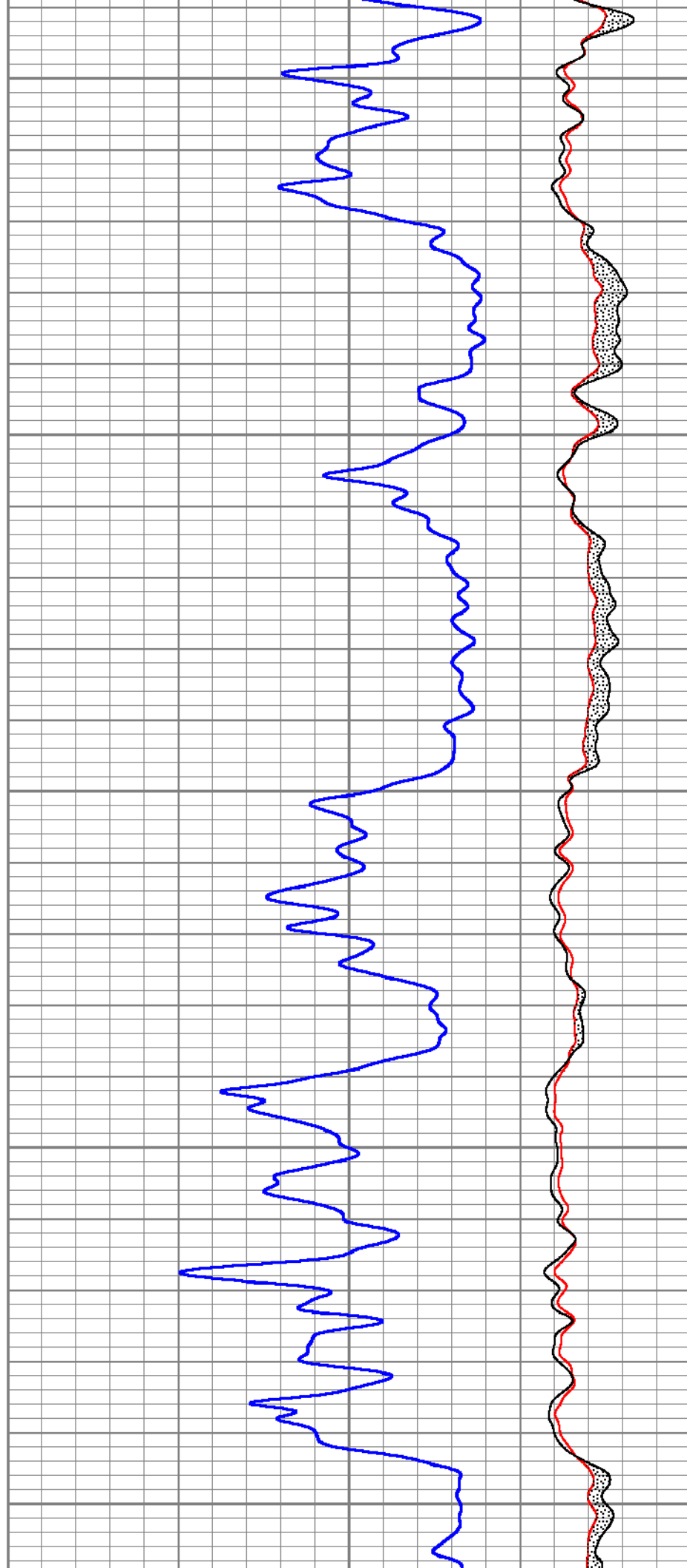


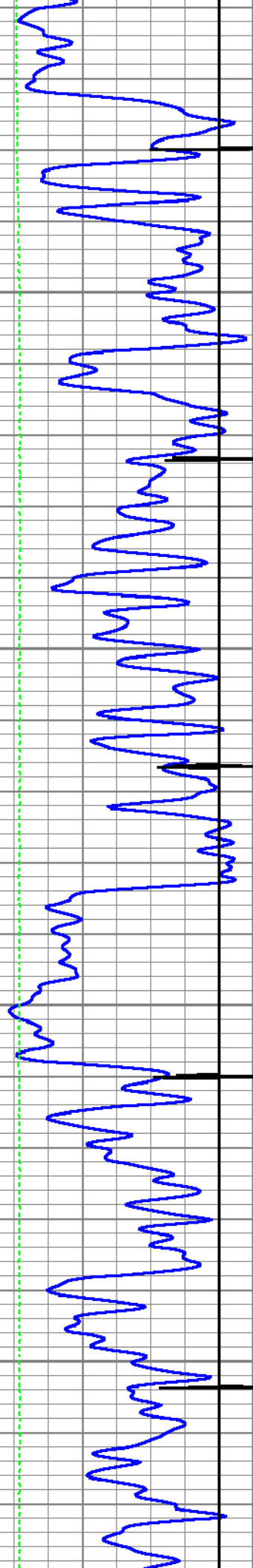


10100

10200

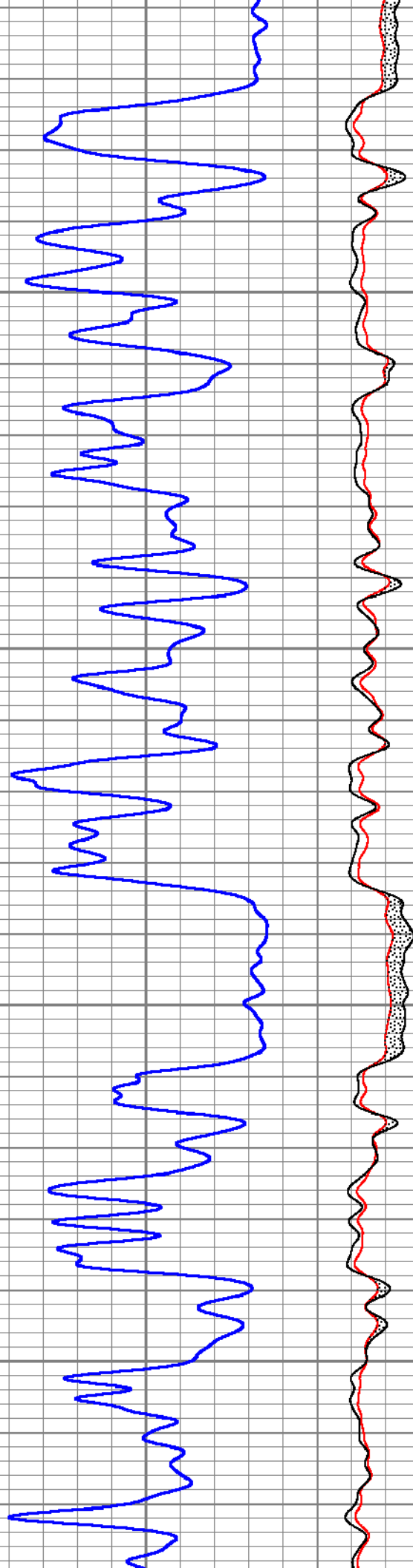
10300

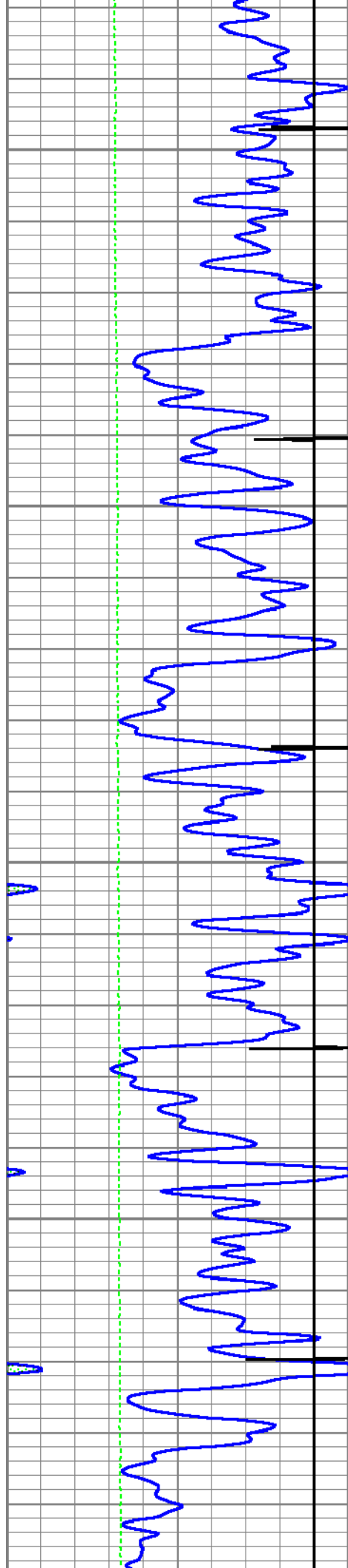




10400

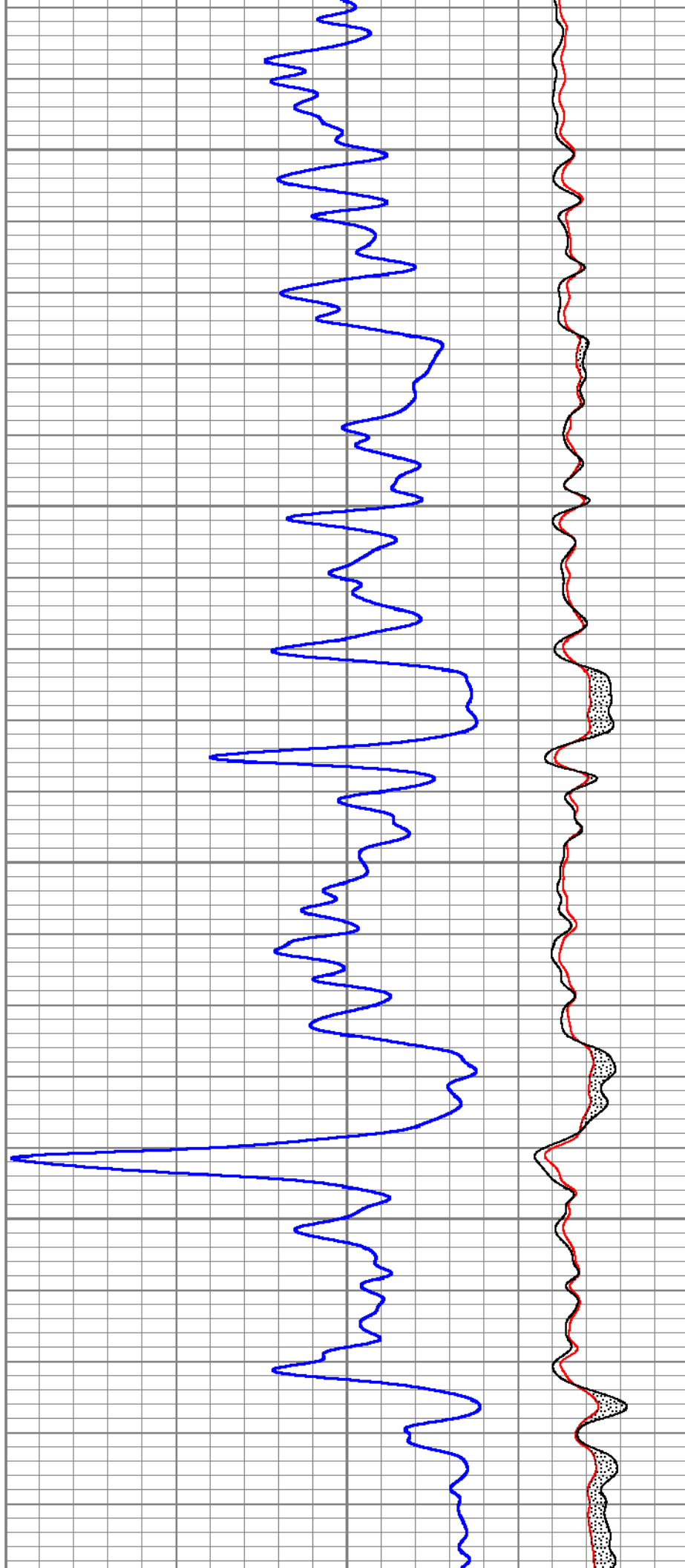
10500



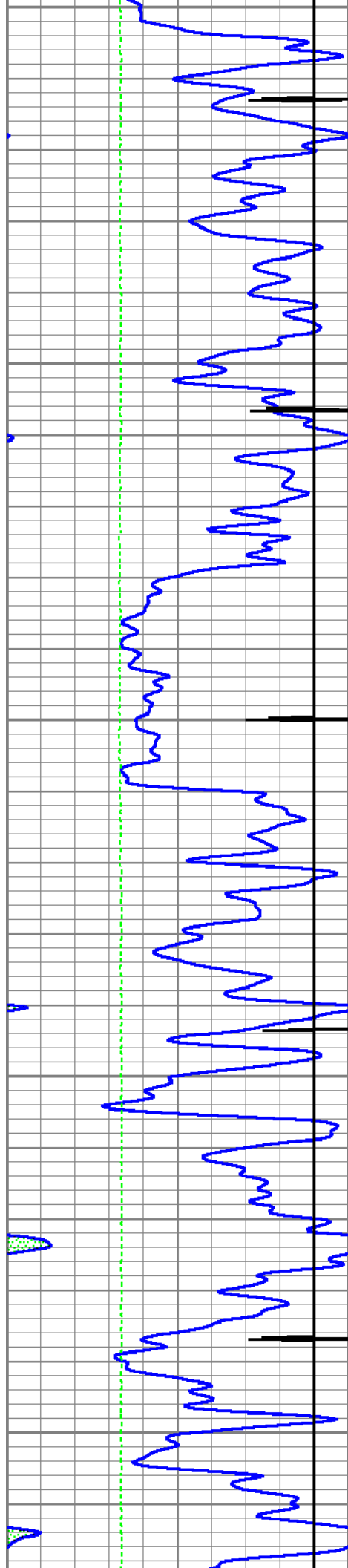


10600

10700

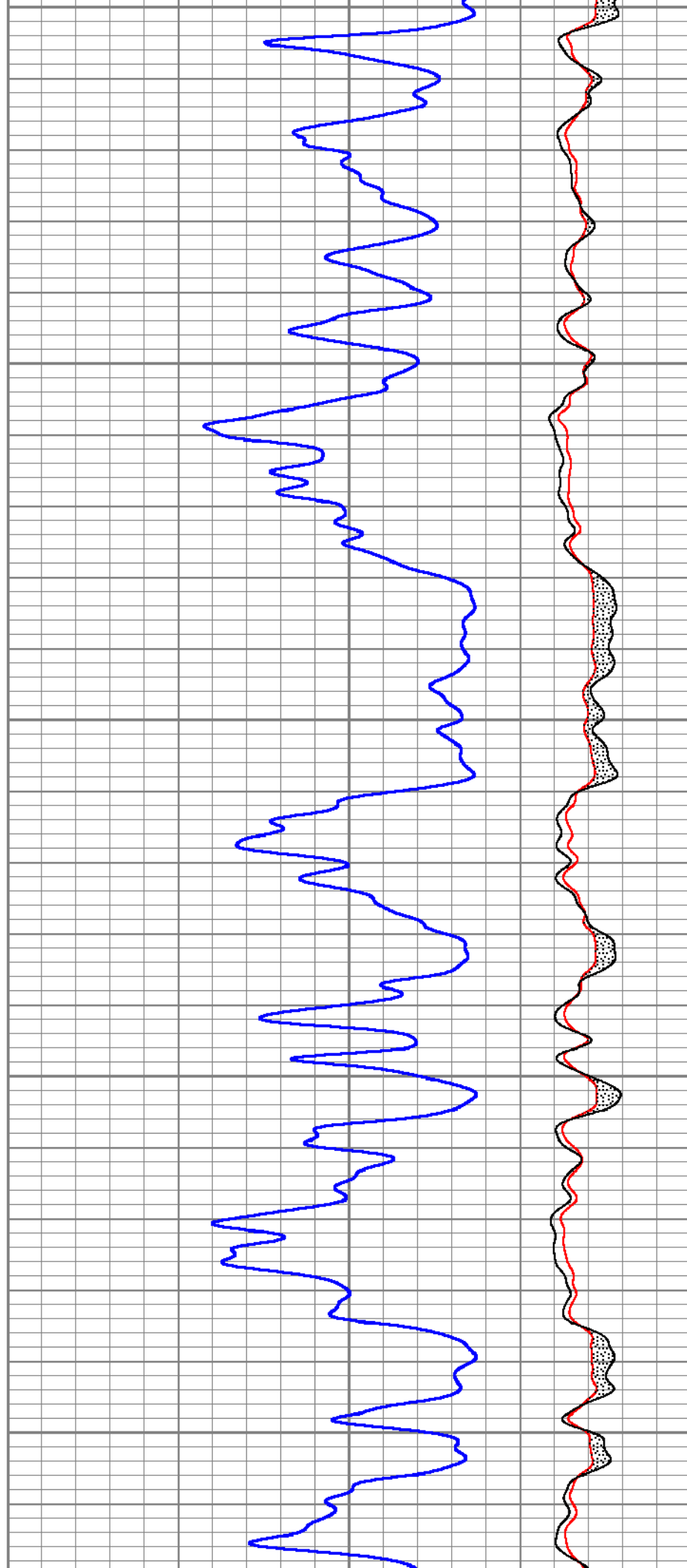


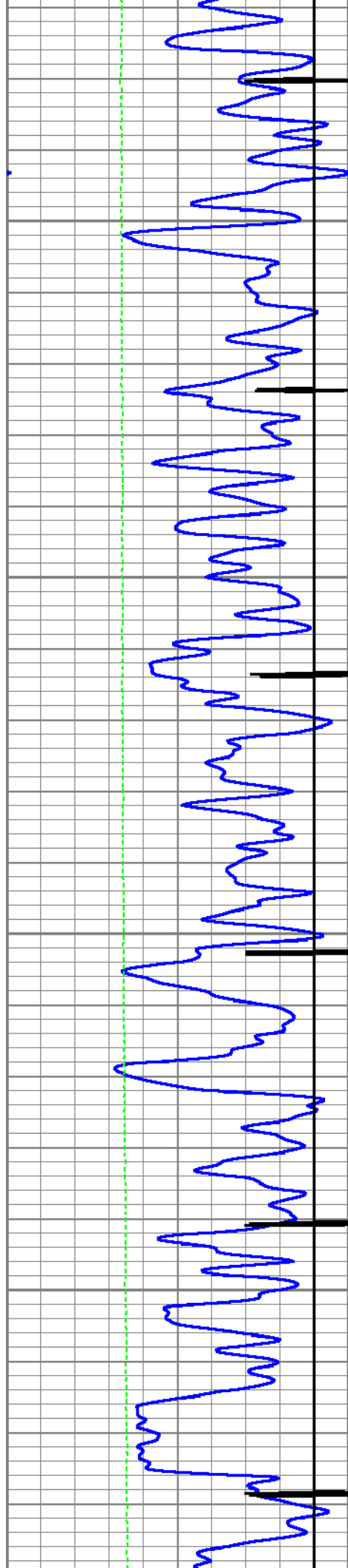




10800

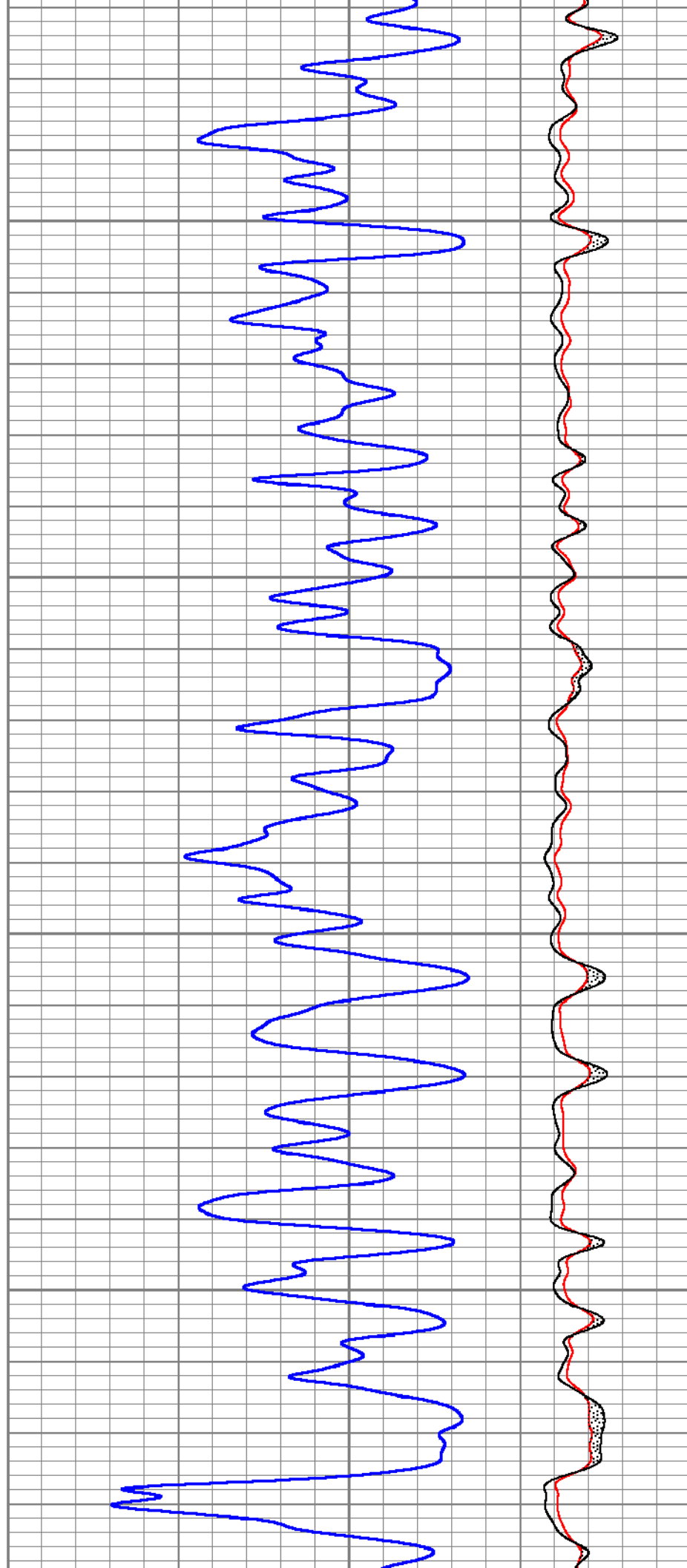
10900

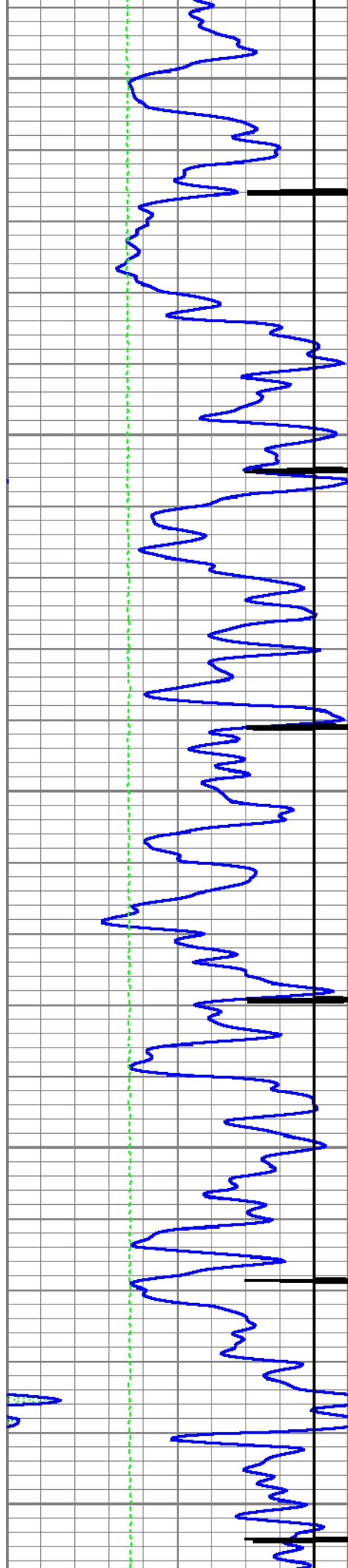




11000

11100

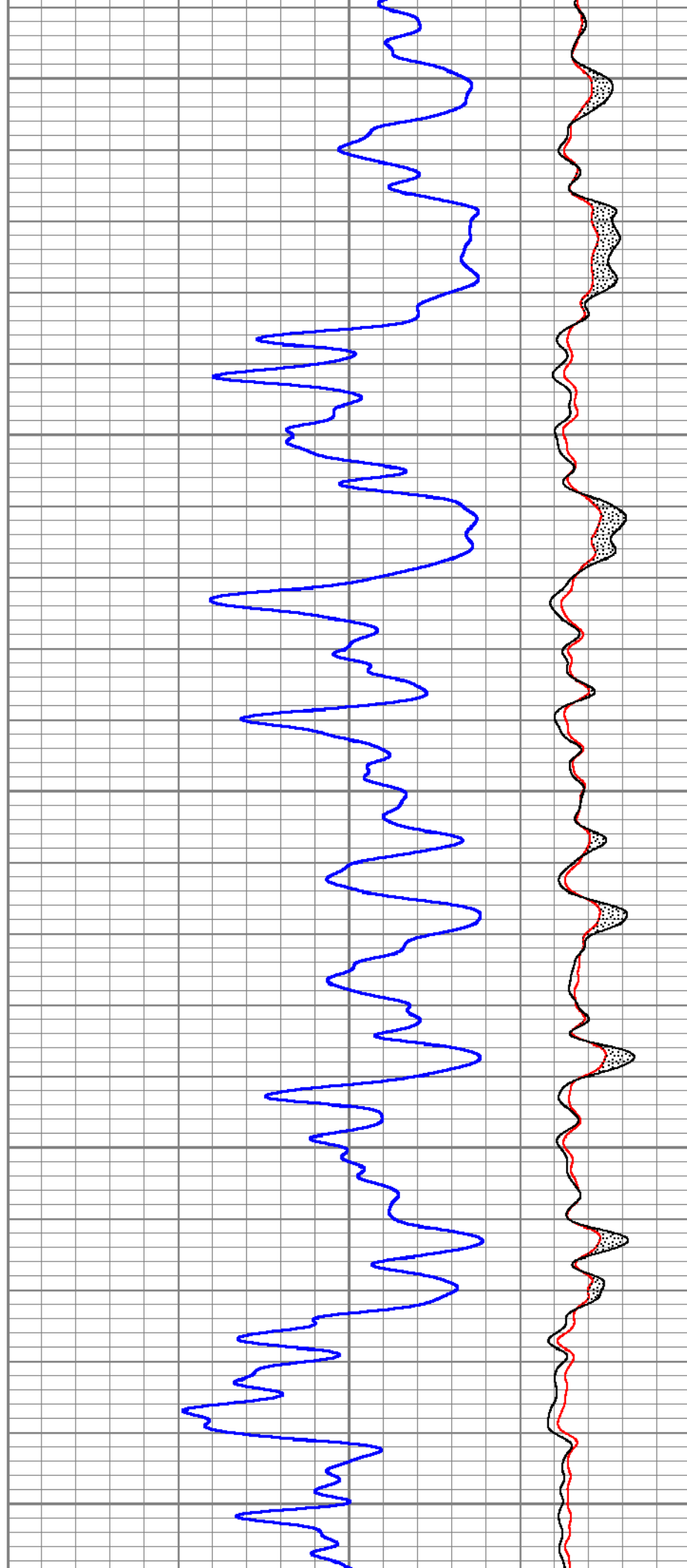


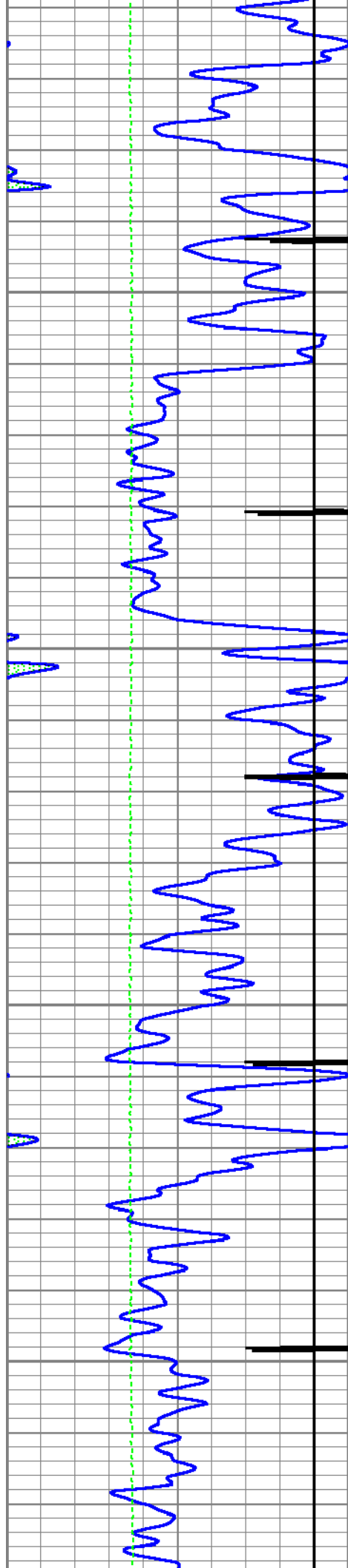


11200

11300

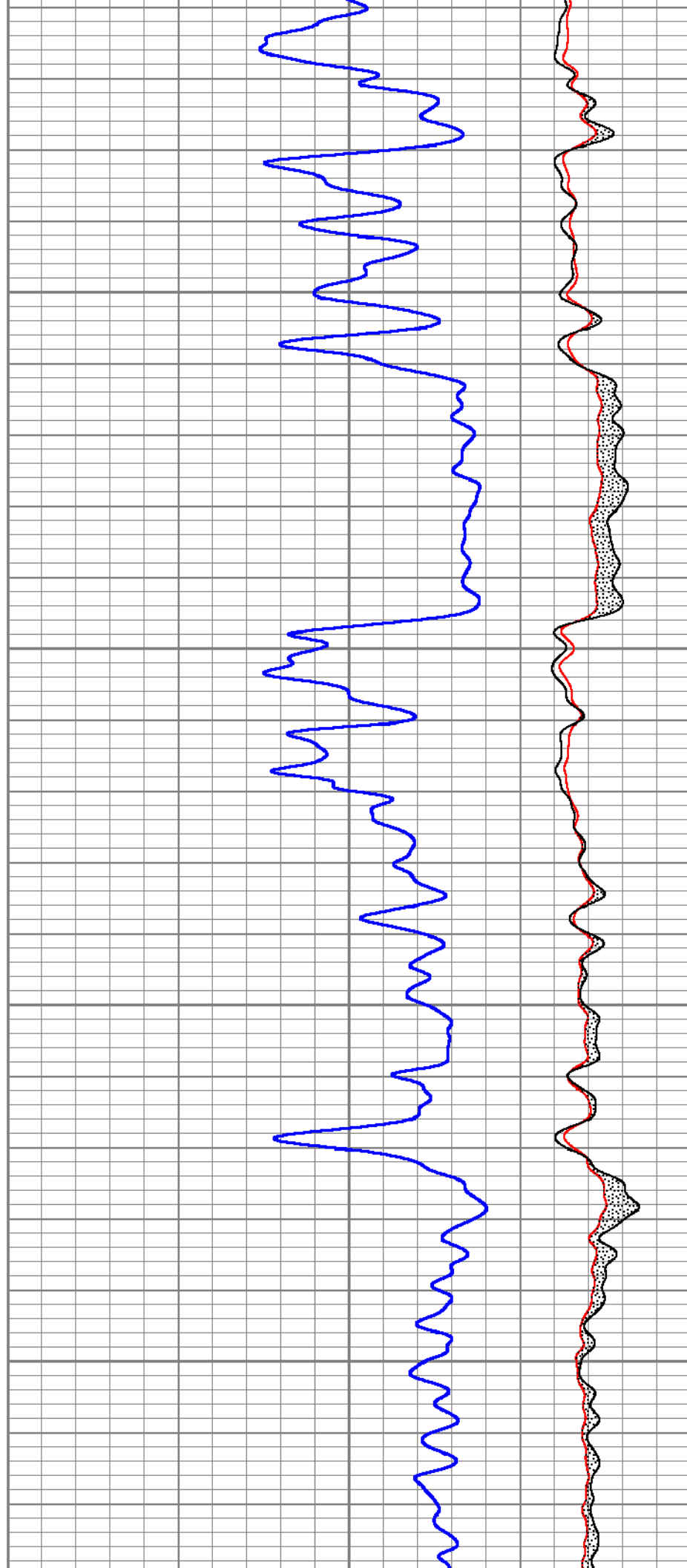
11400

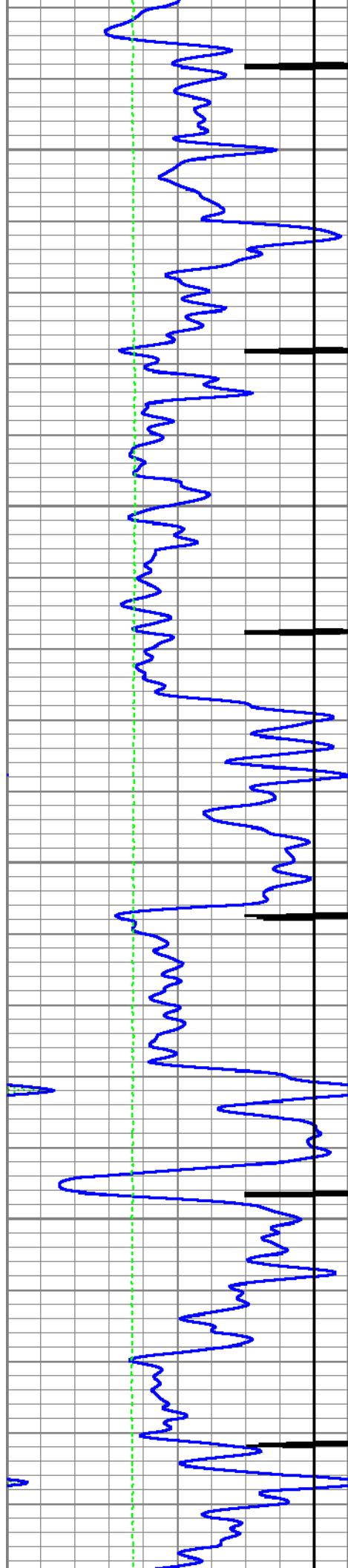




11500

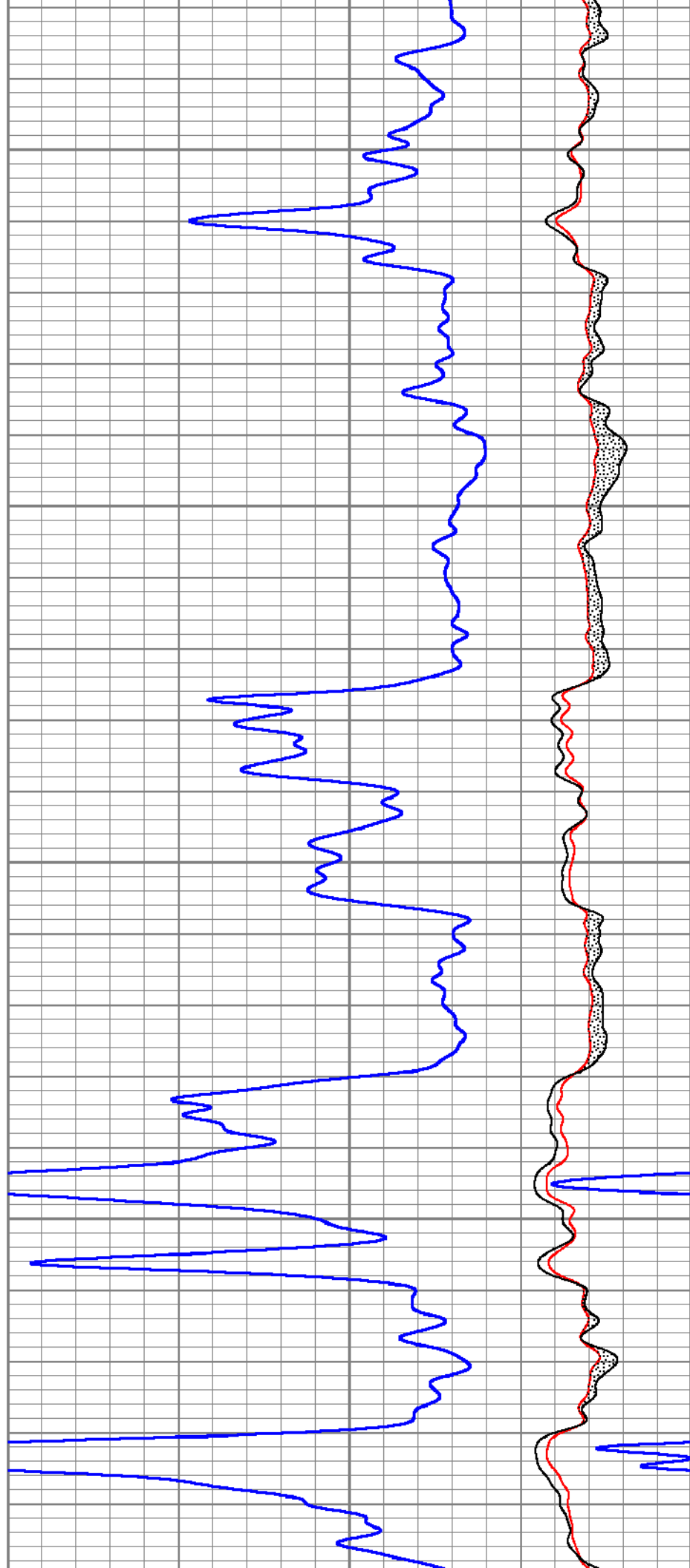
11600

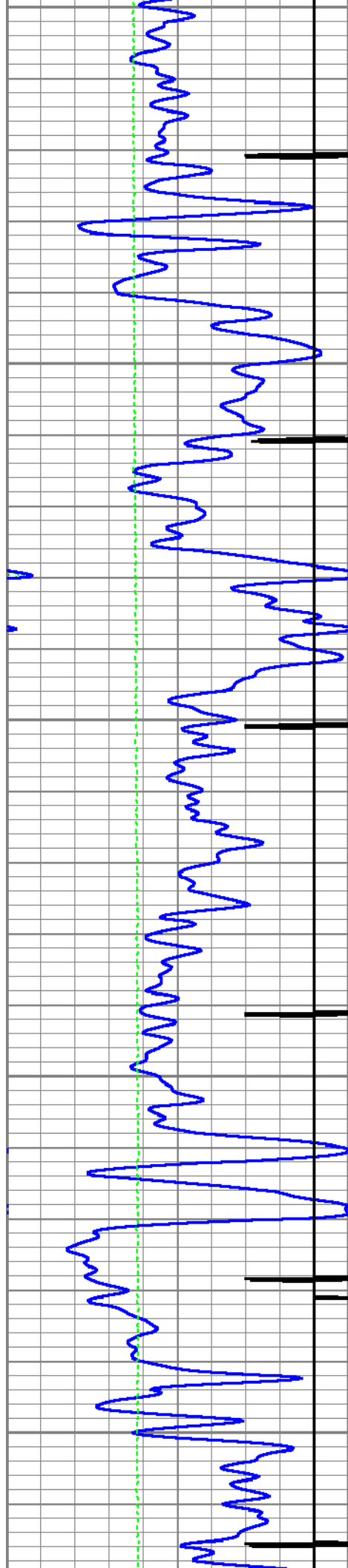




11700

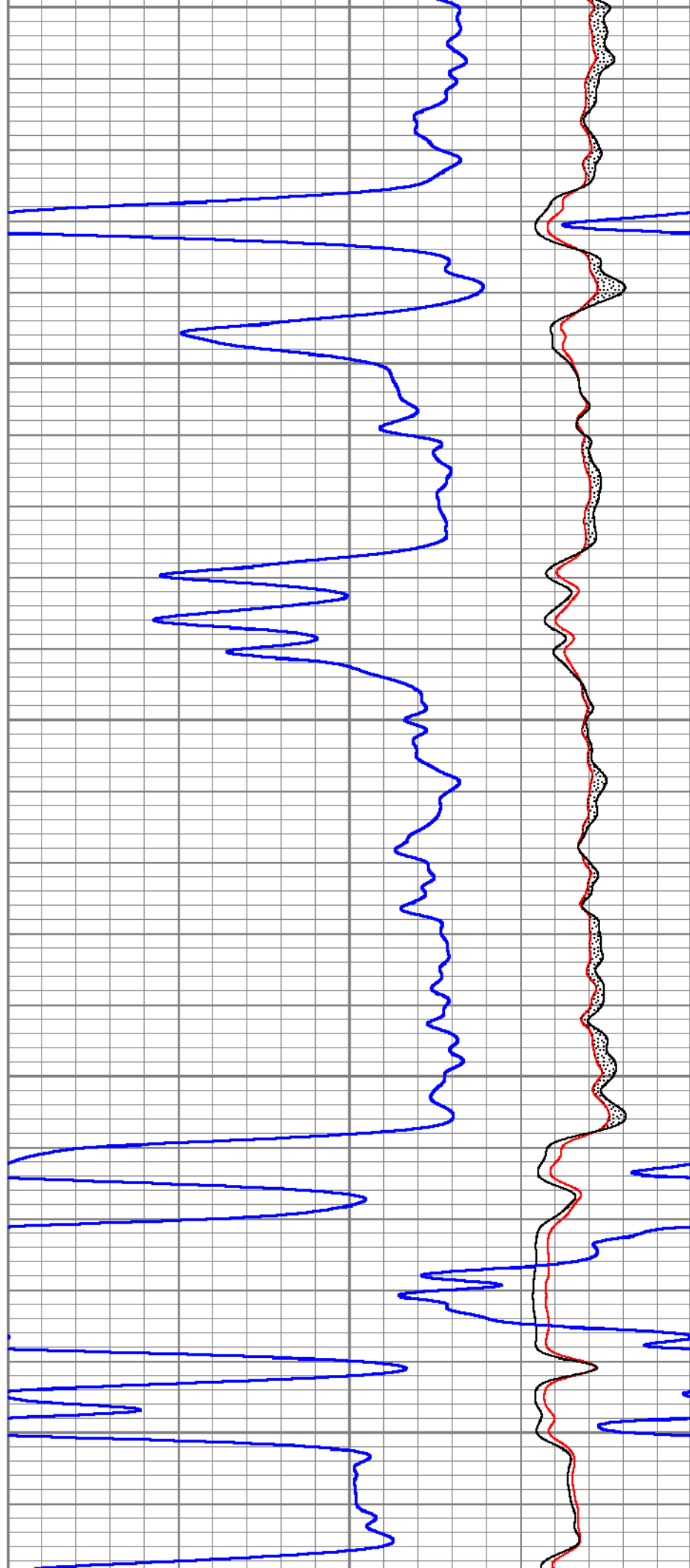
11800

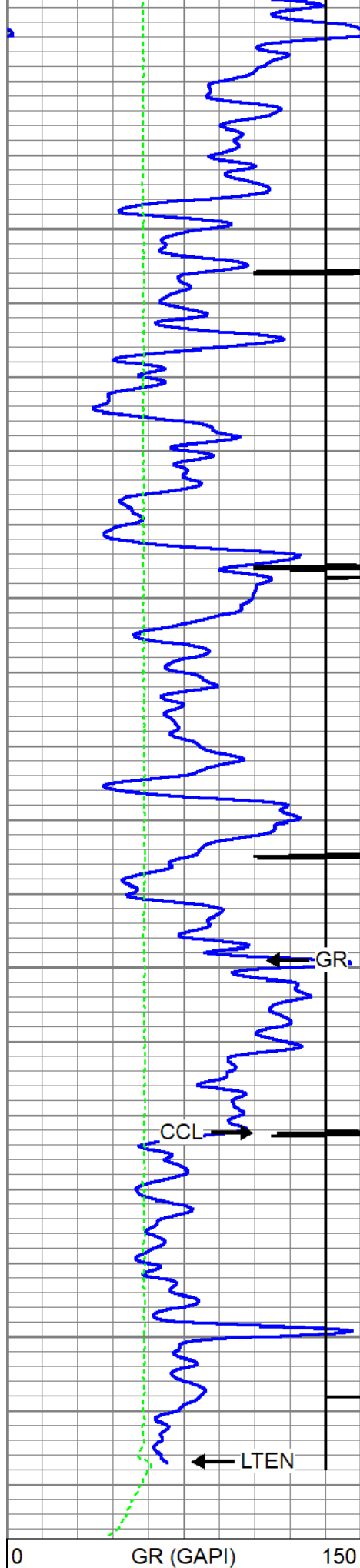




11900

12000





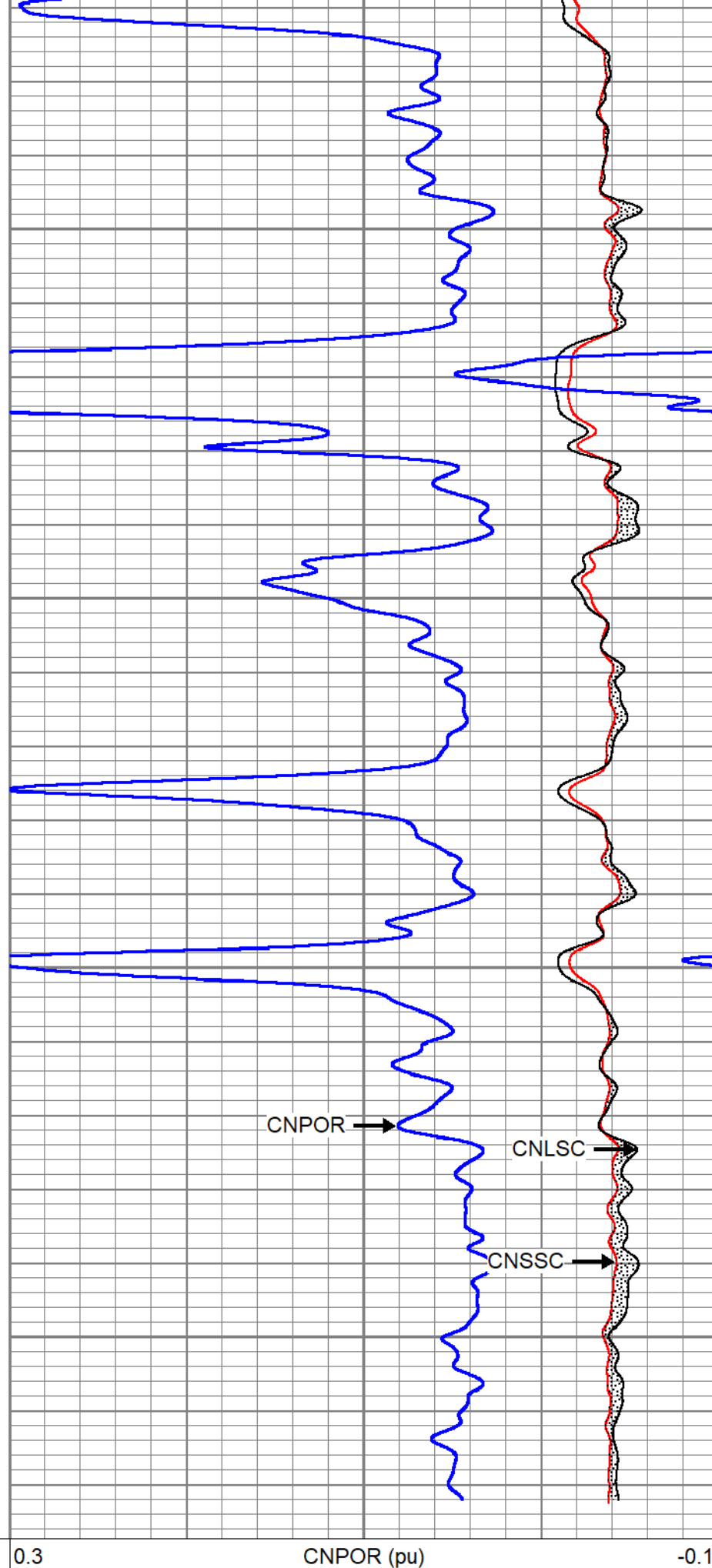
12100

12200

0 GR (GAPI) 150

9 CCL -1

0 LTEN 10000



CNPOR

CNLSC

CNSSC

0.3 CNPOR (pu) -0.1

CNLSC

0 CNSSC 15000

Line Tension (lb) 4000

0 (cps) 1500

CNSSC

0 (cps) 7000



Repeat Pass 5" = 100'

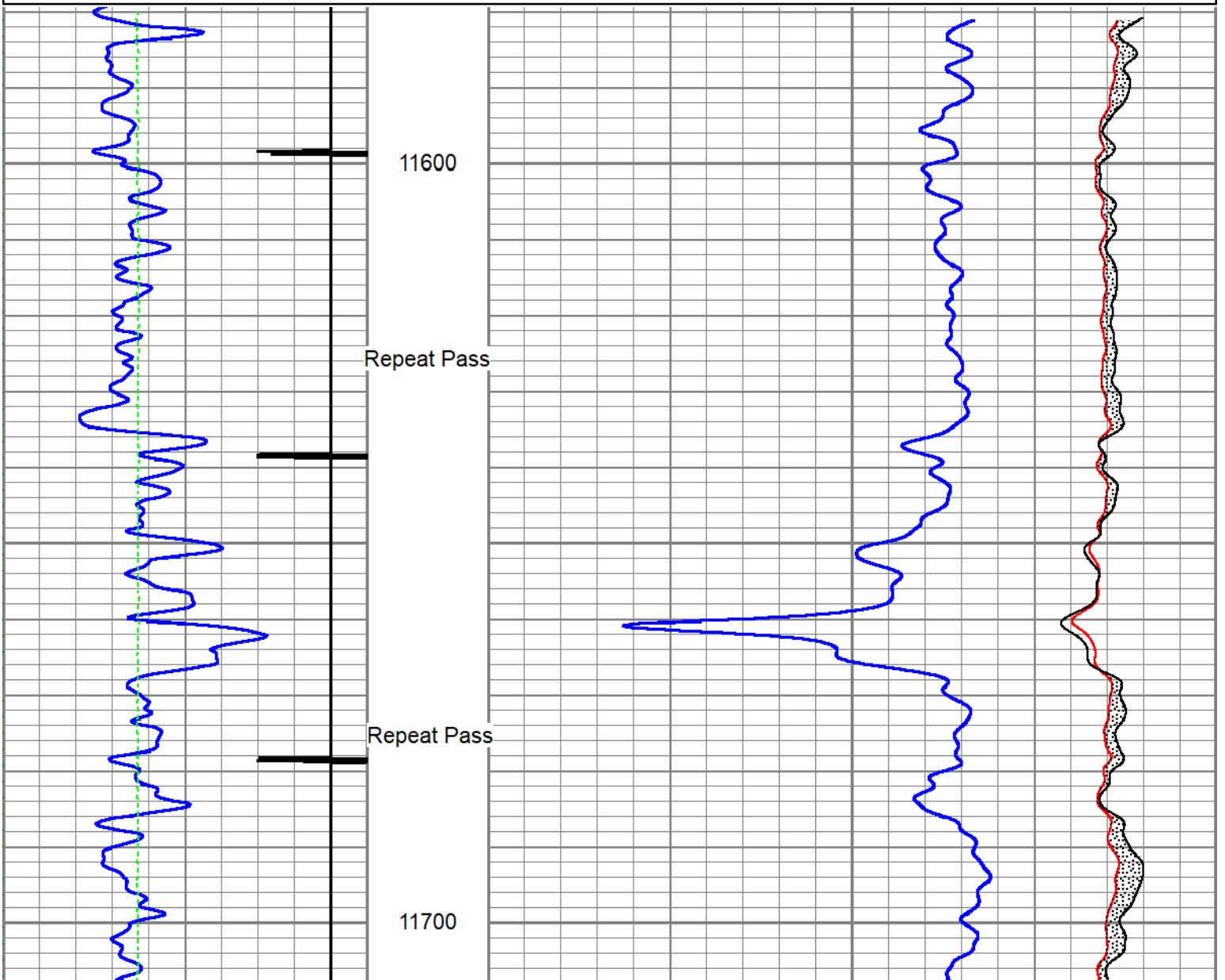
Database File caerus\_bju b26 fed 21d-26-496\_rcbl\_cnl\_8-10-2022.db  
Dataset Pathname repeat  
Presentation Format cnl  
Dataset Creation Wed Aug 10 14:08:11 2022  
Charted by Depth in Feet scaled 1:240

0 GR (GAPI) 200  
-9 CCL 1  
0 Line Tension (lb) 4000

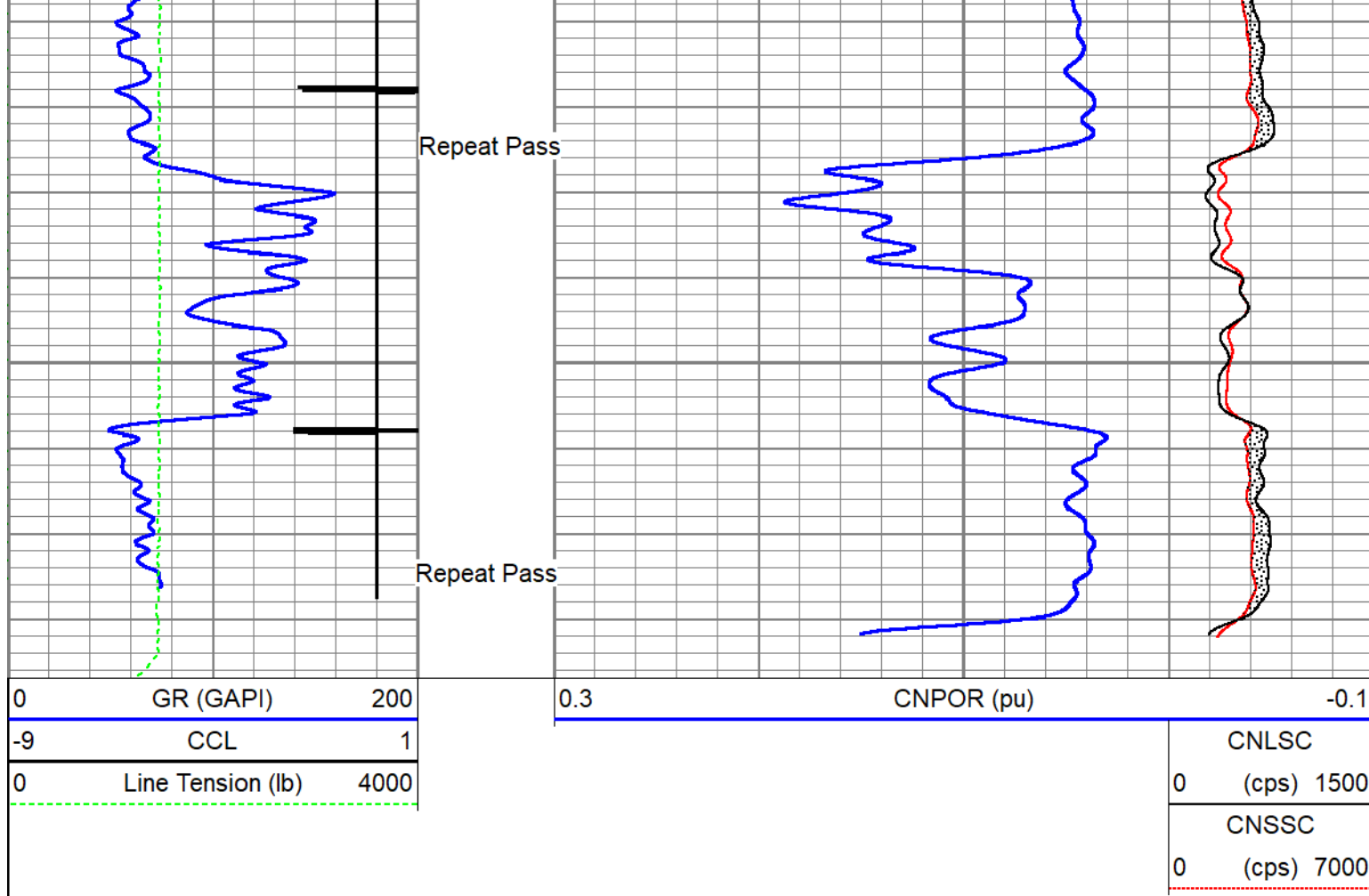
0.3 CNPOR (pu) -0.1

CNLSC  
0 (cps) 1500

CNSSC  
0 (cps) 7000







Calibration Report				
Database File	caerus_bju b26 fed 21d-26-496_rcbl_cnl_8-10-2022.db			
Dataset Pathname	main			
Dataset Creation	Wed Aug 10 14:16:53 2022			
Compensated Neutron Calibration Report				
Model:		CNT - 275Dig		
Serial Number:		FW1409-35		
SHOP CALIBRATION		Thu Mar 31 15:47:13 2022		
	Cal Tube	Units		
Tank Ratio	11.6940	SS/LS		
LS Detector	68.71	cps		
SS Detector	748.49	cps		
Tool Ratio	10.8929	SS/LS		
Tool Gain	1.0735	----		
PRE-SURVEY VERIFICATION				
	SS Detector	LS Detector	Measured (p.u.)	Target (p.u.)
POST-SURVEY VERIFICATION				

SS Detector		LS Detector		Measured (p.u.)	Target (p.u.)
Gamma Ray Calibration Report					
Type / Serial:		Probe275dig / FW1403-107			
SHOP CALIBRATION		(Not Performed)			
	Counts/Sec.	Gain	Offset	Jig	Units
Background	0.0				cps
Calibrator	1.0	1.0000			cps GAPI/cps
PRIMARY VERIFICATION					
Background	0.0				cps
Calibrator	0.0				cps
Difference				0.0	GAPI
BEFORE SURVEY VERIFICATION					
Background	0.0				cps
Calibrator	0.0				cps
Difference				0.0	GAPI
AFTER SURVEY VERIFICATION					
Background	0.0				cps
Calibrator	0.0				cps
Difference				0.0	GAPI

Segmented Cement Bond Log Calibration Report						
Serial Number:		FW1312-30				
Tool Model:		Probe275acc				
Calibration Casing Diameter:		4.500	in			
Calibration Depth:		38.050	ft			
Master Calibration, performed Wed Aug 10 13:22:25 2022:						
	Raw (v)		Calibrated (mv)		Results	
	Zero	Cal	Zero	Cal	Gain	Offset
3'	0.003	0.662	0.000	81.196	123.155	-0.316
CAL	0.004	0.667				
5'	0.001	0.652	0.000	81.196	124.660	-0.079
SUM						
S1	0.003	0.671	0.000	100.000	149.645	-0.471
S2	0.003	0.679	0.000	100.000	147.905	-0.413
S3	0.003	0.667	0.000	100.000	150.439	-0.382
S4	0.002	0.663	0.000	100.000	151.228	-0.338
S5	0.003	0.671	0.000	100.000	149.579	-0.424
S6	0.003	0.672	0.000	100.000	149.391	-0.425
S7	0.002	0.670	0.000	100.000	149.784	-0.368
S8	0.003	0.669	0.000	100.000	149.993	-0.410

Internal Reference Calibration, performed (Not Performed):						
	Raw (v)		Calibrated (v)		Results	

	Zero	Cal	Zero	Cal	Gain	Offset
CAL	0.000	0.000	0.004	0.667	1.000	0.000
Air Zero Calibration, performed Wed Aug 10 13:22:44 2022:						
	Raw (v)	Calibrated (v)	Results			
	Zero	Zero	Offset			
3'	0.003	0.000	0.000			
5'	0.002	0.000	-0.001			
SUM						
S1	0.003	0.000	0.001			
S2	0.002	0.000	0.000			
S3	0.002	0.000	0.000			
S4	0.002	0.000	-0.000			
S5	0.003	0.000	0.000			
S6	0.003	0.000	0.000			
S7	0.002	0.000	0.000			
S8	0.003	0.000	-0.000			

Inclinometer Calibration Report						
Performed:	Thu Jul 28 15:46:49 2022					
	Low Read.	High Read.	Low Ref.	High Ref.		
X Accelerometer	-931.00	904.00	-1.00	1.00	gee	
Y Accelerometer	-899.00	884.00	-1.00	1.00	gee	
Z Accelerometer	1.47	886.18	0.00	1.00	gee	

Sensor	Offset (ft)	Schematic	Description	Length (ft)	O.D. (in)	Weight (lb)
			SO BS CENT-2750-4500 Slip Over 2-3/4" I.D. for 4-1/2" O.D. Casing Bow Spring Centralizer	1.33	3.25	10.00
WVFS8	14.27		RBT8acc-Probe275acc (FW1312-30) 2.75" Radial Corrosion with accelerometer	8.75	2.75	110.00
WVFS7	14.27					
WVFS6	14.27					
WVFS5	14.27					
WVFS4	14.27					
WVFS3	14.27					
WVFS2	14.27					
WVFS1	14.27					
WVF3FT	14.27		SO BS CENT-2750-4500 Slip Over 2-3/4" I.D. for 4-1/2" O.D. Casing Bow Spring Centralizer	1.33	3.25	10.00
WVF5ET	13.27					

[illegible]