

BJU B26 FED 21D-26 496  
Garfield County, CO  
Q220659 & RM-220609  
Design #2

Company Name: Caerus Oil & Gas  
BJU B26 FED 21D-26 496  
Garfield County, CO  
Rig: H&P #330  
Created By: Will Jircik  
Date: 4:23, July 18 2022

WELL DETAILS: BJU B26 FED 21D-26 496						
				8211.0		
+N/-S	+E/-W	Northing	Easting	Latitude	Longitude	
0.0	0.0	14421542.80	2445825.00	39.677715	-108.137774	21D-26

PROJECT DETAILS:	Garfield County, CO
System Datum:	Universal Transverse Mercator (US Survey Feet)
Datum:	NAD 1927 - Western US
Ellipsoid:	Clarke 1866
Zone:	Zone 12N (114 W to 108 W)
Geodetic System:	Mean Sea Level

DESIGN TARGET DETAILS						
Name	TVD	+N/-S	+E/-W	Northing	Easting	Latitude
21D-26 - OHCR	8184.0	541.2	1764.8	14422139.99	2447571.63	39.679200
21D-26 - PBHL	12175.0	506.9	1670.8	14422102.80	2447478.80	39.679106

DESIGN ANNOTATIONS									
MD	Inc	Azi	TVD	+N/-S	+E/-W	VSec	Departure	Annotation	
120.0	0.43	64.23	120.0	0.1	0.4	0.4	0.0	Conductor Tie in	
139.3	1.00	72.95	139.3	0.2	0.6	0.7	0.2	EOB @ 1.00° Inc. / 72.95° Azm	
200.0	1.00	72.95	200.0	0.5	1.6	1.7	1.3	Build 3° / 100'	
623.8	13.71	72.95	619.5	16.4	53.4	55.9	55.5	EOB @ 13.71° Inc. / 72.95° Azm	
7944.3	13.71	72.95	7731.2	525.2	1712.7	1791.4	1791.0	Drop 3° / 100'	
8401.4	0.00	0.00	8184.0	541.2	1764.8	1845.9	1845.5	EOD @ Vertical / Build 1.5° / 100'	
8498.3	1.45	250.00	8280.9	540.7	1763.6	1844.7	1846.7	EOB @ 1.45° Inc. / 250.00° Azm	
12393.7	1.45	250.00	12175.0	506.9	1670.8	1746.0	1945.5	TD @ 12393.7' MD / 12175.0' TVD	

FORMATION TOP DETAILS		
TVDPath	MDPath	Formation
3499.0	3567.9	Wasatch
5899.0	6058.3	Wasatch G
5946.0	6106.7	Top Injection Zone
6199.0	6367.1	Fort Union
6389.0	6562.7	Top Influx Sand
6480.0	6656.4	Bot Influx Sand
7980.0	8197.0	Bot Injection Zone
8184.0	8401.4	Ohio Creek / TOG
8525.0	8742.5	Williams Fork
11475.0	11693.5	Cameo
11975.0	12193.6	Rollins

T

M

Azimuths to True North

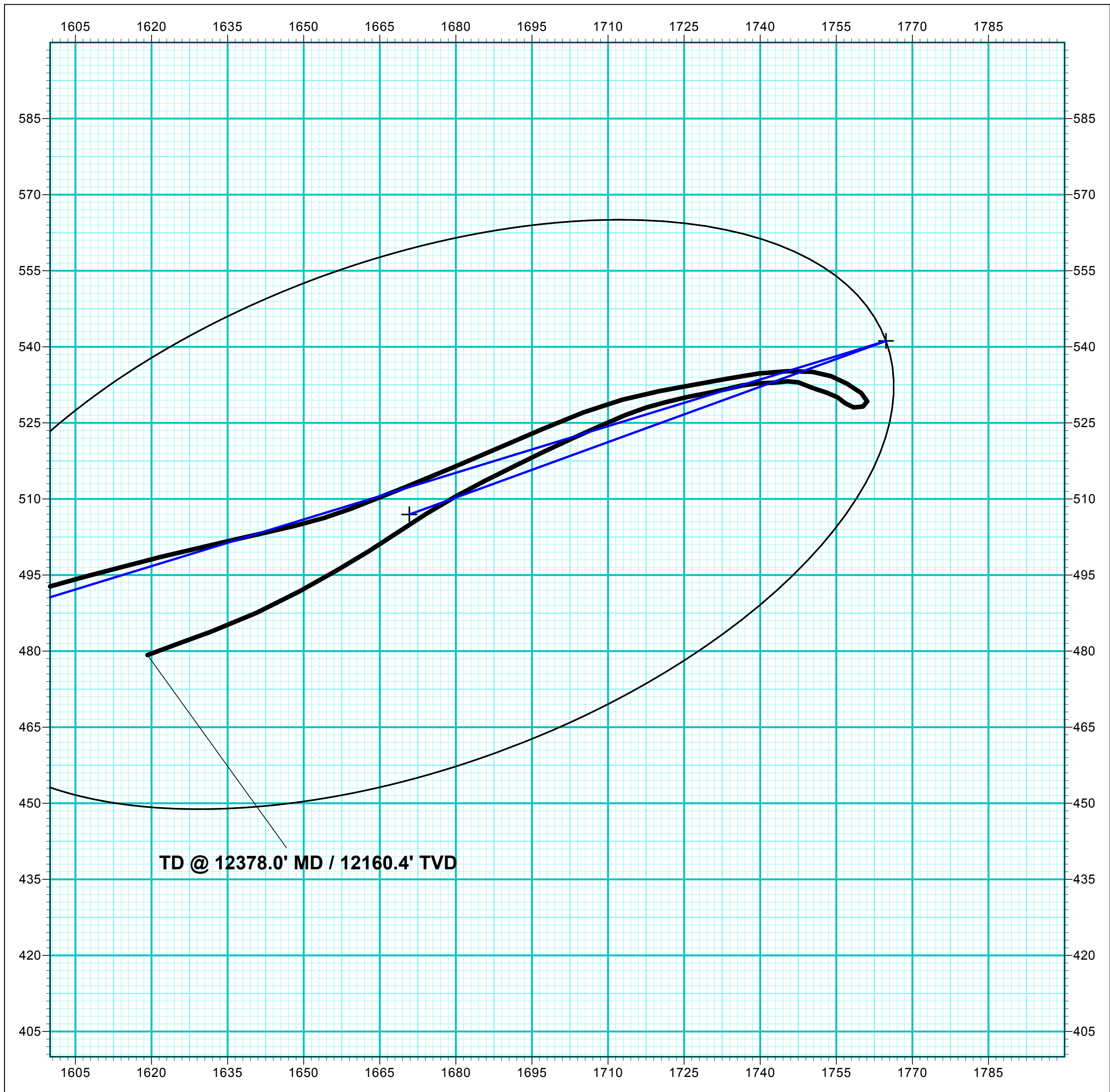
Magnetic North: 9.23°

Strength: 51068.1nT

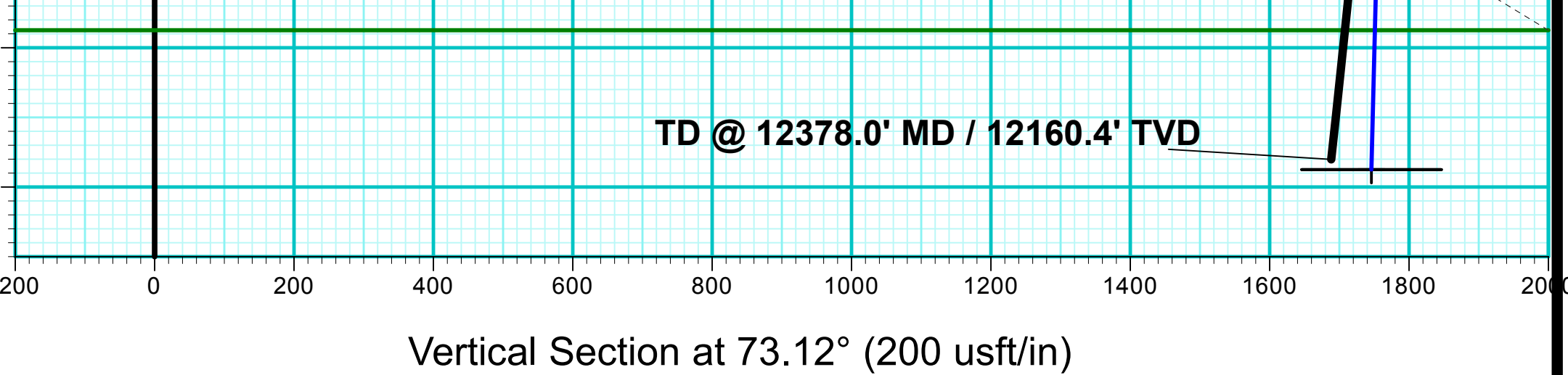
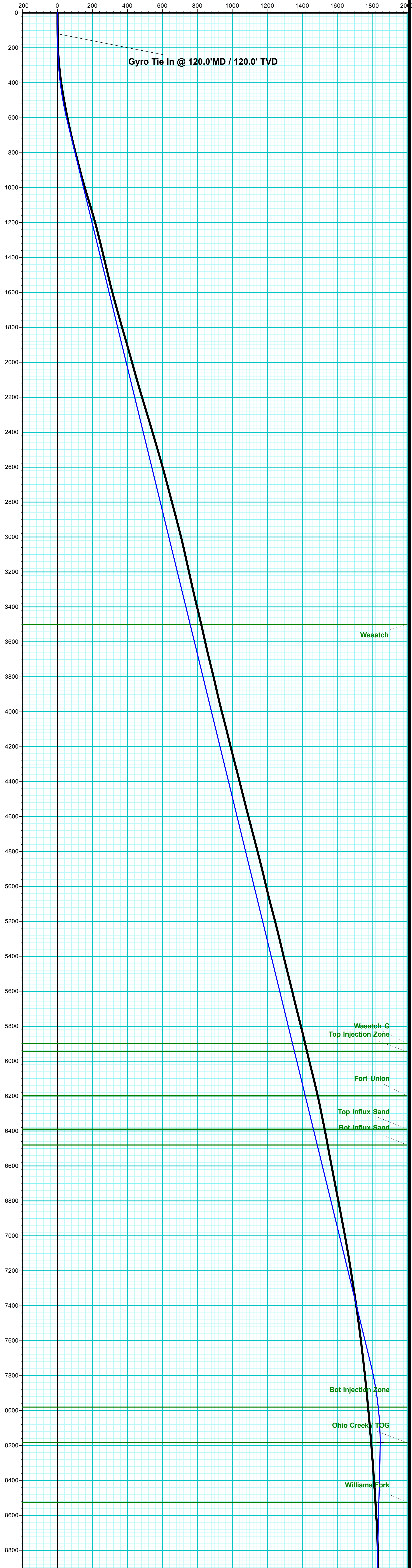
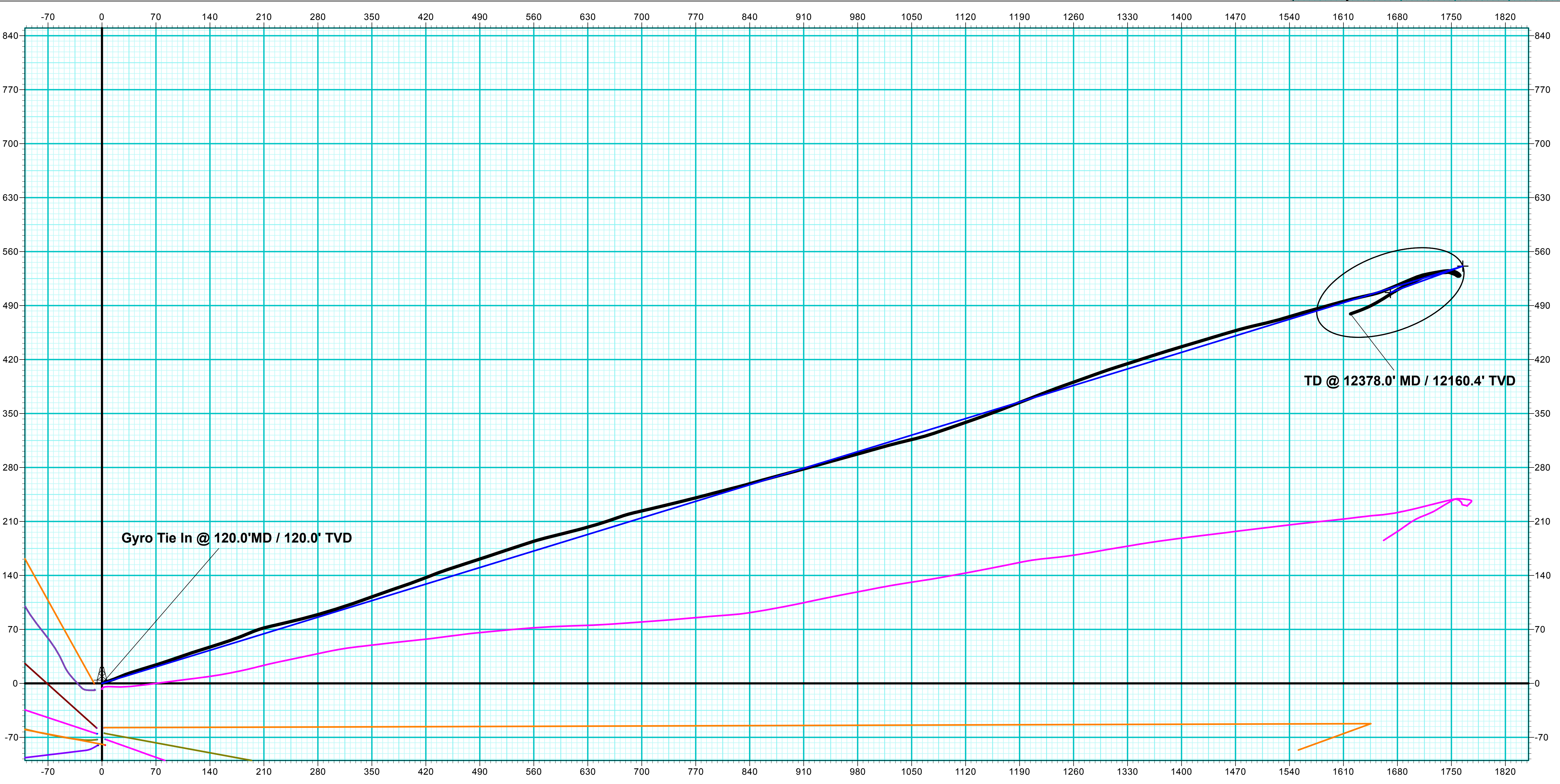
Dip Angle: 65.72°

Date: 7/8/2022

Model: HDGM2022



ANNOTATIONS								
MD	Inc	Azi	TVD	+N/-S	+E/-W	VSec	Departure	Annotation
120.0	0.43	64.23	120.0	0.1	0.4	0.4	0.4	Gyro Tie In @ 120.0' MD / 120.0' TVD
12378.0	6.10	249.60	12160.4	479.2	1619.2	1688.6	2002.1	TD @ 12378.0' MD / 12160.4' TVD



Vertical Section at 73.12° (200 usft/in)



## **Caerus Oil & Gas**

**Garfield County, CO**

**BJU B26 496 Pad**

**BJU B26 FED 21D-26 496 - Slot 21D-26**

**Wellbore #1**

**Design: Wellbore #1**

## **KLX Survey Report**

**18 July, 2022**





<b>Company:</b>	Caerus Oil & Gas	<b>Local Co-ordinate Reference:</b>	Well BJU B26 FED 21D-26 496 - Slot 21D-26
<b>Project:</b>	Garfield County, CO	<b>TVD Reference:</b>	RKB @ 8241.0usft (H&P #330)
<b>Site:</b>	BJU B26 496 Pad	<b>MD Reference:</b>	RKB @ 8241.0usft (H&P #330)
<b>Well:</b>	BJU B26 FED 21D-26 496	<b>North Reference:</b>	True
<b>Wellbore:</b>	Wellbore #1	<b>Survey Calculation Method:</b>	Minimum Curvature
<b>Design:</b>	Wellbore #1	<b>Database:</b>	EDM 5000.1 Single User Db

<b>Project</b>	Garfield County, CO		
<b>Map System:</b>	Universal Transverse Mercator (US Survey Feet)	<b>System Datum:</b>	Mean Sea Level
<b>Geo Datum:</b>	NAD 1927 - Western US		
<b>Map Zone:</b>	Zone 12N (114 W to 108 W)		

Site		BJU B26 496 Pad							
Site Position:		Northing:	14,421,469.70	usft	Latitude:	39.677515			
From:	Map	Easting:	2,445,821.30	usft	Longitude:	-108.137796			
Position Uncertainty:		0.0	usft	Slot Radius:	13-3/16	"	Grid Convergence:	1.83	°

Well	BJU B26 FED 21D-26 496 - Slot 21D-26					
Well Position	+N/-S	0.0 usft	Northing:	14,421,542.80 usft	Latitude:	39.677715
	+E/-W	0.0 usft	Easting:	2,445,825.00 usft	Longitude:	-108.137774
Position Uncertainty		0.0 usft	Wellhead Elevation:	usft	Ground Level:	8,211.0 usft

<b>Wellbore</b>	Wellbore #1				
<b>Magnetics</b>	<b>Model Name</b>	<b>Sample Date</b>	<b>Declination (°)</b>	<b>Dip Angle (°)</b>	<b>Field Strength (nT)</b>
	HDGM2022	7/8/2022	9.23	65.72	51,068.10000000

<b>Design</b>	Wellbore #1				
<b>Audit Notes:</b>					
<b>Version:</b>	1.0	<b>Phase:</b>	ACTUAL	<b>Tie On Depth:</b>	0.0
<b>Vertical Section:</b>	<b>Depth From (TVD) (usft)</b>	<b>+N/-S (usft)</b>	<b>+E/-W (usft)</b>	<b>Direction (°)</b>	
	0.0	0.0	0.0	73.51	

<b>Survey Program</b>	<b>Date</b>	7/18/2022			
<b>From (usft)</b>	<b>To (usft)</b>	<b>Survey (Wellbore)</b>	<b>Tool Name</b>	<b>Description</b>	
30.0	120.0	Sfc Gyro (Wellbore #1)	GYRO-NS	OWSG Gyrocompass Gyro	
336.0	12,378.0	KLX MWD (Wellbore #1)	MWD	OWSG MWD - Standard	

<b>Survey</b>										
<b>Measured Depth (usft)</b>	<b>Inclination (°)</b>	<b>Azimuth (°)</b>	<b>Vertical Depth (usft)</b>	<b>+N/-S (usft)</b>	<b>+E/-W (usft)</b>	<b>Vertical Section (usft)</b>	<b>Dogleg Rate (°/100usft)</b>	<b>Build Rate (°/100usft)</b>	<b>Turn Rate (°/100usft)</b>	
0.0	0.00	0.00	0.0	0.0	0.0	0.0	0.00	0.00	0.00	
30.0	0.00	0.00	30.0	0.0	0.0	0.0	0.00	0.00	0.00	
60.0	0.27	92.87	60.0	0.0	0.1	0.1	0.90	0.90	0.00	
90.0	0.36	59.24	90.0	0.0	0.2	0.2	0.67	0.30	-112.10	
<b>Gyro Tie In @ 120.0'MD / 120.0' TVD</b>										
120.0	0.43	64.23	120.0	0.1	0.4	0.4	0.26	0.23	16.63	
336.0	6.20	71.20	335.5	4.3	12.2	12.9	2.67	2.67	3.23	
426.0	9.00	66.50	424.7	8.6	23.2	24.7	3.18	3.11	-5.22	
516.0	10.40	72.30	513.5	13.9	37.4	39.8	1.90	1.56	6.44	
611.0	11.80	73.00	606.7	19.4	54.9	58.1	1.48	1.47	0.74	

<b>Company:</b>	Caerus Oil & Gas	<b>Local Co-ordinate Reference:</b>	Well BJU B26 FED 21D-26 496 - Slot 21D-26
<b>Project:</b>	Garfield County, CO	<b>TVD Reference:</b>	RKB @ 8241.0usft (H&P #330)
<b>Site:</b>	BJU B26 496 Pad	<b>MD Reference:</b>	RKB @ 8241.0usft (H&P #330)
<b>Well:</b>	BJU B26 FED 21D-26 496	<b>North Reference:</b>	True
<b>Wellbore:</b>	Wellbore #1	<b>Survey Calculation Method:</b>	Minimum Curvature
<b>Design:</b>	Wellbore #1	<b>Database:</b>	EDM 5000.1 Single User Db

Survey									
Measured Depth (usft)	Inclination (°)	Azimuth (°)	Vertical Depth (usft)	+N/-S (usft)	+E/-W (usft)	Vertical Section (usft)	Dogleg Rate (°/100usft)	Build Rate (°/100usft)	Turn Rate (°/100usft)
705.0	12.90	72.60	698.5	25.3	74.1	78.2	1.17	1.17	-0.43
800.0	14.30	70.30	790.8	32.4	95.3	100.6	1.58	1.47	-2.42
894.0	14.40	72.20	881.9	39.9	117.3	123.8	0.51	0.11	2.02
989.0	15.80	72.70	973.6	47.4	140.9	148.6	1.48	1.47	0.53
1,083.0	17.20	71.10	1,063.8	55.7	166.3	175.3	1.57	1.49	-1.70
1,178.0	16.20	66.70	1,154.7	65.5	191.8	202.5	1.70	-1.05	-4.63
1,272.0	14.30	77.30	1,245.5	73.2	215.1	227.1	3.58	-2.02	11.28
1,367.0	13.70	76.30	1,337.6	78.5	237.5	250.0	0.68	-0.63	-1.05
1,462.0	13.50	76.70	1,430.0	83.7	259.2	272.3	0.23	-0.21	0.42
1,556.0	13.40	73.40	1,521.4	89.3	280.3	294.2	0.82	-0.11	-3.51
1,651.0	15.00	72.90	1,613.5	96.1	302.6	317.5	1.69	1.68	-0.53
1,745.0	15.40	71.20	1,704.2	103.7	326.1	342.1	0.64	0.43	-1.81
1,840.0	16.20	69.60	1,795.6	112.4	350.4	367.9	0.96	0.84	-1.68
1,935.0	16.20	71.30	1,886.8	121.2	375.4	394.4	0.50	0.00	1.79
2,030.0	15.40	70.80	1,978.2	129.6	399.9	420.2	0.85	-0.84	-0.53
2,123.0	15.70	67.90	2,067.8	138.4	423.2	445.1	0.90	0.32	-3.12
2,218.0	16.40	71.20	2,159.1	147.6	447.8	471.3	1.21	0.74	3.47
2,312.0	16.80	72.70	2,249.2	155.9	473.3	498.1	0.62	0.43	1.60
2,407.0	16.80	71.10	2,340.2	164.4	499.4	525.6	0.49	0.00	-1.68
2,501.0	16.40	72.10	2,430.3	172.9	524.9	552.4	0.52	-0.43	1.06
2,596.0	16.20	71.50	2,521.4	181.2	550.3	579.1	0.28	-0.21	-0.63
2,690.0	15.30	75.40	2,611.9	188.5	574.7	604.6	1.48	-0.96	4.15
2,785.0	14.60	76.60	2,703.7	194.4	598.5	629.0	0.81	-0.74	1.26
2,880.0	14.90	74.90	2,795.6	200.4	621.9	653.2	0.55	0.32	-1.79
2,968.0	15.00	73.10	2,880.6	206.7	643.7	675.9	0.54	0.11	-2.05
3,073.0	14.10	70.00	2,982.2	215.0	668.7	702.3	1.13	-0.86	-2.95
3,168.0	12.60	76.90	3,074.6	221.3	689.7	724.2	2.30	-1.58	7.26
3,262.0	12.70	76.80	3,166.4	226.0	709.8	744.7	0.11	0.11	-0.11
3,357.0	12.40	76.60	3,259.1	230.7	729.8	765.3	0.32	-0.32	-0.21
3,451.0	13.70	76.00	3,350.7	235.8	750.5	786.5	1.39	1.38	-0.64
3,546.0	13.50	75.90	3,443.0	241.2	772.1	808.8	0.21	-0.21	-0.11
3,641.0	12.50	74.50	3,535.6	246.6	792.8	830.2	1.10	-1.05	-1.47
3,736.0	12.80	76.50	3,628.3	251.8	812.9	851.0	0.56	0.32	2.11
3,830.0	14.20	74.60	3,719.7	257.3	834.2	872.9	1.56	1.49	-2.02
3,925.0	13.20	73.80	3,812.0	263.4	855.8	895.4	1.07	-1.05	-0.84
4,020.0	12.70	75.50	3,904.5	269.1	876.4	916.7	0.66	-0.53	1.79
4,114.0	14.60	74.80	3,995.9	274.8	897.8	938.9	2.03	2.02	-0.74
4,209.0	14.40	74.50	4,087.9	281.1	920.7	962.6	0.22	-0.21	-0.32
4,303.0	13.50	74.30	4,179.1	287.2	942.6	985.3	0.96	-0.96	-0.21
4,398.0	14.70	74.90	4,271.2	293.3	964.9	1,008.4	1.27	1.26	0.63
4,492.0	14.40	74.30	4,362.2	299.6	987.6	1,032.1	0.36	-0.32	-0.64
4,587.0	13.80	74.00	4,454.3	305.9	1,009.9	1,055.2	0.64	-0.63	-0.32
4,682.0	14.70	76.00	4,546.4	311.9	1,032.5	1,078.6	1.08	0.95	2.11

<b>Company:</b>	Caerus Oil & Gas	<b>Local Co-ordinate Reference:</b>	Well BJU B26 FED 21D-26 496 - Slot 21D-26
<b>Project:</b>	Garfield County, CO	<b>TVD Reference:</b>	RKB @ 8241.0usft (H&P #330)
<b>Site:</b>	BJU B26 496 Pad	<b>MD Reference:</b>	RKB @ 8241.0usft (H&P #330)
<b>Well:</b>	BJU B26 FED 21D-26 496	<b>North Reference:</b>	True
<b>Wellbore:</b>	Wellbore #1	<b>Survey Calculation Method:</b>	Minimum Curvature
<b>Design:</b>	Wellbore #1	<b>Database:</b>	EDM 5000.1 Single User Db

Survey									
Measured Depth (usft)	Inclination (°)	Azimuth (°)	Vertical Depth (usft)	+N/-S (usft)	+E/-W (usft)	Vertical Section (usft)	Dogleg Rate (°/100usft)	Build Rate (°/100usft)	Turn Rate (°/100usft)
4,776.0	14.40	76.50	4,637.4	317.5	1,055.4	1,102.2	0.35	-0.32	0.53
4,871.0	14.80	71.50	4,729.3	324.2	1,078.4	1,126.1	1.39	0.42	-5.26
4,965.0	14.30	70.80	4,820.3	331.8	1,100.8	1,149.7	0.56	-0.53	-0.74
5,060.0	13.90	70.60	4,912.5	339.4	1,122.6	1,172.8	0.42	-0.42	-0.21
5,155.0	13.00	70.60	5,004.9	346.8	1,143.5	1,194.9	0.95	-0.95	0.00
5,249.0	14.90	69.30	5,096.1	354.6	1,164.7	1,217.5	2.05	2.02	-1.38
5,344.0	14.60	68.50	5,188.0	363.3	1,187.3	1,241.6	0.38	-0.32	-0.84
5,439.0	13.80	68.70	5,280.0	371.8	1,209.0	1,264.8	0.84	-0.84	0.21
5,534.0	13.10	69.30	5,372.4	379.7	1,229.6	1,286.8	0.75	-0.74	0.63
5,628.0	14.30	70.30	5,463.8	387.4	1,250.5	1,309.0	1.30	1.28	1.06
5,723.0	13.80	70.70	5,555.9	395.1	1,272.3	1,332.1	0.54	-0.53	0.42
5,818.0	13.40	70.10	5,648.3	402.6	1,293.3	1,354.4	0.45	-0.42	-0.63
5,912.0	14.70	72.40	5,739.4	409.9	1,314.9	1,377.2	1.50	1.38	2.45
6,007.0	13.70	72.30	5,831.5	416.9	1,337.1	1,400.5	1.05	-1.05	-0.11
6,101.0	12.70	72.20	5,923.1	423.5	1,357.6	1,421.9	1.06	-1.06	-0.11
6,196.0	14.40	72.60	6,015.4	430.2	1,378.8	1,444.2	1.79	1.79	0.42
6,291.0	13.60	73.60	6,107.6	436.9	1,400.8	1,467.2	0.88	-0.84	1.05
6,385.0	12.90	73.50	6,199.1	443.0	1,421.4	1,488.7	0.75	-0.74	-0.11
6,480.0	11.10	72.70	6,292.0	448.7	1,440.3	1,508.5	1.90	-1.89	-0.84
6,574.0	11.80	73.90	6,384.1	454.1	1,458.2	1,527.1	0.79	0.74	1.28
6,669.0	10.00	73.90	6,477.4	459.1	1,475.5	1,545.1	1.89	-1.89	0.00
6,763.0	11.10	77.30	6,569.8	463.3	1,492.1	1,562.3	1.34	1.17	3.62
6,858.0	10.40	76.80	6,663.2	467.3	1,509.4	1,580.0	0.74	-0.74	-0.53
6,953.0	11.20	74.20	6,756.5	471.8	1,526.6	1,597.7	0.99	0.84	-2.74
7,047.0	11.20	73.10	6,848.7	476.9	1,544.2	1,616.0	0.23	0.00	-1.17
7,142.0	10.50	74.30	6,942.0	481.9	1,561.3	1,633.9	0.77	-0.74	1.26
7,236.0	10.00	74.20	7,034.5	486.5	1,577.4	1,650.6	0.53	-0.53	-0.11
7,331.0	9.40	74.40	7,128.1	490.8	1,592.8	1,666.6	0.63	-0.63	0.21
7,426.0	9.10	74.70	7,221.9	494.9	1,607.5	1,681.9	0.32	-0.32	0.32
7,520.0	8.80	76.20	7,314.7	498.5	1,621.7	1,696.5	0.40	-0.32	1.60
7,615.0	8.10	77.50	7,408.7	501.7	1,635.3	1,710.4	0.76	-0.74	1.37
7,710.0	7.70	76.70	7,502.8	504.6	1,648.0	1,723.5	0.44	-0.42	-0.84
7,804.0	7.00	68.90	7,596.0	508.1	1,659.5	1,735.5	1.30	-0.74	-8.30
7,899.0	6.60	67.90	7,690.4	512.3	1,669.9	1,746.7	0.44	-0.42	-1.05
7,993.0	6.10	67.10	7,783.8	516.3	1,679.5	1,757.0	0.54	-0.53	-0.85
8,088.0	5.80	66.30	7,878.3	520.1	1,688.6	1,766.8	0.33	-0.32	-0.84
8,183.0	5.40	67.30	7,972.8	523.8	1,697.1	1,776.0	0.43	-0.42	1.05
8,278.0	5.10	68.60	8,067.4	527.1	1,705.2	1,784.6	0.34	-0.32	1.37
8,372.0	4.70	75.40	8,161.1	529.6	1,712.8	1,792.7	0.75	-0.43	7.23
8,467.0	4.40	78.80	8,255.8	531.3	1,720.1	1,800.2	0.42	-0.32	3.58
8,561.0	4.00	80.20	8,349.5	532.5	1,726.9	1,807.0	0.44	-0.43	1.49
8,656.0	4.00	79.10	8,444.3	533.7	1,733.4	1,813.6	0.08	0.00	-1.16
8,751.0	3.80	82.20	8,539.1	534.8	1,739.8	1,820.0	0.31	-0.21	3.26

<b>Company:</b>	Caerus Oil & Gas	<b>Local Co-ordinate Reference:</b>	Well BJU B26 FED 21D-26 496 - Slot 21D-26
<b>Project:</b>	Garfield County, CO	<b>TVD Reference:</b>	RKB @ 8241.0usft (H&P #330)
<b>Site:</b>	BJU B26 496 Pad	<b>MD Reference:</b>	RKB @ 8241.0usft (H&P #330)
<b>Well:</b>	BJU B26 FED 21D-26 496	<b>North Reference:</b>	True
<b>Wellbore:</b>	Wellbore #1	<b>Survey Calculation Method:</b>	Minimum Curvature
<b>Design:</b>	Wellbore #1	<b>Database:</b>	EDM 5000.1 Single User Db

Survey										
Measured Depth (usft)	Inclination (°)	Azimuth (°)	Vertical Depth (usft)	+N/-S (usft)	+E/-W (usft)	Vertical Section (usft)	Dogleg Rate (°/100usft)	Build Rate (°/100usft)	Turn Rate (°/100usft)	
8,845.0	3.20	89.30	8,632.9	535.2	1,745.5	1,825.6	0.79	-0.64	7.55	
8,940.0	2.60	94.60	8,727.8	535.1	1,750.3	1,830.2	0.69	-0.63	5.58	
9,034.0	2.10	113.80	8,821.7	534.2	1,754.0	1,833.5	0.98	-0.53	20.43	
9,129.0	2.10	117.10	8,916.6	532.7	1,757.1	1,836.1	0.13	0.00	3.47	
9,224.0	1.90	130.40	9,011.6	530.9	1,759.9	1,838.2	0.53	-0.21	14.00	
9,318.0	0.80	178.90	9,105.6	529.2	1,761.1	1,838.9	1.59	-1.17	51.60	
9,413.0	1.10	248.20	9,200.6	528.2	1,760.3	1,837.8	1.17	0.32	72.95	
9,508.0	1.20	279.20	9,295.5	528.0	1,758.4	1,836.0	0.65	0.11	32.63	
9,602.0	1.10	315.00	9,389.5	528.8	1,756.8	1,834.7	0.76	-0.11	38.09	
9,697.0	1.40	300.30	9,484.5	530.1	1,755.2	1,833.4	0.46	0.32	-15.47	
9,791.0	1.50	286.60	9,578.5	531.0	1,753.0	1,831.6	0.38	0.11	-14.57	
9,886.0	1.30	289.90	9,673.4	531.7	1,750.8	1,829.7	0.23	-0.21	3.47	
9,980.0	1.00	291.40	9,767.4	532.4	1,749.0	1,828.2	0.32	-0.32	1.60	
10,075.0	1.00	291.20	9,862.4	533.0	1,747.5	1,826.9	0.00	0.00	-0.21	
10,170.0	1.60	265.80	9,957.4	533.2	1,745.4	1,824.9	0.86	0.63	-26.74	
10,264.0	1.80	263.30	10,051.3	532.9	1,742.6	1,822.2	0.23	0.21	-2.66	
10,359.0	1.80	271.80	10,146.3	532.8	1,739.6	1,819.3	0.28	0.00	8.95	
10,453.0	2.10	255.20	10,240.2	532.4	1,736.5	1,816.2	0.68	0.32	-17.66	
10,548.0	2.20	258.30	10,335.2	531.6	1,733.0	1,812.6	0.16	0.11	3.26	
10,643.0	2.20	258.60	10,430.1	530.9	1,729.5	1,809.0	0.01	0.00	0.32	
10,737.0	2.50	259.00	10,524.0	530.1	1,725.7	1,805.2	0.32	0.32	0.43	
10,832.0	2.60	254.40	10,618.9	529.1	1,721.6	1,800.9	0.24	0.11	-4.84	
10,927.0	2.50	255.10	10,713.8	528.0	1,717.5	1,796.7	0.11	-0.11	0.74	
11,021.0	2.90	245.60	10,807.7	526.5	1,713.3	1,792.3	0.64	0.43	-10.11	
11,116.0	3.40	247.20	10,902.6	524.4	1,708.6	1,787.1	0.53	0.53	1.68	
11,210.0	3.90	245.20	10,996.4	522.0	1,703.1	1,781.2	0.55	0.53	-2.13	
11,305.0	3.90	244.40	11,091.2	519.3	1,697.2	1,774.8	0.06	0.00	-0.84	
11,399.0	3.90	243.40	11,185.0	516.4	1,691.5	1,768.5	0.07	0.00	-1.06	
11,494.0	3.80	243.80	11,279.7	513.6	1,685.8	1,762.2	0.11	-0.11	0.42	
11,588.0	4.20	240.10	11,373.5	510.5	1,680.0	1,755.8	0.51	0.43	-3.94	
11,683.0	4.00	238.70	11,468.3	507.1	1,674.2	1,749.2	0.24	-0.21	-1.47	
11,777.0	4.00	235.30	11,562.0	503.5	1,668.7	1,742.9	0.25	0.00	-3.62	
11,872.0	4.30	238.50	11,656.8	499.7	1,662.9	1,736.4	0.40	0.32	3.37	
11,967.0	4.80	239.30	11,751.5	495.9	1,656.4	1,729.1	0.53	0.53	0.84	
12,062.0	5.30	242.20	11,846.1	491.8	1,649.1	1,720.9	0.59	0.53	3.05	
12,156.0	6.20	244.50	11,939.7	487.6	1,640.7	1,711.6	0.99	0.96	2.45	
12,251.0	5.70	250.60	12,034.1	483.8	1,631.6	1,701.9	0.85	-0.53	6.42	
12,318.0	6.10	249.60	12,100.8	481.4	1,625.2	1,695.0	0.62	0.60	-1.49	
TD @ 12378.0' MD / 12160.4' TVD										
12,378.0	6.10	249.60	12,160.4	479.2	1,619.2	1,688.6	0.00	0.00	0.00	



**KLX Directional Drilling**  
Survey Report



<b>Company:</b>	Caerus Oil & Gas	<b>Local Co-ordinate Reference:</b>	Well BJU B26 FED 21D-26 496 - Slot 21D-26
<b>Project:</b>	Garfield County, CO	<b>TVD Reference:</b>	RKB @ 8241.0usft (H&P #330)
<b>Site:</b>	BJU B26 496 Pad	<b>MD Reference:</b>	RKB @ 8241.0usft (H&P #330)
<b>Well:</b>	BJU B26 FED 21D-26 496	<b>North Reference:</b>	True
<b>Wellbore:</b>	Wellbore #1	<b>Survey Calculation Method:</b>	Minimum Curvature
<b>Design:</b>	Wellbore #1	<b>Database:</b>	EDM 5000.1 Single User Db

Design Annotations				
Measured Depth (usft)	Vertical Depth (usft)	Local Coordinates		Comment
		+N/-S (usft)	+E/-W (usft)	
120.0	120.0	0.1	0.4	Gyro Tie In @ 120.0'MD / 120.0' TVD
12,378.0	12,160.4	479.2	1,619.2	TD @ 12378.0' MD / 12160.4' TVD

Checked By: _____	Approved By: _____	Date: _____
-------------------	--------------------	-------------