

FREMONT ENVIRONMENTAL INC.

July 12, 2022

Mr. Daniel Peterson
Noble Energy Inc.
2115 117th Ave.
Greeley, CO 80634

Subject: **Site Investigation Report**
 Beeler 22-12, 13
 API # 05-123-20054
 NWNE Sec. 22, T4N, R67W
 Weld County, Colorado
 Fremont Project No. C022-013
 Facility # 331032, Remediation # 21781

Dear Mr. Peterson:

Enclosed please find a copy of the above referenced Site Investigation Report for the Beeler 22-12, 13 site in Weld County, Colorado. The enclosed report describes site investigation and sampling efforts to assess soil and groundwater quality at the site.

Please contact me at (303) 956-8714 if you require any additional information.

Fremont appreciates the opportunity to provide this service.

Sincerely,
FREMONT ENVIRONMENTAL INC.



Paul V. Henahan, P.E.
Senior Consultant

Enclosure

SITE INVESTIGATION REPORT

NOBLE ENERGY INC.

BEELER 22-12, 13

WELD COUNTY, COLORADO

FREMONT PROJECT NO. C022-013

FACILITY # 331032, REMEDIATION # 21781

Prepared by:

**Fremont Environmental Inc.
1759 Redwing Lane
Broomfield, CO 80020
(303) 956-8714**

July 12, 2022

TABLE OF CONTENTS

1.0 INTRODUCTION	1
2.0 BACKGROUND INFORMATION	1
2.1 Site Location	1
2.2 Site History	1
3.0 SITE INVESTIGATION ACTIVITIES.....	2
3.1 Soil Borings/Monitoring Wells.....	2
4.0 DISCUSSION	3
5.0 REMARKS.....	4

Tables

Table 1:	Summary of VOC and TPH Soil Chemistry
Table 2:	Summary of Polycyclic Aromatic Hydrocarbon Soil Chemistry

Figures

Figure 1:	Site Location Map
Figure 2:	Site Map
Figure 3:	Cross Section Map
Figure 4:	Cross Sections
Figure 5:	Soil Chemistry Map

Appendices

Appendix A:	Boring Logs
Appendix B:	Laboratory Documentation

SITE INVESTIGATION REPORT
NOBLE ENERGY INC.
BEELER 22-12, 13
WELD COUNTY, COLORADO
FREMONT PROJECT NO. C022-013
FACILITY # 331032, REMEDIATION # 21781

1.0 INTRODUCTION

The purpose of this document is to present information collected to delineate the extent of petroleum-impacted soil at the Beeler 22-12, 13 (Beeler) tank battery location in Weld County, Colorado. Impacted soil and groundwater were identified at the Beeler tank battery during facility closure activities. A site investigation was completed on May 3, 2022. Fifteen soil borings were advanced at the site to delineate the magnitude and extent of subsurface soil and groundwater impacts.

2.0 BACKGROUND INFORMATION

2.1 Site Location

The Beeler 22-12, 13 tank battery is located approximately four miles south of Milliken, Colorado in Weld County as shown on Figure 1. The site is located in a rural and agricultural area approximately 2.3 miles south of the intersection of County Road 44 and County Road 21. The location is further described as the NW ¼ of the NE ¼ of Section 22, Township 4N, Range 67W.

2.2 Site History

The site consists of the Beeler 22-12, 13 tank battery which services the Beeler 22-12 and Beeler 22-13 natural gas wells. The Beeler 22-12 natural gas well was drilled in 2001 to a depth of approximately 7,398 feet.

Historical releases were discovered beneath multiple pieces of equipment at the Beeler tank battery during decommissioning activities in March 2022. A site investigation to determine the extent of soil impacts was undertaken on May 3, 2022. Groundwater was not encountered at that time.

3.0 SITE INVESTIGATION ACTIVITIES

3.1 Soil Borings/Monitoring Wells

A total of 15 soil borings were advanced utilizing a Geoprobe rig during the single-day site investigation conducted at the former Beeler tank battery on May 3, 2022. One of the 15 borings was completed as a 1-inch diameter, temporary PVC stick-up monitoring well, which has not produced water since its installation. These borings were used to delineate the extent of soil impacts at the site. The locations of the soil borings are illustrated on the attached figures.

Generally, the subsurface consists of clay that extends to a maximum depth of approximately six feet. The clay is underlain by a poorly graded sandy clay extending to a depth of at least 12 feet. The maximum depth of the borings was 12 feet. Refusal was encountered across the site between 9 and 12 feet. Geologic cross sections illustrating the soil lithology are presented on Figure 4.

The 1-inch diameter monitoring well was constructed with a 10-foot section of well screen placed at a total depth of approximately 12 feet and completed at the ground surface as a temporary PVC stick-up well. The well remains dry after several gauging attempts following the site investigation. Soil samples from each of the borings were evaluated in the field using a photoionization detector (PID). Logs of the borings and monitoring well are presented in Appendix A.

Soil samples were collected from each of the borings and sent to Summit Scientific, Inc. in Golden, Colorado for the analyses of for benzene, toluene, ethylbenzene and total xylenes (BTEX), naphthalene, 1,2,4-trimethylbenzene, 1,3,5-trimethylbenzene (TMB), Total Petroleum Hydrocarbons – Gasoline Range Organics (TPH-GRO) by EPA method 8260B, TPH – Diesel Range Organics (TPH-DRO), Extended Range Organics (TPH-ORO) by EPA method 8015, Polycyclic Aromatic Hydrocarbons (PAH) Acenaphthene, Anthracene, Benzo (a) anthracene, Benzo (a) pyrene, Benzo (b) fluoranthene, Chrysene, Dibenz (a,h) anthracene, Fluoranthene, Fluorene, Indeno (1,2,3-cd) pyrene, Pyrene, 1-Methylnaphthalene, 2-Methylnaphthalene by EPA method 8270D.

Soil impacts exceeding the COGCC Table 915-1 protection of groundwater soil screening levels (PGSSLs) for 1-Methylnaphthalene were observed in two of the 15 borings. The soil chemistry is presented on Figure 5 and summarized in Tables 1 and 2. The laboratory's report is provided in Appendix B.

4.0 DISCUSSION

A site investigation was conducted at the Beeler location on May 3, 2022 resulting from a historical release discovered beneath the separator, produced water vault and aboveground storage tank during site decommissioning activities. Fifteen soil boings were advanced and one was completed as a temporary monitoring well, which remains dry, to delineate the magnitude and extent of soil and groundwater impacts.

Soil impacts above the COGCC Table 915-1 protection of groundwater soil screening levels were observed in two of the 15 soil borings. The soil data are illustrated and summarized in the attached tables and figures.

Impacted soils at the Beeler tank battery location will be removed via excavation. The excavation extent will be based on the location and depths of residual impacts observed during the site investigation. Noble will request closure under the COGCC Table 915-1 Protection of Groundwater Soil Screening levels following laboratory analysis showing unimpacted soils in the excavation sidewalls and floor in the area encompassing the residual soil impacts.

5.0 REMARKS

The discussion and conclusions contained in this report represent our professional opinions. These opinions are based on currently available information and are arrived at in accordance with currently accepted hydrogeologic and engineering practices at this time and location. Other than this, no warranty is implied or intended.

This report was prepared by **FREMONT ENVIRONMENTAL INC.**



7/12/22

Date_____

Ethan D. Black, P.G.

Geologist

Reviewed by:



7/12/22

Date_____

Paul V. Henehan, P.E.

Senior Consultant

TABLES

TABLE 1
SUMMARY OF VOLATILE ORGANIC SOIL CHEMISTRY DATA
NOBLE ENERGY INC.
BEELER 22-12,13, WELD COUNTY, COLORADO
FREMONT PROJECT NO. C022-013

Sample	Depth (ft)	Date Sampled	Location	Benzene (mg/kg)	Toluene (mg/kg)	Ethyl-Benzene (mg/kg)	Xylenes (mg/kg)	1,2,4-Trimethyl-Benzene (mg/kg)	1,3,5-Trimethyl-Benzene (mg/kg)	Naphthalene (mg/kg)	TPH GRO (mg/kg)	TPH DRO (mg/kg)	TPH ORO (mg/kg)
AST01@1.0'	1	3/2/2022	Floor	<0.002	0.017	0.046	6.5	6.5	6.1	0.013	150	670	<50
B01@7.0'	7	3/3/2022	Floor	<0.002	<0.005	<0.005	<0.01	<0.005	<0.005	0.017	6.4	290	<50
S01@5.5'	5.5	3/3/2022	S Wall	<0.002	<0.005	<0.005	<0.01	<0.005	<0.005	<0.0038	<0.5	<50	<50
SEP01@6.0"	0.5	3/2/2022	Floor	0.023	0.3	0.41	<0.01	1.7	0.59	0.16	480	280	<50
SEP02@6.0"	0.5	3/2/2022	Floor	<0.002	<0.005	<0.005	<0.01	<0.005	<0.005	0.0047	0.56	<50	<50
SB-1 13ft	13	5/3/2022	Boring	<0.0020	<0.0050	<0.0050	<0.010	<0.0050	<0.0050	<0.0038	<0.5	<50	<50
SB-2 12ft	12	5/3/2022	Boring	<0.0020	<0.0050	<0.0050	<0.010	<0.0050	<0.0050	<0.0038	<0.5	<50	<50
SB-3 12ft	12	5/3/2022	Boring	<0.0020	<0.0050	<0.0050	<0.010	<0.0050	<0.0050	<0.0038	<0.5	<50	<50
SB-4 12ft	12	5/3/2022	Boring	<0.0020	<0.0050	<0.0050	<0.010	<0.0050	<0.0050	<0.0038	<0.5	<50	<50
SB-5 12ft	12	5/3/2022	Boring	<0.0020	<0.0050	<0.0050	<0.010	<0.0050	<0.0050	<0.0038	<0.5	<50	<50
SB-6 12ft	12	5/3/2022	Boring	<0.0020	<0.0050	<0.0050	<0.010	<0.0050	<0.0050	<0.0038	<0.5	<50	<50
SB-7 12ft	12	5/3/2022	Boring	<0.0020	<0.0050	<0.0050	<0.010	<0.0050	<0.0050	<0.0038	<0.5	<50	<50
SB-8 10ft	10	5/3/2022	Boring	<0.0020	<0.0050	<0.0050	<0.010	<0.0050	<0.0050	<0.0038	<0.5	<50	<50
SB-9 7ft	7	5/3/2022	Boring	<0.0020	<0.0050	<0.0050	<0.010	<0.0050	<0.0050	<0.0038	3.5	270	<50
SB-10 11ft	11	5/3/2022	Boring	<0.0020	<0.0050	<0.0050	<0.010	<0.0050	<0.0050	<0.0038	<0.5	<50	<50
SB-11 6ft	6	5/3/2022	Boring	<0.0020	<0.0050	<0.0050	<0.010	<0.0050	<0.0050	<0.0038	<0.5	<50	<50
SB-12 6ft	6	5/3/2022	Boring	<0.0020	<0.0050	<0.0050	<0.010	<0.0050	<0.0050	<0.0038	<0.5	170	<50
SB-13 10ft	10	5/3/2022	Boring	<0.0020	<0.0050	<0.0050	<0.010	<0.0050	<0.0050	<0.0038	<0.5	<50	<50
SB-14 6ft	6	5/3/2022	Boring	<0.0020	<0.0050	<0.0050	<0.010	<0.0050	<0.0050	<0.0038	<0.5	<50	<50
SB-15 10ft	10	5/3/2022	Boring	<0.0020	<0.0050	<0.0050	<0.010	<0.0050	<0.0050	<0.0038	<0.5	<50	<50
COGCC Table 915-1 Limits (Residential SSL)				1.2	490	5.8	58	30	27	2	500	500	500
COGCC Table 915-1 Limits (Protection of Groundwater SSL)				0.0026	0.69	0.78	9.9	0.0081	0.0087	0.0038	500	500	500

Bold faced values exceed the COGCC Table 915-1 concentrations

Blue highlighted 915-1 Limits indicate the referenced soil screening level (SSL)

* Summation of GRO+DRO+ORO must be less than 500 mg/kg

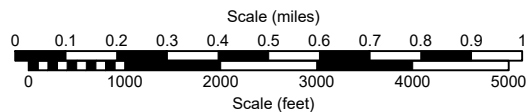
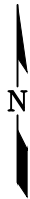
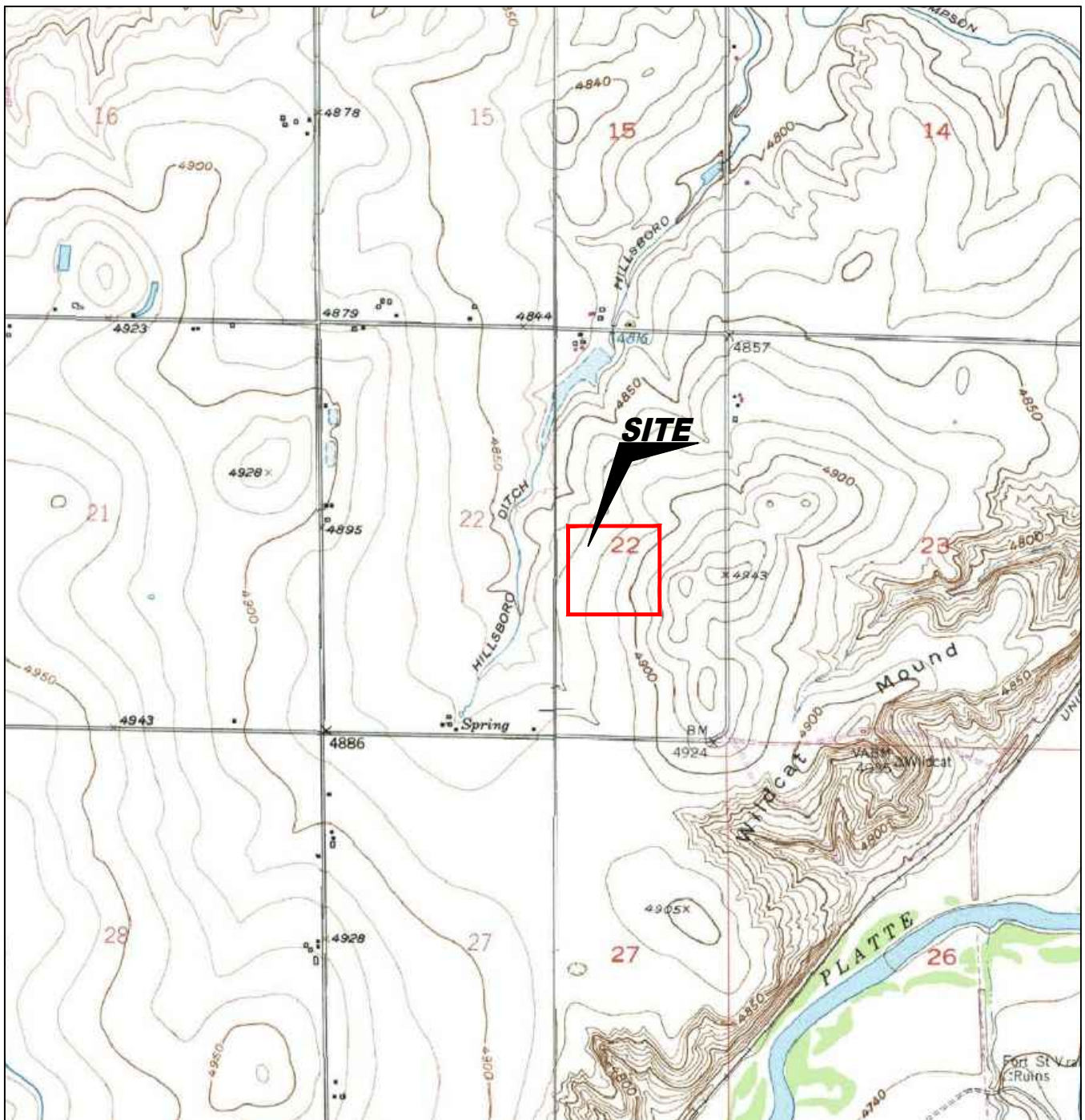
TABLE 2
SUMMARY OF POLYCYCLIC AROMATIC HYDROCARBON SOIL CHEMISTRY DATA
NOBLE ENERGY INC.
BEELER 22-12,13, WELD COUNTY, COLORADO
FREMONT PROJECT NO. C022-013

Sample	Depth (ft)	Date Sampled	Location	Acenaphthene (mg/kg)	Anthracene (mg/kg)	Benzo (a) anthracene (mg/kg)	Benzo (b) fluoranthene (mg/kg)	Benzo (k) fluoranthene (mg/kg)	Benzo (a) pyrene (mg/kg)	Chrysene (mg/kg)	Dibenz (a,h) anthracene (mg/kg)	Fluoranthene (mg/kg)	Fluorene (mg/kg)	Indeno (1,2,3-cd) pyrene (mg/kg)	Pyrene (mg/kg)	1-Methyl - naphthalene (mg/kg)	2-Methyl- naphthalene (mg/kg)
AST01 @ 1.0'	1	3/2/2022	Floor	<0.005	<0.005	<0.005	<0.005	<0.005	<0.005	0.0191	<0.005	<0.005	0.0608	<0.005	<0.005	0.554	1.33
B01 @ 7.0'	7	3/3/2022	Floor	<0.005	<0.005	<0.005	<0.005	<0.005	<0.005	0.00686	<0.005	<0.005	0.015	<0.005	<0.005	0.0571	0.152
S01 @ 5.5'	5.5	3/3/2022	S Wall	<0.005	<0.005	<0.005	<0.005	<0.005	<0.005	<0.005	<0.005	<0.005	<0.005	<0.005	<0.005	<0.005	<0.005
SEP01 @ 6.0"	0.5	3/2/2022	Floor	<0.005	<0.005	<0.005	<0.005	<0.005	<0.005	<0.005	<0.005	<0.005	0.0282	<0.005	<0.005	0.215	0.512
SEP02 @ 6.0"	0.5	3/2/2022	Floor	<0.005	<0.005	<0.005	<0.005	<0.005	<0.005	<0.005	<0.005	<0.005	<0.005	<0.005	<0.005	<0.005	<0.005
SB-1 13ft	13	5/3/2022	Boring	<0.00500	<0.00500	<0.00500	<0.00500	<0.00500	<0.00500	<0.00500	<0.00500	<0.00500	<0.00500	<0.00500	<0.00500	<0.00500	<0.00500
SB-2 12ft	12	5/3/2022	Boring	<0.00500	<0.00500	<0.00500	<0.00500	<0.00500	<0.00500	<0.00500	<0.00500	<0.00500	<0.00500	<0.00500	<0.00500	<0.00500	<0.00500
SB-3 12ft	12	5/3/2022	Boring	<0.00500	<0.00500	<0.00500	<0.00500	<0.00500	<0.00500	<0.00500	<0.00500	<0.00500	<0.00500	<0.00500	<0.00500	<0.00500	<0.00500
SB-4 12ft	12	5/3/2022	Boring	<0.00500	<0.00500	<0.00500	<0.00500	<0.00500	<0.00500	<0.00500	<0.00500	<0.00500	<0.00500	<0.00500	<0.00500	<0.00500	<0.00500
SB-5 12ft	12	5/3/2022	Boring	<0.00500	<0.00500	<0.00500	<0.00500	<0.00500	<0.00500	<0.00500	<0.00500	<0.00500	<0.00500	<0.00500	<0.00500	<0.00500	<0.00500
SB-6 12ft	12	5/3/2022	Boring	<0.00500	<0.00500	<0.00500	<0.00500	<0.00500	<0.00500	<0.00500	<0.00500	<0.00500	<0.00500	<0.00500	<0.00500	<0.00500	<0.00500
SB-7 12ft	12	5/3/2022	Boring	<0.00500	<0.00500	<0.00500	<0.00500	<0.00500	<0.00500	<0.00500	<0.00500	<0.00500	<0.00500	<0.00500	<0.00500	<0.00500	<0.00500
SB-8 10ft	10	5/3/2022	Boring	<0.00500	<0.00500	<0.00500	<0.00500	<0.00500	<0.00500	<0.00500	<0.00500	<0.00500	<0.00500	<0.00500	<0.00500	<0.00500	<0.00500
SB-9 7ft	7	5/3/2022	Boring	<0.00500	<0.00500	<0.00500	<0.00500	<0.00500	<0.00500	<0.00500	<0.00500	<0.00500	0.00647	<0.00500	<0.00500	0.0671	<0.00500
SB-10 11ft	11	5/3/2022	Boring	<0.00500	<0.00500	<0.00500	<0.00500	<0.00500	<0.00500	<0.00500	<0.00500	<0.00500	<0.00500	<0.00500	<0.00500	<0.00500	<0.00500
SB-11 6ft	6	5/3/2022	Boring	<0.00500	<0.00500	<0.00500	<0.00500	<0.00500	<0.00500	0.0320	<0.00500	<0.00500	<0.00500	<0.00500	0.0130	<0.00500	<0.00500
SB-12 6ft	6	5/3/2022	Boring	<0.00500	<0.00500	<0.00500	<0.00500	<0.00500	<0.00500	0.0236	<0.00500	<0.00500	<0.00500	<0.00500	0.00807	0.0247	<0.00500
SB-13 10ft	10	5/3/2022	Boring	<0.00500	<0.00500	<0.00500	<0.00500	<0.00500	<0.00500	<0.00500	<0.00500	<0.00500	<0.00500	<0.00500	<0.00500	<0.00500	<0.00500
SB-14 6ft	6	5/3/2022	Boring	<0.00500	<0.00500	<0.00500	<0.00500	<0.00500	<0.00500	<0.00500	<0.00500	<0.00500	<0.00500	<0.00500	<0.00500	<0.00500	<0.00500
SB-15 10ft	10	5/3/2022	Boring	<0.00500	<0.00500	<0.00500	<0.00500	<0.00500	<0.00500	<0.00500	<0.00500	<0.00500	<0.00500	<0.00500	<0.00500	<0.00500	<0.00500
COGCC Table 915-1 Limits (Residential SSL)				360	1800	1.1	1.1	11	0.11	110	0.11	240	240	1.1	180	18	24
COGCC Table 915-1 Limits (Protection of Groundwater SSL)				0.55	5.8	0.011	0.3	2.9	0.24	9	0.096	8.9	0.54	0.98	1.3	0.006	0.019

Bold faced values exceed the COGCC Table 915-1 concentrations

Blue highlighted 915-1 Limits indicate the referenced soil screening level (SSL)

FIGURES



USGS 7.5 MINUTE SERIES (TOPOGRAPHIC)

Figure 1
SITE LOCATION MAP

Noble Energy, Inc. ~ Beeler 22-12, 13
 NWNE Sec. 22, T4N, R67W, 6th PM
 Weld County, Colorado
 40.303521°, -104.873342°

Project # C022-013	Remediation # 21781	Facility # 331032
Date 7/21/22	Reviewed by EB	Filename 22013T





LEGEND

● SOIL BORING ○ ABOVE GROUND STORAGE TANK [FORMER] FORMER FACILITY - - - - - CONTAINMENT BERM

**Figure 2
SITE MAP**

Noble Energy, Inc. ~ Beeler 22-12, 13
 NWNE Sec. 22, T4N, R67W, 6th PM
 Weld County, Colorado
 40.303521°, -104.873342°

Project No. C022-013	API # 21781	Facility # 331032
Date 7/21/22	Reviewed By EB	Filename 22013QQ





LEGEND

- SOIL BORING
- ABOVE GROUND STORAGE TANK
- FORMER FORMER FACILITY
- CONTAINMENT BERM
- B — B' CROSS SECTION CUT LINE

Figure 3
CROSS SECTION MAP

Noble Energy, Inc. ~ Beeler 22-12, 13
 NWNE Sec. 22, T4N, R67W, 6th PM
 Weld County, Colorado
 40.303521°, -104.873342°

Project No. C022-013	API # 21781	Facility # 331032
Date 7/23/22	Reviewed By EB	Filename 22013QQ



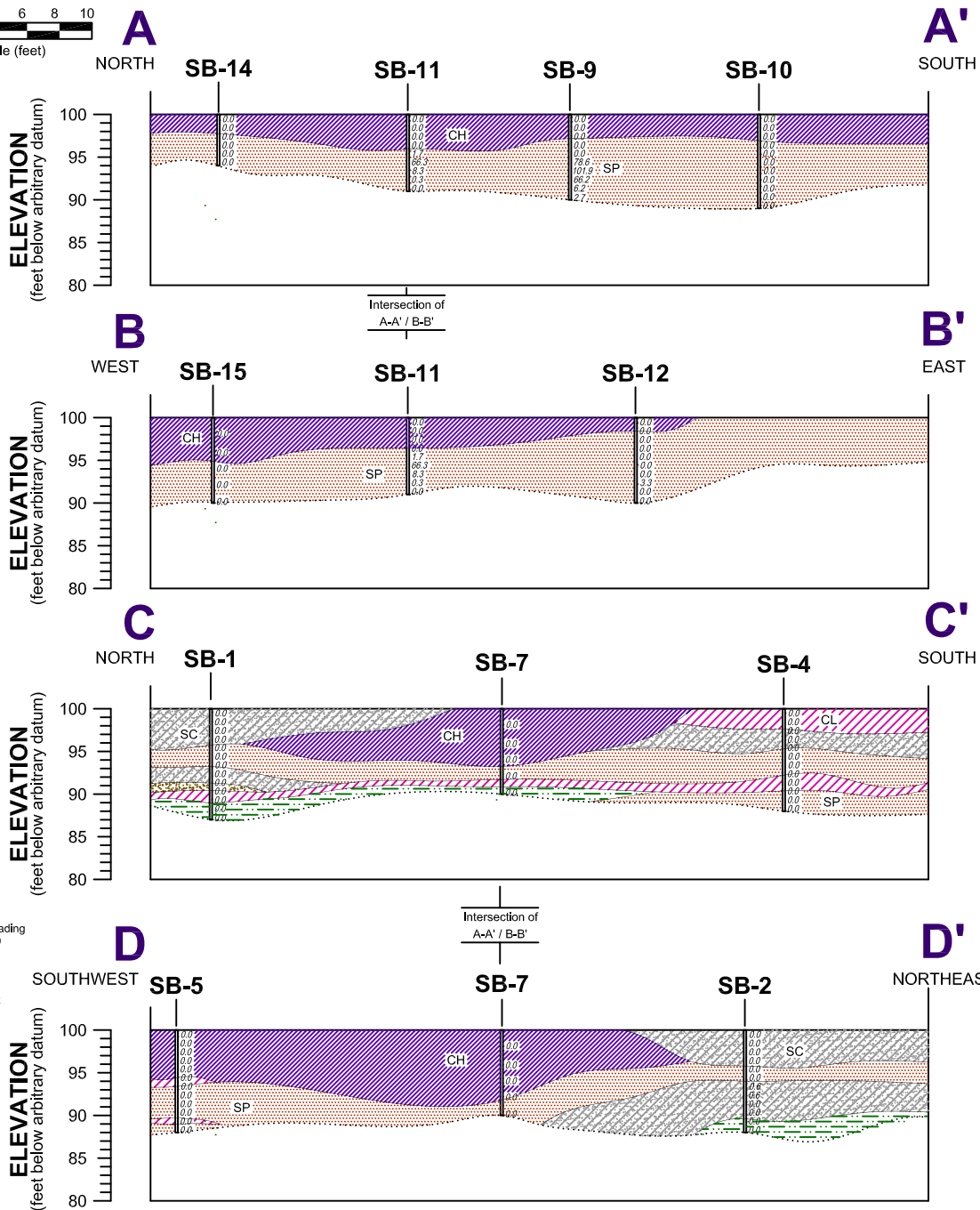
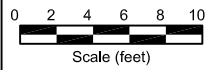
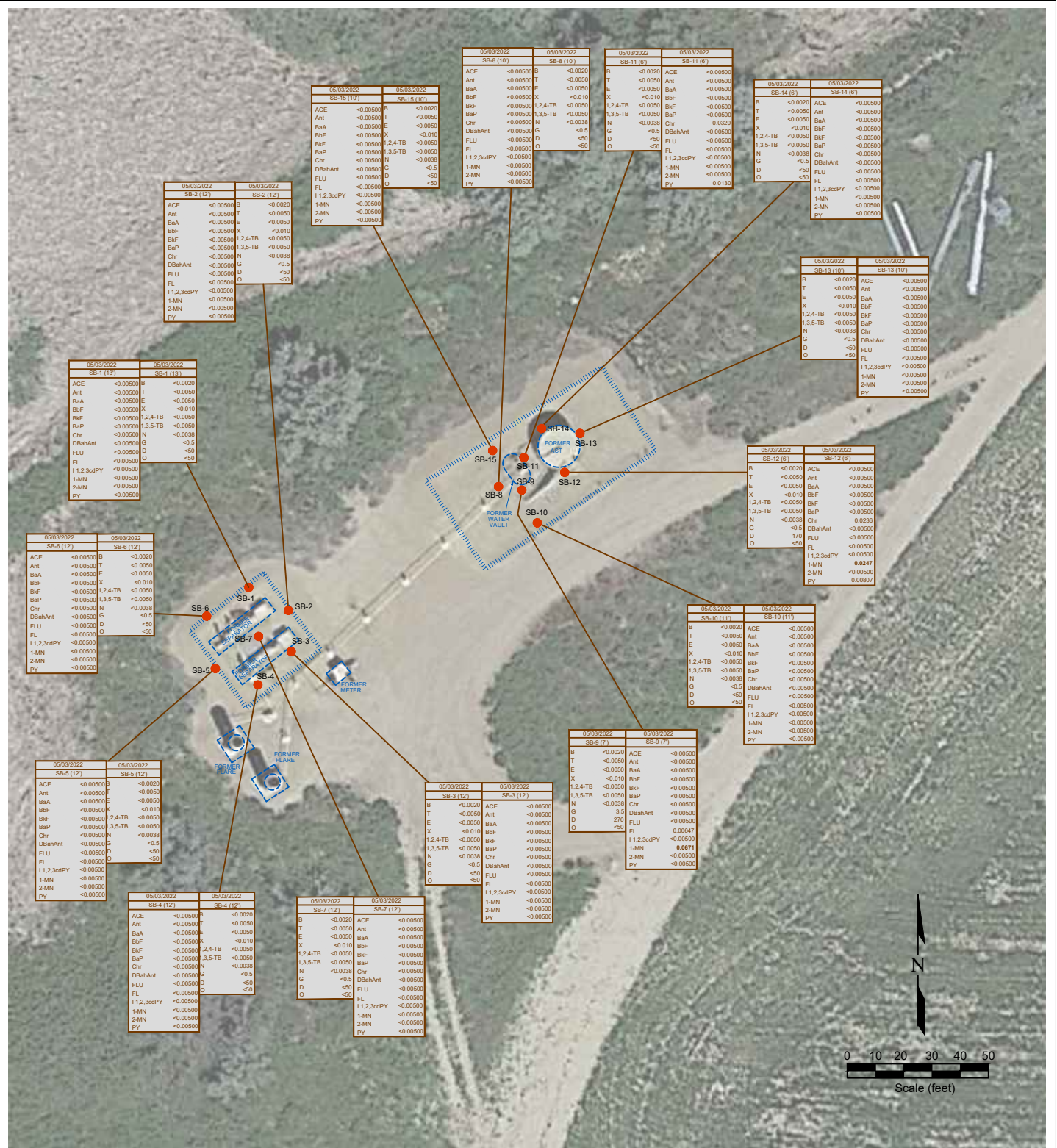


Figure 4
CROSS-SECTIONS A-A'; B-B'; C-C'; D-D'

Noble Energy, Inc. ~ Beeler 22-12, 13
NWNE Sec. 22, T4N, R67W, 6th PM
Weld County, Colorado
40.303521°, -104.873342°

Project No. C022-013	Prepared by 21781	Drawn by 331032
Date 7/23/22	Reviewed by EB	Filename 22013X





05/03/2022	DATE SAMPLED	05/03/2022	DATE SAMPLED
SB-1 (13)	SAMPLE ID and DEPTH (ft)	SB-1 (13)	SAMPLE ID and DEPTH (ft)
ACE	<0.0050	ACE	<0.0050
ANT	<0.0050	ANT	<0.0050
BAA	<0.0050	BAA	<0.0050
BAF	<0.0050	BAF	<0.0050
BAP	<0.0050	BAP	<0.0050
CHR	<0.0050	CHR	<0.0050
DBAHANT	<0.0050	DBAHANT	<0.0050
FLU	<0.0050	FLU	<0.0050
1,1,2,3,4-PY	<0.0050	1,1,2,3,4-PY	<0.0050
1-MN	<0.0050	1-MN	<0.0050
2-MN	<0.0050	2-MN	<0.0050
PY	<0.0050	PY	<0.0050

05/03/2022	DATE SAMPLED	05/03/2022	DATE SAMPLED
SB-1 (13)	SAMPLE ID and DEPTH (ft)	SB-1 (13)	SAMPLE ID and DEPTH (ft)
ACE	<0.0050	ACE	<0.0050
ANT	<0.0050	ANT	<0.0050
BAA	<0.0050	BAA	<0.0050
BAF	<0.0050	BAF	<0.0050
BAP	<0.0050	BAP	<0.0050
CHR	<0.0050	CHR	<0.0050
DBAHANT	<0.0050	DBAHANT	<0.0050
FLU	<0.0050	FLU	<0.0050
1,1,2,3,4-PY	<0.0050	1,1,2,3,4-PY	<0.0050
1-MN	<0.0050	1-MN	<0.0050
2-MN	<0.0050	2-MN	<0.0050
PY	<0.0050	PY	<0.0050

05/03/2022	DATE SAMPLED	05/03/2022	DATE SAMPLED
SB-1 (13)	SAMPLE ID and DEPTH (ft)	SB-1 (13)	SAMPLE ID and DEPTH (ft)
ACE	<0.0050	ACE	<0.0050
ANT	<0.0050	ANT	<0.0050
BAA	<0.0050	BAA	<0.0050
BAF	<0.0050	BAF	<0.0050
BAP	<0.0050	BAP	<0.0050
CHR	<0.0050	CHR	<0.0050
DBAHANT	<0.0050	DBAHANT	<0.0050
FLU	<0.0050	FLU	<0.0050
1,1,2,3,4-PY	<0.0050	1,1,2,3,4-PY	<0.0050
1-MN	<0.0050	1-MN	<0.0050
2-MN	<0.0050	2-MN	<0.0050
PY	<0.0050	PY	<0.0050

05/03/2022	DATE SAMPLED	05/03/2022	DATE SAMPLED
SB-1 (13)	SAMPLE ID and DEPTH (ft)	SB-1 (13)	SAMPLE ID and DEPTH (ft)
ACE	<0.0050	ACE	<0.0050
ANT	<0.0050	ANT	<0.0050
BAA	<0.0050	BAA	<0.0050
BAF	<0.0050	BAF	<0.0050
BAP	<0.0050	BAP	<0.0050
CHR	<0.0050	CHR	<0.0050
DBAHANT	<0.0050	DBAHANT	<0.0050
FLU	<0.0050	FLU	<0.0050
1,1,2,3,4-PY	<0.0050	1,1,2,3,4-PY	<0.0050
1-MN	<0.0050	1-MN	<0.0050
2-MN	<0.0050	2-MN	<0.0050
PY	<0.0050	PY	<0.0050

05/03/2022	DATE SAMPLED	05/03/2022	DATE SAMPLED
SB-1 (13)	SAMPLE ID and DEPTH (ft)	SB-1 (13)	SAMPLE ID and DEPTH (ft)
ACE	<0.0050	ACE	<0.0050
ANT	<0.0050	ANT	<0.0050
BAA	<0.0050	BAA	<0.0050
BAF	<0.0050	BAF	<0.0050
BAP	<0.0050	BAP	<0.0050
CHR	<0.0050	CHR	<0.0050
DBAHANT	<0.0050	DBAHANT	<0.0050
FLU	<0.0050	FLU	<0.0050
1,1,2,3,4-PY	<0.0050	1,1,2,3,4-PY	<0.0050
1-MN	<0.0050	1-MN	<0.0050
2-MN	<0.0050	2-MN	<0.0050
PY	<0.0050	PY	<0.0050

05/03/2022	DATE SAMPLED	05/03/2022	DATE SAMPLED
SB-1 (13)	SAMPLE ID and DEPTH (ft)	SB-1 (13)	SAMPLE ID and DEPTH (ft)
ACE	<0.0050	ACE	<0.0050
ANT	<0.0050	ANT	<0.0050
BAA	<0.0050	BAA	<0.0050
BAF	<0.0050	BAF	<0.0050
BAP	<0.0050	BAP	<0.0050
CHR	<0.0050	CHR	<0.0050
DBAHANT	<0.0050	DBAHANT	<0.0050
FLU	<0.0050	FLU	<0.0050
1,1,2,3,4-PY	<0.0050	1,1,2,3,4-PY	<0.0050
1-MN	<0.0050	1-MN	<0.0050
2-MN	<0.0050	2-MN	<0.0050
PY	<0.0050	PY	<0.0050

05/03/2022	DATE SAMPLED	05/03/2022	DATE SAMPLED
SB-1 (13)	SAMPLE ID and DEPTH (ft)	SB-1 (13)	SAMPLE ID and DEPTH (ft)
ACE	<0.0050	ACE	<0.0050
ANT	<0.0050	ANT	<0.0050
BAA	<0.0050	BAA	<0.0050
BAF	<0.0050	BAF	<0.0050
BAP	<0.0050	BAP	<0.0050
CHR	<0.0050	CHR	<0.0050
DBAHANT	<0.0050	DBAHANT	<0.0050
FLU	<0.0050	FLU	<0.0050
1,1,2,3,4-PY	<0.0050	1,1,2,3,4-PY	<0.0050
1-MN	<0.0050	1-MN	<0.0050
2-MN	<0.0050	2-MN	<0.0050
PY	<0.0050	PY	<0.0050

Project No.
C022-013

API #
21781

Facility #
331032

Date
7/23/22

Reviewed By
EB

Filename
22013QQ



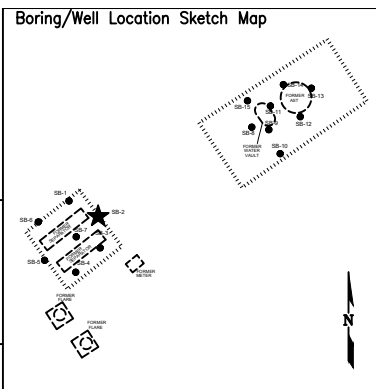
APPENDIX A

BORING LOGS

BORING/WELL CONSTRUCTION LOG

Page 1 of 1

Boring/Well No. SB-2		Total Depth 12'	Location Noble Energy, Inc. Beeler 22-12, 13 NWNE Sec 22, T4N, R67W, 6th PM Weld County, Colorado		
Project No./Name C022-013 Noble Beeler 22-12, 13			Approved By		
Drilling Contractor/Driller DrillPro/Terrence, Hayward					
Geologist/Office Ethan Black/Fremont Environmental, Inc.			Start/Finish Date 05/03/2022		
Drilling Equipment/Method Geoprobe			Size/Type of Bit 2.5" direct push	Sampling Method direct push	
Well Installed? Yes <input type="checkbox"/> No <input checked="" type="checkbox"/>		Casing Mtrl./Dia. .	Screen: Type . Mtrl. . Length 10' Dia. 2" Slot Size .		
Elevation of: (ft. above datum)		Ground Surface .	Top of Well Casing .	Top of Screen .	Bottom of Screen .
				Ground Water Surface/Date Measured .	

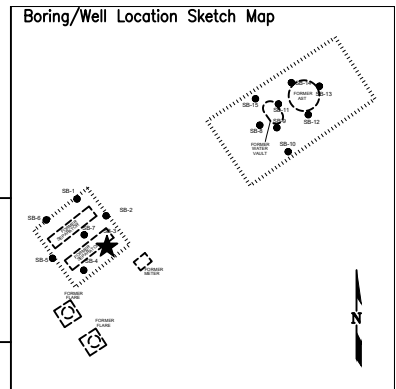


DEPTH (feet)	WELL CONSTRUCTION				LITHOLOGY		Penetration Rate (blows/6")	Recovery (%)	Sample Interval (feet)	PID Values (ppm)
					GRAPHIC LOG	VISUAL DESCRIPTION				
5					SC	Sandy Clay: brown to dark brown, fine to medium sand, moist				0.0
										0.0
										0.0
										0.0
										0.0
10					SP	Sand: tan, fine, slightly moist, some oxidization				0.0
										0.0
										0.0
										0.0
										0.0
15					SC	Sandy Clay: tan, slightly plastic, moist				0.0
										0.6
										0.6
										0.0
										0.0
20						- weathered sand stone				0.0
										0.0
										0.0
										0.0
										0.0
						TD - 12' Hit Refusal				0.0

BORING/WELL CONSTRUCTION LOG

Page 1 of 1

Boring/Well No. SB-3		Total Depth 12'		Location Noble Energy, Inc. Beeler 22-12, 13 NWNE Sec 22, T4N, R67W, 6th PM Weld County, Colorado	
Project No./Name C022-013 Noble Beeler 22-12, 13				Approved By	
Drilling Contractor/Driller DrillPro/Terrence, Hayward					
Geologist/Office Ethan Black/Fremont Environmental, Inc.					
Drilling Equipment/Method Geoprobe		Size/Type of Bit 2.5" direct push		Sampling Method direct push	
				Start/Finish Date 05/03/2022	
Well Installed? Yes <input type="checkbox"/> No <input checked="" type="checkbox"/>		Casing Mtrl./Dia. .		Screen: Type . Mtrl. . Length 10' Dia. 2" Slot Size .	
Elevation of: (ft. above datum)		Ground Surface . Top of Well Casing .		Top of Screen . Bottom of Screen . Ground Water Surface/Date Measured .	



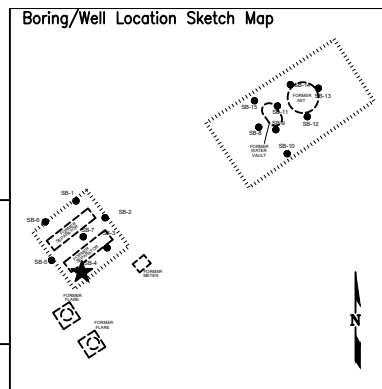
DEPTH (feet)	WELL CONSTRUCTION			LITHOLOGY		Penetration Rate (blows/6")	Recovery (%)	Sample Interval (feet)	PID Values (ppm)
				GRAPHIC LOG	VISUAL DESCRIPTION				
5				CL	Clay: brown, non-plastic, slightly moist				0.0
									0.0
									0.0
									0.0
									0.0
									0.0
									0.0
									0.0
									0.0
									0.0
10				SP	Sand: tan, fine, slightly moist, some oxidization				0.0
									0.0
									0.0
									0.0
									0.0
									0.0
									0.0
									0.0
									0.0
15									0.0
									0.0
									0.0
									0.0
									0.0
									0.0
									0.0
									0.0
20									0.0

TD - 12' Hit Refusal

BORING/WELL CONSTRUCTION LOG

Page 1 of 1

Boring/Well No. SB-4		Total Depth 12'	Location Noble Energy, Inc. Beeler 22-12, 13 NWNE Sec 22, T4N, R67W, 6th PM Weld County, Colorado	
Project No./Name C022-013 Noble Beeler 22-12, 13			Approved By	
Drilling Contractor/Driller DrillPro/Terrence, Hayward				
Geologist/Office Ethan Black/Fremont Environmental, Inc.				
Drilling Equipment/Method Geoprobe		Size/Type of Bit 2.5" direct push	Sampling Method direct push	Start/Finish Date 05/03/2022
Well Installed? Yes <input type="checkbox"/> No <input checked="" type="checkbox"/>		Casing Mtrl./Dia. .	Screen: Type . Mtrl. . Length 10' Dia. 2" Slot Size .	
Elevation of: (ft. above datum)		Ground Surface .	Top of Well Casing .	Top of Screen .
		Bottom of Screen .	Ground Water Surface/Date Measured .	



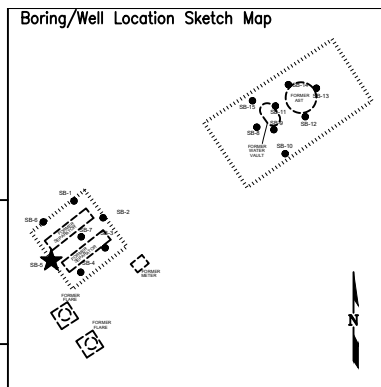
DEPTH (feet)	WELL CONSTRUCTION				LITHOLOGY		Penetration Rate (blows/6")	Recovery (%)	Sample Interval (feet)	PID Values (ppm)
					GRAPHIC LOG	VISUAL DESCRIPTION				
5					CL	Clay: brown, plastic, moist				0.0
										0.0
					SC	Sandy clay: tan, non-plastic, silty, moist				0.0
										0.0
					SP	Sand: tan, orange, fine, moist				0.0
10										0.0
					CL	Clay: beige, gray, brown, non-plastic, silty moist, mineralized				0.0
										0.0
										0.0
					SP	Sand:				0.0
15										0.0
										0.0
										0.0
										0.0
										0.0
20										0.0
										0.0
										0.0
										0.0
										0.0

TD - 12' Hit Refusal

BORING/WELL CONSTRUCTION LOG

Page 1 of 1

Boring/Well No. SB-5		Total Depth 12'	Location Noble Energy, Inc. Beeler 22-12, 13 NWNE Sec 22, T4N, R67W, 6th PM Weld County, Colorado	
Project No./Name C022-013 Noble Beeler 22-12, 13			Approved By	
Drilling Contractor/Driller DrillPro/Terrence, Hayward				
Geologist/Office Ethan Black/Fremont Environmental, Inc.				
Drilling Equipment/Method Geoprobe		Size/Type of Bit 2.5" direct push	Sampling Method direct push	Start/Finish Date 05/03/2022
Well Installed? Yes <input type="checkbox"/> No <input checked="" type="checkbox"/>		Casing Mtrl./Dia. .	Screen: Type . Mtrl. . Length 10' Dia. 2" Slot Size .	
Elevation of: (ft. above datum)		Ground Surface .	Top of Well Casing .	Top of Screen .
		Bottom of Screen .	Ground Water Surface/Date Measured .	

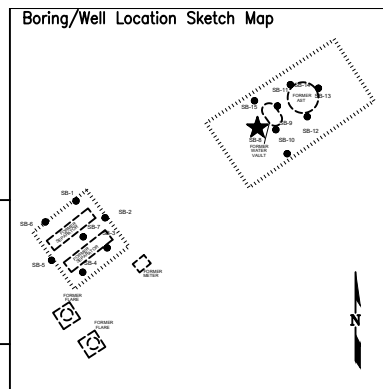


DEPTH (feet)	WELL CONSTRUCTION				LITHOLOGY		Penetration Rate (blows/6")	Recovery (%)	Sample Interval (feet)	PID Values (ppm)
					GRAPHIC LOG	VISUAL DESCRIPTION				
5					CH	Clay: brown, plastic, moist				0.0
										0.0
										0.0
						- color change to tan				0.0
										0.0
10					SP	Sand: tan, fine, moist				0.0
										0.0
						- 6" clay lens				0.0
										0.0
										0.0
15						- 4" clay lens				0.0
										0.0
										0.0
										0.0
										0.0
20						TD - 12' Hit Refusal				0.0

DEPTH (feet)	WELL CONSTRUCTION				LITHOLOGY		Penetration Rate (blows/6")	Recovery (%)	Sample Interval (feet)	PID Values (ppm)
					GRAPHIC LOG	VISUAL DESCRIPTION				
5					<div>CH</div>	Clay: brown, plastic, moist				0.0
										0.0
										0.0
						- calcareous				0.0
										0.0
10					<div>SP</div>	Sand: tan, fine, slightly moist				0.0
										0.0
										0.0
						- oxidized				0.0
										0.0
15						TD - 12' Hit Refusal				0.0
20										



Boring/Well No. SB-8		Total Depth 10'		Location Noble Energy, Inc. Beeler 22-12, 13 NWNE Sec 22, T4N, R67W, 6th PM Weld County, Colorado					
Project No./Name C022-013 Noble Beeler 22-12, 13				Approved By 					
Drilling Contractor/Driller DrillPro/Terrence, Hayword									
Geologist/Office Ethan Black/Fremont Environmental, Inc.									
Drilling Equipment/Method Geoprobe				Size/Type of Bit 2.5" direct push		Sampling Method direct push		Start/Finish Date 05/03/2022	
Well Installed?		Casing Mtrl./Dia.		Screen:					
Yes <input type="checkbox"/> No <input checked="" type="checkbox"/>				Type					
				Mtrl.		Length 10'		Dia. 2"	
Elevation of:		Ground Surface		Top of Well Casing		Top of Screen		Bottom of Screen	
(ft. above datum)								Ground Water Surface/Date Measured	


[illegible]



The sketch map shows the layout of the site with various boring locations marked. A dashed line indicates the site boundary. A large star symbol is located near the center of the site. The boring locations are labeled as follows:


- SD-1 (top right)
- SD-2 (top right)
- SD-3 (top right)
- SD-4 (top right)
- SD-5 (top right)
- SD-6 (top right)
- SD-7 (top right)
- SD-8 (top right)
- SD-9 (top right)
- SD-10 (top right)
- SD-11 (top right)
- SD-12 (top right)

A north arrow is located in the bottom right corner of the map.

Boring/Well No. SB-9	Total Depth 10'	Location Noble Energy, Inc. Beeler 22-12, 13 NWNE Sec 22, T4N, R67W, 6th PM Weld County, Colorado								
Project No./Name C022-013 Noble Beeler 22-12, 13										
Drilling Contractor/Driller DrillPro/Terrence, Hayword										
Geologist/Office Ethan Black/Fremont Environmental, Inc.		Approved By _____								
Drilling Equipment/Method Geoprobe		Size/Type of Bit 2.5" direct push			Sampling Method direct push			Start/Finish Date 05/03/2022		
Well Installed? Yes <input type="checkbox"/> No <input checked="" type="checkbox"/>		Casing Mtrl./Dia. _____ .		Screen: Type _____ Mtrl. _____ Length 10' Dia. 2" Slot Size _____		Elevation of: (ft. above datum)				
		Ground Surface Top of Well Casing		Top of Screen Bottom of Screen		Ground Water Surface/Date Measured				



[illegible]

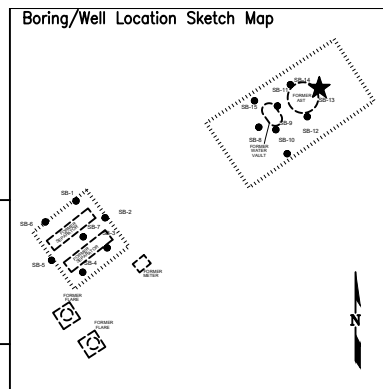
[illegible]

Boring/Well No. SB-11	Total Depth 9'	Location Noble Energy, Inc. Beeler 22-12, 13 NWNE Sec 22, T4N, R67W, 6th PM Weld County, Colorado							
Project No./Name C022-013 Noble Beeler 22-12, 13									
Drilling Contractor/Driller DrillPro/Terrence, Hayword									
Geologist/Office Ethan Black/Fremont Environmental, Inc.		Approved By							
Drilling Equipment/Method Geoprobe				Size/Type of Bit 2.5" direct push		Sampling Method direct push		Start/Finish Date 05/03/2022	
Well Installed? Yes <input type="checkbox"/> No <input checked="" type="checkbox"/>		Casing Mtrl./Dia.		Screen: Type		Mtrl.	Length 10'	Dia. 2"	Slot Size
Elevation of: (ft. above datum)		Ground Surface	Top of Well Casing	Top of Screen	Bottom of Screen	Ground Water Surface/Date Measured			

[illegible]

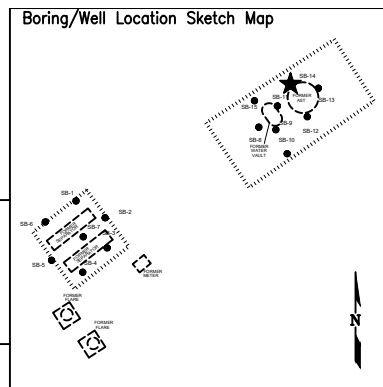


Boring/Well No. SB-13		Total Depth 10'		Location Noble Energy, Inc. Beeler 22-12, 13 NWNE Sec 22, T4N, R67W, 6th PM Weld County, Colorado									
Project No./Name C022-013 Noble Beeler 22-12, 13				Approved By 									
Drilling Contractor/Driller DrillPro/Terrence, Hayword													
Geologist/Office Ethan Black/Fremont Environmental, Inc.													
Drilling Equipment/Method Geoprobe				Size/Type of Bit 2.5" direct push		Sampling Method direct push		Start/Finish Date 05/03/2022					
Well Installed? Yes <input type="checkbox"/> No <input checked="" type="checkbox"/>		Casing Mtrl./Dia.		Screen: Type		Mtrl.		Length 10'		Dia. 2"		Slot Size	
Elevation of: (ft. above datum)		Ground Surface		Top of Well		Casing		Top of Screen		Bottom of Screen		Ground Water Surface/Date Measured	

[illegible]



Boring/Well No. SB-14		Total Depth 6'		Location Noble Energy, Inc. Beeler 22-12, 13 NWNE Sec 22, T4N, R67W, 6th PM Weld County, Colorado					
Project No./Name C022-013 Noble Beeler 22-12, 13				Approved By 					
Drilling Contractor/Driller DrillPro/Terrence, Hayword									
Geologist/Office Ethan Black/Fremont Environmental, Inc.									
Drilling Equipment/Method Geoprobe				Size/Type of Bit 2.5" direct push		Sampling Method direct push		Start/Finish Date 05/03/2022	
Well Installed?		Casing Mtrl./Dia.		Screen:					
Yes <input type="checkbox"/> No <input checked="" type="checkbox"/>				Type					
				Mtrl.		Length 10'		Dia. 2"	
				Top of Screen		Bottom of Screen		Slot Size	
Elevation of: (ft. above datum)		Ground Surface		Top of Well Casing		Bottom of Screen		Ground Water Surface/Date Measured	

[illegible]

DEPTH (feet)	WELL CONSTRUCTION				LITHOLOGY		Penetration Rate (blows/6")	Recovery (%)	Sample Interval (feet)	PID Values (ppm)
					GRAPHIC LOG	VISUAL DESCRIPTION				
5					<div>CH</div> <div>Clay: brown, plastic, moist, calcareous</div> <div>- calcareous, oxidized</div> <div>SP</div> <div>Sand: tan, fine, slightly moist</div>					
10										
15										
20										

APPENDIX B

LABORATORY DOCUMENTATION

Summit Scientific

4653 Table Mountain Drive, Golden, Colorado 80403

303.277.9310

May 11, 2022

Paul Henchan

Fremont Environmental

PO Box 1289

Wellington, CO 80549

RE: Noble - Beeler 22-12, 13

Work Order #2205049

Enclosed are the results of analyses for samples received by Summit Scientific on 05/04/22 15:00. If you have any questions concerning this report, please feel free to contact me.

Sincerely,

A handwritten signature in black ink, appearing to read 'P. Shrewsbury', with a stylized, cursive script.

Paul Shrewsbury

President



Fremont Environmental
PO Box 1289
Wellington CO, 80549

Project: Noble - Beeler 22-12, 13

Project Number: [none]
Project Manager: Paul Henchan

Reported:
05/11/22 13:41

ANALYTICAL REPORT FOR SAMPLES

Sample ID	Laboratory ID	Matrix	Date Sampled	Date Received
SB-1 13ft	2205049-01	Soil	05/03/22 00:00	05/04/22 15:00
SB-2 12ft	2205049-02	Soil	05/03/22 00:00	05/04/22 15:00
SB-3 12ft	2205049-03	Soil	05/03/22 00:00	05/04/22 15:00
SB-4 12ft	2205049-04	Soil	05/03/22 00:00	05/04/22 15:00
SB-5 12ft	2205049-05	Soil	05/03/22 00:00	05/04/22 15:00
SB-6 12ft	2205049-06	Soil	05/03/22 00:00	05/04/22 15:00
SB-7 12ft	2205049-07	Soil	05/03/22 00:00	05/04/22 15:00
SB-8 10ft	2205049-08	Soil	05/03/22 00:00	05/04/22 15:00
SB-9 7ft	2205049-09	Soil	05/03/22 00:00	05/04/22 15:00
SB-10 11ft	2205049-10	Soil	05/03/22 00:00	05/04/22 15:00
SB-11 6ft	2205049-11	Soil	05/03/22 00:00	05/04/22 15:00
SB-12 6ft	2205049-12	Soil	05/03/22 00:00	05/04/22 15:00
SB-13 10ft	2205049-13	Soil	05/03/22 00:00	05/04/22 15:00
SB-14 6ft	2205049-14	Soil	05/03/22 00:00	05/04/22 15:00
SB-15 10ft	2205049-15	Soil	05/03/22 00:00	05/04/22 15:00

Summit Scientific

The results in this report apply to the samples analyzed in accordance with the chain of custody document. This analytical report must be reproduced in its entirety.

Summit Scientific

S₂

4653 Table Mountain Drive ♦ Golden, Colorado 80403
303-277-9310 ♦ 303-374-5933 (f)

Page 1 of 2

Client: Fremont Environmental

Project Manager: Paul Henehan

Address: P.O Box 1289

E-Mail: paulh@fremontenv.com, ethanb@fremontenv.com

City/State/Zip: Wellington, CO 80549

Bill to: Jacob

Phone: 303-956-8714

Project Name: Noble - Beeler 22-12, 13

Sampler Name: Black

Project Number:

ID	Sample Description	Date Sampled	Time Sampled	# of containers	Preservative				Matrix			Analysis Requested										Notes:	
					HCl	HNO ₃	None	Other	Water	Soil	Air-Canister #	Other	GBTEXN-915	GBTEXN-915	GRO	DRO/ORO	SAR	EC	pH	Boron	PAH-915		
1	SB-1 13FT	5/3/22		3			X			X			X	X		X	X	X	X	X	X	X	Canal SAR, EC, pH & Isomell samples
2	SB-2 12FT																						
3	SB-3 12FT																						
4	SB-4 12FT																						
5	SB-5 12FT																						
6	SB-6 12FT																						
7	SB-7 12FT																						
8	SB-8 10FT																						
9	SB-9 7FT																						
10	SB-10 11FT																						

Relinquished by:	Date/Time:	Received by:	Date/Time:	Turn Around Time (Check) Same Day _____ 72 hours _____ 24 hours _____ <input checked="" type="checkbox"/> Standard _____ 48 hours _____ Sample Integrity: Temperature Upon Receipt: 6.2 Samples Intact: <input checked="" type="checkbox"/> Yes No
Relinquished by:	Date/Time:	Received by:	Date/Time:	
Relinquished by:	Date/Time:	Received by:	Date/Time:	

Summit Scientific

S₂

2205049.2

4653 Table Mountain Drive ♦ Golden, Colorado 80403
303-277-9310 ♦ 303-374-5933 (f)

Page 2 of 2

Client: Fremont Environmental

Project Manager: Paul Henehan

Address: P.O Box 1289

E-Mail: paulh@fremontenv.com, ethanb@fremontenv.com

City/State/Zip: Wellington, CO 80549

Bill to: Jacob

Phone: 303-956-8714

Project Name: Noble - Paer 22-12, 13

Sampler Name: Black

Project Number:

ID	Sample Description	Date Sampled	Time Sampled	# of containers	Preservative				Matrix				Analysis Requested										Notes:
					HCl	HNO ₃	None	Other	Water	Soil	Air-Canister #	Other	GBTEXN-915	TWGS	GRO	DRO/ORO	SAR	EC	pH	Boron	PAH-915		
1	SB-11 6FT	5/3/22		3			X			X				X	X		X	X	X	X	X	X	Cancel SAR etc. H.B. from all samples
2	SB-12 6FT																						
3	SB-13 10FT																						
4	SB-14 6FT																						
5	SB-15 10FT																						
6																							
7																							
8																							
9																							
10																							

Relinquished by:	Date/Time:	Received by:	Date/Time:	Turn Around Time (Check) Same Day _____ 72 hours _____ 24 hours _____ Standard _____ 48 hours _____ Sample Integrity: Temperature Upon Receipt: _____ _____ Samples Intact: (Yes) No
Relinquished by:	Date/Time:	Received by:	Date/Time:	
Relinquished by:	Date/Time:	Received by:	Date/Time:	

S₂

2/2

Sample Receipt Checklist

S2 Work Order# 2205049

Client: FremontClient Project ID: Noble-Becker 22-12,13

Shipped Via: H.D./P.U./FedEx/UPS/USPS/Other

Airbill #:

	-			
--	---	--	--	--

Matrix (Check all that apply)

Air

☐

Soil/Solid

☒

Water

☐

Other

☐

Temp (°C)

6.2

Thermometer #

1

	Yes	No	N/A	Comments (if any)
If samples require cooling, is the temperature < 6 °C ⁽¹⁾ ? NOTE: If samples are delivered the same day of sampling, this requirement is met if there is evidence that cooling has begun.	-			on ICE
Were all samples received intact ⁽¹⁾ ?	-			
Was adequate sample volume provided ⁽¹⁾ ?	-			
If custody seals are present, are they intact ⁽¹⁾ ?	-			
Are samples due within 48 hours present?		-		
Are water samples with short hold times present? Note the short hold analysis in the comments column - pH, Nitrate/Nitrite, Ferrous Iron (Fe ²⁺), Hexavalent Chromium (Cr ⁶⁺ , Cr VI), COD/BOD, Total Coliform, E. Coli, Total Residual Chlorine (TRC), Dissolved Oxygen			-	
Is a chain-of-custody (COC) form present and filled out completely ⁽¹⁾ ?	-			
Does the COC agree with the number and type of sample bottles received ⁽¹⁾ ?	-			
Do the sample IDs on the bottle labels match the COC ⁽¹⁾ ?	-			
Is the COC properly relinquished by the client w/ date and time recorded ⁽¹⁾ ?	-			
For volatiles in water – is there headspace present? If yes, contact client and note in narrative.			-	
Are samples preserved that require preservation (excluding cooling) ⁽¹⁾ ? Note the type of preservative in the comments column – HCl, H ₂ SO ₄ , NaOH, HNO ₃ , etc.			-	
If samples are acid preserved for metals, is the pH ≤ 2 ⁽¹⁾ ? Record the pH in Comments.			-	
If dissolved metals are requested, were samples field filtered?			-	
Additional Comments (if any):				

⁽¹⁾ If NO, then contact the client before proceeding with analysis and note in case narrative.

Custodian Printed Name

5422

Date/Time



Fremont Environmental
PO Box 1289
Wellington CO, 80549

Project: Noble - Beeler 22-12, 13

Project Number: [none]
Project Manager: Paul Henchan

Reported:
05/11/22 13:41

SB-1 13ft
2205049-01 (Soil)

Summit Scientific

Volatile Organic Compounds by EPA Method 8260B

Date Sampled: **05/03/22 00:00**

Analyte	Result	Reporting Limit	Units	Dilution	Batch	Prepared	Analyzed	Method	Notes
Benzene	ND	0.0020	mg/kg	1	BFE0085	05/05/22	05/05/22	EPA 8260B	
Toluene	ND	0.0050	"	"	"	"	"	"	
Ethylbenzene	ND	0.0050	"	"	"	"	"	"	
Xylenes (total)	ND	0.010	"	"	"	"	"	"	
1,2,4-Trimethylbenzene	ND	0.0050	"	"	"	"	"	"	
1,3,5-Trimethylbenzene	ND	0.0050	"	"	"	"	"	"	
Naphthalene	ND	0.0038	"	"	"	"	"	"	
Gasoline Range Hydrocarbons	ND	0.50	"	"	"	"	"	"	

Date Sampled: **05/03/22 00:00**

Analyte	Result	Reporting Limit	Units	Dilution	Batch	Prepared	Analyzed	Method	Notes
Surrogate: 1,2-Dichloroethane-d4	0.0360	90.0 %	50-150		"	"	"	"	
Surrogate: Toluene-d8	0.0370	92.6 %	50-150		"	"	"	"	
Surrogate: 4-Bromofluorobenzene	0.0373	93.3 %	50-150		"	"	"	"	

Extractable Petroleum Hydrocarbons by 8015

Date Sampled: **05/03/22 00:00**

Analyte	Result	Reporting Limit	Units	Dilution	Batch	Prepared	Analyzed	Method	Notes
C10-C28 (DRO)	ND	50	mg/kg	1	BFE0087	05/05/22	05/06/22	EPA 8015M	
C28-C36 (ORO)	ND	50	"	"	"	"	"	"	

Date Sampled: **05/03/22 00:00**

Analyte	Result	Reporting Limit	Units	Dilution	Batch	Prepared	Analyzed	Method	Notes
Surrogate: o-Terphenyl	11.7	93.4 %	30-150		"	"	"	"	

PAH by EPA Method 8270D SIM

Summit Scientific

The results in this report apply to the samples analyzed in accordance with the chain of custody document. This analytical report must be reproduced in its entirety.



Fremont Environmental
PO Box 1289
Wellington CO, 80549

Project: Noble - Beeler 22-12, 13

Project Number: [none]
Project Manager: Paul Henchan

Reported:
05/11/22 13:41

SB-1 13ft
2205049-01 (Soil)

Summit Scientific

PAH by EPA Method 8270D SIM

Date Sampled: **05/03/22 00:00**

Analyte	Result	Reporting	Units	Dilution	Batch	Prepared	Analyzed	Method	Notes
		Limit							
Acenaphthene	ND	0.00500	mg/kg	1	BFE0089	05/05/22	05/06/22	EPA 8270D SIM	
Anthracene	ND	0.00500	"	"	"	"	"	"	
Benzo (a) anthracene	ND	0.00500	"	"	"	"	"	"	
Benzo (a) pyrene	ND	0.00500	"	"	"	"	"	"	
Benzo (b) fluoranthene	ND	0.00500	"	"	"	"	"	"	
Benzo (k) fluoranthene	ND	0.00500	"	"	"	"	"	"	
Chrysene	ND	0.00500	"	"	"	"	"	"	
Dibenz (a,h) anthracene	ND	0.00500	"	"	"	"	"	"	
Fluoranthene	ND	0.00500	"	"	"	"	"	"	
Fluorene	ND	0.00500	"	"	"	"	"	"	
Indeno (1,2,3-cd) pyrene	ND	0.00500	"	"	"	"	"	"	
Pyrene	ND	0.00500	"	"	"	"	"	"	
1-Methylnaphthalene	ND	0.00500	"	"	"	"	"	"	
2-Methylnaphthalene	ND	0.00500	"	"	"	"	"	"	

Date Sampled: **05/03/22 00:00**

Analyte	Result	Reporting	Units	Dilution	Batch	Prepared	Analyzed	Method	Notes
		Limit							
Surrogate: 2-Methylnaphthalene-d10	0.0239	71.8 %	40-150		"	"	"	"	
Surrogate: Fluoranthene-d10	0.0221	66.3 %	40-150		"	"	"	"	

Summit Scientific

The results in this report apply to the samples analyzed in accordance with the chain of custody document. This analytical report must be reproduced in its entirety.



Fremont Environmental
PO Box 1289
Wellington CO, 80549

Project: Noble - Beeler 22-12, 13

Project Number: [none]
Project Manager: Paul Henchan

Reported:
05/11/22 13:41

SB-2 12ft
2205049-02 (Soil)

Summit Scientific

Volatile Organic Compounds by EPA Method 8260B

Date Sampled: **05/03/22 00:00**

Analyte	Result	Reporting	Units	Dilution	Batch	Prepared	Analyzed	Method	Notes
		Limit							
Benzene	ND	0.0020	mg/kg	1	BFE0085	05/05/22	05/05/22	EPA 8260B	
Toluene	ND	0.0050	"	"	"	"	"	"	
Ethylbenzene	ND	0.0050	"	"	"	"	"	"	
Xylenes (total)	ND	0.010	"	"	"	"	"	"	
1,2,4-Trimethylbenzene	ND	0.0050	"	"	"	"	"	"	
1,3,5-Trimethylbenzene	ND	0.0050	"	"	"	"	"	"	
Naphthalene	ND	0.0038	"	"	"	"	"	"	
Gasoline Range Hydrocarbons	ND	0.50	"	"	"	"	"	"	

Date Sampled: **05/03/22 00:00**

Analyte	Result	Reporting	Units	Dilution	Batch	Prepared	Analyzed	Method	Notes
		Limit							
Surrogate: 1,2-Dichloroethane-d4	0.0374	93.5 %	50-150		"	"	"	"	
Surrogate: Toluene-d8	0.0378	94.5 %	50-150		"	"	"	"	
Surrogate: 4-Bromofluorobenzene	0.0371	92.7 %	50-150		"	"	"	"	

Extractable Petroleum Hydrocarbons by 8015

Date Sampled: **05/03/22 00:00**

Analyte	Result	Reporting	Units	Dilution	Batch	Prepared	Analyzed	Method	Notes
		Limit							
C10-C28 (DRO)	ND	50	mg/kg	1	BFE0087	05/05/22	05/06/22	EPA 8015M	
C28-C36 (ORO)	ND	50	"	"	"	"	"	"	

Date Sampled: **05/03/22 00:00**

Analyte	Result	Reporting	Units	Dilution	Batch	Prepared	Analyzed	Method	Notes
		Limit							
Surrogate: o-Terphenyl	11.5	91.9 %	30-150		"	"	"	"	

PAH by EPA Method 8270D SIM

Summit Scientific

The results in this report apply to the samples analyzed in accordance with the chain of custody document. This analytical report must be reproduced in its entirety.



Fremont Environmental
PO Box 1289
Wellington CO, 80549

Project: Noble - Beeler 22-12, 13

Project Number: [none]
Project Manager: Paul Henchan

Reported:
05/11/22 13:41

SB-2 12ft
2205049-02 (Soil)

Summit Scientific

PAH by EPA Method 8270D SIM

Date Sampled: **05/03/22 00:00**

Analyte	Result	Reporting	Units	Dilution	Batch	Prepared	Analyzed	Method	Notes
		Limit							
Acenaphthene	ND	0.00500	mg/kg	1	BFE0089	05/05/22	05/06/22	EPA 8270D SIM	
Anthracene	ND	0.00500	"	"	"	"	"	"	
Benzo (a) anthracene	ND	0.00500	"	"	"	"	"	"	
Benzo (a) pyrene	ND	0.00500	"	"	"	"	"	"	
Benzo (b) fluoranthene	ND	0.00500	"	"	"	"	"	"	
Benzo (k) fluoranthene	ND	0.00500	"	"	"	"	"	"	
Chrysene	ND	0.00500	"	"	"	"	"	"	
Dibenz (a,h) anthracene	ND	0.00500	"	"	"	"	"	"	
Fluoranthene	ND	0.00500	"	"	"	"	"	"	
Fluorene	ND	0.00500	"	"	"	"	"	"	
Indeno (1,2,3-cd) pyrene	ND	0.00500	"	"	"	"	"	"	
Pyrene	ND	0.00500	"	"	"	"	"	"	
1-Methylnaphthalene	ND	0.00500	"	"	"	"	"	"	
2-Methylnaphthalene	ND	0.00500	"	"	"	"	"	"	

Date Sampled: **05/03/22 00:00**

Analyte	Result	Reporting	Units	Dilution	Batch	Prepared	Analyzed	Method	Notes
		Limit							
Surrogate: 2-Methylnaphthalene-d10	0.0258	77.3 %	40-150		"	"	"	"	
Surrogate: Fluoranthene-d10	0.0223	66.8 %	40-150		"	"	"	"	

Summit Scientific

The results in this report apply to the samples analyzed in accordance with the chain of custody document. This analytical report must be reproduced in its entirety.



Fremont Environmental
PO Box 1289
Wellington CO, 80549

Project: Noble - Beeler 22-12, 13

Project Number: [none]
Project Manager: Paul Henchan

Reported:
05/11/22 13:41

SB-3 12ft
2205049-03 (Soil)

Summit Scientific

Volatile Organic Compounds by EPA Method 8260B

Date Sampled: **05/03/22 00:00**

Analyte	Result	Reporting	Units	Dilution	Batch	Prepared	Analyzed	Method	Notes
		Limit							
Benzene	ND	0.0020	mg/kg	1	BFE0085	05/05/22	05/05/22	EPA 8260B	
Toluene	ND	0.0050	"	"	"	"	"	"	
Ethylbenzene	ND	0.0050	"	"	"	"	"	"	
Xylenes (total)	ND	0.010	"	"	"	"	"	"	
1,2,4-Trimethylbenzene	ND	0.0050	"	"	"	"	"	"	
1,3,5-Trimethylbenzene	ND	0.0050	"	"	"	"	"	"	
Naphthalene	ND	0.0038	"	"	"	"	"	"	
Gasoline Range Hydrocarbons	ND	0.50	"	"	"	"	"	"	

Date Sampled: **05/03/22 00:00**

Analyte	Result	Reporting	Units	Dilution	Batch	Prepared	Analyzed	Method	Notes
		Limit							
Surrogate: 1,2-Dichloroethane-d4	0.0372	93.0 %	50-150		"	"	"	"	
Surrogate: Toluene-d8	0.0387	96.8 %	50-150		"	"	"	"	
Surrogate: 4-Bromofluorobenzene	0.0369	92.2 %	50-150		"	"	"	"	

Extractable Petroleum Hydrocarbons by 8015

Date Sampled: **05/03/22 00:00**

Analyte	Result	Reporting	Units	Dilution	Batch	Prepared	Analyzed	Method	Notes
		Limit							
C10-C28 (DRO)	ND	50	mg/kg	1	BFE0087	05/05/22	05/06/22	EPA 8015M	
C28-C36 (ORO)	ND	50	"	"	"	"	"	"	

Date Sampled: **05/03/22 00:00**

Analyte	Result	Reporting	Units	Dilution	Batch	Prepared	Analyzed	Method	Notes
		Limit							
Surrogate: o-Terphenyl	11.5	91.8 %	30-150		"	"	"	"	

PAH by EPA Method 8270D SIM

Summit Scientific

The results in this report apply to the samples analyzed in accordance with the chain of custody document. This analytical report must be reproduced in its entirety.



Fremont Environmental
PO Box 1289
Wellington CO, 80549

Project: Noble - Beeler 22-12, 13

Project Number: [none]
Project Manager: Paul Henchan

Reported:
05/11/22 13:41

SB-3 12ft
2205049-03 (Soil)

Summit Scientific

PAH by EPA Method 8270D SIM

Date Sampled: **05/03/22 00:00**

Analyte	Result	Reporting	Units	Dilution	Batch	Prepared	Analyzed	Method	Notes
		Limit							
Acenaphthene	ND	0.00500	mg/kg	1	BFE0089	05/05/22	05/06/22	EPA 8270D SIM	
Anthracene	ND	0.00500	"	"	"	"	"	"	
Benzo (a) anthracene	ND	0.00500	"	"	"	"	"	"	
Benzo (a) pyrene	ND	0.00500	"	"	"	"	"	"	
Benzo (b) fluoranthene	ND	0.00500	"	"	"	"	"	"	
Benzo (k) fluoranthene	ND	0.00500	"	"	"	"	"	"	
Chrysene	ND	0.00500	"	"	"	"	"	"	
Dibenz (a,h) anthracene	ND	0.00500	"	"	"	"	"	"	
Fluoranthene	ND	0.00500	"	"	"	"	"	"	
Fluorene	ND	0.00500	"	"	"	"	"	"	
Indeno (1,2,3-cd) pyrene	ND	0.00500	"	"	"	"	"	"	
Pyrene	ND	0.00500	"	"	"	"	"	"	
1-Methylnaphthalene	ND	0.00500	"	"	"	"	"	"	
2-Methylnaphthalene	ND	0.00500	"	"	"	"	"	"	

Date Sampled: **05/03/22 00:00**

Analyte	Result	Reporting	Units	Dilution	Batch	Prepared	Analyzed	Method	Notes
		Limit							
Surrogate: 2-Methylnaphthalene-d10	0.0137	41.0 %	40-150		"	"	"	"	
Surrogate: Fluoranthene-d10	0.0136	40.8 %	40-150		"	"	"	"	

Summit Scientific

The results in this report apply to the samples analyzed in accordance with the chain of custody document. This analytical report must be reproduced in its entirety.



Fremont Environmental
PO Box 1289
Wellington CO, 80549

Project: Noble - Beeler 22-12, 13

Project Number: [none]
Project Manager: Paul Henehan

Reported:
05/11/22 13:41

SB-4 12ft
2205049-04 (Soil)

Summit Scientific

Volatile Organic Compounds by EPA Method 8260B

Date Sampled: **05/03/22 00:00**

Analyte	Result	Reporting	Units	Dilution	Batch	Prepared	Analyzed	Method	Notes
		Limit							
Benzene	ND	0.0020	mg/kg	1	BFE0085	05/05/22	05/05/22	EPA 8260B	
Toluene	ND	0.0050	"	"	"	"	"	"	
Ethylbenzene	ND	0.0050	"	"	"	"	"	"	
Xylenes (total)	ND	0.010	"	"	"	"	"	"	
1,2,4-Trimethylbenzene	ND	0.0050	"	"	"	"	"	"	
1,3,5-Trimethylbenzene	ND	0.0050	"	"	"	"	"	"	
Naphthalene	ND	0.0038	"	"	"	"	"	"	
Gasoline Range Hydrocarbons	ND	0.50	"	"	"	"	"	"	

Date Sampled: **05/03/22 00:00**

Analyte	Result	Reporting	Units	Dilution	Batch	Prepared	Analyzed	Method	Notes
		Limit							
Surrogate: 1,2-Dichloroethane-d4	0.0362	90.4 %	50-150		"	"	"	"	
Surrogate: Toluene-d8	0.0381	95.2 %	50-150		"	"	"	"	
Surrogate: 4-Bromofluorobenzene	0.0369	92.2 %	50-150		"	"	"	"	

Extractable Petroleum Hydrocarbons by 8015

Date Sampled: **05/03/22 00:00**

Analyte	Result	Reporting	Units	Dilution	Batch	Prepared	Analyzed	Method	Notes
		Limit							
C10-C28 (DRO)	ND	50	mg/kg	1	BFE0087	05/05/22	05/06/22	EPA 8015M	
C28-C36 (ORO)	ND	50	"	"	"	"	"	"	

Date Sampled: **05/03/22 00:00**

Analyte	Result	Reporting	Units	Dilution	Batch	Prepared	Analyzed	Method	Notes
		Limit							
Surrogate: o-Terphenyl	11.7	93.8 %	30-150		"	"	"	"	

PAH by EPA Method 8270D SIM

Summit Scientific

The results in this report apply to the samples analyzed in accordance with the chain of custody document. This analytical report must be reproduced in its entirety.



Fremont Environmental
PO Box 1289
Wellington CO, 80549

Project: Noble - Beeler 22-12, 13

Project Number: [none]
Project Manager: Paul Henchan

Reported:
05/11/22 13:41

SB-4 12ft
2205049-04 (Soil)

Summit Scientific

PAH by EPA Method 8270D SIM

Date Sampled: **05/03/22 00:00**

Analyte	Result	Reporting	Units	Dilution	Batch	Prepared	Analyzed	Method	Notes
		Limit							
Acenaphthene	ND	0.00500	mg/kg	1	BFE0089	05/05/22	05/06/22	EPA 8270D SIM	
Anthracene	ND	0.00500	"	"	"	"	"	"	
Benzo (a) anthracene	ND	0.00500	"	"	"	"	"	"	
Benzo (a) pyrene	ND	0.00500	"	"	"	"	"	"	
Benzo (b) fluoranthene	ND	0.00500	"	"	"	"	"	"	
Benzo (k) fluoranthene	ND	0.00500	"	"	"	"	"	"	
Chrysene	ND	0.00500	"	"	"	"	"	"	
Dibenz (a,h) anthracene	ND	0.00500	"	"	"	"	"	"	
Fluoranthene	ND	0.00500	"	"	"	"	"	"	
Fluorene	ND	0.00500	"	"	"	"	"	"	
Indeno (1,2,3-cd) pyrene	ND	0.00500	"	"	"	"	"	"	
Pyrene	ND	0.00500	"	"	"	"	"	"	
1-Methylnaphthalene	ND	0.00500	"	"	"	"	"	"	
2-Methylnaphthalene	ND	0.00500	"	"	"	"	"	"	

Date Sampled: **05/03/22 00:00**

Analyte	Result	Reporting	Units	Dilution	Batch	Prepared	Analyzed	Method	Notes
		Limit							
Surrogate: 2-Methylnaphthalene-d10	0.0166	49.7 %	40-150		"	"	"	"	
Surrogate: Fluoranthene-d10	0.0137	41.2 %	40-150		"	"	"	"	

Summit Scientific

The results in this report apply to the samples analyzed in accordance with the chain of custody document. This analytical report must be reproduced in its entirety.



Fremont Environmental
PO Box 1289
Wellington CO, 80549

Project: Noble - Beeler 22-12, 13

Project Number: [none]
Project Manager: Paul Henchan

Reported:
05/11/22 13:41

SB-5 12ft
2205049-05 (Soil)

Summit Scientific

Volatile Organic Compounds by EPA Method 8260B

Date Sampled: **05/03/22 00:00**

Analyte	Result	Reporting	Units	Dilution	Batch	Prepared	Analyzed	Method	Notes
		Limit							
Benzene	ND	0.0020	mg/kg	1	BFE0085	05/05/22	05/05/22	EPA 8260B	
Toluene	ND	0.0050	"	"	"	"	"	"	
Ethylbenzene	ND	0.0050	"	"	"	"	"	"	
Xylenes (total)	ND	0.010	"	"	"	"	"	"	
1,2,4-Trimethylbenzene	ND	0.0050	"	"	"	"	"	"	
1,3,5-Trimethylbenzene	ND	0.0050	"	"	"	"	"	"	
Naphthalene	ND	0.0038	"	"	"	"	"	"	
Gasoline Range Hydrocarbons	ND	0.50	"	"	"	"	"	"	

Date Sampled: **05/03/22 00:00**

Analyte	Result	Reporting	Units	Dilution	Batch	Prepared	Analyzed	Method	Notes
		Limit							
Surrogate: 1,2-Dichloroethane-d4	0.0364	90.9 %	50-150		"	"	"	"	
Surrogate: Toluene-d8	0.0390	97.6 %	50-150		"	"	"	"	
Surrogate: 4-Bromofluorobenzene	0.0361	90.2 %	50-150		"	"	"	"	

Extractable Petroleum Hydrocarbons by 8015

Date Sampled: **05/03/22 00:00**

Analyte	Result	Reporting	Units	Dilution	Batch	Prepared	Analyzed	Method	Notes
		Limit							
C10-C28 (DRO)	ND	50	mg/kg	1	BFE0087	05/05/22	05/06/22	EPA 8015M	
C28-C36 (ORO)	ND	50	"	"	"	"	"	"	

Date Sampled: **05/03/22 00:00**

Analyte	Result	Reporting	Units	Dilution	Batch	Prepared	Analyzed	Method	Notes
		Limit							
Surrogate: o-Terphenyl	12.0	95.8 %	30-150		"	"	"	"	

PAH by EPA Method 8270D SIM

Summit Scientific

The results in this report apply to the samples analyzed in accordance with the chain of custody document. This analytical report must be reproduced in its entirety.



Fremont Environmental
PO Box 1289
Wellington CO, 80549

Project: Noble - Beeler 22-12, 13

Project Number: [none]
Project Manager: Paul Henchan

Reported:
05/11/22 13:41

SB-5 12ft
2205049-05 (Soil)

Summit Scientific

PAH by EPA Method 8270D SIM

Date Sampled: **05/03/22 00:00**

Analyte	Result	Reporting	Units	Dilution	Batch	Prepared	Analyzed	Method	Notes
		Limit							
Acenaphthene	ND	0.00500	mg/kg	1	BFE0089	05/05/22	05/10/22	EPA 8270D SIM	
Anthracene	ND	0.00500	"	"	"	"	"	"	
Benzo (a) anthracene	ND	0.00500	"	"	"	"	"	"	
Benzo (a) pyrene	ND	0.00500	"	"	"	"	"	"	
Benzo (b) fluoranthene	ND	0.00500	"	"	"	"	"	"	
Benzo (k) fluoranthene	ND	0.00500	"	"	"	"	"	"	
Chrysene	ND	0.00500	"	"	"	"	"	"	
Dibenz (a,h) anthracene	ND	0.00500	"	"	"	"	"	"	
Fluoranthene	ND	0.00500	"	"	"	"	"	"	
Fluorene	ND	0.00500	"	"	"	"	"	"	
Indeno (1,2,3-cd) pyrene	ND	0.00500	"	"	"	"	"	"	
Pyrene	ND	0.00500	"	"	"	"	"	"	
1-Methylnaphthalene	ND	0.00500	"	"	"	"	"	"	
2-Methylnaphthalene	ND	0.00500	"	"	"	"	"	"	

Date Sampled: **05/03/22 00:00**

Analyte	Result	Reporting	Units	Dilution	Batch	Prepared	Analyzed	Method	Notes
		Limit							
Surrogate: 2-Methylnaphthalene-d10	0.0249	74.6 %	40-150		"	"	"	"	
Surrogate: Fluoranthene-d10	0.0267	80.0 %	40-150		"	"	"	"	

Summit Scientific

The results in this report apply to the samples analyzed in accordance with the chain of custody document. This analytical report must be reproduced in its entirety.



Fremont Environmental
PO Box 1289
Wellington CO, 80549

Project: Noble - Beeler 22-12, 13

Project Number: [none]
Project Manager: Paul Henchan

Reported:
05/11/22 13:41

SB-6 12ft
2205049-06 (Soil)

Summit Scientific

Volatile Organic Compounds by EPA Method 8260B

Date Sampled: **05/03/22 00:00**

Analyte	Result	Reporting	Units	Dilution	Batch	Prepared	Analyzed	Method	Notes
		Limit							
Benzene	ND	0.0020	mg/kg	1	BFE0085	05/05/22	05/05/22	EPA 8260B	
Toluene	ND	0.0050	"	"	"	"	"	"	
Ethylbenzene	ND	0.0050	"	"	"	"	"	"	
Xylenes (total)	ND	0.010	"	"	"	"	"	"	
1,2,4-Trimethylbenzene	ND	0.0050	"	"	"	"	"	"	
1,3,5-Trimethylbenzene	ND	0.0050	"	"	"	"	"	"	
Naphthalene	ND	0.0038	"	"	"	"	"	"	
Gasoline Range Hydrocarbons	ND	0.50	"	"	"	"	"	"	

Date Sampled: **05/03/22 00:00**

Analyte	Result	Reporting	Units	Dilution	Batch	Prepared	Analyzed	Method	Notes
		Limit							
Surrogate: 1,2-Dichloroethane-d4	0.0362	90.6 %	50-150		"	"	"	"	
Surrogate: Toluene-d8	0.0388	97.0 %	50-150		"	"	"	"	
Surrogate: 4-Bromofluorobenzene	0.0366	91.4 %	50-150		"	"	"	"	

Extractable Petroleum Hydrocarbons by 8015

Date Sampled: **05/03/22 00:00**

Analyte	Result	Reporting	Units	Dilution	Batch	Prepared	Analyzed	Method	Notes
		Limit							
C10-C28 (DRO)	ND	50	mg/kg	1	BFE0087	05/05/22	05/06/22	EPA 8015M	
C28-C36 (ORO)	ND	50	"	"	"	"	"	"	

Date Sampled: **05/03/22 00:00**

Analyte	Result	Reporting	Units	Dilution	Batch	Prepared	Analyzed	Method	Notes
		Limit							
Surrogate: o-Terphenyl	11.8	94.1 %	30-150		"	"	"	"	

PAH by EPA Method 8270D SIM

Summit Scientific

The results in this report apply to the samples analyzed in accordance with the chain of custody document. This analytical report must be reproduced in its entirety.



Fremont Environmental
PO Box 1289
Wellington CO, 80549

Project: Noble - Beeler 22-12, 13

Project Number: [none]
Project Manager: Paul Henchan

Reported:
05/11/22 13:41

SB-6 12ft
2205049-06 (Soil)

Summit Scientific

PAH by EPA Method 8270D SIM

Date Sampled: **05/03/22 00:00**

Analyte	Result	Reporting	Units	Dilution	Batch	Prepared	Analyzed	Method	Notes
		Limit							
Acenaphthene	ND	0.00500	mg/kg	1	BFE0089	05/05/22	05/06/22	EPA 8270D SIM	
Anthracene	ND	0.00500	"	"	"	"	"	"	
Benzo (a) anthracene	ND	0.00500	"	"	"	"	"	"	
Benzo (a) pyrene	ND	0.00500	"	"	"	"	"	"	
Benzo (b) fluoranthene	ND	0.00500	"	"	"	"	"	"	
Benzo (k) fluoranthene	ND	0.00500	"	"	"	"	"	"	
Chrysene	ND	0.00500	"	"	"	"	"	"	
Dibenz (a,h) anthracene	ND	0.00500	"	"	"	"	"	"	
Fluoranthene	ND	0.00500	"	"	"	"	"	"	
Fluorene	ND	0.00500	"	"	"	"	"	"	
Indeno (1,2,3-cd) pyrene	ND	0.00500	"	"	"	"	"	"	
Pyrene	ND	0.00500	"	"	"	"	"	"	
1-Methylnaphthalene	ND	0.00500	"	"	"	"	"	"	
2-Methylnaphthalene	ND	0.00500	"	"	"	"	"	"	

Date Sampled: **05/03/22 00:00**

Analyte	Result	Reporting	Units	Dilution	Batch	Prepared	Analyzed	Method	Notes
		Limit							
Surrogate: 2-Methylnaphthalene-d10	0.0195	58.5 %	40-150		"	"	"	"	
Surrogate: Fluoranthene-d10	0.0192	57.5 %	40-150		"	"	"	"	

Summit Scientific

The results in this report apply to the samples analyzed in accordance with the chain of custody document. This analytical report must be reproduced in its entirety.



Fremont Environmental
PO Box 1289
Wellington CO, 80549

Project: Noble - Beeler 22-12, 13

Project Number: [none]
Project Manager: Paul Henchan

Reported:
05/11/22 13:41

SB-7 12ft
2205049-07 (Soil)

Summit Scientific

Volatile Organic Compounds by EPA Method 8260B

Date Sampled: **05/03/22 00:00**

Analyte	Result	Reporting	Units	Dilution	Batch	Prepared	Analyzed	Method	Notes
		Limit							
Benzene	ND	0.0020	mg/kg	1	BFE0085	05/05/22	05/05/22	EPA 8260B	
Toluene	ND	0.0050	"	"	"	"	"	"	
Ethylbenzene	ND	0.0050	"	"	"	"	"	"	
Xylenes (total)	ND	0.010	"	"	"	"	"	"	
1,2,4-Trimethylbenzene	ND	0.0050	"	"	"	"	"	"	
1,3,5-Trimethylbenzene	ND	0.0050	"	"	"	"	"	"	
Naphthalene	ND	0.0038	"	"	"	"	"	"	
Gasoline Range Hydrocarbons	ND	0.50	"	"	"	"	"	"	

Date Sampled: **05/03/22 00:00**

Analyte	Result	Reporting	Units	Dilution	Batch	Prepared	Analyzed	Method	Notes
		Limit							
Surrogate: 1,2-Dichloroethane-d4	0.0355	88.8 %	50-150		"	"	"	"	
Surrogate: Toluene-d8	0.0386	96.4 %	50-150		"	"	"	"	
Surrogate: 4-Bromofluorobenzene	0.0373	93.3 %	50-150		"	"	"	"	

Extractable Petroleum Hydrocarbons by 8015

Date Sampled: **05/03/22 00:00**

Analyte	Result	Reporting	Units	Dilution	Batch	Prepared	Analyzed	Method	Notes
		Limit							
C10-C28 (DRO)	ND	50	mg/kg	1	BFE0087	05/05/22	05/06/22	EPA 8015M	
C28-C36 (ORO)	ND	50	"	"	"	"	"	"	

Date Sampled: **05/03/22 00:00**

Analyte	Result	Reporting	Units	Dilution	Batch	Prepared	Analyzed	Method	Notes
		Limit							
Surrogate: o-Terphenyl	11.8	94.3 %	30-150		"	"	"	"	

PAH by EPA Method 8270D SIM

Summit Scientific

The results in this report apply to the samples analyzed in accordance with the chain of custody document. This analytical report must be reproduced in its entirety.



Fremont Environmental
PO Box 1289
Wellington CO, 80549

Project: Noble - Beeler 22-12, 13

Project Number: [none]
Project Manager: Paul Henchan

Reported:
05/11/22 13:41

SB-7 12ft
2205049-07 (Soil)

Summit Scientific

PAH by EPA Method 8270D SIM

Date Sampled: **05/03/22 00:00**

Analyte	Result	Reporting	Units	Dilution	Batch	Prepared	Analyzed	Method	Notes
		Limit							
Acenaphthene	ND	0.00500	mg/kg	1	BFE0089	05/05/22	05/06/22	EPA 8270D SIM	
Anthracene	ND	0.00500	"	"	"	"	"	"	
Benzo (a) anthracene	ND	0.00500	"	"	"	"	"	"	
Benzo (a) pyrene	ND	0.00500	"	"	"	"	"	"	
Benzo (b) fluoranthene	ND	0.00500	"	"	"	"	"	"	
Benzo (k) fluoranthene	ND	0.00500	"	"	"	"	"	"	
Chrysene	ND	0.00500	"	"	"	"	"	"	
Dibenz (a,h) anthracene	ND	0.00500	"	"	"	"	"	"	
Fluoranthene	ND	0.00500	"	"	"	"	"	"	
Fluorene	ND	0.00500	"	"	"	"	"	"	
Indeno (1,2,3-cd) pyrene	ND	0.00500	"	"	"	"	"	"	
Pyrene	ND	0.00500	"	"	"	"	"	"	
1-Methylnaphthalene	ND	0.00500	"	"	"	"	"	"	
2-Methylnaphthalene	ND	0.00500	"	"	"	"	"	"	

Date Sampled: **05/03/22 00:00**

Analyte	Result	Reporting	Units	Dilution	Batch	Prepared	Analyzed	Method	Notes
		Limit							
Surrogate: 2-Methylnaphthalene-d10	0.0191	57.3 %	40-150		"	"	"	"	
Surrogate: Fluoranthene-d10	0.0182	54.7 %	40-150		"	"	"	"	

Summit Scientific

The results in this report apply to the samples analyzed in accordance with the chain of custody document. This analytical report must be reproduced in its entirety.



Fremont Environmental
PO Box 1289
Wellington CO, 80549

Project: Noble - Beeler 22-12, 13

Project Number: [none]
Project Manager: Paul Henchan

Reported:
05/11/22 13:41

SB-8 10ft
2205049-08 (Soil)

Summit Scientific

Volatile Organic Compounds by EPA Method 8260B

Date Sampled: **05/03/22 00:00**

Analyte	Result	Reporting	Units	Dilution	Batch	Prepared	Analyzed	Method	Notes
		Limit							
Benzene	ND	0.0020	mg/kg	1	BFE0085	05/05/22	05/05/22	EPA 8260B	
Toluene	ND	0.0050	"	"	"	"	"	"	
Ethylbenzene	ND	0.0050	"	"	"	"	"	"	
Xylenes (total)	ND	0.010	"	"	"	"	"	"	
1,2,4-Trimethylbenzene	ND	0.0050	"	"	"	"	"	"	
1,3,5-Trimethylbenzene	ND	0.0050	"	"	"	"	"	"	
Naphthalene	ND	0.0038	"	"	"	"	"	"	
Gasoline Range Hydrocarbons	ND	0.50	"	"	"	"	"	"	

Date Sampled: **05/03/22 00:00**

Analyte	Result	Reporting	Units	Dilution	Batch	Prepared	Analyzed	Method	Notes
		Limit							
Surrogate: 1,2-Dichloroethane-d4	0.0349	87.2 %	50-150		"	"	"	"	
Surrogate: Toluene-d8	0.0386	96.4 %	50-150		"	"	"	"	
Surrogate: 4-Bromofluorobenzene	0.0364	91.0 %	50-150		"	"	"	"	

Extractable Petroleum Hydrocarbons by 8015

Date Sampled: **05/03/22 00:00**

Analyte	Result	Reporting	Units	Dilution	Batch	Prepared	Analyzed	Method	Notes
		Limit							
C10-C28 (DRO)	ND	50	mg/kg	1	BFE0087	05/05/22	05/06/22	EPA 8015M	
C28-C36 (ORO)	ND	50	"	"	"	"	"	"	

Date Sampled: **05/03/22 00:00**

Analyte	Result	Reporting	Units	Dilution	Batch	Prepared	Analyzed	Method	Notes
		Limit							
Surrogate: o-Terphenyl	11.0	87.8 %	30-150		"	"	"	"	

PAH by EPA Method 8270D SIM

Summit Scientific

The results in this report apply to the samples analyzed in accordance with the chain of custody document. This analytical report must be reproduced in its entirety.



Fremont Environmental
PO Box 1289
Wellington CO, 80549

Project: Noble - Beeler 22-12, 13

Project Number: [none]
Project Manager: Paul Henchan

Reported:
05/11/22 13:41

SB-8 10ft
2205049-08 (Soil)

Summit Scientific

PAH by EPA Method 8270D SIM

Date Sampled: **05/03/22 00:00**

Analyte	Result	Reporting	Units	Dilution	Batch	Prepared	Analyzed	Method	Notes
		Limit							
Acenaphthene	ND	0.00500	mg/kg	1	BFE0089	05/05/22	05/06/22	EPA 8270D SIM	
Anthracene	ND	0.00500	"	"	"	"	"	"	
Benzo (a) anthracene	ND	0.00500	"	"	"	"	"	"	
Benzo (a) pyrene	ND	0.00500	"	"	"	"	"	"	
Benzo (b) fluoranthene	ND	0.00500	"	"	"	"	"	"	
Benzo (k) fluoranthene	ND	0.00500	"	"	"	"	"	"	
Chrysene	ND	0.00500	"	"	"	"	"	"	
Dibenz (a,h) anthracene	ND	0.00500	"	"	"	"	"	"	
Fluoranthene	ND	0.00500	"	"	"	"	"	"	
Fluorene	ND	0.00500	"	"	"	"	"	"	
Indeno (1,2,3-cd) pyrene	ND	0.00500	"	"	"	"	"	"	
Pyrene	ND	0.00500	"	"	"	"	"	"	
1-Methylnaphthalene	ND	0.00500	"	"	"	"	"	"	
2-Methylnaphthalene	ND	0.00500	"	"	"	"	"	"	

Date Sampled: **05/03/22 00:00**

Analyte	Result	Reporting	Units	Dilution	Batch	Prepared	Analyzed	Method	Notes
		Limit							
Surrogate: 2-Methylnaphthalene-d10	0.0140	41.9 %	40-150		"	"	"	"	
Surrogate: Fluoranthene-d10	0.0134	40.1 %	40-150		"	"	"	"	

Summit Scientific

The results in this report apply to the samples analyzed in accordance with the chain of custody document. This analytical report must be reproduced in its entirety.



Fremont Environmental
PO Box 1289
Wellington CO, 80549

Project: Noble - Beeler 22-12, 13

Project Number: [none]
Project Manager: Paul Henchan

Reported:
05/11/22 13:41

SB-9 7ft
2205049-09 (Soil)

Summit Scientific

Volatile Organic Compounds by EPA Method 8260B

Date Sampled: **05/03/22 00:00**

Analyte	Result	Reporting Limit	Units	Dilution	Batch	Prepared	Analyzed	Method	Notes
Benzene	ND	0.0020	mg/kg	1	BFE0085	05/05/22	05/06/22	EPA 8260B	
Toluene	ND	0.0050	"	"	"	"	"	"	
Ethylbenzene	ND	0.0050	"	"	"	"	"	"	
Xylenes (total)	ND	0.010	"	"	"	"	"	"	
1,2,4-Trimethylbenzene	ND	0.0050	"	"	"	"	"	"	
1,3,5-Trimethylbenzene	ND	0.0050	"	"	"	"	"	"	
Naphthalene	ND	0.0038	"	"	"	"	"	"	
Gasoline Range Hydrocarbons	3.5	0.50	"	"	"	"	"	"	

Date Sampled: **05/03/22 00:00**

Analyte	Result	Reporting Limit	Units	Dilution	Batch	Prepared	Analyzed	Method	Notes
Surrogate: 1,2-Dichloroethane-d4	0.0363	90.8 %	50-150		"	"	"	"	
Surrogate: Toluene-d8	0.0412	103 %	50-150		"	"	"	"	
Surrogate: 4-Bromofluorobenzene	0.0584	146 %	50-150		"	"	"	"	

Extractable Petroleum Hydrocarbons by 8015

Date Sampled: **05/03/22 00:00**

Analyte	Result	Reporting Limit	Units	Dilution	Batch	Prepared	Analyzed	Method	Notes
C10-C28 (DRO)	270	50	mg/kg	1	BFE0087	05/05/22	05/06/22	EPA 8015M	
C28-C36 (ORO)	ND	50	"	"	"	"	"	"	

Date Sampled: **05/03/22 00:00**

Analyte	Result	Reporting Limit	Units	Dilution	Batch	Prepared	Analyzed	Method	Notes
Surrogate: o-Terphenyl	11.4	91.4 %	30-150		"	"	"	"	

PAH by EPA Method 8270D SIM

Summit Scientific

The results in this report apply to the samples analyzed in accordance with the chain of custody document. This analytical report must be reproduced in its entirety.



Fremont Environmental
PO Box 1289
Wellington CO, 80549

Project: Noble - Beeler 22-12, 13

Project Number: [none]
Project Manager: Paul Henchan

Reported:
05/11/22 13:41

SB-9 7ft
2205049-09 (Soil)

Summit Scientific

PAH by EPA Method 8270D SIM

Date Sampled: **05/03/22 00:00**

Analyte	Result	Reporting Limit	Units	Dilution	Batch	Prepared	Analyzed	Method	Notes
Acenaphthene	ND	0.00500	mg/kg	1	BFE0089	05/05/22	05/06/22	EPA 8270D SIM	
Anthracene	ND	0.00500	"	"	"	"	"	"	
Benzo (a) anthracene	ND	0.00500	"	"	"	"	"	"	
Benzo (a) pyrene	ND	0.00500	"	"	"	"	"	"	
Benzo (b) fluoranthene	ND	0.00500	"	"	"	"	"	"	
Benzo (k) fluoranthene	ND	0.00500	"	"	"	"	"	"	
Chrysene	ND	0.00500	"	"	"	"	"	"	
Dibenz (a,h) anthracene	ND	0.00500	"	"	"	"	"	"	
Fluoranthene	ND	0.00500	"	"	"	"	"	"	
Fluorene	0.00647	0.00500	"	"	"	"	"	"	
Indeno (1,2,3-cd) pyrene	ND	0.00500	"	"	"	"	"	"	
Pyrene	ND	0.00500	"	"	"	"	"	"	
1-Methylnaphthalene	0.0671	0.00500	"	"	"	"	"	"	
2-Methylnaphthalene	ND	0.00500	"	"	"	"	"	"	

Date Sampled: **05/03/22 00:00**

Analyte	Result	Reporting Limit	Units	Dilution	Batch	Prepared	Analyzed	Method	Notes
Surrogate: 2-Methylnaphthalene-d10	0.0236	70.7 %	40-150		"	"	"	"	
Surrogate: Fluoranthene-d10	0.0198	59.4 %	40-150		"	"	"	"	

Summit Scientific

The results in this report apply to the samples analyzed in accordance with the chain of custody document. This analytical report must be reproduced in its entirety.



Fremont Environmental
PO Box 1289
Wellington CO, 80549

Project: Noble - Beeler 22-12, 13

Project Number: [none]
Project Manager: Paul Henchan

Reported:
05/11/22 13:41

SB-10 11ft
2205049-10 (Soil)

Summit Scientific

Volatile Organic Compounds by EPA Method 8260B

Date Sampled: **05/03/22 00:00**

Analyte	Result	Reporting	Units	Dilution	Batch	Prepared	Analyzed	Method	Notes
		Limit							
Benzene	ND	0.0020	mg/kg	1	BFE0085	05/05/22	05/06/22	EPA 8260B	
Toluene	ND	0.0050	"	"	"	"	"	"	
Ethylbenzene	ND	0.0050	"	"	"	"	"	"	
Xylenes (total)	ND	0.010	"	"	"	"	"	"	
1,2,4-Trimethylbenzene	ND	0.0050	"	"	"	"	"	"	
1,3,5-Trimethylbenzene	ND	0.0050	"	"	"	"	"	"	
Naphthalene	ND	0.0038	"	"	"	"	"	"	
Gasoline Range Hydrocarbons	ND	0.50	"	"	"	"	"	"	

Date Sampled: **05/03/22 00:00**

Analyte	Result	Reporting	Units	Dilution	Batch	Prepared	Analyzed	Method	Notes
		Limit							
Surrogate: 1,2-Dichloroethane-d4	0.0365	91.4 %	50-150		"	"	"	"	
Surrogate: Toluene-d8	0.0403	101 %	50-150		"	"	"	"	
Surrogate: 4-Bromofluorobenzene	0.0365	91.3 %	50-150		"	"	"	"	

Extractable Petroleum Hydrocarbons by 8015

Date Sampled: **05/03/22 00:00**

Analyte	Result	Reporting	Units	Dilution	Batch	Prepared	Analyzed	Method	Notes
		Limit							
C10-C28 (DRO)	ND	50	mg/kg	1	BFE0087	05/05/22	05/06/22	EPA 8015M	
C28-C36 (ORO)	ND	50	"	"	"	"	"	"	

Date Sampled: **05/03/22 00:00**

Analyte	Result	Reporting	Units	Dilution	Batch	Prepared	Analyzed	Method	Notes
		Limit							
Surrogate: o-Terphenyl	11.6	92.7 %	30-150		"	"	"	"	

PAH by EPA Method 8270D SIM

Summit Scientific

The results in this report apply to the samples analyzed in accordance with the chain of custody document. This analytical report must be reproduced in its entirety.



Fremont Environmental
PO Box 1289
Wellington CO, 80549

Project: Noble - Beeler 22-12, 13

Project Number: [none]
Project Manager: Paul Henchan

Reported:
05/11/22 13:41

SB-10 11ft
2205049-10 (Soil)

Summit Scientific

PAH by EPA Method 8270D SIM

Date Sampled: **05/03/22 00:00**

Analyte	Result	Reporting	Units	Dilution	Batch	Prepared	Analyzed	Method	Notes
		Limit							
Acenaphthene	ND	0.00500	mg/kg	1	BFE0089	05/05/22	05/06/22	EPA 8270D SIM	
Anthracene	ND	0.00500	"	"	"	"	"	"	
Benzo (a) anthracene	ND	0.00500	"	"	"	"	"	"	
Benzo (a) pyrene	ND	0.00500	"	"	"	"	"	"	
Benzo (b) fluoranthene	ND	0.00500	"	"	"	"	"	"	
Benzo (k) fluoranthene	ND	0.00500	"	"	"	"	"	"	
Chrysene	ND	0.00500	"	"	"	"	"	"	
Dibenz (a,h) anthracene	ND	0.00500	"	"	"	"	"	"	
Fluoranthene	ND	0.00500	"	"	"	"	"	"	
Fluorene	ND	0.00500	"	"	"	"	"	"	
Indeno (1,2,3-cd) pyrene	ND	0.00500	"	"	"	"	"	"	
Pyrene	ND	0.00500	"	"	"	"	"	"	
1-Methylnaphthalene	ND	0.00500	"	"	"	"	"	"	
2-Methylnaphthalene	ND	0.00500	"	"	"	"	"	"	

Date Sampled: **05/03/22 00:00**

Analyte	Result	Reporting	Units	Dilution	Batch	Prepared	Analyzed	Method	Notes
		Limit							
Surrogate: 2-Methylnaphthalene-d10	0.0159	47.6 %	40-150		"	"	"	"	
Surrogate: Fluoranthene-d10	0.0154	46.3 %	40-150		"	"	"	"	

Summit Scientific

The results in this report apply to the samples analyzed in accordance with the chain of custody document. This analytical report must be reproduced in its entirety.



Fremont Environmental
PO Box 1289
Wellington CO, 80549

Project: Noble - Beeler 22-12, 13

Project Number: [none]
Project Manager: Paul Henchan

Reported:
05/11/22 13:41

SB-11 6ft
2205049-11 (Soil)

Summit Scientific

Volatile Organic Compounds by EPA Method 8260B

Date Sampled: **05/03/22 00:00**

Analyte	Result	Reporting	Units	Dilution	Batch	Prepared	Analyzed	Method	Notes
		Limit							
Benzene	ND	0.0020	mg/kg	1	BFE0085	05/05/22	05/06/22	EPA 8260B	
Toluene	ND	0.0050	"	"	"	"	"	"	
Ethylbenzene	ND	0.0050	"	"	"	"	"	"	
Xylenes (total)	ND	0.010	"	"	"	"	"	"	
1,2,4-Trimethylbenzene	ND	0.0050	"	"	"	"	"	"	
1,3,5-Trimethylbenzene	ND	0.0050	"	"	"	"	"	"	
Naphthalene	ND	0.0038	"	"	"	"	"	"	
Gasoline Range Hydrocarbons	ND	0.50	"	"	"	"	"	"	

Date Sampled: **05/03/22 00:00**

Analyte	Result	Reporting	Units	Dilution	Batch	Prepared	Analyzed	Method	Notes
		Limit							
Surrogate: 1,2-Dichloroethane-d4	0.0361	90.2 %	50-150		"	"	"	"	
Surrogate: Toluene-d8	0.0394	98.5 %	50-150		"	"	"	"	
Surrogate: 4-Bromofluorobenzene	0.0366	91.4 %	50-150		"	"	"	"	

Extractable Petroleum Hydrocarbons by 8015

Date Sampled: **05/03/22 00:00**

Analyte	Result	Reporting	Units	Dilution	Batch	Prepared	Analyzed	Method	Notes
		Limit							
C10-C28 (DRO)	ND	50	mg/kg	1	BFE0087	05/05/22	05/06/22	EPA 8015M	
C28-C36 (ORO)	ND	50	"	"	"	"	"	"	

Date Sampled: **05/03/22 00:00**

Analyte	Result	Reporting	Units	Dilution	Batch	Prepared	Analyzed	Method	Notes
		Limit							
Surrogate: o-Terphenyl	12.2	97.9 %	30-150		"	"	"	"	

PAH by EPA Method 8270D SIM

Summit Scientific

The results in this report apply to the samples analyzed in accordance with the chain of custody document. This analytical report must be reproduced in its entirety.



Fremont Environmental
PO Box 1289
Wellington CO, 80549

Project: Noble - Beeler 22-12, 13

Project Number: [none]
Project Manager: Paul Henchan

Reported:
05/11/22 13:41

SB-11 6ft
2205049-11 (Soil)

Summit Scientific

PAH by EPA Method 8270D SIM

Date Sampled: **05/03/22 00:00**

Analyte	Result	Reporting	Units	Dilution	Batch	Prepared	Analyzed	Method	Notes
		Limit							
Acenaphthene	ND	0.00500	mg/kg	1	BFE0089	05/05/22	05/06/22	EPA 8270D SIM	
Anthracene	ND	0.00500	"	"	"	"	"	"	
Benzo (a) anthracene	ND	0.00500	"	"	"	"	"	"	
Benzo (a) pyrene	ND	0.00500	"	"	"	"	"	"	
Benzo (b) fluoranthene	ND	0.00500	"	"	"	"	"	"	
Benzo (k) fluoranthene	ND	0.00500	"	"	"	"	"	"	
Chrysene	0.0320	0.00500	"	"	"	"	"	"	
Dibenz (a,h) anthracene	ND	0.00500	"	"	"	"	"	"	
Fluoranthene	ND	0.00500	"	"	"	"	"	"	
Fluorene	ND	0.00500	"	"	"	"	"	"	
Indeno (1,2,3-cd) pyrene	ND	0.00500	"	"	"	"	"	"	
Pyrene	0.0130	0.00500	"	"	"	"	"	"	
1-Methylnaphthalene	ND	0.00500	"	"	"	"	"	"	
2-Methylnaphthalene	ND	0.00500	"	"	"	"	"	"	

Date Sampled: **05/03/22 00:00**

Analyte	Result	Reporting	Units	Dilution	Batch	Prepared	Analyzed	Method	Notes
		Limit							
Surrogate: 2-Methylnaphthalene-d10	0.0392	118 %	40-150		"	"	"	"	
Surrogate: Fluoranthene-d10	0.0197	59.1 %	40-150		"	"	"	"	

Summit Scientific

The results in this report apply to the samples analyzed in accordance with the chain of custody document. This analytical report must be reproduced in its entirety.



Fremont Environmental
PO Box 1289
Wellington CO, 80549

Project: Noble - Beeler 22-12, 13

Project Number: [none]
Project Manager: Paul Henchan

Reported:
05/11/22 13:41

SB-12 6ft
2205049-12 (Soil)

Summit Scientific

Volatile Organic Compounds by EPA Method 8260B

Date Sampled: **05/03/22 00:00**

Analyte	Result	Reporting	Units	Dilution	Batch	Prepared	Analyzed	Method	Notes
		Limit							
Benzene	ND	0.0020	mg/kg	1	BFE0085	05/05/22	05/06/22	EPA 8260B	
Toluene	ND	0.0050	"	"	"	"	"	"	
Ethylbenzene	ND	0.0050	"	"	"	"	"	"	
Xylenes (total)	ND	0.010	"	"	"	"	"	"	
1,2,4-Trimethylbenzene	ND	0.0050	"	"	"	"	"	"	
1,3,5-Trimethylbenzene	ND	0.0050	"	"	"	"	"	"	
Naphthalene	ND	0.0038	"	"	"	"	"	"	
Gasoline Range Hydrocarbons	ND	0.50	"	"	"	"	"	"	

Date Sampled: **05/03/22 00:00**

Analyte	Result	Reporting	Units	Dilution	Batch	Prepared	Analyzed	Method	Notes
		Limit							
Surrogate: 1,2-Dichloroethane-d4	0.0361	90.3 %	50-150		"	"	"	"	
Surrogate: Toluene-d8	0.0396	99.1 %	50-150		"	"	"	"	
Surrogate: 4-Bromofluorobenzene	0.0368	91.9 %	50-150		"	"	"	"	

Extractable Petroleum Hydrocarbons by 8015

Date Sampled: **05/03/22 00:00**

Analyte	Result	Reporting	Units	Dilution	Batch	Prepared	Analyzed	Method	Notes
		Limit							
C10-C28 (DRO)	170	50	mg/kg	1	BFE0087	05/05/22	05/06/22	EPA 8015M	
C28-C36 (ORO)	ND	50	"	"	"	"	"	"	

Date Sampled: **05/03/22 00:00**

Analyte	Result	Reporting	Units	Dilution	Batch	Prepared	Analyzed	Method	Notes
		Limit							
Surrogate: o-Terphenyl	11.8	94.2 %	30-150		"	"	"	"	

PAH by EPA Method 8270D SIM

Summit Scientific

The results in this report apply to the samples analyzed in accordance with the chain of custody document. This analytical report must be reproduced in its entirety.



Fremont Environmental
PO Box 1289
Wellington CO, 80549

Project: Noble - Beeler 22-12, 13

Project Number: [none]
Project Manager: Paul Henchan

Reported:
05/11/22 13:41

SB-12 6ft
2205049-12 (Soil)

Summit Scientific

PAH by EPA Method 8270D SIM

Date Sampled: **05/03/22 00:00**

Analyte	Result	Reporting Limit	Units	Dilution	Batch	Prepared	Analyzed	Method	Notes
Acenaphthene	ND	0.00500	mg/kg	1	BFE0089	05/05/22	05/06/22	EPA 8270D SIM	
Anthracene	ND	0.00500	"	"	"	"	"	"	
Benzo (a) anthracene	ND	0.00500	"	"	"	"	"	"	
Benzo (a) pyrene	ND	0.00500	"	"	"	"	"	"	
Benzo (b) fluoranthene	ND	0.00500	"	"	"	"	"	"	
Benzo (k) fluoranthene	ND	0.00500	"	"	"	"	"	"	
Chrysene	0.0236	0.00500	"	"	"	"	"	"	
Dibenz (a,h) anthracene	ND	0.00500	"	"	"	"	"	"	
Fluoranthene	ND	0.00500	"	"	"	"	"	"	
Fluorene	ND	0.00500	"	"	"	"	"	"	
Indeno (1,2,3-cd) pyrene	ND	0.00500	"	"	"	"	"	"	
Pyrene	0.00807	0.00500	"	"	"	"	"	"	
1-Methylnaphthalene	0.0247	0.00500	"	"	"	"	"	"	
2-Methylnaphthalene	ND	0.00500	"	"	"	"	"	"	

Date Sampled: **05/03/22 00:00**

Analyte	Result	Reporting Limit	Units	Dilution	Batch	Prepared	Analyzed	Method	Notes
Surrogate: 2-Methylnaphthalene-d10	0.0298	89.4 %	40-150		"	"	"	"	
Surrogate: Fluoranthene-d10	0.0216	64.7 %	40-150		"	"	"	"	

Summit Scientific

The results in this report apply to the samples analyzed in accordance with the chain of custody document. This analytical report must be reproduced in its entirety.



Fremont Environmental
PO Box 1289
Wellington CO, 80549

Project: Noble - Beeler 22-12, 13

Project Number: [none]
Project Manager: Paul Henehan

Reported:
05/11/22 13:41

SB-13 10ft
2205049-13 (Soil)

Summit Scientific

Volatile Organic Compounds by EPA Method 8260B

Date Sampled: **05/03/22 00:00**

Analyte	Result	Reporting	Units	Dilution	Batch	Prepared	Analyzed	Method	Notes
		Limit							
Benzene	ND	0.0020	mg/kg	1	BFE0085	05/05/22	05/06/22	EPA 8260B	
Toluene	ND	0.0050	"	"	"	"	"	"	
Ethylbenzene	ND	0.0050	"	"	"	"	"	"	
Xylenes (total)	ND	0.010	"	"	"	"	"	"	
1,2,4-Trimethylbenzene	ND	0.0050	"	"	"	"	"	"	
1,3,5-Trimethylbenzene	ND	0.0050	"	"	"	"	"	"	
Naphthalene	ND	0.0038	"	"	"	"	"	"	
Gasoline Range Hydrocarbons	ND	0.50	"	"	"	"	"	"	

Date Sampled: **05/03/22 00:00**

Analyte	Result	Reporting	Units	Dilution	Batch	Prepared	Analyzed	Method	Notes
		Limit							
Surrogate: 1,2-Dichloroethane-d4	0.0369	92.2 %	50-150		"	"	"	"	
Surrogate: Toluene-d8	0.0392	98.0 %	50-150		"	"	"	"	
Surrogate: 4-Bromofluorobenzene	0.0375	93.7 %	50-150		"	"	"	"	

Extractable Petroleum Hydrocarbons by 8015

Date Sampled: **05/03/22 00:00**

Analyte	Result	Reporting	Units	Dilution	Batch	Prepared	Analyzed	Method	Notes
		Limit							
C10-C28 (DRO)	ND	50	mg/kg	1	BFE0087	05/05/22	05/06/22	EPA 8015M	
C28-C36 (ORO)	ND	50	"	"	"	"	"	"	

Date Sampled: **05/03/22 00:00**

Analyte	Result	Reporting	Units	Dilution	Batch	Prepared	Analyzed	Method	Notes
		Limit							
Surrogate: o-Terphenyl	11.5	92.3 %	30-150		"	"	"	"	

PAH by EPA Method 8270D SIM

Summit Scientific

The results in this report apply to the samples analyzed in accordance with the chain of custody document. This analytical report must be reproduced in its entirety.



Fremont Environmental
PO Box 1289
Wellington CO, 80549

Project: Noble - Beeler 22-12, 13

Project Number: [none]
Project Manager: Paul Henchan

Reported:
05/11/22 13:41

SB-13 10ft
2205049-13 (Soil)

Summit Scientific

PAH by EPA Method 8270D SIM

Date Sampled: **05/03/22 00:00**

Analyte	Result	Reporting	Units	Dilution	Batch	Prepared	Analyzed	Method	Notes
		Limit							
Acenaphthene	ND	0.00500	mg/kg	1	BFE0089	05/05/22	05/06/22	EPA 8270D SIM	
Anthracene	ND	0.00500	"	"	"	"	"	"	
Benzo (a) anthracene	ND	0.00500	"	"	"	"	"	"	
Benzo (a) pyrene	ND	0.00500	"	"	"	"	"	"	
Benzo (b) fluoranthene	ND	0.00500	"	"	"	"	"	"	
Benzo (k) fluoranthene	ND	0.00500	"	"	"	"	"	"	
Chrysene	ND	0.00500	"	"	"	"	"	"	
Dibenz (a,h) anthracene	ND	0.00500	"	"	"	"	"	"	
Fluoranthene	ND	0.00500	"	"	"	"	"	"	
Fluorene	ND	0.00500	"	"	"	"	"	"	
Indeno (1,2,3-cd) pyrene	ND	0.00500	"	"	"	"	"	"	
Pyrene	ND	0.00500	"	"	"	"	"	"	
1-Methylnaphthalene	ND	0.00500	"	"	"	"	"	"	
2-Methylnaphthalene	ND	0.00500	"	"	"	"	"	"	

Date Sampled: **05/03/22 00:00**

Analyte	Result	Reporting	Units	Dilution	Batch	Prepared	Analyzed	Method	Notes
		Limit							
Surrogate: 2-Methylnaphthalene-d10	0.0167	50.2 %	40-150		"	"	"	"	
Surrogate: Fluoranthene-d10	0.0158	47.4 %	40-150		"	"	"	"	

Summit Scientific

The results in this report apply to the samples analyzed in accordance with the chain of custody document. This analytical report must be reproduced in its entirety.



Fremont Environmental
PO Box 1289
Wellington CO, 80549

Project: Noble - Beeler 22-12, 13

Project Number: [none]
Project Manager: Paul Henchan

Reported:
05/11/22 13:41

SB-14 6ft
2205049-14 (Soil)

Summit Scientific

Volatile Organic Compounds by EPA Method 8260B

Date Sampled: **05/03/22 00:00**

Analyte	Result	Reporting	Units	Dilution	Batch	Prepared	Analyzed	Method	Notes
		Limit							
Benzene	ND	0.0020	mg/kg	1	BFE0085	05/05/22	05/06/22	EPA 8260B	
Toluene	ND	0.0050	"	"	"	"	"	"	
Ethylbenzene	ND	0.0050	"	"	"	"	"	"	
Xylenes (total)	ND	0.010	"	"	"	"	"	"	
1,2,4-Trimethylbenzene	ND	0.0050	"	"	"	"	"	"	
1,3,5-Trimethylbenzene	ND	0.0050	"	"	"	"	"	"	
Naphthalene	ND	0.0038	"	"	"	"	"	"	
Gasoline Range Hydrocarbons	ND	0.50	"	"	"	"	"	"	

Date Sampled: **05/03/22 00:00**

Analyte	Result	Reporting	Units	Dilution	Batch	Prepared	Analyzed	Method	Notes
		Limit							
Surrogate: 1,2-Dichloroethane-d4	0.0373	93.2 %	50-150		"	"	"	"	
Surrogate: Toluene-d8	0.0400	100 %	50-150		"	"	"	"	
Surrogate: 4-Bromofluorobenzene	0.0373	93.2 %	50-150		"	"	"	"	

Extractable Petroleum Hydrocarbons by 8015

Date Sampled: **05/03/22 00:00**

Analyte	Result	Reporting	Units	Dilution	Batch	Prepared	Analyzed	Method	Notes
		Limit							
C10-C28 (DRO)	ND	50	mg/kg	1	BFE0087	05/05/22	05/06/22	EPA 8015M	
C28-C36 (ORO)	ND	50	"	"	"	"	"	"	

Date Sampled: **05/03/22 00:00**

Analyte	Result	Reporting	Units	Dilution	Batch	Prepared	Analyzed	Method	Notes
		Limit							
Surrogate: o-Terphenyl	11.8	94.8 %	30-150		"	"	"	"	

PAH by EPA Method 8270D SIM

Summit Scientific

The results in this report apply to the samples analyzed in accordance with the chain of custody document. This analytical report must be reproduced in its entirety.



Fremont Environmental
PO Box 1289
Wellington CO, 80549

Project: Noble - Beeler 22-12, 13

Project Number: [none]
Project Manager: Paul Henchan

Reported:
05/11/22 13:41

SB-14 6ft
2205049-14 (Soil)

Summit Scientific

PAH by EPA Method 8270D SIM

Date Sampled: **05/03/22 00:00**

Analyte	Result	Reporting	Units	Dilution	Batch	Prepared	Analyzed	Method	Notes
		Limit							
Acenaphthene	ND	0.00500	mg/kg	1	BFE0089	05/05/22	05/06/22	EPA 8270D SIM	
Anthracene	ND	0.00500	"	"	"	"	"	"	
Benzo (a) anthracene	ND	0.00500	"	"	"	"	"	"	
Benzo (a) pyrene	ND	0.00500	"	"	"	"	"	"	
Benzo (b) fluoranthene	ND	0.00500	"	"	"	"	"	"	
Benzo (k) fluoranthene	ND	0.00500	"	"	"	"	"	"	
Chrysene	ND	0.00500	"	"	"	"	"	"	
Dibenz (a,h) anthracene	ND	0.00500	"	"	"	"	"	"	
Fluoranthene	ND	0.00500	"	"	"	"	"	"	
Fluorene	ND	0.00500	"	"	"	"	"	"	
Indeno (1,2,3-cd) pyrene	ND	0.00500	"	"	"	"	"	"	
Pyrene	ND	0.00500	"	"	"	"	"	"	
1-Methylnaphthalene	ND	0.00500	"	"	"	"	"	"	
2-Methylnaphthalene	ND	0.00500	"	"	"	"	"	"	

Date Sampled: **05/03/22 00:00**

Analyte	Result	Reporting	Units	Dilution	Batch	Prepared	Analyzed	Method	Notes
		Limit							
Surrogate: 2-Methylnaphthalene-d10	0.0162	48.5 %	40-150		"	"	"	"	
Surrogate: Fluoranthene-d10	0.0170	50.9 %	40-150		"	"	"	"	

Summit Scientific

The results in this report apply to the samples analyzed in accordance with the chain of custody document. This analytical report must be reproduced in its entirety.



Fremont Environmental
PO Box 1289
Wellington CO, 80549

Project: Noble - Beeler 22-12, 13

Project Number: [none]
Project Manager: Paul Henehan

Reported:
05/11/22 13:41

SB-15 10ft
2205049-15 (Soil)

Summit Scientific

Volatile Organic Compounds by EPA Method 8260B

Date Sampled: **05/03/22 00:00**

Analyte	Result	Reporting	Units	Dilution	Batch	Prepared	Analyzed	Method	Notes
		Limit							
Benzene	ND	0.0020	mg/kg	1	BFE0085	05/05/22	05/06/22	EPA 8260B	
Toluene	ND	0.0050	"	"	"	"	"	"	
Ethylbenzene	ND	0.0050	"	"	"	"	"	"	
Xylenes (total)	ND	0.010	"	"	"	"	"	"	
1,2,4-Trimethylbenzene	ND	0.0050	"	"	"	"	"	"	
1,3,5-Trimethylbenzene	ND	0.0050	"	"	"	"	"	"	
Naphthalene	ND	0.0038	"	"	"	"	"	"	
Gasoline Range Hydrocarbons	ND	0.50	"	"	"	"	"	"	

Date Sampled: **05/03/22 00:00**

Analyte	Result	Reporting	Units	Dilution	Batch	Prepared	Analyzed	Method	Notes
		Limit							
Surrogate: 1,2-Dichloroethane-d4	0.0358	89.5 %	50-150		"	"	"	"	
Surrogate: Toluene-d8	0.0398	99.4 %	50-150		"	"	"	"	
Surrogate: 4-Bromofluorobenzene	0.0371	92.7 %	50-150		"	"	"	"	

Extractable Petroleum Hydrocarbons by 8015

Date Sampled: **05/03/22 00:00**

Analyte	Result	Reporting	Units	Dilution	Batch	Prepared	Analyzed	Method	Notes
		Limit							
C10-C28 (DRO)	ND	50	mg/kg	1	BFE0087	05/05/22	05/06/22	EPA 8015M	
C28-C36 (ORO)	ND	50	"	"	"	"	"	"	

Date Sampled: **05/03/22 00:00**

Analyte	Result	Reporting	Units	Dilution	Batch	Prepared	Analyzed	Method	Notes
		Limit							
Surrogate: o-Terphenyl	10.7	85.7 %	30-150		"	"	"	"	

PAH by EPA Method 8270D SIM

Summit Scientific

The results in this report apply to the samples analyzed in accordance with the chain of custody document. This analytical report must be reproduced in its entirety.



Fremont Environmental
PO Box 1289
Wellington CO, 80549

Project: Noble - Beeler 22-12, 13

Project Number: [none]
Project Manager: Paul Henchan

Reported:
05/11/22 13:41

SB-15 10ft
2205049-15 (Soil)

Summit Scientific

PAH by EPA Method 8270D SIM

Date Sampled: **05/03/22 00:00**

Analyte	Result	Reporting	Units	Dilution	Batch	Prepared	Analyzed	Method	Notes
		Limit							
Acenaphthene	ND	0.00500	mg/kg	1	BFE0089	05/05/22	05/06/22	EPA 8270D SIM	
Anthracene	ND	0.00500	"	"	"	"	"	"	
Benzo (a) anthracene	ND	0.00500	"	"	"	"	"	"	
Benzo (a) pyrene	ND	0.00500	"	"	"	"	"	"	
Benzo (b) fluoranthene	ND	0.00500	"	"	"	"	"	"	
Benzo (k) fluoranthene	ND	0.00500	"	"	"	"	"	"	
Chrysene	ND	0.00500	"	"	"	"	"	"	
Dibenz (a,h) anthracene	ND	0.00500	"	"	"	"	"	"	
Fluoranthene	ND	0.00500	"	"	"	"	"	"	
Fluorene	ND	0.00500	"	"	"	"	"	"	
Indeno (1,2,3-cd) pyrene	ND	0.00500	"	"	"	"	"	"	
Pyrene	ND	0.00500	"	"	"	"	"	"	
1-Methylnaphthalene	ND	0.00500	"	"	"	"	"	"	
2-Methylnaphthalene	ND	0.00500	"	"	"	"	"	"	

Date Sampled: **05/03/22 00:00**

Analyte	Result	Reporting	Units	Dilution	Batch	Prepared	Analyzed	Method	Notes
		Limit							
Surrogate: 2-Methylnaphthalene-d10	0.0143	42.9 %	40-150		"	"	"	"	
Surrogate: Fluoranthene-d10	0.0145	43.4 %	40-150		"	"	"	"	

Summit Scientific

The results in this report apply to the samples analyzed in accordance with the chain of custody document. This analytical report must be reproduced in its entirety.



Fremont Environmental
PO Box 1289
Wellington CO, 80549

Project: Noble - Beeler 22-12, 13

Project Number: [none]
Project Manager: Paul Henchan

Reported:
05/11/22 13:41

Volatile Organic Compounds by EPA Method 8260B - Quality Control

Summit Scientific

Analyte	Reporting			Spike	Source		%REC		RPD	
	Result	Limit	Units	Level	Result	%REC	Limits	RPD	Limit	Notes

Batch BFE0085 - EPA 5030 Soil MS

Blank (BFE0085-BLK1)

Prepared & Analyzed: 05/05/22

Benzene	ND	0.0020	mg/kg							
Toluene	ND	0.0050	"							
Ethylbenzene	ND	0.0050	"							
Xylenes (total)	ND	0.010	"							
1,2,4-Trimethylbenzene	ND	0.0050	"							
1,3,5-Trimethylbenzene	ND	0.0050	"							
Naphthalene	ND	0.0038	"							
Gasoline Range Hydrocarbons	ND	0.50	"							
Surrogate: 1,2-Dichloroethane-d4	0.0358		"	0.0400		89.6	50-150			
Surrogate: Toluene-d8	0.0377		"	0.0400		94.3	50-150			
Surrogate: 4-Bromofluorobenzene	0.0370		"	0.0400		92.4	50-150			

LCS (BFE0085-BS1)

Prepared & Analyzed: 05/05/22

Benzene	0.0615	0.0020	mg/kg	0.0750		82.0	70-130			
Toluene	0.0773	0.0050	"	0.0750		103	70-130			
Ethylbenzene	0.0654	0.0050	"	0.0750		87.2	70-130			
m,p-Xylene	0.158	0.010	"	0.150		105	70-130			
o-Xylene	0.0746	0.0050	"	0.0750		99.4	70-130			
1,2,4-Trimethylbenzene	0.0743	0.0050	"	0.0750		99.1	70-130			
1,3,5-Trimethylbenzene	0.0705	0.0050	"	0.0750		94.0	70-130			
Naphthalene	0.0966	0.0038	"	0.0750		129	70-130			
Surrogate: 1,2-Dichloroethane-d4	0.0374		"	0.0400		93.6	50-150			
Surrogate: Toluene-d8	0.0439		"	0.0400		110	50-150			
Surrogate: 4-Bromofluorobenzene	0.0400		"	0.0400		100	50-150			

Matrix Spike (BFE0085-MS1)

Source: 2205049-02

Prepared & Analyzed: 05/05/22

Benzene	0.0612	0.0020	mg/kg	0.0750	ND	81.6	70-130			
Toluene	0.0663	0.0050	"	0.0750	ND	88.4	70-130			
Ethylbenzene	0.0563	0.0050	"	0.0750	ND	75.0	70-130			
m,p-Xylene	0.138	0.010	"	0.150	ND	92.0	70-130			
o-Xylene	0.0702	0.0050	"	0.0750	ND	93.6	70-130			
1,2,4-Trimethylbenzene	0.0696	0.0050	"	0.0750	ND	92.8	70-130			
1,3,5-Trimethylbenzene	0.0664	0.0050	"	0.0750	ND	88.6	70-130			
Naphthalene	0.0746	0.0038	"	0.0750	ND	99.4	70-130			
Surrogate: 1,2-Dichloroethane-d4	0.0357		"	0.0400		89.2	50-150			
Surrogate: Toluene-d8	0.0388		"	0.0400		97.0	50-150			
Surrogate: 4-Bromofluorobenzene	0.0409		"	0.0400		102	50-150			

Summit Scientific

The results in this report apply to the samples analyzed in accordance with the chain of custody document. This analytical report must be reproduced in its entirety.



Fremont Environmental
PO Box 1289
Wellington CO, 80549

Project: Noble - Beeler 22-12, 13

Project Number: [none]
Project Manager: Paul Henchan

Reported:
05/11/22 13:41

Volatile Organic Compounds by EPA Method 8260B - Quality Control
Summit Scientific

Analyte	Reporting			Spike	Source		%REC		RPD	
	Result	Limit	Units	Level	Result	%REC	Limits	RPD	Limit	Notes

Batch BFE0085 - EPA 5030 Soil MS

Matrix Spike Dup (BFE0085-MSD1)		Source: 2205049-02			Prepared & Analyzed: 05/05/22					
Benzene	0.0622	0.0020	mg/kg	0.0750	ND	82.9	70-130	1.60	30	
Toluene	0.0667	0.0050	"	0.0750	ND	89.0	70-130	0.677	30	
Ethylbenzene	0.0613	0.0050	"	0.0750	ND	81.7	70-130	8.52	30	
m,p-Xylene	0.148	0.010	"	0.150	ND	98.5	70-130	6.78	30	
o-Xylene	0.0739	0.0050	"	0.0750	ND	98.5	70-130	5.04	30	
1,2,4-Trimethylbenzene	0.0732	0.0050	"	0.0750	ND	97.6	70-130	5.09	30	
1,3,5-Trimethylbenzene	0.0697	0.0050	"	0.0750	ND	92.9	70-130	4.72	30	
Naphthalene	0.0899	0.0038	"	0.0750	ND	120	70-130	18.6	30	
<hr/>										
Surrogate: 1,2-Dichloroethane-d4	0.0357		"	0.0400		89.2	50-150			
Surrogate: Toluene-d8	0.0388		"	0.0400		97.1	50-150			
Surrogate: 4-Bromofluorobenzene	0.0395		"	0.0400		98.7	50-150			

Summit Scientific

The results in this report apply to the samples analyzed in accordance with the chain of custody document. This analytical report must be reproduced in its entirety.



Fremont Environmental
PO Box 1289
Wellington CO, 80549

Project: Noble - Beeler 22-12, 13

Project Number: [none]
Project Manager: Paul Henchan

Reported:
05/11/22 13:41

Extractable Petroleum Hydrocarbons by 8015 - Quality Control
Summit Scientific

Analyte	Result	Reporting		Spike Level	Source		%REC		RPD	
		Limit	Units		Result	%REC	Limits	RPD	Limit	Notes

Batch BFE0087 - EPA 3550A

Blank (BFE0087-BLK1)

Prepared: 05/05/22 Analyzed: 05/06/22

C10-C28 (DRO)	ND	50	mg/kg
C28-C36 (ORO)	ND	50	"

LCS (BFE0087-BS1)

Prepared: 05/05/22 Analyzed: 05/06/22

C10-C28 (DRO)	450	50	mg/kg	500	90.0	70-130
---------------	-----	----	-------	-----	------	--------

Matrix Spike (BFE0087-MS1)

Source: 2205049-02

Prepared: 05/05/22 Analyzed: 05/06/22

C10-C28 (DRO)	455	50	mg/kg	500	29.9	85.1	70-130
---------------	-----	----	-------	-----	------	------	--------

Matrix Spike Dup (BFE0087-MSD1)

Source: 2205049-02

Prepared: 05/05/22 Analyzed: 05/06/22

C10-C28 (DRO)	470	50	mg/kg	500	29.9	88.0	70-130	3.16	20
---------------	-----	----	-------	-----	------	------	--------	------	----

Summit Scientific

The results in this report apply to the samples analyzed in accordance with the chain of custody document. This analytical report must be reproduced in its entirety.



Fremont Environmental
PO Box 1289
Wellington CO, 80549

Project: Noble - Beeler 22-12, 13

Project Number: [none]
Project Manager: Paul Henchan

Reported:
05/11/22 13:41

PAH by EPA Method 8270D SIM - Quality Control

Summit Scientific

Reporting				Spike	Source	%REC			RPD	
Analyte	Result	Limit	Units	Level	Result	%REC	Limits	RPD	Limit	Notes

Batch BFE0089 - EPA 5030 Soil MS

Blank (BFE0089-BLK1)

Prepared: 05/05/22 Analyzed: 05/06/22

Acenaphthene	ND	0.00500	mg/kg							
Anthracene	ND	0.00500	"							
Benzo (a) anthracene	ND	0.00500	"							
Benzo (a) pyrene	ND	0.00500	"							
Benzo (b) fluoranthene	ND	0.00500	"							
Benzo (k) fluoranthene	ND	0.00500	"							
Chrysene	ND	0.00500	"							
Dibenz (a,h) anthracene	ND	0.00500	"							
Fluoranthene	ND	0.00500	"							
Fluorene	ND	0.00500	"							
Indeno (1,2,3-cd) pyrene	ND	0.00500	"							
Pyrene	ND	0.00500	"							
1-Methylnaphthalene	ND	0.00500	"							
2-Methylnaphthalene	ND	0.00500	"							
Surrogate: 2-Methylnaphthalene-d10	0.0208		"	0.0333		62.5	40-150			
Surrogate: Fluoranthene-d10	0.0228		"	0.0333		68.5	40-150			

LCS (BFE0089-BS1)

Prepared: 05/05/22 Analyzed: 05/06/22

Acenaphthene	0.0200	0.00500	mg/kg	0.0333	59.9	31-137
Anthracene	0.0204	0.00500	"	0.0333	61.1	30-120
Benzo (a) anthracene	0.0203	0.00500	"	0.0333	61.0	30-120
Benzo (a) pyrene	0.0232	0.00500	"	0.0333	69.5	30-120
Benzo (b) fluoranthene	0.0247	0.00500	"	0.0333	74.1	30-120
Benzo (k) fluoranthene	0.0245	0.00500	"	0.0333	73.5	30-120
Chrysene	0.0195	0.00500	"	0.0333	58.5	30-120
Dibenz (a,h) anthracene	0.0210	0.00500	"	0.0333	63.0	30-120
Fluoranthene	0.0210	0.00500	"	0.0333	62.9	30-120
Fluorene	0.0192	0.00500	"	0.0333	57.7	30-120
Indeno (1,2,3-cd) pyrene	0.0207	0.00500	"	0.0333	62.2	30-120
Pyrene	0.0215	0.00500	"	0.0333	64.5	35-142
1-Methylnaphthalene	0.0203	0.00500	"	0.0333	60.9	35-142
2-Methylnaphthalene	0.0243	0.00500	"	0.0333	72.9	35-142
Surrogate: 2-Methylnaphthalene-d10	0.0209		"	0.0333	62.7	40-150
Surrogate: Fluoranthene-d10	0.0200		"	0.0333	60.1	40-150

Summit Scientific

The results in this report apply to the samples analyzed in accordance with the chain of custody document. This analytical report must be reproduced in its entirety.



Fremont Environmental
PO Box 1289
Wellington CO, 80549

Project: Noble - Beeler 22-12, 13

Project Number: [none]
Project Manager: Paul Henchan

Reported:
05/11/22 13:41

PAH by EPA Method 8270D SIM - Quality Control

Summit Scientific

Analyte	Reporting			Spike Level	Source		%REC		RPD	
	Result	Limit	Units		Result	%REC	Limits	RPD	Limit	Notes

Batch BFE0089 - EPA 5030 Soil MS

Matrix Spike (BFE0089-MS1)

Source: 2205049-01

Prepared: 05/05/22 Analyzed: 05/06/22

Acenaphthene	0.0182	0.00500	mg/kg	0.0333	ND	54.6	31-137		
Anthracene	0.0192	0.00500	"	0.0333	ND	57.7	30-120		
Benzo (a) anthracene	0.0182	0.00500	"	0.0333	ND	54.7	30-120		
Benzo (a) pyrene	0.0214	0.00500	"	0.0333	ND	64.2	30-120		
Benzo (b) fluoranthene	0.0224	0.00500	"	0.0333	ND	67.2	30-120		
Benzo (k) fluoranthene	0.0222	0.00500	"	0.0333	ND	66.6	30-120		
Chrysene	0.0181	0.00500	"	0.0333	ND	54.2	30-120		
Dibenz (a,h) anthracene	0.0186	0.00500	"	0.0333	ND	55.8	30-120		
Fluoranthene	0.0198	0.00500	"	0.0333	ND	59.3	30-120		
Fluorene	0.0166	0.00500	"	0.0333	ND	49.9	30-120		
Indeno (1,2,3-cd) pyrene	0.0177	0.00500	"	0.0333	ND	53.2	30-120		
Pyrene	0.0197	0.00500	"	0.0333	ND	59.2	35-142		
1-Methylnaphthalene	0.0182	0.00500	"	0.0333	ND	54.6	15-130		
2-Methylnaphthalene	0.0173	0.00500	"	0.0333	ND	52.0	15-130		
Surrogate: 2-Methylnaphthalene-d10	0.0183		"	0.0333		54.9	40-150		
Surrogate: Fluoranthene-d10	0.0192		"	0.0333		57.6	40-150		

Matrix Spike Dup (BFE0089-MSD1)

Source: 2205049-01

Prepared: 05/05/22 Analyzed: 05/06/22

Acenaphthene	0.0195	0.00500	mg/kg	0.0333	ND	58.4	31-137	6.70	30
Anthracene	0.0195	0.00500	"	0.0333	ND	58.4	30-120	1.24	30
Benzo (a) anthracene	0.0172	0.00500	"	0.0333	ND	51.6	30-120	5.97	30
Benzo (a) pyrene	0.0197	0.00500	"	0.0333	ND	59.2	30-120	8.05	30
Benzo (b) fluoranthene	0.0210	0.00500	"	0.0333	ND	63.0	30-120	6.33	30
Benzo (k) fluoranthene	0.0211	0.00500	"	0.0333	ND	63.2	30-120	5.33	30
Chrysene	0.0167	0.00500	"	0.0333	ND	50.1	30-120	7.90	30
Dibenz (a,h) anthracene	0.0175	0.00500	"	0.0333	ND	52.5	30-120	6.07	30
Fluoranthene	0.0202	0.00500	"	0.0333	ND	60.6	30-120	2.28	30
Fluorene	0.0191	0.00500	"	0.0333	ND	57.2	30-120	13.6	30
Indeno (1,2,3-cd) pyrene	0.0176	0.00500	"	0.0333	ND	52.8	30-120	0.841	30
Pyrene	0.0179	0.00500	"	0.0333	ND	53.8	35-142	9.73	30
1-Methylnaphthalene	0.0173	0.00500	"	0.0333	ND	52.0	15-130	4.96	50
2-Methylnaphthalene	0.0179	0.00500	"	0.0333	ND	53.7	15-130	3.25	50
Surrogate: 2-Methylnaphthalene-d10	0.0180		"	0.0333		54.0	40-150		
Surrogate: Fluoranthene-d10	0.0198		"	0.0333		59.4	40-150		

Summit Scientific

The results in this report apply to the samples analyzed in accordance with the chain of custody document. This analytical report must be reproduced in its entirety.



Fremont Environmental
PO Box 1289
Wellington CO, 80549

Project: Noble - Beeler 22-12, 13

Project Number: [none]
Project Manager: Paul Henchan

Reported:
05/11/22 13:41

Notes and Definitions

DET	Analyte DETECTED
ND	Analyte NOT DETECTED at or above the reporting limit
NR	Not Reported
dry	Sample results reported on a dry weight basis
RPD	Relative Percent Difference