





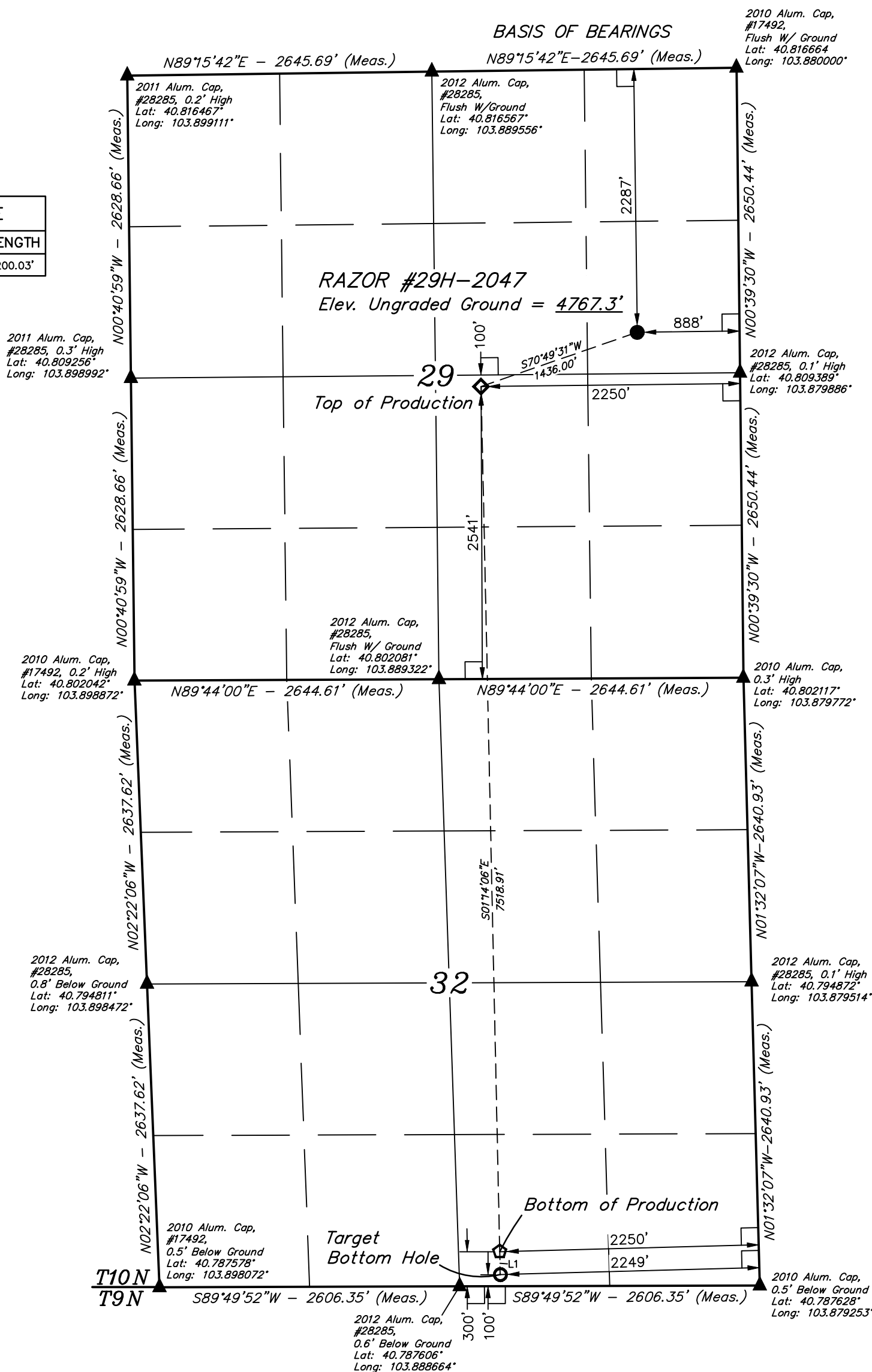


*T10N, R58W, 6th P.M.*

-  = 90° SYMBOL  
 = PROPOSED WELLHEAD.  
 = TOP OF PRODUCTION.  
 = BOTTOM OF PRODUCTION.  
 = TARGET BOTTOM HOLE.  
 = SECTION CORNERS LOCATED. (NAD 83)

LINE TABLE		
LINE	DIRECTION	LENGTH
L1	S01°14'06"E	200.03'



CERTIFICATE

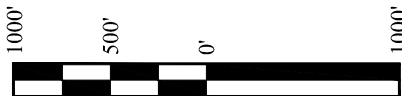
THIS IS TO CERTIFY THAT THE ABOVE THAT WAS PREPARED FROM FIELD NOTES OF ACTUAL SURVEYS MADE BY ME OR UNDER MY SUPERVISION AND THAT THE SAME ARE TRUE AND CORRECT TO THE BEST OF MY KNOWLEDGE AND BELIEF.



REGISTERED LAND SURVEYOR  
REGISTRATION NO. 28285  
STATE OF COLORADO

REV: 2 08-22-22 P.M. (ADD BOTTOM  
HOLE & CORRECT SURVEYED DATE)

**PDOP = 1.3**



<b>NAD 83 (SURFACE LOCATION)</b>	<b>NAD 83 (TOP OF PRODUCTION)</b>	<b>NAD 83 (BOTTOM OF PRODUCTION)</b>	<b>NAD 83 (TARGET BOTTOM HOLE)</b>
LATITUDE = 40°48'37.28" (40.810356)	LATITUDE = 40°48'32.61" (40.809058)	LATITUDE = 40°47'18.35" (40.788431)	LATITUDE = 40°47'16.38" (40.787882)
LONGITUDE = 103°52'59.20" (103.883111)	LONGITUDE = 103°53'16.83" (103.888008)	LONGITUDE = 103°53'14.67" (103.887408)	LONGITUDE = 103°53'14.61" (103.887392)
<b>NAD 27 (SURFACE LOCATION)</b>	<b>NAD 27 (TOP OF PRODUCTION)</b>	<b>NAD 27 (BOTTOM OF PRODUCTION)</b>	<b>NAD 27 (TARGET BOTTOM HOLE)</b>
LATITUDE = 40°48'37.33" (40.810369)	LATITUDE = 40°48'32.66" (40.809072)	LATITUDE = 40°47'18.40" (40.788444)	LATITUDE = 40°47'16.42" (40.787895)
LONGITUDE = 103°52'57.39" (103.882608)	LONGITUDE = 103°53'15.02" (103.887505)	LONGITUDE = 103°53'12.86" (103.886905)	LONGITUDE = 103°53'12.80" (103.886889)

### BASIS OF ELEVATION

SPOT ELEVATION LOCATED AT THE NORTHEAST CORNER OF SECTION 15, T9N, R58W, 6th P.M. TAKEN FROM THE GATEHOOK SPRING, QUADRANGLE, COLORADO, WELD COUNTY, 7.5 MINUTE QUAD (TOPOGRAPHIC MAP) PUBLISHED BY THE UNITED STATES DEPARTMENT OF THE INTERIOR, GEOLOGICAL SURVEY. SAID ELEVATION IS MARKED AS BEING 4679 FEET.



**UELS, LLC**  
Corporate Office \* 85 South 200 East  
Vernal, UT 84078 \* (435) 789-1017

**FUNDARE RESOURCES OPERATING COMPANY, LLC**

**RAZOR #29H-2047**  
**SE 1/4 NE 1/4, SECTION 29, T10N, R58W, 6th P.M.**  
**WELD COUNTY, COLORADO**

<b>SURVEYED BY</b>	DALLAS NIELSEN, L.P.	04-18-14	<b>SCALE</b>
<b>DRAWN BY</b>	L.K.	01-19-22	1" = 1000'

## WELL LOCATION PLAT