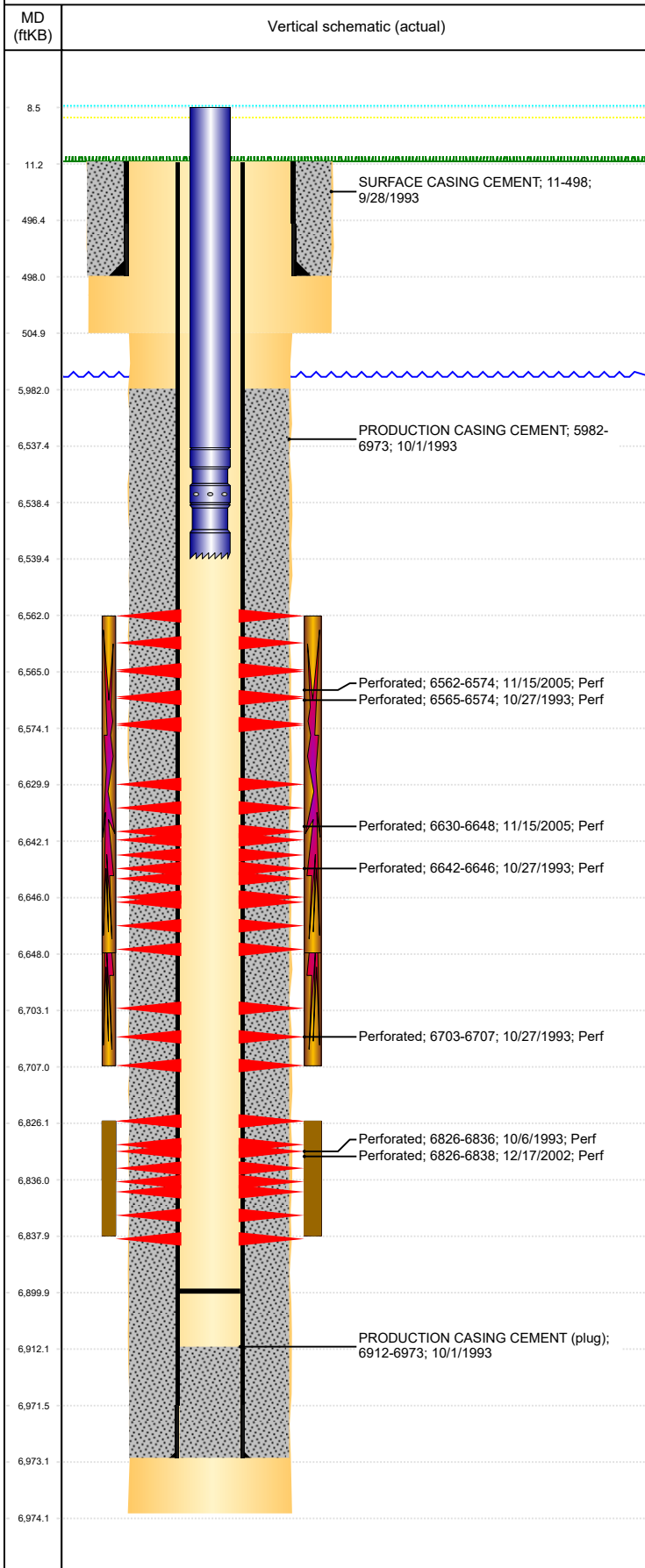




P&A Wellbore For State

Well Name: CANTRELL 22-12

Land, Original Hole, 8/15/2022 10:13:51 AM



Well Header

Surface UWI 0512317361		Business Unit Rockies		Gov Auth Dist		Prod Tree Loc Land			
Orig. KB to Gnd (ft) 11.00		Original Spud Date 9/27/1993		Abandon Date		Well Sub-Status SI		High... N	
Comment									

Surface Location (Congressional)

Qtr 3 NW	Qtr 4 SW	Section 22	Twonshp 4	Twonsh... N	Range 64	Rng E/L... W	Latitude (°) 40.29661929 8	Longitude (°) -104.543356003
-------------	-------------	---------------	--------------	----------------	-------------	-----------------	----------------------------------	---------------------------------

Wellbore Sections

Section Des	Hole Size (in)	Act Top (ftKB)	Act Btm (ftKB)
SURFACE	12 1/4	11.0	505.0
PRODUCTION	7 7/8	505.0	6,974.0

Casing Strings

Csg Des	Run Date	OD (in)	Wt/Len (lb/ft)	Grade	Top Depth (MD) (ftKB)	Set Depth (MD) (ftKB)
Surface	9/28/1993	8 5/8	23.00		11	498
Production Casing	10/1/1993	3 1/2	7.70	M-75	11	6973

Cement

Des	Start Date	Top (ftKB)	Btm (ftKB)
SURFACE CASING CEMENT	9/28/1993	11.0	498.0
PRODUCTION CASING CEMENT	10/1/1993	5,982.0	6,973.0

Zone Statuses

Zone Name	Status Date	Status	Fluid Type	Job	Prod Method
NIOBRARA	1/2/2006	PR	Gas	RE-FRAC, 11/11/2005 00:00	Flowing Flowing
NIOBRARA	6/19/2009	PR			
CODELL	6/19/2009	PR			
CODELL	3/9/2012	PR	Gas	TRI-FRAC, 1/23/2012 06:00	

Perforation Data

Linked Zone	Explosive Type	Entered Shot Total	Top (ftKB)	Btm (ftKB)	Date
NIOBRARA, Original Hole	A	72	6,562.0	6,574.0	11/15/2005
NIOBRARA, Original Hole	A	8	6,565.0	6,574.0	10/27/1993
NIOBRARA, Original Hole	B	108	6,630.0	6,648.0	11/15/2005
NIOBRARA, Original Hole	B	10	6,642.0	6,646.0	10/27/1993
NIOBRARA, Original Hole	C	6	6,703.0	6,707.0	10/27/1993
CODELL, Original Hole		20	6,826.0	6,836.0	10/6/1993
CODELL, Original Hole		48	6,826.0	6,838.0	12/17/2002

Stimulation Intervals

Zone	Start Date	Top (ftKB)	Btm (ftKB)
NIOBRARA, Original Hole	12/14/2005	6,562.0	6,648.0
NIOBRARA, Original Hole	10/28/1993	6,565.0	6,707.0
CODELL, Original Hole	10/18/1993	6,826.0	6,836.0
CODELL, Original Hole	12/19/2002	6,826.0	6,838.0
CODELL, Original Hole	1/31/2012	6,826.0	6,838.0

Other In Hole

Run Date	Des	Make	OD (in)	Top (ftKB)	Btm (ftKB)

Logs

Date	Type	Depth Top (MD) (ftKB)	Btm (ftKB)
10/1/1992	COMPENSATED DENSITY	4,140	6,970.0
10/1/1992	INDUCTION	499	6,970.0
10/6/1993	CEMENT BOND	5,800	6,912.0
3/15/2011	GYRO	10	6,800.0

Plug Back Total Depths

Date	Type	Com	PBTD (ftKB)
1/24/2012	FILL	C/O 225JTS 2' OUT. NO P/S WAS USED. NO CEMENT ON RE...	6,932
2/6/2012	FILL	CLEAN OUT SAND	6,900