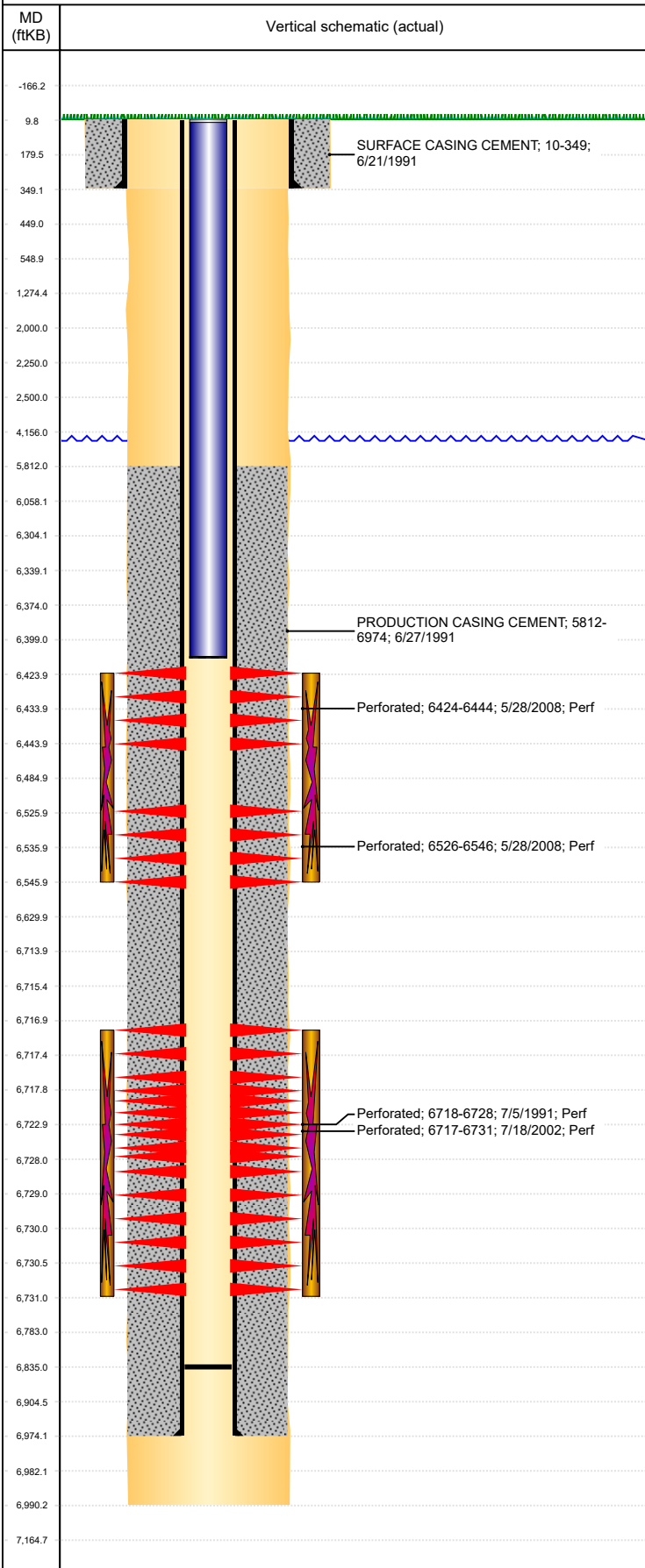




P&A Wellbore For State

Well Name: LOUSTALET B15-11

Land, Original Hole, 8/30/2022 11:53:31 AM



Well Header

Surface UWI 0512315012	Business Unit Rockies	Gov Auth Dist	Prod Tree Loc Land
Orig. KB to Gnd (ft) 10.00	Original Spud Date 6/21/1991	Abandon Date	Well Sub-Status SI
High... N			

Comment
LOGS HAVE WRONG GL, KB:10'

Surface Location (Congressional)

Qtr 3 NE	Qtr 4 SW	Section 15	Twnshp 5	Twnsh... N	Range 64	Rng E... W	Latitude (°) 40.39753487	Longitude (°) -104.53808873
-------------	-------------	---------------	-------------	---------------	-------------	---------------	-----------------------------	--------------------------------

Wellbore Sections

Section Des	Hole Size (in)	Act Top (ftKB)	Act Btm (ftKB)
SURFACE	12 1/4	10.0	349.0
PRODUCTION	7 7/8	349.0	6,990.0

Casing Strings

Csg Des	Run Date	OD (in)	Wt/Len (lb/ft)	Grade	Top Depth (MD) (ftKB)	Set Depth (MD) (ftKB)
Surface	6/21/1991	8 5/8	24.00		10	349
Production Casing	6/27/1991	2 7/8	6.50	N-80	10	6974

Cement

Des	Start Date	Top (ftKB)	Btm (ftKB)
SURFACE CASING CEMENT	6/21/1991	10.0	349.0
PRODUCTION CASING CEMENT	6/27/1991	5,812.0	6,974.0

Zone Statuses

Zone Name	Status Date	Status	Fluid Type	Job	Prod Method
NIOBRARA	6/5/2008	PR		RECOMPLETION, 5/21/2008 10:30	
NIOBRARA	8/11/2008	PR		RECOMPLETION, 5/21/2008 10:30	
CODELL	10/6/2009	PR	Water		Flowing
CODELL	3/22/2017	SI			

Perforation Data

Linked Zone	Explosive Type	Entered Shot Total	Top (ftKB)	Btm (ftKB)	Date
NIOBRARA, Original Hole	A	80	6,424.0	6,444.0	5/28/2008
NIOBRARA, Original Hole	B	80	6,526.0	6,546.0	5/28/2008
CODELL, Original Hole		56	6,717.0	6,731.0	7/18/2002
CODELL, Original Hole		40	6,718.0	6,728.0	7/5/1991

Stimulation Intervals

Zone	Start Date	Top (ftKB)	Btm (ftKB)
NIOBRARA, Original Hole	6/4/2008	6,424.0	6,546.0
CODELL, Original Hole	7/18/2002	6,717.0	6,731.0
CODELL, Original Hole	7/6/1991	6,718.0	6,728.0

Other In Hole

Run Date	Des	Make	OD (in)	Top (ftKB)	Btm (ftKB)

Logs

Date	Type	Depth Top (MD) (ftKB)	Btm (ftKB)
6/27/1991	Compensated Density	3,900	6,988.0
7/5/1991	Cement Bond	5,750	6,843.0

Plug Back Total Depths

Date	Type	Com	PBTD (ftKB)
7/30/2008	FILL	C/O TO HERE WITH TUBING.	6,915
8/8/2008	FILL		6,835