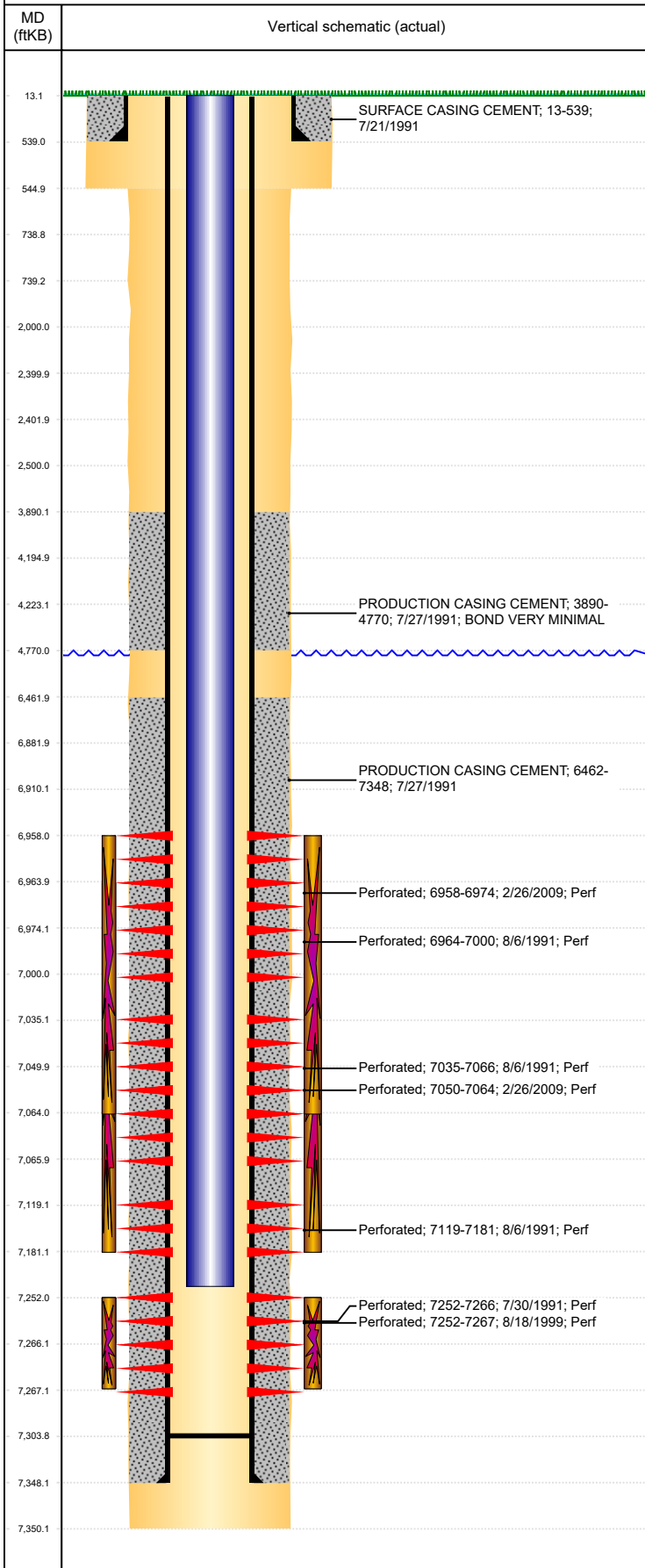




# P&A Wellbore For State

Well Name: UPRC 21-11G

Land, Original Hole, 8/29/2022 11:49:52 AM



Well Header									
Surface UWI 0512315057			Business Unit Rockies			Gov Auth Dist		Prod Tree Loc Land	
Orig. KB to Gnd (ft) 13.00		Original Spud Date 7/21/1991		Abandon Date		Well Sub-Status SI			High... N
Comment									
Surface Location (Congressional)									
Qtr 3 NE	Qtr 4 SW	Section 21	Twنشp 4	Twنش... N	Range 65	Rng E/... W	Latitude (°) 40.29608075 6	Longitude (°) -104.670633949	
Wellbore Sections									
Section Des			Hole Size (in)			Act Top (ftKB)		Act Btm (ftKB)	
SURFACE			12 1/4			13.0		545.0	
PRODUCTION			7 7/8			545.0		7,350.0	
Casing Strings									
Csg Des		Run Date		OD (in)	Wt/Len (lb/ft)	Grade	Top Depth (MD) (ftKB)	Set Depth (MD) (ftKB)	
Surface		7/21/1991		8 5/8	23.00		13	539	
Production Casing		7/21/1991		4 1/2	11.60	M-75	13	7348	
Cement									
Des				Start Date		Top (ftKB)		Btm (ftKB)	
SURFACE CASING CEMENT				7/21/1991		13.0		539.0	
PRODUCTION CASING CEMENT				7/27/1991		3,890.0		4,770.0	
PRODUCTION CASING CEMENT				7/27/1991		6,462.0		7,348.0	
Zone Statuses									
Zone Name	Status Date	Status	Fluid Type	Job				Prod Method	
NIOBRARA	4/1/2009	PR	Water	RE-FRAC, 2/25/2009 09:00				Flowing	
NIOBRARA	2/5/2010	PR							
CODELL	10/27/2016	PR							
CODELL	11/29/2016	SI							
Perforation Data									
Linked Zone		Explosive Type	Entered Shot Total	Top (ftKB)		Btm (ftKB)		Date	
NIOBRARA, Original Hole		A	64	6,958.0		6,974.0		2/26/2009	
NIOBRARA, Original Hole		A	10	6,964.0		7,000.0		8/6/1991	
NIOBRARA, Original Hole		B	10	7,035.0		7,066.0		8/6/1991	
NIOBRARA, Original Hole		B	56	7,050.0		7,064.0		2/26/2009	
NIOBRARA, Original Hole		C	12	7,119.0		7,181.0		8/6/1991	
CODELL, Original Hole			60	7,252.0		7,267.0		8/18/1999	
CODELL, Original Hole			56	7,252.0		7,266.0		7/30/1991	
Stimulation Intervals									
Zone			Start Date		Top (ftKB)		Btm (ftKB)		
NIOBRARA, Original Hole			3/13/2009		6,958.0		7,064.0		
NIOBRARA, Original Hole			8/6/1991		6,964.0		7,181.0		
CODELL, Original Hole			7/31/1991		7,252.0		7,266.0		
CODELL, Original Hole			8/20/1999		7,252.0		7,267.0		
CODELL, Original Hole			10/26/2005		7,252.0		7,267.0		
Other In Hole									
Run Date		Des			Make		OD (in)	Top (ftKB)	Btm (ftKB)
Logs									
Date		Type				Depth Top (MD) (ftKB)		Btm (ftKB)	
7/26/1991		COMPENSATED DENSITY				3,700		7,314.0	
7/26/1991		INDUCTION				538		7,342.0	
7/30/1991		SONIC				3,700		7,298.0	
8/13/1991		PRODUCTION TEMP/VELOCITY				6,600		7,272.0	
Plug Back Total Depths									
Date		Type		Com				PBTD (ftKB)	
11/3/2005				C/O LAND TBG				7,302	
3/30/2009		FILL						7,304	