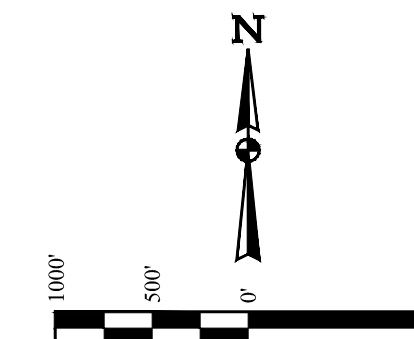
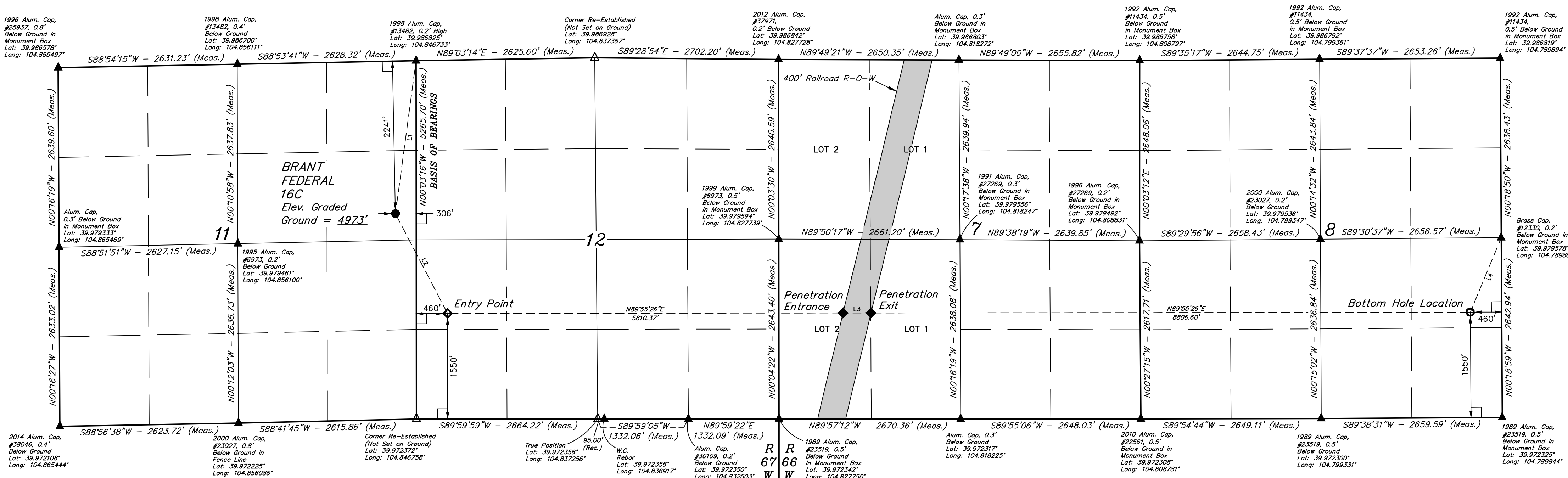


BASIS OF ELEVATION
USGS COOPERATIVE BASE NETWORK CONTROL STATION,
DESIGNATION "JR 53 5026". NGS DATA SHEET LISTS THE NAVD 88
ELEVATION AS BEING 5028 FEET.



LINE	DIRECTION	LENGTH
L1	S07°41'17"W	2267.86'
L2	S27°34'48"E	1656.45'
L3	N89°55'26"E	411.38'
L4	S22°30'10"W	1186.10'

- NOTES:**
- All bearings hereon are grid bearings of the Colorado State Plane Coordinate System, North Zone, North American Datum 1983. The bearing of the line between the corner of sections 11, 12, 13 and 14, and the corner of sections 1, 2, 11 and 12 is N.00°03'16"W.
 - The purpose of this well location plat is to show the SHL and BHL of proposed wells in relation to the exterior lines of sections containing those SHL and BHL locations.
 - The Railroad R-O-W was determined by conducting a field survey of the centerline of the railroad tracks, and incorporating a 200 foot offset on either side, for a total right-of-way width of 400 feet.
 - THIS WELL LOCATION CERTIFICATE IS NOT A LAND SURVEY PLAT OR AN IMPROVEMENT SURVEY PLAT.



CERTIFICATE
I, LOREN K. SHANKS, A DULY REGISTERED PROFESSIONAL LAND SURVEYOR IN THE STATE OF COLORADO, DO HEREBY CERTIFY THAT THIS LAND SURVEY PLAT REPRESENTS THE SURVEY MADE UNDER MY DIRECT SUPERVISION, CONTROL AND CHECKING IN ACCORDANCE WITH THE REQUIREMENTS OF SECTION 38-5-106, C.R.S., AS AN ACCURATE AND TRUE PLAT CORRECT TO THE BEST OF MY KNOWLEDGE AND BELIEF.

REGISTERED LAND SURVEYOR
REGISTRATION NO. 28285
STATE OF COLORADO
10-22

IN ACCORDANCE WITH CRS 13-80-105:
NOTICE: ACCORDING TO COLORADO LAW, YOU MUST COMMENCE ANY LEGAL ACTION BASED UPON ANY DEFECT IN THIS SURVEY WITHIN THREE YEARS AFTER YOU FIRST DISCOVER SUCH DEFECT. IN NO EVENT, MAY ANY ACTION BASED UPON ANY DEFECT IN THIS SURVEY BE COMMENCED MORE THAN TEN YEARS FROM THE DATE OF THE CERTIFICATION SHOWN HEREON.

- LEGEND:**
- ◻ = 90° SYMBOL.
 - = SURFACE LOCATION.
 - ◆ = ENTRY POINT.
 - ◆ = PENETRATION POINT.
 - = BOTTOM HOLE LOCATION.
 - ▲ = SECTION CORNERS LOCATED. (NAD 83)
 - ▲ = SECTION CORNERS RE-ESTABLISHED. (Not Set on Ground.) (NAD 83)

REV: 7 07-22-22 P.M. (REMOVE BTM PERF, COMPANY NAME, WELL NAME, EP & BHL CHANGE)

PDOP = 1.2

UJINTAH
ENGINEERS & LAND SURVEYORS
SURVEYED BY CHAD MEIERS, D.N.
DRAWN BY T.L.L.
08-10-17
07-17-18
SCALE 1" = 1000'

WELL LOCATION PLAT

NAD 83 (SURFACE LOCATION)	NAD 83 (ENTRY POINT)	NAD 83 (PENETRATION ENTRANCE)	NAD 83 (PENETRATION EXIT)	NAD 83 (BOTTOM HOLE LOCATION)
LATITUDE = 39°58'50.37" (39.980659)	LATITUDE = 39°58'35.85" (39.976624)	LATITUDE = 39°58'35.79" (39.976608)	LATITUDE = 39°58'35.78" (39.976607)	LATITUDE = 39°58'35.67" (39.976575)
LONGITUDE = 104°50'52.20" (104.847834)	LONGITUDE = 104°50'42.40" (104.845110)	LONGITUDE = 104°49'27.78" (104.824383)	LONGITUDE = 104°49'22.49" (104.822915)	LONGITUDE = 104°47'29.40" (104.791500)