

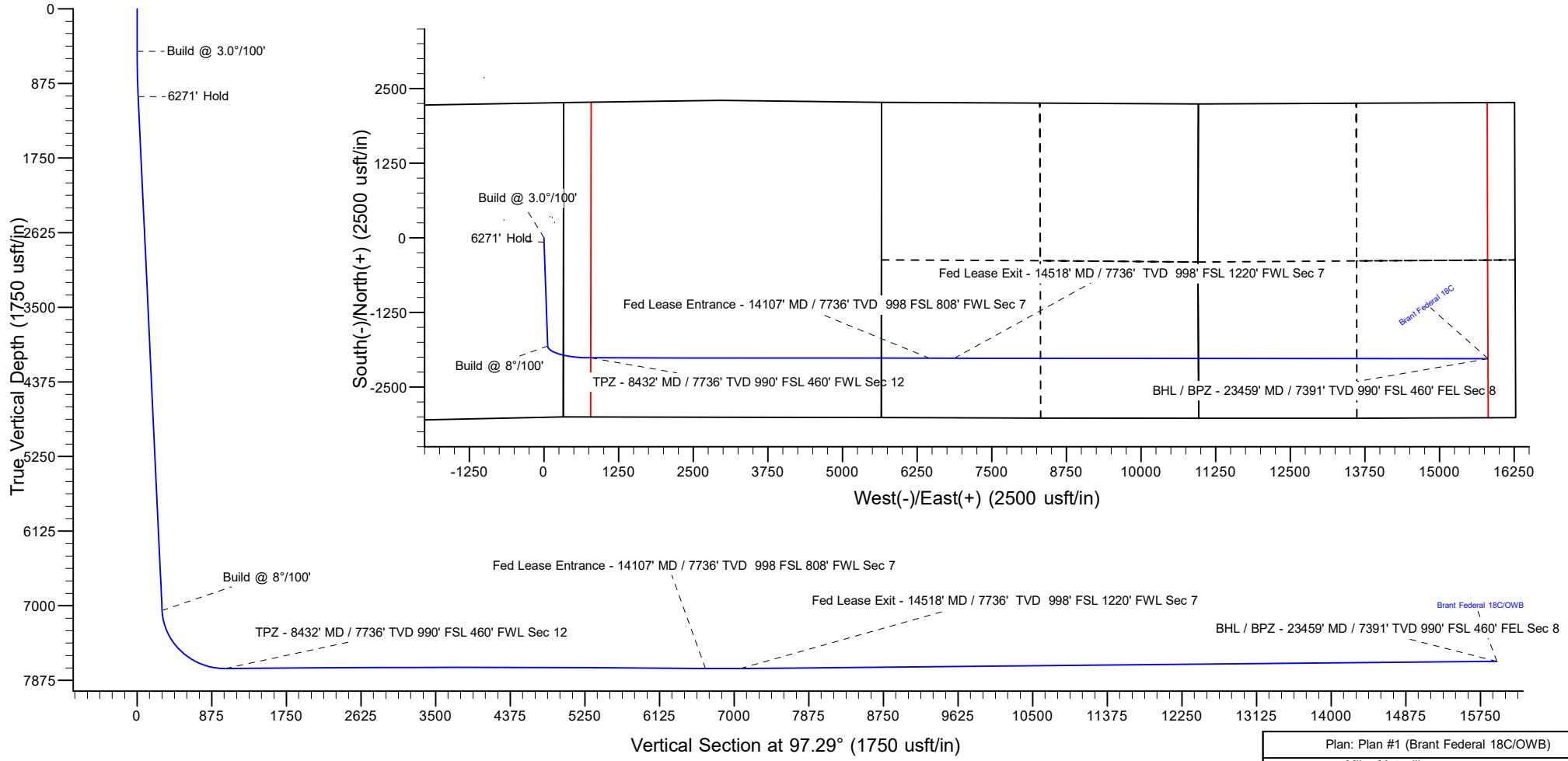


Project: ADAMS COUNTY  
 Site: Brant  
 Well: Brant Federal 18C  
 Wellbore: OWB  
 Design: Plan #1  
 Lat: 39° 58' 50.180 N  
 Long: 104° 50' 52.500 W  
 GL: 4973.0  
 KB: KB 20' @ 4993.0usft

Azimuths to True North  
 Magnetic North: 7.95°  
 Magnetic Field  
 Strength: 51875.0nT  
 Dip Angle: 66.44°  
 Date: 12/31/2019  
 Model: IGRF2015

| WELL DETAILS: Brant Federal 18C |       |            |            |                  |                   |  |
|---------------------------------|-------|------------|------------|------------------|-------------------|--|
| +N/-S                           | +E/-W | Northing   | Easting    | Latitude         | Longitude         |  |
| 0.0                             | 0.0   | 1236453.82 | 3182733.79 | 39° 58' 50.180 N | 104° 50' 52.500 W |  |

| SECTION DETAILS |       |        |        |         |         |      |         |         |   |
|-----------------|-------|--------|--------|---------|---------|------|---------|---------|---|
| MD              | Inc   | Azi    | TVD    | +N/-S   | +E/-W   | Dleg | TFace   | VSec    | Annotation  |
| 0.0             | 0.00  | 0.00   | 0.0    | 0.0     | 0.0     | 0.00 | 0.00    | 0.0     |   |
| 500.0           | 0.00  | 0.00   | 500.0  | 0.0     | 0.0     | 0.00 | 0.00    | 0.0     | Build @ 3.0°/100'   |
| 1036.2          | 16.09 | 177.99 | 1029.2 | -74.7   | 2.6     | 3.00 | 177.99  | 12.1    | 6271' Hold  |
| 7307.7          | 16.09 | 177.99 | 7055.2 | -1811.3 | 63.4    | 0.00 | 0.00    | 292.8   | Build @ 8°/100'   |
| 8432.2          | 90.54 | 90.05  | 7736.0 | -2010.1 | 785.9   | 8.00 | -87.87  | 1034.7  | TPZ - 8432' MD / 7736' TVD 990' FSL 460' FWL Sec 12               |
| 14107.1         | 89.46 | 90.05  | 7736.0 | -2015.0 | 6460.8  | 0.02 | -179.90 | 6664.3  | Fed Lease Entrance - 14107' MD / 7736' TVD 998 FSL 808' FWL Sec 7 |
| 14518.7         | 90.54 | 90.05  | 7736.0 | -2015.4 | 6872.3  | 0.26 | 0.04    | 7072.6  | Fed Lease Exit - 14518' MD / 7736' TVD 998' FSL 1220' FWL Sec 7   |
| 23459.4         | 90.54 | 90.05  | 7651.0 | -2023.2 | 15812.7 | 0.00 | 0.00    | 15941.6 | BHL / BPZ - 23459' MD / 7391' TVD 990' FSL 460' FEL Sec 8         |



**PDC Energy Inc.**  
Anticollision Summary Report

|                           |                   |                                     |                            |
|---------------------------|-------------------|-------------------------------------|----------------------------|
| <b>Company:</b>           | GWP - PLANNING DB | <b>Local Co-ordinate Reference:</b> | Well Brant Federal 18C     |
| <b>Project:</b>           | ADAMS COUNTY      | <b>TVD Reference:</b>               | KB 20' @ 4993.0usft        |
| <b>Reference Site:</b>    | Brant             | <b>MD Reference:</b>                | KB 20' @ 4993.0usft        |
| <b>Site Error:</b>        | 0.0 usft          | <b>North Reference:</b>             | True                       |
| <b>Reference Well:</b>    | Brant Federal 18C | <b>Survey Calculation Method:</b>   | Minimum Curvature          |
| <b>Well Error:</b>        | 0.0 usft          | <b>Output errors are at</b>         | 2.00 sigma                 |
| <b>Reference Wellbore</b> | OWB               | <b>Database:</b>                    | EDM 5000.15 Single User Db |
| <b>Reference Design:</b>  | Plan #1           | <b>Offset TVD Reference:</b>        | Offset Datum               |

|                                     |   |                       |                     |
|-------------------------------------|---|-----------------------|---------------------|
| <b>Reference</b>                    | Plan #1   |                       |                     |
| <b>Filter type:</b>                 | NO GLOBAL FILTER: Using user defined selection & filtering criteria |                       |                     |
| <b>Interpolation Method:</b>        | Stations  | <b>Error Model:</b>   | ISCWSA              |
| <b>Depth Range:</b>                 | Unlimited   | <b>Scan Method:</b>   | Closest Approach 3D |
| <b>Results Limited by:</b>          | Maximum center-center distance of 10,000.0 usft                     | <b>Error Surface:</b> | Pedal Curve         |
| <b>Warning Levels Evaluated at:</b> | 2.00 Sigma  | <b>Casing Method:</b> | Not applied         |

|                            |                  |                          |                  |                     |
|----------------------------|------------------|--------------------------|------------------|---------------------|
| <b>Survey Tool Program</b> | <b>Date</b>      | 7/27/2022                |                  |                     |
| <b>From (usft)</b>         | <b>To (usft)</b> | <b>Survey (Wellbore)</b> | <b>Tool Name</b> | <b>Description</b>  |
| 0.0                        | 23,459.4         | Plan #1 (OWB)            | MWD              | OWSG MWD - Standard |

| Summary                            |                                 |                              |                                 |                                  |                   |                               |
|------------------------------------|---------------------------------|------------------------------|---------------------------------|----------------------------------|-------------------|-------------------------------|
| Site Name                          | Reference Measured Depth (usft) | Offset Measured Depth (usft) | Distance Between Centres (usft) | Distance Between Ellipses (usft) | Separation Factor | Warning                       |
| Brant                              |                                 |                              |                                 |                                  |                   |                               |
| Brant Federal 20NA - OWB - Plan #1 | 754.0                           | 753.0                        | 24.0                            | 17.8                             | 3.906             | CC                            |
| Brant Federal 20NA - OWB - Plan #1 | 23,300.0                        | 23,129.0                     | 692.3                           | -16.8                            | 0.976             | No-Go Zone - Stop Drilling, E |
| Brant Federal 13NA - OWB - OWB     | 157.2                           | 157.2                        | 75.1                            | 73.1                             | 36.539            | CC                            |
| Brant Federal 13NA - OWB - OWB     | 500.0                           | 499.6                        | 76.2                            | 71.3                             | 15.799            | ES                            |
| Brant Federal 13NA - OWB - OWB     | 900.0                           | 897.3                        | 108.7                           | 99.2                             | 11.482            | SF                            |
| Brant Federal 13NA - OWB - Plan #1 | 157.2                           | 157.2                        | 75.1                            | 73.1                             | 36.539            | CC                            |
| Brant Federal 13NA - OWB - Plan #1 | 500.0                           | 499.6                        | 76.2                            | 71.3                             | 15.799            | ES                            |
| Brant Federal 13NA - OWB - Plan #1 | 23,459.4                        | 22,807.0                     | 1,457.0                         | 646.0                            | 1.797             | Collision Risk Procedures Re  |
| Brant Federal 14N - OWB - OWB      | 380.3                           | 380.3                        | 58.9                            | 54.8                             | 14.221            | CC                            |
| Brant Federal 14N - OWB - OWB      | 400.0                           | 399.7                        | 58.9                            | 54.6                             | 13.636            | ES                            |
| Brant Federal 14N - OWB - OWB      | 800.0                           | 796.1                        | 83.4                            | 74.8                             | 9.625             | SF                            |
| Brant Federal 14N - OWB - Plan #1  | 380.3                           | 380.3                        | 58.9                            | 54.8                             | 14.221            | CC                            |
| Brant Federal 14N - OWB - Plan #1  | 400.0                           | 399.7                        | 58.9                            | 54.6                             | 13.636            | ES                            |
| Brant Federal 14N - OWB - Plan #1  | 23,459.4                        | 23,115.8                     | 1,130.4                         | 294.4                            | 1.352             | Collision Avoidance Req., SF  |
| Brant Federal 15NA - OWB - OWB     | 384.9                           | 384.9                        | 43.4                            | 39.2                             | 10.339            | CC                            |
| Brant Federal 15NA - OWB - OWB     | 500.0                           | 499.8                        | 43.9                            | 38.8                             | 8.654             | ES                            |
| Brant Federal 15NA - OWB - OWB     | 900.0                           | 900.7                        | 66.0                            | 55.8                             | 6.460             | SF                            |
| Brant Federal 15NA - OWB - Plan #1 | 384.9                           | 384.9                        | 43.4                            | 39.2                             | 10.339            | CC                            |
| Brant Federal 15NA - OWB - Plan #1 | 500.0                           | 499.8                        | 43.9                            | 38.8                             | 8.654             | ES                            |
| Brant Federal 15NA - OWB - Plan #1 | 23,459.4                        | 22,894.9                     | 932.3                           | 164.7                            | 1.215             | Collision Avoidance Req., SF  |
| Brant Federal 16C - OWB - Plan #1  | 1,341.9                         | 1,339.4                      | 23.2                            | 13.1                             | 2.302             | CC                            |
| Brant Federal 16C - OWB - Plan #1  | 23,456.6                        | 23,321.1                     | 559.8                           | -291.6                           | 0.657             | No-Go Zone - Stop Drilling, E |
| Brant Federal 17N - OWB - OWB      | 404.5                           | 404.5                        | 13.1                            | 8.8                              | 3.050             | CC, ES                        |
| Brant Federal 17N - OWB - OWB      | 500.0                           | 499.9                        | 13.8                            | 8.9                              | 2.824             | SF                            |
| Brant Federal 17N - OWB - Plan #1  | 404.5                           | 404.5                        | 13.1                            | 8.8                              | 3.050             | CC                            |
| Brant Federal 17N - OWB - Plan #1  | 23,459.4                        | 23,220.7                     | 382.0                           | -256.4                           | 0.598             | No-Go Zone - Stop Drilling, E |
| Brant Federal 19N - OWB - Plan #1  | 204.8                           | 204.8                        | 14.8                            | 12.2                             | 5.747             | CC                            |
| Brant Federal 19N - OWB - Plan #1  | 23,459.4                        | 23,383.3                     | 320.0                           | -446.6                           | 0.417             | No-Go Zone - Stop Drilling, E |
| Brant Federal 21C - OWB - OWB      | 767.1                           | 765.9                        | 37.8                            | 31.7                             | 6.198             | CC, ES                        |
| Brant Federal 21C - OWB - OWB      | 900.0                           | 896.0                        | 45.5                            | 37.4                             | 5.636             | SF                            |
| Brant Federal 21C - OWB - Plan #1  | 4,861.4                         | 4,985.2                      | 15.3                            | -28.5                            | 0.350             | No-Go Zone - Stop Drilling, ( |

CC - Min centre to center distance or convergent point, SF - min separation factor, ES - min ellipse separation

**PDC Energy Inc.**  
Anticollision Summary Report

|                           |                   |                                     |                            |
|---------------------------|-------------------|-------------------------------------|----------------------------|
| <b>Company:</b>           | GWP - PLANNING DB | <b>Local Co-ordinate Reference:</b> | Well Brant Federal 18C     |
| <b>Project:</b>           | ADAMS COUNTY      | <b>TVD Reference:</b>               | KB 20' @ 4993.0usft        |
| <b>Reference Site:</b>    | Brant             | <b>MD Reference:</b>                | KB 20' @ 4993.0usft        |
| <b>Site Error:</b>        | 0.0 usft          | <b>North Reference:</b>             | True                       |
| <b>Reference Well:</b>    | Brant Federal 18C | <b>Survey Calculation Method:</b>   | Minimum Curvature          |
| <b>Well Error:</b>        | 0.0 usft          | <b>Output errors are at</b>         | 2.00 sigma                 |
| <b>Reference Wellbore</b> | OWB               | <b>Database:</b>                    | EDM 5000.15 Single User Db |
| <b>Reference Design:</b>  | Plan #1           | <b>Offset TVD Reference:</b>        | Offset Datum               |

| Summary                                |                                 |                              |                                 |                                  |                   |                               |
|--|---------------------------------|------------------------------|---------------------------------|----------------------------------|-------------------|-------------------------------|
| Site Name                              | Reference Measured Depth (usft) | Offset Measured Depth (usft) | Distance Between Centres (usft) | Distance Between Ellipses (usft) | Separation Factor | Warning                       |
| <b>Offset Well - Wellbore - Design</b> |                                 |                              |                                 |                                  |                   |                               |
| Brant Offsets                          |                                 |                              |                                 |                                  |                   |                               |
| Brant LE 08-039HC - OH - OH            | 152.3                           | 152.3                        | 142.3                           | 140.6                            | 81.950            | CC                            |
| Brant LE 08-039HC - OH - OH            | 500.0                           | 499.5                        | 142.7                           | 138.1                            | 30.912            | ES                            |
| Brant LE 08-039HC - OH - OH            | 21,200.0                        | 20,878.0                     | 3,787.5                         | 3,075.6                          | 5.320             | SF                            |
| Brant LE 08-039HC - ST 01 - ST 01      | 152.3                           | 152.3                        | 142.3                           | 140.6                            | 81.950            | CC                            |
| Brant LE 08-039HC - ST 01 - ST 01      | 500.0                           | 499.5                        | 142.7                           | 138.1                            | 30.912            | ES                            |
| Brant LE 08-039HC - ST 01 - ST 01      | 23,459.4                        | 23,446.5                     | 3,778.1                         | 2,934.4                          | 4.478             | SF                            |
| Brant LE 08-039HN - OH - OH            | 0.0                             | 0.0                          | 155.3                           |                                  |                   |                               |
| Brant LE 08-039HN - OH - OH            | 526.0                           | 528.0                        | 155.7                           | 150.7                            | 31.385            | ES                            |
| Brant LE 08-039HN - OH - OH            | 23,459.4                        | 23,151.5                     | 3,814.5                         | 2,975.5                          | 4.547             | SF                            |
| Brant LE 08-042HN - OH - OH            | 471.4                           | 471.4                        | 116.5                           | 112.0                            | 25.895            | CC                            |
| Brant LE 08-042HN - OH - OH            | 500.0                           | 499.7                        | 116.5                           | 111.8                            | 25.003            | ES                            |
| Brant LE 08-042HN - OH - OH            | 23,459.4                        | 23,127.0                     | 3,431.8                         | 2,592.6                          | 4.089             | SF                            |
| Brant LE 08-042HNX - OH - OH           | 0.0                             | 0.0                          | 129.0                           |                                  |                   |                               |
| Brant LE 08-042HNX - OH - OH           | 503.8                           | 504.0                        | 129.1                           | 124.4                            | 27.728            | ES                            |
| Brant LE 08-042HNX - OH - OH           | 23,459.4                        | 23,077.8                     | 3,562.0                         | 2,722.0                          | 4.240             | SF                            |
| Brant LE 08-082HC - OH - OH            | 500.9                           | 500.9                        | 95.2                            | 90.5                             | 20.103            | CC, ES                        |
| Brant LE 08-082HC - OH - OH            | 23,459.4                        | 23,308.0                     | 3,055.1                         | 2,210.0                          | 3.615             | SF                            |
| Brant LE 08-082HN - OH - OH            | 210.6                           | 210.6                        | 105.9                           | 103.4                            | 41.655            | CC                            |
| Brant LE 08-082HN - OH - OH            | 501.7                           | 501.8                        | 106.3                           | 101.6                            | 22.631            | ES                            |
| Brant LE 08-082HN - OH - OH            | 23,459.4                        | 22,982.9                     | 3,173.4                         | 2,334.7                          | 3.784             | SF                            |
| Brant LE 08-119HN - OH - OH            | 390.4                           | 390.4                        | 80.7                            | 76.7                             | 20.406            | CC                            |
| Brant LE 08-119HN - OH - OH            | 500.0                           | 499.9                        | 81.1                            | 76.4                             | 17.536            | ES                            |
| Brant LE 08-119HN - OH - OH            | 23,459.4                        | 23,040.7                     | 2,689.0                         | 1,846.5                          | 3.192             | SF                            |
| Brant LE 08-119HNX - OH - OH           | 0.0                             | 0.0                          | 87.9                            |                                  |                   |                               |
| Brant LE 08-119HNX - OH - OH           | 509.5                           | 510.0                        | 87.9                            | 83.1                             | 18.465            | ES                            |
| Brant LE 08-119HNX - OH - OH           | 23,459.4                        | 22,847.6                     | 2,817.0                         | 1,982.4                          | 3.375             | SF                            |
| Brant LE 08-159HC - OH - OH            | 0.0                             | 0.0                          | 75.1                            |                                  |                   |                               |
| Brant LE 08-159HC - OH - OH            | 504.4                           | 504.5                        | 76.4                            | 71.6                             | 15.930            | ES                            |
| Brant LE 08-159HC - OH - OH            | 23,459.4                        | 23,212.0                     | 2,332.4                         | 1,485.1                          | 2.753             | SF                            |
| Brant LE 08-159HN - OH - OH            | 103.5                           | 103.5                        | 76.5                            | 75.5                             | 78.017            | CC                            |
| Brant LE 08-159HN - OH - OH            | 503.2                           | 503.3                        | 77.0                            | 72.3                             | 16.295            | ES                            |
| Brant LE 08-159HN - OH - OH            | 23,459.4                        | 22,858.2                     | 2,424.2                         | 1,584.6                          | 2.888             | SF                            |
| Brant LE 08-162HNX - OH - OH           | 225.7                           | 225.7                        | 79.4                            | 76.7                             | 29.537            | CC                            |
| Brant LE 08-162HNX - OH - OH           | 502.4                           | 502.5                        | 79.8                            | 75.1                             | 16.887            | ES                            |
| Brant LE 08-162HNX - OH - OH           | 23,459.4                        | 22,971.7                     | 1,932.3                         | 1,090.1                          | 2.294             | SF                            |
| BRANT LE 08-359HN - OH - OH            | 0.0                             | 0.0                          | 89.8                            |                                  |                   |                               |
| BRANT LE 08-359HN - OH - OH            | 500.0                           | 499.8                        | 90.5                            | 85.8                             | 19.219            | ES                            |
| BRANT LE 08-359HN - OH - OH            | 900.0                           | 897.6                        | 120.3                           | 111.0                            | 12.964            | SF                            |
| BRANT LE 08-359HNX - OH - OH           | 524.3                           | 525.1                        | 103.0                           | 98.0                             | 20.845            | CC, ES                        |
| BRANT LE 08-359HNX - OH - OH           | 1,000.0                         | 998.7                        | 138.8                           | 128.2                            | 13.090            | SF                            |
| BRANT LE 08-362HC - OH - OH            | 185.6                           | 185.6                        | 119.6                           | 117.3                            | 53.539            | CC                            |
| BRANT LE 08-362HC - OH - OH            | 400.0                           | 399.3                        | 119.8                           | 115.8                            | 29.415            | ES                            |
| BRANT LE 08-362HC - OH - OH            | 5,200.0                         | 4,993.0                      | 1,410.6                         | 1,101.7                          | 4.567             | SF                            |
| Case #1 - OH - OH                      | 22,933.9                        | 7,696.0                      | 1,982.0                         | 1,435.7                          | 3.628             | CC                            |
| Case #1 - OH - OH                      | 23,000.0                        | 7,695.4                      | 1,983.1                         | 1,434.5                          | 3.615             | ES                            |
| Case #1 - OH - OH                      | 23,100.0                        | 7,694.4                      | 1,988.9                         | 1,437.9                          | 3.610             | SF                            |
| Conner Linde & Browning #1 - OH - OH   | 23,459.4                        | 7,735.0                      | 1,414.0                         | 1,232.8                          | 7.805             | CC, ES, SF                    |
| Marcus LD #11-361HN - OH - OH          | 7,863.3                         | 19,009.7                     | 4.5                             | -190.9                           | 0.023             | No-Go Zone - Stop Drilling, ( |
| Mattive & Sons Inc #1 - OH - OH        | 21,816.0                        | 7,690.6                      | 162.2                           | -353.9                           | 0.314             | No-Go Zone - Stop Drilling, ( |

CC - Min centre to center distance or convergent point, SF - min separation factor, ES - min ellipse separation

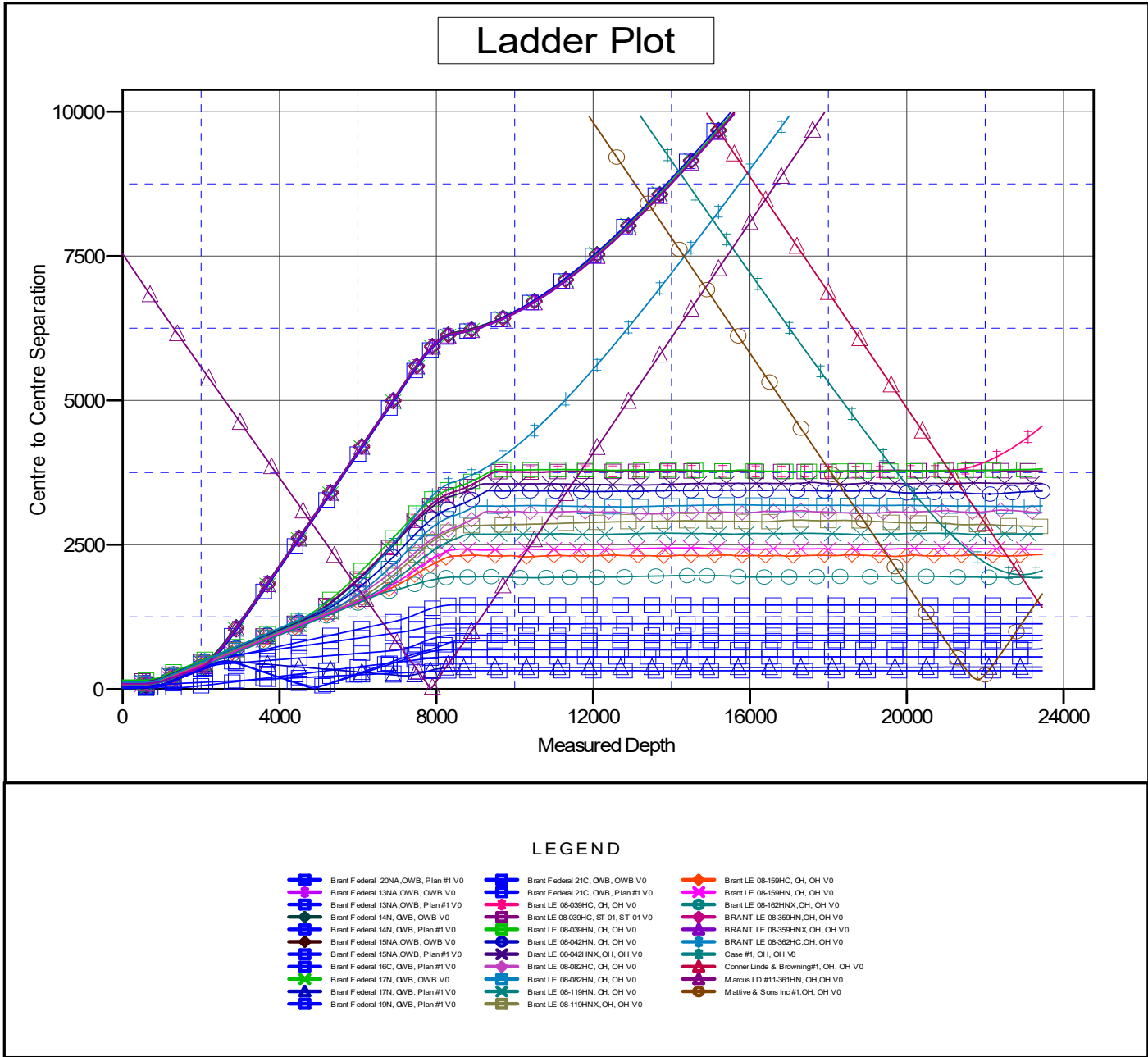
# PDC Energy Inc.

## Anticollision Summary Report

|  |  |
|--|--|
| <b>Company:</b> GWP - PLANNING DB        | <b>Local Co-ordinate Reference:</b> Well Brant Federal 18C |
| <b>Project:</b> ADAMS COUNTY             | <b>TVD Reference:</b> KB 20' @ 4993.0usft                  |
| <b>Reference Site:</b> Brant             | <b>MD Reference:</b> KB 20' @ 4993.0usft                   |
| <b>Site Error:</b> 0.0 usft              | <b>North Reference:</b> True                               |
| <b>Reference Well:</b> Brant Federal 18C | <b>Survey Calculation Method:</b> Minimum Curvature        |
| <b>Well Error:</b> 0.0 usft              | <b>Output errors are at:</b> 2.00 sigma                    |
| <b>Reference Wellbore:</b> OWB           | <b>Database:</b> EDM 5000.15 Single User Db                |
| <b>Reference Design:</b> Plan #1         | <b>Offset TVD Reference:</b> Offset Datum                  |

Reference Depths are relative to KB 20' @ 4993.0usft  
 Offset Depths are relative to Offset Datum  
 Central Meridian is 105° 30' 0.000 W

Coordinates are relative to: Brant Federal 18C  
 Coordinate System is US State Plane 1983, Colorado Northern Zone  
 Grid Convergence at Surface is: 0.42°



CC - Min centre to center distance or convergent point, SF - min separation factor, ES - min ellipse separation

# PDC Energy Inc.

## Anticollision Summary Report

|  |  |
|--|--|
| <b>Company:</b> GWP - PLANNING DB        | <b>Local Co-ordinate Reference:</b> Well Brant Federal 18C |
| <b>Project:</b> ADAMS COUNTY             | <b>TVD Reference:</b> KB 20' @ 4993.0usft                  |
| <b>Reference Site:</b> Brant             | <b>MD Reference:</b> KB 20' @ 4993.0usft                   |
| <b>Site Error:</b> 0.0 usft              | <b>North Reference:</b> True                               |
| <b>Reference Well:</b> Brant Federal 18C | <b>Survey Calculation Method:</b> Minimum Curvature        |
| <b>Well Error:</b> 0.0 usft              | <b>Output errors are at:</b> 2.00 sigma                    |
| <b>Reference Wellbore:</b> OWB           | <b>Database:</b> EDM 5000.15 Single User Db                |
| <b>Reference Design:</b> Plan #1         | <b>Offset TVD Reference:</b> Offset Datum                  |

Reference Depths are relative to KB 20' @ 4993.0usft  
 Offset Depths are relative to Offset Datum  
 Central Meridian is 105° 30' 0.000 W

Coordinates are relative to: Brant Federal 18C  
 Coordinate System is US State Plane 1983, Colorado Northern Zone  
 Grid Convergence at Surface is: 0.42°

