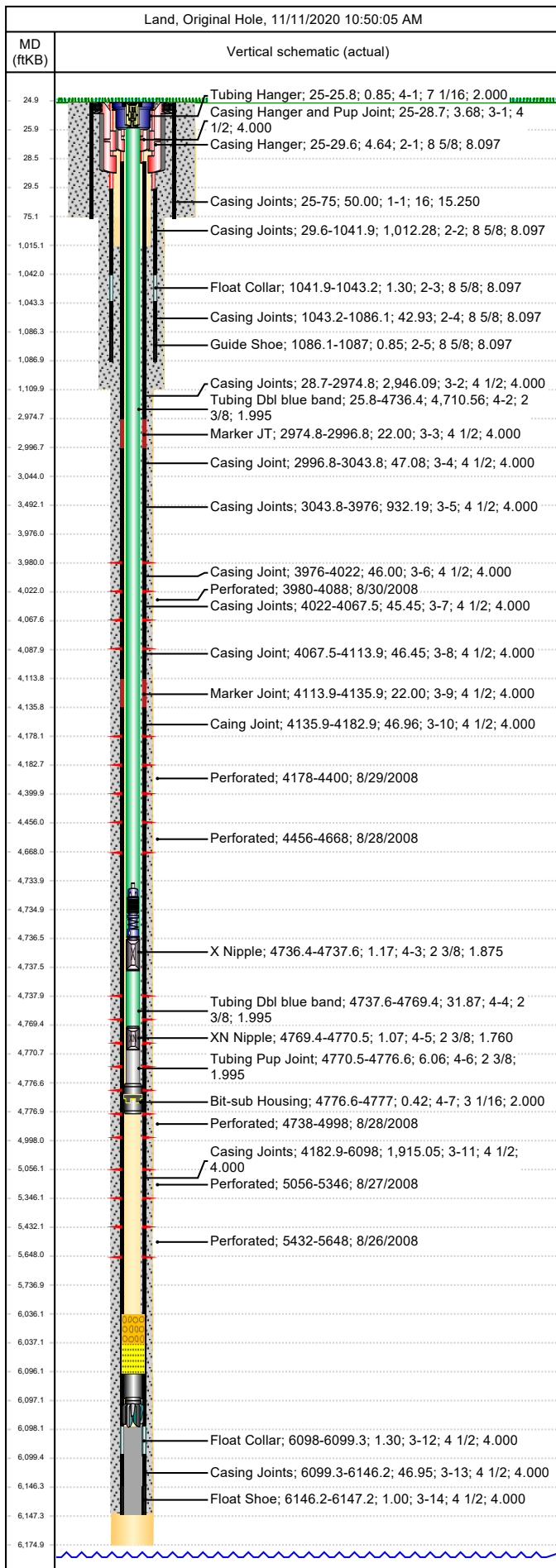




Wellbore Schematic

Well Name SKR-598-35-AV-08	Lease Chevron USA	Field Name Skinner Ridge	Business Unit Mid-Continent
-------------------------------	----------------------	-----------------------------	--------------------------------

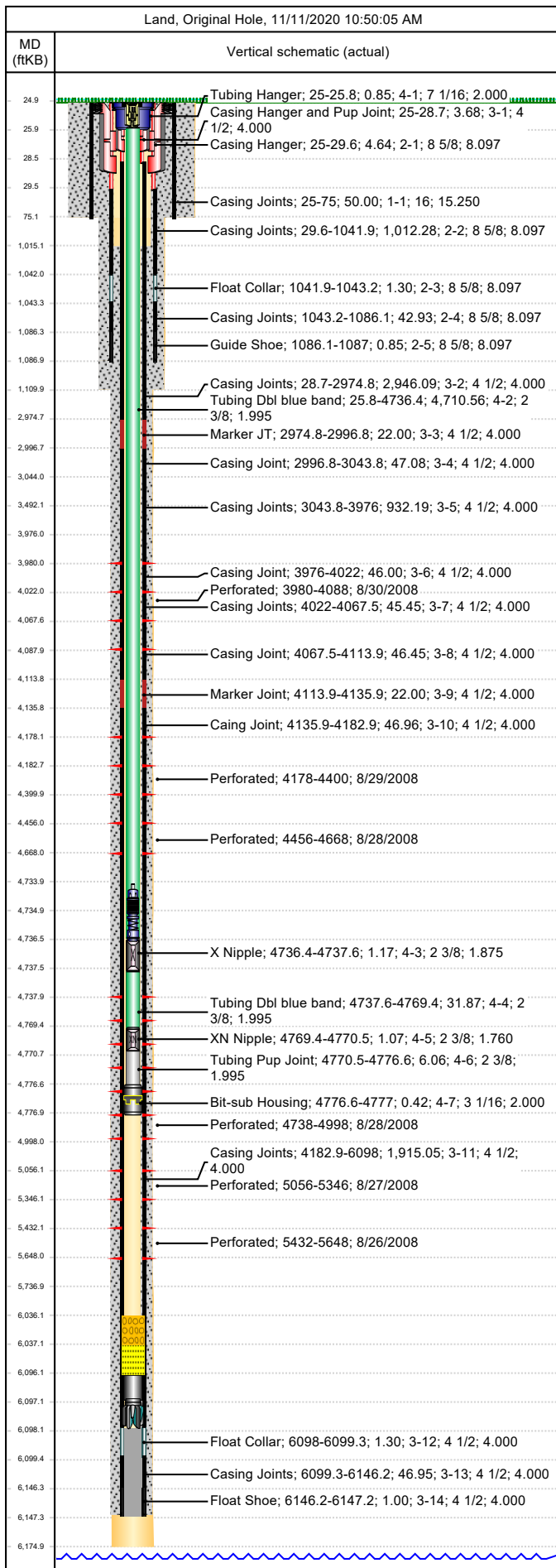


Job Details						
Job Category			Start Date		Rig/Unit End Date	
Major Rig Work Over (MRWO)			5/14/2015		5/14/2015	
Major Rig Work Over (MRWO)			5/26/2015		5/28/2015	
Casing Strings						
Csg Des	OD (in)	Wt/Len (lb/ft)	Grade	Top Thread	Set Depth (MD) (ftKB)	
Conductor	16	65.00	H-40		75	
Surface	8 5/8	24.00	K-55	ST&C	1087	
Production Casing	4 1/2	11.60	N-80	LT&C	6147.2	
Tubing Strings						
Tubing set at 4,777.0ftKB on 5/28/2015 13:00						
Tubing Description			Run Date		String Length (ft)	
Tubing			5/28/2015		4,752.00	
Item Des		Jts	OD (in)	Wt (lb/ft)	Grade	Len (ft)
Tubing Hanger		1	7 1/16		4140	0.85
Tubing Dbl blue band		150	2 3/8	4.70	L-80	4,710.56
X Nipple		1	2 3/8			1.17
Tubing Dbl blue band		1	2 3/8	4.70	L-80	31.87
XN Nipple		1	2 3/8			1.07
Tubing Pup Joint		1	2 3/8	4.70	L-80	6.06
Bit-sub Housing		1	3 1/16			0.42
Perforations						
Date	Top (ftKB)	Btm (ftKB)	Shot Dens (shots/ft)	Entered Shot Total	Linked Zone	
8/30/2008	3,980.0	4,088.0	3.0	27	Mesa Verde - WMFK - Williams Fork, Original Hole	
8/29/2008	4,178.0	4,400.0	3.0	24	Mesa Verde - WMFK - Williams Fork, Original Hole	
8/28/2008	4,456.0	4,668.0	3.0	30	Mesa Verde - WMFK - Williams Fork, Original Hole	
8/28/2008	4,738.0	4,998.0	3.0	30	Mesa Verde - WMFK - Williams Fork, Original Hole	
8/27/2008	5,056.0	5,346.0	3.0	24	Mesa Verde - WMFK - Williams Fork, Original Hole	
8/26/2008	5,432.0	5,648.0	3.0	21	Mesa Verde - WMFK - Williams Fork, Original Hole	
Other Strings						
Run Date	Pull Date	Set Depth (ftKB)	Com			
1/16/2009	5/27/2015	5,027.1	Pinnacle press. and temp. gauges with fiber Optics			
Other In Hole						
Des	Top (ftKB)	Btm (ftKB)	Run Date	Pull Date	Com	
Bridge Plug (Permanent) Fasdrill	3,860.0	3,862.0	8/31/2008	9/22/2008	Bear Claw Solid BP. Top plug	
Bridge Plug (Permanent) Fasdrill	4,108.0	4,110.0	8/30/2008	9/22/2008	Bear Claw flow thru BP	
Bridge Plug (Permanent) Fasdrill	4,420.0	4,422.0	8/29/2008	9/22/2008	Bear Claw flow thru BP	
Bridge Plug (Permanent) Fasdrill	4,688.0	4,690.0	8/28/2008	9/23/2008	Bear Claw flow thru BP	
Tubing Plunger	4,734.0	4,735.0	5/29/2015			
Bumper Spring	4,735.0	4,736.5	5/29/2015			
Tubing Plunger	4,981.2	4,982.2	11/9/2009	5/14/2015		
Bumper Spring	4,982.2	4,983.2	11/9/2009	5/14/2015		
Bridge Plug (Permanent) Fasdrill	5,018.0	5,020.0	8/28/2008	9/23/2008	Halco solid Composite BP	
Bridge Plug (Permanent) Fasdrill	5,348.0	5,350.0	8/27/2008	9/23/2008	Halco solid Composite BP	
Fill Tag, 5/14/2015	6,036.0	6,037.0	5/14/2015			
Fill (Sand / Mud / Debris)	6,037.0	6,096.0	11/9/2010			



Wellbore Schematic

Well Name SKR-598-35-AV-08	Lease Chevron USA	Field Name Skinner Ridge	Business Unit Mid-Continent
-------------------------------	----------------------	-----------------------------	--------------------------------



Other In Hole					
Des	Top (ftKB)	Btm (ftKB)	Run Date	Pull Date	Com
Pumped off	6,096.2	6,097.0	9/22/2008		KR's pumped off bit sub/fish top
Mill	6,097.0	6,098.0	9/22/2008		KR's FB mill
PBTD	6,098.0	6,147.2	9/17/2007		PBTD