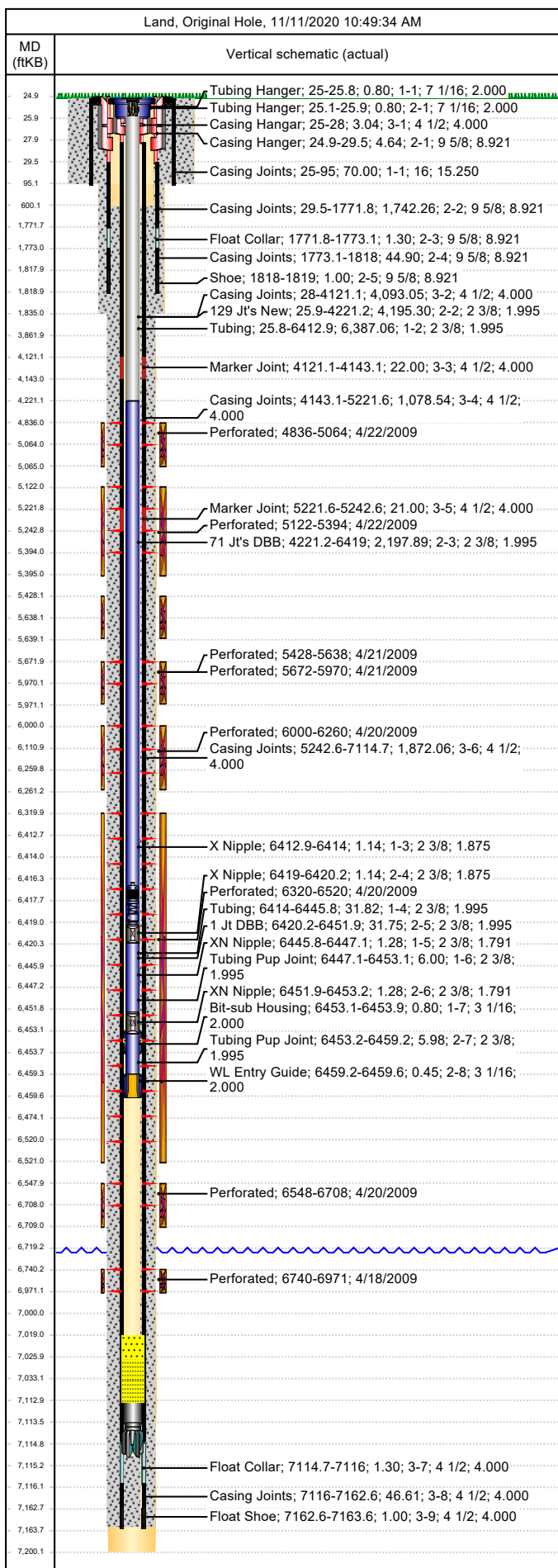




Wellbore Schematic

Well Name SKR-598-35-AV-07	Lease Chevron USA	Field Name Skinner Ridge	Business Unit Mid-Continent
-------------------------------	----------------------	-----------------------------	--------------------------------



Job Details		
Job Category	Start Date	Rig/Unit End Date
Major Rig Work Over (MRWO)	5/13/2015	5/18/2015

Casing Strings					
Csg Des	OD (in)	Wt/Len (lb/ft)	Grade	Top Thread	Set Depth (MD) (ftKB)
Conductor	16	65.00	H-40		95
Surface	9 5/8	36.00	K-55	LT&C	1819
Production Casing	4 1/2	11.60	N-80	LT&C	7163.6

Tubing Strings						
Tubing - Production set at 6,453.9ftKB on 5/14/2009 16:00						
Tubing Description	Run Date	String Length (ft)	Set Depth (MD) (ftKB)			
Tubing - Production	5/14/2009	6,428.90	6,453.9			
Item Des	Jts	OD (in)	Wt (lb/ft)	Grade	Len (ft)	Btm (ftKB)
Tubing Hanger		7 1/16		4140	0.80	25.8
Tubing	202	2 3/8	4.70	L-80	6,387.06	6,412.9
X Nipple		2 3/8			1.14	6,414.0
Tubing	1	2 3/8	4.70	L-80	31.82	6,445.8
XN Nipple		2 3/8			1.28	6,447.1
Tubing Pup Joint		2 3/8	4.70	L-80	6.00	6,453.1
Bit-sub Housing		3 1/16			0.80	6,453.9

Tubing - Production set at 6,459.6ftKB on 5/15/2015 18:30						
Tubing Description	Run Date	String Length (ft)	Set Depth (MD) (ftKB)			
Tubing - Production	5/15/2015	6,434.59	6,459.6			
Item Des	Jts	OD (in)	Wt (lb/ft)	Grade	Len (ft)	Btm (ftKB)
Tubing Hanger	1	7 1/16		4140	0.80	25.9
129 Jt's New	129	2 3/8	4.70	L-80	4,195.30	4,221.2
71 Jt's DBB	71	2 3/8	4.70	L-80	2,197.89	6,419.0
X Nipple	1	2 3/8			1.14	6,420.2
1 Jt DBB	1	2 3/8	4.70	L-80	31.75	6,451.9
XN Nipple	1	2 3/8			1.28	6,453.2
Tubing Pup Joint	1	2 3/8	4.70	L-80	5.98	6,459.2
WL Entry Guide	1	3 1/16			0.45	6,459.6

Perforations					
Date	Top (ftKB)	Btm (ftKB)	Shot Dens (shots/ft)	Entered Shot Total	Linked Zone
4/22/2009	4,836.0	5,064.0	3.0	30	Mesa Verde - WMFK - Williams Fork, Original Hole
4/22/2009	5,122.0	5,394.0	3.0	30	Mesa Verde - WMFK - Williams Fork, Original Hole
4/21/2009	5,428.0	5,638.0	3.0	27	Mesa Verde - WMFK - Williams Fork, Original Hole
4/21/2009	5,672.0	5,970.0	3.0	27	Mesa Verde - WMFK - Williams Fork, Original Hole
4/20/2009	6,000.0	6,260.0	3.0	30	Mesa Verde - WMFK - Cameo Coal, Original Hole
4/20/2009	6,320.0	6,520.0	3.0	30	Mesa Verde - Iles - Rollins, Original Hole
4/20/2009	6,548.0	6,708.0	3.0	30	Mesa Verde - Iles - Cozette, Original Hole
4/18/2009	6,740.0	6,971.0	3.0	30	Mesa Verde - Iles - Corcoran, Original Hole

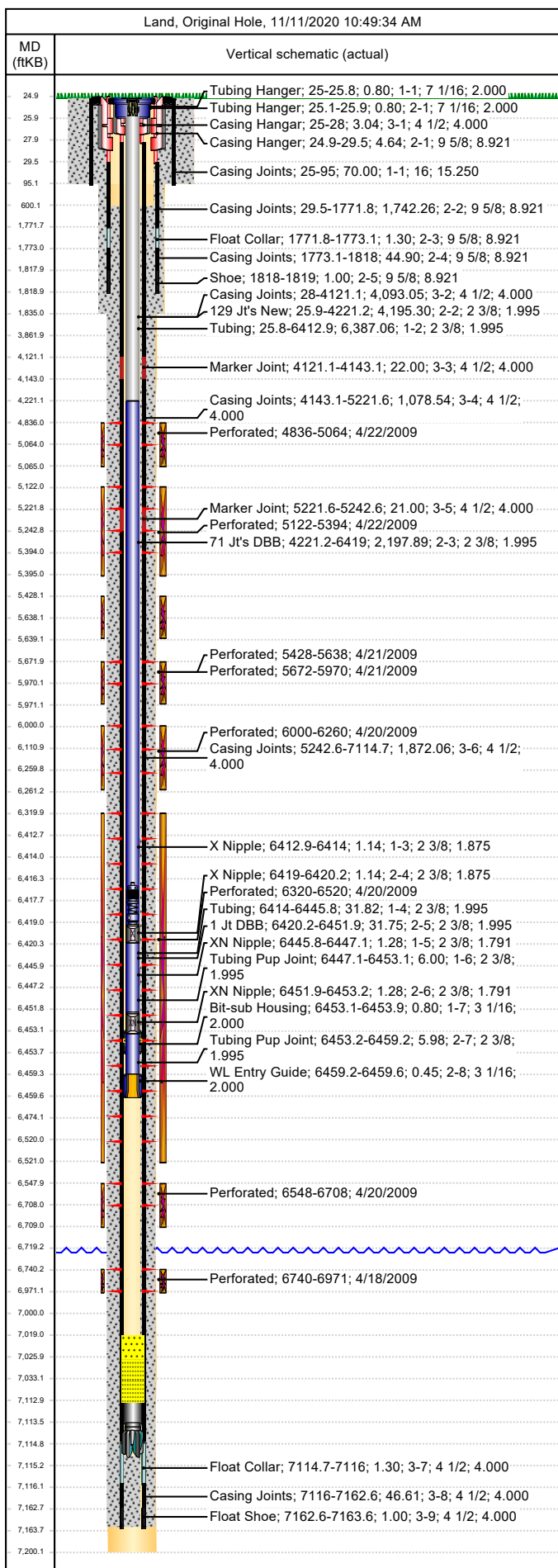
Other Strings			
Run Date	Pull Date	Set Depth (ftKB)	Com

Other In Hole					
Des	Top (ftKB)	Btm (ftKB)	Run Date	Pull Date	Com
Bear Claw top BP	4,710.0	4,712.0	5/6/2009	5/13/2009	Composite solid BP.
Bear Claw (5 day) top BP	4,806.0	4,808.0	4/22/2009	5/13/2009	5- Day) Bio Ball composite, flow thru, frac/top BP.
Bear Claw Frac Plug	5,100.0	5,102.0	4/22/2009	5/13/2009	Bio Ball composite, flow thru, frac, bridge plug
Bear Claw Frac Plug	5,411.0	5,413.0	4/22/2009	5/13/2009	Bio Ball composite, flow thru, frac, bridge plug
Bear Claw Frac Plug	5,660.0	5,662.0	4/21/2009	5/13/2009	Bio Ball composite, flow thru, frac, bridge plug



Wellbore Schematic

Well Name SKR-598-35-AV-07	Lease Chevron USA	Field Name Skinner Ridge	Business Unit Mid-Continent
-------------------------------	----------------------	-----------------------------	--------------------------------



Other In Hole					
Des	Top (ftKB)	Btm (ftKB)	Run Date	Pull Date	Com
Bear Claw Frac Plug	5,985.0	5,987.0	4/21/2009	5/13/2009	Bio Ball composite, flow thru, frac, bridge plug
Bear Claw Frac Plug	6,300.0	6,302.0	4/20/2009	5/14/2009	Bio Ball composite, flow thru, frac, bridge plug
Gas Lift Valve Catcher / Tubing Stop	6,409.5	6,410.5	1/18/2010	5/3/2010	
Gas Lift Valve Spring	6,410.5	6,412.5	1/18/2010	5/3/2010	
Tubing Plunger	6,416.5	6,417.5	5/29/2015		
Bumper Spring	6,417.5	6,419.0	5/29/2015		
Bear Claw Frac Plug	6,534.0	6,536.0	4/20/2009	5/14/2009	Bio Ball composite, flow thru, frac, bridge plug
Bear Claw Frac Plug	6,724.0	6,726.0	4/20/2009	5/14/2009	Bio Ball composite, flow thru, frac, bridge plug
Fill tag, 5/14/2015	7,019.0	7,026.0	5/14/2015		Tag w/ slickline, 5/03/2010
Fill (Sand / Mud / Debris)	7,026.0	7,033.0	5/3/2010		Tag w/ slickline, 1/18/10
Fill (Sand / Mud / Debris)	7,033.0	7,112.7	1/18/2010		
Pumped off	7,112.7	7,113.5	5/14/2009		
Mill	7,113.5	7,115.0	5/14/2009		Bit - sub w/ 3 7/8" mill