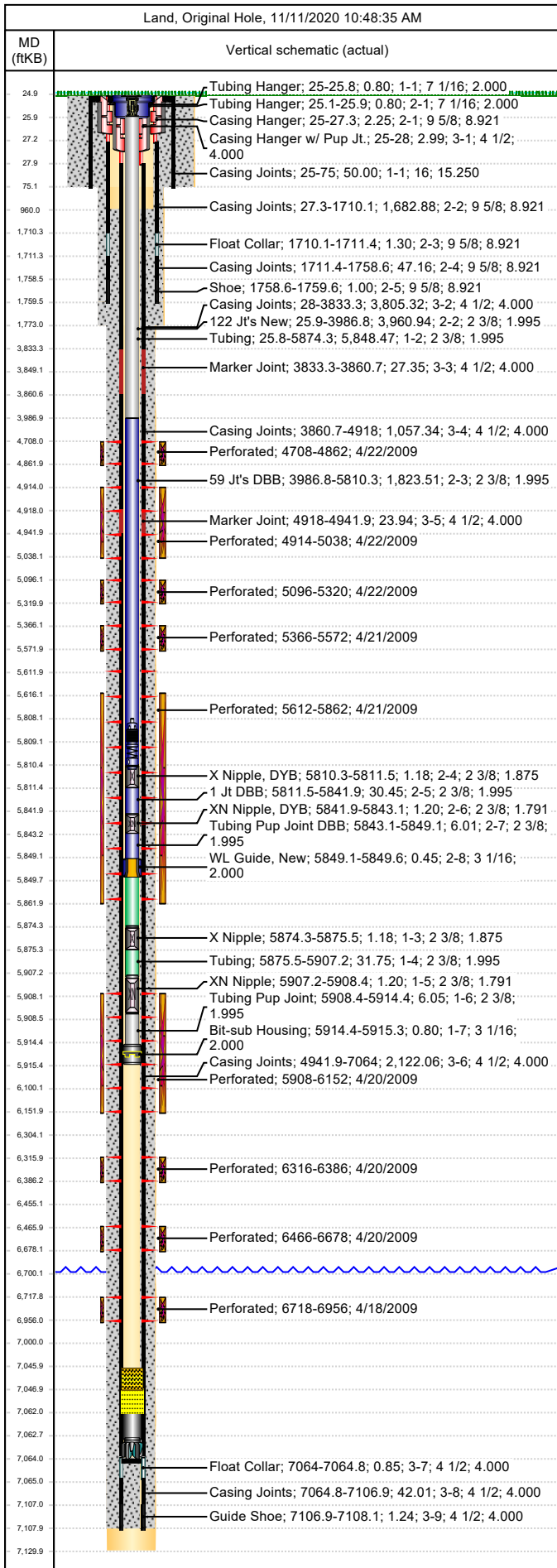




Wellbore Schematic

Well Name SKR-598-35-AV-05	Lease Chevron USA	Field Name Skinner Ridge	Business Unit Mid-Continent
-------------------------------	----------------------	-----------------------------	--------------------------------

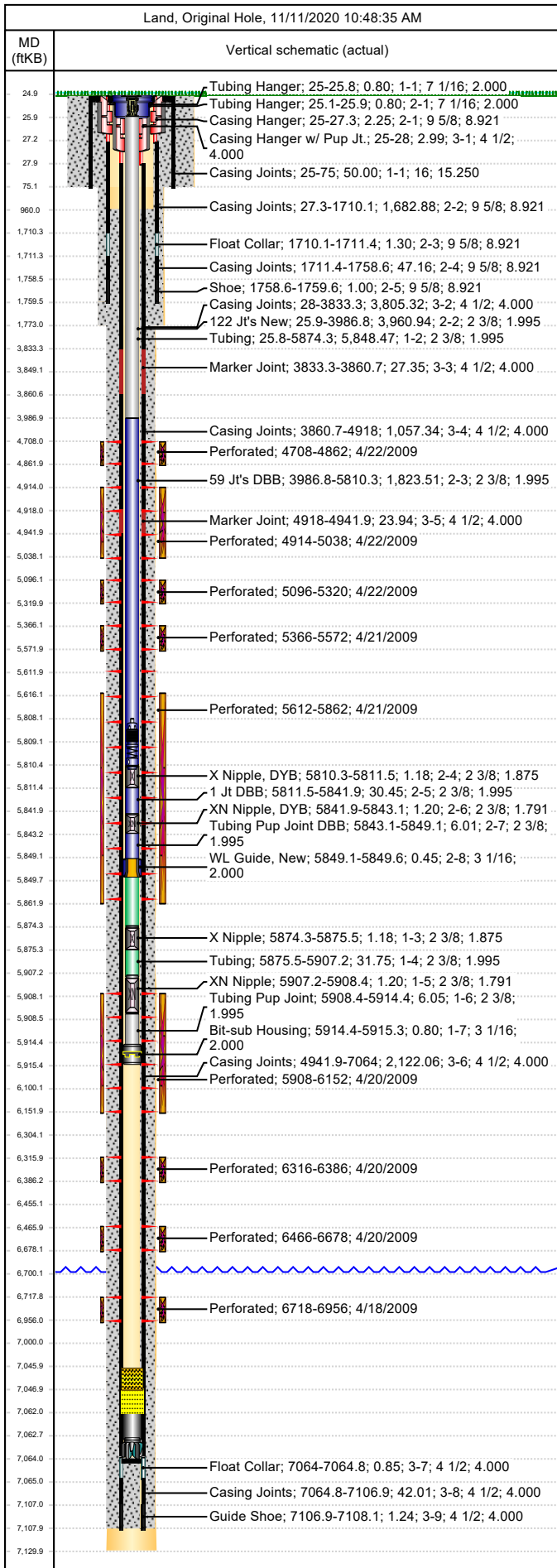


Job Details						
Job Category			Start Date		Rig/Unit End Date	
Major Rig Work Over (MRWO)			5/18/2015		5/21/2015	
Casing Strings						
Csg Des	OD (in)	Wt/Len (lb/ft)	Grade	Top Thread	Set Depth (MD) (ftKB)	
Conductor	16				75	
Surface	9 5/8	36.00	K-55	LT&C	1759.6	
Production Casing	4 1/2	11.60	N-80	LTC	7108.1	
Tubing Strings						
Tubing - Production set at 5,915.3ftKB on 5/12/2009 12:00						
Tubing Description			Run Date		String Length (ft)	
Tubing - Production			5/12/2009		5,890.25	
Item Des		Jts	OD (in)	Wt (lb/ft)	Grade	Len (ft)
Tubing Hanger			7 1/16		4140	0.80
Tubing		185	2 3/8	4.70	L-80	5,848.47
X Nipple			2 3/8			1.18
Tubing		1	2 3/8	4.70	L-80	31.75
XN Nipple			2 3/8			1.20
Tubing Pup Joint			2 3/8	4.70	L-80	6.05
Bit-sub Housing			3 1/16			0.80
Tubing - Production set at 5,849.6ftKB on 5/20/2015 16:30						
Tubing Description			Run Date		String Length (ft)	
Tubing - Production			5/20/2015		5,824.54	
Item Des		Jts	OD (in)	Wt (lb/ft)	Grade	Len (ft)
Tubing Hanger		1	7 1/16		4140	0.80
122 Jt's New		122	2 3/8	4.70	L-80	3,960.94
59 Jt's DBB		59	2 3/8	4.70	L-80	1,823.51
X Nipple, DYB		1	2 3/8			1.18
1 Jt DBB		1	2 3/8	4.70	L-80	30.45
XN Nipple, DYB		1	2 3/8			1.20
Tubing Pup Joint DBB		1	2 3/8	4.70	L-80	6.01
WL Guide, New		1	3 1/16			0.45
Perforations						
Date	Top (ftKB)	Btm (ftKB)	Shot Dens (shots/ft)	Entered Shot Total	Linked Zone	
4/22/2009	4,708.0	4,862.0	3.0	27	Mesa Verde - WMFK - Williams Fork, Original Hole	
4/22/2009	4,914.0	5,038.0	3.0	27	Mesa Verde - WMFK - Williams Fork, Original Hole	
4/22/2009	5,096.0	5,320.0	3.0	30	Mesa Verde - WMFK - Williams Fork, Original Hole	
4/21/2009	5,366.0	5,572.0	3.0	30	Mesa Verde - WMFK - Williams Fork, Original Hole	
4/21/2009	5,612.0	5,862.0	3.0	24	Mesa Verde - WMFK - Williams Fork, Original Hole	
4/20/2009	5,908.0	6,152.0	3.0	27	Mesa Verde - WMFK - Cameo Coal, Original Hole	
4/20/2009	6,316.0	6,386.0	3.0	24	Mesa Verde - Iles - Rollins, Original Hole	
4/20/2009	6,466.0	6,678.0	3.0	27	Mesa Verde - Iles - Cozzette, Original Hole	
4/18/2009	6,718.0	6,956.0	3.0	24	Mesa Verde - Iles - Corcoran, Original Hole	
Other Strings						
Run Date	Pull Date	Set Depth (ftKB)	Com			
Other In Hole						
Des	Top (ftKB)	Btm (ftKB)	Run Date	Pull Date	Com	
Bear Claw Comp BP	4,618.0	4,620.0	4/22/2009	5/8/2009	Top solid Comp BP, for well control/NU.	
Bear Claw (5-day) top BP	4,668.0	4,670.0	5/6/2009	5/8/2009	5- Day) Bio Ball composite, flow thru, frac/top BP.	
Bear Claw Frac Plug	4,888.0	4,890.0	4/22/2009	5/8/2009	Bio Ball composite, flow thru, frac, bridge plug	



Wellbore Schematic

Well Name SKR-598-35-AV-05	Lease Chevron USA	Field Name Skinner Ridge	Business Unit Mid-Continent
-------------------------------	----------------------	-----------------------------	--------------------------------



Other In Hole					
Des	Top (ftKB)	Btm (ftKB)	Run Date	Pull Date	Com
Bear Claw Frac Plug	5,065.0	5,067.0	4/22/2009	5/8/2009	Bio Ball composite, flow thru, frac, bridge plug
Bear Claw Frac Plug	5,343.0	5,345.0	4/22/2009	5/11/2009	Bio Ball composite, flow thru, frac, bridge plug
Bear Claw Frac Plug	5,597.0	5,599.0	4/21/2009	5/11/2009	Bio Ball composite, flow thru, frac, bridge plug
Tubing Plunger	5,808.0	5,809.0	5/25/2015		
Bumper Spring	5,809.0	5,810.5	5/25/2015		
Tubing Plunger	5,872.2	5,873.2	11/10/2009	5/18/2015	Actual pull date 5/14/2015 13:00
Bumper Spring	5,873.2	5,874.2	11/10/2009	5/18/2015	Actual pull date 5/14/2015 13:30
Bear Claw Frac Plug	5,885.0	5,887.0	4/21/2009	5/11/2009	Bio Ball composite, flow thru, frac, bridge plug
Bear Claw Frac Plug	6,239.0	6,241.0	4/20/2009	5/11/2009	Bio Ball composite, flow thru, frac, bridge plug
Bear Claw Frac Plug	6,426.0	6,428.0	4/20/2009	5/11/2009	Bio Ball composite, flow thru, frac, bridge plug
Bear Claw Frac Plug	6,698.0	6,700.0	4/20/2009	5/11/2009	Bio Ball composite, flow thru, frac, bridge plug
Fill Tag, 5/14/2015	7,046.0	7,047.0	5/14/2015		
Fill (Sand / Mud / Debris)	7,047.0	7,062.0	11/10/2009		
Pumped off	7,062.0	7,062.8	5/12/2009		
Mill	7,062.8	7,064.0	5/12/2009		