

Construction and Stormwater Inspection

August 9, 2022

Operator: AXIS EXPLORATION LLC -#10646

Location ID: 454144

Inspection Document #: 697504110

Arapahoe County, CO

SWNW Section 4 T4S R65W

Chris Binschus
Reclamation Specialist, COGCC



COLORADO

**Oil & Gas Conservation
Commission**

Department of Natural Resources

Inspection Photos
Location Name: Jamaso /4-65
Location ID: 474389



Photo 1. Photo taken from the entrance of location. Photo illustrates a mailbox to comply with 406.c. with the required paperwork.



Photo 2. Photo taken from the entrance of location. Photo illustrates the Operator signage.



COLORADO
Oil & Gas Conservation
Commission

Department of Natural Resources

Inspection Number: 697504110

Inspection Photos
Location Name: Jamaso /4-65
Location ID: 474389



Photo 3. Photo taken from the entrance of location, facing North. Photo illustrates there was no observed vehicle track out.



Photo 4. Photo taken from the entrance of location, facing South. See comments under Photo 3.

Inspection Photos
Location Name: Jamaso /4-65
Location ID: 474389



Photo 5. Photo taken from the entrance of location, facing East. Photo illustrates the VTC devices and the stabilized access road.

Inspection Photos
Location Name: Jamaso /4-65
Location ID: 474389



Photo 6. Photo taken from the entrance of location, facing South. Photo illustrates the retention pond with the contractor performing an inspection.



Photo 7. Photo taken from the southwestern location, facing North. See comments under Photo 6. Also, the photo illustrates the location is stabilized with road base.



COLORADO
Oil & Gas Conservation
Commission

Department of Natural Resources

Inspection Number: 697504110

Inspection Photos
Location Name: Jamaso /4-65
Location ID: 474389



Photo 8. Photo taken from the southern location where it transects with a drainage flowing to First Creek, facing East. Photo illustrates the area has been straw crimped with mulch and seeded.



Photo 9. Photo taken from the southern location where it transects with a drainage flowing to First Creek, facing Northeast. Photo illustrates the Operator has installed engineered culverts to not impede channelized flow into First Creek.

Inspection Photos
Location Name: Jamaso /4-65
Location ID: 474389



Photo 10. Photo taken from the outlet of the engineered culvert, facing West. Photo illustrates portions of the cut slope have been stabilized with erosion control blankets.



Photo 11. Photo taken from the outlet of the engineered culvert, facing South. Photo illustrates another retention area for the eastern portion of the location.



COLORADO
Oil & Gas Conservation
Commission

Department of Natural Resources

Inspection Number: 697504110

Inspection Photos
Location Name: Jamaso /4-65
Location ID: 474389



Photo 12. Photo taken from the drainage crossing, facing East. Photo illustrates topsoil has been stockpiled along the eastern perimeter of location.



Photo 13. Photo taken from the eastern location, facing Southeast. Photo illustrates the topsoil stockpile has been straw crimped with mulch and seeded.

Inspection Photos
Location Name: Jamaso /4-65
Location ID: 474389

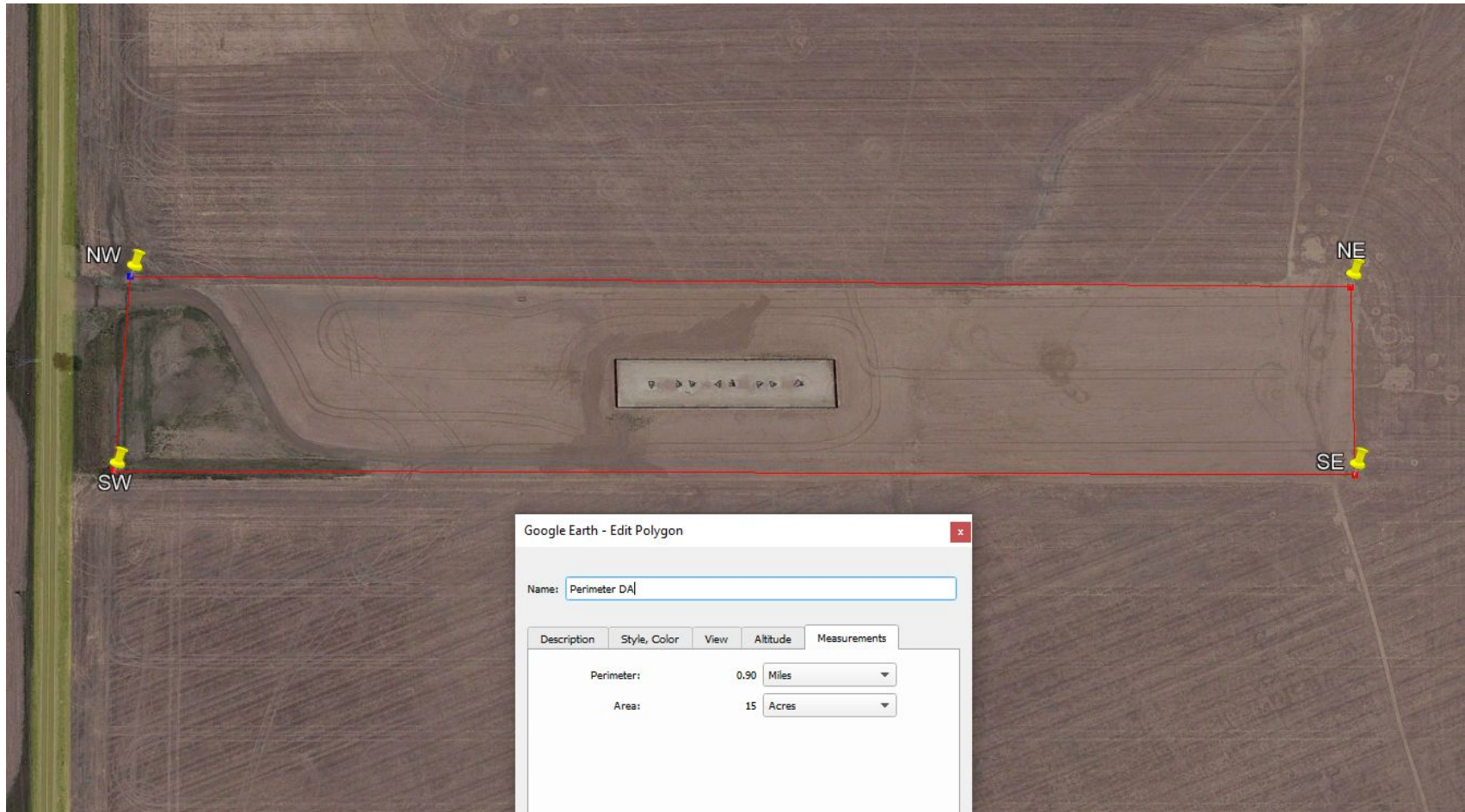


Photo 14. Google Earth aerial from 6/10/2021 illustrates field collected data using a Trimble handheld gps. The approximate area of disturbance is 15 acres.