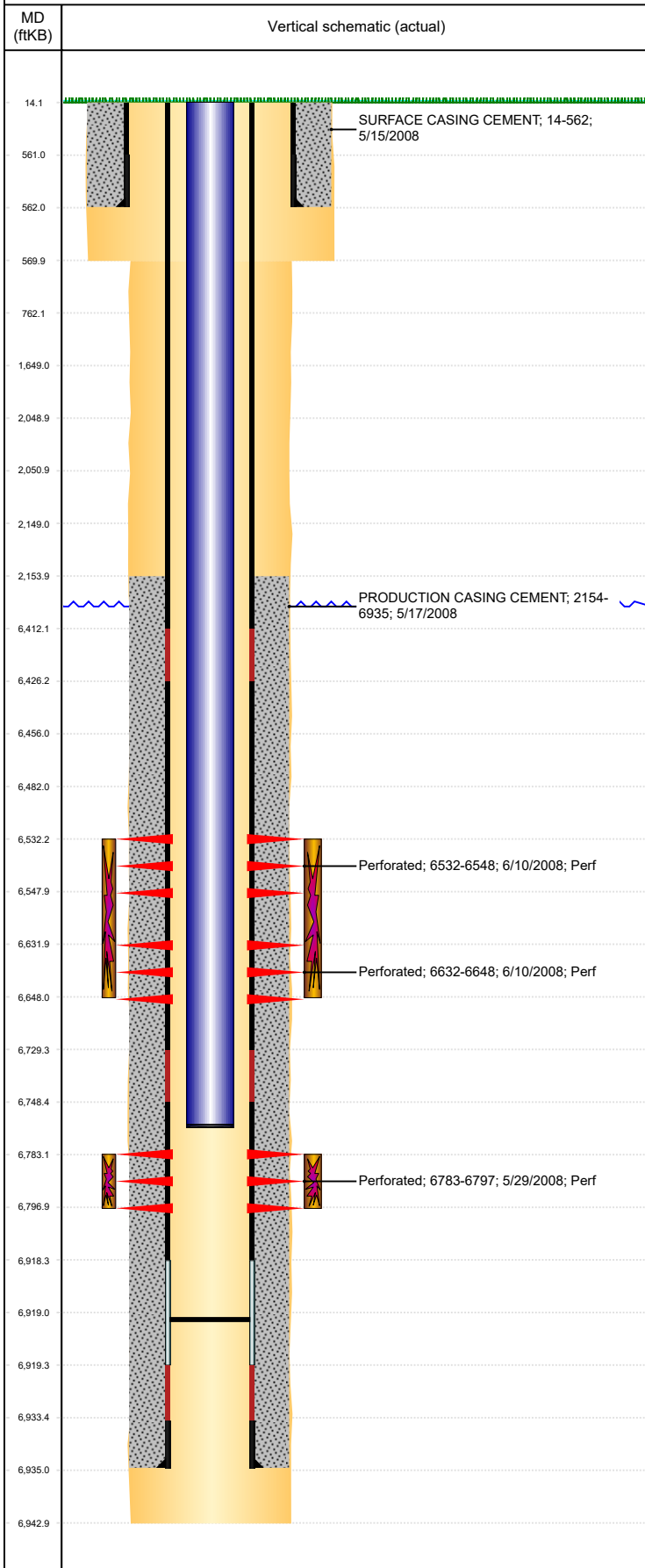




P&A Wellbore For State

Well Name: PATRIOT B16-24

Land, Original Hole, 8/23/2022 10:13:46 AM



Well Header									
Surface UWI 0512325730			Business Unit Rockies			Gov Auth Dist		Prod Tree Loc Land	
Orig. KB to Gnd (ft) 14.00		Original Spud Date 5/14/2008		Abandon Date		Well Sub-Status SI			High... N
Comment									
Surface Location (Congressional)									
Qtr 3 SE	Qtr 4 SW	Section 16	Twonshp 5	Twonsh... N	Range 64	Rng E/... W	Latitude (°) 40.39543984 9	Longitude (°) -104.555204335	
Wellbore Sections									
Section Des			Hole Size (in)			Act Top (ftKB)		Act Btm (ftKB)	
SURFACE			12 1/4			14.0		570.0	
PRODUCTION			7 7/8			570.0		6,943.0	
Casing Strings									
Csg Des			Run Date		OD (in)	Wt/Len (lb/ft)	Grade	Top Depth (MD) (ftKB)	Set Depth (MD) (ftKB)
Surface			5/15/2008		8 5/8	24.00	J-55	14	562
Production Casing			5/17/2008		4 1/2	11.60	M-80	14	6935
Cement									
Des					Start Date		Top (ftKB)		Btm (ftKB)
SURFACE CASING CEMENT					5/15/2008		14.0		562.0
PRODUCTION CASING CEMENT					5/17/2008		2,154.0		6,935.0
Zone Statuses									
Zone Name		Status Date	Status	Fluid Type	Job			Prod Method	
NIOBRARA		6/11/2008	PR	Gas	DRILLING/COMPLETION - ORIGINAL, 5/13/2008...			Flowing Flowing	
NIOBRARA		6/1/2009	PR	Water					
CODELL		6/1/2009	PR	Water					
CODELL		5/9/2017	SI						
Perforation Data									
Linked Zone			Explosive Type	Entered Shot Total	Top (ftKB)		Btm (ftKB)		Date
NIOBRARA, Original Hole			A	64	6,532.0		6,548.0		6/10/2008
NIOBRARA, Original Hole			B	64	6,632.0		6,648.0		6/10/2008
CODELL, Original Hole				56	6,783.0		6,797.0		5/29/2008
Stimulation Intervals									
Zone				Start Date		Top (ftKB)		Btm (ftKB)	
NIOBRARA, Original Hole				6/10/2008		6,532.0		6,648.0	
CODELL, Original Hole				6/10/2008		6,783.0		6,797.0	
Other In Hole									
Run Date		Des			Make		OD (in)	Top (ftKB)	Btm (ftKB)
Logs									
Date		Type					Depth Top (MD) (ftKB)		Btm (ftKB)
5/17/2008		Caliper/Comp. Density/Neutron/GR/SP/ML					2,500		6,920.0
5/17/2008		DIL/GR/SP/Caliper					563		6,940.0
5/23/2008		CBL/CCL/GR					1,950		6,880.0
12/21/2010		GYRO					14		6,700.0
Plug Back Total Depths									
Date		Type			Com				PBTD (ftKB)
5/17/2008		FLOAT COLLAR							6,919