

Inspection Photos and Issue Report

8/17/2022

Operator: CAERUS PICEANCE LLC #10456

Location #467272

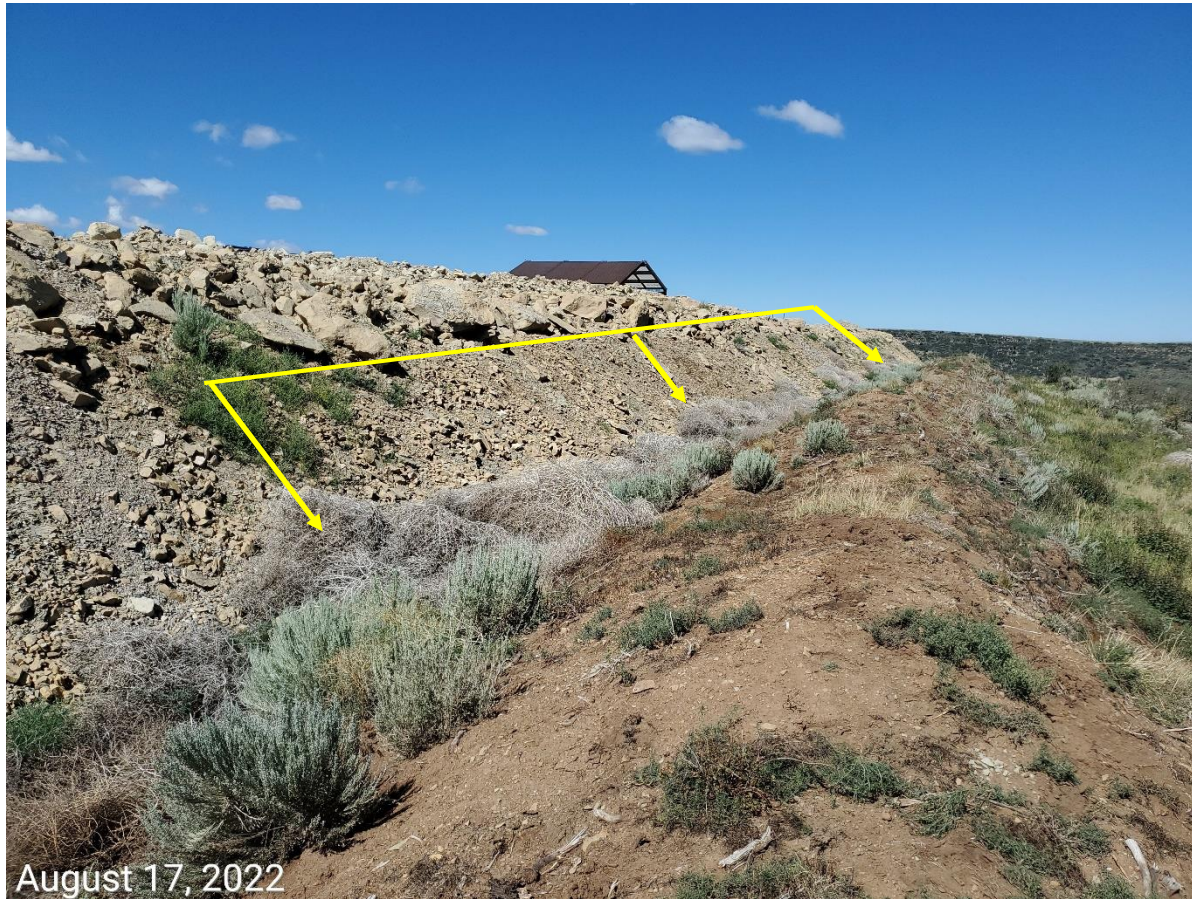
Rio Blanco County, CO

Aaron Trujillo

NW Reclamation Specialist

COGCC

Inspection Photos
Operator Name: CAERUS PICEANCE LLC #10456
Location #467272



August 17, 2022

Photo 1: Photo taken from the north end of the Location. Photo shows topsoil stockpile in use as part of the perimeter stormwater ditch/berm leading from the sediment trap/basin; topsoil stockpile predominantly bare/exposed; BMPs to protect topsoil remain missing or insufficient. Photo also shows weed debris accumulation within the ditch has not been removed (arrow).

Inspection Photos
Operator Name: CAERUS PICEANCE LLC #10456
Location #467272



Photo 2: Photo example showing the topsoil stockpile in use as part of the perimeter stormwater ditch/berm; photo also shows weed establishment on the topsoil; BMPs to protect topsoil remain missing or insufficient.

Inspection Photos
Operator Name: CAERUS PICEANCE LLC #10456
Location #467272

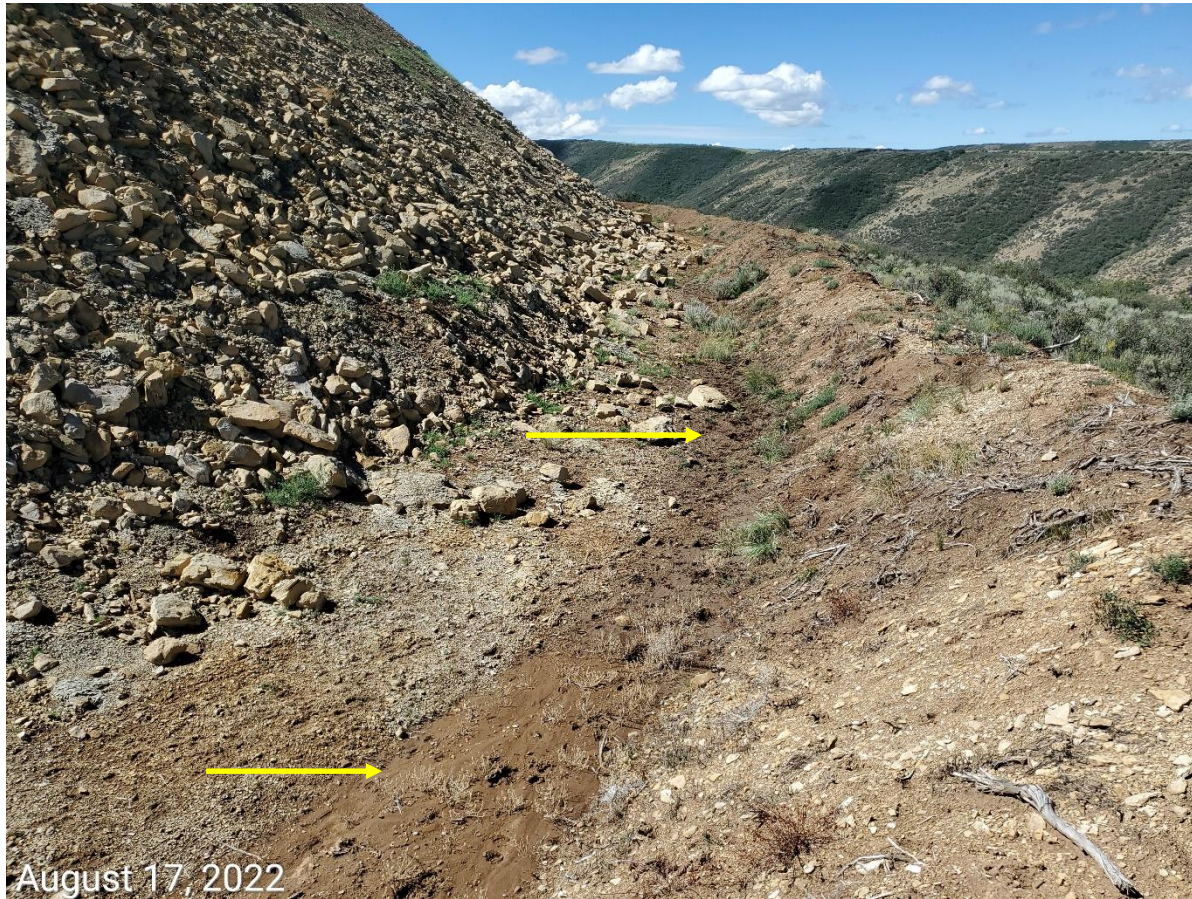


Photo 3: Photo example showing the topsoil stockpile in use as part of the perimeter stormwater ditch/berm. Photo also shows water movement patterns due to stormwater runoff (arrow) that has resulted in sediment transport, deposition and ponding along the stockpile. Photo also example showing soils at the stockpile remain bare; BMPs to protect soils remain missing or insufficient.

Inspection Photos
Operator Name: CAERUS PICEANCE LLC #10456
Location #467272



Photo 4: Photo example showing the topsoil stockpile in use as part of the perimeter stormwater ditch/berm. Photo also shows water movement patterns due to stormwater runoff (arrow) that has resulted in sediment transport, deposition (red arrow) and ponding along the stockpile. Photo also example showing soils at the stockpile remain bare; BMPs to protect soils remain missing or insufficient.

Inspection Photos
Operator Name: CAERUS PICEANCE LLC #10456
Location #467272

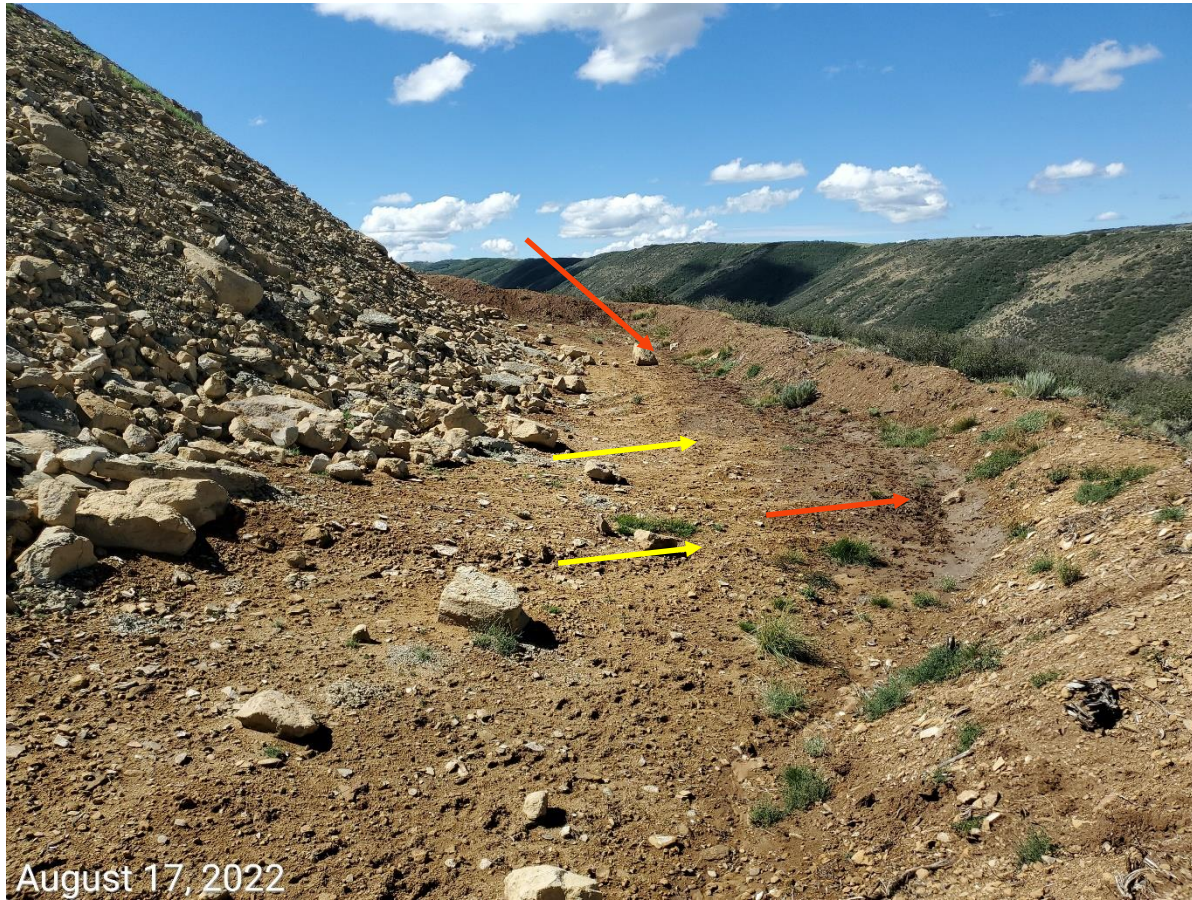


Photo 5: Photo example showing the topsoil stockpile in use as part of the stormwater sediment trap/basin on the west end of the Location. Photo also shows water movement patterns (yellow arrow) due to stormwater runoff that has resulted in sediment transport/deposition and ponding (red arrow) along the stockpile. Photo also example showing topsoil stockpiles remain bare/exposed soil; BMPs to protect soils remain missing or insufficient.

Inspection Photos
Operator Name: CAERUS PICEANCE LLC #10456
Location #467272



Photo 6: Photo taken from the west end of the Location. Photo shows topsoil stockpile in use as part of the stormwater sediment trap/basin. Photo shows evidence of stormwater runoff, ponding, and sediment transport/deposition along the stockpiles. Photo also example showing topsoil stockpiles remain bare/exposed soil; BMPs to protect soils remain missing or insufficient.

Inspection Photos
Operator Name: CAERUS PICEANCE LLC #10456
Location #467272



Photo 7: Photo taken from the west end of the Location. Photo shows topsoil stockpile in use as part of the stormwater sediment trap/basin. Photo shows evidence of stormwater runoff, ponding, and sediment transport/deposition along the stockpiles. Photo also example showing topsoil stockpiles remain bare/exposed soil; BMPs to protect soils remain missing or insufficient.

Inspection Photos
Operator Name: CAERUS PICEANCE LLC #10456
Location #467272

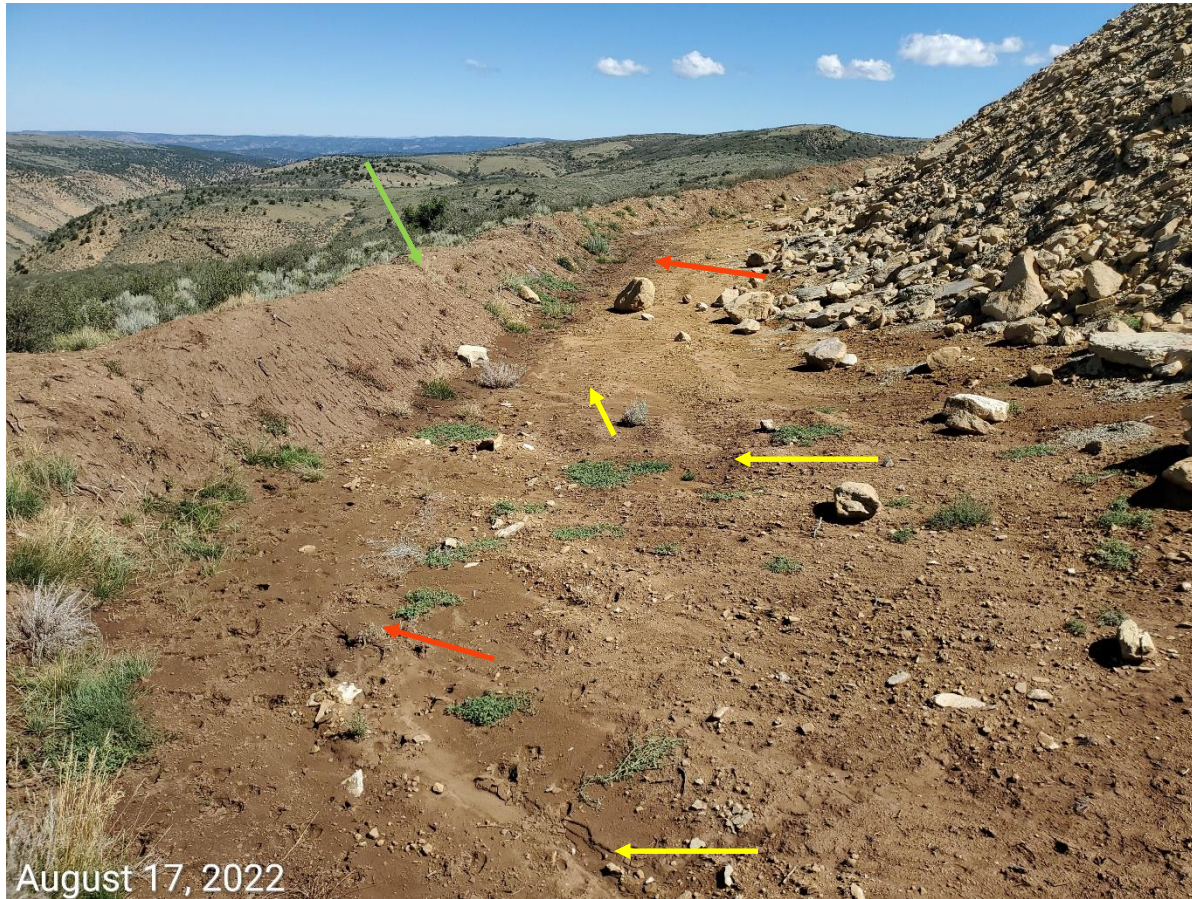


Photo 8: Photo taken from the west end of the Location. Photo shows topsoil stockpile (green arrow) in use as part of the stormwater sediment trap/basin. Photo also shows water movement patterns (yellow arrow) due to stormwater runoff that has resulted in sediment transport/deposition and ponding (red arrow) along the stockpile. Photo also example showing topsoil stockpiles remain bare/exposed soil; BMPs to protect soils remain missing or insufficient.

Inspection Photos
Operator Name: CAERUS PICEANCE LLC #10456
Location #467272



Photo 9: Photo example showing topsoil stockpiles along perimeter of the Location remain bare and exposed; BMPs to protect topsoil remains missing or insufficient; erosion degradation evident.

Inspection Photos
Operator Name: CAERUS PICEANCE LLC #10456
Location #467272



Photo 10: Photo example showing topsoil stockpiles along perimeter of the Location remain bare and exposed; BMPs to protect topsoil remains missing or insufficient; erosion degradation evident.

Inspection Photos
Operator Name: CAERUS PICEANCE LLC #10456
Location #467272



Photo 11: Photo example showing topsoil stockpiles along perimeter of the Location remain bare and exposed; BMPs to protect topsoil remains missing or insufficient; erosion degradation evident.

Inspection Photos
Operator Name: CAERUS PICEANCE LLC #10456
Location #467272



Photo 12: Photo shows erosion degradation/sediment transport observed at the topsoil stockpile.

Inspection Photos
Operator Name: CAERUS PICEANCE LLC #10456
Location #467272



Photo 13: Photo example showing the topsoil stockpile in use as part of the perimeter stormwater ditch/berm and sediment trap/basin. Photo also example soils remain bare; BMPs to protect soils remain missing or insufficient.

Inspection Photos
Operator Name: CAERUS PICEANCE LLC #10456
Location #467272



Photo 14: Photo example showing a single row of straw wattle erosion log in place along perimeter of the Location. BMP appears to have exceeded its manufactured life span and does not appear to be maintained; wattle in disrepair along sections; offsite sediment transport and deposition on top of wattles apparent (arrow).

Inspection Photos
Operator Name: CAERUS PICEANCE LLC #10456
Location #467272



Photo 15: Photos taken from the sediment trap/basin on the south end of the Location. Photo shows inlet to the sediment trap/basin has not been properly engineered/stabilized, resulting in degradation to the control and sediment transport.

Inspection Photos
Operator Name: CAERUS PICEANCE LLC #10456
Location #467272



August 17, 2022



August 17, 2022

Photo 16: Photo example showing BMPs to protect and stabilize the slopes of the Location remain missing or insufficient. .

Inspection Photos
Operator Name: CAERUS PICEANCE LLC #10456
Location #467272



Photo 17: Photo taken from the tank battery on the southwest end of the Location. Photo shows signage and labeling remain missing from the tanks/battery.

Inspection Photos
Operator Name: CAERUS PICEANCE LLC #10456
Location #467272



Photo 18: Photo example showing signage remains missing from the wells on the Location.

Inspection Photos
Operator Name: CAERUS PICEANCE LLC #10456
Location #467272



Photo 19: Photo shows pipe/cellar/conductor/equipment remains evident a the PA'd ELU J14 FED #11B-14-496 well site