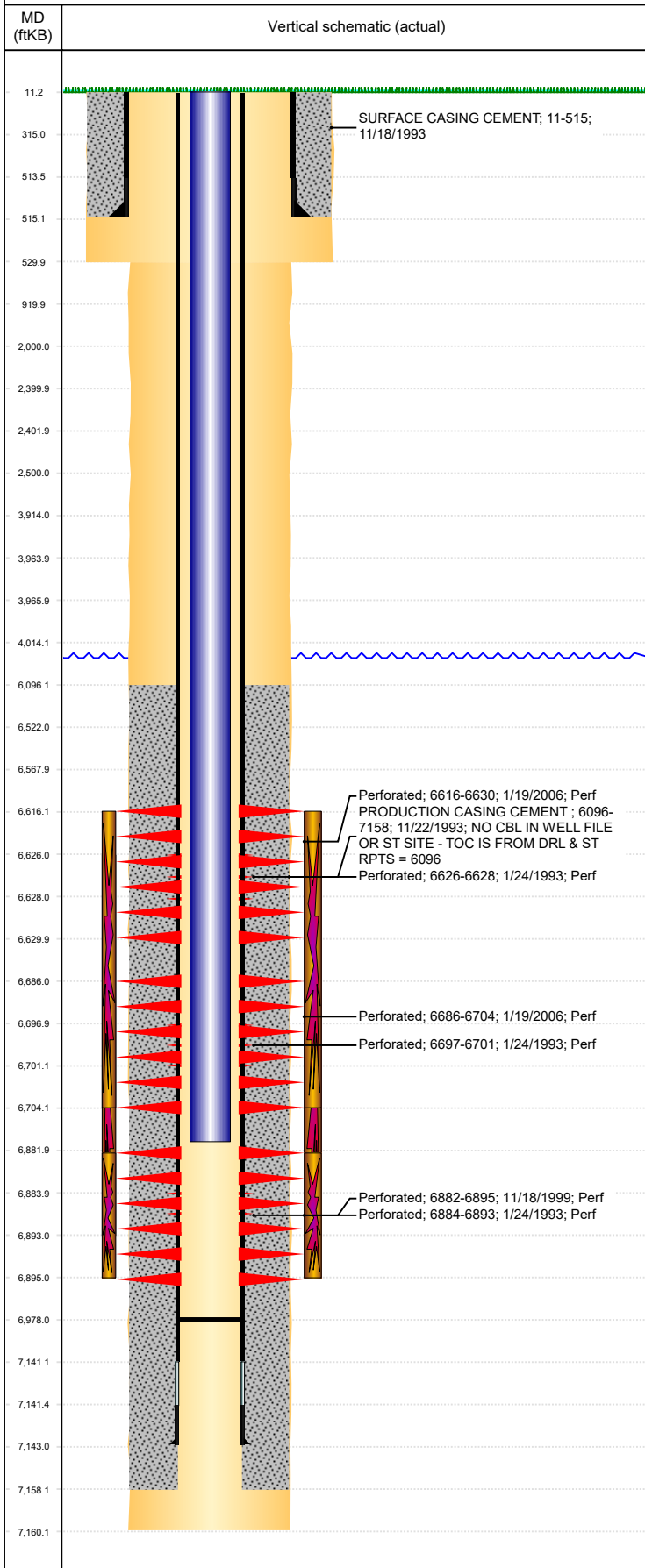




P&A Wellbore For State

Well Name: LEONARD 21-10

Land, Original Hole, 8/22/2022 2:27:57 PM



Well Header									
Surface UWI 0512317588			Business Unit Rockies			Gov Auth Dist		Prod Tree Loc Land	
Orig. KB to Gnd (ft) 11.00		Original Spud Date 11/17/1993		Abandon Date		Well Sub-Status SI			High... N
Comment DISCREPANCY: DR RPT TD DATE 11/21/1993; ST RPT TD DATE 11/22/1993 SURFACE CSG SET DEPTH DISCREPANCY: ST RPT = 503.83; DRL RPT & OPEN HOLE LOG = 515' NO CBL IN WELL FILE OR STATE SITE.									
Surface Location (Congressional)									
Qtr 3 NW	Qtr 4 SE	Section 21	Twنش... 4	Twنش... N	Range 64	Rng E/... W	Latitude (°) 40.29609966 6		Longitude (°) -104.553372459
Wellbore Sections									
Section Des			Hole Size (in)			Act Top (ftKB)		Act Btm (ftKB)	
SURFACE			12 1/4			11.0		530.0	
PRODUCTION			7 7/8			530.0		7,160.0	
Casing Strings									
Csg Des		Run Date		OD (in)	Wt/Len (lb/ft)	Grade	Top Depth (MD) (ftKB)	Set Depth (MD) (ftKB)	
Surface		11/18/1993		8 5/8	23.00	M-50	11	515	
Production Casing		11/22/1993		3 1/2	7.70	M-75	11	7143	
Cement									
Des				Start Date		Top (ftKB)		Btm (ftKB)	
SURFACE CASING CEMENT				11/18/1993		11.0		515.0	
PRODUCTION CASING CEMENT				11/22/1993		6,096.0		7,158.0	
Zone Statuses									
Zone Name	Status Date	Status	Fluid Type	Job				Prod Method	
NIORBARA	2/11/2010	PR						Flowing	
NIORBARA	11/29/2016	SI						Flowing	
CODELL	2/11/2010	PR						Flowing	
CODELL	11/29/2016	SI						Flowing	
Perforation Data									
Linked Zone		Explosive Type	Entered Shot Total	Top (ftKB)		Btm (ftKB)		Date	
NIORBARA, Original Hole		A	84	6,616.0		6,630.0		1/19/2006	
NIORBARA-CODELL, Original Hole			2	6,626.0		6,628.0		1/24/1993	
NIORBARA, Original Hole		B	108	6,686.0		6,704.0		1/19/2006	
NIORBARA, Original Hole			4	6,697.0		6,701.0		1/24/1993	
CODELL, Original Hole			52	6,882.0		6,895.0		11/18/1999	
CODELL, Original Hole			9	6,884.0		6,893.0		1/24/1993	
Stimulation Intervals									
Zone			Start Date			Top (ftKB)		Btm (ftKB)	
NIORBARA, Original Hole			2/14/2006			6,616.0		6,704.0	
NIORBARA-CODELL, Original Hole			11/30/1993			6,626.0		6,893.0	
CODELL, Original Hole			11/30/1999			6,882.0		6,895.0	
Other In Hole									
Run Date		Des			Make		OD (in)	Top (ftKB)	Btm (ftKB)
Logs									
Date		Type					Depth Top (MD) (ftKB)		Btm (ftKB)
11/21/1993		BOREHOLE IMAGER					6,500		7,020.0
11/21/1993		COMPENSATED NEUTRON					4,190		7,156.0
11/21/1993		INDUCTION					515		7,056.0
11/24/1993		GAMMA RAY					6,450		7,067.0
Plug Back Total Depths									
Date		Type			Com				PBTD (ftKB)
1/19/2006		PLUG			TAG SAND PLUG				6,739
3/6/2006		FILL			CLEAN OUT SAND PLUG TO COMMINGLE				6,978