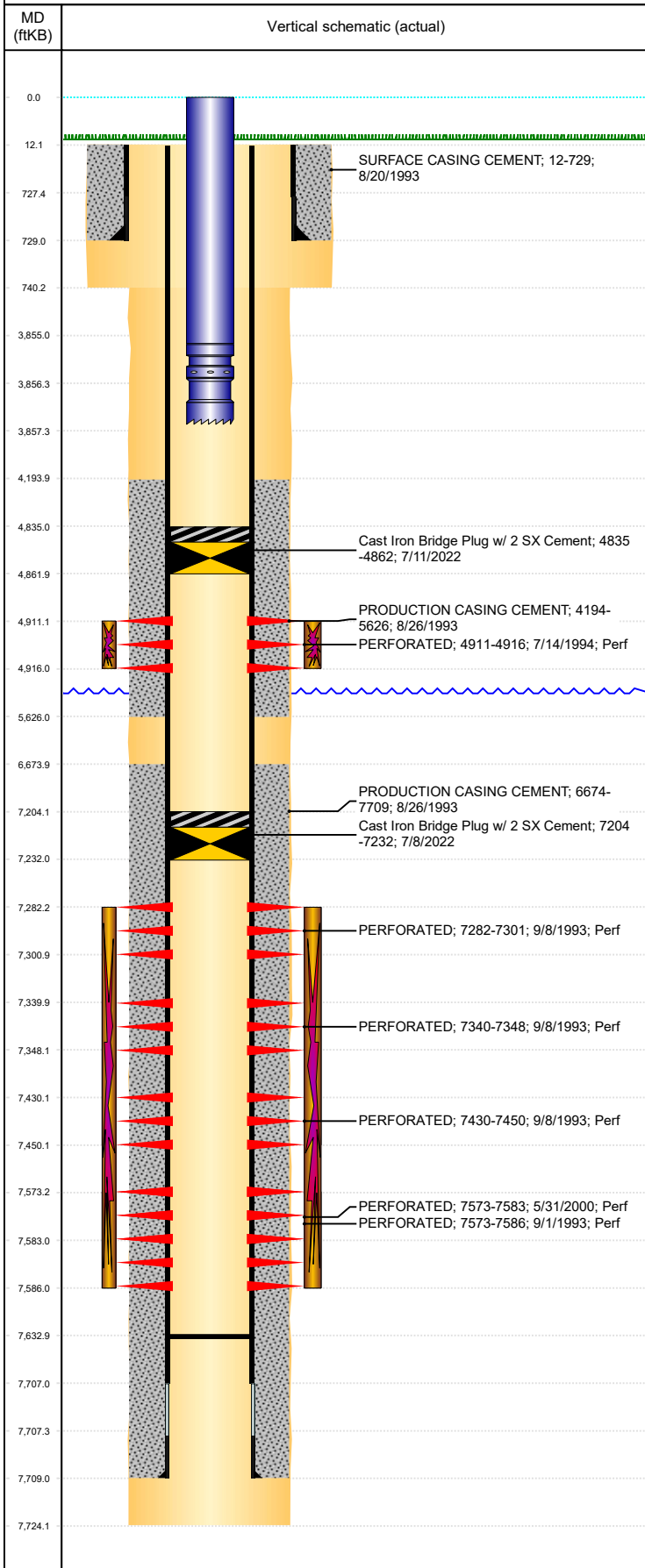




P&A Wellbore For State

Well Name: HSR-MATTHEW 6-15

Land, Original Hole, 7/22/2022 1:05:22 PM



Well Header									
Surface UWI 0512317245			Business Unit Rockies			Gov Auth Dist		Prod Tree Loc Land	
Orig. KB to Gnd (ft) 12.00		Original Spud Date 8/20/1993		Abandon Date		Well Sub-Status TA			High... N
Comment DEVIATED AND LIMITED ENTRY									
Surface Location (Congressional)									
Qtr 3 SE	Qtr 4 NW	Section 15	Twnshp 3	Twنش... N	Range 65	Rng E/... W	Latitude (°) 40.2263892	Longitude (°) -104.6575826	
Wellbore Sections									
Section Des			Hole Size (in)			Act Top (ftKB)		Act Btm (ftKB)	
SURFACE			12 1/4			12.0		740.0	
PRODUCTION			7 7/8			740.0		7,724.0	
Casing Strings									
Csg Des			Run Date		OD (in)	Wt/Len (lb/ft)	Grade	Top Depth (MD) (ftKB)	Set Depth (MD) (ftKB)
Surface			8/20/1993		8 5/8	24.00		12	729
Production Casing			8/26/1993		4 1/2	11.60	I-70	12	7709
Cement									
Des					Start Date		Top (ftKB)		Btm (ftKB)
SURFACE CASING CEMENT					8/20/1993		12.0		729.0
PRODUCTION CASING CEMENT					8/26/1993		4,194.0		5,626.0
PRODUCTION CASING CEMENT					8/26/1993		6,674.0		7,709.0
Zone Statuses									
Zone Name		Status Date	Status	Fluid Type	Job			Prod Method	
SUSSEX	7/23/1994	PR			DRILLING/COMPLETION - ORIGINAL, 8/20/1993...			Flowing	
SUSSEX	7/11/2022	Closed			CIBP, 7/8/2022 00:00				
NIOBRARA	9/13/1993	PR			DRILLING/COMPLETION - ORIGINAL, 8/20/1993...			Flowing	
NIOBRARA	7/8/2022	Closed			CIBP, 7/8/2022 00:00				
CODELL	6/1/2000	PR			RE-FRAC, 5/30/2000 00:00			Flowing	
CODELL	7/11/2022	PR			CIBP, 7/8/2022 00:00				
Perforation Data									
Linked Zone			Explosive Type	Entered Shot Total	Top (ftKB)		Btm (ftKB)		Date
SUSSEX, Original Hole			A	10	4,911.0		4,916.0		7/14/1994
NIOBRARA, Original Hole				19	7,282.0		7,301.0		9/8/1993
NIOBRARA, Original Hole			B	8	7,340.0		7,348.0		9/8/1993
NIOBRARA, Original Hole			C	20	7,430.0		7,450.0		9/8/1993
CODELL, Original Hole				26	7,573.0		7,586.0		9/1/1993
CODELL, Original Hole				20	7,573.0		7,583.0		5/31/2000
Stimulation Intervals									
Zone				Start Date		Top (ftKB)		Btm (ftKB)	
SUSSEX, Original Hole				7/15/1994		4,911.0		4,916.0	
NIOBRARA, Original Hole				9/9/1993		7,282.0		7,450.0	
NIOBRARA-CODELL, Original Hole				6/1/2000		7,282.0		7,586.0	
CODELL, Original Hole				9/3/1993		7,573.0		7,586.0	
Other In Hole									
Run Date		Des			Make		OD (in)	Top (ftKB)	Btm (ftKB)
7/8/2022		Cast Iron Bridge Plug w/ 2 SX Cement					4	7,204.0	7,232.0
7/11/2022		Cast Iron Bridge Plug w/ 2 SX Cement					4	4,835.0	4,862.0
Logs									
Date		Type					Depth Top (MD) (ftKB)		Btm (ftKB)
8/26/1993		INDUCTION					729		7,722.0
8/27/1993		COMPENSATED DENSITY					4,800		7,722.0
8/31/1993		CEMENT BOND					4,030		7,627.0
2/11/2014		GYRO					10		7,150.0
Plug Back Total Depths									
Date		Type			Com				PBTD (ftKB)
8/26/1993		FLOAT COLLAR			TOP OF FLOAT COLLAR				7,665
8/31/1993		FILL			DEPTH LOGGER ON CBL				7,633