



PHOTO: ELU A18 495 - FACING NORTH



PHOTO: ELU A18 495 - FACING EAST

CAERUS OIL & GAS LLC

ELU A18 495 WELL PAD
NW1/4 NW1/4, SECTION 18, T4S, R95W, 6TH P.M.
RIO BLANCO COUNTY, COLORADO

LOCATION PHOTOGRAPHS

DATE TAKEN: 5/06/22

PROJECT NO: 20-13-04

PHOTO 1



WASATCH SURVEYING ASSOCIATES
906 MAIN STREET, EVANSTON, WY 82930
(307) 789-4545



PHOTO: ELU A18 495 - FACING SOUTH



PHOTO: ELU A18 495 - FACING WEST

CAERUS OIL & GAS LLC

ELU A18 495 WELL PAD
NW1/4 NW1/4, SECTION 18, T4S, R95W, 6TH P.M.
RIO BLANCO COUNTY, COLORADO

LOCATION PHOTOGRAPHS

DATE TAKEN: 5/06/22

PROJECT NO: 20-13-04

PHOTO 2



WASATCH SURVEYING ASSOCIATES
906 MAIN STREET, EVANSTON, WY 82930
(307) 789-4545

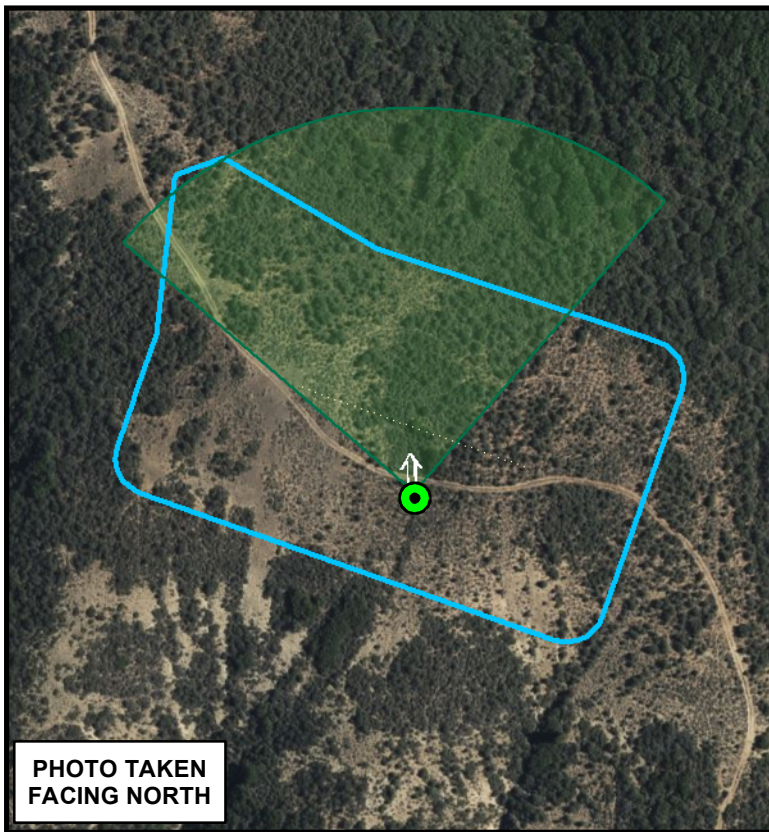


PHOTO TAKEN
FACING NORTH

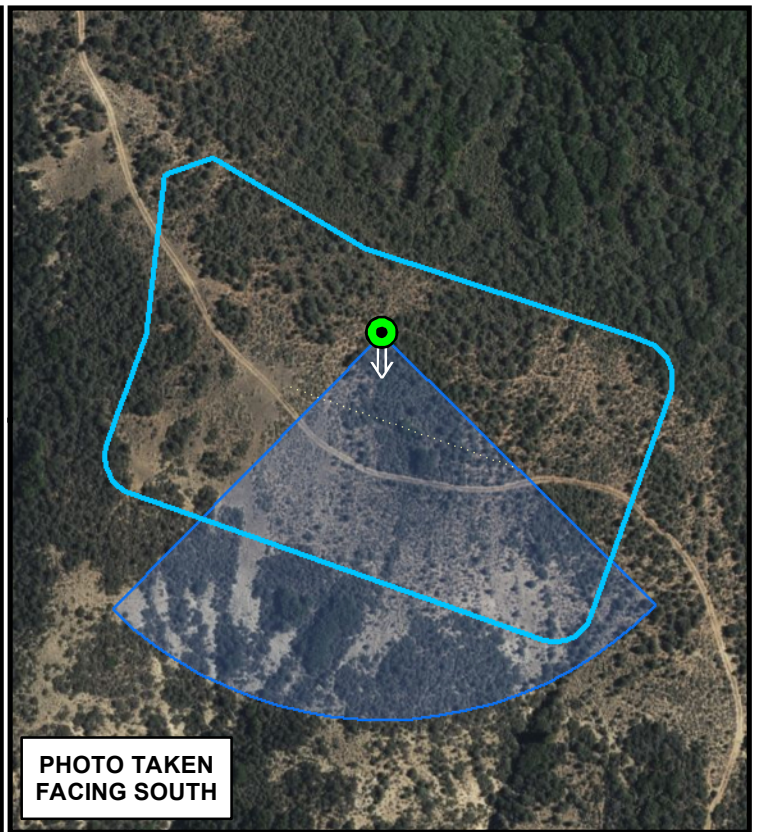


PHOTO TAKEN
FACING SOUTH

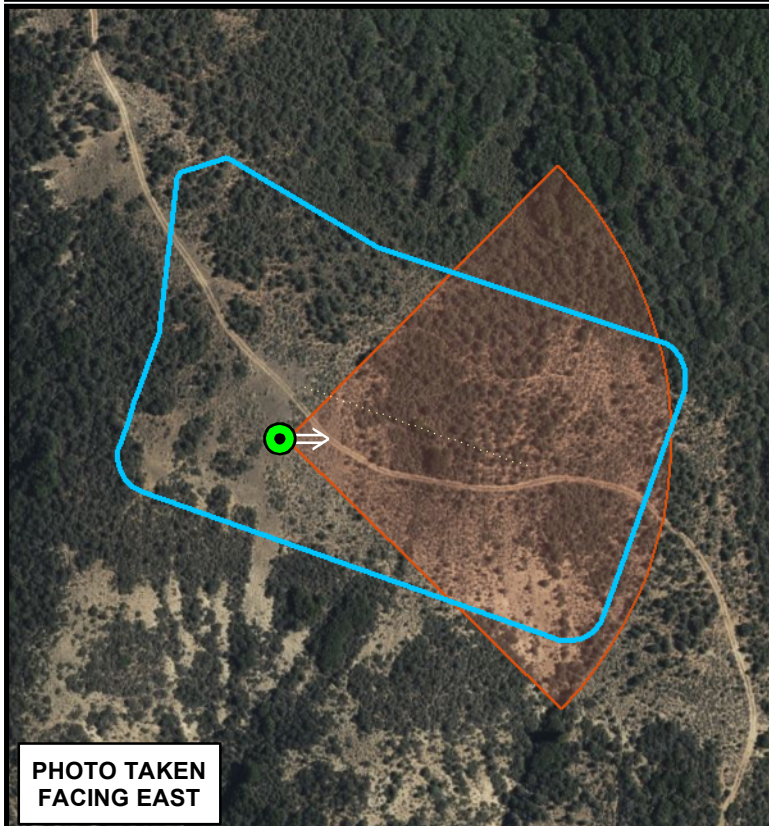


PHOTO TAKEN
FACING EAST

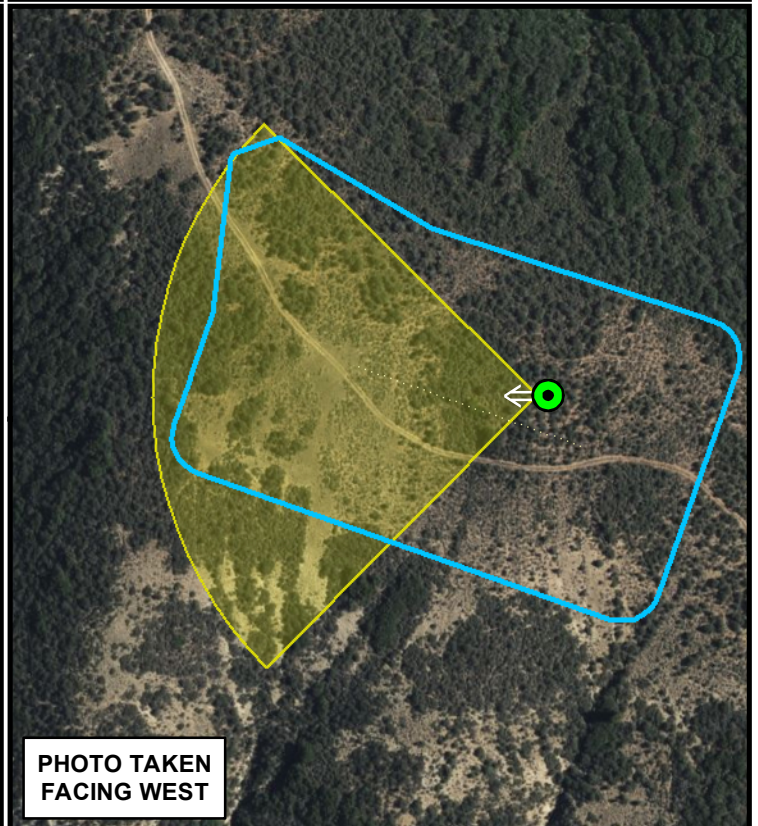
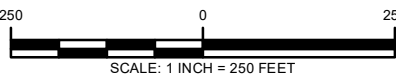


PHOTO TAKEN
FACING WEST

Legend

- LOOKING EASTERLY
- LOOKING NORTHERLY
- LOOKING SOUTHERLY
- LOOKING WESTERLY
- A18 WORKING PAD SURFACE
- PHOTO STANDING POINT



WASATCH SURVEYING ASSOCIATES
906 MAIN STREET, EVANSTON, WY 82930
(307) 789-4545

CAERUS OIL & GAS LLC

ELU A18 495 WELL PAD
LOT 3 (NW1/4 NW1/4),
SECTION 18, T4S, R95W, 6TH P.M.
RIO BLANCO COUNTY, COLORADO

PHOTO FIELD OF VIEW MAP

SURVEYED BY: JT/BT	DATE: 5/18/2020	AERIAL MAP
DRAWN BY: SMM	DATE: 5/11/2022	PROJECT NO: 20-13-04