



Looking North




Looking East

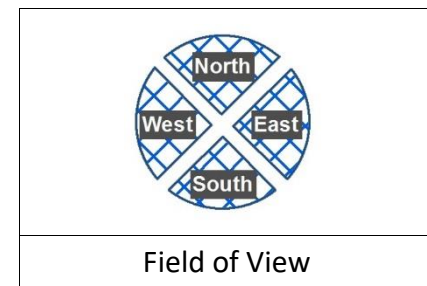


Looking West



Looking South

<b>Operator:</b> CPX Piceance Holdings, LLC	 CPX Piceance Holdings
<b>Location:</b> TPR Pad 25B	
<b>Photo Date:</b> 09/6/21	
<b>Photo Time:</b> 2:30 p.m.	
Garfield County SW ¼ SE ¼ Sec. 25, T7S R94W 6th P.M.	
<b>Reference Area Pictures</b>	





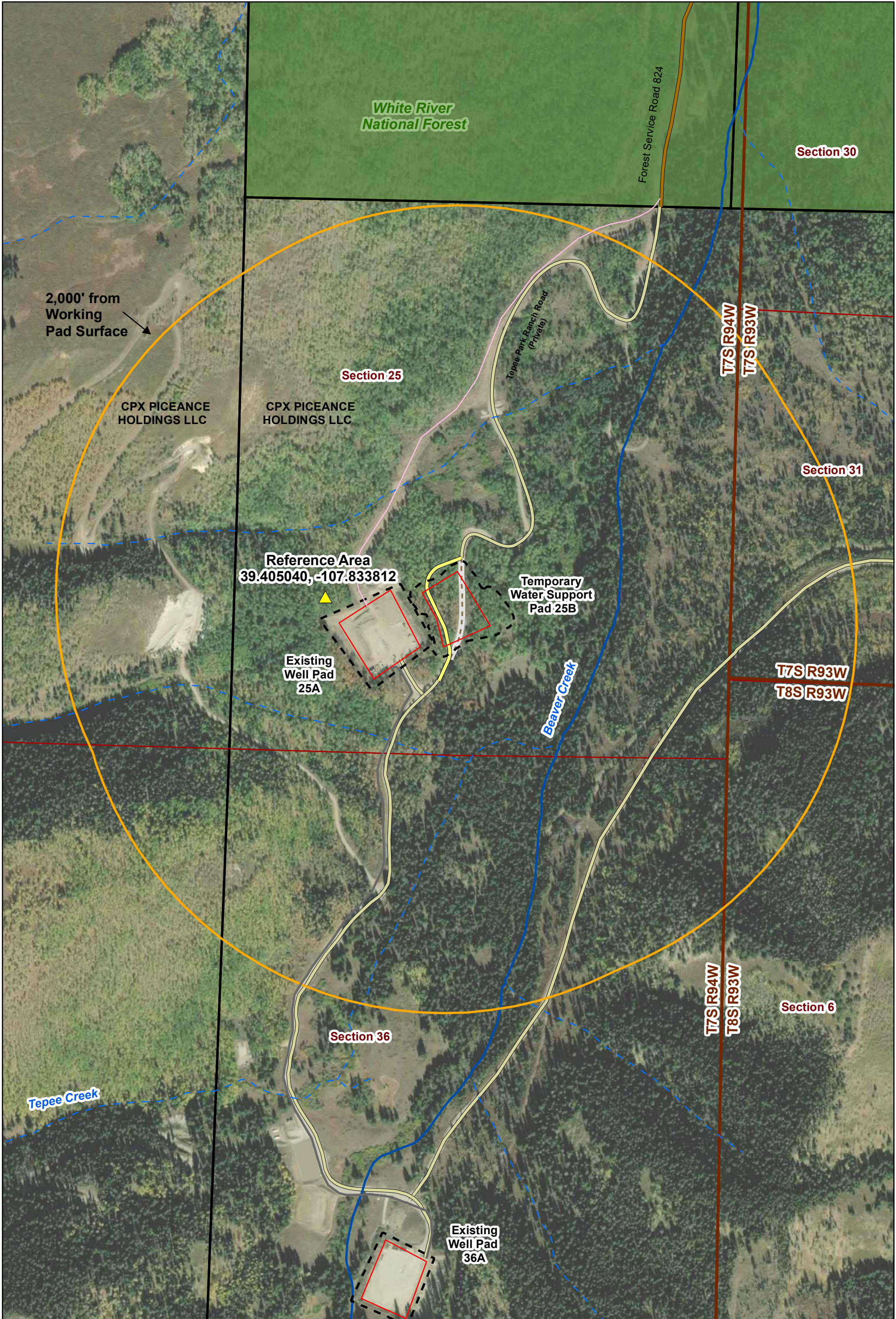
**View from Above**

**Reference Area**

**Lat/Lon**

39.405040

-107.833812



**Aota Technical, LLC**  
 CPX Piceance Holdings, LLC  
 Tepee Park Ranch  
 Temporary Water Support Pad 25B  
**Reference Area Map**  
 Garfield County  
 SW1/4SE1/4 Sec. 25, T7S R94W, 6th P.M.  
 Date: 6/3/22  
 Figure No.: **Figure 8**

Legend	
	Oil and Gas Location
	Working Pad Surface
	2,000' from Working Pad Surface
	Existing Off-location Flowlines
	Proposed Off-location Flowlines
	Forest Service Jurisdiction
	Parcels
	Perennial Stream
	Intermittent Stream
	Forest Service Road
	Private Road
	Private Road Reroute and Access
	Reclaimed Private Road

0 125 250 375 500  
Feet

Data Source:  
 COGCC GIS Online  
 U.S. Geologic Survey, National Hydrography Dataset