



Center of Pad Looking North




Center of Pad Looking East

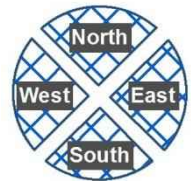


Center of Pad Looking West

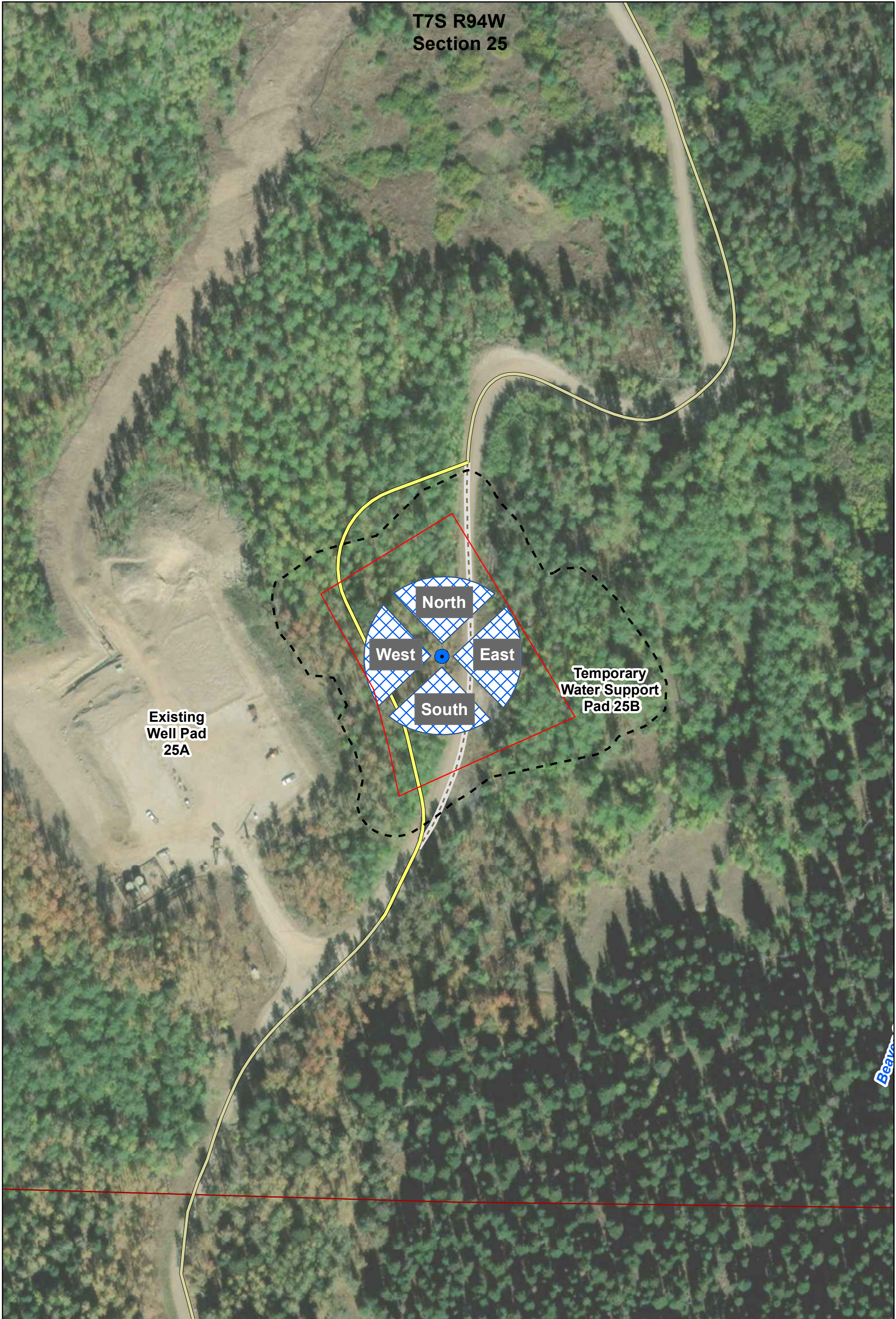


Center of Pad Looking South

Operator: CPX Piceance Holdings, LLC	
Location: TPR Pad 25B	
Photo Date: 6/15/22	
Photo Time: 11:00 a.m.	
Garfield County SW ¼ SE ¼ Sec. 25, T7S R94W 6th P.M.	Location Pictures


Field of View

T7S R94W
Section 25



Existing
Well Pad
25A

Temporary
Water Support
Pad 25B

North
West
East
South

Beaver

Aota Technical, LLC
CPX Piceance Holdings, LLC
Tepee Park Ranch
Temporary Water Support Pad 25B
Location Pictures Aerial
Garfield County
SW1/4SE1/4 Sec. 25, T7S R94W, 6th P.M.
Date
6/24/22

- Legend**
- Location of Picture
 - ▣ Field of View
 - ▭ Working Pad Surface
 - Oil and Gas Location
 - Private Road
 - Private Road Reroute and Access
 - - - Reclaimed Private Road

