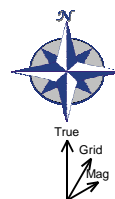
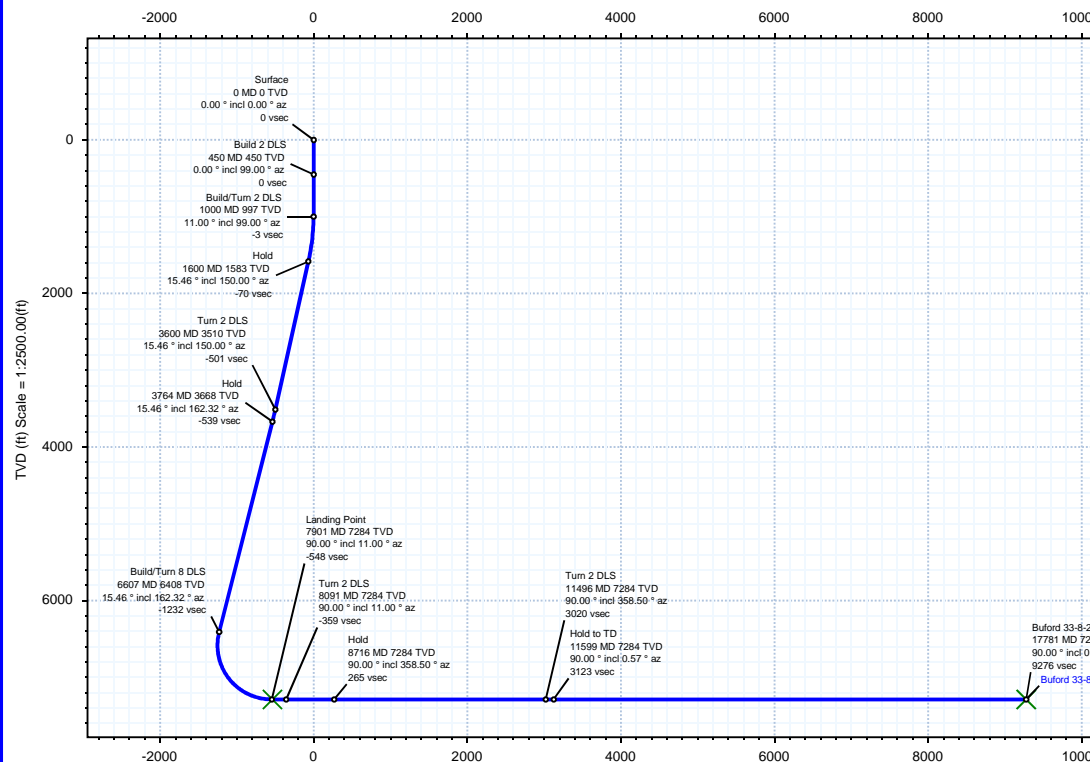


Borehole:	Well:	Field:	Structure:
Original Hole	Buford 33-8-2L	CO, Weld County (NAD 83 NZ) - 2019	Confluence 33-01N-65W (Freedom 33 Pad)

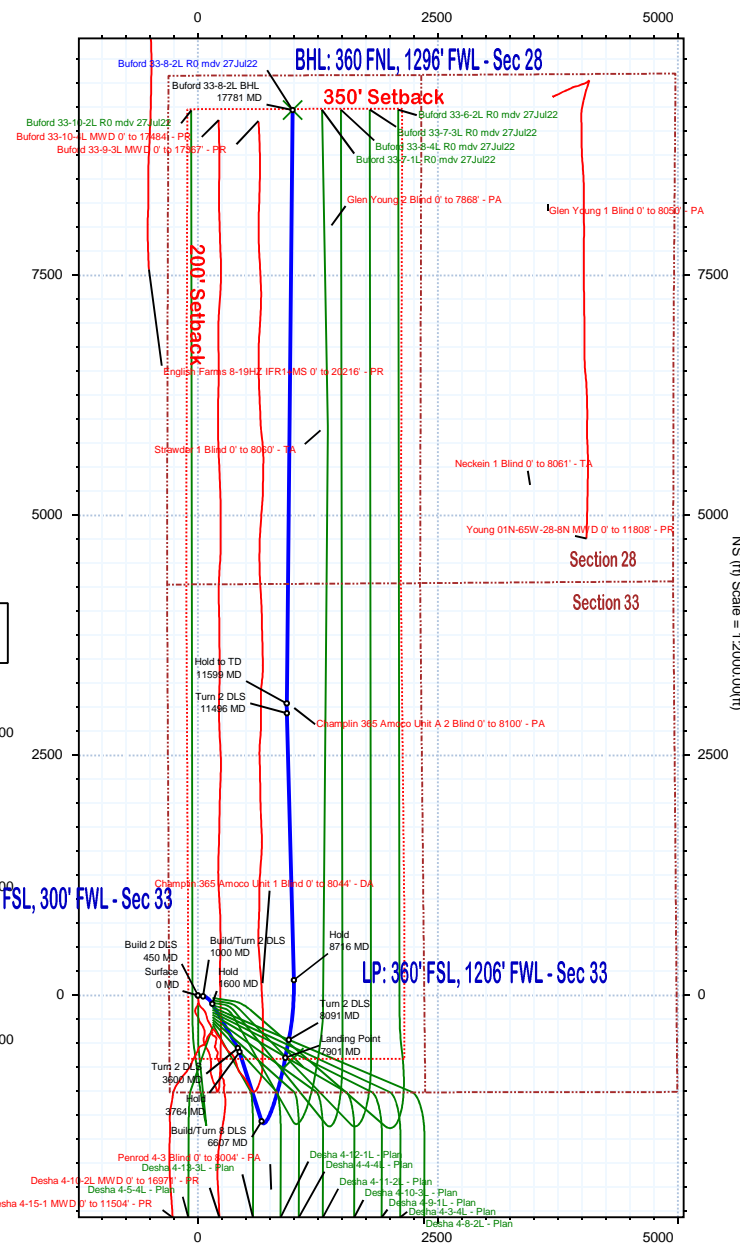
Gravity & Magnetic Parameters	Surface Location	NAD83 Colorado State Plane, Northern Zone, US Feet	Miscellaneous
Model: HDGM 2022 Dip: 66.206° Date: 11-Jul-2022	Lat: N 40 0 11.92 Northing: 1245121.56ftUS Grid Conv: 0.5315°	Lon: W 104 40 38.46 Easting: 3230453.86ftUS Scale Fact: 0.99996612	Slot: Buford 33-8-2L TVD Ref: KB = 23ft(5101ft above MSL)
MagDec: 7.862° FS: 51573.843nT Gravity FS: 998.983mgn (9.80665 Based)			Plan: Buford 33-8-2L R0 mdv 27Jul22

North: 1245121.56179154 Easting: 3230453.85957904		Latitude: N 40 0 11.92 Longitude: W 104 40 38.46		VSec Azimuth: 6.10	
Target Description		Grid Coord		Local Coord	
Target Name	Latitude	Longitude	North	East	TVD
Freedom 33 Pad Sec 33-28 - CL NS	N 40 0 11.66	W 104 40 36.52	1245097.47	3230605.37	5101.00
Freedom 33 Pad Sec 33-28 - W2	N 40 0 11.66	W 104 40 36.52	1245097.47	3230605.37	5101.00
350' NSx200' EW SB	N 40 0 10.91	W 104 40 38.42	1245019.60	3230457.61	5101.00
Freedom 33 Pad Sec 33-28 - CL	N 40 0 10.91	W 104 40 38.42	1245019.60	3230457.61	5101.00
Freedom 33 Pad Sec 33-28 - CL	N 40 0 10.91	W 104 40 38.42	1245019.60	3230457.61	5101.00
Buford 33-8-2L BHL	N 40 1 43.07	W 104 40 25.79	1254353.76	3231353.98	7284.00
Buford 33-8-2L LP	N 40 0 5.51	W 104 40 25.61	1244482.48	3231459.96	7284.00
Critical Points					
Critical Point	MD	INCL	AZIM	TVD	VSEC
Surface	0.00	0.00	0.00	0.00	0.00
Build 2 DLS	450.00	0.00	99.00	450.00	0.00
Build/Turn 2 DLS	1000.00	11.00	99.63	996.63	-2.66
Hold	1600.23	15.46	150.00	1582.64	-70.43
Turn 2 DLS	3600.23	15.46	150.00	3510.32	-501.06
Hold	3764.07	15.46	162.32	3668.28	-538.68
Build/Turn 8 DLS	6606.63	15.46	162.32	6408.03	-1231.91
Landing Point	7900.65	90.00	11.00	7284.00	-548.44
Turn 2 DLS	8090.65	90.00	11.00	7284.00	-358.73
Hold	8715.65	90.00	358.50	7284.00	264.86
Turn 2 DLS	11495.65	90.00	358.50	7284.00	3020.44
Hold to TD	11599.13	90.00	0.57	7284.00	3123.24
Buford 33-8-2L BHL	17780.98	90.00	0.57	7284.00	9276.31



SHL: 1010' FSL, 300' FWL - Sec 33

LP: 360' FSL, 1206' FWL - Sec 33



Buford 33-8-2L R0 mdv 27Jul22 Proposal Geodetic Report

(Def Plan)

Report Date: August 02, 2022 - 12:32 PM
Client: Confluence DJ
Field: CO, Weld County (NAD 83 NZ) - 2019
Structure / Slot: Confluence 33-01N-65W (Freedom 33 Pad) / Buford 33-8-2L
Well: Buford 33-8-2L
Borehole: Original Hole
UWI / API#: 05-123-45540
Survey Name: Buford 33-8-2L R0 mdv 27Jul22
Survey Date: July 11, 2022
Tort / AHD / DDI / ERD Ratio: 144.372 ° / 12161.398 ft / 6.632 / 1.670
Coordinate Reference System: NAD83 Colorado State Plane, Northern Zone, US Feet
Location Lat / Long: N 40° 0' 11.91600", W 104° 40' 38.46000"
Location Grid N/E Y/X: N 1245121.562 ftUS, E 3230453.860 ftUS
CRS Grid Convergence Angle: 0.5315 °
Grid Scale Factor: 0.99996612
Version / Patch: 2.10.832.2

Survey / DLS Computation: Minimum Curvature / Lubinski
Vertical Section Azimuth: 6.100 ° (True North)
Vertical Section Origin: 0.000 ft, 0.000 ft
TVD Reference Datum: KB = 23ft
TVD Reference Elevation: 5101.000 ft above MSL
Seabed / Ground Elevation: 5078.000 ft above MSL
Magnetic Declination: 7.862 °
Total Gravity Field Strength: 998.9829mgn (9.80665 Based)
Gravity Model: GARM
Total Magnetic Field Strength: 51573.843 nT
Magnetic Dip Angle: 66.206 °
Declination Date: July 11, 2022
Magnetic Declination Model: HDGM 2022
North Reference: True North
Grid Convergence Used: 0.0000 °
Total Corr Mag North->True North: 7.8617 °
Local Coord Referenced To: Well Head

Comments	MD (ft)	Incl (°)	Azim True (°)	TVD (ft)	TVDSS (ft)	VSEC (ft)	NS (ft)	EW (ft)	DLS (°/100ft)	Northing (ftUS)	Easting (ftUS)	Latitude (°)	Longitude (°)
Surface	0.00	0.00	0.00	0.00	-5101.00	0.00	0.00	0.00	N/A	1245121.56	3230453.86	40.003310	-104.677350
	100.00	0.00	99.00	100.00	-5001.00	0.00	0.00	0.00	0.00	1245121.56	3230453.86	40.003310	-104.677350
	200.00	0.00	99.00	200.00	-4901.00	0.00	0.00	0.00	0.00	1245121.56	3230453.86	40.003310	-104.677350
	300.00	0.00	99.00	300.00	-4801.00	0.00	0.00	0.00	0.00	1245121.56	3230453.86	40.003310	-104.677350
	400.00	0.00	99.00	400.00	-4701.00	0.00	0.00	0.00	0.00	1245121.56	3230453.86	40.003310	-104.677350
	450.00	0.00	99.00	450.00	-4651.00	0.00	0.00	0.00	0.00	1245121.56	3230453.86	40.003310	-104.677350
	500.00	1.00	99.00	500.00	-4601.00	-0.02	-0.07	0.43	2.00	1245121.50	3230454.29	40.003310	-104.677348
	600.00	3.00	99.00	599.93	-4501.07	-0.20	-0.61	3.88	2.00	1245120.98	3230457.74	40.003308	-104.677336
	700.00	5.00	99.00	699.68	-4401.32	-0.55	-1.71	10.77	2.00	1245119.96	3230464.64	40.003305	-104.677312
	800.00	7.00	99.00	799.13	-4301.87	-1.08	-3.34	21.09	2.00	1245118.42	3230474.98	40.003301	-104.677275
Build/Turn 2 DLS	900.00	9.00	99.00	898.15	-4202.85	-1.78	-5.52	34.84	2.00	1245116.37	3230488.74	40.003295	-104.677226
	1000.00	11.00	99.00	996.63	-4104.37	-2.66	-8.23	51.99	2.00	1245113.81	3230505.92	40.003287	-104.677164
	1100.00	10.99	109.50	1094.80	-4006.20	-5.36	-12.91	70.40	2.00	1245109.31	3230524.37	40.003275	-104.677099
	1200.00	11.34	119.68	1192.92	-3908.08	-11.50	-20.96	87.93	2.00	1245101.42	3230541.98	40.003252	-104.677036
	1300.00	12.01	129.00	1290.86	-3810.14	-21.09	-32.38	104.57	2.00	1245090.15	3230558.72	40.003221	-104.676977
	1400.00	12.96	137.17	1388.50	-3712.50	-34.11	-47.16	120.28	2.00	1245075.53	3230574.56	40.003181	-104.676921
	1500.00	14.12	144.13	1485.72	-3615.28	-50.54	-65.26	135.05	2.00	1245057.56	3230589.50	40.003131	-104.676868
	1600.00	15.45	149.99	1582.42	-3518.58	-70.38	-86.69	148.86	2.00	1245038.26	3230603.51	40.003072	-104.676819
	1600.23	15.46	150.00	1582.64	-3518.36	-70.43	-86.74	148.89	2.00	1245038.21	3230603.54	40.003072	-104.676819
	1700.00	15.46	150.00	1678.80	-3422.20	-91.91	-109.76	162.18	0.00	1245013.31	3230617.05	40.003009	-104.676771
Hold	1800.00	15.46	150.00	1775.18	-3325.82	-113.44	-132.84	175.51	0.00	1244990.36	3230630.58	40.002945	-104.676724
	1900.00	15.46	150.00	1871.57	-3229.43	-134.97	-155.92	188.83	0.00	1244967.41	3230644.12	40.002882	-104.676676
	2000.00	15.46	150.00	1967.95	-3133.05	-156.50	-179.00	202.15	0.00	1244944.45	3230657.66	40.002819	-104.676628
	2100.00	15.46	150.00	2064.34	-3036.66	-178.03	-202.08	215.48	0.00	1244921.50	3230671.20	40.002755	-104.676581
	2200.00	15.46	150.00	2160.72	-2940.28	-199.57	-225.15	228.80	0.00	1244898.55	3230684.73	40.002692	-104.676533
	2300.00	15.46	150.00	2257.10	-2843.90	-221.10	-248.23	242.13	0.00	1244875.60	3230698.27	40.002629	-104.676486
	2400.00	15.46	150.00	2353.49	-2747.51	-242.63	-271.31	255.45	0.00	1244852.64	3230711.81	40.002565	-104.676438
	2500.00	15.46	150.00	2449.87	-2651.13	-264.16	-294.39	268.77	0.00	1244829.69	3230725.34	40.002502	-104.676391
	2600.00	15.46	150.00	2546.26	-2554.74	-285.69	-317.47	282.10	0.00	1244806.74	3230738.88	40.002439	-104.676343
	2700.00	15.46	150.00	2642.64	-2458.36	-307.22	-340.54	295.42	0.00	1244783.79	3230752.42	40.002375	-104.676295
Turn 2 DLS	2800.00	15.46	150.00	2739.02	-2361.98	-328.75	-363.62	308.75	0.00	1244760.83	3230765.95	40.002312	-104.676248
	2900.00	15.46	150.00	2835.41	-2265.59	-350.29	-386.70	322.07	0.00	1244737.88	3230779.49	40.002248	-104.676200
	3000.00	15.46	150.00	2931.79	-2169.21	-371.82	-409.78	335.39	0.00	1244714.93	3230793.03	40.002185	-104.676153
	3100.00	15.46	150.00	3028.18	-2072.82	-393.35	-432.86	348.72	0.00	1244691.97	3230806.57	40.002122	-104.676105
	3200.00	15.46	150.00	3124.56	-1976.44	-414.88	-455.93	362.04	0.00	1244669.02	3230820.10	40.002058	-104.676058
	3300.00	15.46	150.00	3220.94	-1880.06	-436.41	-479.01	375.37	0.00	1244646.07	3230833.64	40.001995	-104.676010
	3400.00	15.46	150.00	3317.33	-1783.67	-457.94	-502.09	388.69	0.00	1244623.12	3230847.18	40.001932	-104.675963
	3500.00	15.46	150.00	3413.71	-1687.29	-479.47	-525.17	402.01	0.00	1244600.16	3230860.71	40.001868	-104.675915
	3600.00	15.46	150.00	3510.10	-1590.90	-501.00	-548.25	415.34	0.00	1244577.21	3230874.25	40.001805	-104.675867
	3600.23	15.46	150.00	3510.32	-1590.68	-501.06	-548.30	415.37	0.00	1244577.16	3230874.28	40.001805	-104.675867
Hold	3700.00	15.37	157.51	3606.51	-1494.49	-523.41	-572.03	427.08	2.00	1244553.54	3230886.21	40.001740	-104.675826
	3764.07	15.46	162.32	3668.28	-1432.72	-538.68	-588.02	432.92	2.00	1244537.61	3230892.20	40.001696	-104.675805
	3800.00	15.46	162.32	3702.91	-1398.09	-547.44	-597.14	435.83	0.00	1244528.51	3230895.19	40.001671	-104.675794
	3900.00	15.46	162.32	3799.29	-1301.71	-571.83	-622.53	443.92	0.00	1244503.20	3230903.52	40.001601	-104.675765
	4000.00	15.46	162.32	3895.67	-1205.33	-596.22	-647.92	452.02	0.00	1244477.88	3230911.85	40.001531	-104.675737
	4100.00	15.46	162.32	3992.06	-1108.94	-620.61	-673.31	460.11	0.00	1244452.57	3230920.18	40.001462	-104.675708
	4200.00	15.46	162.32	4088.44	-1012.56	-644.99	-698.70	468.21	0.00	1244427.26	3230928.51	40.001392	-104.675679
	4300.00	15.46	162.32	4184.82	-916.18	-669.38	-724.10	476.30	0.00	1244401.94	3230936.84	40.001322	-104.675650
	4400.00	15.46	162.32	4281.21	-819.79	-693.77	-749.49	484.40	0.00	1244376.63	3230945.17	40.001253	-104.675621
	4500.00	15.46	162.32	4377.59	-723.41	-718.16	-774.88	492.49	0.00	1244351.31	3230953.50	40.001183	-104.675592
Build/Turn 8 DLS	4600.00	15.46	162.32	4473.97	-627.03	-742.54	-800.27	500.59	0.00	1244326.00	3230961.83	40.001113	-104.675563
	4700.00	15.46	162.32	4570.36	-530.64	-766.93	-825.66	508.68	0.00	1244300.68	3230970.16	40.001043	-104.675534
	4800.00	15.46	162.32	4666.74	-434.26	-791.32	-851.05	516.78	0.00	1244275.37	3230978.49	40.000974	-104.675505
	4900.00	15.46	162.32	4763.12	-337.88	-815.71	-876.44	524.87	0.00	1244250.06	3230986.82	40.000904	-104.675477
	5000.00	15.46	162.32	4859.51	-241.49	-840.09	-901.84	532.97	0.00	1244224.74	3230995.15	40.000834	-104.675448
	5100.00	15.46	162.32	4955.89	-145.11	-864.48	-927.23	541.06	0.00	1244199.43	3231003.48	40.000765	-104.675419
	5200.00	15.46	162.32	5052.27	-48.73	-888.87	-952.62	549.16	0.00	1244174.11	3231011.81	40.000695	-104.675390
	5300.00	15.46	162.32	5148.66	47.66	-913.26	-978.01	557.25	0.00	1244148.80	3231020.14	40.000625	-104.675361
	5400.00	15.46	162.32	5245.04	144.04	-937.64	-1003.40	565.34	0.00	1244123.48	3231028.47	40.000556	-104.675332
	5500.00	15.46	162.32	5341.42	240.42	-962.03	-1028.79	573.44	0.00	1244098.17	3231036.80	40.000486	-104.675303
Build/Turn 8 DLS	5600.00	15.46	162.32	5437.81	336.81	-986.42	-1054.18	581.53	0.00	1244072.86	3231045.13	40.000416	-104.675274
	5700.00	15.46	162.32	5534.19	433.19	-1010.80	-1079.58	589.63	0.00	1244047.54	3231053.46	40.000346	-104.675245
	5800.00	15.46	162.32	5630.57	529.57	-1035.19	-1104.97	597.72	0.00	1244022.23	3231061.79	40.000277	-104.675217
	5900.00	15.46	162.32	5726.96	625.96	-1059.58	-1130.36	605.82	0.00	1243996.91	3231070.12	40.000207	-104.675188
	6000.00	15.46	162.32	5823.34	722.34	-1083.97	-1155.75	613.91	0.00	1243971.60	3231078.45	40.000137	-104.675159
	6100.00	15.46	162.32	5919.72	818.72	-1108.35	-1181.14	622.01	0.00	1243946.28	3231086.78	40.000068	-104.675130
	6200.00	15.46	162.32	6016.11	915.11	-1132.74	-1206.53	630.10	0.00	1243920.97	3231095.10	39.999998	-104.675101
	6300.00	15.46	162.32	6112.49	1011.49	-1157.13	-1231.92	638.20	0.00	1243895.66	3231103.43	39.999928	-104.675072
	6400.00	15.46	162.32	6208.87	1107.87	-1181.52	-1257.32	646.29	0.00	1243870.34	3231111.76	39.999859	-104.675043
	6500.00	15.46	162.32	6305.26	1204.26	-1205.90	-1282.71	654.39	0.00	1243845.03	3231120.09	39.999789	-104.675014
Build/Turn 8 DLS	6600.00	15.46	162.32	6401.64	1300.64	-1230.29	-1308.10	662.48	0.00	1243819.71	3231128.48	39.999719	-104.674985
	6606.63	15.46	162.32	6408.03	1307.03	-1231.91	-130						

Comments	MD (ft)	Incl (°)	Azim True (°)	TVD (ft)	TVDSS (ft)	VSEC (ft)	NS (ft)	EW (ft)	DLS (°/100ft)	Northing (ftUS)	Easting (ftUS)	Latitude (°)	Longitude (°)	
Landing Point	7900.00	89.95	11.01	7284.00	2183.00	-548.68	-649.05	909.88	8.00	1244481.01	3231369.69	40.001528	-104.674102	
	7900.65	90.00	11.00	7284.00	2183.00	-548.04	-648.41	910.00	8.00	1244481.64	3231369.80	40.001530	-104.674102	
	8000.00	90.00	11.00	7284.00	2183.00	-449.05	-550.88	928.96	0.00	1244579.34	3231387.85	40.001798	-104.674034	
	8090.65	90.00	11.00	7284.00	2183.00	-358.73	-461.90	946.25	0.00	1244668.47	3231404.32	40.002042	-104.673972	
Turn 2 DLS	8100.00	90.00	10.81	7284.00	2183.00	-349.41	-452.72	948.02	2.00	1244677.67	3231406.01	40.002067	-104.673966	
	8200.00	90.00	8.81	7284.00	2183.00	-249.63	-354.19	965.07	2.00	1244776.36	3231422.13	40.002338	-104.673905	
	8300.00	90.00	6.81	7284.00	2183.00	-149.68	-255.12	978.66	2.00	1244875.54	3231434.81	40.002610	-104.673857	
	8400.00	90.00	4.81	7284.00	2183.00	-49.68	-155.64	988.79	2.00	1244975.11	3231444.01	40.002883	-104.673821	
Hold	8500.00	90.00	2.81	7284.00	2183.00	50.23	-55.86	995.44	2.00	1245074.94	3231449.74	40.003157	-104.673797	
	8600.00	90.00	0.81	7284.00	2183.00	149.95	44.08	998.60	2.00	1245174.90	3231451.97	40.003431	-104.673785	
	8700.00	90.00	358.81	7284.00	2183.00	249.34	144.07	998.27	2.00	1245274.89	3231450.72	40.003705	-104.673787	
	8715.65	90.00	358.50	7284.00	2183.00	264.86	159.72	997.91	2.00	1245290.52	3231450.21	40.003748	-104.673788	
	8800.00	90.00	358.50	7284.00	2183.00	348.47	244.04	995.70	0.00	1245374.82	3231447.22	40.003980	-104.673796	
	8900.00	90.00	358.50	7284.00	2183.00	447.59	344.01	993.08	0.00	1245474.75	3231443.67	40.004254	-104.673805	
	9000.00	90.00	358.50	7284.00	2183.00	546.71	443.97	990.46	0.00	1245574.69	3231440.13	40.004529	-104.673814	
	9100.00	90.00	358.50	7284.00	2183.00	645.83	543.94	987.85	0.00	1245674.62	3231436.58	40.004803	-104.673824	
	9200.00	90.00	358.50	7284.00	2183.00	744.95	643.90	985.23	0.00	1245774.55	3231433.04	40.005078	-104.673833	
	9300.00	90.00	358.50	7284.00	2183.00	844.08	743.87	982.61	0.00	1245874.49	3231429.49	40.005352	-104.673842	
	9400.00	90.00	358.50	7284.00	2183.00	943.20	843.84	979.99	0.00	1245974.42	3231425.95	40.005626	-104.673852	
	9500.00	90.00	358.50	7284.00	2183.00	1042.32	943.80	977.37	0.00	1246074.36	3231422.40	40.005901	-104.673861	
	9600.00	90.00	358.50	7284.00	2183.00	1141.44	1043.77	974.76	0.00	1246174.29	3231418.86	40.006175	-104.673870	
	9700.00	90.00	358.50	7284.00	2183.00	1240.56	1143.73	972.14	0.00	1246274.22	3231415.31	40.006450	-104.673880	
	9800.00	90.00	358.50	7284.00	2183.00	1339.68	1243.70	969.52	0.00	1246374.16	3231411.77	40.006724	-104.673889	
	9900.00	90.00	358.50	7284.00	2183.00	1438.81	1343.66	966.90	0.00	1246474.09	3231408.22	40.006998	-104.673898	
Turn 2 DLS	10000.00	90.00	358.50	7284.00	2183.00	1537.93	1443.63	964.29	0.00	1246574.02	3231404.68	40.007273	-104.673908	
	10100.00	90.00	358.50	7284.00	2183.00	1637.05	1543.60	961.67	0.00	1246673.96	3231401.13	40.007547	-104.673917	
	10200.00	90.00	358.50	7284.00	2183.00	1736.17	1643.56	959.05	0.00	1246773.89	3231397.59	40.007822	-104.673926	
	10300.00	90.00	358.50	7284.00	2183.00	1835.29	1743.53	956.43	0.00	1246873.82	3231394.04	40.008096	-104.673936	
	10400.00	90.00	358.50	7284.00	2183.00	1934.41	1843.49	953.82	0.00	1246973.76	3231390.50	40.008370	-104.673945	
	10500.00	90.00	358.50	7284.00	2183.00	2033.53	1943.46	951.20	0.00	1247073.69	3231386.95	40.008645	-104.673954	
	10600.00	90.00	358.50	7284.00	2183.00	2132.66	2043.42	948.58	0.00	1247173.62	3231383.41	40.008919	-104.673964	
	10700.00	90.00	358.50	7284.00	2183.00	2231.78	2143.39	945.96	0.00	1247273.56	3231379.86	40.009194	-104.673973	
	10800.00	90.00	358.50	7284.00	2183.00	2330.90	2243.36	943.34	0.00	1247373.49	3231376.32	40.009468	-104.673982	
	10900.00	90.00	358.50	7284.00	2183.00	2430.02	2343.32	940.73	0.00	1247473.43	3231372.77	40.009743	-104.673992	
	11000.00	90.00	358.50	7284.00	2183.00	2529.14	2443.29	938.11	0.00	1247573.36	3231369.23	40.010017	-104.674001	
	11100.00	90.00	358.50	7284.00	2183.00	2628.26	2543.25	935.49	0.00	1247673.29	3231365.68	40.010291	-104.674010	
	11200.00	90.00	358.50	7284.00	2183.00	2727.39	2643.22	932.87	0.00	1247773.23	3231362.14	40.010566	-104.674020	
	11300.00	90.00	358.50	7284.00	2183.00	2826.51	2743.18	930.26	0.00	1247873.16	3231358.59	40.010840	-104.674029	
	11400.00	90.00	358.50	7284.00	2183.00	2925.63	2843.15	927.64	0.00	1247973.09	3231355.05	40.011115	-104.674038	
	11495.65	90.00	358.50	7284.00	2183.00	3020.44	2938.76	925.13	0.00	1248068.68	3231351.66	40.011377	-104.674047	
	Hold to TD	11500.00	90.00	358.59	7284.00	2183.00	3024.75	2943.12	925.02	2.00	1248073.03	3231351.51	40.011389	-104.674048
		11599.13	90.00	0.57	7284.00	2183.00	3123.24	3042.24	924.29	2.00	1248172.14	3231349.86	40.011661	-104.674050
	Buford 33-8-2L BHI	11600.00	90.00	0.57	7284.00	2183.00	3124.10	3043.11	924.30	0.00	1248173.00	3231349.86	40.011664	-104.674050
		11700.00	90.00	0.57	7284.00	2183.00	3223.63	3143.10	925.30	0.00	1248273.00	3231349.93	40.011938	-104.674047
		11800.00	90.00	0.57	7284.00	2183.00	3323.17	3243.10	926.29	0.00	1248373.00	3231349.99	40.012213	-104.674043
		11900.00	90.00	0.57	7284.00	2183.00	3422.70	3343.09	927.29	0.00	1248472.99	3231350.06	40.012487	-104.674040
		12000.00	90.00	0.57	7284.00	2183.00	3522.24	3443.09	928.28	0.00	1248572.99	3231350.13	40.012762	-104.674036
		12100.00	90.00	0.57	7284.00	2183.00	3621.77	3543.08	929.27	0.00	1248672.99	3231350.19	40.013036	-104.674032
		12200.00	90.00	0.57	7284.00	2183.00	3721.31	3643.08	930.27	0.00	1248772.99	3231350.26	40.013311	-104.674029
		12300.00	90.00	0.57	7284.00	2183.00	3820.84	3743.07	931.26	0.00	1248872.98	3231350.33	40.013585	-104.674025
		12400.00	90.00	0.57	7284.00	2183.00	3920.38	3843.07	932.26	0.00	1248972.98	3231350.39	40.013860	-104.674022
		12500.00	90.00	0.57	7284.00	2183.00	4019.91	3943.06	933.25	0.00	1249072.97	3231350.46	40.014134	-104.674018
		12600.00	90.00	0.57	7284.00	2183.00	4119.44	4043.06	934.25	0.00	1249172.97	3231350.53	40.014408	-104.674015
		12700.00	90.00	0.57	7284.00	2183.00	4218.98	4143.05	935.24	0.00	1249272.96	3231350.59	40.014683	-104.674011
		12800.00	90.00	0.57	7284.00	2183.00	4318.51	4243.05	936.23	0.00	1249372.96	3231350.66	40.014957	-104.674008
		12900.00	90.00	0.57	7284.00	2183.00	4418.05	4343.04	937.23	0.00	1249472.96	3231350.73	40.015232	-104.674004
		13000.00	90.00	0.57	7284.00	2183.00	4517.58	4443.04	938.22	0.00	1249572.95	3231350.79	40.015506	-104.674000
		13100.00	90.00	0.57	7284.00	2183.00	4617.12	4543.03	939.22	0.00	1249672.95	3231350.86	40.015781	-104.673997
		13200.00	90.00	0.57	7284.00	2183.00	4716.65	4643.03	940.21	0.00	1249772.95	3231350.93	40.016055	-104.673993
		13300.00	90.00	0.57	7284.00	2183.00	4816.19	4743.02	941.21	0.00	1249872.94	3231350.99	40.016330	-104.673990
13400.00		90.00	0.57	7284.00	2183.00	4915.72	4843.02	942.20	0.00	1249972.94	3231351.06	40.016604	-104.673986	
13500.00		90.00	0.57	7284.00	2183.00	5015.26	4943.01	943.20	0.00	1250072.94	3231351.13	40.016879	-104.67	

Comments	MD (ft)	Incl (°)	Azim True (°)	TVD (ft)	TVDSS (ft)	VSEC (ft)	NS (ft)	EW (ft)	DLS (°/100ft)	Northing (ftUS)	Easting (ftUS)	Latitude (°)	Longitude (°)
Description	Part	MD From (ft)	MD To (ft)	EOU Freq (ft)	Hole Size (in)	Casing Diameter (in)	Expected Max Inclination (deg)	Survey Tool Type		Borehole / Survey			
	1	0.000	23.000	1/100.000	13.500	9.625		B001Mb_MWD+HRGM-Depth Only		Original Hole / Buford 33-8-2L R0 mdv 27Jul22			
	1	23.000	1700.000	1/100.000	13.500	9.625		B001Mb_MWD+HRGM		Original Hole / Buford 33-8-2L R0 mdv 27Jul22			
	1	1700.000	17780.977	1/100.000	8.500	5.500		B001Mb_MWD+HRGM		Original Hole / Buford 33-8-2L R0 mdv 27Jul22			

Buford 33-8-2L R0 mdv 27Jul22 Anti-Collision Summary Report

Analysis Date-24hr Time: August 02, 2022 - 12:32
Client: Confluence DJ
Field: CO, Weld County (NAD 83 NZ) - 2019
Structure: Confluence 33-01N-65W (Freedom 33 Pad)
Slot: Buford 33-8-2L
Well: Buford 33-8-2L
Borehole: Original Hole
Scan MD Range: 0.00ft ~ 17780.98ft

Analysis Method: 3D Least Distance
Reference Trajectory: Buford 33-8-2L R0 mdv 27Jul22 (Def Plan)
Depth Interval: Every 10.00 Measured Depth (ft)
Rule Set: NAL Procedure: D&M AntiCollision Standard S002
Min Pts: All local minima indicated.
Version / Patch: 2.10.832.2
Database \ Project: us1455vsm3175\drilling-CO, Weld County 2.10_RESTORE

Trajectory Error Model: ISCWSA3 3-D 95.000% Confidence 2.7955 sigma, for subject well. For offset wells, error model version is specified with each well respectively.

Offset Selection Criteria

Wellhead distance scan: Not performed!
Selection filters: Definitive Surveys - Definitive Plans - Definitive surveys exclude definitive plans
- All Non-Def Surveys when no Def-Survey is set in a borehole - All Non-Def Plans when no Def-Plan is set in a borehole

Offset Trajectories Summary

Offset Trajectory	Separation			Allow Dev. (ft)	Sep. Fact.	Controlling Rule	Reference Trajectory		Risk Level			Alert	Status
	Ct-Ct (ft)	MAS (ft)	EOU (ft)				MD (ft)	TVD (ft)	Alert	Minor	Major		

Results highlighted: Sep-Factor separation <= 1.50 ft

Buford 33-9-3L MWD 0' to 17367' - PR (Def Survey) Fail Major

25.52	20.76	23.71	4.76	N/A	MAS = 6.33 (m)	0.00	0.00	CtCt<=15m<15.00				Enter Alert	
25.50	20.76	23.69	4.74	N/A	MAS = 6.33 (m)	23.00	23.00					WRP	
23.69	20.76	16.17	2.93	3.83	MAS = 6.33 (m)	660.00	658.81					MinPts	
23.83	20.76	16.01	3.07	3.67	MAS = 6.33 (m)	690.00	689.72					MINPT-O-EQU	
25.15	20.76	16.74	4.39	3.54	MAS = 6.33 (m)	750.00	749.45					MinPt-O-SF	
47.99	20.76	37.30	27.23	5.20	MAS = 6.33 (m)	980.00	976.98	CtCt<=15m>15.00				Exit Alert	
222.01	31.21	200.66	190.79	11.17	OSF1.50	2250.00	2208.91					MinPt-CtCt	
222.39	32.24	200.37	190.16	10.81	OSF1.50	2340.00	2295.66					MINPT-O-EQU	
222.76	32.71	200.42	190.05	10.67	OSF1.50	2380.00	2334.21					MinPt-O-ADP	
269.20	52.71	233.53	216.50	7.86	OSF1.50	3764.07	3668.28					MINPT-O-EQU	
269.46	53.03	233.57	216.43	7.81	OSF1.50	3790.00	3693.27					MinPt-O-ADP	
324.77	98.79	258.37	225.98	4.99	OSF1.50	7020.00	6811.58	OSF<5.00				Enter Alert	
209.59	110.58	135.33	99.01	2.86	OSF1.50	7670.00	7247.50					MinPt-CtCt	
210.38	113.30	134.31	97.08	2.80	OSF1.50	7710.00	7258.99					MINPT-O-EQU	
211.42	114.60	134.49	96.82	2.79	OSF1.50	7730.00	7263.94					MinPt-O-SF	
214.80	116.93	136.31	97.87	2.77	OSF1.50	7770.00	7272.22					MinPt-O-ADP	
300.51	192.53	171.62	107.98	2.35	OSF1.50	10210.00	7284.00					MinPt-CtCt	
301.24	235.37	143.79	65.87	1.92	OSF1.50	10960.00	7284.00					MinPt-CtCt	
275.20	271.96	94.36	4.24	1.52	OSF1.50	11560.00	7284.00					MinPt-CtCt	
275.57	276.66	91.60	-0.09	1.50	OSF1.50	11630.00	7284.00	OSF<1.50				Enter Minor	
258.92	297.38	60.13	-38.46	1.30	OSF1.50	11970.00	7284.00					MinPt-CtCt	
259.38	298.95	59.54	-39.57	1.30	OSF1.50	12010.00	7284.00					MINPT-O-EQU	
267.63	314.93	57.15	-47.29	1.27	OSF1.50	12270.00	7284.00					MINPT-O-EQU	
274.75	331.21	53.41	-56.46	1.24	OSF1.50	12520.00	7284.00					MINPT-O-EQU	
276.81	333.91	53.67	-57.10	1.24	OSF1.50	12570.00	7284.00					MinPt-O-SF	
279.90	337.33	54.47	-57.44	1.24	OSF1.50	12630.00	7284.00					MinPt-O-ADP	
276.74	414.41	-0.07	-137.67	1.00	OSF1.50	13770.00	7284.00	OSF<1.00				Enter Major	
275.49	425.54	-8.73	-150.04	0.97	OSF1.50	13950.00	7284.00					MinPt-CtCt	
273.93	436.06	-17.25	-162.07	0.94	OSF1.50	14110.00	7284.00					MinPt-CtCt	
274.50	438.27	-18.21	-163.76	0.94	OSF1.50	14160.00	7284.00					MinPt-O-SF	
274.76	438.67	-18.22	-163.91	0.94	OSF1.50	14170.00	7284.00					MINPT-O-EQU	
275.44	439.42	-18.04	-163.93	0.94	OSF1.50	14190.00	7284.00					MinPt-O-ADP	
311.34	489.29	-2.05	-157.95	0.92	OSF1.50	14620.00	7284.00					MinPts	
313.25	551.99	-55.24	-238.70	0.85	OSF1.50	15820.00	7284.00					MinPt-CtCt	
314.25	556.19	-57.08	-241.94	0.85	OSF1.50	15900.00	7284.00					MinPt-O-SF	
314.54	556.67	-57.11	-242.14	0.85	OSF1.50	15910.00	7284.00					MINPT-O-EQU	
316.06	558.53	-56.83	-242.47	0.85	OSF1.50	15950.00	7284.00					MinPt-O-ADP	
322.97	566.64	-55.33	-243.67	0.85	OSF1.50	16080.00	7284.00					MinPt-O-ADP	
337.06	642.49	-91.80	-305.42	0.79	OSF1.50	17150.00	7284.00					MinPt-CtCt	
340.96	653.83	-95.46	-312.87	0.78	OSF1.50	17340.00	7284.00					MinPt-O-SF	
346.35	663.14	-96.27	-316.79	0.78	OSF1.50	17480.00	7284.00					MINPT-O-EQU	
348.18	665.31	-96.98	-317.14	0.78	OSF1.50	17520.00	7284.00					MinPt-O-ADP	
358.76	677.09	-93.12	-318.25	0.79	OSF1.50	17680.00	7284.00					MinPts	
377.11	641.16	-50.86	-264.04	0.88	OSF1.50	17780.98	7284.00					TD	

Champlin 365 Amoco Unit A 2
Blind 0' to 8100' - PA (Def Survey)

Fail Major

3157.92	32.81	3155.82	3125.11	11146.55	MAS = 10.00 (m)	0.00	0.00					Surface	
3157.92	32.81	3155.23	3125.11	3606.24	MAS = 10.00 (m)	23.00	23.00					WRP	
3148.52	66.54	3103.56	3081.98	72.93	OSF1.50	1080.00	1075.17					MinPt-CtCt	
3150.74	73.13	3101.35	3077.61	66.23	OSF1.50	1190.00	1183.11					MINPT-O-EQU	
3153.79	76.72	3102.03	3077.06	63.12	OSF1.50	1250.00	1241.92					MinPt-O-ADP	
1461.43	441.85	1166.33	1019.59	4.97	OSF1.50	10090.00	7284.00	OSF<5.00				Enter Alert	
436.52	441.56	141.61	-5.04	1.48	OSF1.50	11120.00	7284.00					Enter Minor	
290.28	441.95	-4.89	-151.67	0.98	OSF1.50	11270.00	7284.00					Enter Major	
78.60	471.50	-236.27	-392.90	0.25	OSF1.50	11550.00	7284.00	OSF<1.00				MinPts	
79.12	472.21	-236.22	-393.09	0.25	OSF1.50	11560.00	7284.00					MinPt-O-ADP	
288.87	446.60	-9.39	-157.73	0.97	OSF1.50	11830.00	7284.00					Exit Major	
435.09	444.67	138.11	-9.58	1.47	OSF1.50	11980.00	7284.00					Exit Minor	
1469.99	442.94	1174.16	1027.04	4.99	OSF1.50	13020.00	7284.00	OSF>5.00		OSF>1.50		Exit Alert	
6229.34	444.13	5932.72	5785.21	21.11	OSF1.50	17780.98	7284.00					TD	

Buford 33-7-1L R0 mdv 27Jul22
(Def Plan)

Fail Major

182.46	32.81	181.47	149.65	N/A	MAS = 10.00 (m)	0.00	0.00					Surface	
182.46	32.81	181.47	149.65	N/A	MAS = 10.00 (m)	23.00	23.00					WRP	
122.71	32.81	105.12	89.90	7.33	MAS = 10.00 (m)	1730.00	1707.71					MinPts	
122.79	32.81	104.97	89.98	7.24	MAS = 10.00 (m)	1760.00	1736.63					MINPT-O-EQU	
125.14	32.81	106.64	92.33	7.09	MAS = 10.00 (m)	1890.00	1861.93					MinPt-O-SF	
148.34	45.25	117.85	103.09	4.99	OSF1.50	3370.00	3288.41	OSF<5.00				Enter Alert	
148.49	45.40	117.90	103.09	4.98	OSF1.50	3380.00	3298.05					MinPt-O-ADP	
157.27	51.30	122.74	105.97	4.66	OSF1.50	3740.00	3645.07					MinPt-O-SF	
340.71	109.79	267.19	230.92	4.68	OSF1.50	6540.00	6343.81					MinPt-O-SF	
347.77	112.20	272.63	235.56	4.68	OSF1.50	6640.00	6440.36					MinPt-O-SF	
378.44	114.28	301.93	264.17	5.00	OSF1.50	7270.00	7026.09	OSF>5.00				Exit Alert	

Offset Trajectory	Separation			Allow Dev. (ft)	Sep. Fact.	Controlling Rule	Reference Trajectory		Risk Level			Alert	Status
	Ct-Ct (ft)	MAS (ft)	EOU (ft)				MD (ft)	TVD (ft)	Alert	Minor	Major		
363.50	109.93	289.89	253.57	4.99		OSF1.50	7900.00	7284.00	OSF<5.00			Enter Alert	
334.20	122.02	252.52	212.18	4.13		OSF1.50	8620.00	7284.00				MinPt-CtCt	
334.65	123.39	252.06	211.26	4.09		OSF1.50	8670.00	7284.00				MINPT-O-EOU	
335.58	124.50	252.25	211.08	4.06		OSF1.50	8710.00	7284.00				MinPt-O-ADP	
422.28	422.68	140.17	-0.40	1.50		OSF1.50	14310.00	7284.00	OSF<1.50			Enter Minor	
366.58	549.88	-0.33	-183.29	1.00		OSF1.50	16510.00	7284.00				Enter Major	
332.95	621.08	-81.39	-288.09	0.80		OSF1.50	17780.98	7284.00	OSF<1.00			MinPts	
Strawder 1 Blind 0' to 8060' - TA (Def Survey)													Fail Major
6023.96	32.81	6022.15	5991.15	N/A		MAS = 10.00 (m)	0.00	0.00				Surface	
6023.88	32.81	6022.06	5991.07	706845.15		MAS = 10.00 (m)	20.00	20.00				MinPt-O-SF	
6023.88	32.81	6022.06	5991.07	799040.83		MAS = 10.00 (m)	23.00	23.00				WRP	
6021.01	61.05	5979.70	5959.95	152.41		OSF1.50	1030.00	1026.08				MinPt-CtCt	
6023.32	67.64	5977.62	5955.68	137.20		OSF1.50	1140.00	1134.06				MINPT-O-EOU	
6025.79	70.64	5978.09	5955.15	131.29		OSF1.50	1190.00	1183.11				MinPt-O-ADP	
1463.62	440.40	1169.49	1023.22	5.00		OSF1.50	13020.00	7284.00	OSF<5.00			Enter Alert	
468.02	475.61	150.41	-7.59	1.48		OSF1.50	14110.00	7284.00				Enter Minor	
341.82	517.25	-3.55	-175.43	0.99		OSF1.50	14340.00	7284.00				Enter Major	
324.60	531.69	-30.40	-207.10	0.91		OSF1.50	14450.00	7284.00				MinPt-CtCt	
324.84	532.18	-30.49	-207.34	0.91		OSF1.50	14460.00	7284.00				MinPts	
350.71	526.63	-0.91	-175.92	1.00		OSF1.50	14580.00	7284.00				Exit Major	
486.82	494.21	156.82	-7.38	1.48		OSF1.50	14810.00	7284.00				Exit Minor	
1498.40	451.15	1197.10	1047.25	4.99		OSF1.50	15910.00	7284.00	OSF>5.00			Exit Alert	
3349.56	445.51	3052.02	2904.05	11.31		OSF1.50	17780.98	7284.00				TD	
Desha 4-12-1L - Plan (Def Plan)													Fail Minor
316.86	32.81	315.87	284.05	N/A		MAS = 10.00 (m)	0.00	0.00				Surface	
316.85	32.81	315.86	284.04	N/A		MAS = 10.00 (m)	23.00	23.00				WRP	
316.85	32.81	313.98	284.04	167.77		MAS = 10.00 (m)	250.00	250.00				MinPts	
316.96	32.81	313.81	284.16	145.89		MAS = 10.00 (m)	280.00	280.00				MINPT-O-EOU	
124.12	38.07	98.41	86.05	4.98		OSF1.50	3410.00	3326.97	OSF<5.00			Enter Alert	
70.21	54.65	33.45	15.56	1.93		OSF1.50	4120.00	4011.33				MinPt-CtCt	
71.72	59.02	32.05	12.70	1.83		OSF1.50	4220.00	4107.72				MINPT-O-EOU	
73.09	60.62	32.35	12.47	1.81		OSF1.50	4260.00	4146.27				MinPt-O-ADP	
73.94	61.38	32.69	12.55	1.81		OSF1.50	4280.00	4165.55				MinPt-O-SF	
306.02	92.70	243.89	213.32	4.99		OSF1.50	6210.00	6025.74	OSF>5.00			Exit Alert	
342.38	103.85	272.82	238.53	4.98		OSF1.50	6900.00	6696.68	OSF<5.00			Enter Alert	
104.16	110.53	30.14	-6.38	1.41		OSF1.50	7220.00	6986.80				Enter Minor	
81.88	111.55	7.18	-29.67	1.10		OSF1.50	7270.00	7026.09				MinPt-O-ADP	
80.40	109.74	6.91	-29.34	1.10		OSF1.50	7280.00	7033.69				MinPts	
80.13	107.13	8.38	-27.00	1.12		OSF1.50	7290.00	7041.20				MinPt-CtCt	
90.65	93.25	28.17	-2.59	1.46		OSF1.50	7330.00	7070.31				Exit Minor	
268.67	82.98	213.02	185.69	4.90		OSF1.50	7550.00	7200.59	OSF>5.00			Exit Alert	
10228.90	112.18	10153.79	10116.72	137.97		OSF1.50	17780.98	7284.00				TD	
Buford 33-8-4L R0 mdv 27Jul22 (Def Plan)													Fail Minor
169.52	32.81	168.54	136.72	N/A		MAS = 10.00 (m)	0.00	0.00				Surface	
169.52	32.81	168.54	136.72	N/A		MAS = 10.00 (m)	23.00	23.00				WRP	
169.52	32.81	165.65	136.72	58.30		MAS = 10.00 (m)	350.00	350.00				MinPts	
169.67	32.81	165.50	136.86	53.04		MAS = 10.00 (m)	380.00	380.00				MINPT-O-EOU	
215.42	32.81	197.12	182.61	12.39		MAS = 10.00 (m)	1810.00	1784.82				MinPt-O-SF	
627.23	116.56	549.19	510.67	8.13		OSF1.50	6700.00	6499.18				MinPt-O-SF	
553.19	112.07	478.15	441.12	7.46		OSF1.50	8640.00	7284.00				MinPt-CtCt	
553.67	113.52	477.67	440.16	7.37		OSF1.50	8700.00	7284.00				MINPT-O-EOU	
589.22	177.73	470.40	411.48	4.99		OSF1.50	10270.00	7284.00	OSF<5.00			Enter Alert	
561.09	561.59	186.37	-0.50	1.50		OSF1.50	16990.00	7284.00				Enter Minor	
552.84	607.65	147.41	-54.81	1.36		OSF1.50	17780.98	7284.00	OSF<1.50			MinPts	
Champlin 365 Amoco Unit 1 Blind 0' to 8044' - DA (Def Survey)													Fail Minor
685.98	32.81	684.17	653.17	N/A		MAS = 10.00 (m)	0.00	0.00				Surface	
685.78	32.81	683.94	652.97	26402.69		MAS = 10.00 (m)	10.00	10.00				MinPt-O-SF	
685.72	32.81	683.82	652.91	8492.62		MAS = 10.00 (m)	23.00	23.00				WRP	
561.67	110.99	487.15	450.68	7.68		OSF1.50	1890.00	1861.93				MinPt-CtCt	
567.77	129.23	481.08	438.54	6.65		OSF1.50	2200.00	2160.72				MINPT-O-EOU	
576.13	139.28	482.74	436.84	6.26		OSF1.50	2370.00	2324.57				MinPt-O-ADP	
743.75	218.34	597.65	525.41	5.14		OSF1.50	3710.00	3616.15				MinPt-O-SF	
1386.85	417.46	1108.00	969.39	5.00		OSF1.50	7130.00	6911.14	OSF<5.00			Enter Alert	
435.89	439.59	142.29	-3.71	1.49		OSF1.50	8380.00	7284.00				Enter Minor	
324.77	440.54	30.54	-115.77	1.10		OSF1.50	8690.00	7284.00				MinPts	
434.20	440.51	139.99	-6.31	1.48		OSF1.50	8980.00	7284.00				Exit Minor	
1454.80	439.80	1161.07	1015.00	4.97		OSF1.50	10110.00	7284.00	OSF>5.00			Exit Alert	
9101.62	441.66	8806.64	8659.96	31.02		OSF1.50	17780.98	7284.00				TD	
Glen Young 2 Blind 0' to 7868' - PA (Def Survey)													Fail Minor
8141.22	32.81	8139.41	8108.42	N/A		MAS = 10.00 (m)	0.00	0.00				Surface	
8141.06	32.81	8139.22	8108.25	304068.33		MAS = 10.00 (m)	23.00	23.00				WRP	
8140.32	57.05	8101.68	8083.27	221.00		OSF1.50	1000.00	996.63				MinPt-CtCt	
8142.67	64.24	8099.24	8078.43	195.60		OSF1.50	1120.00	1114.43				MINPT-O-EOU	
8145.14	67.24	8099.71	8077.90	186.70		OSF1.50	1170.00	1163.50				MinPt-O-ADP	
1472.74	443.71	1176.40	1029.03	4.99		OSF1.50	15170.00	7284.00	OSF<5.00			Enter Alert	
520.88	526.93	169.05	-6.06	1.48		OSF1.50	16270.00	7284.00				Enter Minor	
416.65	590.68	22.36	-174.00	1.06		OSF1.50	16580.00	7284.00				MinPt-CtCt	
417.04	591.76	22.00	-174.72	1.06		OSF1.50	16600.00	7284.00				MinPts	
542.52	548.79	176.12	-6.27	1.48		OSF1.50	16930.00	7284.00				Exit Minor	
1268.78	469.79	955.05	798.99	4.06		OSF1.50	17780.98	7284.00				TD	
Buford 33-10-4L MWD 0' to 17484' - PR (Def Survey)													Warning Alert
76.56	32.81	74.75	43.75	N/A		MAS = 10.00 (m)	0.00	0.00				Surface	
76.55	32.81	74.74	43.74	N/A		MAS = 10.00 (m)	23.00	23.00				WRP	
76.03	32.81	72.00	43.22	33.56		MAS = 10.00 (m)	320.00	320.00				MinPts	
76.24	32.81	68.29	43.43	12.13		MAS = 10.00 (m)	720.00	719.60				MinPts	
76.67	32.81	67.71	43.87	10.47		MAS = 10.00 (m)	820.00	818.97				MINPT-O-EOU	
101.11	32.81	87.92	68.30	8.73		MAS = 10.00 (m)	1230.00	1222.32				MinPt-O-SF	
380.41	50.72	346.06	329.69	11.57		OSF1.50	3580.00	3490.82				MinPt-O-SF	
450.54	66.12	405.93	384.43	10.44		OSF1.50	4470.00	4348.67				MinPt-O-ADP	
497.19	79.59	443.60	417.60	9.53		OSF1.50	5290.00	5139.02				MinPt-O-SF	
502.64	80.43	448.48	422.20	9.53		OSF1.50	5340.00	5187.21				MinPt-O-SF	

Offset Trajectory	Separation			Allow Dev. (ft)	Sep. Fact.	Controlling Rule	Reference Trajectory		Risk Level			Alert	Status
	Cl-Ct (ft)	MAS (ft)	EOU (ft)				MD (ft)	TVD (ft)	Alert	Minor	Major		
593.43	116.10	515.50	477.33	7.75		OSF1.50	7310.00	7055.94				MinPt-CtCt	
593.57	116.46	515.40	477.12	7.73		OSF1.50	7330.00	7070.31				MINPT-O-EOU	
593.74	116.63	515.45	477.11	7.72		OSF1.50	7340.00	7077.35				MinPt-O-ADP	
598.26	118.17	518.95	480.09	7.68		OSF1.50	7430.00	7136.14				MinPt-O-SF	
781.10	150.05	680.52	631.04	7.88		OSF1.50	9370.00	7284.00				MinPt-CtCt	
782.69	153.93	679.54	628.76	7.69		OSF1.50	9480.00	7284.00				MINPT-O-EOU	
741.54	223.82	591.80	517.72	4.99		OSF1.50	10760.00	7284.00	OSF<5.00			Enter Alert	
731.43	236.62	573.17	494.83	4.66		OSF1.50	11030.00	7284.00				MinPt-CtCt	
734.53	289.05	541.31	445.50	3.82		OSF1.50	11880.00	7284.00				MinPt-CtCt	
747.82	328.47	528.31	419.34	3.42		OSF1.50	12540.00	7284.00				MINPT-O-EOU	
737.63	373.55	488.11	364.13	2.97		OSF1.50	13230.00	7284.00				MinPt-CtCt	
740.19	395.26	476.15	344.93	2.81		OSF1.50	13560.00	7284.00				MinPt-CtCt	
745.47	408.26	472.76	337.21	2.74		OSF1.50	13790.00	7284.00				MINPT-O-EOU	
773.40	489.72	446.39	283.68	2.37		OSF1.50	15000.00	7284.00				MinPt-CtCt	
762.56	558.65	389.59	203.91	2.05		OSF1.50	16070.00	7284.00				MinPt-CtCt	
765.09	566.07	387.18	199.03	2.03		OSF1.50	16210.00	7284.00				MINPT-O-EOU	
782.69	596.65	384.39	186.04	1.97		OSF1.50	16660.00	7284.00				MINPT-O-EOU	
789.04	629.62	368.76	159.42	1.88		OSF1.50	17120.00	7284.00				MinPt-CtCt	
801.34	665.70	357.00	135.64	1.81		OSF1.50	17690.00	7284.00				MinPts	
808.95	660.24	368.25	148.71	1.84		OSF1.50	17780.98	7284.00				TD	

Desha 4-13-3L - Plan (Def Plan)													Warning Alert
336.12	32.81	335.14	303.31	N/A		MAS = 10.00 (m)	0.00	0.00				Surface	
336.11	32.81	335.13	303.31	N/A		MAS = 10.00 (m)	23.00	23.00				WRP	
336.11	32.81	333.25	303.31	178.00		MAS = 10.00 (m)	250.00	250.00				MinPts	
336.23	32.81	333.08	303.42	154.89		MAS = 10.00 (m)	280.00	280.00				MINPT-O-EOU	
137.48	42.22	109.00	95.26	4.96		OSF1.50	3250.00	3172.75	OSF<5.00			Enter Alert	
89.55	57.26	51.05	32.29	2.36		OSF1.50	4100.00	3992.06				MinPt-CtCt	
89.56	57.29	51.04	32.27	2.36		OSF1.50	4110.00	4001.69				MinPts	
89.59	57.32	51.06	32.28	2.36		OSF1.50	4120.00	4011.33				MinPt-O-SF	
212.71	64.71	169.24	148.00	4.98		OSF1.50	5390.00	5235.40	OSF>5.00			Exit Alert	
300.30	91.25	239.14	209.05	4.97		OSF1.50	7160.00	6937.01	OSF<5.00			Enter Alert	
235.72	105.02	165.38	130.70	3.38		OSF1.50	7360.00	7091.14				MinPt-CtCt	
236.14	106.59	164.76	129.55	3.34		OSF1.50	7380.00	7104.52				MinPts	
238.25	107.92	165.97	130.33	3.33		OSF1.50	7400.00	7117.49				MinPt-O-SF	
355.06	107.86	282.82	247.20	4.97		OSF1.50	7630.00	7233.91	OSF>5.00			Exit Alert	
10219.12	108.44	10146.50	10110.68	142.64		OSF1.50	17780.98	7284.00				TD	

Buford 33-10-2L R0 mdv 27Jul22 (Def Plan)													Warning Alert
102.04	32.81	101.05	69.23	N/A		MAS = 10.00 (m)	0.00	0.00				Surface	
102.04	32.81	101.05	69.23	N/A		MAS = 10.00 (m)	23.00	23.00				WRP	
102.04	32.81	99.17	69.23	53.50		MAS = 10.00 (m)	250.00	250.00				MinPts	
102.19	32.81	99.03	69.38	46.45		MAS = 10.00 (m)	280.00	280.00				MINPT-O-EOU	
163.42	32.81	154.57	130.61	20.63		MAS = 10.00 (m)	870.00	868.50				MinPt-O-SF	
286.24	32.81	266.61	253.43	15.30		MAS = 10.00 (m)	1850.00	1823.38				MinPt-O-SF	
581.10	112.44	505.82	468.66	7.81		OSF1.50	6660.00	6459.88				MinPt-O-SF	
985.78	266.71	807.64	719.07	5.56		OSF1.50	11570.00	7284.00				MinPt-CtCt	
991.62	298.32	792.41	693.30	5.00		OSF1.50	12100.00	7284.00	OSF<5.00			Enter Alert	
1055.80	654.92	618.86	400.88	2.42		OSF1.50	17780.00	7284.00				MINPT-O-EOU	
1055.81	654.94	618.86	400.87	2.42		OSF1.50	17780.98	7284.00				MinPts	

Desha 4-4-4L - Plan (Def Plan)													Warning Alert
293.38	32.81	292.40	260.57	N/A		MAS = 10.00 (m)	0.00	0.00				Surface	
293.37	32.81	292.39	260.56	N/A		MAS = 10.00 (m)	23.00	23.00				WRP	
293.37	32.81	290.51	260.56	155.30		MAS = 10.00 (m)	250.00	250.00				MinPts	
293.49	32.81	290.34	260.68	134.98		MAS = 10.00 (m)	280.00	280.00				MINPT-O-EOU	
136.29	41.92	108.02	94.38	4.96		OSF1.50	3520.00	3432.99	OSF<5.00			Enter Alert	
128.69	47.15	96.93	81.54	4.15		OSF1.50	3730.00	3635.43				MinPt-CtCt	
129.41	48.97	96.43	80.44	4.01		OSF1.50	3790.00	3693.27				MINPT-O-EOU	
131.21	51.14	96.78	80.06	3.89		OSF1.50	3860.00	3760.74				MinPt-O-ADP	
144.49	58.89	104.90	85.60	3.72		OSF1.50	4120.00	4011.33				MinPt-O-SF	
273.55	82.80	218.02	190.75	5.00		OSF1.50	5290.00	5139.02	OSF>5.00			Exit Alert	
375.37	113.57	299.32	261.79	4.99		OSF1.50	7100.00	6884.68	OSF<5.00			Enter Alert	
188.51	109.07	115.47	79.44	2.60		OSF1.50	7500.00	7175.78				MinPt-O-SF	
187.16	108.02	114.82	79.15	2.61		OSF1.50	7510.00	7180.98				MinPt-O-ADP	
186.29	106.92	114.63	79.37	2.62		OSF1.50	7520.00	7186.06				MINPT-O-EOU	
185.90	105.79	115.05	80.11	2.65		OSF1.50	7530.00	7191.03				MinPt-CtCt	
314.57	96.49	249.91	218.08	4.93		OSF1.50	7790.00	7275.54	OSF>5.00			Exit Alert	
10186.03	114.34	10109.48	10071.70	134.78		OSF1.50	17780.98	7284.00				TD	

Buford 33-6-2L R0 mdv 27Jul22 (Def Plan)													Warning Alert
153.42	32.81	152.43	120.61	N/A		MAS = 10.00 (m)	0.00	0.00				Surface	
153.42	32.81	152.43	120.61	N/A		MAS = 10.00 (m)	23.00	23.00				WRP	
153.42	32.81	150.54	120.61	80.69		MAS = 10.00 (m)	250.00	250.00				MinPts	
153.56	32.81	150.40	120.76	70.02		MAS = 10.00 (m)	280.00	280.00				MINPT-O-EOU	
271.44	32.81	252.87	238.64	15.38		MAS = 10.00 (m)	1760.00	1736.63				MinPt-O-SF	
1232.12	117.52	1153.44	1114.60	15.85		OSF1.50	6620.00	6420.94				MinPt-O-SF	
1101.66	131.86	1013.42	969.79	12.61		OSF1.50	8650.00	7284.00				MinPt-CtCt	
1102.01	132.86	1013.10	969.14	12.52		OSF1.50	8690.00	7284.00				MINPT-O-EOU	
1156.88	347.86	924.64	809.01	5.00		OSF1.50	12890.00	7284.00	OSF<5.00			Enter Alert	
1100.73	654.74	663.91	445.99	2.52		OSF1.50	17780.98	7284.00				MinPts	

Buford 33-7-3L R0 mdv 27Jul22 (Def Plan)													Warning Alert
159.65	32.81	158.66	126.84	N/A		MAS = 10.00 (m)	0.00	0.00				Surface	
159.65	32.81	158.66	126.84	N/A		MAS = 10.00 (m)	23.00	23.00				WRP	
159.65	32.81	156.27	126.84	66.38		MAS = 10.00 (m)	300.00	300.00				MinPts	
159.79	32.81	156.13	126.98	59.25		MAS = 10.00 (m)	330.00	330.00				MINPT-O-EOU	
245.29	32.81	226.72	212.48	13.89		MAS = 10.00 (m)	1800.00	1775.18				MinPt-O-SF	
891.89	116.67	813.79	775.23	11.53		OSF1.50	6660.00	6459.88				MinPt-O-SF	
806.94	125.07	723.23	681.87	9.74		OSF1.50	8640.00	7284.00				MinPt-CtCt	
807.29	126.30	722.76	680.99	9.65		OSF1.50	8690.00	7284.00				MINPT-O-EOU	
877.08	263.94	700.79	613.14	5.00		OSF1.50	11560.00	7284.00	OSF<5.00			Enter Alert	
806.44	650.18	372.66	156.26	1.86		OSF1.50	17780.98	7284.00				MinPts	

Penrod 4-3 Blind 0' to 8004' - PA (Def Survey)													Warning Alert
2160.80	32.81	2158.99	2128.00	N/A		MAS = 10.00 (m)	0.00	0.00				Surface	
2160.70	32.81	2158.88	2127.89	139012.01		MAS = 10.00 (m)	10.00	10.00				MinPt-O-SF	
2160.64	32.81	2158.82	2127.83	256854.99		MAS = 10.00 (m)	23.00	23.00				WRP	

...Confluence 33-01N-65W (Freedom 33 Pad)\Buford 33-8-2L\Original Hole\Buford 33-8-2L R0 mdv 27Jul22

...Confluence 33-01N-65W (Freedom 33 Pad)\Buford 33-8-2L\Original Hole\Buford 33-8-2L R0 mdv 27Jul22

Offset Trajectory	Separation			Allow Dev. (ft)	Sep. Fact.	Controlling Rule	Reference Trajectory		Risk Level			Alert	Status
	Cl-Ct (ft)	MAS (ft)	EOU (ft)				MD (ft)	TVD (ft)	Alert	Minor	Major		
	1139.07	108.54	1066.38	1030.53	15.87	OSF1.50	7720.00	7261.54				MinPt-CtCt	
	10185.50	139.31	10092.30	10046.19	110.44	OSF1.50	17780.98	7284.00				TD	
Desha 4-9-1L - Plan (Def Plan)													Pass
	231.23	32.81	230.25	198.42	N/A	MAS = 10.00 (m)	0.00	0.00				Surface	
	231.22	32.81	230.23	198.41	N/A	MAS = 10.00 (m)	23.00	23.00				WRP	
	231.22	32.81	228.35	198.41	122.28	MAS = 10.00 (m)	250.00	250.00				MinPts	
	231.33	32.81	228.18	198.52	106.14	MAS = 10.00 (m)	280.00	280.00				MINPT-O-EOU	
	325.92	32.81	307.65	293.11	18.80	MAS = 10.00 (m)	1880.00	1852.29				MinPt-O-SF	
	1091.76	115.07	1014.72	976.69	14.34	OSF1.50	6606.63	6408.03				MinPt-O-SF	
	1097.40	117.91	1018.47	979.49	14.07	OSF1.50	7260.00	7018.40				MinPt-O-SF	
	1072.60	111.34	998.05	961.26	14.57	OSF1.50	7510.00	7180.98				MinPt-O-ADP	
	1072.04	110.70	997.91	961.34	14.64	OSF1.50	7530.00	7191.03				MINPT-O-EOU	
	1071.68	109.75	998.19	961.93	14.77	OSF1.50	7560.00	7205.20				MinPt-CtCt	
	10227.60	136.62	10136.19	10090.98	113.09	OSF1.50	17780.98	7284.00				TD	
Desha 4-11-2L - Plan (Def Plan)													Pass
	271.85	32.81	270.87	239.04	N/A	MAS = 10.00 (m)	0.00	0.00				Surface	
	271.84	32.81	270.86	239.03	N/A	MAS = 10.00 (m)	23.00	23.00				WRP	
	271.84	32.81	268.97	239.03	143.86	MAS = 10.00 (m)	250.00	250.00				MinPts	
	271.95	32.81	268.80	239.15	124.97	MAS = 10.00 (m)	280.00	280.00				MINPT-O-EOU	
	241.54	41.10	213.82	200.44	9.00	OSF1.50	3350.00	3269.14				MinPt-CtCt	
	243.33	46.22	212.19	197.11	8.04	OSF1.50	3600.23	3510.32				MINPT-O-EOU	
	243.67	46.65	212.24	197.02	7.97	OSF1.50	3620.00	3529.37				MinPt-O-ADP	
	312.65	65.82	268.44	246.83	7.21	OSF1.50	4420.00	4300.48				MinPt-O-SF	
	473.53	112.58	398.15	360.95	6.35	OSF1.50	7390.00	7111.05				MinPt-O-SF	
	465.18	108.99	392.19	356.18	6.45	OSF1.50	7460.00	7153.81				MinPt-O-ADP	
	464.77	108.47	392.12	356.29	6.47	OSF1.50	7469.31	7159.09				MINPT-O-EOU	
	464.46	107.29	392.61	357.17	6.54	OSF1.50	7490.00	7170.46				MinPt-CtCt	
	10204.77	120.12	10124.37	10084.66	128.48	OSF1.50	17780.98	7284.00				TD	
Desha 4-15-1 MWD 0' to 11504' - PR (Def Survey)													Pass
	405.68	32.81	403.87	372.87	N/A	MAS = 10.00 (m)	0.00	0.00				Surface	
	405.62	32.81	403.81	372.81	N/A	MAS = 10.00 (m)	23.00	23.00				WRP	
	405.53	32.81	402.25	372.73	274.10	MAS = 10.00 (m)	220.00	220.00				MinPts	
	405.44	32.81	400.76	372.64	140.53	MAS = 10.00 (m)	360.00	360.00				MinPts	
	241.84	32.81	220.13	209.03	11.95	MAS = 10.00 (m)	2160.00	2122.17				MinPts	
	241.96	32.81	219.98	209.15	11.80	MAS = 10.00 (m)	2190.00	2151.08				MINPT-O-EOU	
	267.93	39.81	240.86	228.12	10.46	OSF1.50	2710.00	2652.28				MinPt-O-SF	
	400.67	51.72	365.66	348.95	11.94	OSF1.50	3470.00	3384.80				MinPt-O-SF	
	453.23	56.38	415.11	396.85	12.37	OSF1.50	3770.00	3673.99				MinPt-O-SF	
	570.92	70.18	523.60	500.75	12.45	OSF1.50	4560.00	4435.42				MinPt-O-SF	
	972.33	106.80	900.60	865.54	13.64	OSF1.50	6640.00	6440.36				MinPt-O-SF	
	981.28	107.77	908.90	873.51	13.84	OSF1.50	6700.00	6499.18				MinPt-O-SF	
	995.34	109.32	921.92	886.02	13.84	OSF1.50	6900.00	6598.16				MinPt-O-SF	
	1012.85	112.81	937.11	900.04	13.64	OSF1.50	6940.00	6735.53				MinPts	
	1021.25	115.71	943.58	905.54	13.40	OSF1.50	7100.00	6884.68				MinPt-O-SF	
	10283.19	120.02	10202.63	10163.16	130.23	OSF1.50	17780.98	7284.00				TD	
Desha 4-10-3L - Plan (Def Plan)													Pass
	251.07	32.81	250.08	218.26	N/A	MAS = 10.00 (m)	0.00	0.00				Surface	
	251.06	32.81	250.07	218.25	N/A	MAS = 10.00 (m)	23.00	23.00				WRP	
	251.06	32.81	248.19	218.25	132.82	MAS = 10.00 (m)	250.00	250.00				MinPts	
	251.17	32.81	248.02	218.36	115.32	MAS = 10.00 (m)	280.00	280.00				MINPT-O-EOU	
	304.48	32.81	285.88	271.67	17.23	MAS = 10.00 (m)	2100.00	2064.34				MinPts	
	304.55	32.81	285.81	271.74	17.09	MAS = 10.00 (m)	2150.00	2112.53				MINPT-O-EOU	
	537.45	75.14	487.04	462.32	10.85	OSF1.50	4820.00	4686.02				MinPt-O-SF	
	767.25	114.39	690.66	652.86	10.14	OSF1.50	7400.00	7117.49				MinPt-O-SF	
	746.83	108.76	673.96	638.07	10.38	OSF1.50	7570.00	7209.67				MinPt-O-ADP	
	746.50	108.40	673.91	638.10	10.41	OSF1.50	7580.00	7214.03				MINPT-O-EOU	
	746.17	107.67	674.06	638.50	10.48	OSF1.50	7600.00	7222.36				MinPt-CtCt	
	10195.84	127.49	10110.52	10068.35	120.88	OSF1.50	17780.98	7284.00				TD	
Desha 4-5-4L - Plan (Def Plan)													Pass
	358.98	32.81	357.99	326.17	N/A	MAS = 10.00 (m)	0.00	0.00				Surface	
	358.97	32.81	357.98	326.16	N/A	MAS = 10.00 (m)	23.00	23.00				WRP	
	358.97	32.81	356.10	326.16	190.14	MAS = 10.00 (m)	250.00	250.00				MinPts	
	359.13	32.81	355.88	326.32	158.39	MAS = 10.00 (m)	290.00	290.00				MINPT-O-EOU	
	301.39	32.93	279.11	268.46	14.11	OSF1.50	2500.00	2449.87				MinPt-CtCt	
	301.57	33.53	278.89	268.04	13.85	OSF1.50	2550.00	2498.06				MINPT-O-EOU	
	301.86	33.90	278.93	267.96	13.71	OSF1.50	2580.00	2526.98				MinPt-O-ADP	
	359.53	45.64	328.77	313.89	12.04	OSF1.50	3420.00	3336.60				MinPt-O-SF	
	441.83	56.57	403.79	385.26	11.90	OSF1.50	4180.00	4069.16				MinPt-O-SF	
	826.59	94.16	763.49	732.43	13.29	OSF1.50	6700.00	6499.18				MinPt-O-SF	
	875.03	104.03	805.34	771.00	12.72	OSF1.50	7310.00	7055.94				MinPt-O-SF	
	881.50	104.73	811.35	776.77	12.73	OSF1.50	7360.00	7091.14				MinPt-O-SF	
	10249.65	108.92	10176.71	10140.73	142.43	OSF1.50	17780.98	7284.00				TD	
Robin 9-5HZ IFR1+MS 0' to 18381' - PR (Def Survey)													Pass
	12580.74	175.99	12463.08	12404.75	107.82	OSF1.50	0.00	0.00				MinPt-O-SF	
	12567.07	175.77	12449.56	12391.29	107.84	OSF1.50	23.00	23.00				MinPt-O-SF	
	11278.23	116.59	11200.17	11161.64	146.32	OSF1.50	4700.00	4570.36				MinPt-O-ADP	
	11278.02	116.34	11200.13	11161.68	146.63	OSF1.50	4730.00	4599.27				MINPT-O-EOU	
	11277.85	115.86	11200.28	11161.99	147.25	OSF1.50	4790.00	4657.10				MinPt-CtCt	
	858.85	154.90	755.25	703.95	8.36	OSF1.50	17780.98	7284.00				MinPts	
Robin 9-4HZ IFR1+MS 0' to 18437' - PR (Def Survey)													Pass
	12445.43	172.64	12330.01	12272.79	108.74	OSF1.50	0.00	0.00				MinPt-O-SF	
	12432.01	172.42	12316.73	12259.59	108.77	OSF1.50	23.00	23.00				WRP	
	11228.99	115.79	11151.47	11113.21	146.71	OSF1.50	4460.00	4339.04				MinPt-O-ADP	
	11228.77	115.58	11151.42	11113.24	147.03	OSF1.50	4490.00	4367.95				MINPT-O-EOU	
	11228.57	114.95	11151.61	11113.62	147.78	OSF1.50	4560.00	4435.42				MinPt-CtCt	
	875.32	201.37	740.75	673.95	6.54	OSF1.50	17780.98	7284.00				MinPts	
Robin 9-6HZ IFR1+MS 0' to 18139' - PR (Def Survey)													Pass
	12524.13	172.29	12408.95	12351.84	109.68	OSF1.50	0.00	0.00				MinPt-O-SF	
	12510.74	172.07	12395.70	12338.67	109.68	OSF1.50	23.00	23.00				MinPt-O-SF	

...Confluence 33-01N-65W (Freedom 33 Pad)\Buford 33-8-2L\Original Hole\Buford 33-8-2L R0 mdv 27Jul22

Offset Trajectory	Separation			Allow Dev. (ft)	Sep. Fact.	Controlling Rule	Reference Trajectory		Risk Level			Alert	Status
	Cl-Cl (ft)	MAS (ft)	EOU (ft)				MD (ft)	TVD (ft)	Alert	Minor	Major		
Robin 9-7HZ IFR1+MS 0' to 18107' - PR (Def Survey)	11279.21	114.23	11202.73	11164.98	149.39	OSF1.50	4530.00	4406.50				MinPt-O-ADP	Pass
	11278.93	113.88	11202.65	11165.04	149.84	OSF1.50	4570.00	4445.06				MINPT-O-EOU	
	11278.77	113.37	11202.85	11165.39	150.52	OSF1.50	4630.00	4502.89				MinPt-CiCt	
	938.82	216.60	794.09	722.22	6.52	OSF1.50	17780.98	7284.00				MinPts	
Robin 9-8HZ IFR1+MS 0' to 18257' - PR (Def Survey)	12539.86	170.54	12425.84	12369.32	110.93	OSF1.50	0.00	0.00				MinPt-O-SF	Pass
	12526.56	170.33	12412.68	12356.24	110.95	OSF1.50	23.00	23.00				MinPt-O-SF	
	11299.80	113.04	11224.12	11186.76	151.25	OSF1.50	4520.00	4396.87				MinPt-O-ADP	
	11299.60	112.79	11224.08	11186.81	151.59	OSF1.50	4550.00	4425.78				MINPT-O-EOU	
	11299.41	112.29	11224.22	11187.12	152.26	OSF1.50	4610.00	4483.61				MinPt-CiCt	
	1111.42	330.41	890.82	781.01	5.06	OSF1.50	17780.98	7284.00				MinPts	
Robin 9-9HZ IFR1+MS 0' to 18068' - PR (Def Survey)	12709.13	171.98	12594.15	12537.15	111.48	OSF1.50	0.00	0.00				MinPt-O-SF	Pass
	12695.59	171.78	12580.74	12523.81	111.49	OSF1.50	23.00	23.00				MinPt-O-SF	
	11383.26	115.05	11306.28	11268.21	149.69	OSF1.50	4770.00	4637.82				MinPt-O-ADP	
	11383.07	114.85	11306.15	11268.24	149.97	OSF1.50	4800.00	4666.74				MINPT-O-EOU	
	11382.93	114.40	11306.33	11268.53	150.53	OSF1.50	4860.00	4724.57				MinPt-CiCt	
	1284.73	385.16	1027.63	899.57	5.01	OSF1.50	17780.98	7284.00				MinPts	
Robin 9-10HZ IFR1+MS 0' to 17999' - PR (Def Survey)	12687.09	171.24	12572.60	12515.84	111.77	OSF1.50	0.00	0.00				MinPt-O-SF	Pass
	12673.79	171.05	12559.43	12502.74	111.78	OSF1.50	23.00	23.00				MinPt-O-SF	
	11403.18	117.06	11324.81	11286.12	147.35	OSF1.50	4660.00	4531.80				MinPt-O-ADP	
	11403.00	116.84	11324.78	11286.16	147.62	OSF1.50	4690.00	4560.72				MINPT-O-EOU	
	11402.88	116.50	11324.89	11286.39	148.06	OSF1.50	4740.00	4608.91				MinPt-CiCt	
	1559.41	437.88	1267.16	1121.53	5.35	OSF1.50	17780.98	7284.00				MinPts	
Neckain 1 Blind 0' to 8061' - TA (Def Survey)	6344.89	32.81	6343.08	6312.09	N/A	MAS = 10.00 (m)	0.00	0.00				Surface	Pass
	6344.77	32.81	6342.94	6311.96	369354.57	MAS = 10.00 (m)	23.00	23.00				WRP	
	6314.81	71.70	6266.41	6243.12	135.50	OSF1.50	1230.00	1222.32				MinPt-CiCt	
	6317.01	78.28	6264.22	6238.73	123.89	OSF1.50	1340.00	1329.95				MINPT-O-EOU	
	6319.94	81.86	6264.77	6238.09	118.40	OSF1.50	1400.00	1388.50				MinPt-O-ADP	
	2512.06	517.03	2166.83	1995.02	7.31	OSF1.50	13900.00	7284.00				MinPt-CiCt	
	2512.54	518.45	2166.37	1994.09	7.29	OSF1.50	13950.00	7284.00				MINPT-O-EOU	
	2513.01	519.00	2166.47	1994.01	7.28	OSF1.50	13970.00	7284.00				MinPt-O-ADP	
	2527.52	524.27	2177.47	2003.25	7.25	OSF1.50	14180.00	7284.00				MinPt-O-SF	
	4622.34	512.73	4279.99	4109.61	13.56	OSF1.50	17780.98	7284.00				TD	
Glen Young 1 Blind 0' to 8050' - PA (Def Survey)	9007.01	32.81	9005.20	8974.21	N/A	MAS = 10.00 (m)	0.00	0.00				Surface	Pass
	9006.94	32.81	9005.12	8974.14	978348.98	MAS = 10.00 (m)	20.00	20.00				MinPt-O-SF	
	9006.84	32.81	9005.12	8974.13	992526.50	MAS = 10.00 (m)	23.00	23.00				WRP	
	8990.25	66.93	8945.04	8923.33	207.05	OSF1.50	1140.00	1134.06				MinPt-CiCt	
	8992.47	73.52	8942.86	8918.96	188.08	OSF1.50	1250.00	1241.92				MINPT-O-EOU	
	8995.46	77.11	8943.45	8918.35	179.17	OSF1.50	1310.00	1300.63				MinPt-O-ADP	
	2668.87	599.54	2268.64	2069.33	6.69	OSF1.50	16820.00	7284.00				MinPt-CiCt	
	2669.54	601.68	2267.88	2067.86	6.67	OSF1.50	16880.00	7284.00				MINPT-O-EOU	
	2670.38	602.70	2268.05	2067.68	6.66	OSF1.50	16910.00	7284.00				MinPt-O-ADP	
	2685.66	608.86	2279.22	2076.80	6.63	OSF1.50	17120.00	7284.00				MinPt-O-SF	
	2836.56	616.76	2424.85	2219.80	6.91	OSF1.50	17780.98	7284.00				TD	
Young 01N-65W-28-8N MWD 0' to 11808' - PR (Def Survey)	9555.66	147.00	9457.06	9408.66	98.71	OSF1.50	0.00	0.00				Surface	Pass
	9538.27	147.20	9439.53	9391.07	98.39	OSF1.50	23.00	23.00				WRP	
	6982.59	168.09	6870.00	6814.50	62.90	OSF1.50	6130.00	5948.64				MinPt-CiCt	
	6982.62	168.16	6869.98	6814.46	62.87	OSF1.50	6150.00	5967.91				MINPT-O-EOU	
	6982.65	168.20	6869.99	6814.45	62.86	OSF1.50	6160.00	5977.55				MinPt-O-ADP	
	3106.63	367.36	2861.16	2739.27	12.73	OSF1.50	13350.00	7284.00				MinPt-CiCt	
	3106.78	368.32	2860.70	2738.46	12.70	OSF1.50	13380.00	7284.00				MINPT-O-EOU	
	3106.90	368.48	2860.71	2738.42	12.70	OSF1.50	13390.00	7284.00				MinPts	
	3109.30	369.07	2862.72	2740.23	12.69	OSF1.50	13550.00	7284.00				MinPt-O-SF	
	3113.25	368.27	2867.20	2744.98	12.73	OSF1.50	13910.00	7284.00				MINPT-O-EOU	
	3113.74	368.87	2867.30	2744.87	12.71	OSF1.50	13960.00	7284.00				MinPt-O-ADP	
	3114.14	369.24	2867.44	2744.90	12.70	OSF1.50	13990.00	7284.00				MinPt-O-SF	
	3112.51	367.84	2866.75	2744.67	12.74	OSF1.50	14120.00	7284.00				MinPts	
	3100.89	372.58	2851.97	2728.31	12.53	OSF1.50	14600.00	7284.00				MinPt-O-SF	
	3100.28	372.27	2851.56	2728.01	12.54	OSF1.50	14650.00	7284.00				MinPts	
	3097.90	370.15	2850.60	2727.75	12.60	OSF1.50	14710.00	7284.00				MinPts	
	3063.35	386.75	2804.99	2676.60	11.92	OSF1.50	15380.00	7284.00				MinPt-CiCt	
	3064.34	390.65	2803.37	2673.69	11.81	OSF1.50	15500.00	7284.00				MinPts	
	3047.78	412.98	2771.92	2634.80	11.11	OSF1.50	16340.00	7284.00				MinPt-CiCt	
	3041.57	432.73	2752.55	2608.84	10.58	OSF1.50	16930.00	7284.00				MinPts	
	3013.63	456.55	2708.73	2557.08	9.93	OSF1.50	17520.00	7284.00				MinPts	
	3008.38	466.41	2696.91	2541.98	9.70	OSF1.50	17750.00	7284.00				MinPt-CiCt	
	3008.55	467.93	2696.06	2540.62	9.67	OSF1.50	17780.98	7284.00				MinPts	