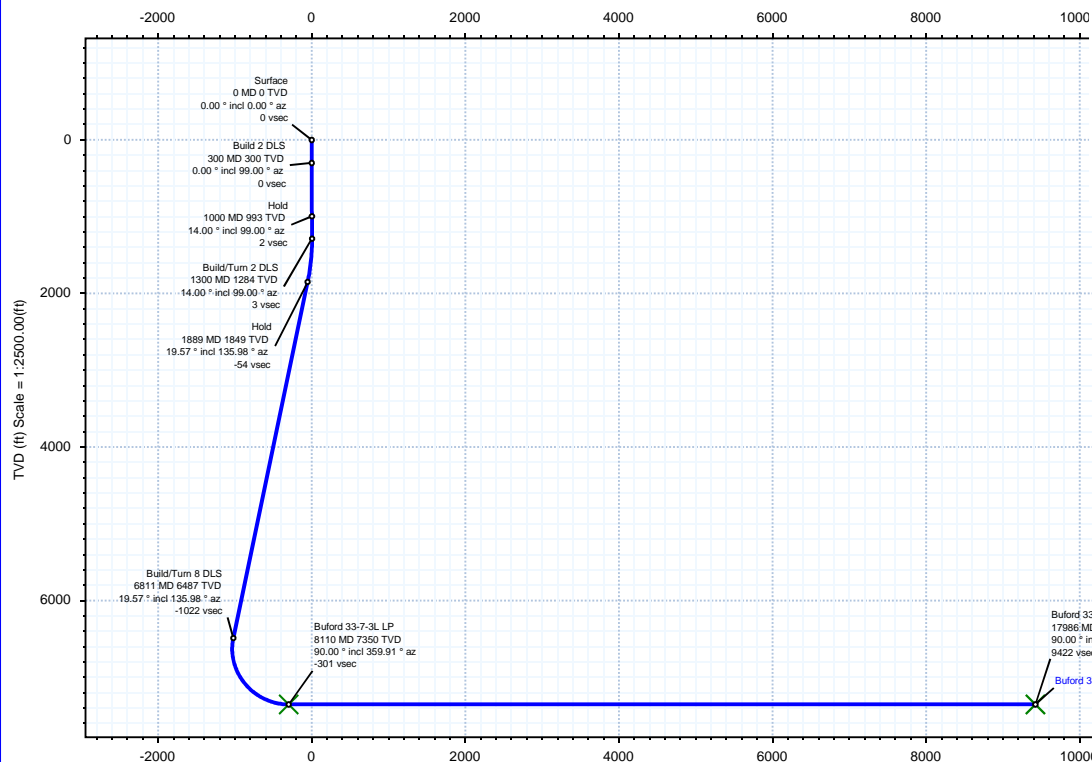


| | | | |
|------------------|----------------|------------------------------------|--|
| Borehole: | Well: | Field: | Structure: |
| Original Hole | Buford 33-7-3L | CO, Weld County (NAD 83 NZ) - 2019 | Confluence 33-01N-65W (Freedom 33 Pad) |

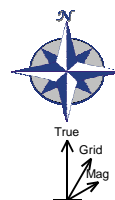
| | | |
|---|---|---|
| Gravity & Magnetic Parameters | Surface Location | Miscellaneous |
| Model: HDGM 2022 Dip: 66.206° Date: 11-Jul-2022 | NAD83 Colorado State Plane, Northern Zone, US Feet | Slot: Buford 33-7-3L TVD Ref: KB = 23ft(5101ft above MSL) |
| MagDec: 7.862° FS: 51573.607nT Gravity FS: 998.983mgn (9.80665 Based) | Lat: N 40 0 11.41 Northing: 1245071.97ftUS Grid Conv: 0.5319° | Plan: Buford 33-7-3L R0 mdv 27Jul22 |
| | Lon: W 104 40 36.52 Easting: 3230605.6ftUS Scale Fact: 0.99996613 | |

| Target Description | | Surface Location | | Grid Coord | | Local Coord | |
|----------------------------------|--------------|------------------|------------|------------|---------|-------------|---------|
| Target Name | | Latitude | Longitude | Northing | Easting | TVD | VSec |
| Freedom 33 Pad Sec 33-28 - CL NS | N 40 0 11.66 | W 104 40 36.52 | 1245097.47 | 3230605.37 | 5101.00 | 25.11 | 25.50 |
| Freedom 33 Pad Sec 33-28 - W2 | N 40 0 11.66 | W 104 40 36.52 | 1245097.47 | 3230605.37 | 5101.00 | 25.11 | 25.50 |
| 350'NSx200'EW SB | N 40 0 10.91 | W 104 40 38.42 | 1245019.60 | 3230457.61 | 5101.00 | -76.04 | -51.00 |
| Freedom 33 Pad Sec 33-28 - CL | N 40 0 10.91 | W 104 40 38.42 | 1245019.60 | 3230457.61 | 5101.00 | -76.04 | -51.00 |
| Buford 33-7-3L BHL | N 40 1 43.10 | W 104 40 15.46 | 1254364.90 | 3232157.61 | 7350.00 | 9421.98 | 1638.27 |
| Buford 33-7-3L LP | N 40 0 5.51 | W 104 40 15.28 | 1244489.98 | 3232263.95 | 7350.00 | -300.87 | -597.38 |

| Critical Points | | | | | | | |
|--------------------|----------|-------|--------|---------|----------|-----------|-----------|
| Critical Point | MD | INCL | AZIM | TVD | VSEC | N(+)/S(-) | E(+)/W(-) |
| Surface | 0.00 | 0.00 | 0.00 | 0.00 | 0.00 | 0.00 | 0.00 |
| Build 2 DLS | 300.00 | 0.00 | 99.00 | 300.00 | 0.00 | 0.00 | 0.00 |
| Hold | 1000.00 | 14.00 | 99.00 | 993.06 | 1.50 | -13.31 | 84.05 |
| Build/Turn 2 DLS | 1300.00 | 14.00 | 99.00 | 1284.14 | 2.79 | -24.67 | 155.73 |
| Hold | 1888.51 | 19.57 | 135.98 | 1848.90 | -54.04 | -106.97 | 295.04 |
| Build/Turn 8 DLS | 6810.96 | 19.57 | 135.98 | 6486.91 | -1022.48 | -1292.74 | 1441.03 |
| Buford 33-7-3L LP | 8110.45 | 90.00 | 359.91 | 7350.00 | -300.87 | -597.38 | 1652.93 |
| Buford 33-7-3L BHL | 17986.29 | 90.00 | 359.91 | 7350.00 | 9421.98 | 9278.46 | 1638.27 |



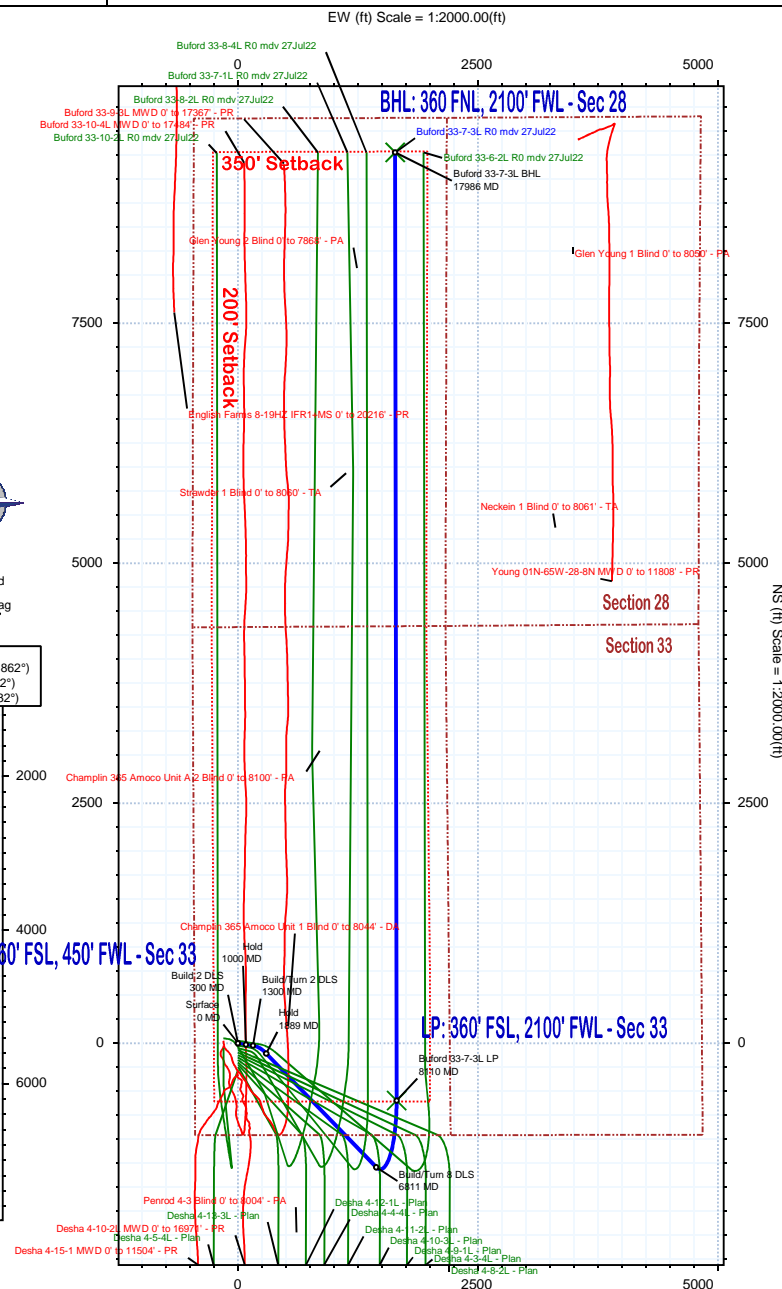
Vertical Section (ft) Azim = 10.01° Scale = 1:2500.00(ft) Origin = 0N/-S, 0E/-W



True North
Tot Corr (M->T) 7.862°
Mag Dec (7.862°)
Grid Conv (0.532°)

SHL: 960' FSL, 450' FWL - Sec 33

LP: 360' FSL, 2100' FWL - Sec 33



Buford 33-7-3L R0 mdv 27Jul22 Proposal Geodetic Report

(Def Plan)

Report Date: August 02, 2022 - 12:24 PM
Client: Confluence DJ
Field: CO, Weld County (NAD 83 NZ) - 2019
Structure / Slot: Confluence 33-01N-65W (Freedom 33 Pad) / Buford 33-7-3L
Well: Buford 33-7-3L
Borehole: Original Hole
UWI / API#: 05-123-45537
Survey Name: Buford 33-7-3L R0 mdv 27Jul22
Survey Date: July 11, 2022
Tort / AHD / DDI / ERD Ratio: 129.730 ° / 12659.531 ft / 6.604 / 1.722
Coordinate Reference System: NAD83 Colorado State Plane, Northern Zone, US Feet
Location Lat / Long: N 40° 0' 11.41200", W 104° 40' 36.51600"
Location Grid N/E Y/X: N 1245071.969 ftUS, E 3230605.602 ftUS
CRS Grid Convergence Angle: 0.5319 °
Grid Scale Factor: 0.99996613
Version / Patch: 2.10.832.2

Survey / DLS Computation: Minimum Curvature / Lubinski
Vertical Section Azimuth: 10.013 ° (True North)
Vertical Section Origin: 0.000 ft, 0.000 ft
TVD Reference Datum: KB = 23ft
TVD Reference Elevation: 5101.000 ft above MSL
Seabed / Ground Elevation: 5078.000 ft above MSL
Magnetic Declination: 7.862 °
Total Gravity Field Strength: 998.9830mgn (9.80665 Based)
Gravity Model: GARM
Total Magnetic Field Strength: 51573.607 nT
Magnetic Dip Angle: 66.206 °
Declination Date: July 11, 2022
Magnetic Declination Model: HDGM 2022
North Reference: True North
Grid Convergence Used: 0.0000 °
Total Corr Mag North->True North: 7.8624 °
Local Coord Referenced To: Well Head

| Comments | MD (ft) | Incl (°) | Azim True (°) | TVD (ft) | TVDSS (ft) | VSEC (ft) | NS (ft) | EW (ft) | DLS (°/100ft) | Northing (ftUS) | Easting (ftUS) | Latitude (°) | Longitude (°) |
|------------------|------------|-------------|------------------|-------------|---------------|--------------|------------|------------|------------------|--------------------|-------------------|-----------------|------------------|
| Surface | 0.00 | 0.00 | 0.00 | 0.00 | -5101.00 | 0.00 | 0.00 | 0.00 | N/A | 1245071.97 | 3230605.60 | 40.003170 | -104.676810 |
| Build 2 DLS | 100.00 | 0.00 | 99.00 | 100.00 | -5001.00 | 0.00 | 0.00 | 0.00 | 0.00 | 1245071.97 | 3230605.60 | 40.003170 | -104.676810 |
| | 200.00 | 0.00 | 99.00 | 200.00 | -4901.00 | 0.00 | 0.00 | 0.00 | 0.00 | 1245071.97 | 3230605.60 | 40.003170 | -104.676810 |
| | 300.00 | 0.00 | 99.00 | 300.00 | -4801.00 | 0.00 | 0.00 | 0.00 | 0.00 | 1245071.97 | 3230605.60 | 40.003170 | -104.676810 |
| | 400.00 | 2.00 | 99.00 | 399.98 | -4701.02 | 0.03 | -0.27 | 1.72 | 2.00 | 1245071.71 | 3230607.33 | 40.003169 | -104.676804 |
| | 500.00 | 4.00 | 99.00 | 499.84 | -4601.16 | 0.12 | -1.09 | 6.89 | 2.00 | 1245070.94 | 3230612.50 | 40.003167 | -104.676785 |
| | 600.00 | 6.00 | 99.00 | 599.45 | -4501.55 | 0.28 | -2.46 | 15.50 | 2.00 | 1245069.66 | 3230621.12 | 40.003163 | -104.676755 |
| | 700.00 | 8.00 | 99.00 | 698.70 | -4402.30 | 0.49 | -4.36 | 27.54 | 2.00 | 1245067.86 | 3230633.18 | 40.003158 | -104.676712 |
| | 800.00 | 10.00 | 99.00 | 797.47 | -4303.53 | 0.77 | -6.81 | 42.99 | 2.00 | 1245065.56 | 3230648.65 | 40.003151 | -104.676657 |
| Hold | 900.00 | 12.00 | 99.00 | 895.62 | -4205.38 | 1.11 | -9.79 | 61.83 | 2.00 | 1245062.75 | 3230667.52 | 40.003143 | -104.676589 |
| | 1000.00 | 14.00 | 99.00 | 993.06 | -4107.94 | 1.50 | -13.31 | 84.05 | 2.00 | 1245059.44 | 3230689.77 | 40.003133 | -104.676510 |
| | 1100.00 | 14.00 | 99.00 | 1090.08 | -4010.92 | 1.93 | -17.10 | 107.94 | 0.00 | 1245055.88 | 3230713.70 | 40.003123 | -104.676425 |
| | 1200.00 | 14.00 | 99.00 | 1187.11 | -3913.89 | 2.36 | -20.88 | 131.84 | 0.00 | 1245052.31 | 3230737.62 | 40.003113 | -104.676339 |
| Build/Turn 2 DLS | 1300.00 | 14.00 | 99.00 | 1284.14 | -3816.86 | 2.79 | -24.67 | 155.73 | 0.00 | 1245048.75 | 3230761.55 | 40.003102 | -104.676254 |
| Hold | 1400.00 | 14.44 | 106.94 | 1381.09 | -3719.91 | 1.50 | -30.19 | 179.61 | 2.00 | 1245043.45 | 3230785.48 | 40.003087 | -104.676169 |
| | 1500.00 | 15.14 | 114.30 | 1477.78 | -3623.22 | -3.23 | -39.20 | 203.44 | 2.00 | 1245034.66 | 3230809.39 | 40.003062 | -104.676084 |
| | 1600.00 | 16.04 | 120.94 | 1574.11 | -3526.89 | -11.39 | -51.68 | 227.20 | 2.00 | 1245022.40 | 3230833.26 | 40.003028 | -104.675999 |
| | 1700.00 | 17.13 | 126.82 | 1669.95 | -3431.05 | -22.97 | -67.61 | 250.85 | 2.00 | 1245006.69 | 3230857.06 | 40.002984 | -104.675915 |
| | 1800.00 | 18.37 | 131.97 | 1765.19 | -3335.81 | -37.95 | -86.98 | 274.36 | 2.00 | 1244987.54 | 3230880.75 | 40.002931 | -104.675831 |
| | 1888.51 | 19.57 | 135.98 | 1848.90 | -3252.10 | -54.04 | -106.97 | 295.04 | 2.00 | 1244967.74 | 3230901.61 | 40.002876 | -104.675757 |
| | 1900.00 | 19.57 | 135.98 | 1859.72 | -3241.28 | -56.30 | -109.74 | 297.71 | 0.00 | 1244965.00 | 3230904.31 | 40.002869 | -104.675747 |
| | 2000.00 | 19.57 | 135.98 | 1953.95 | -3147.05 | -75.98 | -133.83 | 320.99 | 0.00 | 1244941.13 | 3230927.81 | 40.002803 | -104.675664 |
| | 2100.00 | 19.57 | 135.98 | 2048.17 | -3052.83 | -95.65 | -157.92 | 344.27 | 0.00 | 1244917.26 | 3230951.32 | 40.002736 | -104.675581 |
| | 2200.00 | 19.57 | 135.98 | 2142.39 | -2958.61 | -115.33 | -182.01 | 367.56 | 0.00 | 1244893.39 | 3230974.82 | 40.002670 | -104.675498 |
| | 2300.00 | 19.57 | 135.98 | 2236.61 | -2864.39 | -135.00 | -206.10 | 390.84 | 0.00 | 1244869.52 | 3230998.32 | 40.002604 | -104.675415 |
| | 2400.00 | 19.57 | 135.98 | 2330.83 | -2770.17 | -154.67 | -230.19 | 414.12 | 0.00 | 1244845.65 | 3231021.82 | 40.002538 | -104.675332 |
| | 2500.00 | 19.57 | 135.98 | 2425.05 | -2675.95 | -174.35 | -254.28 | 437.40 | 0.00 | 1244821.77 | 3231045.33 | 40.002472 | -104.675249 |
| | 2600.00 | 19.57 | 135.98 | 2519.28 | -2581.72 | -194.02 | -278.36 | 460.68 | 0.00 | 1244797.90 | 3231068.83 | 40.002406 | -104.675166 |
| | 2700.00 | 19.57 | 135.98 | 2613.50 | -2487.50 | -213.70 | -302.45 | 483.96 | 0.00 | 1244774.03 | 3231092.33 | 40.002340 | -104.675083 |
| | 2800.00 | 19.57 | 135.98 | 2707.72 | -2393.28 | -233.37 | -326.54 | 507.24 | 0.00 | 1244750.16 | 3231115.83 | 40.002274 | -104.674999 |
| | 2900.00 | 19.57 | 135.98 | 2801.94 | -2299.06 | -253.04 | -350.63 | 530.52 | 0.00 | 1244726.29 | 3231139.34 | 40.002207 | -104.674916 |
| | 3000.00 | 19.57 | 135.98 | 2896.16 | -2204.84 | -272.72 | -374.72 | 553.80 | 0.00 | 1244702.42 | 3231162.84 | 40.002141 | -104.674833 |
| | 3100.00 | 19.57 | 135.98 | 2990.38 | -2110.62 | -292.39 | -398.81 | 577.08 | 0.00 | 1244678.55 | 3231186.34 | 40.002075 | -104.674750 |
| | 3200.00 | 19.57 | 135.98 | 3084.61 | -2016.39 | -312.07 | -422.90 | 600.36 | 0.00 | 1244654.68 | 3231209.85 | 40.002009 | -104.674667 |
| | 3300.00 | 19.57 | 135.98 | 3178.83 | -1922.17 | -331.74 | -446.99 | 623.65 | 0.00 | 1244630.81 | 3231233.35 | 40.001943 | -104.674584 |
| | 3400.00 | 19.57 | 135.98 | 3273.05 | -1827.95 | -351.41 | -471.08 | 646.93 | 0.00 | 1244606.94 | 3231256.85 | 40.001877 | -104.674501 |
| | 3500.00 | 19.57 | 135.98 | 3367.27 | -1733.73 | -371.09 | -495.16 | 670.21 | 0.00 | 1244583.07 | 3231280.35 | 40.001811 | -104.674418 |
| | 3600.00 | 19.57 | 135.98 | 3461.49 | -1639.51 | -390.76 | -519.25 | 693.49 | 0.00 | 1244559.20 | 3231303.86 | 40.001745 | -104.674335 |
| | 3700.00 | 19.57 | 135.98 | 3555.71 | -1545.29 | -410.44 | -543.34 | 716.77 | 0.00 | 1244535.32 | 3231327.36 | 40.001678 | -104.674252 |
| | 3800.00 | 19.57 | 135.98 | 3649.94 | -1451.06 | -430.11 | -567.43 | 740.05 | 0.00 | 1244511.45 | 3231350.86 | 40.001612 | -104.674168 |
| | 3900.00 | 19.57 | 135.98 | 3744.16 | -1356.84 | -449.78 | -591.52 | 763.33 | 0.00 | 1244487.58 | 3231374.36 | 40.001546 | -104.674085 |
| | 4000.00 | 19.57 | 135.98 | 3838.38 | -1262.62 | -469.46 | -615.61 | 786.61 | 0.00 | 1244463.71 | 3231397.87 | 40.001480 | -104.674002 |
| | 4100.00 | 19.57 | 135.98 | 3932.60 | -1168.40 | -489.13 | -639.70 | 809.89 | 0.00 | 1244439.84 | 3231421.37 | 40.001414 | -104.673919 |
| | 4200.00 | 19.57 | 135.98 | 4026.82 | -1074.18 | -508.80 | -663.79 | 833.17 | 0.00 | 1244415.97 | 3231444.87 | 40.001348 | -104.673836 |
| | 4300.00 | 19.57 | 135.98 | 4121.04 | -979.96 | -528.48 | -687.88 | 856.46 | 0.00 | 1244392.10 | 3231468.38 | 40.001282 | -104.673753 |
| | 4400.00 | 19.57 | 135.98 | 4215.27 | -885.73 | -548.15 | -711.96 | 879.74 | 0.00 | 1244368.23 | 3231491.88 | 40.001216 | -104.673670 |
| | 4500.00 | 19.57 | 135.98 | 4309.49 | -791.51 | -567.83 | -736.05 | 903.02 | 0.00 | 1244344.36 | 3231515.38 | 40.001149 | -104.673587 |
| | 4600.00 | 19.57 | 135.98 | 4403.71 | -697.29 | -587.50 | -760.14 | 926.30 | 0.00 | 1244320.49 | 3231538.88 | 40.001083 | -104.673504 |
| | 4700.00 | 19.57 | 135.98 | 4497.93 | -603.07 | -607.17 | -784.23 | 949.58 | 0.00 | 1244296.62 | 3231562.39 | 40.001017 | -104.673421 |
| | 4800.00 | 19.57 | 135.98 | 4592.15 | -508.85 | -626.85 | -808.32 | 972.86 | 0.00 | 1244272.74 | 3231585.89 | 40.000951 | -104.673337 |
| | 4900.00 | 19.57 | 135.98 | 4686.37 | -414.63 | -646.52 | -832.41 | 996.14 | 0.00 | 1244248.87 | 3231609.39 | 40.000885 | -104.673254 |
| | 5000.00 | 19.57 | 135.98 | 4780.60 | -320.40 | -666.20 | -856.50 | 1019.42 | 0.00 | 1244225.00 | 3231632.89 | 40.000819 | -104.673171 |
| | 5100.00 | 19.57 | 135.98 | 4874.82 | -226.18 | -685.87 | -880.59 | 1042.70 | 0.00 | 1244201.13 | 3231656.40 | 40.000753 | -104.673088 |
| | 5200.00 | 19.57 | 135.98 | 4969.04 | -131.96 | -705.54 | -904.68 | 1065.98 | 0.00 | 1244177.26 | 3231679.90 | 40.000687 | -104.673005 |
| | 5300.00 | 19.57 | 135.98 | 5063.26 | -37.74 | -725.22 | -928.76 | 1089.26 | 0.00 | 1244153.39 | 3231703.40 | 40.000620 | -104.672922 |
| | 5400.00 | 19.57 | 135.98 | 5157.48 | 56.48 | -744.89 | -952.85 | 1112.55 | 0.00 | 1244129.52 | 3231726.91 | 40.000554 | -104.672839 |
| | 5500.00 | 19.57 | 135.98 | 5251.70 | 150.70 | -764.57 | -976.94 | 1135.83 | 0.00 | 1244105.65 | 3231750.41 | 40.000488 | -104.672756 |
| | 5600.00 | 19.57 | 135.98 | 5345.93 | 244.93 | -784.24 | -1001.03 | 1159.11 | 0.00 | 1244081.78 | 3231773.91 | 40.000422 | -104.672673 |
| | 5700.00 | 19.57 | 135.98 | 5440.15 | 339.15 | -803.91 | -1025.12 | 1182.39 | 0.00 | 1244057.91 | 3231797.41 | 40.000356 | -104.672590 |
| | 5800.00 | 19.57 | 135.98 | 5534.37 | 433.37 | -823.59 | -1049.21 | 1205.67 | 0.00 | 1244034.04 | 3231820.92 | 40.000290 | -104.672507 |
| | 5900.00 | 19.57 | 135.98 | 5628.59 | 527.59 | -843.26 | -1073.30 | 1228.95 | 0.00 | 1244010.16 | 3231844.42 | 40.000224 | -104.672423 |
| | 6000.00 | 19.57 | 135.98 | 5722.81 | 621.81 | -862.94 | -1097.39 | 1252.23 | 0.00 | 1243986.29 | 3231867.92 | 40.000157 | -104.672340 |
| | 6100.00 | 19.57 | 135.98 | 5817.03 | 716.03 | -882.61 | -1121.48 | 1275.51 | 0.00 | 1243962.42 | 3231891.42 | 40.000091 | -104.672257 |
| | 6200.00 | 19.57 | 135.98 | 5911.26 | 810.26 | -902.28 | -1145.56 | 1298.79 | 0.00 | 1243938.55 | 3231914.93 | 40.000025 | -104.672174 |
| | 6300.00 | 19.57 | 135.98 | 6005.48 | 904.48 | -921.96 | -1169.65 | 1322.07 | 0.00 | 1243914.68 | 3231938.43 | 39.999959 | -104.672091 |
| | 6400.00 | 19.57 | 135.98 | 6099.70 | 998.70 | -941.63 | -1193.74 | 1345.36 | 0.00 | 1243890.81 | 3231961.93 | 39.999893 | -104.672008 |
| | 6500.00 | 19.57 | 135.98 | 6193.92 | 1092.92 | -961.31 | -1217.83 | 1368.64 | 0.00 | 1243866.94 | 3231985.43 | 39.999827 | -104.671925 |
| 6600.00 | 19.57 | 135.98 | 6288.14 | 1187.14 | -980.39 | -1241.92 | 1391.92 | 0.00 | 1243843.07 | 3232008.94 | 39.999761 | -104.671842 | |
| 6700.00 | 19.57 | 135.98 | 6382.36 | 1281.36 | -1000.65 | -1266.01 | 1415.20 | 0.00 | 1243819.20 | 3232032.44 | 39.999695 | -104.671759 | |
| 6800.00 | 19.57 | 135.98 | 6476.59 | 1375.59 | -1020.33 | -1290.10 | 1438.48 | 0.00 | 1243795.33 | 3232055.94 | 39.999628 | -104.671676 | |
| Build/Turn 8 DLS | 6810.96 | 19.57 | 135.98 | 6486.91 | 1385.91 | -1022.48 | -1292.74 | 1441.03 | 0.00 | 1243792.71 | 3232058.52 | 39.999621 | -104.671667 |
| 6900.00 | 15.42 | 116.50 | | 6571.89 | 1470.89 | -1034.62 | -1308.77 | 1462.02 | 8.00 | 1243776.88 | 32320797.65 | | |

| Comments | MD (ft) | Incl (°) | Azim True (°) | TVD (ft) | TVDSS (ft) | VSEC (ft) | NS (ft) | EW (ft) | DLS (°/100ft) | Northing (ftUS) | Easting (ftUS) | Latitude (°) | Longitude (°) |
|----------------------|------------|-------------|------------------|-------------|---------------|--------------|------------|------------|------------------|--------------------|-------------------|-----------------|------------------|
| Buford 33-7-3L LP | 8110.45 | 90.00 | 359.91 | 7350.00 | 2249.00 | -300.87 | -597.38 | 1652.93 | 8.00 | 1244489.98 | 3232263.95 | 40.001530 | -104.670910 |
| | 8200.00 | 90.00 | 359.91 | 7350.00 | 2249.00 | -212.71 | -507.83 | 1652.80 | 0.00 | 1244579.53 | 3232262.98 | 40.001776 | -104.670910 |
| | 8300.00 | 90.00 | 359.91 | 7350.00 | 2249.00 | -114.25 | -407.83 | 1652.65 | 0.00 | 1244679.52 | 3232261.90 | 40.002050 | -104.670911 |
| | 8400.00 | 90.00 | 359.91 | 7350.00 | 2249.00 | -15.80 | -307.83 | 1652.50 | 0.00 | 1244779.51 | 3232260.83 | 40.002325 | -104.670911 |
| | 8500.00 | 90.00 | 359.91 | 7350.00 | 2249.00 | 82.65 | -207.83 | 1652.35 | 0.00 | 1244879.50 | 3232259.75 | 40.002599 | -104.670912 |
| | 8600.00 | 90.00 | 359.91 | 7350.00 | 2249.00 | 181.10 | -107.83 | 1652.20 | 0.00 | 1244979.49 | 3232258.67 | 40.002874 | -104.670912 |
| | 8700.00 | 90.00 | 359.91 | 7350.00 | 2249.00 | 279.55 | -7.83 | 1652.05 | 0.00 | 1245079.48 | 3232257.60 | 40.003148 | -104.670913 |
| | 8800.00 | 90.00 | 359.91 | 7350.00 | 2249.00 | 378.00 | 92.17 | 1651.90 | 0.00 | 1245179.47 | 3232256.52 | 40.003423 | -104.670913 |
| | 8900.00 | 90.00 | 359.91 | 7350.00 | 2249.00 | 476.45 | 192.17 | 1651.76 | 0.00 | 1245279.46 | 3232255.44 | 40.003697 | -104.670914 |
| | 9000.00 | 90.00 | 359.91 | 7350.00 | 2249.00 | 574.90 | 292.17 | 1651.61 | 0.00 | 1245379.45 | 3232254.37 | 40.003972 | -104.670915 |
| | 9100.00 | 90.00 | 359.91 | 7350.00 | 2249.00 | 673.35 | 392.17 | 1651.46 | 0.00 | 1245479.44 | 3232253.29 | 40.004246 | -104.670915 |
| | 9200.00 | 90.00 | 359.91 | 7350.00 | 2249.00 | 771.80 | 492.17 | 1651.31 | 0.00 | 1245579.43 | 3232252.21 | 40.004521 | -104.670916 |
| | 9300.00 | 90.00 | 359.91 | 7350.00 | 2249.00 | 870.25 | 592.17 | 1651.16 | 0.00 | 1245679.42 | 3232251.14 | 40.004795 | -104.670916 |
| | 9400.00 | 90.00 | 359.91 | 7350.00 | 2249.00 | 968.70 | 692.17 | 1651.01 | 0.00 | 1245779.41 | 3232250.06 | 40.005070 | -104.670917 |
| | 9500.00 | 90.00 | 359.91 | 7350.00 | 2249.00 | 1067.15 | 792.17 | 1650.87 | 0.00 | 1245879.41 | 3232249.98 | 40.005344 | -104.670917 |
| | 9600.00 | 90.00 | 359.91 | 7350.00 | 2249.00 | 1165.61 | 892.17 | 1650.72 | 0.00 | 1245979.40 | 3232249.91 | 40.005619 | -104.670918 |
| | 9700.00 | 90.00 | 359.91 | 7350.00 | 2249.00 | 1264.06 | 992.17 | 1650.57 | 0.00 | 1246079.39 | 3232248.83 | 40.005893 | -104.670918 |
| | 9800.00 | 90.00 | 359.91 | 7350.00 | 2249.00 | 1362.51 | 1092.17 | 1650.42 | 0.00 | 1246179.38 | 3232248.75 | 40.006168 | -104.670919 |
| | 9900.00 | 90.00 | 359.91 | 7350.00 | 2249.00 | 1460.96 | 1192.17 | 1650.27 | 0.00 | 1246279.37 | 3232248.68 | 40.006442 | -104.670919 |
| | 10000.00 | 90.00 | 359.91 | 7350.00 | 2249.00 | 1559.41 | 1292.17 | 1650.12 | 0.00 | 1246379.36 | 3232248.60 | 40.006717 | -104.670920 |
| | 10100.00 | 90.00 | 359.91 | 7350.00 | 2249.00 | 1657.86 | 1392.17 | 1649.98 | 0.00 | 1246479.35 | 3232248.52 | 40.006991 | -104.670920 |
| | 10200.00 | 90.00 | 359.91 | 7350.00 | 2249.00 | 1756.31 | 1492.17 | 1649.83 | 0.00 | 1246579.34 | 3232248.45 | 40.007266 | -104.670921 |
| | 10300.00 | 90.00 | 359.91 | 7350.00 | 2249.00 | 1854.76 | 1592.17 | 1649.68 | 0.00 | 1246679.33 | 3232248.37 | 40.007541 | -104.670921 |
| | 10400.00 | 90.00 | 359.91 | 7350.00 | 2249.00 | 1953.21 | 1692.17 | 1649.53 | 0.00 | 1246779.32 | 3232239.29 | 40.007815 | -104.670922 |
| | 10500.00 | 90.00 | 359.91 | 7350.00 | 2249.00 | 2051.66 | 1792.17 | 1649.38 | 0.00 | 1246879.31 | 3232238.22 | 40.008090 | -104.670922 |
| | 10600.00 | 90.00 | 359.91 | 7350.00 | 2249.00 | 2150.11 | 1892.17 | 1649.23 | 0.00 | 1246979.30 | 3232237.14 | 40.008364 | -104.670923 |
| | 10700.00 | 90.00 | 359.91 | 7350.00 | 2249.00 | 2248.56 | 1992.17 | 1649.08 | 0.00 | 1247079.29 | 3232236.06 | 40.008639 | -104.670923 |
| | 10800.00 | 90.00 | 359.91 | 7350.00 | 2249.00 | 2347.02 | 2092.17 | 1648.94 | 0.00 | 1247179.28 | 3232234.99 | 40.008913 | -104.670924 |
| | 10900.00 | 90.00 | 359.91 | 7350.00 | 2249.00 | 2445.47 | 2192.17 | 1648.79 | 0.00 | 1247279.27 | 3232233.91 | 40.009188 | -104.670924 |
| | 11000.00 | 90.00 | 359.91 | 7350.00 | 2249.00 | 2543.92 | 2292.17 | 1648.64 | 0.00 | 1247379.26 | 3232232.83 | 40.009462 | -104.670925 |
| | 11100.00 | 90.00 | 359.91 | 7350.00 | 2249.00 | 2642.37 | 2392.17 | 1648.49 | 0.00 | 1247479.25 | 3232231.76 | 40.009737 | -104.670925 |
| | 11200.00 | 90.00 | 359.91 | 7350.00 | 2249.00 | 2740.82 | 2492.17 | 1648.34 | 0.00 | 1247579.25 | 3232230.68 | 40.010011 | -104.670926 |
| | 11300.00 | 90.00 | 359.91 | 7350.00 | 2249.00 | 2839.27 | 2592.17 | 1648.19 | 0.00 | 1247679.24 | 3232229.60 | 40.010286 | -104.670926 |
| | 11400.00 | 90.00 | 359.91 | 7350.00 | 2249.00 | 2937.72 | 2692.17 | 1648.05 | 0.00 | 1247779.23 | 3232228.53 | 40.010560 | -104.670927 |
| | 11500.00 | 90.00 | 359.91 | 7350.00 | 2249.00 | 3036.17 | 2792.17 | 1647.90 | 0.00 | 1247879.22 | 3232227.45 | 40.010835 | -104.670927 |
| | 11600.00 | 90.00 | 359.91 | 7350.00 | 2249.00 | 3134.62 | 2892.17 | 1647.75 | 0.00 | 1247979.21 | 3232226.37 | 40.011109 | -104.670928 |
| | 11700.00 | 90.00 | 359.91 | 7350.00 | 2249.00 | 3233.07 | 2992.17 | 1647.60 | 0.00 | 1248079.20 | 3232225.30 | 40.011384 | -104.670928 |
| | 11800.00 | 90.00 | 359.91 | 7350.00 | 2249.00 | 3331.52 | 3092.17 | 1647.45 | 0.00 | 1248179.19 | 3232224.22 | 40.011658 | -104.670929 |
| | 11900.00 | 90.00 | 359.91 | 7350.00 | 2249.00 | 3429.97 | 3192.17 | 1647.30 | 0.00 | 1248279.18 | 3232223.14 | 40.011933 | -104.670929 |
| | 12000.00 | 90.00 | 359.91 | 7350.00 | 2249.00 | 3528.43 | 3292.17 | 1647.15 | 0.00 | 1248379.17 | 3232222.07 | 40.012207 | -104.670930 |
| | 12100.00 | 90.00 | 359.91 | 7350.00 | 2249.00 | 3626.88 | 3392.17 | 1647.01 | 0.00 | 1248479.16 | 3232220.99 | 40.012482 | -104.670930 |
| | 12200.00 | 90.00 | 359.91 | 7350.00 | 2249.00 | 3725.33 | 3492.17 | 1646.86 | 0.00 | 1248579.15 | 3232219.91 | 40.012756 | -104.670931 |
| | 12300.00 | 90.00 | 359.91 | 7350.00 | 2249.00 | 3823.78 | 3592.17 | 1646.71 | 0.00 | 1248679.14 | 3232218.84 | 40.013031 | -104.670931 |
| | 12400.00 | 90.00 | 359.91 | 7350.00 | 2249.00 | 3922.23 | 3692.17 | 1646.56 | 0.00 | 1248779.13 | 3232217.76 | 40.013305 | -104.670932 |
| | 12500.00 | 90.00 | 359.91 | 7350.00 | 2249.00 | 4020.68 | 3792.17 | 1646.41 | 0.00 | 1248879.12 | 3232216.68 | 40.013580 | -104.670932 |
| | 12600.00 | 90.00 | 359.91 | 7350.00 | 2249.00 | 4119.13 | 3892.17 | 1646.26 | 0.00 | 1248979.11 | 3232215.61 | 40.013854 | -104.670933 |
| | 12700.00 | 90.00 | 359.91 | 7350.00 | 2249.00 | 4217.58 | 3992.17 | 1646.12 | 0.00 | 1249079.10 | 3232214.53 | 40.014129 | -104.670933 |
| | 12800.00 | 90.00 | 359.91 | 7350.00 | 2249.00 | 4316.03 | 4092.17 | 1645.97 | 0.00 | 1249179.10 | 3232213.45 | 40.014403 | -104.670934 |
| | 12900.00 | 90.00 | 359.91 | 7350.00 | 2249.00 | 4414.48 | 4192.17 | 1645.82 | 0.00 | 1249279.09 | 3232212.38 | 40.014678 | -104.670934 |
| | 13000.00 | 90.00 | 359.91 | 7350.00 | 2249.00 | 4512.93 | 4292.17 | 1645.67 | 0.00 | 1249379.08 | 3232211.30 | 40.014952 | -104.670935 |
| | 13100.00 | 90.00 | 359.91 | 7350.00 | 2249.00 | 4611.38 | 4392.17 | 1645.52 | 0.00 | 1249479.07 | 3232210.22 | 40.015227 | -104.670935 |
| | 13200.00 | 90.00 | 359.91 | 7350.00 | 2249.00 | 4709.83 | 4492.17 | 1645.37 | 0.00 | 1249579.06 | 3232209.15 | 40.015501 | -104.670936 |
| | 13300.00 | 90.00 | 359.91 | 7350.00 | 2249.00 | 4808.29 | 4592.17 | 1645.23 | 0.00 | 1249679.05 | 3232208.07 | 40.015776 | -104.670936 |
| | 13400.00 | 90.00 | 359.91 | 7350.00 | 2249.00 | 4906.74 | 4692.17 | 1645.08 | 0.00 | 1249779.04 | 3232206.99 | 40.016050 | -104.670937 |
| | 13500.00 | 90.00 | 359.91 | 7350.00 | 2249.00 | 5005.19 | 4792.17 | 1644.93 | 0.00 | 1249879.03 | 3232205.92 | 40.016325 | -104.670937 |
| | 13600.00 | 90.00 | 359.91 | 7350.00 | 2249.00 | 5103.64 | 4892.17 | 1644.78 | 0.00 | 1249979.02 | 3232204.84 | 40.016599 | -104.670938 |
| | 13700.00 | 90.00 | 359.91 | 7350.00 | 2249.00 | 5202.09 | 4992.17 | 1644.63 | 0.00 | 1250079.01 | 3232203.76 | 40.016874 | -104.670938 |
| | 13800.00 | 90.00 | 359.91 | 7350.00 | 2249.00 | 5300.54 | 5092.17 | 1644.48 | 0.00 | 1250179.00 | 3232202.69 | 40.017148 | -104.670939 |
| | 13900.00 | 90.00 | 359.91 | 7350.00 | 2249.00 | 5398.99 | 5192.17 | 1644.33 | 0.00 | 1250278.99 | 3232201.61 | 40.017423 | -104.670939 |
| | 14000.00 | 90.00 | 359.91 | 7350.00 | 2249.00 | 5497.44 | 5292.17 | 1644.19 | 0.00 | 1250378.98 | 3232200.53 | 40.017697 | -104.670940 |
| | 14100.00 | 90.00 | 359.91 | 7350.00 | 2249.00 | 5595.89 | 5392.17 | 1644.04 | 0.00 | 1250478.97 | 3232199.46 | 40.017972 | -104.670940 |
| | 14200.00 | 90.00 | 359.91 | 7350.00 | 2249.00 | 5694.34 | 5492.17 | 1643.89 | 0.00 | 1250578.96 | 3232198.38 | 40.018246 | -104.670941 |
| | 14300.00 | 90.00 | 359.91 | 7350.00 | 2249.00 | 5792.79 | 5592.17 | 1643.74 | 0.00 | 1250678.95 | 3232197.30 | 40.018521 | -104.670941 |
| | 14400.00 | 90.00 | 359.91 | 7350.00 | 2249.00 | 5891.24 | 5692.17 | 1643.59 | 0.00 | 1250778.95 | 3232196.23 | 40.018795 | -104.670942 |
| | 14500.00 | 90.00 | 359.91 | 7350.00 | 2249.00 | 5989.70 | 5792.17 | 1643.44 | 0.00 | 1250878.94 | 3232195.15 | 40.019070 | -104.670942 |
| | 14600.00 | 90.00 | 359.91 | 7350.00 | 2249.00 | 6088.15 | 5892.17 | 1643.30 | 0.00 | 1250978.93 | 3232194.07 | 40.019344 | -104.670943 |
| | 14700.00 | 90.00 | 359.91 | 7350.00 | 2249.00 | 6186.60 | 5992.17 | 1643.15 | 0.00 | 1251078.92 | 3232193.00 | 40.019619 | -104.670943 |
| | 14800.00 | 90.00 | 359.91 | 7350.00 | 2249.00 | 6285.05 | 6092.17 | 1643.00 | 0.00 | 1251178.91 | 3232191.92 | 40.019893 | -104.670944 |
| | 14900.00 | 90.00 | 359.91 | 7350.00 | 2249.00 | 6383.50 | 6192.17 | 1642.85 | 0.00 | 1251278.90 | 3232190.84 | 40.020168 | -104.670944 |
| | 15000.00 | 90.00 | 359.91 | 7350.00 | 2249.00 | 6481.95 | 6292.17 | 1642.70 | 0.00 | 1251378.89 | 3232189.77 | 40.020442 | -104.670945 |
| | 15100.00 | 90.00 | 359.91 | 7350.00 | 2249.00 | 6580.40 | 6392.17 | 1642.55 | 0.00 | 1251478.88 | 3232188.69 | 40.020717 | -104.670945 |
| | 15200.00 | 90.00 | 359.91 | 7350.00 | 2249.00 | 6678.85 | 6492.17 | 1642.40 | 0 | | | | |

| Comments | MD (ft) | Incl (°) | Azim True (°) | TVD (ft) | TVDSS (ft) | VSEC (ft) | NS (ft) | EW (ft) | DLS (°/100ft) | Northing (ftUS) | Easting (ftUS) | Latitude (°) | Longitude (°) |
|----------|------------|-------------|------------------|-------------|---------------|--------------|------------|------------|-------------------------------|--------------------|--|-----------------|------------------|
| | | 1 | 0.000 | 23.000 | 1/100.000 | 13.500 | 9.625 | | B001Mb_MWD+HRGM-Depth Only | | Original Hole / Buford 33-7-3L R0 mdv 27Jul22 | | |
| | | 1 | 23.000 | 1700.000 | 1/100.000 | 13.500 | 9.625 | | B001Mb_MWD+HRGM | | Original Hole / Buford 33-7-3L R0 mdv 27Jul22 | | |
| | | 1 | 1700.000 | 17986.293 | 1/100.000 | 8.500 | 5.500 | | B001Mb_MWD+HRGM | | Original Hole / Buford 33-7-3L R0 mdv 27Jul22 | | |

Buford 33-7-3L R0 mdv 27Jul22 Anti-Collision Summary Report

Analysis Date-24hr Time: August 02, 2022 - 12:24
Client: Confluence DJ
Field: CO, Weld County (NAD 83 NZ) - 2019
Structure: Confluence 33-01N-65W (Freedom 33 Pad)
Slot: Buford 33-7-3L
Well: Buford 33-7-3L
Borehole: Original Hole
Scan MD Range: 0.00ft ~ 17986.29ft

Analysis Method: 3D Least Distance
Reference Trajectory: Buford 33-7-3L R0 mdv 27Jul22 (Def Plan)
Depth Interval: Every 10.00 Measured Depth (ft)
Rule Set: NAL Procedure: D&M AntiCollision Standard S002
Min Pts: All local minima indicated.
Version / Patch: 2.10.832.2
Database \ Project: us1455vsm3175\drilling-CO, Weld County 2.10_RESTORE

Trajectory Error Model: ISCWSA3 3-D 95.000% Confidence 2.7955 sigma, for subject well. For offset wells, error model version is specified with each well respectively.

Offset Selection Criteria

Wellhead distance scan: Not performed!
 Selection filters: Definitive Surveys - Definitive Plans - Definitive surveys exclude definitive plans
 - All Non-Def Surveys when no Def-Survey is set in a borehole - All Non-Def Plans when no Def-Plan is set in a borehole

Offset Trajectories Summary

| Offset Trajectory | Separation | | | Allow Dev. (ft) | Sep. Fact. | Controlling Rule | Reference Trajectory | | Risk Level | | | Alert | Status |
|-------------------|------------|----------|----------|-----------------|------------|------------------|----------------------|----------|------------|-------|-------|-------|--------|
| | Ct-Ct (ft) | MAS (ft) | EOU (ft) | | | | MD (ft) | TVD (ft) | Alert | Minor | Major | | |

Results highlighted: Sep-Factor separation <= 1.50 ft

Buford 33-6-2L R0 mdv 27Jul22

(Def Plan)

| | | | | | | | | | | | | |
|------------|--------|---------|---------|------|--|----------------|----------|---------|-----------------|--|--|-------------|
| Fail Major | | | | | | | | | | | | |
| 25.50 | 20.59 | 24.52 | 4.91 | N/A | | MAS = 6.28 (m) | 0.00 | 0.00 | CtCt<=15m<15.00 | | | Enter Alert |
| 25.50 | 20.59 | 24.52 | 4.91 | N/A | | MAS = 6.28 (m) | 23.00 | 23.00 | | | | WRP |
| 25.19 | 20.59 | 19.85 | 4.59 | 5.56 | | MAS = 6.28 (m) | 500.00 | 499.84 | | | | MinPts |
| 28.99 | 22.22 | 13.85 | 6.77 | 1.98 | | OSF1.50 | 1320.00 | 1303.55 | | | | MINPT-O-EOU |
| 29.32 | 22.61 | 13.92 | 6.71 | 1.97 | | OSF1.50 | 1340.00 | 1322.94 | | | | MinPt-O-ADP |
| 30.03 | 23.22 | 14.23 | 6.82 | 1.98 | | OSF1.50 | 1370.00 | 1352.03 | | | | MinPt-O-SF |
| 79.93 | 36.41 | 55.33 | 43.53 | 3.34 | | OSF1.50 | 2170.00 | 2114.12 | | | | MinPt-O-SF |
| 81.18 | 36.96 | 56.21 | 44.22 | 3.34 | | OSF1.50 | 2210.00 | 2151.81 | | | | MinPt-O-SF |
| 379.15 | 125.83 | 294.93 | 253.32 | 4.54 | | OSF1.50 | 6990.00 | 6659.07 | | | | MinPt-O-SF |
| 383.27 | 127.09 | 298.21 | 256.18 | 4.55 | | OSF1.50 | 7100.00 | 6765.39 | | | | MinPt-O-SF |
| 308.76 | 309.31 | 102.22 | -0.56 | 1.50 | | OSF1.50 | 12390.00 | 7350.00 | OSF<1.50 | | | Enter Minor |
| 308.64 | 462.59 | -0.08 | -153.95 | 1.00 | | OSF1.50 | 14970.00 | 7350.00 | OSF<1.00 | | | Enter Major |
| 308.50 | 647.47 | -123.47 | -338.96 | 0.71 | | OSF1.50 | 17980.00 | 7350.00 | | | | MinPt-CtCt |
| 308.50 | 647.92 | -123.77 | -339.42 | 0.71 | | OSF1.50 | 17986.29 | 7350.00 | | | | MinPts |

Buford 33-8-4L R0 mdv 27Jul22

(Def Plan)

| | | | | | | | | | | | | |
|------------|--------|--------|---------|------|--|----------------|----------|---------|-----------------|--|--|-------------|
| Fail Major | | | | | | | | | | | | |
| 25.50 | 20.59 | 24.52 | 4.91 | N/A | | MAS = 6.28 (m) | 0.00 | 0.00 | CtCt<=15m<15.00 | | | Enter Alert |
| 25.50 | 20.59 | 24.52 | 4.91 | N/A | | MAS = 6.28 (m) | 23.00 | 23.00 | | | | WRP |
| 25.19 | 20.59 | 19.35 | 4.59 | 4.99 | | MAS = 6.28 (m) | 550.00 | 549.68 | | | | MinPts |
| 27.81 | 20.59 | 14.22 | 7.22 | 2.13 | | MAS = 6.28 (m) | 1220.00 | 1206.52 | | | | MINPT-O-EOU |
| 28.61 | 20.67 | 14.51 | 7.96 | 2.11 | | OSF1.50 | 1260.00 | 1245.33 | | | | MinPt-O-SF |
| 298.66 | 127.75 | 213.16 | 170.91 | 3.52 | | OSF1.50 | 7170.00 | 6831.85 | | | | MinPt-O-SF |
| 340.21 | 340.43 | 112.93 | -0.22 | 1.50 | | OSF1.50 | 13210.00 | 7350.00 | OSF<1.50 | | | Enter Minor |
| 340.18 | 509.98 | -0.13 | -169.80 | 1.00 | | OSF1.50 | 16190.00 | 7350.00 | OSF<1.00 | | | Enter Major |
| 340.16 | 614.16 | -69.62 | -274.02 | 0.83 | | OSF1.50 | 17986.29 | 7350.00 | | | | MinPts |

Buford 33-7-1L R0 mdv 27Jul22

(Def Plan)

| | | | | | | | | | | | | |
|------------|--------|--------|--------|-------|--|-----------------|----------|---------|----------|--|--|-------------|
| Fail Minor | | | | | | | | | | | | |
| 51.00 | 32.81 | 50.02 | 18.19 | N/A | | MAS = 10.00 (m) | 0.00 | 0.00 | | | | Surface |
| 51.00 | 32.81 | 50.02 | 18.19 | N/A | | MAS = 10.00 (m) | 23.00 | 23.00 | | | | WRP |
| 50.37 | 32.81 | 44.92 | 17.56 | 11.05 | | MAS = 10.00 (m) | 510.00 | 509.81 | | | | MinPts |
| 50.69 | 32.81 | 44.53 | 17.88 | 9.60 | | MAS = 10.00 (m) | 580.00 | 579.55 | | | | MINPT-O-EOU |
| 65.19 | 32.81 | 56.07 | 32.39 | 7.89 | | MAS = 10.00 (m) | 870.00 | 866.25 | | | | MinPt-O-SF |
| 119.80 | 32.81 | 101.82 | 86.99 | 6.99 | | MAS = 10.00 (m) | 1700.00 | 1669.95 | | | | MinPt-O-SF |
| 544.60 | 118.45 | 465.31 | 426.16 | 6.94 | | OSF1.50 | 6600.00 | 6288.14 | | | | MinPt-O-SF |
| 524.65 | 158.44 | 418.69 | 366.20 | 4.99 | | OSF1.50 | 10090.00 | 7350.00 | OSF<5.00 | | | Enter Alert |
| 484.27 | 408.00 | 211.95 | 76.28 | 1.78 | | OSF1.50 | 14640.00 | 7350.00 | | | | MinPt-CtCt |
| 510.21 | 510.55 | 169.51 | -0.34 | 1.50 | | OSF1.50 | 16320.00 | 7350.00 | OSF<1.50 | | | Enter Minor |
| 536.66 | 614.81 | 126.45 | -78.15 | 1.31 | | OSF1.50 | 17986.29 | 7350.00 | | | | MinPts |

Glen Young 2 Blind 0' to 7868' - PA (Def Survey)

(Def Survey)

| | | | | | | | | | | | | |
|------------|--------|---------|---------|-----------|--|-----------------|----------|---------|----------|--|--|-------------|
| Fail Minor | | | | | | | | | | | | |
| 8167.16 | 32.81 | 8165.35 | 8134.35 | N/A | | MAS = 10.00 (m) | 0.00 | 0.00 | | | | Surface |
| 8166.99 | 32.81 | 8165.15 | 8134.18 | 306008.93 | | MAS = 10.00 (m) | 23.00 | 23.00 | | | | WRP |
| 8166.85 | 32.81 | 8156.58 | 8134.04 | 965.78 | | MAS = 10.00 (m) | 300.00 | 300.00 | | | | MinPts |
| 8171.47 | 80.80 | 8117.00 | 8090.67 | 155.15 | | OSF1.50 | 1400.00 | 1381.09 | | | | MINPT-O-EOU |
| 8173.97 | 83.78 | 8117.51 | 8090.19 | 149.55 | | OSF1.50 | 1450.00 | 1429.47 | | | | MinPt-O-ADP |
| 1524.34 | 460.66 | 1216.70 | 1063.68 | 4.98 | | OSF1.50 | 15310.00 | 7350.00 | OSF<5.00 | | | Enter Alert |
| 539.21 | 539.69 | 178.88 | -0.48 | 1.50 | | OSF1.50 | 16420.00 | 7350.00 | OSF<1.50 | | | Enter Minor |
| 400.94 | 595.78 | 3.22 | -194.84 | 1.01 | | OSF1.50 | 16770.00 | 7350.00 | | | | MinPt-O-ADP |
| 400.80 | 595.60 | 3.19 | -194.80 | 1.01 | | OSF1.50 | 16780.00 | 7350.00 | | | | MinPts |
| 525.13 | 532.14 | 169.83 | -7.01 | 1.48 | | OSF1.50 | 17120.00 | 7350.00 | OSF>1.50 | | | Exit Minor |
| 1270.46 | 458.93 | 963.98 | 811.54 | 4.16 | | OSF1.50 | 17986.29 | 7350.00 | | | | TD |

Strawder 1 Blind 0' to 8060' - TA (Def Survey)

(Def Survey)

| | | | | | | | | | | | | |
|------------|--------|---------|---------|-----------|--|-----------------|----------|---------|----------|--|--|-------------|
| Fail Minor | | | | | | | | | | | | |
| 6043.81 | 32.81 | 6041.99 | 6011.00 | N/A | | MAS = 10.00 (m) | 0.00 | 0.00 | | | | Surface |
| 6043.73 | 32.81 | 6041.91 | 6010.92 | 711511.54 | | MAS = 10.00 (m) | 20.00 | 20.00 | | | | MinPt-O-SF |
| 6043.72 | 32.81 | 6041.90 | 6010.92 | 804315.87 | | MAS = 10.00 (m) | 23.00 | 23.00 | | | | WRP |
| 6040.99 | 77.04 | 5989.03 | 5963.96 | 120.42 | | OSF1.50 | 1300.00 | 1284.14 | | | | MinPt-CtCt |
| 6043.03 | 83.60 | 5986.65 | 5959.43 | 110.80 | | OSF1.50 | 1410.00 | 1390.77 | | | | MINPT-O-EOU |
| 6045.94 | 87.17 | 5987.22 | 5958.77 | 106.21 | | OSF1.50 | 1470.00 | 1448.81 | | | | MinPt-O-ADP |
| 1526.81 | 459.54 | 1219.92 | 1067.27 | 5.00 | | OSF1.50 | 13210.00 | 7350.00 | OSF<5.00 | | | Enter Alert |
| 532.54 | 532.90 | 176.73 | -0.36 | 1.50 | | OSF1.50 | 14520.00 | 7350.00 | OSF<1.50 | | | Enter Minor |
| 517.33 | 536.44 | 159.17 | -19.11 | 1.45 | | OSF1.50 | 14640.00 | 7350.00 | | | | MinPts |
| 517.30 | 536.36 | 159.20 | -19.05 | 1.45 | | OSF1.50 | 14650.00 | 7350.00 | | | | MinPt-CtCt |
| 529.59 | 531.56 | 174.69 | -1.97 | 1.49 | | OSF1.50 | 14760.00 | 7350.00 | OSF>1.50 | | | Exit Minor |
| 1514.57 | 456.70 | 1209.57 | 1057.87 | 4.99 | | OSF1.50 | 16070.00 | 7350.00 | OSF>5.00 | | | Exit Alert |
| 3379.61 | 449.44 | 3079.45 | 2930.17 | 11.31 | | OSF1.50 | 17986.29 | 7350.00 | | | | TD |

Desha 4-9-1L - Plan (Def Plan)

(Def Plan)

| | | | | | | | | | | | | |
|---------------|-------|--------|-------|-------|--|-----------------|--------|--------|--|--|--|-------------|
| Warning Alert | | | | | | | | | | | | |
| 123.88 | 32.81 | 122.90 | 91.07 | N/A | | MAS = 10.00 (m) | 0.00 | 0.00 | | | | Surface |
| 123.86 | 32.81 | 122.87 | 91.05 | N/A | | MAS = 10.00 (m) | 23.00 | 23.00 | | | | WRP |
| 123.85 | 32.81 | 120.95 | 91.05 | 65.26 | | MAS = 10.00 (m) | 250.00 | 250.00 | | | | MinPts |
| 124.20 | 32.81 | 120.65 | 91.39 | 48.04 | | MAS = 10.00 (m) | 320.00 | 320.00 | | | | MINPT-O-EOU |

...Confluence 33-01N-65W (Freedom 33 Pad)\Buford 33-7-3L\Original Hole\Buford 33-7-3L R0 mdv 27Jul22

| Offset Trajectory | Separation | | | Allow Dev. (ft) | Sep. Fact. | Controlling Rule | Reference Trajectory | | Risk Level | | | Alert | Status |
|-------------------|------------|----------|----------|--------------------|---------------|---------------------|----------------------|----------|------------|-------|-------|-------------|--------|
| | Ct-Ct (ft) | MAS (ft) | EOU (ft) | | | | MD (ft) | TVD (ft) | Alert | Minor | Major | | |
| 117.18 | 35.93 | 92.90 | 81.25 | 4.99 | | OSF1.50 | 2470.00 | 2396.79 | OSF<5.00 | | | Enter Alert | |
| 62.47 | 41.90 | 34.21 | 20.58 | 2.25 | | OSF1.50 | 3340.00 | 3216.52 | | | | MinPt-CtCt | |
| 65.73 | 50.70 | 31.60 | 15.03 | 1.95 | | OSF1.50 | 3520.00 | 3386.11 | | | | MINPT-O-EQU | |
| 70.11 | 55.93 | 32.49 | 14.18 | 1.89 | | OSF1.50 | 3620.00 | 3480.34 | | | | MinPt-O-ADP | |
| 73.46 | 58.89 | 33.87 | 14.57 | 1.88 | | OSF1.50 | 3680.00 | 3536.87 | | | | MinPt-O-SF | |
| 166.89 | 128.99 | 80.57 | 37.91 | 1.94 | | OSF1.50 | 7420.00 | 7051.14 | | | | MinPt-O-SF | |
| 165.27 | 127.46 | 79.97 | 37.81 | 1.95 | | OSF1.50 | 7430.00 | 7059.08 | | | | MinPts | |
| 163.80 | 123.72 | 80.99 | 40.08 | 1.99 | | OSF1.50 | 7450.00 | 7074.71 | | | | MinPt-CtCt | |
| 315.45 | 95.71 | 251.32 | 219.74 | 4.98 | | OSF1.50 | 7730.00 | 7254.18 | OSF>5.00 | | | Exit Alert | |
| 10225.69 | 142.73 | 10130.21 | 10082.97 | 108.20 | | OSF1.50 | 17986.29 | 7350.00 | | | | TD | |

Desha 4-10-3L - Plan (Def Plan)

| Warning Alert | | | | | | | | | | | | |
|---------------|--------|----------|----------|--------|-----------------|----------|---------|----------|--|--|--|-------------|
| 149.38 | 32.81 | 148.39 | 116.57 | N/A | MAS = 10.00 (m) | 0.00 | 0.00 | | | | | Surface |
| 149.36 | 32.81 | 148.37 | 116.55 | N/A | MAS = 10.00 (m) | 23.00 | 23.00 | | | | | WRP |
| 149.36 | 32.81 | 146.49 | 116.55 | 78.81 | MAS = 10.00 (m) | 250.00 | 250.00 | | | | | MinPts |
| 149.64 | 32.81 | 146.19 | 116.83 | 60.27 | MAS = 10.00 (m) | 310.00 | 310.00 | | | | | MINPT-O-EOU |
| 131.30 | 40.26 | 104.13 | 91.04 | 4.98 | OSF1.50 | 2500.00 | 2425.05 | OSF<5.00 | | | | Enter Alert |
| 63.49 | 51.62 | 28.74 | 11.86 | 1.85 | OSF1.50 | 3380.00 | 3254.20 | | | | | MinPt-O-SF |
| 63.35 | 51.50 | 28.69 | 11.85 | 1.85 | OSF1.50 | 3390.00 | 3263.63 | | | | | MinPt-O-ADP |
| 63.24 | 51.37 | 28.67 | 11.87 | 1.85 | OSF1.50 | 3400.00 | 3273.05 | | | | | MINPT-O-EOU |
| 63.03 | 50.77 | 28.85 | 12.26 | 1.87 | OSF1.50 | 3440.00 | 3310.74 | | | | | MinPt-CtCt |
| 263.96 | 79.93 | 210.34 | 184.03 | 5.00 | OSF1.50 | 5540.00 | 5289.39 | OSF>5.00 | | | | Exit Alert |
| 359.05 | 109.51 | 285.72 | 249.55 | 4.95 | OSF1.50 | 7220.00 | 6878.33 | | | | | Enter Alert |
| 164.67 | 119.39 | 84.75 | 45.29 | 2.07 | OSF1.50 | 7580.00 | 7167.84 | OSF<5.00 | | | | MinPt-CtCt |
| 166.06 | 123.37 | 83.48 | 42.68 | 2.02 | OSF1.50 | 7600.00 | 7180.74 | | | | | MINPT-O-EOU |
| 167.64 | 125.14 | 83.88 | 42.49 | 2.01 | OSF1.50 | 7610.00 | 7187.04 | | | | | MinPts |
| 436.24 | 131.73 | 348.09 | 304.51 | 4.99 | OSF1.50 | 8000.00 | 7341.75 | OSF>5.00 | | | | Exit Alert |
| 10211.17 | 134.93 | 10120.89 | 10076.24 | 114.34 | OSF1.50 | 17986.29 | 7350.00 | | | | | TD |

Desha 4-3-4L - Plan (Def Plan)

| Desha 4-3-4L - Plan (Def Plan) | | | | | | | | | | | | | Warning Alert | |
|--------------------------------|----------|--------|----------|----------|--------|-----------------|----------|---------|----------|----------|--|--|---------------|-------------|
| | 98.39 | 32.81 | 97.40 | 65.58 | N/A | MAS = 10.00 (m) | 0.00 | 0.00 | | | | | Surface | |
| | 98.36 | 32.81 | 97.37 | 65.55 | N/A | MAS = 10.00 (m) | 23.00 | 23.00 | | | | | WRP | |
| | 98.36 | 32.81 | 95.48 | 65.55 | 51.72 | MAS = 10.00 (m) | 250.00 | 250.00 | | | | | MinPts | |
| | 98.77 | 32.81 | 95.12 | 65.96 | 36.72 | MAS = 10.00 (m) | 330.00 | 330.00 | | | | | MINPT-O-EOU | |
| | 107.04 | 32.85 | 84.81 | 74.19 | 4.99 | OSF1.50 | 2320.00 | 2255.45 | OSF<5.00 | | | | Enter Alert | |
| | 78.70 | 35.19 | 54.91 | 43.50 | 3.41 | OSF1.50 | 2920.00 | 2820.78 | | | | | MinPt-CtCt | |
| | 80.28 | 39.09 | 53.89 | 41.19 | 3.12 | OSF1.50 | 3050.00 | 2943.27 | | | | | MINPT-O-EOU | |
| | 83.52 | 42.92 | 54.58 | 40.60 | 2.95 | OSF1.50 | 3150.00 | 3037.49 | | | | | MinPt-O-ADP | |
| | 98.65 | 53.49 | 62.66 | 45.16 | 2.79 | OSF1.50 | 3410.00 | 3282.47 | | | | | MinPt-O-SF | |
| | 470.70 | 141.91 | 375.77 | 328.79 | 5.00 | OSF1.50 | 6750.00 | 6429.47 | OSF>5.00 | | | | Exit Alert | |
| | 483.71 | 146.04 | 386.03 | 337.67 | 4.99 | OSF1.50 | 6920.00 | 6591.20 | | OSF<5.00 | | | | Enter Alert |
| | 267.84 | 138.70 | 175.05 | 129.14 | 2.91 | OSF1.50 | 7610.00 | 7187.04 | | | | | | MinPt-O-SF |
| | 257.93 | 132.22 | 169.46 | 125.71 | 2.94 | OSF1.50 | 7650.00 | 7211.18 | | | | | MinPt-O-ADP | |
| | 254.74 | 128.62 | 168.66 | 126.12 | 2.98 | OSF1.50 | 7670.00 | 7222.60 | | | | | MINPT-O-EOU | |
| | 252.47 | 121.27 | 171.29 | 131.20 | 3.14 | OSF1.50 | 7710.00 | 7244.11 | | | | | MinPt-CtCt | |
| | 370.06 | 112.02 | 295.06 | 258.05 | 4.99 | OSF1.50 | 7980.00 | 7338.50 | OSF>5.00 | | | | Exit Alert | |
| | 10177.59 | 145.07 | 10080.55 | 10032.52 | 105.94 | OSF1.50 | 17986.29 | 7350.00 | | | | | | TD |

Buford 33-10-4L MWD 0' to 17484' - PR (Def Survey)

| Buford 33-10-4L MWD 0' to 17484' - PR (Def Survey) | | | | | | | | | | | | | Warning Alert |
|--|--------|---------|---------|-------|-----------------|----------|---------|----------|--|--|--|-------------|---------------|
| 150.66 | 32.81 | 148.84 | 117.85 | N/A | MAS = 10.00 (m) | 0.00 | 0.00 | | | | | Surface | |
| 150.65 | 32.81 | 148.84 | 117.85 | N/A | MAS = 10.00 (m) | 23.00 | 23.00 | | | | | WRP | |
| 149.53 | 32.81 | 145.60 | 116.72 | 69.84 | MAS = 10.00 (m) | 310.00 | 310.00 | | | | | MinPts | |
| 149.65 | 32.81 | 145.44 | 116.84 | 61.49 | MAS = 10.00 (m) | 340.00 | 340.00 | | | | | MINPT-O-EOU | |
| 277.33 | 32.81 | 264.42 | 244.52 | 24.82 | MAS = 10.00 (m) | 1210.00 | 1196.82 | | | | | MinPt-O-SF | |
| 386.29 | 32.81 | 369.13 | 353.48 | 25.05 | MAS = 10.00 (m) | 1640.00 | 1612.51 | | | | | MinPt-O-SF | |
| 813.68 | 53.11 | 777.74 | 760.57 | 23.65 | OSF1.50 | 3660.00 | 3518.03 | | | | | MinPt-O-SF | |
| 1124.50 | 82.61 | 1068.89 | 1041.89 | 20.79 | OSF1.50 | 5230.00 | 4997.31 | | | | | MinPt-O-SF | |
| 1562.31 | 123.01 | 1479.76 | 1439.29 | 19.28 | OSF1.50 | 7750.00 | 7263.78 | | | | | MinPt-O-SF | |
| 1572.60 | 124.40 | 1489.13 | 1448.20 | 19.19 | OSF1.50 | 8140.00 | 7350.00 | | | | | MinPt-O-SF | |
| 1571.35 | 125.27 | 1487.31 | 1446.09 | 19.04 | OSF1.50 | 8410.00 | 7350.00 | | | | | MinPt-CtCt | |
| 1571.49 | 125.74 | 1487.13 | 1445.75 | 18.97 | OSF1.50 | 8450.00 | 7350.00 | | | | | MINPT-O-EOU | |
| 1571.70 | 125.97 | 1487.18 | 1445.73 | 18.94 | OSF1.50 | 8470.00 | 7350.00 | | | | | MinPt-O-ADP | |
| 1575.88 | 150.00 | 1475.34 | 1425.88 | 15.91 | OSF1.50 | 9390.00 | 7350.00 | | | | | MinPt-CtCt | |
| 1577.51 | 156.90 | 1472.37 | 1420.61 | 15.22 | OSF1.50 | 9580.00 | 7350.00 | | | | | MINPT-O-EOU | |
| 1578.89 | 158.56 | 1472.65 | 1420.33 | 15.07 | OSF1.50 | 9630.00 | 7350.00 | | | | | MinPt-O-ADP | |
| 1568.00 | 242.08 | 1406.08 | 1325.93 | 9.77 | OSF1.50 | 11170.00 | 7350.00 | | | | | MinPt-CtCt | |
| 1569.39 | 246.17 | 1404.74 | 1323.22 | 9.62 | OSF1.50 | 11270.00 | 7350.00 | | | | | MINPT-O-EOU | |
| 1570.28 | 247.55 | 1404.72 | 1322.73 | 9.57 | OSF1.50 | 11300.00 | 7350.00 | | | | | MINPT-O-EOU | |
| 1579.12 | 300.83 | 1378.03 | 1278.28 | 7.91 | OSF1.50 | 12120.00 | 7350.00 | | | | | MinPt-CtCt | |
| 1566.73 | 387.35 | 1307.96 | 1179.38 | 6.09 | OSF1.50 | 13460.00 | 7350.00 | | | | | MinPt-CtCt | |
| 1566.55 | 409.71 | 1292.87 | 1156.84 | 5.75 | OSF1.50 | 13800.00 | 7350.00 | | | | | MinPt-CtCt | |
| 1581.85 | 441.98 | 1286.65 | 1139.87 | 5.38 | OSF1.50 | 14340.00 | 7350.00 | | | | | MINPT-O-EOU | |
| 1593.35 | 479.61 | 1273.08 | 1113.75 | 5.00 | OSF1.50 | 14830.00 | 7350.00 | OSF<5.00 | | | | Enter Alert | |
| 1584.09 | 508.71 | 1244.41 | 1075.37 | 4.68 | OSF1.50 | 15280.00 | 7350.00 | | | | | MinPt-CtCt | |
| 1560.12 | 578.08 | 1174.20 | 982.04 | 4.06 | OSF1.50 | 16310.00 | 7350.00 | | | | | MinPt-CtCt | |
| 1562.41 | 585.31 | 1171.67 | 977.10 | 4.01 | OSF1.50 | 16460.00 | 7350.00 | | | | | MINPT-O-EOU | |
| 1565.65 | 590.41 | 1171.51 | 975.24 | 3.98 | OSF1.50 | 16550.00 | 7350.00 | | | | | MINPT-O-EOU | |
| 1575.62 | 653.65 | 1139.32 | 921.97 | 3.62 | OSF1.50 | 17420.00 | 7350.00 | | | | | MinPt-CtCt | |
| 1582.04 | 685.21 | 1124.70 | 896.83 | 3.47 | OSF1.50 | 17910.00 | 7350.00 | | | | | MinPts | |
| 1585.33 | 684.71 | 1128.33 | 900.63 | 3.48 | OSF1.50 | 17986.29 | 7350.00 | | | | | TD | |

Buford 33-9-3L MWD 0' to 17367' - PR (Def Survey)

| Warning Alert | | | | | | | | | | | | |
|---------------|--------|---------|---------|-------|-----------------|---------|---------|--|--|--|--|-------------|
| Warning Alert | | | | | | | | | | | | |
| 153.42 | 32.81 | 151.61 | 120.61 | N/A | MAS = 10.00 (m) | 0.00 | 0.00 | | | | | Surface |
| 153.42 | 32.81 | 151.60 | 120.61 | N/A | MAS = 10.00 (m) | 23.00 | 23.00 | | | | | WRP |
| 152.20 | 32.81 | 148.03 | 119.39 | 63.73 | MAS = 10.00 (m) | 320.00 | 320.00 | | | | | MinPts |
| 152.32 | 32.81 | 147.86 | 119.51 | 56.73 | MAS = 10.00 (m) | 350.00 | 350.00 | | | | | MINPT-O-EQU |
| 305.42 | 32.81 | 291.67 | 272.61 | 25.43 | MAS = 10.00 (m) | 1290.00 | 1274.44 | | | | | MinPt-O-SF |
| 363.19 | 32.81 | 347.14 | 330.38 | 25.38 | MAS = 10.00 (m) | 1520.00 | 1497.08 | | | | | MinPt-O-SF |
| 381.10 | 32.81 | 364.35 | 348.29 | 25.39 | MAS = 10.00 (m) | 1590.00 | 1564.50 | | | | | MinPt-O-SF |
| 406.88 | 32.81 | 389.10 | 374.08 | 25.37 | MAS = 10.00 (m) | 1690.00 | 1660.39 | | | | | MinPt-O-SF |
| 853.50 | 79.26 | 800.12 | 774.24 | 16.45 | OSF1.50 | 5080.00 | 4855.97 | | | | | MinPt-O-SF |
| 1081.75 | 111.96 | 1006.57 | 969.79 | 14.68 | OSF1.50 | 6770.00 | 6448.32 | | | | | MinPt-O-SF |
| 1136.87 | 115.84 | 1059.11 | 1021.03 | 14.91 | OSF1.50 | 7300.00 | 6950.32 | | | | | MinPt-O-SF |
| 1131.15 | 123.40 | 1048.35 | 1007.75 | 13.91 | OSF1.50 | 8130.00 | 7350.00 | | | | | MinPt-Ct-Cf |
| 1131.25 | 123.67 | 1048.27 | 1007.58 | 13.88 | OSF1.50 | 8160.00 | 7350.00 | | | | | MINPT-O-EQU |
| 1131.32 | 123.75 | 1048.29 | 1007.58 | 13.87 | OSF1.50 | 8170.00 | 7350.00 | | | | | MinPt-O-ADP |
| 1131.76 | 123.97 | 1048.58 | 1007.79 | 13.85 | OSF1.50 | 8210.00 | 7350.00 | | | | | MinPt-O-Sf |
| 1126.26 | 124.77 | 1042.54 | 1001.49 | 13.70 | OSF1.50 | 8440.00 | 7350.00 | | | | | MinPt-Ct-Cf |
| 1126.38 | 125.14 | 1042.42 | 1001.24 | 13.66 | OSF1.50 | 8470.00 | 7350.00 | | | | | MINPT-O-EQU |
| 1127.52 | 126.45 | 1042.69 | 1001.07 | 13.53 | OSF1.50 | 8580.00 | 7350.00 | | | | | MinPt-O-ADP |

...Confluence 33-01N-65W (Freedom 33 Pad)\Buford 33-7-3L\Original Hole\Buford 33-7-3L R0 mdv 27Jul22

| Offset Trajectory | Separation | | | Allow Dev. (ft) | Sep. Fact. | Controlling Rule | Reference Trajectory | | Risk Level | | | Alert | Status | |
|---|------------|----------|----------|-----------------|------------|------------------|----------------------|----------|------------|-------|-------|-------------|---------------|---------------|
| | Ct-Ct (ft) | MAS (ft) | EOU (ft) | | | | MD (ft) | TVD (ft) | Alert | Minor | Major | | | |
| Robin 9-5HZ IFR1+MS 0' to 18381' - PR (Def Survey) | | | | | | | | | | | | | | |
| | 12609.73 | 175.29 | 12492.54 | 12434.44 | 108.51 | OSF1.50 | 0.00 | 0.00 | | | | MinPt-O-SF | Warning Alert | |
| | 12596.09 | 175.07 | 12479.04 | 12421.01 | 108.52 | OSF1.50 | 23.00 | 23.00 | | | | MinPt-O-SF | | |
| | 11291.58 | 121.98 | 11209.93 | 11169.60 | 139.97 | OSF1.50 | 4840.00 | 4629.84 | | | | MinPt-O-ADP | | |
| | 11291.52 | 121.90 | 11209.92 | 11169.61 | 140.06 | OSF1.50 | 4860.00 | 4648.69 | | | | MINPT-O-EOU | | |
| | 11291.49 | 121.83 | 11209.94 | 11169.66 | 140.14 | OSF1.50 | 4880.00 | 4667.53 | | | | MinPt-CtCt | | |
| | 1224.28 | 368.53 | 978.27 | 855.75 | 4.99 | OSF1.50 | 17840.00 | 7350.00 | OSF<5.00 | | | Enter Alert | | |
| | 1111.30 | 400.08 | 844.26 | 711.23 | 4.17 | OSF1.50 | 17986.29 | 7350.00 | | | | MinPts | | |
| Robin 9-10HZ IFR1+MS 0' to 17999' - PR (Def Survey) | | | | | | | | | | | | | | |
| | 12694.93 | 171.55 | 12580.24 | 12523.38 | 111.64 | OSF1.50 | 0.00 | 0.00 | | | | MinPt-O-SF | Warning Alert | |
| | 12681.81 | 171.35 | 12567.24 | 12510.45 | 111.65 | OSF1.50 | 23.00 | 23.00 | | | | MinPt-O-SF | | |
| | 11351.20 | 120.07 | 11270.82 | 11231.12 | 142.96 | OSF1.50 | 4980.00 | 4761.75 | | | | MinPt-O-ADP | | |
| | 11351.17 | 120.05 | 11270.81 | 11231.13 | 143.00 | OSF1.50 | 4990.00 | 4771.17 | | | | MINPT-O-EOU | | |
| | 11351.16 | 119.99 | 11270.83 | 11231.16 | 143.06 | OSF1.50 | 5010.00 | 4790.02 | | | | MinPt-CtCt | | |
| | 1184.13 | 356.76 | 945.96 | 827.37 | 4.99 | OSF1.50 | 17970.00 | 7350.00 | OSF<5.00 | | | Enter Alert | | |
| | 1172.23 | 360.73 | 931.42 | 811.50 | 4.88 | OSF1.50 | 17986.29 | 7350.00 | | | | MinPts | | |
| Robin 9-4HZ IFR1+MS 0' to 18437' - PR (Def Survey) | | | | | | | | | | | | | | |
| | 12478.37 | 172.08 | 12363.32 | 12306.29 | 109.39 | OSF1.50 | 0.00 | 0.00 | | | | MinPt-O-SF | Warning Alert | |
| | 12464.98 | 171.85 | 12350.08 | 12293.13 | 109.42 | OSF1.50 | 23.00 | 23.00 | | | | WRP | | |
| | 11258.13 | 121.68 | 11176.69 | 11136.46 | 139.91 | OSF1.50 | 4560.00 | 4366.02 | | | | MinPt-O-ADP | | |
| | 11258.07 | 121.60 | 11176.67 | 11136.47 | 140.00 | OSF1.50 | 4580.00 | 4384.86 | | | | MINPT-O-EOU | | |
| | 11258.03 | 121.49 | 11176.71 | 11136.55 | 140.13 | OSF1.50 | 4610.00 | 4413.13 | | | | MinPt-CtCt | | |
| | 1412.15 | 425.40 | 1128.23 | 986.76 | 4.99 | OSF1.50 | 17860.00 | 7350.00 | OSF<5.00 | | | Enter Alert | | |
| | 1328.44 | 449.72 | 1028.30 | 878.72 | 4.44 | OSF1.50 | 17986.29 | 7350.00 | | | | MinPts | | |
| Robin 9-3HZ IFR1+MS 0' to 18437' - PR (Def Survey) | | | | | | | | | | | | | | |
| | 12512.96 | 179.56 | 12392.93 | 12333.40 | 105.10 | OSF1.50 | 0.00 | 0.00 | | | | MinPt-O-SF | Warning Alert | |
| | 12499.42 | 179.33 | 12379.54 | 12320.09 | 105.12 | OSF1.50 | 23.00 | 23.00 | | | | MinPt-O-SF | | |
| | 11279.26 | 128.68 | 11193.15 | 11150.59 | 132.49 | OSF1.50 | 4590.00 | 4394.29 | | | | MinPt-O-ADP | | |
| | 11279.19 | 128.59 | 11193.13 | 11150.60 | 132.57 | OSF1.50 | 4610.00 | 4413.13 | | | | MINPT-O-EOU | | |
| | 11279.15 | 128.47 | 11193.17 | 11150.68 | 132.70 | OSF1.50 | 4640.00 | 4441.40 | | | | MinPt-CtCt | | |
| | 1572.63 | 475.35 | 1255.41 | 1097.28 | 4.97 | OSF1.50 | 17930.00 | 7350.00 | OSF<5.00 | | | Enter Alert | | |
| | 1541.64 | 484.49 | 1218.32 | 1057.15 | 4.78 | OSF1.50 | 17986.29 | 7350.00 | | | | MinPts | | |
| Necklein 1 Blind 0' to 8061' - TA (Def Survey) | | | | | | | | | | | | | | |
| | 6307.07 | 32.81 | 6305.25 | 6274.26 | N/A | MAS = 10.00 (m) | 0.00 | 0.00 | | | | Surface | Warning Alert | |
| | 6306.94 | 32.81 | 6305.11 | 6274.13 | 364962.79 | MAS = 10.00 (m) | 23.00 | 23.00 | | | | WRP | | |
| | 6235.57 | 92.40 | 6173.36 | 6143.17 | 103.22 | OSF1.50 | 1580.00 | 1554.88 | | | | MinPt-CtCt | | |
| | 6237.50 | 98.93 | 6170.94 | 6138.57 | 96.31 | OSF1.50 | 1690.00 | 1660.39 | | | | MINPT-O-EOU | | |
| | 6240.74 | 102.80 | 6171.68 | 6137.95 | 92.48 | OSF1.50 | 1760.00 | 1727.18 | | | | MinPt-O-ADP | | |
| | 1691.55 | 509.17 | 1351.57 | 1182.38 | 4.99 | OSF1.50 | 13770.00 | 7350.00 | OSF<5.00 | | | Enter Alert | | |
| | 1663.80 | 521.51 | 1315.59 | 1142.29 | 4.80 | OSF1.50 | 14080.00 | 7350.00 | | | | MinPt-CtCt | | |
| | 1664.16 | 522.52 | 1315.27 | 1141.64 | 4.79 | OSF1.50 | 14110.00 | 7350.00 | | | | MINPT-O-EOU | | |
| | 1664.69 | 523.17 | 1315.38 | 1141.53 | 4.78 | OSF1.50 | 14130.00 | 7350.00 | | | | MinPt-O-ADP | | |
| | 1670.08 | 525.85 | 1318.98 | 1144.23 | 4.77 | OSF1.50 | 14220.00 | 7350.00 | | | | MinPt-O-SF | | |
| | 1770.31 | 532.99 | 1414.45 | 1237.32 | 4.99 | OSF1.50 | 14680.00 | 7350.00 | OSF>5.00 | | | Exit Alert | | |
| | 4250.30 | 494.00 | 3920.43 | 3756.29 | 12.94 | OSF1.50 | 17986.29 | 7350.00 | | | | TD | | |
| Glen Young 1 Blind 0' to 8050' - PA (Def Survey) | | | | | | | | | | | | | | |
| | 8993.83 | 32.81 | 8992.02 | 8961.03 | N/A | MAS = 10.00 (m) | 0.00 | 0.00 | | | | Surface | | Warning Alert |
| | 8993.77 | 32.81 | 8991.94 | 8960.96 | 975487.78 | MAS = 10.00 (m) | 20.00 | 20.00 | | | | MinPt-O-SF | | |
| | 8993.76 | 32.81 | 8991.94 | 8960.95 | 989623.85 | MAS = 10.00 (m) | 23.00 | 23.00 | | | | WRP | | |
| | 8952.90 | 85.87 | 8895.05 | 8867.03 | 159.73 | OSF1.50 | 1460.00 | 1439.14 | | | | MinPt-CtCt | | |
| | 8955.19 | 93.01 | 8892.53 | 8862.18 | 147.26 | OSF1.50 | 1580.00 | 1554.88 | | | | MINPT-O-EOU | | |
| | 8958.15 | 96.57 | 8893.16 | 8861.57 | 141.77 | OSF1.50 | 1640.00 | 1612.51 | | | | MinPt-O-ADP | | |
| | 1913.24 | 575.78 | 1528.85 | 1337.46 | 4.99 | OSF1.50 | 16520.00 | 7350.00 | OSF<5.00 | | | Enter Alert | | |
| | 1853.97 | 603.35 | 1451.21 | 1250.62 | 4.62 | OSF1.50 | 16990.00 | 7350.00 | | | | MinPt-CtCt | | |
| | 1854.58 | 605.46 | 1450.40 | 1249.12 | 4.60 | OSF1.50 | 17040.00 | 7350.00 | | | | MINPT-O-EOU | | |
| | 1855.20 | 606.26 | 1450.49 | 1248.94 | 4.60 | OSF1.50 | 17060.00 | 7350.00 | | | | MinPt-O-ADP | | |
| | 1862.45 | 610.05 | 1455.21 | 1252.40 | 4.59 | OSF1.50 | 17170.00 | 7350.00 | | | | MinPt-O-SF | | |
| | 2038.49 | 613.03 | 1629.28 | 1425.47 | 5.00 | OSF1.50 | 17840.00 | 7350.00 | OSF>5.00 | | | Exit Alert | | |
| | 2103.53 | 610.02 | 1696.31 | 1493.51 | 5.18 | OSF1.50 | 17986.29 | 7350.00 | | | | TD | | |
| Desha 4-8-2L - Plan (Def Plan) | | | | | | | | | | | | | | |
| | 72.90 | 32.81 | 71.92 | 40.09 | N/A | MAS = 10.00 (m) | 0.00 | 0.00 | | | | Surface | Pass | |
| | 72.86 | 32.81 | 71.87 | 40.05 | N/A | MAS = 10.00 (m) | 23.00 | 23.00 | | | | WRP | | |
| | 72.86 | 32.81 | 69.99 | 40.05 | 38.17 | MAS = 10.00 (m) | 250.00 | 250.00 | | | | MinPts | | |
| | 73.34 | 32.81 | 69.59 | 40.53 | 26.20 | MAS = 10.00 (m) | 340.00 | 340.00 | | | | MINPT-O-EOU | | |
| | 126.34 | 32.81 | 106.38 | 93.53 | 6.61 | MAS = 10.00 (m) | 2270.00 | 2208.34 | | | | MinPts | | |
| | 126.34 | 32.81 | 106.39 | 93.53 | 6.61 | MAS = 10.00 (m) | 2280.00 | 2217.77 | | | | MinPt-O-SF | | |
| | 224.52 | 59.13 | 184.77 | 165.39 | 5.77 | OSF1.50 | 3640.00 | 3499.18 | | | | MinPt-O-SF | | |
| | 567.91 | 144.19 | 471.46 | 423.72 | 5.94 | OSF1.50 | 7430.00 | 7059.08 | | | | MinPt-O-SF | | |
| | 539.82 | 131.67 | 451.70 | 408.14 | 6.18 | OSF1.50 | 7580.00 | 7167.84 | | | | MinPt-O-ADP | | |
| | 538.17 | 129.75 | 451.34 | 408.42 | 6.26 | OSF1.50 | 7600.00 | 7180.74 | | | | MINPT-O-EOU | | |
| | 536.85 | 125.87 | 452.60 | 410.97 | 6.44 | OSF1.50 | 7640.00 | 7205.30 | | | | MinPt-CtCt | | |
| | 10194.76 | 153.07 | 10092.39 | 10041.69 | 100.54 | OSF1.50 | 17986.29 | 7350.00 | | | | TD | | |
| Desha 4-11-2L - Plan (Def Plan) | | | | | | | | | | | | | | |
| | 174.88 | 32.81 | 173.89 | 142.07 | N/A | MAS = 10.00 (m) | 0.00 | 0.00 | | | | Surface | | Pass |
| | 174.86 | 32.81 | 173.87 | 142.05 | N/A | MAS = 10.00 (m) | 23.00 | 23.00 | | | | WRP | | |
| | 174.86 | 32.81 | 171.95 | 142.05 | 92.35 | MAS = 10.00 (m) | 250.00 | 250.00 | | | | MinPts | | |
| | 175.08 | 32.81 | 171.73 | 142.27 | 73.52 | MAS = 10.00 (m) | 300.00 | 300.00 | | | | MINPT-O-EOU | | |
| | 175.32 | 46.76 | 143.82 | 128.56 | 5.71 | OSF1.50 | 3040.00 | 2933.85 | | | | MinPt-CtCt | | |
| | 175.51 | 47.38 | 143.59 | 128.13 | 5.64 | OSF1.50 | 3100.00 | 2990.38 | | | | MINPT-O-EOU | | |
| | 175.76 | 47.68 | 143.64 | 128.08 | 5.61 | OSF1.50 | 3130.00 | 3018.65 | | | | MinPt-O-ADP | | |
| | 178.75 | 49.06 | 145.72 | 129.70 | 5.55 | OSF1.50 | 3290.00 | 3169.41 | | | | MinPt-O-SF | | |
| | 460.69 | 117.64 | 381.94 | 343.05 | 5.91 | OSF1.50 | 7460.00 | 7082.41 | | | | MinPt-CtCt | | |
| | 460.88 | 118.22 | 381.74 | 342.66 | 5.88 | OSF1.50 | 7470.00 | 7090.02 | | | | MINPT-O-EOU | | |
| | 461.28 | 118.76 | 381.78 | 342.52 | 5.86 | OSF1.50 | 7480.00 | 7097.55 | | | | MinPt-O-ADP | | |
| | 466.37 | 121.08 | 385.32 | 345.29 | 5.81 | OSF1.50 | 7530.00 | 7133.86 | | | | MinPt-O-SF | | |
| | 10238.36 | 129.44 | 10151.74 | 10108.92 | 119.54 | OSF1.50 | 17986.29 | 7350.00 | | | | TD | | |
| Desha 4-4-4L - Plan (Def Plan) | | | | | | | | | | | | | | |
| | | | | | | | | | | | | | Pass | |

| Offset Trajectory | Separation | | | Allow Dev. (ft) | Sep. Fact. | Controlling Rule | Reference Trajectory | | Risk Level | | | Alert | Status |
|---|------------|----------|----------|-----------------|------------|------------------|----------------------|----------|------------|-------|-------|-------------|--------|
| | Cl-Cl (ft) | MAS (ft) | EOU (ft) | | | | MD (ft) | TVD (ft) | Alert | Minor | Major | | |
| | 200.37 | 32.81 | 199.39 | 167.57 | N/A | MAS = 10.00 (m) | 0.00 | 0.00 | | | | Surface | |
| | 200.36 | 32.81 | 199.37 | 167.55 | N/A | MAS = 10.00 (m) | 23.00 | 23.00 | | | | WRP | |
| | 200.36 | 32.81 | 197.49 | 167.55 | 105.89 | MAS = 10.00 (m) | 250.00 | 250.00 | | | | MinPts | |
| | 200.61 | 32.81 | 197.26 | 167.80 | 84.39 | MAS = 10.00 (m) | 300.00 | 300.00 | | | | MINPT-O-EOU | |
| | 251.52 | 38.56 | 225.48 | 212.95 | 10.00 | OSF1.50 | 2550.00 | 2472.16 | | | | MinPt-CiCl | |
| | 251.83 | 39.43 | 225.21 | 212.40 | 9.79 | OSF1.50 | 2620.00 | 2538.12 | | | | MINPT-O-EOU | |
| | 252.14 | 39.80 | 225.27 | 212.33 | 9.71 | OSF1.50 | 2650.00 | 2566.39 | | | | MinPt-O-SF | |
| | 271.18 | 45.41 | 240.58 | 225.77 | 9.12 | OSF1.50 | 3140.00 | 3028.07 | | | | MinPt-O-ADP | |
| | 743.54 | 113.91 | 667.27 | 629.63 | 9.86 | OSF1.50 | 7580.00 | 7167.84 | | | | MinPt-CiCl | |
| | 743.85 | 114.71 | 667.05 | 629.14 | 9.80 | OSF1.50 | 7600.00 | 7180.74 | | | | MINPT-O-EOU | |
| | 744.18 | 115.09 | 667.13 | 629.09 | 9.77 | OSF1.50 | 7610.00 | 7187.04 | | | | MinPt-O-ADP | |
| | 757.49 | 119.00 | 677.83 | 638.49 | 9.62 | OSF1.50 | 7730.00 | 7254.18 | | | | MinPt-O-SF | |
| | 10235.92 | 125.76 | 10151.75 | 10110.16 | 123.04 | OSF1.50 | 17986.29 | 7350.00 | | | | TD | |
| Desha 4-12-1L - Plan (Def Plan) | | | | | | | | | | | | | Pass |
| | 225.89 | 32.81 | 224.91 | 193.08 | N/A | MAS = 10.00 (m) | 0.00 | 0.00 | | | | Surface | |
| | 225.88 | 32.81 | 224.89 | 193.07 | N/A | MAS = 10.00 (m) | 23.00 | 23.00 | | | | WRP | |
| | 225.86 | 32.81 | 223.01 | 193.07 | 119.45 | MAS = 10.00 (m) | 250.00 | 250.00 | | | | MinPts | |
| | 226.05 | 32.81 | 222.80 | 193.24 | 99.29 | MAS = 10.00 (m) | 290.00 | 290.00 | | | | MINPT-O-EOU | |
| | 300.89 | 36.15 | 276.46 | 264.74 | 12.79 | OSF1.50 | 2390.00 | 2321.41 | | | | MinPt-CiCl | |
| | 301.20 | 37.03 | 276.19 | 264.17 | 12.49 | OSF1.50 | 2460.00 | 2387.37 | | | | MINPT-O-EOU | |
| | 301.63 | 37.53 | 276.28 | 264.10 | 12.34 | OSF1.50 | 2500.00 | 2425.05 | | | | MinPt-O-ADP | |
| | 343.73 | 47.48 | 311.75 | 296.25 | 11.06 | OSF1.50 | 3290.00 | 3169.41 | | | | MinPt-O-SF | |
| | 855.86 | 115.13 | 778.78 | 740.73 | 11.23 | OSF1.50 | 7240.00 | 6896.62 | | | | MinPt-CiCl | |
| | 855.96 | 115.42 | 778.68 | 740.53 | 11.21 | OSF1.50 | 7250.00 | 6905.70 | | | | MINPT-O-EOU | |
| | 856.17 | 115.70 | 778.70 | 740.46 | 11.18 | OSF1.50 | 7260.00 | 6914.73 | | | | MinPt-O-ADP | |
| | 861.72 | 117.38 | 783.14 | 744.34 | 11.09 | OSF1.50 | 7340.00 | 6984.99 | | | | MinPt-O-SF | |
| | 10288.57 | 124.79 | 10205.05 | 10163.78 | 124.64 | OSF1.50 | 17986.29 | 7350.00 | | | | TD | |
| Desha 4-13-3L - Plan (Def Plan) | | | | | | | | | | | | | Pass |
| | 247.74 | 32.81 | 246.76 | 214.94 | N/A | MAS = 10.00 (m) | 0.00 | 0.00 | | | | Surface | |
| | 247.73 | 32.81 | 246.75 | 214.92 | N/A | MAS = 10.00 (m) | 23.00 | 23.00 | | | | WRP | |
| | 247.73 | 32.81 | 244.86 | 214.92 | 131.06 | MAS = 10.00 (m) | 250.00 | 250.00 | | | | MinPts | |
| | 247.93 | 32.81 | 244.68 | 215.12 | 109.08 | MAS = 10.00 (m) | 290.00 | 290.00 | | | | MINPT-O-EOU | |
| | 358.63 | 32.81 | 337.65 | 325.82 | 17.89 | MAS = 10.00 (m) | 1980.00 | 1935.10 | | | | MinPts | |
| | 358.76 | 32.81 | 337.58 | 325.96 | 17.71 | MAS = 10.00 (m) | 2020.00 | 1972.79 | | | | MINPT-O-EOU | |
| | 440.75 | 43.85 | 411.18 | 396.89 | 15.39 | OSF1.50 | 3130.00 | 3018.65 | | | | MinPt-O-SF | |
| | 1176.42 | 110.91 | 1102.15 | 1065.51 | 16.04 | OSF1.50 | 7350.00 | 6993.50 | | | | MinPt-CiCl | |
| | 1176.71 | 111.75 | 1101.89 | 1064.96 | 15.92 | OSF1.50 | 7380.00 | 7018.63 | | | | MINPT-O-EOU | |
| | 1176.93 | 112.00 | 1101.93 | 1064.93 | 15.89 | OSF1.50 | 7390.00 | 7026.87 | | | | MinPt-O-ADP | |
| | 1188.03 | 114.61 | 1111.30 | 1073.43 | 15.67 | OSF1.50 | 7540.00 | 7140.85 | | | | MinPt-O-SF | |
| | 10298.29 | 123.72 | 10215.48 | 10174.57 | 125.85 | OSF1.50 | 17986.29 | 7350.00 | | | | TD | |
| Desha 4-5-4L - Plan (Def Plan) | | | | | | | | | | | | | Pass |
| | 273.24 | 32.81 | 272.26 | 240.43 | N/A | MAS = 10.00 (m) | 0.00 | 0.00 | | | | Surface | |
| | 273.23 | 32.81 | 272.25 | 240.42 | N/A | MAS = 10.00 (m) | 23.00 | 23.00 | | | | WRP | |
| | 273.23 | 32.81 | 270.36 | 240.42 | 144.60 | MAS = 10.00 (m) | 250.00 | 250.00 | | | | MinPts | |
| | 273.34 | 32.81 | 270.19 | 240.54 | 125.68 | MAS = 10.00 (m) | 280.00 | 280.00 | | | | MINPT-O-EOU | |
| | 461.91 | 32.81 | 442.12 | 429.10 | 24.51 | MAS = 10.00 (m) | 1880.00 | 1840.88 | | | | MinPt-O-SF | |
| | 1725.78 | 99.65 | 1659.01 | 1626.13 | 26.22 | OSF1.50 | 6900.00 | 6571.89 | | | | MinPt-O-SF | |
| | 1865.38 | 110.66 | 1791.28 | 1754.72 | 25.50 | OSF1.50 | 7710.00 | 7244.11 | | | | MinPt-O-SF | |
| | 10372.44 | 128.98 | 10286.13 | 10243.47 | 121.55 | OSF1.50 | 17986.29 | 7350.00 | | | | TD | |
| Desha 4-10-2L MWD 0' to 16971' - PR (Def Survey) | | | | | | | | | | | | | Pass |
| | 298.90 | 32.81 | 297.08 | 266.09 | N/A | MAS = 10.00 (m) | 0.00 | 0.00 | | | | Surface | |
| | 298.73 | 32.81 | 296.92 | 265.92 | N/A | MAS = 10.00 (m) | 23.00 | 23.00 | | | | MinPts | |
| | 290.30 | 32.81 | 280.81 | 257.50 | 37.58 | MAS = 10.00 (m) | 840.00 | 836.81 | | | | MinPts | |
| | 290.48 | 32.81 | 280.68 | 257.67 | 36.14 | MAS = 10.00 (m) | 870.00 | 866.25 | | | | MINPT-O-EOU | |
| | 355.24 | 32.81 | 335.68 | 322.43 | 19.70 | MAS = 10.00 (m) | 1800.00 | 1765.19 | | | | MinPt-O-SF | |
| | 432.17 | 38.37 | 406.05 | 393.80 | 17.57 | OSF1.50 | 2580.00 | 2500.43 | | | | MinPt-O-SF | |
| | 532.82 | 44.88 | 502.37 | 487.95 | 18.41 | OSF1.50 | 3040.00 | 2933.85 | | | | MinPt-O-SF | |
| | 635.31 | 52.60 | 599.70 | 582.70 | 18.64 | OSF1.50 | 3510.00 | 3376.69 | | | | MinPt-O-SF | |
| | 673.03 | 56.24 | 635.00 | 616.79 | 18.43 | OSF1.50 | 3730.00 | 3583.98 | | | | MinPt-O-SF | |
| | 849.24 | 68.25 | 803.20 | 780.98 | 19.08 | OSF1.50 | 4480.00 | 4290.64 | | | | MinPt-O-SF | |
| | 899.38 | 72.40 | 850.58 | 826.99 | 19.02 | OSF1.50 | 4740.00 | 4535.62 | | | | MinPt-O-SF | |
| | 1043.76 | 82.78 | 988.04 | 960.98 | 19.26 | OSF1.50 | 5370.00 | 5129.22 | | | | MinPt-O-SF | |
| | 1231.76 | 96.37 | 1166.98 | 1135.39 | 19.47 | OSF1.50 | 6160.00 | 5873.57 | | | | MinPt-O-SF | |
| | 1341.35 | 104.22 | 1271.34 | 1237.13 | 19.58 | OSF1.50 | 6640.00 | 6325.83 | | | | MinPt-O-SF | |
| | 1443.27 | 117.64 | 1364.30 | 1325.63 | 18.64 | OSF1.50 | 7180.00 | 6841.22 | | | | MinPt-CiCl | |
| | 1443.49 | 118.45 | 1363.95 | 1325.04 | 18.51 | OSF1.50 | 7220.00 | 6878.33 | | | | MINPT-O-EOU | |
| | 1443.80 | 118.82 | 1364.05 | 1324.98 | 18.46 | OSF1.50 | 7240.00 | 6896.62 | | | | MinPt-O-ADP | |
| | 1456.92 | 121.65 | 1375.29 | 1335.27 | 18.18 | OSF1.50 | 7450.00 | 7074.71 | | | | MinPt-O-SF | |
| | 8174.53 | 129.42 | 8087.72 | 8045.11 | 95.91 | OSF1.50 | 15820.00 | 7350.00 | | | | MinPt-O-SF | |
| | 10292.15 | 132.44 | 10203.32 | 10159.71 | 117.98 | OSF1.50 | 17986.29 | 7350.00 | | | | TD | |
| Desha 4-15-1 MWD 0' to 11504' - PR (Def Survey) | | | | | | | | | | | | | Pass |
| | 324.30 | 32.81 | 322.49 | 291.49 | N/A | MAS = 10.00 (m) | 0.00 | 0.00 | | | | Surface | |
| | 324.23 | 32.81 | 322.42 | 291.42 | N/A | MAS = 10.00 (m) | 23.00 | 23.00 | | | | WRP | |
| | 316.31 | 32.81 | 307.54 | 283.50 | 45.18 | MAS = 10.00 (m) | 770.00 | 767.89 | | | | MinPts | |
| | 316.70 | 32.81 | 307.20 | 283.89 | 40.97 | MAS = 10.00 (m) | 840.00 | 836.81 | | | | MINPT-O-EOU | |
| | 374.21 | 32.81 | 355.02 | 341.40 | 21.19 | MAS = 10.00 (m) | 1750.00 | 1717.66 | | | | MinPt-O-SF | |
| | 381.01 | 32.81 | 361.50 | 348.20 | 21.19 | MAS = 10.00 (m) | 1800.00 | 1765.19 | | | | MinPt-O-SF | |
| | 489.36 | 34.51 | 465.82 | 454.85 | 22.23 | OSF1.50 | 2340.00 | 2274.30 | | | | MinPt-O-SF | |
| | 828.32 | 52.41 | 792.84 | 775.90 | 24.41 | OSF1.50 | 3530.00 | 3395.54 | | | | MinPt-O-SF | |
| | 923.31 | 57.25 | 884.61 | 866.06 | 24.84 | OSF1.50 | 3850.00 | 3697.05 | | | | MinPt-O-SF | |
| | 1138.18 | 70.10 | 1090.92 | 1068.09 | 24.80 | OSF1.50 | 4560.00 | 4366.02 | | | | MinPt-O-SF | |
| | 1583.12 | 93.17 | 1520.47 | 1489.95 | 25.91 | OSF1.50 | 5930.00 | 5656.86 | | | | MinPt-O-SF | |
| | 1771.49 | 103.17 | 1702.18 | 1668.32 | 26.14 | OSF1.50 | 6500.00 | 6193.92 | | | | MinPt-O-SF | |
| | 1871.71 | 109.87 | 1797.93 | 1761.84 | 26.91 | OSF1.50 | 6810.00 | 6486.01 | | | | MinPt-O-SF | |
| | 1925.02 | 112.64 | 1849.39 | 1812.38 | 25.98 | OSF1.50 | 7000.00 | 6688.78 | | | | MinPt-O-SF | |
| | 1952.49 | 116.49 | 1874.30 | 1836.00 | 25.47 | OSF1.50 | 7110.00 | 6774.97 | | | | MinPt-O-ADP | |
| | 1966.41 | 117.81 | 1887.34 | 1848.61 | 25.36 | OSF1.50 | 7190.00 | 6850.56 | | | | MinPt-O-SF | |
| | 10418.92 | 139.47 | 10325.40 | 10279.45 | 113.34 | OSF1.50 | 17986.29 | 7350.00 | | | | TD | |
| Robin 9-HZ IFR1+MS 0' to 18107' - PR (Def Survey) | | | | | | | | | | | | | Pass |
| | 12561.54 | 169.63 | 12448.13 | 12391.91 | 111.72 | OSF1.50 | 0.00 | 0.00 | | | | MinPt-O-SF | |
| | 12548.27 | 169.41 | 12435.00 | 12378.86 | 111.74 | OSF1.50 | 23.00 | 23.00 | | | | WRP | |
| | 11279.86 | 115.34 | 11202.64 | 11164.52 | 147.95 | OSF1.50 | 4760.00 | 4554.46 | | | | MinPt-O-ADP | |

...Confluence 33-01N-65W (Freedom 33 Pad)\Buford 33-7-3L\Original Hole\Buford 33-7-3L R0 mdv 27Jul22

| Offset Trajectory | Separation | | | Allow Dev. (ft) | Sep. Fact. | Controlling Rule | Reference Trajectory | | Risk Level | | | Alert | Status |
|---|------------|----------|----------|-----------------|------------|------------------|----------------------|----------|------------|-------|-------|-------------|--------|
| | Cl-Ct (ft) | MAS (ft) | EOU (ft) | | | | MD (ft) | TVD (ft) | Alert | Minor | Major | | |
| | 11279.80 | 115.26 | 11202.63 | 11164.54 | 148.05 | OSF1.50 | 4780.00 | 4573.31 | | | | MINPT-O-EOU | |
| | 11279.77 | 115.18 | 11202.65 | 11164.59 | 148.15 | OSF1.50 | 4800.00 | 4592.15 | | | | MinPt-CiCt | |
| | 870.53 | 159.28 | 764.02 | 711.25 | 8.24 | OSF1.50 | 17986.29 | 7350.00 | | | | MinPts | |
| Robin 9-8HZ IFR1+MS 0' to 18257' - PR (Def Survey) | | | | | | | | | | | | | Pass |
| | 12727.81 | 171.10 | 12613.41 | 12556.71 | 112.22 | OSF1.50 | 0.00 | 0.00 | | | | MinPt-O-SF | |
| | 12714.29 | 170.90 | 12600.03 | 12543.39 | 112.23 | OSF1.50 | 23.00 | 23.00 | | | | MinPt-O-SF | |
| | 11347.98 | 117.71 | 11269.18 | 11230.27 | 145.82 | OSF1.50 | 5050.00 | 4827.71 | | | | MinPt-O-ADP | |
| | 11347.96 | 117.68 | 11269.18 | 11230.28 | 145.85 | OSF1.50 | 5060.00 | 4837.13 | | | | MINPT-O-EOU | |
| | 11347.95 | 117.63 | 11269.20 | 11230.32 | 145.91 | OSF1.50 | 5080.00 | 4855.97 | | | | MinPt-CiCt | |
| | 880.17 | 151.51 | 778.83 | 728.65 | 8.76 | OSF1.50 | 17986.29 | 7350.00 | | | | MinPts | |
| Robin 9-9HZ IFR1+MS 0' to 18068' - PR (Def Survey) | | | | | | | | | | | | | Pass |
| | 12701.48 | 170.24 | 12587.65 | 12531.23 | 112.55 | OSF1.50 | 0.00 | 0.00 | | | | MinPt-O-SF | |
| | 12688.19 | 170.05 | 12574.50 | 12518.15 | 112.57 | OSF1.50 | 23.00 | 23.00 | | | | MinPt-O-SF | |
| | 11348.75 | 117.87 | 11269.85 | 11230.88 | 145.62 | OSF1.50 | 4990.00 | 4771.17 | | | | MinPt-O-ADP | |
| | 11348.73 | 117.84 | 11269.84 | 11230.89 | 145.66 | OSF1.50 | 5000.00 | 4780.60 | | | | MINPT-O-EOU | |
| | 11348.71 | 117.78 | 11269.86 | 11230.92 | 145.73 | OSF1.50 | 5020.00 | 4799.44 | | | | MinPt-CiCt | |
| | 994.31 | 264.54 | 817.62 | 729.76 | 5.65 | OSF1.50 | 17986.29 | 7350.00 | | | | MinPts | |
| Robin 9-2HZ IFR1+MS 0' to 18623' - PR (Def Survey) | | | | | | | | | | | | | Pass |
| | 12606.85 | 181.48 | 12485.54 | 12425.37 | 104.76 | OSF1.50 | 0.00 | 0.00 | | | | MinPt-O-SF | |
| | 12593.19 | 181.26 | 12472.02 | 12411.93 | 104.77 | OSF1.50 | 23.00 | 23.00 | | | | MinPt-O-SF | |
| | 11356.07 | 132.75 | 11267.24 | 11223.32 | 129.27 | OSF1.50 | 4660.00 | 4460.24 | | | | MinPt-O-ADP | |
| | 11356.04 | 132.71 | 11267.24 | 11223.33 | 129.30 | OSF1.50 | 4670.00 | 4469.66 | | | | MINPT-O-EOU | |
| | 11356.01 | 132.61 | 11267.27 | 11223.40 | 129.40 | OSF1.50 | 4700.00 | 4497.93 | | | | MinPt-CiCt | |
| | 1766.08 | 497.30 | 1434.23 | 1268.79 | 5.33 | OSF1.50 | 17986.29 | 7350.00 | | | | MinPts | |
| Robin 9-1HZ IFR1+MS 0' to 18459' - PR (Def Survey) | | | | | | | | | | | | | Pass |
| | 12487.88 | 182.40 | 12365.95 | 12305.48 | 103.25 | OSF1.50 | 0.00 | 0.00 | | | | MinPt-O-SF | |
| | 12474.44 | 182.18 | 12352.66 | 12292.26 | 103.26 | OSF1.50 | 23.00 | 23.00 | | | | MinPt-O-SF | |
| | 11326.05 | 138.09 | 11233.66 | 11187.96 | 123.90 | OSF1.50 | 4390.00 | 4205.84 | | | | MinPt-O-ADP | |
| | 11325.99 | 138.02 | 11233.65 | 11187.97 | 123.97 | OSF1.50 | 4410.00 | 4224.69 | | | | MINPT-O-EOU | |
| | 11325.96 | 137.91 | 11233.69 | 11188.05 | 124.06 | OSF1.50 | 4440.00 | 4252.95 | | | | MinPt-CiCt | |
| | 2082.08 | 515.91 | 1737.82 | 1566.17 | 6.06 | OSF1.50 | 17986.29 | 7350.00 | | | | MinPts | |
| Young 01N-65W-28-8N MWD 0' to 11808' - PR (Def Survey) | | | | | | | | | | | | | Pass |
| | 9518.25 | 144.65 | 9421.21 | 9373.59 | 99.93 | OSF1.50 | 0.00 | 0.00 | | | | Surface | |
| | 9500.79 | 144.85 | 9403.62 | 9355.94 | 99.61 | OSF1.50 | 23.00 | 23.00 | | | | WRP | |
| | 8618.62 | 162.31 | 8509.88 | 8456.32 | 61.76 | OSF1.50 | 6610.00 | 6297.56 | | | | MinPt-CiCt | |
| | 8618.65 | 162.41 | 8509.84 | 8456.24 | 61.72 | OSF1.50 | 6630.00 | 6316.41 | | | | MINPT-O-EOU | |
| | 8618.74 | 162.52 | 8509.86 | 8456.22 | 61.68 | OSF1.50 | 6650.00 | 6335.25 | | | | MinPt-O-ADP | |
| | 2254.77 | 369.13 | 2008.15 | 1885.64 | 9.20 | OSF1.50 | 13520.00 | 7350.00 | | | | MinPt-CiCt | |
| | 2255.19 | 370.57 | 2007.61 | 1884.62 | 9.16 | OSF1.50 | 13560.00 | 7350.00 | | | | MinPts | |
| | 2255.40 | 370.72 | 2007.72 | 1884.68 | 9.16 | OSF1.50 | 13570.00 | 7350.00 | | | | MinPt-O-SF | |
| | 2259.12 | 371.25 | 2011.09 | 1887.87 | 9.16 | OSF1.50 | 13720.00 | 7350.00 | | | | MinPt-O-SF | |
| | 2269.22 | 371.76 | 2020.84 | 1897.46 | 9.19 | OSF1.50 | 14180.00 | 7350.00 | | | | MinPt-O-SF | |
| | 2268.81 | 370.32 | 2021.39 | 1898.49 | 9.22 | OSF1.50 | 14290.00 | 7350.00 | | | | MinPt-CiCt | |
| | 2268.86 | 370.81 | 2021.11 | 1898.04 | 9.21 | OSF1.50 | 14320.00 | 7350.00 | | | | MinPts | |
| | 2261.69 | 373.01 | 2012.48 | 1888.67 | 9.13 | OSF1.50 | 14600.00 | 7350.00 | | | | MinPt-CiCt | |
| | 2262.13 | 374.86 | 2011.65 | 1887.28 | 9.08 | OSF1.50 | 14710.00 | 7350.00 | | | | MINPT-O-EOU | |
| | 2262.72 | 375.78 | 2011.65 | 1886.94 | 9.08 | OSF1.50 | 14800.00 | 7350.00 | | | | MinPts | |
| | 2262.68 | 375.74 | 2011.65 | 1886.94 | 9.07 | OSF1.50 | 14860.00 | 7350.00 | | | | MinPts | |
| | 2259.66 | 374.33 | 2009.57 | 1885.32 | 9.09 | OSF1.50 | 14960.00 | 7350.00 | | | | MinPts | |
| | 2233.57 | 387.70 | 1974.56 | 1845.86 | 8.67 | OSF1.50 | 15510.00 | 7350.00 | | | | MinPt-CiCt | |
| | 2235.04 | 392.11 | 1973.05 | 1842.92 | 8.58 | OSF1.50 | 15640.00 | 7350.00 | | | | MINPT-O-EOU | |
| | 2236.69 | 394.08 | 1973.43 | 1842.60 | 8.54 | OSF1.50 | 15700.00 | 7350.00 | | | | MinPts | |
| | 2228.74 | 412.64 | 1953.11 | 1816.10 | 8.13 | OSF1.50 | 16440.00 | 7350.00 | | | | MinPt-CiCt | |
| | 2230.71 | 419.46 | 1950.54 | 1811.25 | 8.00 | OSF1.50 | 16620.00 | 7350.00 | | | | MINPT-O-EOU | |
| | 2231.28 | 428.39 | 1945.16 | 1802.90 | 7.84 | OSF1.50 | 16910.00 | 7350.00 | | | | MinPt-CiCt | |
| | 2229.59 | 436.92 | 1937.77 | 1792.66 | 7.68 | OSF1.50 | 17170.00 | 7350.00 | | | | MinPts | |
| | 2208.20 | 457.26 | 1902.83 | 1750.95 | 7.26 | OSF1.50 | 17660.00 | 7350.00 | | | | MinPt-CiCt | |
| | 2208.63 | 460.63 | 1901.01 | 1748.00 | 7.21 | OSF1.50 | 17730.00 | 7350.00 | | | | MinPts | |
| | 2206.91 | 466.89 | 1895.11 | 1740.02 | 7.11 | OSF1.50 | 17890.00 | 7350.00 | | | | MinPt-CiCt | |
| | 2208.30 | 472.05 | 1893.07 | 1736.26 | 7.04 | OSF1.50 | 17986.29 | 7350.00 | | | | MinPts | |
| English Farms 8-19HZ IFR1+MS 0' to 20216' - PR (Def Survey) | | | | | | | | | | | | | Pass |
| | 10575.72 | 223.61 | 10426.32 | 10352.11 | 71.25 | OSF1.50 | 0.00 | 0.00 | | | | Surface | |
| | 10559.83 | 223.35 | 10410.60 | 10336.48 | 71.23 | OSF1.50 | 23.00 | 23.00 | | | | WRP | |
| | 10343.59 | 218.98 | 10197.28 | 10124.61 | 71.17 | OSF1.50 | 340.00 | 340.00 | | | | MinPt-O-SF | |
| | 8997.28 | 145.61 | 8899.88 | 8851.67 | 93.30 | OSF1.50 | 4860.00 | 4648.69 | | | | MinPt-O-ADP | |
| | 8997.02 | 145.30 | 8899.83 | 8851.72 | 93.51 | OSF1.50 | 4890.00 | 4676.95 | | | | MINPT-O-EOU | |
| | 8996.70 | 144.69 | 8900.00 | 8852.10 | 93.90 | OSF1.50 | 4950.00 | 4733.48 | | | | MinPt-CiCt | |
| | 2303.37 | 506.03 | 1965.69 | 1797.34 | 6.84 | OSF1.50 | 16320.00 | 7350.00 | | | | MinPt-CiCt | |
| | 2303.53 | 506.70 | 1965.40 | 1796.83 | 6.83 | OSF1.50 | 16350.00 | 7350.00 | | | | MINPT-O-EOU | |
| | 2303.86 | 507.10 | 1965.46 | 1796.75 | 6.83 | OSF1.50 | 16370.00 | 7350.00 | | | | MinPt-O-ADP | |
| | 2316.03 | 515.09 | 1972.31 | 1800.95 | 6.75 | OSF1.50 | 16760.00 | 7350.00 | | | | MinPts | |
| | 2308.82 | 521.38 | 1960.91 | 1787.44 | 6.65 | OSF1.50 | 17050.00 | 7350.00 | | | | MinPt-CiCt | |
| | 2281.17 | 544.06 | 1918.14 | 1737.11 | 6.30 | OSF1.50 | 17986.29 | 7350.00 | | | | MinPts | |